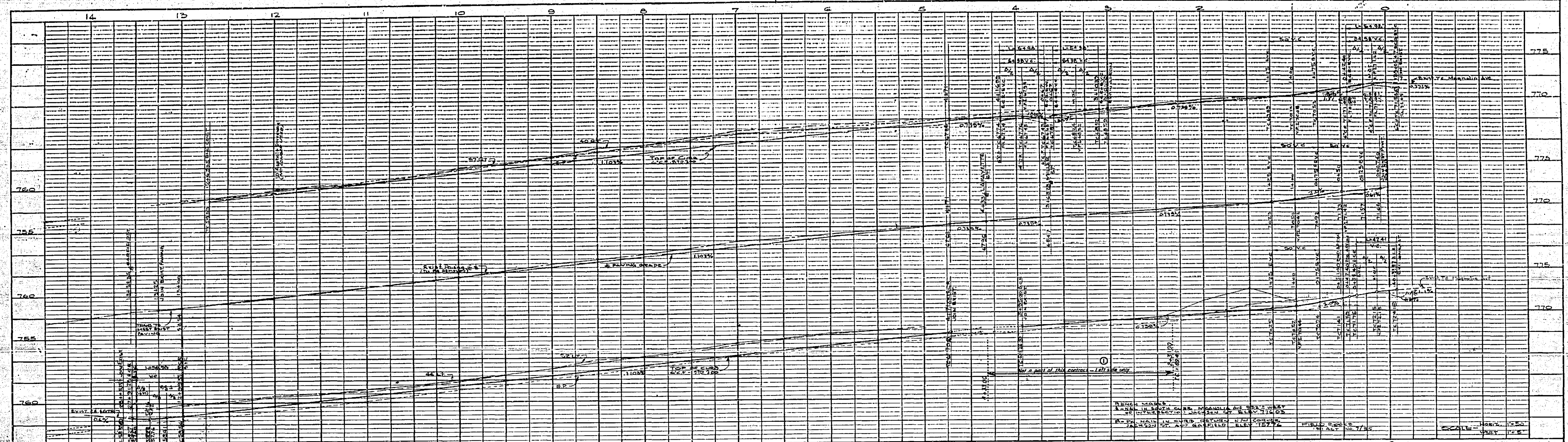
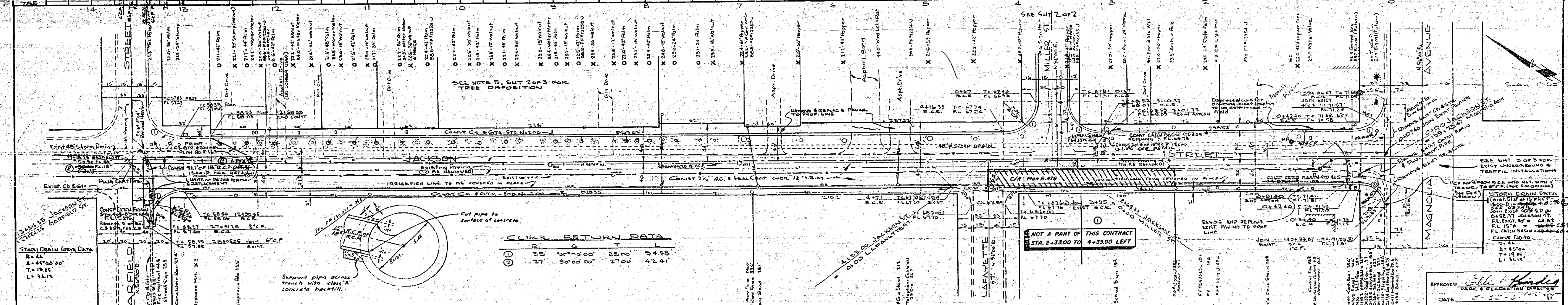


REVISIONS		CITY OF RIVERSIDE CALIFORNIA DEPARTMENT OF PUBLIC WORKS
MARK	DATE	
		PARKVIEW IMPROVEMENT DISTRICT NO. 2 TRAFFIC SIGNALS MAGNOLIA AVE. - JACKSON ST. FOR REFERENCE USE ONLY (MADE FROM TRAFFIC DIV. PLAN NO. V-305)
DESIGNED BY	CHECKED BY	APPROVED BY
DRAWN BY H.S.	Edward N. Webb E.N.W.	[Signature]
RECOMMENDED BY	ASSISTANT CITY ENGINEER	DIRECTOR OF PUBLIC WORKS
		DATE June 20, 1961
		R-391
		SHEET 3 OF 3



PROFILE	STATION	ELEVATION
NOT BOOK	775	
NOT BOOK	770	
NOT BOOK	765	
NOT BOOK	760	
NOT BOOK	755	



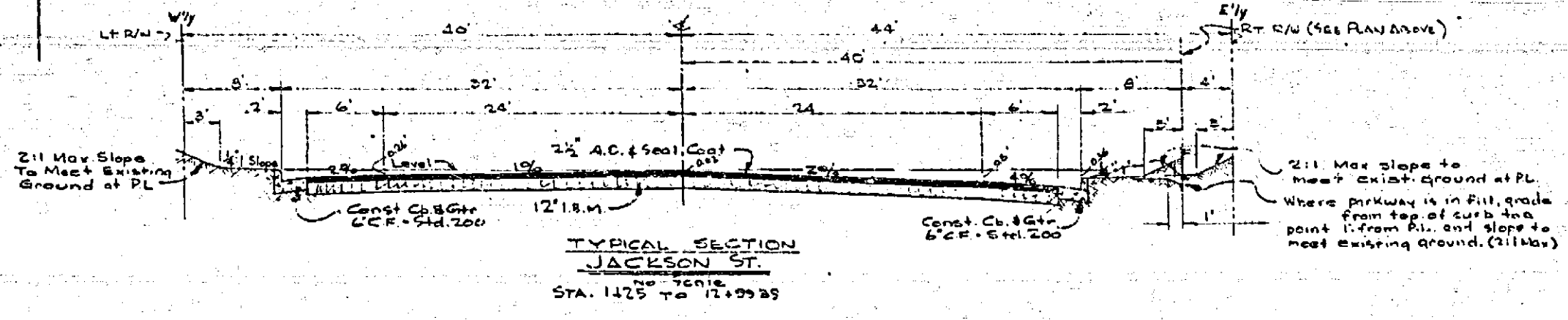
PLAN	STATION	ELEVATION
NOT BOOK		
NOT BOOK		
NOT BOOK		
NOT BOOK		

SEE NOTE 5, EMT 2 OF 3 FOR TREE DISPOSITION

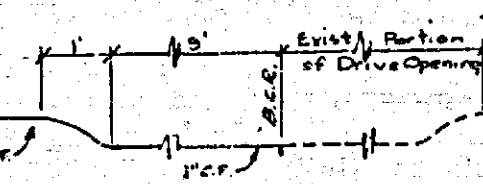
CL	BE	DE	LA
25	30'00" 00"	05'00"	04'98"
27	30'00" 00"	27'00"	02'41"

QUANTITY ESTIMATE

CURB AND GUTTER - STD. 200' L.C.F.	3,655 LF
2 1/2" ASPHALTIC CONCRETE 4 SEAL COAT	98,450 SF
IMPORTED PAVED MATERIAL	3,580 CV
2" x 4" REDWOOD HEADER	60 LF
CATCH BASIN, 4' x 4'	3 EA
16' REINFORCED CONCRETE PIPE 1500-D	78 LF
PAVING REMOVAL	47,320 SF
ELEVATION	4,954 CV
CURB AND GUTTER REMOVAL	75 LF
CATCH BASIN REMOVAL	1 EA
ADJUST MANHOLES	3 EA
TREE REMOVAL	37 KN
FENCE RELOCATION	180 LF
18" x 18" REINFORCED CONCRETE PIPE 1500-D	92 LF
DUPLICATE PAVED TRAC	17 EA

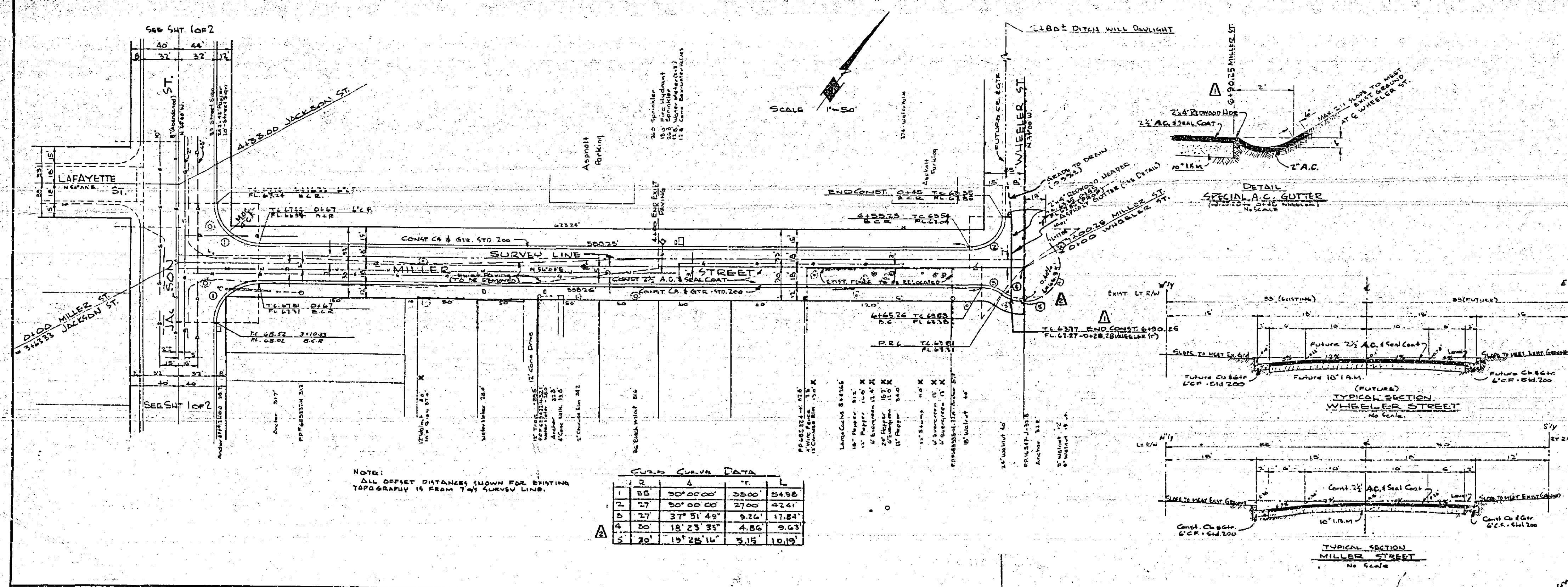
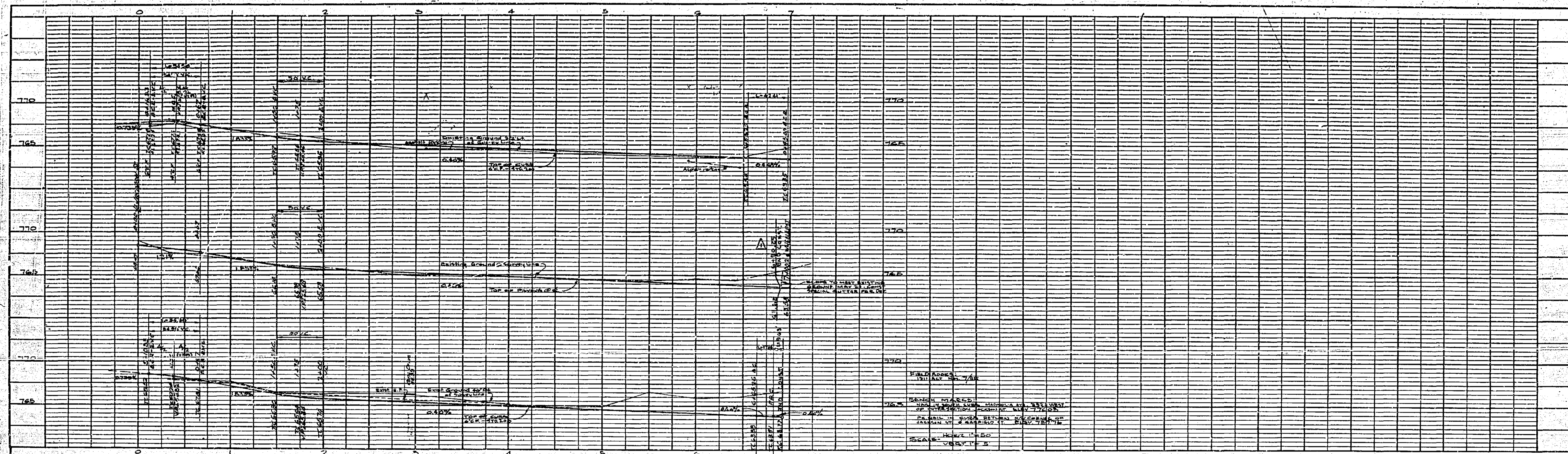


SEE SHEET 2 OF 2 FOR GENERAL NOTES



REVISIONS		CITY OF RIVERSIDE, CALIFORNIA DEPARTMENT OF PUBLIC WORKS
MARK	DATE	
①	2/23/64	PARKVIEW IMPROVEMENT DISTRICT NO 2 JACKSON STREET BETWEEN MAGNOLIA AVE. AND GARFIELD ST.
②	3/11/64	

DESIGNED BY d.h. d.h.	CHECKED BY N.W. WALL	APPROVED BY [Signature]
DRAWN BY d.h.	RECOMMENDED BY A. Ruffel	DIRECTOR OF PUBLIC WORKS
DATE 6/20/64	ASSISTANT CITY ENGINEER	DATE June 20, 1964



GENERAL NOTES:

1. THE CONTRACTOR SHALL BE RESPONSIBLE FOR OBTAINING THE RIGHT OF WAY IN ACCORDANCE WITH THE PROVISIONS OF THE LAW AS IT APPLIES TO THE CITY OF RIVERSIDE, CALIFORNIA, INCLUDING PERMITS AND APPLICANCES AND AT NO EXTRA COST TO THE CITY.
2. CONSTRUCTION SHALL BE IN ACCORDANCE WITH THE CITY OF RIVERSIDE DEPARTMENT OF PUBLIC WORKS STANDARDS AND SPECIFICATIONS, NO. 400.
3. FOLLOWING AN ELEVATION (E.L.) INDICATES CALCULATED TOP OF CURB ELEVATION DETERMINED BY ADDING CURB FACE HEIGHT TO AN EXISTING FLOW LINE ELEVATION.
4. CONTRACTOR SHALL CONTACT PROPERTY OWNERS REGARDING EXISTING UTILITY LINES AND RECONSTRUCTION THAT MAY BE REQUIRED TO AVOID EXISTING UTILITY LINES. ALL UTILITY LINES SHALL BE MAINTAINED AND PROTECTED AT ALL TIMES. ALL UTILITY LINES SHALL BE MAINTAINED AND PROTECTED AT ALL TIMES.
5. INDICATES TREES TO BE REMOVED.
6. INDICATES TREES TO BE RELOCATED.

APPROVED: *[Signature]* DATE: 5-23-61
 PUBLIC WORKS DEPARTMENT

ALL TRAFFIC SIGNS IN WAY OF CONSTRUCTION SHALL BE RELOCATED AS DIRECTED BY THE CITY TRAFFIC ENGINEER.

NOTE: ALL OFFSET DISTANCES SHOWN FOR EXISTING TOPOGRAPHY IS FROM THE SURVEY LINE.

CURB CURVE DATA

R	Δ	T	L
1. 50	30°00'00"	35.00	54.96
2. 27	50°00'00"	27.00	42.41
3. 27	37°51'49"	9.26	17.84
4. 20	18°23'35"	4.86	9.63
5. 20	19°26'16"	5.15	10.19

REVISIONS			CITY OF RIVERSIDE CALIFORNIA DEPARTMENT OF PUBLIC WORKS	
MARK	DATE	DESCRIPTION	PARKVIEW IMPROVEMENT DISTRICT NO. 2 MILLER STREET BETWEEN JACOBSON ST. AND WHEELER ST.	
Δ	7/28/61	Revised and const. from 7-0025 to 8-3025		
Δ	7/28/61	Revised Const. #4, Added Comments	DESIGNED BY: <i>[Signature]</i> DRAWN BY: <i>[Signature]</i> RECOMMENDED BY: <i>[Signature]</i> ASSISTANT CITY ENGINEER	
CHECKED BY: <i>[Signature]</i> DIRECTOR OF PUBLIC WORKS				
APPROVED BY: <i>[Signature]</i> DATE: June 30, 1961			R-391 SHEET 2 OF 3	

PROFILE

DATE	
NO.	
BY	
CHECKED	
APPROVED	

PLAN

DATE	
NO.	
BY	
CHECKED	
APPROVED	