

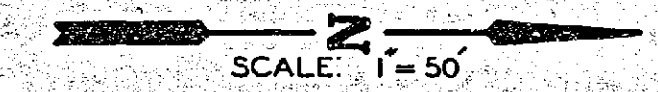
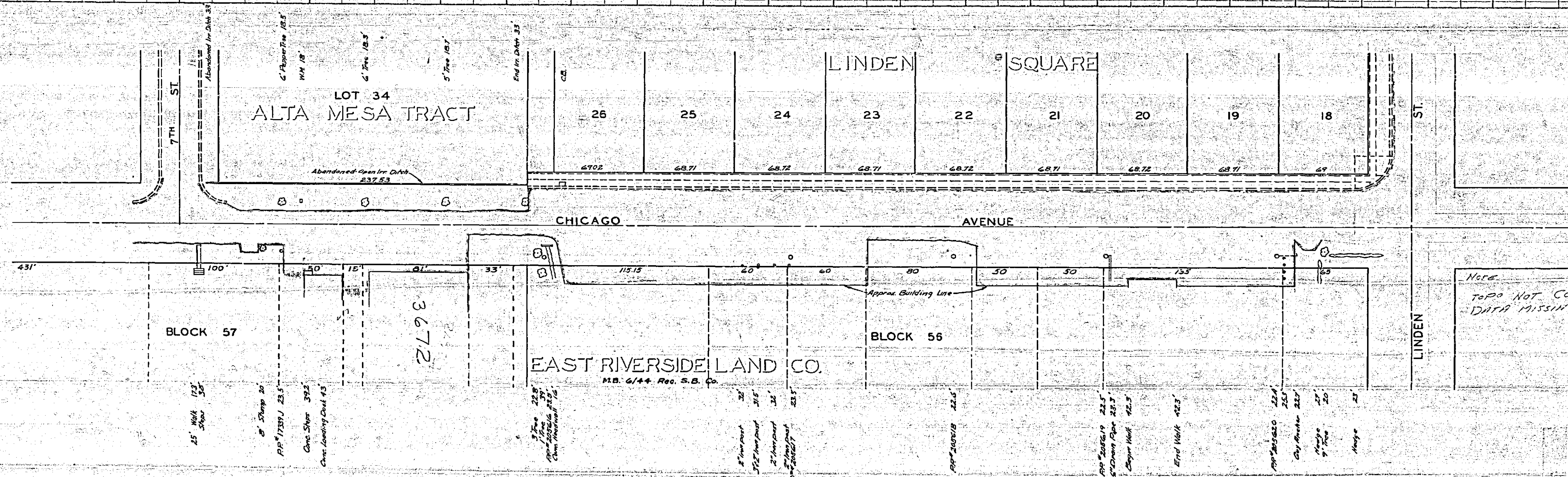




DATE: 1-15-11, PLAN: PROFILE, Q.P. R. M. E. SHAWARD  
 RIVERSIDE & ESTER CO., NEW YORK



PROFILE	SHEET NO.	DATE



Here  
 TO DO NOT COMPLETE  
 DATA MISSING. FEB. 65/43

PLAN	SHEET NO.	DATE

REVISIONS			CITY OF RIVERSIDE, CALIFORNIA DEPARTMENT OF PUBLIC WORKS	
MARK	DATE	DESCRIPTION		
			CHICAGO AVENUE CURB & GUTTER BET 7TH ST. & LINDEN ST.	
DESIGNED BY	CHECKED BY	APPROVED BY	<b>R-394</b> SHEET OF	
DRAWN BY <i>PM</i>		DIRECTOR OF PUBLIC WORKS		
RECOMMENDED BY	ASSISTANT CITY ENGINEER	DATE		

