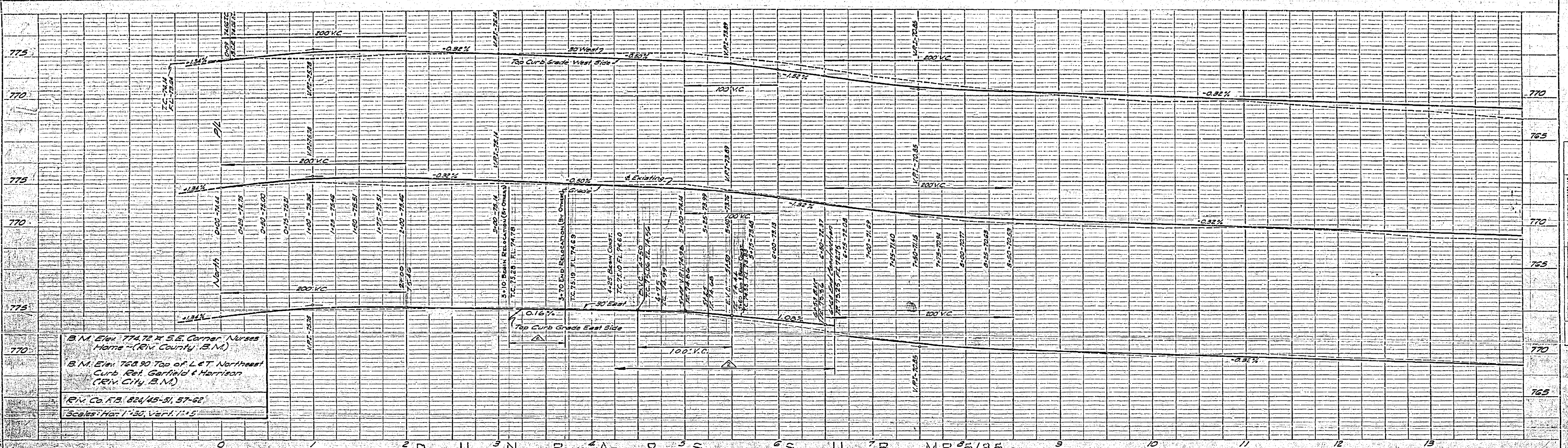


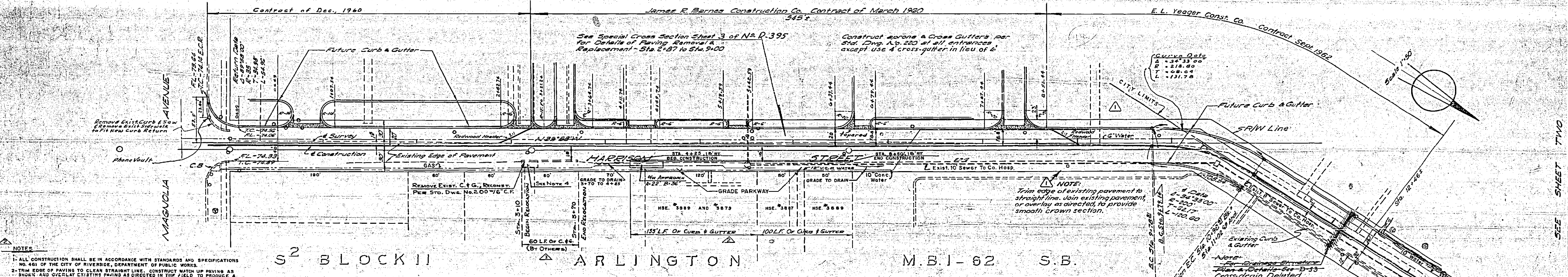
THE ENGINEERING FIRM OF CHAS. E. HARRISON, INC. ENGINEERS



B.M. Elev. 774.72 x S.E. Corner Nurses Home - (Riv. County, B.M.)  
 B.M. Elev. 768.90 Top of L&T Northeast Curb, Bet. Garfield & Harrison (Riv. City, B.M.)  
 Riv. Co. F.B. 824/45-51, 57-62  
 Scales: Hor. 1"=30', Vert. 1"=4'

NO.	DATE	DESCRIPTION
1	7-12-60	AS SHOWN

NO.	DATE	DESCRIPTION
1	7-12-60	AS SHOWN

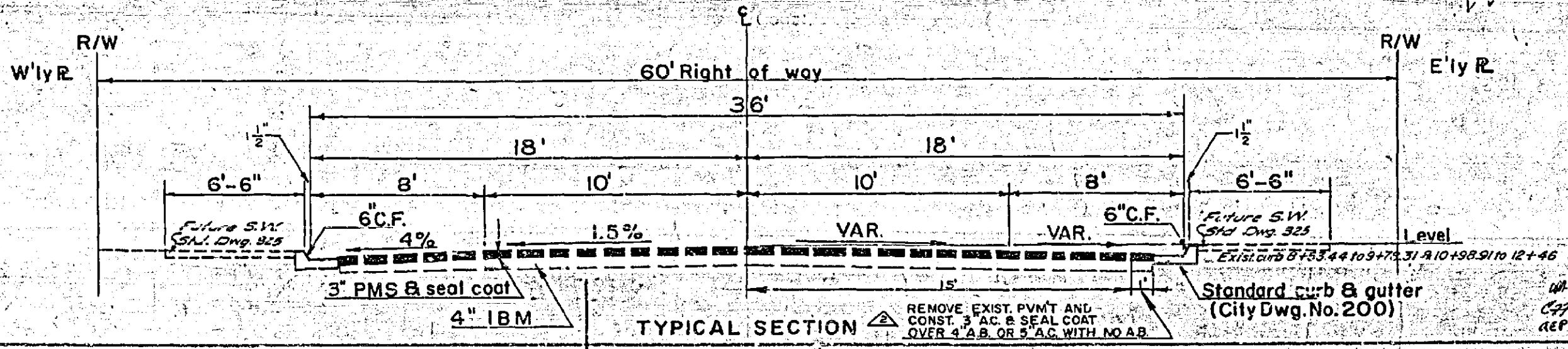


- NOTES**
- 1- ALL CONSTRUCTION SHALL BE IN ACCORDANCE WITH STANDARDS AND SPECIFICATIONS NO. 481 OF THE CITY OF RIVERSIDE, DEPARTMENT OF PUBLIC WORKS.
  - 2- THE EDGE OF PAVING TO CLEAN STRAIGHT LINE. CONSTRUCT MATCH UP PAVING AS SHOWN AND OVERLAY EXISTING PAVING AS DIRECTED IN THE FIELD TO PRODUCE A SMOOTH DRAIN SECTION.
  - 3- IT SHALL BE THE RESPONSIBILITY OF THE CONTRACTOR TO CLEAR THE RIGHT OF WAY IN ACCORDANCE WITH THE PROVISIONS OF THE LAW AS IT APPLIES EACH UTILITY, INCLUDING IRRIGATION LINES AND APPURTENANCES, AND AT NO COST TO THE CITY.
  - 4- CONSTRUCT SIDEWALK APPROACHES PER STANDARD DRAWING NO. 302. SIZE, NUMBER, AND LOCATION TO BE DETERMINED BY OWNER.
  - 5- PRIME COAT, PAINT BINDER, AND SEAL COAT SHALL BE REQUIRED.
  - 6- THE EXISTENCE AND LOCATION OF ANY UNDERGROUND UTILITY PIPES AND STRUCTURES SHOWN ARE OBTAINED FROM AVAILABLE RECORDS. THE CONTRACTOR IS REQUIRED TO TAKE THE NECESSARY MEASURES TO PROTECT THE UTILITY LINES SHOWN AND ANY OTHER UTILITY LINES NOT SHOWN ON THIS PLAN.

Note: Adjust Manhole Covers to Grade All Driveways to be located in field

**LEGEND**

- ▬ CONST. CURB & GUTTER PER STD. DWG. NO. 200, 6" C.F.
- ▬ D/W APPROACHES PER STD. DWG. NO. 302 (CURB TYPE S/W)

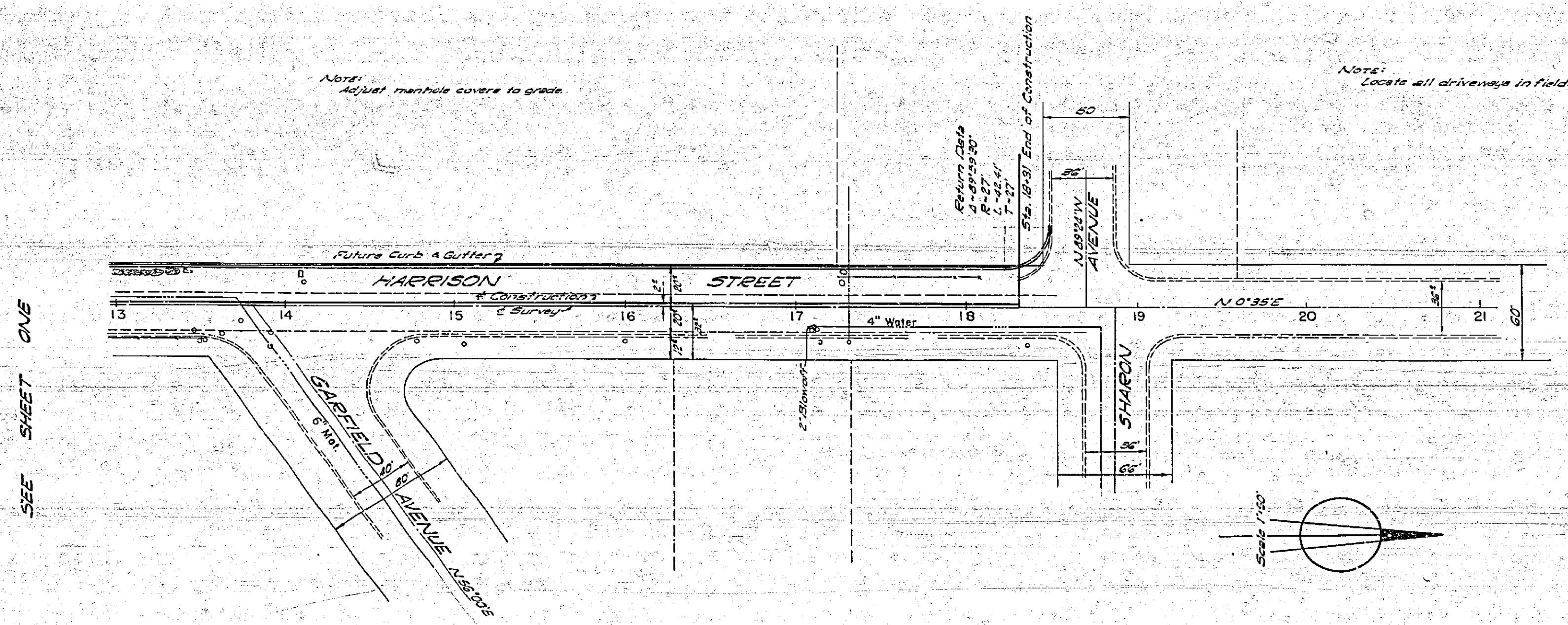
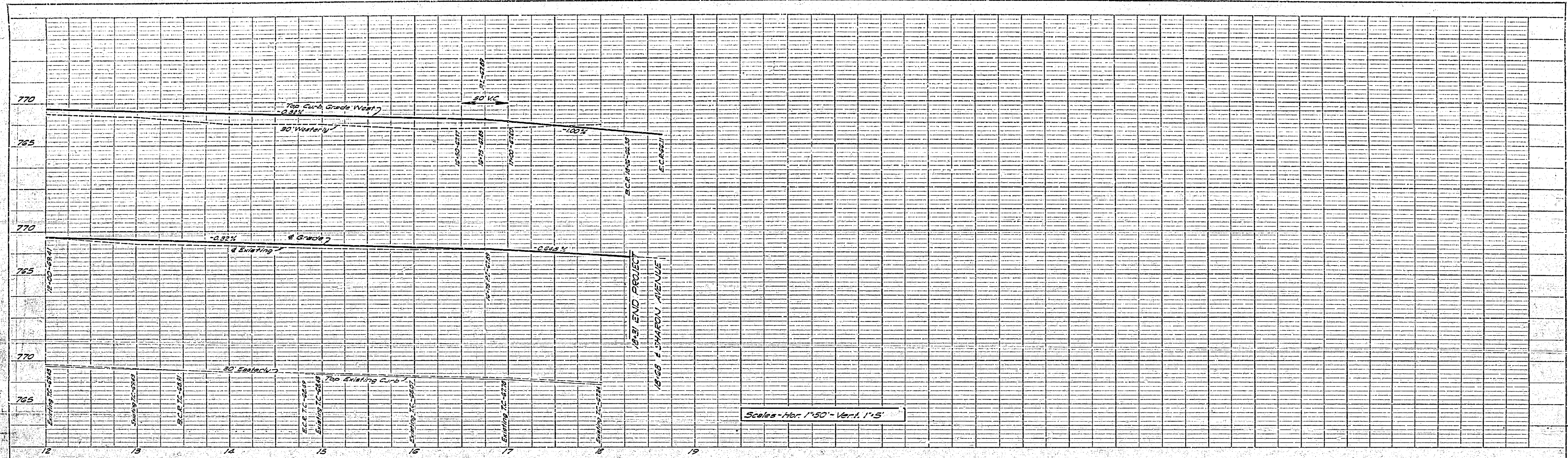


REVISIONS			CITY OF RIVERSIDE CALIFORNIA DEPARTMENT OF PUBLICWORKS
MARK	DATE	DESCRIPTION	
12-60	12-60	By Co. Rep. of City dated 11-30-60	CURB & STREET GRADES <b>HARRISON ST.</b> MAGNOLIA AVE. TO SHARON AVE
9-62	9-62	Cross-drain #2 deleted per req. of Co. to City Engineer. Added construction from 8+54.4 to City Limits.	
8-1-63	8-1-63	CONST. C.B.G. STA. 6+40 TO 8+60. C&P Run under 11th St.	

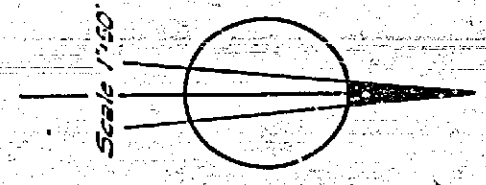
DESIGNED BY: A.K.U. CHECKED BY: [Signature]  
 RIV. CO. ROAD DEPT. APPROVED BY: [Signature] DIRECTOR OF PUBLICWORKS  
 COUNTY SURVEYOR & ROAD COMMISSIONER DATE 7-12-60

**R-395**  
SHEET 1 OF 3





SEE SHEET ONE



PROFILE	DATE	BY	DATE	BY
NO. 1				

PLAN	DATE	BY	DATE	BY
NO. 1				

REVISIONS		CITY OF RIVERSIDE CALIFORNIA DEPARTMENT OF PUBLIC WORKS
MARK	DATE	

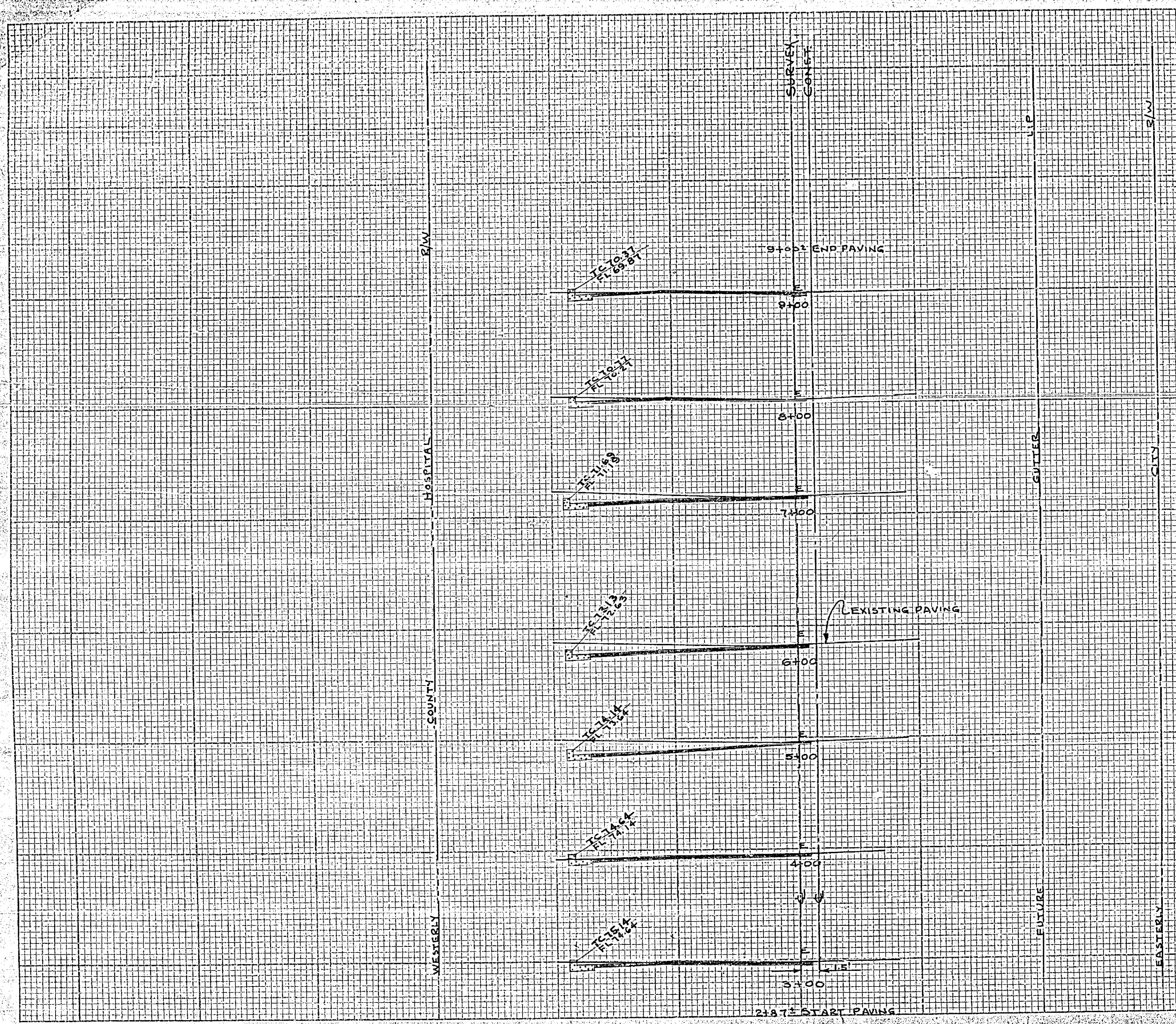
**CURB & STREET GRADES  
HARRISON ST.  
MAGNOLIA AVE. TO SHARON AVE**

DESIGNED BY: A. K. J. RIV. CO. ROAD DEPT.	CHECKED BY: [Signature]	APPROVED BY: [Signature] DIRECTOR OF PUBLIC WORKS	<b>R-395</b> SHEET 2 OF 3
APPROVED BY: A. C. Keith COUNTY SURVEYOR & ROAD COMMISSIONER	DATE: 7-12-60		

50' 0" 1" = 100'

CROSS SECTIONS  
Scale: 1 Inch = 5 feet

DESIGNED BY \_\_\_\_\_ DATE \_\_\_\_\_  
 CHECKED BY \_\_\_\_\_ DATE \_\_\_\_\_  
 DRAWN BY \_\_\_\_\_ DATE \_\_\_\_\_  
 PROJECT NO. \_\_\_\_\_  
 SHEET NO. \_\_\_\_\_



**CONSTRUCTION NOTES**  
 1. TRIM EDGE OF EXISTING PAVING TO CLEAN STRAIGHT LINE. CONSTRUCT MATCH-UP PAVING AS SHOWN AND OVERLAY EXISTING PAVING AS DIRECTED IN THE FIELD TO PRODUCE SMOOTH CROWN SECTION.  
 2. E = EDGE OF EXISTING PAVING

CITY OF RIVERSIDE CALIFORNIA DEPARTMENT OF PUBLIC WORKS 6-28-60 A.K.J.	
RIVERSIDE COUNTY HOSPITAL SITE HARRISON STREET BARNES CONSTRUCTION CO. CONTRACT CONTRACT OF 3-22-60 SCALE 1" = 5' H.V.	
APPROVED BY <i>[Signature]</i> DIRECTOR OF PUBLIC WORKS DATE 7-12-60	SHEET 3 OF 3

R-395