

| STEEL TABLE | | | |
|--------------|--------|--------|----------|
| D Bars | E Bars | H Bars | Tie Bars |
| No. Reqd. 6 | 4 | 4 | 2 |
| Size (No.) 5 | 4 | 4 | 3 |
| Length 5'-1" | 5'-0" | 5'-0" | 5'-0" |

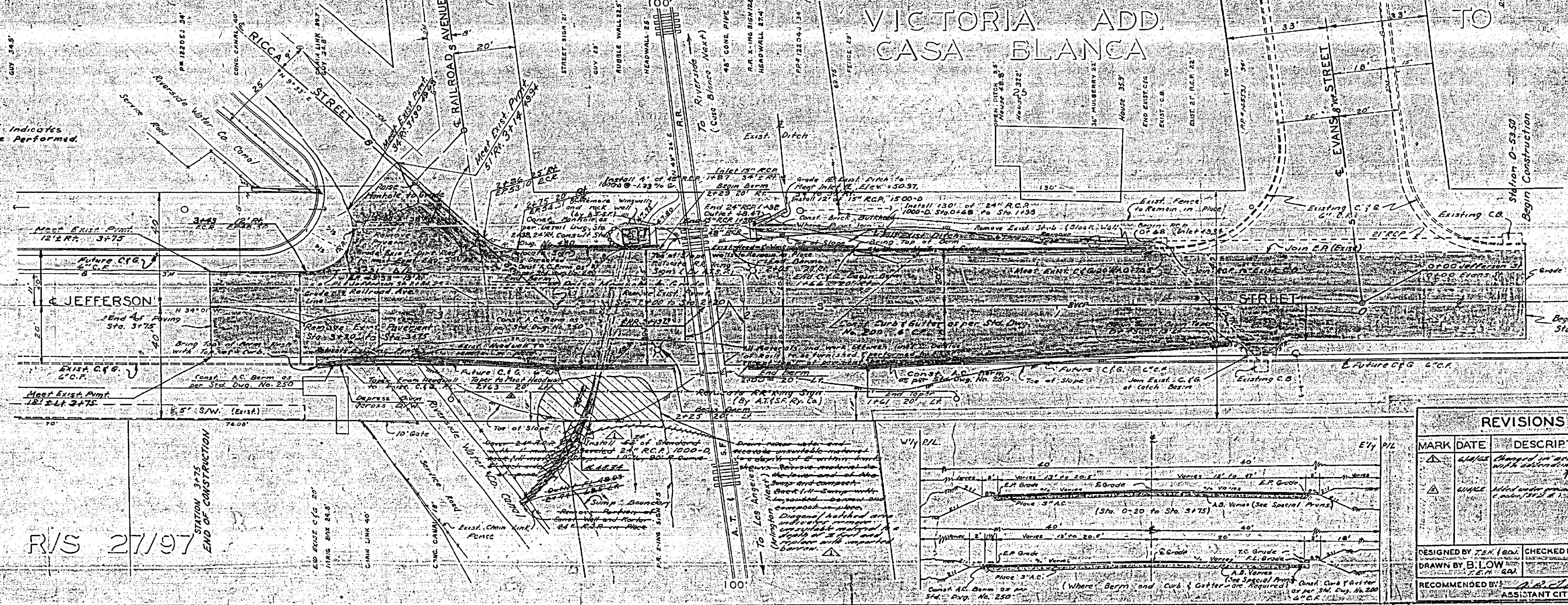
NOTE:
FOR PLACEMENT OF STEEL AND STEPS
REFER TO RIVERSIDE STD. DWG. NO. 433

B.M. ELEV. 855.95 R.R. SPIKE IN
1222 E. 1/2 S. COR. EVANS
& JEFFERSON
ELEV. 852.44 U.S.G.S. Q38 1924
IN W.H.W. OF CULVERT NO. B-15
ON AT & S.F. R.R. 120 W. OF
JEFFERSON ST.

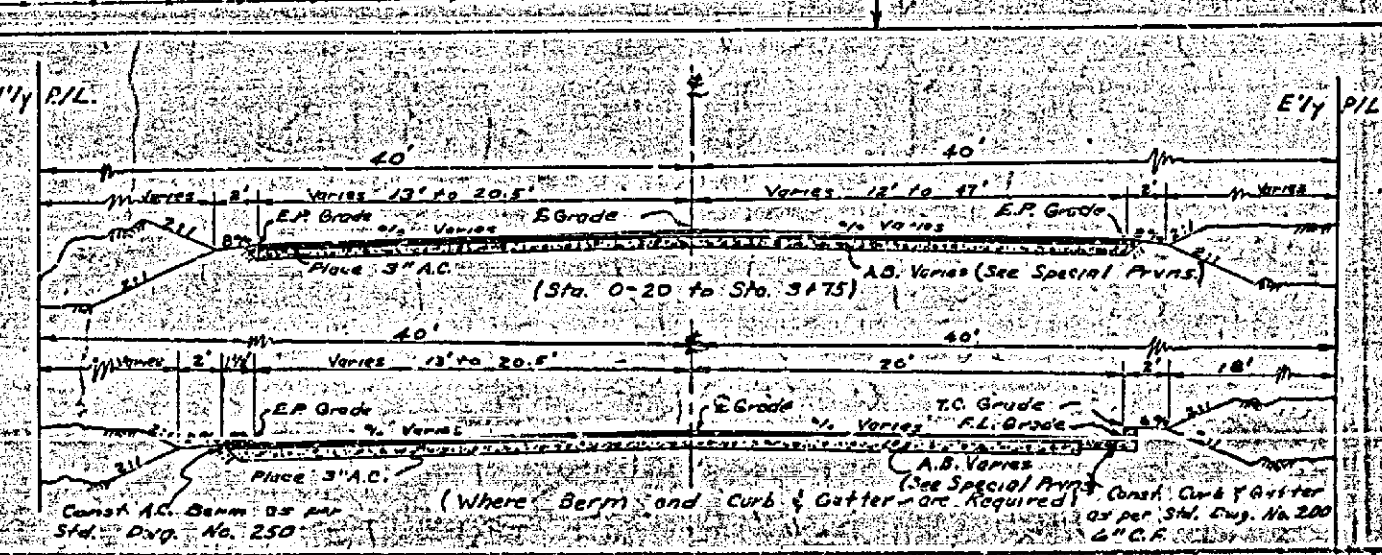
F.B. 636/02-07 L/1-8 P-1/20-28

SCALE: VERT. 1" = 2'
HOR. 1" = 20'

Note:
Shaded Area Indicates
Const. to be Performed.



R/S 27/97
STATION 3+75
END OF CONSTRUCTION



| REVISIONS | | |
|-----------|----------|-------------------------------------|
| MARK | DATE | DESCRIPTION |
| 1 | 10/20/27 | Change in proposed manhole location |
| 2 | 10/20/27 | Change in proposed manhole location |

ACCOUNT NUMBER - 013060-3017
CITY OF RIVERSIDE, CALIFORNIA
DEPARTMENT OF PUBLIC WORKS
**JEFFERSON ST
AND
AT & S.F. RY. CO. CROSSING**
AT & S.F. CROSSING NO. 28-142
DESIGNED BY J.E.M. (R/S) CHECKED BY J.E.M.
DRAWN BY B. LOW
RECOMMENDED BY J.E.M.
DATE 10-20-27 ASSISTANT CITY ENGINEER
APPROVED BY [Signature]
DIRECTOR OF PUBLIC WORKS
DATE 10-20-27
R-397
SHEET 1 OF 1