

RIVERSIDE CITY OF RIVERSIDE CALIFORNIA

PUBLIC WORKS DEPARTMENT

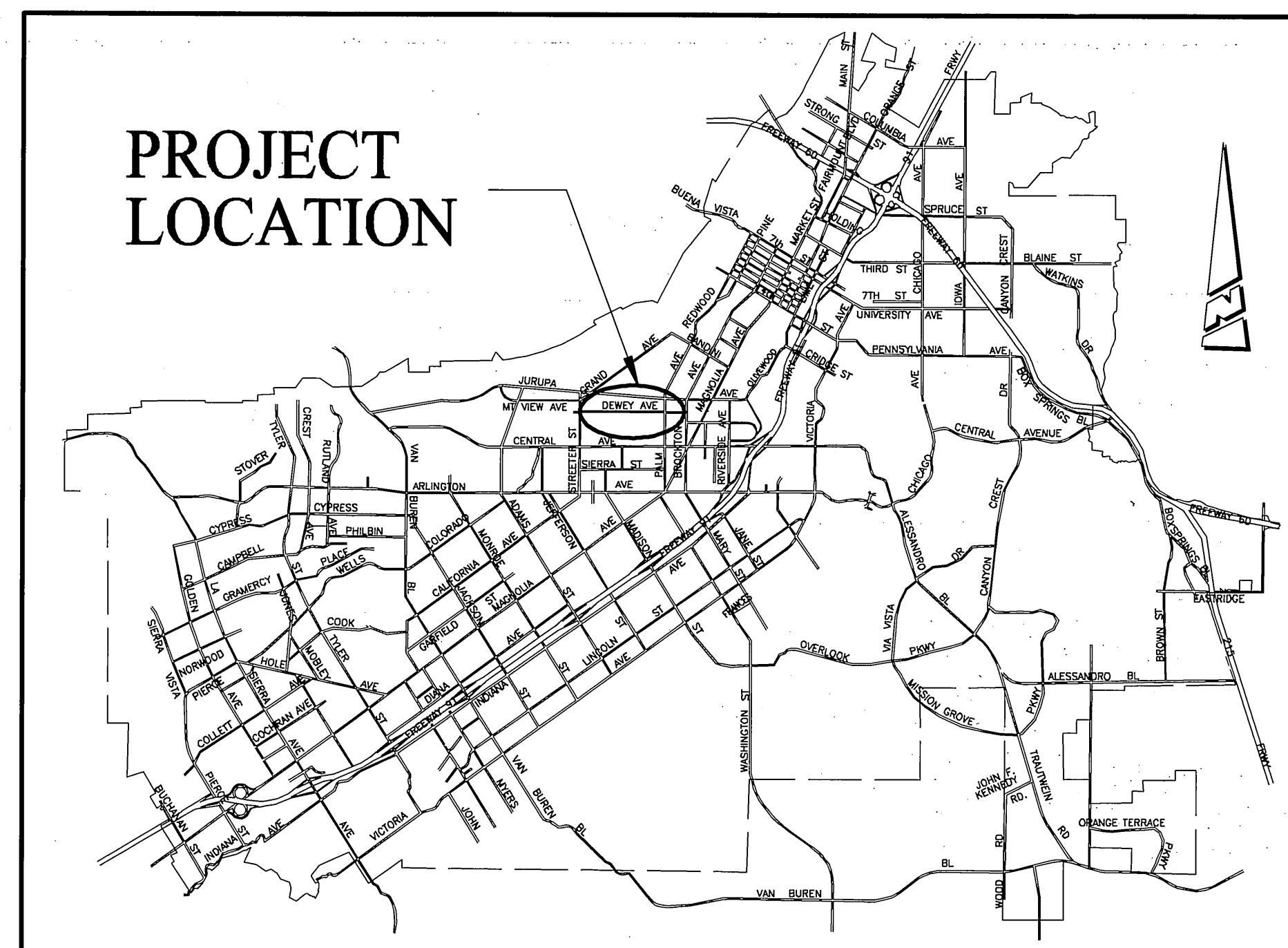
DEWEY AVENUE IMPROVEMENTS (FROM STREETER AVE. TO BROCKTON AVE.)

GENERAL CONSTRUCTION NOTES

- 1 THE CONTRACTOR SHALL PROVIDE AND MAINTAIN TWO TWELVE-FOOT-WIDE LANES FOR TWO-WAY TRAFFIC AT ALL TIMES. NO REDUCTION OF THE TRAVELED WAY WIDTH SHALL BE PERMITTED BEFORE 8:30 A.M. NOR AFTER 4:00 P.M. ON ANY STREET UNLESS PRIOR APPROVAL IN WRITING IS OBTAINED FROM THE DIRECTOR OF PUBLIC WORKS.
- 2 CONSTRUCTION SHALL BE IN ACCORDANCE WITH THE CITY OF RIVERSIDE STANDARD DRAWING AND STANDARD SPECIFICATIONS FOR PUBLIC WORKS CONSTRUCTION, 2003 EDITION.
- 3 EXISTING UTILITIES SHOWN ON THIS PLAN ARE PLOTTED FROM UTILITY RECORDS. THE CONTRACTOR IS REQUIRED TO TAKE DUE PRECAUTIONARY MEASURES TO LOCATE AND PROTECT ALL UTILITIES WHETHER OR NOT SHOWN ON THIS PLAN.
- 4 ALL STREET PULL BOXES, AFFECTED BY CONSTRUCTION, SHALL BE ADJUSTED TO THE PROPOSED GRADE.
- 5 REMOVE AND REPLACE AC PAVEMENT (0.7 DGAC) WILL BE DETERMINED BY THE ENGINEER IN THE FIELD.
- 6 R&R CURB & GUTTER, R&R SIDEWALK, AND R&R DERIVEWAY WILL BE DETERMINED BY THE ENGINEER IN THE FIELD.

SPECIFIC CONSTRUCTION NOTES

- NUMBERS ABOVE 100 IN A HEXAGON ON THE PLAN REFER TO THE RESPECTIVE STANDARD DRAWING AND SHALL BE CONSTRUCTED ACCORDINGLY. UNLESS MODIFICATIONS ARE NOTED ON THE PLAN OR COVER SHEET. ANY NUMBER SHOWN BELOW THE STANDARD DRAWING NUMBER INDICATES THE SPECIFIC ALTERNATE TO BE CONSTRUCTED.
- ADJ. GV ADJUST WATER GATE VALVE COVER TO FINISHED GRADE.
 - ADJ. MH ADJUST MANHOLE COVER TO FINISHED GRADE.
 - C/S CONSTRUCT STRUCTURAL SECTION WITH 0.3' AC OVER 1' CRUSHED AGGREGATE BASE.
 - E POWER POLE WILL BE RELOCATED BY ELECTRICAL DIVISION, UTILITIES DEPARTMENT, CITY OF RIVERSIDE.
 - G GAS LINE FACILITIES WILL BE ADJUSTED BY GAS COMPANY.
 - G1/S COLD MILLING - TYPE 1 (5' WIDE). THE MILLING DEPTH AT GUTTER LIP (OR CURB FACE) SHALL BE 0.08' AND STRAIGHT GRADED IN 5' TO MATCH EXISTING PAVEMENT SURFACE.
 - G1/T1 COLD MILLING - TYPE 1 (10' WIDE). THE MILLING DEPTH AT BEGIN POINT SHALL BE 0.10' AND STRAIGHT GRADED IN 10' TO MATCH EXISTING PAVEMENT SURFACE.
 - OL/O1 CONSTRUCT 0.1' MINIMUM ASPHALT RUBBER HOT MIX GAP GRADED (ARHM-GG) OVERLAY.
 - R&R REMOVE 0.7" DEEP OF EXISTING PAVEMENT STRUCTURE AND REPLACED BY 0.7" THICK OF DGAC.
 - W WATER METER WILL BE RELOCATED BY WATER DIVISION, UTILITIES DEPARTMENT, CITY OF RIVERSIDE.
 - 1 CONSTRUCT 4" THICK AC AND AC BERM AROUND DROP INLET (9" INSIDE DIAMETER).
 - 2 PLANT 2 ROWS OF SHRUB S-4.
 - 3 PLANT SHRUB S-5 BETWEEN SHRUB S-4 AND OTHER SHRUBS.
 - M MULCH.
 - S1 SHRUB: MEXICAN SAGE.
 - S2 SHRUB: PITOSPORIUM TENUIFOLIUM.
 - S3 SHRUB: FEATHERY CASSIA.
 - S4 SHRUB: DAY LILY (YELLOW).
 - S5 SHRUB: SOCIETY GARLIC (TRICOLOR).
 - T TREE: FIREWHEEL TREE.



PROJECT LOCATION MAP

(NTS)

CONSTRUCTION LEGEND

CENTER LINE	— C —	TOP OF SLOPE	— T —
RIGHT-OF-WAY	— R/W —	TOE OF SLOPE	— TOE —
SUBDIVISION LOT LINE	— PL —	DIRECTION OF FLOW	—>—

EXISTING UNDERGROUND UTILITIES:

SANITARY SEWER	— 8" S —	TELEPHONE CONDUIT	— T —
WATER LINE	— 6" W —	ELECTRICAL CONDUIT	— E —
STORM DRAIN	— 24" SD —	ELECTROLIER LIGHTING CONDUIT	— ELC —
GAS LINE	— 3" G —	TRAFFIC SIGNAL	— SIG —
ABANDONED UTILITY	— 6" (ABAND.) —	FIRE ALARM	— F —

EXISTING TOPOGRAPHY:

— BLOCK WALL	— POLE & GUY ANCHOR	— PEDESTRIAN PUSH BUTTON
— BOARD FENCE	— POWER POLE	— RAILROAD TRACKS
— WIRE FENCE	— TELEPHONE POLE	— RAILROAD SIGNAL
— CHAIN LINK FENCE	— TELEPHONE RISER	— RAILROAD SIGNAL
— SANITARY SEWER M.H.	— JOINT USE POLE	— TRAFFIC SIGNAL
— SANITARY SEWER CLEANOUT	— FULL BOX	— TRAFFIC SIGNAL ON MAST ARM
— STORM DRAIN M.H.	— TRAFFIC SIGN	— TRAFFIC SIGNAL CONTROLLER
— IRRIGATION WEIR	— PARKING METER	— TRAFFIC SIGNAL PRESSURE DETECTOR
— WATER M.H.	— FIRE ALARM BOX	— TRAFFIC SIGNAL LOOP DETECTOR
— GAS M.H.	— STREET NAME SIGN	— STREET LIGHT & TRAFFIC SIGNAL ON MAST ARM
— ELECTRIC M.H.	— GAS METER	— STREET LIGHT (UPRIGHT)
— TELEPHONE M.H.	— VALVE	— STREET LIGHT ON MAST ARM
— WATER METER	— AIR VALVE	— STEEL POST
— FIRE HYDRANT	— AIR VENT	— WOOD POST
— SPRINKLER HEAD	— BUS STOP SIGN	
— VALVE	— BLOW-OFF VALVE	
— FAUCET	— IRRIGATION STAND PIPE	
— MAIL BOX	— CONCRETE	
— WALK-DON'T WALK PEDESTRIAN SIGNAL	— ASPHALT	
— ELECTROLYSIS TEST STATION	— BUILDING	
— WHEEL STOP	— EDGE OF PAVEMENT	
— A.C. BERM		

IMPORTANT NOTICE
Section 4216.4217 of the Government Code requires a Dig Alert Identification Number to be issued before a "Permit to Excavate" will be valid. For your Dig Alert I.D. Number call CALL TOLL FREE 1-800-227-2600
48 HOURS BEFORE YOU DIG UNDERGROUND SERVICE ALERT

ENGINEER IN RESPONSIBLE CHARGE
PHILIP HANNAWAY
R.C.E. No. 44747 expires 3/31/2008
DATE 2/26/07

REGISTERED PROFESSIONAL ENGINEER
PHILIP HANNAWAY
No. 44747
Exp. 3-31-2008
CIVIL
STATE OF CALIFORNIA

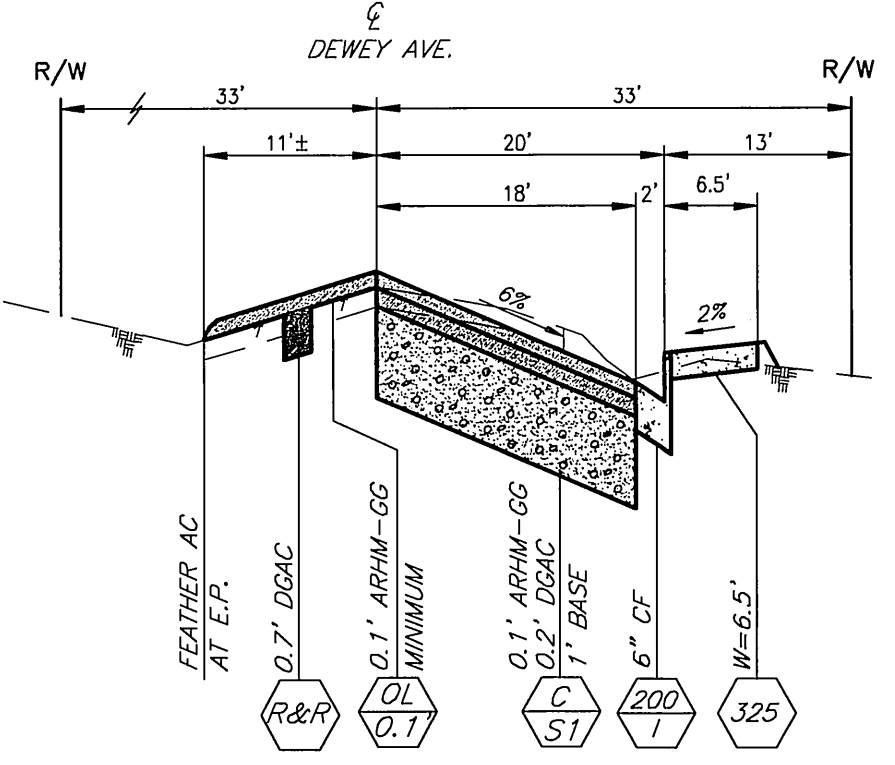
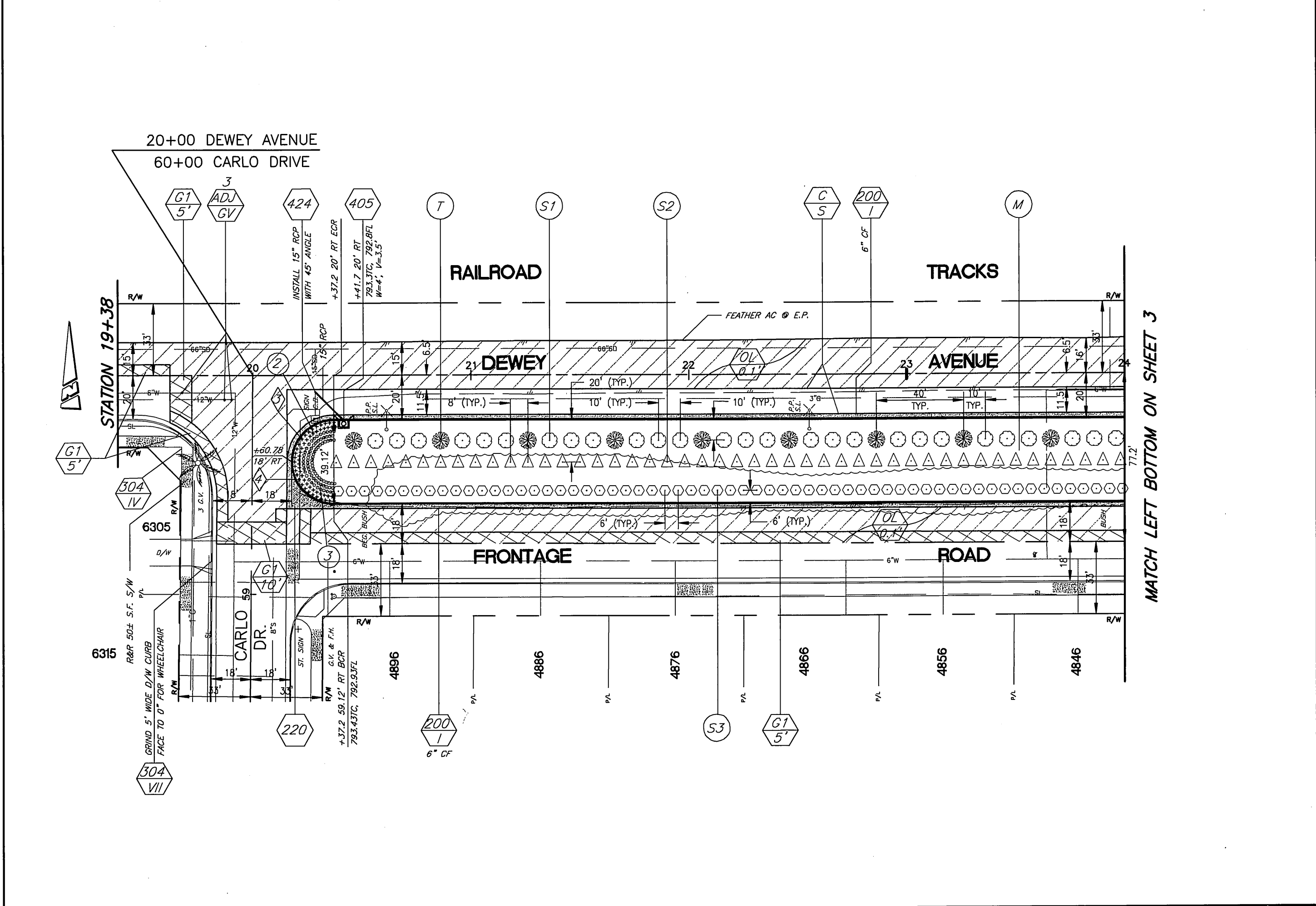
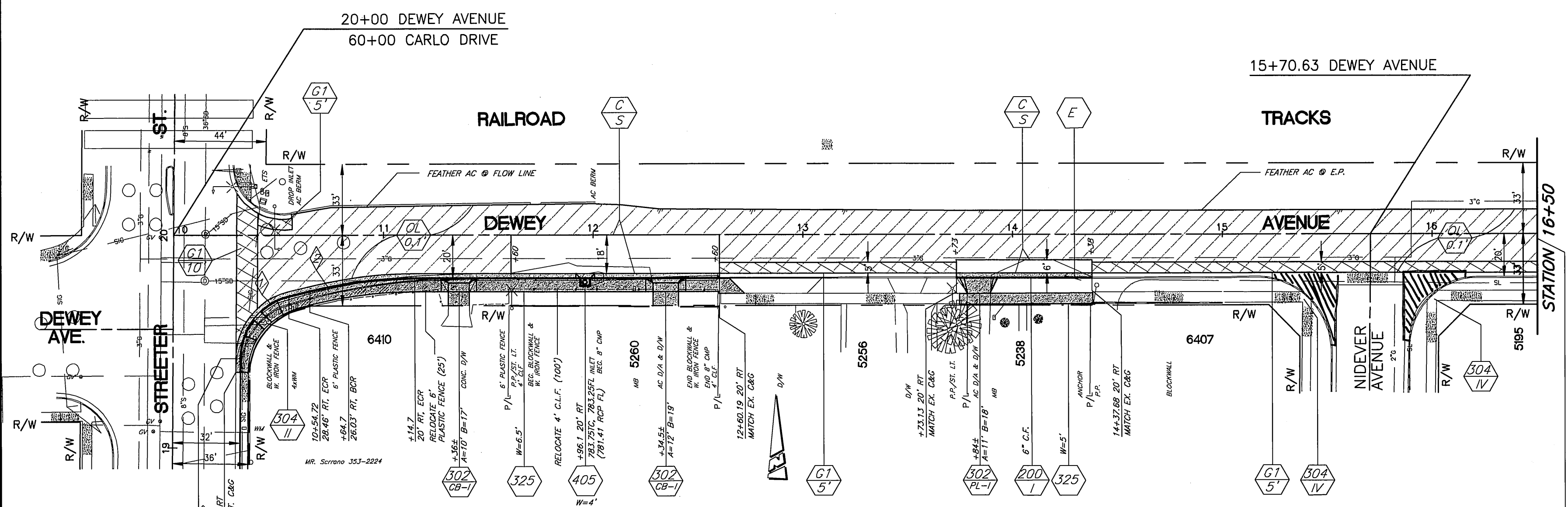
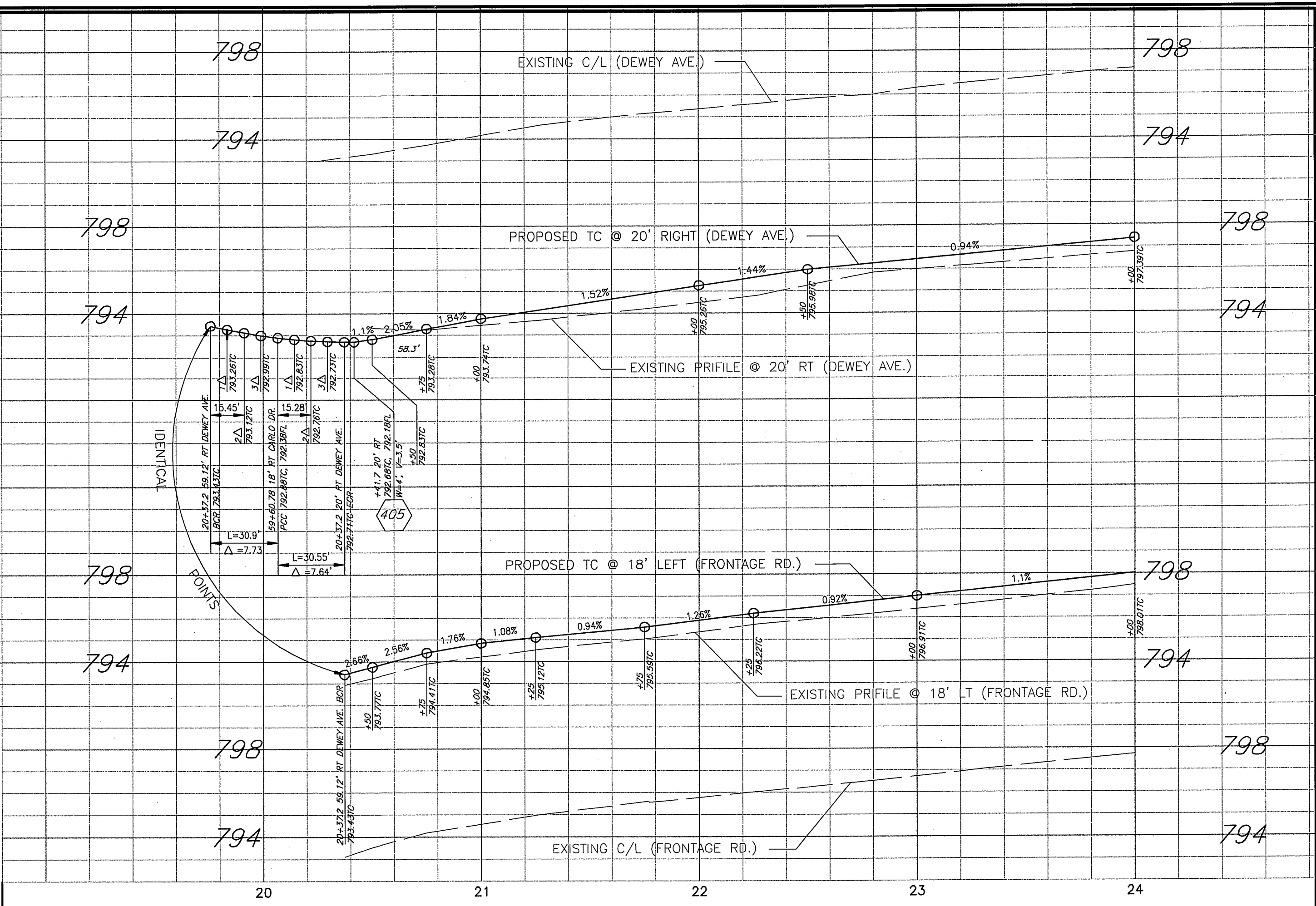
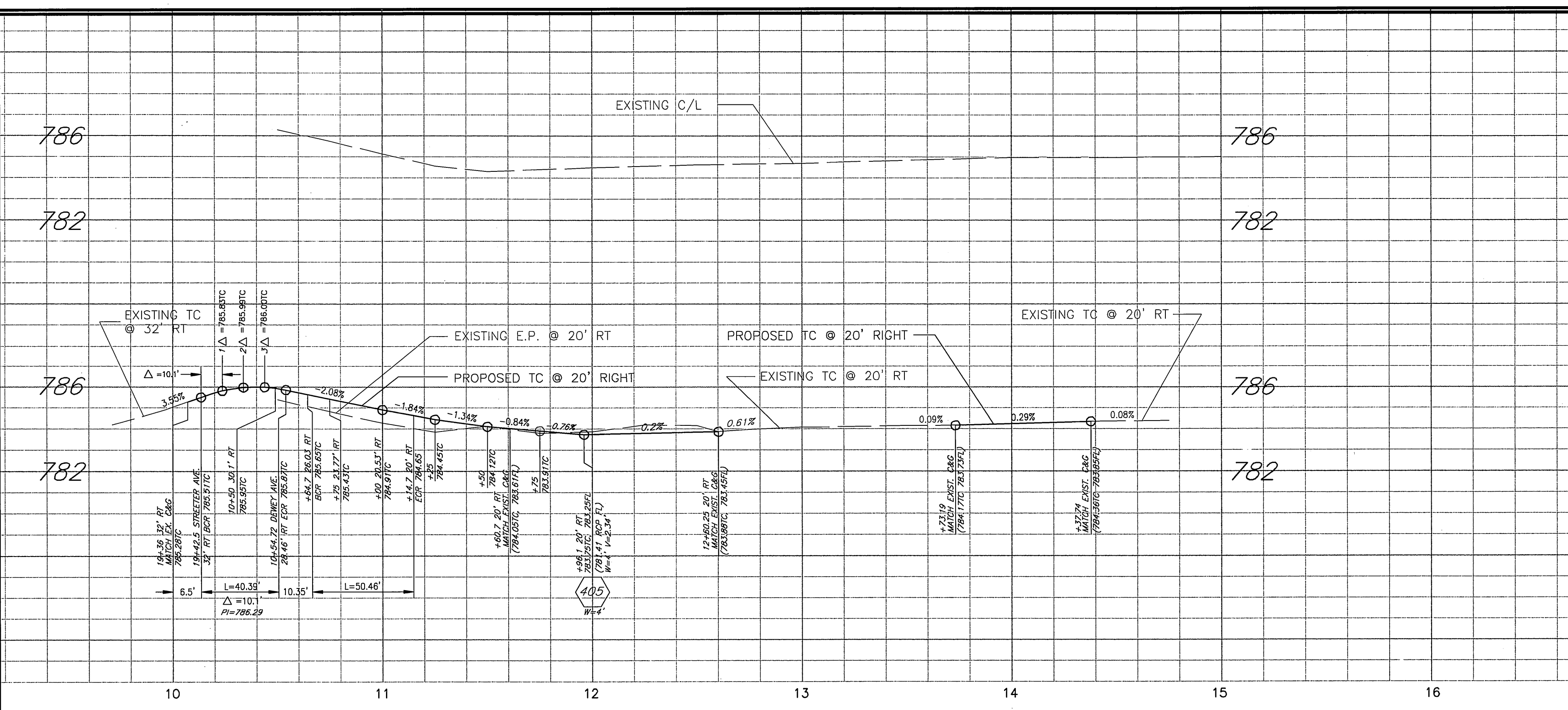
MARK	REVISIONS	APPR.	DATE

CITY OF RIVERSIDE, CALIFORNIA
PUBLIC WORKS DEPARTMENT

APPROVED BY	BY	DATE
ENGINEERING MANAGER	PH	2/26/07
PRINCIPAL ENGINEER	DH	2/26/07
TRAFFIC DIVISION	AM	2/26/07
SURVEYOR	CS	2/26/07
STREET SERVICES	CS	2/26/07
CONST. CONTRACT ADMIN.	CS	2/26/07

DEWEY AVENUE IMPROVEMENTS
FROM STREETER AVE. TO BROCKTON AVE.

ACCT. NO.: 9591927152-440223xx
W.O. : 0701428
R-3974
SHEET 1 OF 5
FILE: COMMON/COMPLETE/R-3974



NOTE:
 1. CONTINUE ALL AC PAVEMENT REHAB. WORK FROM STA. 16+50 TO CARLO DR. EXCEPT THE NEW DEVELOPED AREA AT LIBERTY PLACE WHICH TO BE MARKED IN THE FIELD BY THE ENGINEER.
 2. R/W 800+ S.F. S/W BETWEEN NIDEVER AVE. AND CARLO DR.

DEWEY AVE. TYPICAL SECTION (NTS)
 BETWEEN STA. 11+15 AND STA. 12+60

BENCHMARK ID: H5-B2
 ELEVATION: 778.598
 P.K. NAIL AND CITY ENGINEER TAG IN THE BASE OF A TA OF THE NORTHEASTERLY CURB RETURN AT STREETER AVE.

CURVE	DATA	CURVE DATA			
		R	L	T	
4	90°30'08"	19.56'	30.90'	19.73'	
3	89°28'48"	19.56'	30.55'	19.38'	
2	1°36'54"	212.36'	50.46'	25.35'	
1	76°46'00"	30.00'	40.39'	23.76'	

ENGINEER IN RESPONSIBLE CHARGE
 PHILIP HANNAWAY
 R.C.E. No. 44747 expires 3/31/2008
 DATE: 2/26/07

MARK	REVISIONS	APPR.	DATE

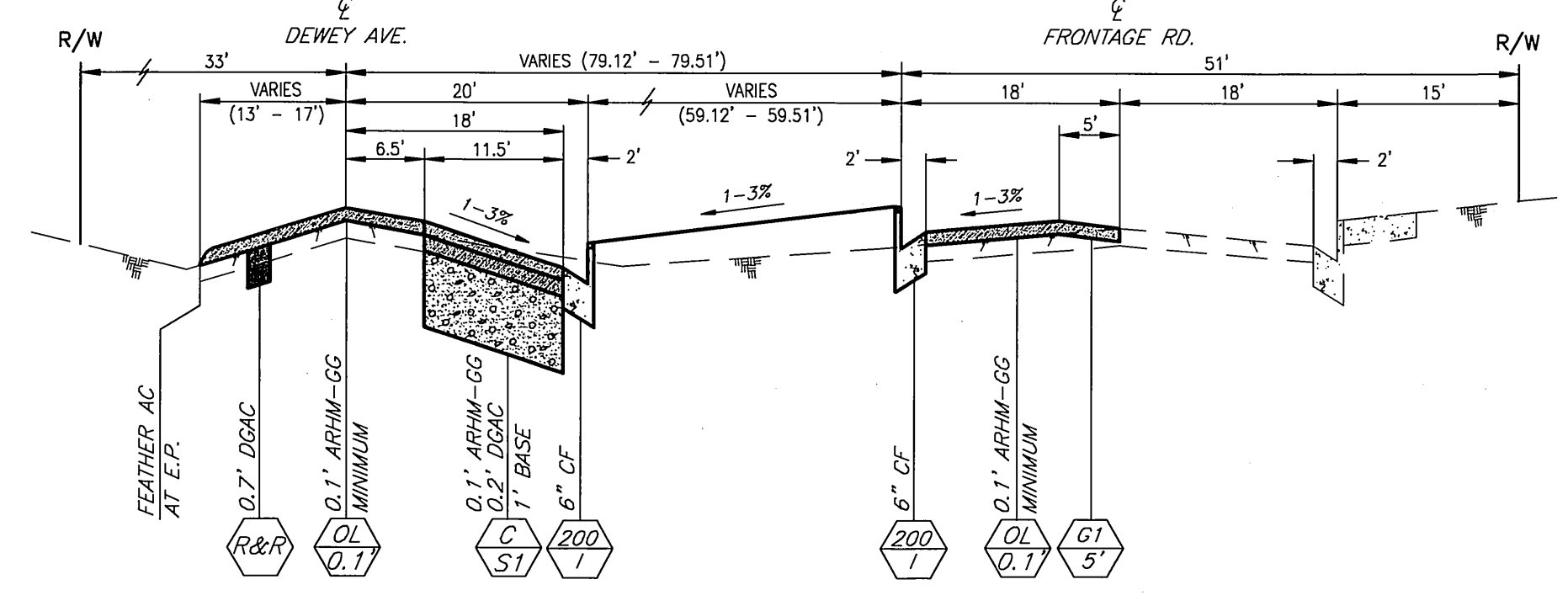
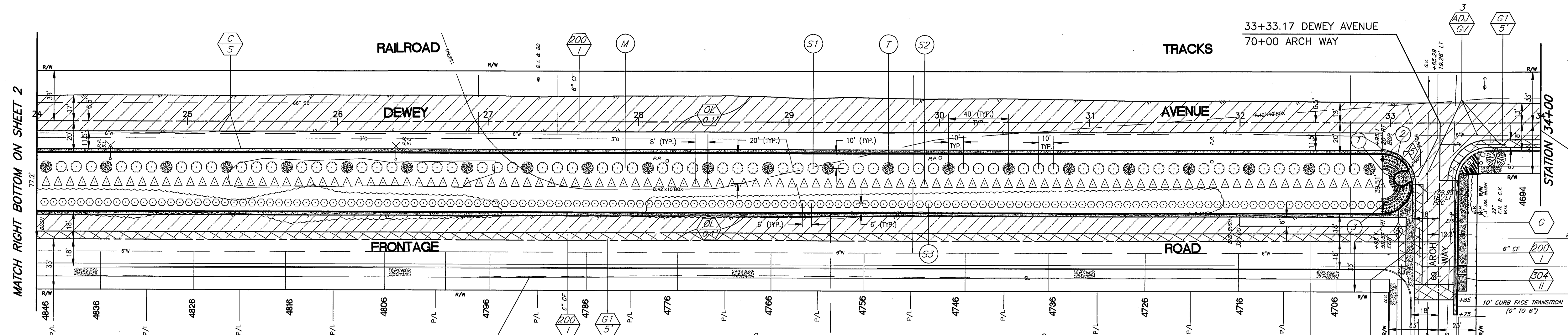
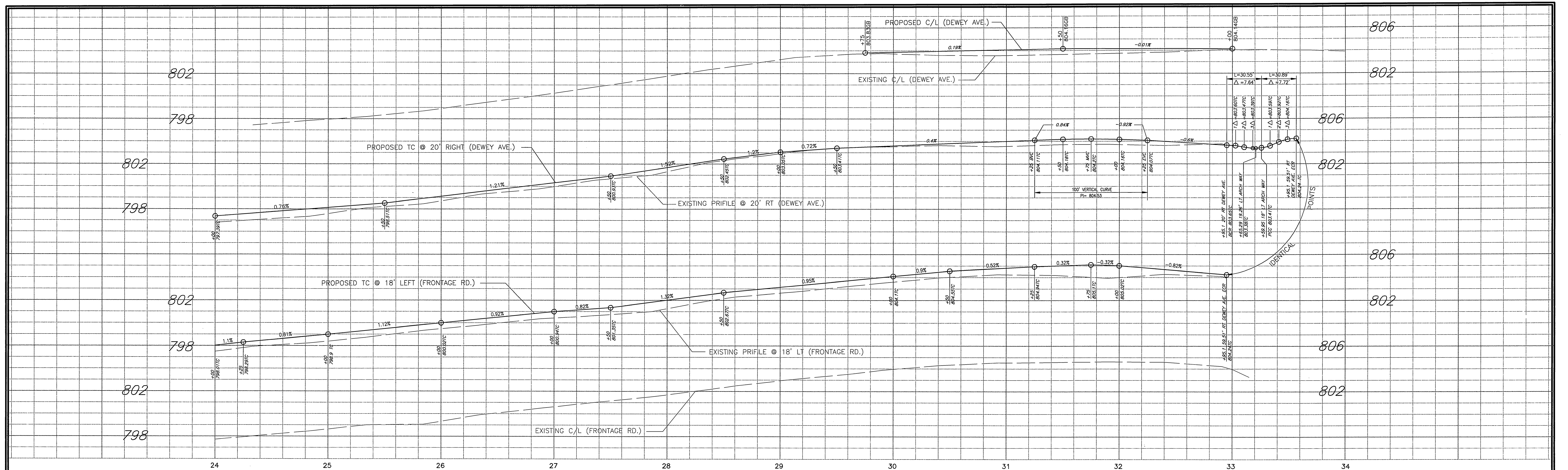
CITY OF RIVERSIDE, CALIFORNIA
 PUBLIC WORKS DEPARTMENT

APPROVED BY: [Signature]
 DATE: 2/26/07
 ENGINEERING MANAGER: [Signature]
 PRINCIPAL ENGINEER: [Signature]
 TRAFFIC DIVISION: [Signature]
 SURVEYOR: [Signature]
 STREET SERVICES: [Signature]
 CONST. CONTRACT ADMIN.: [Signature]

DEWEY AVENUE IMPROVEMENTS
 FROM STREETER AVE. TO BROCKTON AVE.

HORIZ. SCALE: 1" = 40'
 VERT. SCALE: 1" = 4'

ACCT. NO.: 9591927152-440223xx
 W.O. #: 0701428
 R-3974
 SHEET 2 OF 5
 FILE: COMMON/COMPLETE/R-3974



NOTE:
 1. CONTINUE ALL AC PAVEMENT REHAB. WORK FROM STA. 34+00 TO PALM AVE.
 2. R&R 25± L.F. C&G AND 100± S.F. S/W BETWEEN ARCH WAY AND PALM AVE.
 3. CONST. DRIVEWAY APPROACH PER STD. 302 (TYPE PL-1) AT THE FOLLOWING ADDRESSES BETWEEN ARCH WAY AND PALM AVE.: 4532, 4538, 4546, 4554, 4562, AND 4689.

BENCHMARK ID: H5-B2
 ELEVATION: 778.598
 P.K. NAIL AND CITY ENGINEER TAG IN THE BASE OF A TA OF THE NORTHEASTERLY CURB RETURN AT STREETER AVE.

STATION	CHORD BEARING	CHORD DISTANCE	ARC BEARING	ARC DISTANCE
6	89°33'47"	19.76'	30.89'	19.61'
5	89°32'43"	19.76'	30.55'	19.38'

CURVE DATA

ENGINEER IN RESPONSIBLE CHARGE
 PHILIP HANNAWI
 R.C.E. No. 44747 expires 3/31/2008
 DATE: 2/26/07



MARK	REVISIONS	APPR.	DATE

CITY OF RIVERSIDE, CALIFORNIA
 PUBLIC WORKS DEPARTMENT

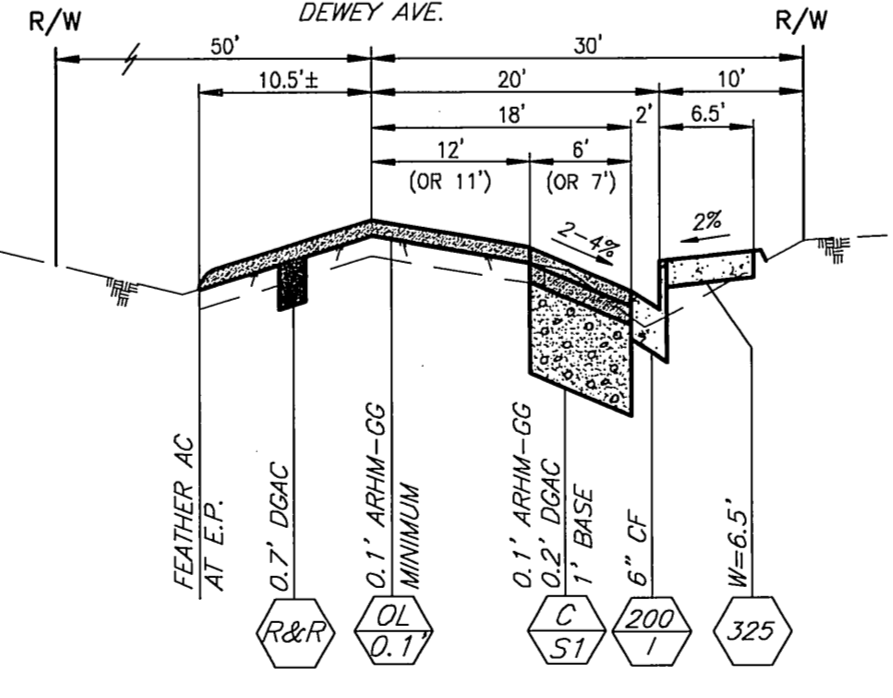
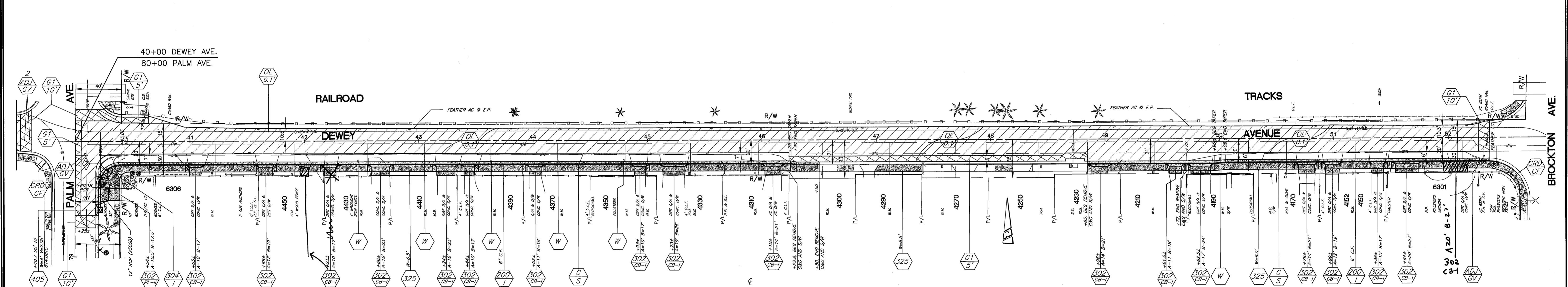
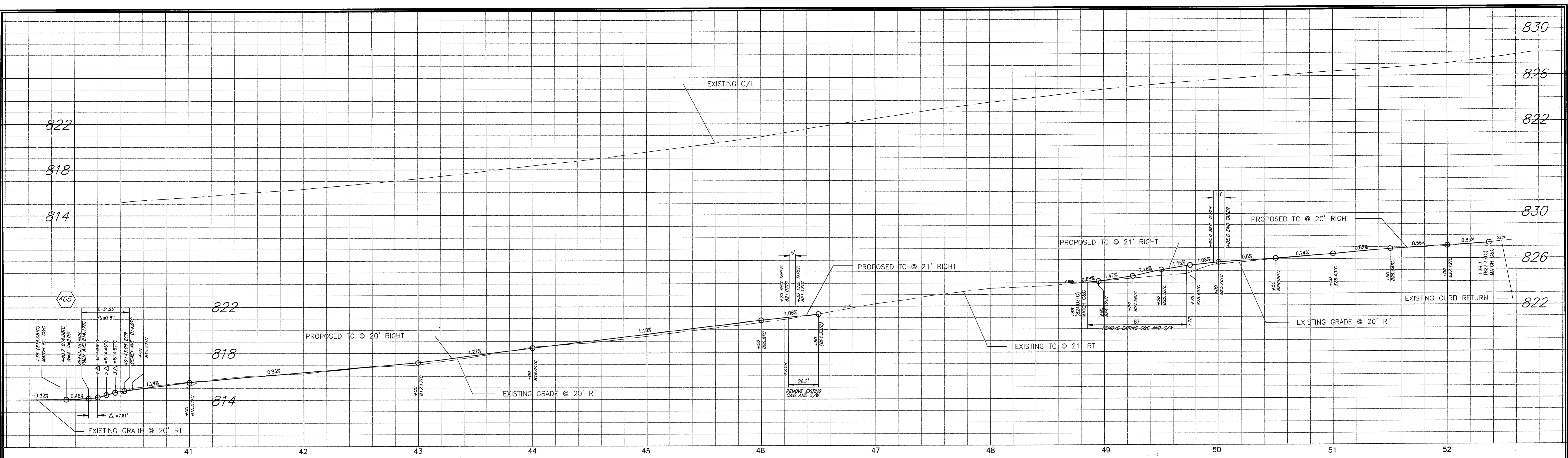
APPROVED BY: [Signature]
 ENGINEERING MANAGER
 TRAFFIC DIVISION
 SURVEYOR
 STREET SERVICES
 CONST. CONTRACT ADMIN.

DATE: 2/26/07

DEWEY AVENUE IMPROVEMENTS
 FROM STREETER AVE. TO BROCKTON AVE.

HORIZ. SCALE: 1" = 40'
 VERT. SCALE: 1" = 4'

ACCT. NO.: 9591927152-440223xx
 W.O. : 0701428
R-3974
 SHEET 3 OF 5
 FILE: COMMON/COMPLETE/R-3974



DEWEY AVE. TYPICAL SECTION
(NTS)
FROM STA. 40+44 TO 46+25 AND
FROM STA. 50+06 TO 52+36

BENCHMARK ID: H5-B2
ELEVATION: 778.598
P.K. NAIL AND CITY ENGINEER TAG IN THE
BASE OF A TA OF THE NORTHEASTERLY
CURB RETURN AT STREETER AVE.

7	89°28'04"	20'	31.23'	19.82'
Δ	R	L	T	
CURVE DATA				

ENGINEER IN RESPONSIBLE CHARGE
Philip Hannawi
PHILIP HANNAWI
R.C.E. No. 44747 expires 3/31/2008
DATE: 2/26/07



DESIGNED BY: EYL DRAWN BY: EYL CHECKED BY: PH

CITY OF RIVERSIDE, CALIFORNIA
PUBLIC WORKS DEPARTMENT

APPROVED BY: *[Signature]* DATE: 2/26/07
ENGINEERING MANAGER
PRINCIPAL ENGINEER
TRAFFIC DIVISION
SURVIVOR
STREET SERVICES
CONST. CONTRACT ADMIN.

DEWEY AVENUE IMPROVEMENTS
FROM STREETER AVE. TO BROCKTON AVE.

HORIZ. SCALE: 1" = 40' VERT. SCALE: 1" = 4'

ACCT. NO.: 9591927152-440223xx
W.D. : 0701428
R-3974
SHEET 4 OF 5
FILE: COMMON/COMPLETE/R-3974

IRRIGATION CONSTRUCTION NOTES:

- ALL IRRIGATION LINES TO BE INSTALLED UNDER HARDSCAPE AREAS SHALL BE INSTALLED IN SCH. 40 P.V.C. SLEEVES. MINIMUM SLEEVE SIZE SHALL BE TWICE THE DIAMETER OF THE IRRIGATION PIPE SIZE.
- ALL IRRIGATION CONTROL WIRES TO BE INSTALLED UNDER HARDSCAPE AREAS SHALL BE INSTALLED IN A MINIMUM OF 2" SCH. 40 P.V.C. SLEEVE.
- ALL IRRIGATION VALVES, BALL VALVES, QUICK COUPLERS AND BOXES ARE TO BE LOCATED IN PLANTING AREAS AND EVERY VALVE SHOULD HAVE ITS OWN VAULT.
- BACKFLOW PREVENTER WITH PRESSURE REGULATOR ARE REQUIRED.

POINT OF CONNECTION ELECTRIC NOTES

- ALL FACILITIES INSTALLED BY THE CONTRACTOR SHALL BE INSPECTED AND APPROVED BY THE UTILITIES DEPT. CONSTRUCTION INSPECTOR (PH. 826-5429). ANY CHANGES SHALL BE APPROVED BY THE UTILITIES DEPT. PRIOR TO EXECUTION. THE CONTRACTOR SHALL BE RESPONSIBLE FOR COORDINATING ALL PHASES OF CONSTRUCTION WITH THE UTILITIES DEPT. CONSTRUCTION INSPECTOR AND CONSTRUCTION SUPERINTENDENT (PH. 351-6173).
- ALL IRRIGATION CONTROLLER FEED POINTS TO BE CONNECTED BY PUBLIC UTILITIES DEPT. AND ENERGIZED WHEN CLEARED BY UTILITIES DEPT. INSPECTOR.
- ALL WIRE TO BE #8 CU. THW OR AS SHOWN ON THE PLANS.
- CONDUIT AND FITTINGS TO BE IN CONFORMANCE WITH UGS-100. BACKFILL TO BE TYPE AND COMPACTED AS SPECIFIED IN UGS-100.1.
- PROVIDE RELEASE LETTER AUTHORIZING ENERGIZATION, SIGNED BY RESPONSIBLE PERSON IN CHARGE. OBTAIN FORM LETTER FROM UTILITY INSPECTOR.

P.O.C. DATA ELECTRICAL SERVICE

METER SIZE: NON-METERED SERVICE (120V/240V)
 SERVICE ADDRESS: _____
 VOLTAGE: SINGLE PHASE
 NOTE: CONNECTING TO NEAREST POWER POLE. SUBJECT TO REVIEW AND APPROVAL OF P.U.E. DIVISION.

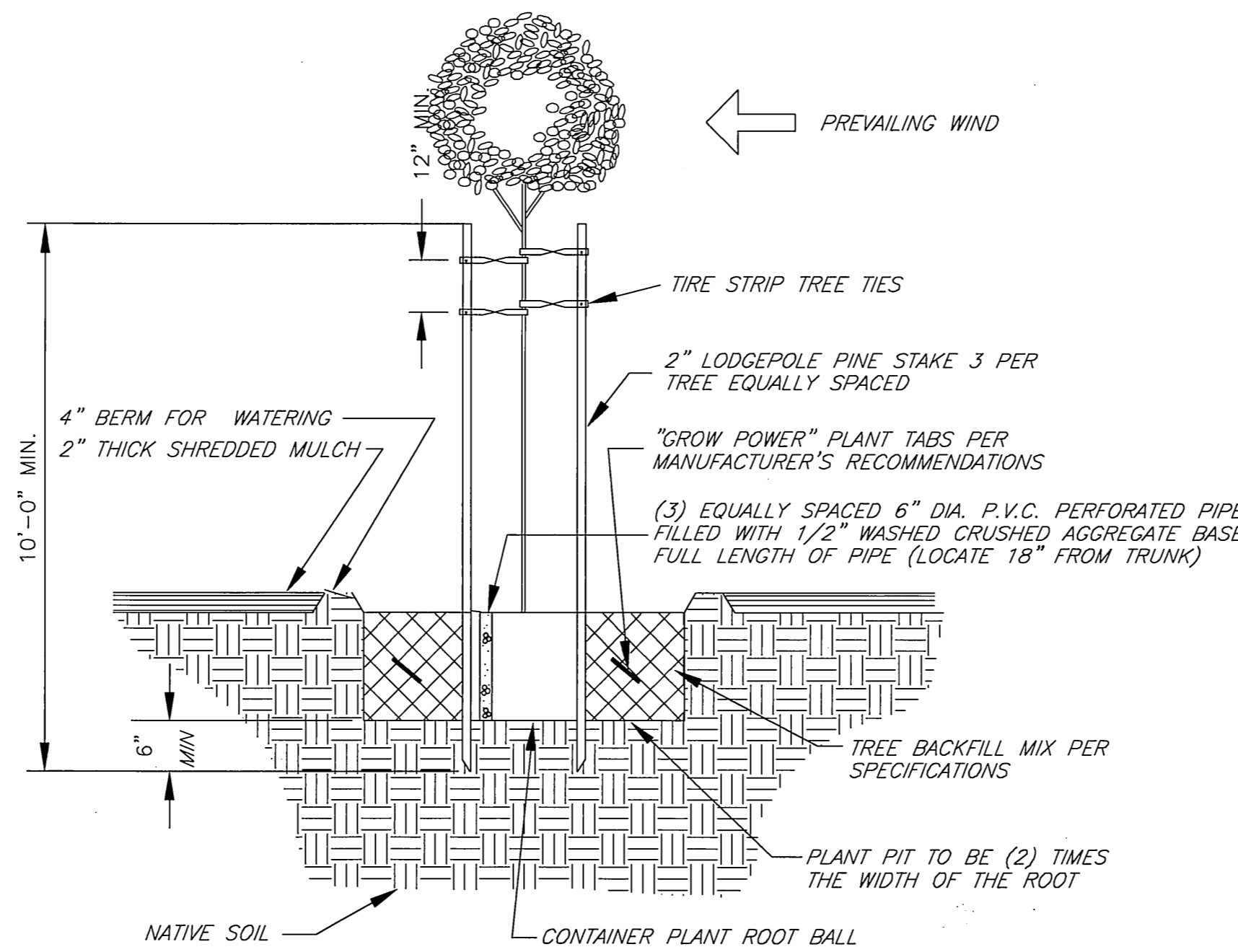
P.O.C. DATA WATER SERVICE

METER SIZE: 2 INCHES (MAXIMUM)
 SERVICE ADDRESS: _____
 ELEVATION: _____
 PRESSURE ZONE: xxxx ZONE
 STATIC PRESSURE: xx P.S.I.
 SERVED AREA: HIGHEST ELEV.: _____
 LOWEST ELEV.: _____
 **MAX. GPM DEMAND: G.P.M.
 **METER NO.: _____

** : INFORMATION PROVIDED BY CONTRACTOR AS "AS-BUILT" INFORMATION.

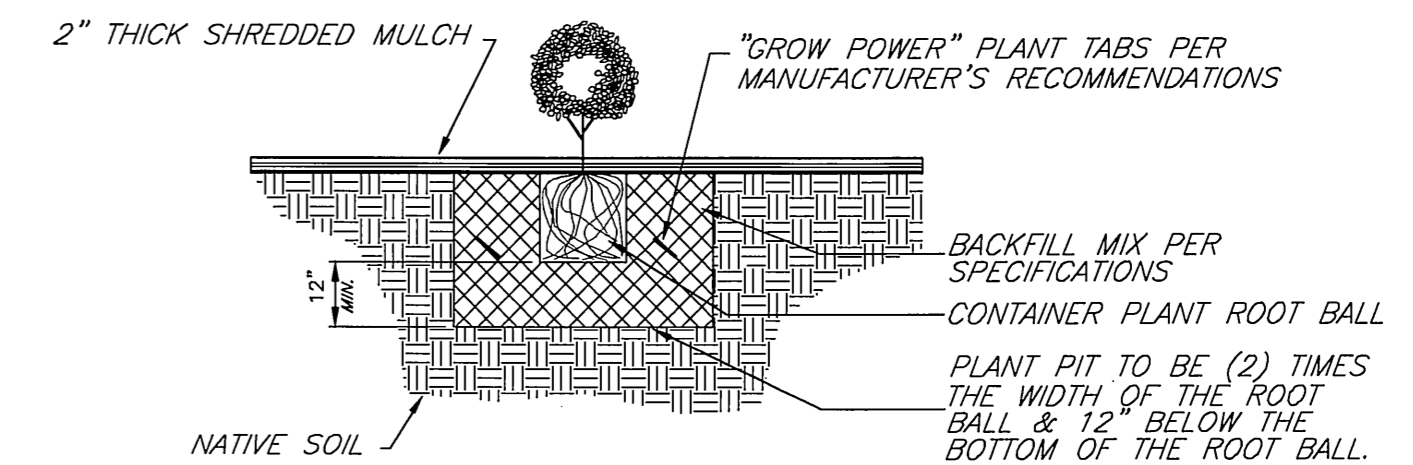
GENERAL NOTES FOR PUBLIC LANDSCAPES:

- ALL RELATED WORK SHALL CONFORM TO THE CITY OF RIVERSIDE PUBLIC WORKS DEPARTMENT STANDARDS AND SPECIFICATIONS FOR PLANTING AND IRRIGATION WORK. (SECTION 02441 AND 02483).
- A "PUBLIC LANDSCAPE" PERMIT, AS ISSUED BY THE PUBLIC WORKS DEPARTMENT IS REQUIRED. CONTACT THE PUBLIC WORKS LANDSCAPE INSPECTOR AT (951) 351-6103 TO SCHEDULE A PRE-CONSTRUCTION MEETING AND TO OBTAIN THE PERMIT.
- WHEN CALLING FOR INSPECTIONS CONTACT THE PUBLIC WORKS LANDSCAPE INSPECTOR A MINIMUM OF 48 HOURS IN ADVANCE TO SCHEDULE AN INSPECTION. A WRITTEN APPROVAL WILL BE PROVIDED ON THE PUBLIC LANDSCAPE PERMIT CARD FOR EACH STAGE OF INSPECTION. A VERBAL APPROVAL WILL NOT BE ACCEPTABLE. INSPECTIONS ARE REQUIRED PER THE STANDARD SPECIFICATION, AND INCLUDE BUT ARE NOT NECESSARILY LIMITED TO THE FOLLOWING:
 - AFTER COMPLETION OF FINAL GRADING AND WHEN ALL UTILITY SERVICES HAVE BEEN MARKED, BUT PRIOR TO INITIATING ANY LANDSCAPE WORK WITHIN THE PUBLIC RIGHT OF WAY.
 - AT TIME OF INSTALLATION OF IRRIGATION SLEEVES AND CONSANT PRESSURE MAINLINES, BUT PRIOR TO BACKFILL OF TRENCHES (NOTE: MAINLINES MUST BE PRESSURE TESTED IN THE PRESENCE OF PUBLIC WORKS LANDSCAPE INSPECTOR.
 - AT TIME OF INSTALLATION OF IRRIGATION VALVES, LATERALS AND HEADS;
 - FOR SPOTTING OF ALL TREES PRIOR TO DIGGING PLANTING PITS;
 - WHILE DIGGING PLANT PITS AND PLANTING/RELOCATING TREES;
 - AFTER PLANTING AND ALL OTHER INDICATED OR SPECIFIED WORK HAS BEEN COMPLETED, FOR START OF MAINTENANCE;
 - AT SUBSTANTIAL COMPLETION OF THE PROJECT FOR CITY'S ACCEPTANCE TO START THE REQUIRED MAINTENANCE PERIOD;
 - AT THE END OF MAINTENANCE PERIOD, THE CONTRACTOR/DEVELOPER SHALL CALL THE PUBLIC WORKS LANDSCAPE INSPECTOR AT THE NUMBER LISTED ABOVE FOR A FINAL ACCEPTANCE INSPECTION IN OEDER TO BE RELEASED FROM MAINTENANCE. CONTRACTOR'S BOND WILL NOT BE RELEASED UNTIL AFTER CITY'S ISSUANCE OF WRITTEN NOTIFICATION THAT THE PROJECT HAS PASSED FINAL INSPECTION AND THE PUBLIC WORKS DEPARTMENT IS ASSUMING MAINTENANCE RESPONSIBILITIES.
- THE CONTRACTOR/DEVELOPER SHALL BE RESPONSIBLE TO ACCEPTABLY MAINTAIN ALL PLANTINGS FOR A MINIMUM PERIOD AS SPECIFIED IN THE BID DOCUMENTS.
- CONTRACTOR SHALL KEEP EXISTING IRRIGATION SYSTEMS OPERATIONAL AND SHALL BE RESPONSIBLE FOR REPLACING ANY DEAD PLANTS AND TREES AT THE CONTRACTOR'S EXPENSES.



MEDIAN TREE PLANTING / STAKING DETAIL

- NOTES:**
- STAKES SHALL NOT PIERCE ROOTBALL AND SHALL EXTEND INTO UNDISTURBED SOIL.
 - PLACE "GROW POWER" TABS IN PLANT CONTAINER PRIOR TO PLANTING FOR OBSERVATION PURPOSES.



CONTAINER PLANTING MEDIAN PLANTER

- NOTES:**
- UNTANGLE MATTED ROOTS BY LOOSENING ALL ROOTS AT EDGE OF ROOT BALL WITH WATER FROM HOSE. DO NOT CRACK ROOT BALL.
 - PLACE "GROW POWER" TABS IN PLANT CONTAINER PRIOR TO PLANTING FOR OBSERVATION PURPOSES.

PLANTING NOTES:

- CONTRACTOR SHALL CALL THE ENGINEER'S ATTENTION TO SITE CONDITIONS WHICH PREVENT HIS INSTALLATION PER PLAN IN A REASONABLE MANNER.
- REPLACEMENT OF DAMAGED OR DESTROYED PLANTINGS SHALL TAKE PLACE WITHIN 48 HOURS OF NOTIFICATION BY THE ENGINEER, OR SAID REPLACEMENT ITEMS SHALL BE DEDUCTED FROM THE CONTRACTOR'S FINAL BILLING.
- REPLACEMENT ITEMS SHALL BE EXACT DUPLICATE OF ORIGINAL WORK OR PLANTS, UNLESS OTHERWISE APPROVED BY THE ENGINEER.
- IRRIGATION SYSTEM SHALL BE INSTALLED PRIOR TO PLANT MATERIAL.
- TREES SHALL BE PLANTED AFTER CONCRETE PLACEMENT, BUT NOT BEFORE IRRIGATION COVERAGE HAS BEEN APPROVED.
- PLACE TREES BETWEEN SPRAY HEADS WHEREVER POSSIBLE.
- A SITE SHALL BE PRE-SELECTED BY THE ENGINEER FOR PLANT DELIVERY AND APPROVAL, FOR MIXING OF BACKFILL.
- CLEAN-UP SHALL TAKE PLACE ON A DAILY BASIS UNLESS OTHERWISE APPROVED BY THE CITY'S REPRESENTATIVE.
- MAINTENANCE PERIOD SHALL BE A MINIMUM OF ONE YEAR (365) CONSECUTIVE CALENDER DAYS FOR STREET TREES AND A MINIMUM OF NINETY (90) CONSECUTIVE CALENDER DAYS FOR SHRUBS AND SODS FROM DATE OF ACCEPTANCE. MAINTENANCE SHALL INCLUDE BI-WEEKLY WEED AND RODENT ABATEMENT PROCEDURES INCLUDING FOLIAR APPLICATION OF CHELATED IRON AND TRACE MINERALS 90 DAYS APART.

PLANTING LEGEND						
ITEM	SYMBOL	BOTANICAL NAME	COMMON NAME	SIZE	REMARKS	QUANTITY
TREE T-1		STENOCARPUS SINUATUS	FIREWHEEL TREE	24" BOX	SPACED @ 40' O.C.	32 E.A.
MULCH		MULCH MATERIAL	SHREDDED MULCH	2" THICK MEDIAN GRIND	WITHIN PLANTING AREA	49,300 S.F.
SHRUB S-1		SALVIA MEXICANA	MEXICAN SAGE	5 GAL.	SPACED @ 10' O.C.	93 E.A.
SHRUB S-2		PITTOSPORUM TENUIFOLIUM	----	15 GAL.	SPACED @ 8' O.C.	159 E.A.
SHRUB S-3		SENNA ARTEMISIOIDES	FEATHERY CASSIA	5 GAL.	SPACED @ 6' O.C.	212 E.A.
SHRUB S-4		HEMEROCALLIS	DAY LILY (YELLOW)	1 GAL.	SPACED @ 24" O.C.	100 E.A.
SHRUB S-5		TULBAGHIA VIOLACEA	SOCIETY GARLIC (TRICOLOR)	1 GAL.	SPACED @ 18"-24" O.C.	161 E.A.

ENGINEER IN RESPONSIBLE CHARGE
 PHILIP HANNAW
 R.C.E. No. 44747 expires 3/31/2008
 DATE: 2/26/07



DESIGNED BY	FYL	DRAWN BY	FYL	CHECKED BY	PH
-------------	-----	----------	-----	------------	----

CITY OF RIVERSIDE, CALIFORNIA
 PUBLIC WORKS DEPARTMENT

APPROVED BY: [Signature]
 ENGINEERING MANAGER
 PRINCIPAL ENGINEER
 CONS. CONTRACT ADMIN.
 STREET SERVICES
 TRAFFIC DIVISION
 SURVEYOR

DATE: 2/26/07

DEWEY AVENUE IMPROVEMENTS
 FROM STREETER AVE. TO BROCKTON AVE.

ACCT. NO.: 9591927152-440223xx
 W.D. : 0701428

R-3974
 SHEET 5 OF 5

HORIZ. SCALE: -- VERT. SCALE: -- FILE: COMMON/COMPLETE/R-3974