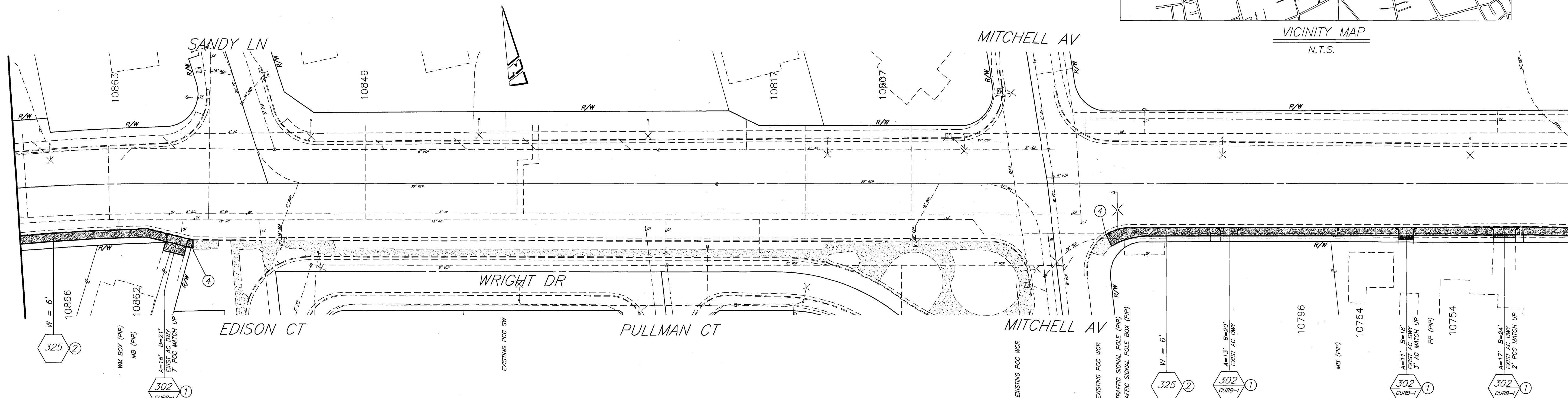
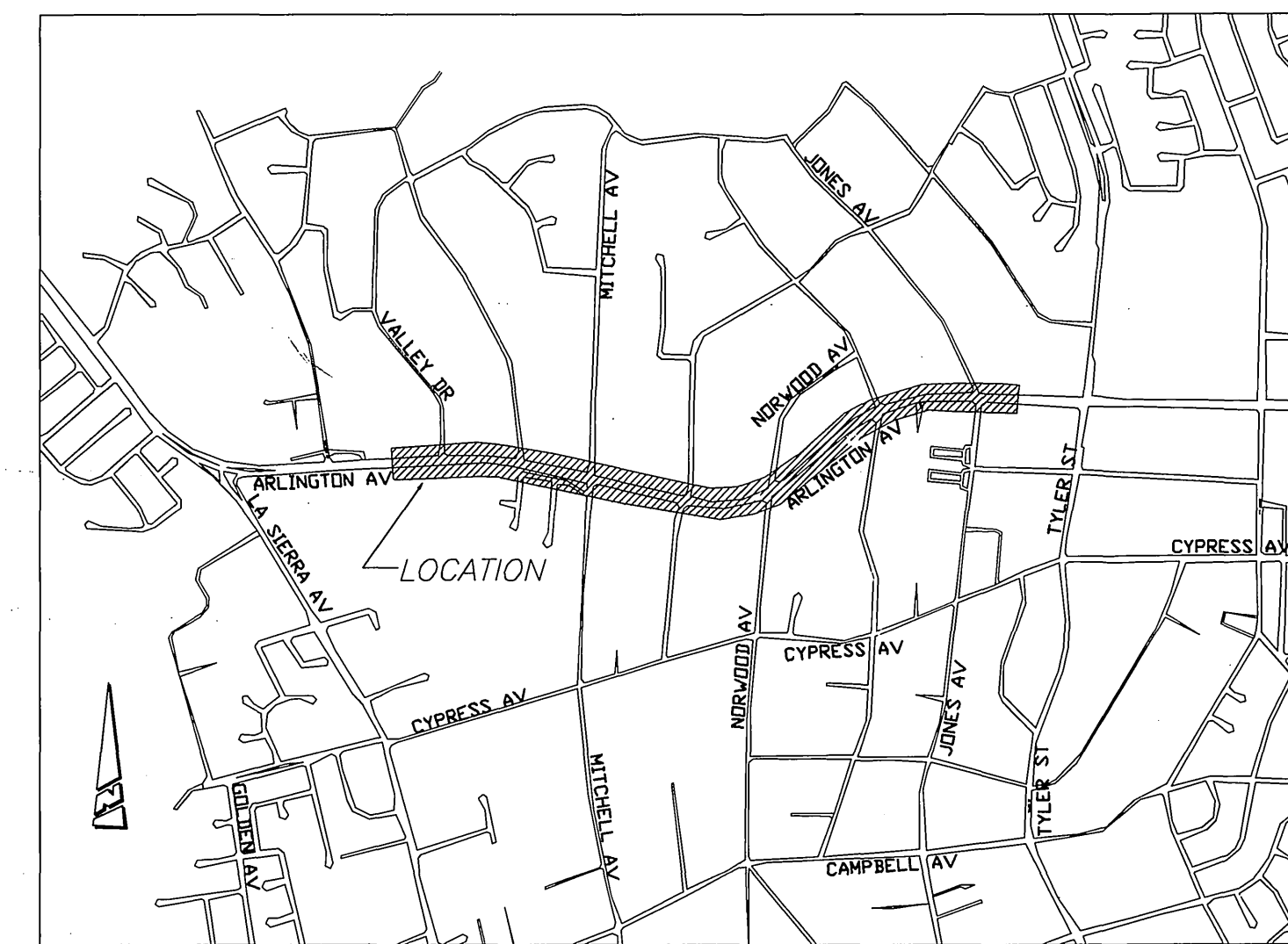


SPECIFIC CONSTRUCTION NOTES

- NUMBERS ABOVE 100 IN A HEXAGON ON THE PLAN REFER TO THE RESPECTIVE STANDARD DRAWING AND SHALL BE CONSTRUCTED ACCORDINGLY. UNLESS MODIFICATIONS ARE NOTED ON THE PLAN OR COVER SHEET. ANY NUMBER SHOWN BELOW THE STANDARD DRAWING NUMBER INDICATES THE SPECIFIC ALTERNATE TO BE CONSTRUCTED.
- REM REMOVE EXISTING FACILITY, IMPROVEMENT OR OBJECT IN CONFLICT WITH CONSTRUCTION.
- 325 CONSTRUCT PCC SIDEWALK PER CITY STANDARD DRAWING 325
- 302 CONSTRUCT PCC DRIVEWAY APPROACH PER CITY STANDARD DRAWING 302. EXACT LOCATION TO BE FIELD VERIFIED BY THE CITY.
- 1 REMOVE EXISTING AC DRIVEWAY APPROACH
- 2 REMOVE EXIST AC SIDEWALK
- 3 REMOVE TREE (BY OTHERS)
- 4 JOIN EXISTING. EXACT LOCATION TO BE FIELD VERIFIED BY CITY

GENERAL CONSTRUCTION NOTES

1. EXISTING UTILITIES SHOWN ON THIS PLAN ARE PLOTTED FROM UTILITY RECORDS. THE CONTRACTOR IS REQUIRED TO TAKE DUE PRECAUTIONARY MEASURES TO LOCATE AND PROTECT ALL UTILITIES WHETHER OR NOT SHOWN ON THIS PLAN. IF THE COVER OF A UTILITY IS KNOWN, IT IS SHOWN IN THE PROFILE. UTILITIES SHOWN IN THE PROFILE AS "X" INDICATES THAT THE COVER IS UNKNOWN, BUT THE UTILITY IS NOT EXPECTED TO INTERFERE WITH THE PROPOSED IMPROVEMENTS.
2. ALL ELEVATIONS SHOWN ON THE PLAN VIEW SHALL BE STAKED IN THE FIELD.
3. PRIME CONTRACTOR BIDDING THIS WORK SHALL HAVE A CLASS "A" LICENSE.
4. CONSTRUCTION SHALL BE IN ACCORDANCE WITH THE CITY OF RIVERSIDE STANDARD SPECIFICATIONS AND STANDARD SPECIFICATIONS FOR PUBLIC WORKS CONSTRUCTION, LATEST EDITION.
5. TRIM EDGE OF EXISTING PAVEMENT WHERE NEW PAVEMENT JOINS, TO A SMOOTH STRAIGHT LINE.



Underground Service Alert
 CALL BEFORE YOU DIG
 CALL:TOLL FREE
 1-800
 227-2600
 TWO WORKING DAYS BEFORE YOU DIG

ENGINEER IN RESPONSIBLE CHARGE
 Ibrahim A. Massoud
 R.C.E. No. 64224 expires 6/30/07
 DATE 2-15-07



MARK	REVISIONS	APPR.	DATE

CITY OF RIVERSIDE, CALIFORNIA PUBLIC WORKS DEPARTMENT

APPROVED BY	BY	DATE	APPROVED BY
ENGINEERING MANAGER	[Signature]	2/16/07	CITY ENGINEER
PRINCIPAL ENGINEER			
STREET SERVICES SUPERVISOR			
TRAFFIC DIVISION			
CONST. CONT ADMIN			

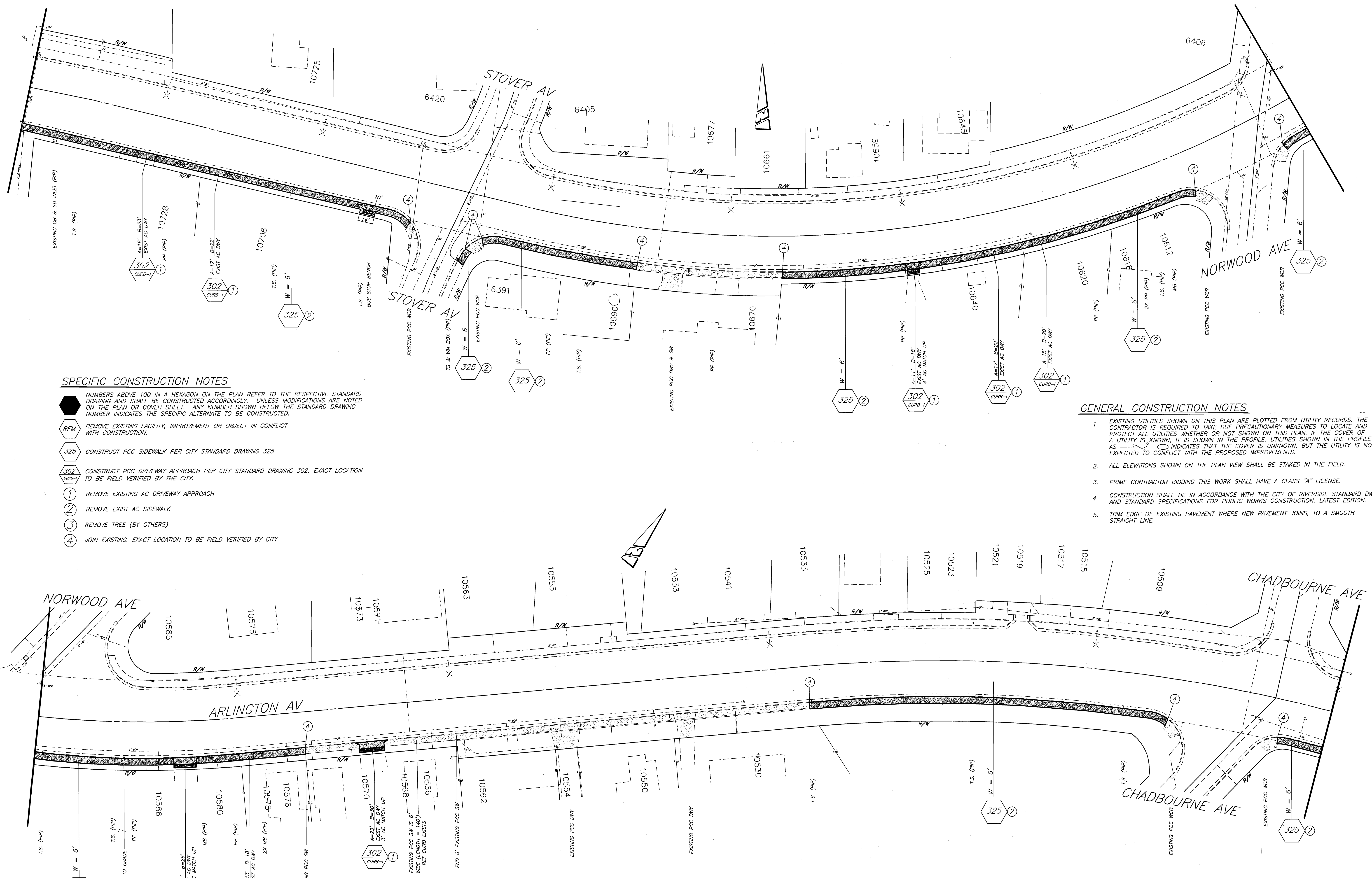
ARLINGTON AVE SIDEWALK CONSTRUCTION BETWEEN LA SIERRA AVE TO TYLER ST

HORIZ. SCALE: 1" = 40' VERT. SCALE: 1" = 4'

R-3998
 SHEET 1 OF 3
 FILE NO.

INDEXED 5-07-07 LHM

FEBRUARY 2007
6: (Common) [Engineering Files] Projects Streets Arlington Sidewalk
ARLINGTON AVENUE SIDEWALK CONSTRUCTION



SPECIFIC CONSTRUCTION NOTES

- NUMBERS ABOVE 100 IN A HEXAGON ON THE PLAN REFER TO THE RESPECTIVE STANDARD DRAWING AND SHALL BE CONSTRUCTED ACCORDINGLY. UNLESS MODIFICATIONS ARE NOTED ON THE PLAN OR COVER SHEET, ANY NUMBER SHOWN BELOW THE STANDARD DRAWING NUMBER INDICATES THE SPECIFIC ALTERNATE TO BE CONSTRUCTED.
- REM** REMOVE EXISTING FACILITY, IMPROVEMENT OR OBJECT IN CONFLICT WITH CONSTRUCTION.
- 325** CONSTRUCT PCC SIDEWALK PER CITY STANDARD DRAWING 325
- 302 CURB-1** CONSTRUCT PCC DRIVEWAY APPROACH PER CITY STANDARD DRAWING 302. EXACT LOCATION TO BE FIELD VERIFIED BY THE CITY.
- 1** REMOVE EXISTING AC DRIVEWAY APPROACH
- 2** REMOVE EXIST AC SIDEWALK
- 3** REMOVE TREE (BY OTHERS)
- 4** JOIN EXISTING. EXACT LOCATION TO BE FIELD VERIFIED BY CITY

GENERAL CONSTRUCTION NOTES

1. EXISTING UTILITIES SHOWN ON THIS PLAN ARE PLOTTED FROM UTILITY RECORDS. THE CONTRACTOR IS REQUIRED TO TAKE DUE PRECAUTIONARY MEASURES TO LOCATE AND PROTECT ALL UTILITIES WHETHER OR NOT SHOWN ON THIS PLAN. IF THE COVER OF A UTILITY IS KNOWN, IT IS SHOWN IN THE PROFILE. UTILITIES SHOWN IN THE PROFILE AS INDICATES THAT THE COVER IS UNKNOWN, BUT THE UTILITY IS NOT EXPECTED TO CONFLICT WITH THE PROPOSED IMPROVEMENTS.
2. ALL ELEVATIONS SHOWN ON THE PLAN VIEW SHALL BE STAKED IN THE FIELD.
3. PRIME CONTRACTOR BIDDING THIS WORK SHALL HAVE A CLASS "A" LICENSE.
4. CONSTRUCTION SHALL BE IN ACCORDANCE WITH THE CITY OF RIVERSIDE STANDARD DWGS AND STANDARD SPECIFICATIONS FOR PUBLIC WORKS CONSTRUCTION, LATEST EDITION.
5. TRIM EDGE OF EXISTING PAVEMENT WHERE NEW PAVEMENT JOINS, TO A SMOOTH STRAIGHT LINE.

Underground Service Alert
CALL BEFORE YOU DIG
CALL: TOLL FREE
1-800-227-2600
TWO WORKING DAYS BEFORE YOU DIG

ENGINEER IN RESPONSIBLE CHARGE
Ibrahim A. Massoud
IBRAHIM A. MASSOUD
R.C.E. No. 64224 expires 6/30/07
DATE 2-15-07

REGISTERED PROFESSIONAL ENGINEER
IBRAHIM A. MASSOUD
No. 64224
Exp. 6-30-2007
CIVIL
STATE OF CALIFORNIA

DESIGNED BY	APR	DRAWN BY	LPTM/JYL	CHECKED BY	
MARK		REVISIONS		APPR. DATE	

CITY OF RIVERSIDE, CALIFORNIA PUBLIC WORKS DEPARTMENT			
APPROVED BY	BY	DATE	APPROVED BY
ENGINEERING MANAGER	<i>[Signature]</i>	2/15/07	<i>[Signature]</i>
PRINCIPAL ENGINEER			CITY ENGINEER
STREET SERVICES			
SURVEYOR			
TRAFFIC DIVISION			
CONST. CONT. ADMIN			

ARLINGTON AVE SIDEWALK CONSTRUCTION
BETWEEN
LA SIERRA AVE TO TYLER ST

R-3998
SHEET 2 OF 3
FILE NO.

HORIZ. SCALE: 1" = 40' VERT. SCALE: 1" = 4'

INDEXED 8-07-07

