

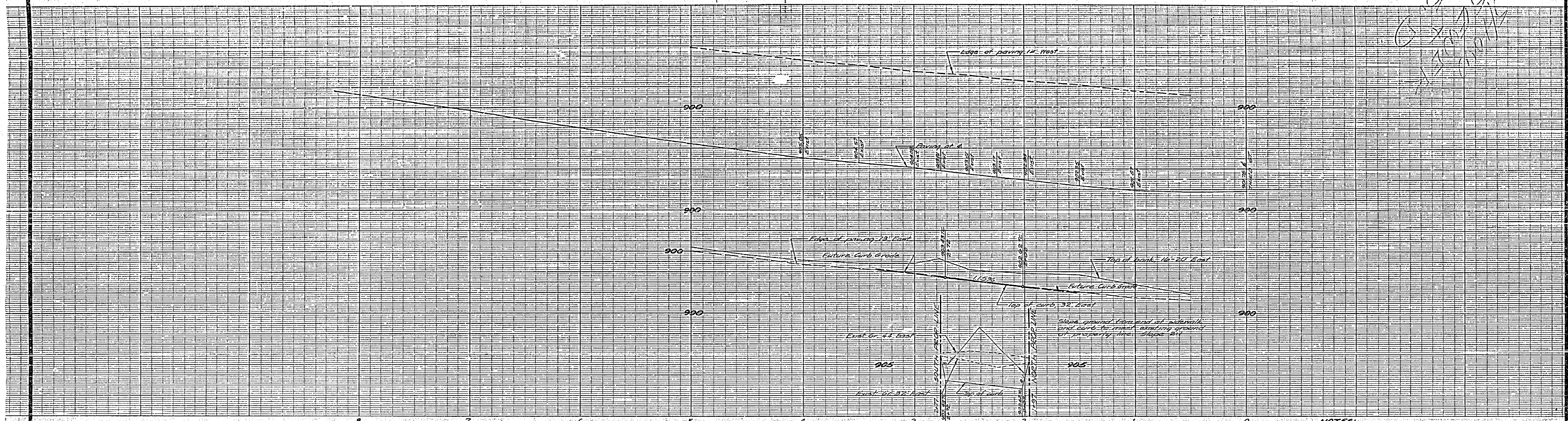
ON SCALE MADE IN 1/4" = 1'-0"  
UNIFORM IN 1/4" = 1'-0"

ENGINEER DIEBOLD CO  
RIVER  
SPECIALISTS

ON SCALE MADE IN 1/4" = 1'-0"  
UNIFORM IN 1/4" = 1'-0"

ENGINEER DIEBOLD CO  
RIVER  
SPECIALISTS

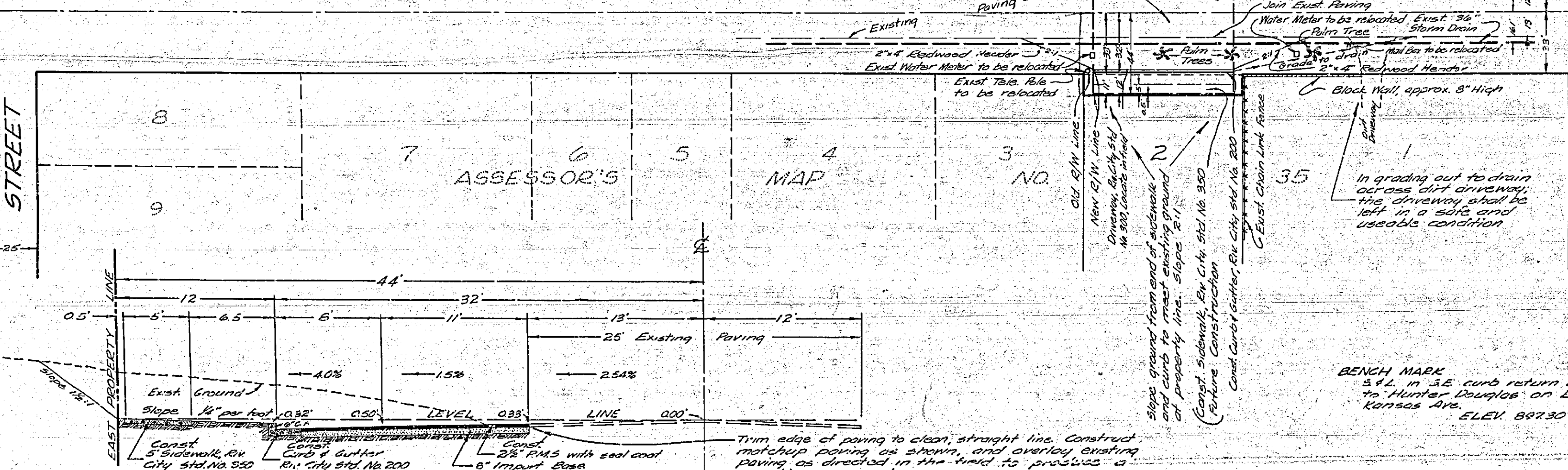
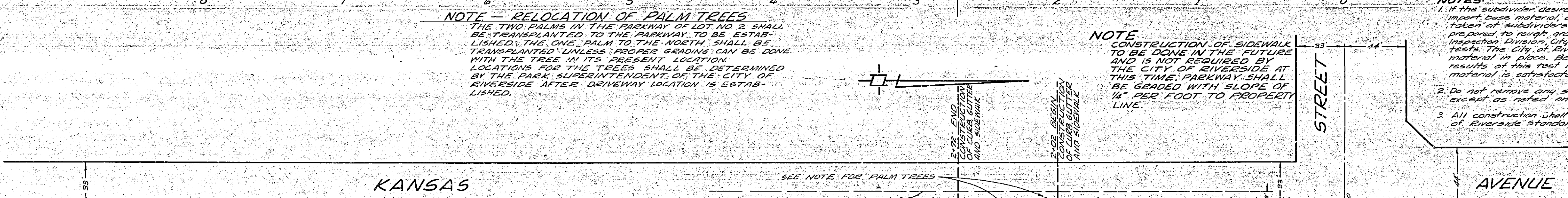
*Handwritten notes and signatures in the top right corner.*



**NOTE - RELOCATION OF PALM TREES**  
THE TWO PALMS IN THE PARKWAY OF LOT NO. 2 SHALL BE TRANSPLANTED TO THE PARKWAY TO BE ESTABLISHED. THE ONE PALM TO THE NORTH SHALL BE TRANSPLANTED UNLESS PROPER GRADING CAN BE DONE WITH THE TREE IN ITS PRESENT LOCATION. LOCATIONS FOR THE TREES SHALL BE DETERMINED BY THE PARK SUPERINTENDENT OF THE CITY OF RIVERSIDE AFTER DRIVEWAY LOCATION IS ESTABLISHED.

**NOTE**  
CONSTRUCTION OF SIDEWALK TO BE DONE IN THE FUTURE AND IS NOT REQUIRED BY THE CITY OF RIVERSIDE AT THIS TIME. PARKWAY SHALL BE GRADED WITH SLOPE OF 1/4" PER FOOT TO PROPERTY LINE.

**NOTES:**  
1. If the subdivider desires to reduce requirements on import base material, additional soil tests may be taken at subdividers expense or the subdivider prepared to rough grade, subdivider will contact Inspection Division, City of Riverside, before making tests. The City of Riverside will make a test of base material in place. Before paving can be installed results of this test must indicate that the base material is satisfactory to the Inspection Division.  
2. Do not remove any street trees on Kansas Ave. except as noted on plan.  
3. All construction shall be in accordance with City of Riverside standard specifications No. 400.



**TYPICAL SECTION**  
KANSAS AVENUE  
STA 1+97 TO STA 2+77  
SCALE 1" = 6'

REVISION - July 15, 1960  
NOTICE OF NOTICE THAT SIDEWALK IS NOT REQUIRED AND WILL BE FUTURE CONSTRUCTION. PARKWAY GRADING SHALL BE PROVIDED, OR NOT.  
APPROVED BY: *[Signature]* DATE: 7-11-60  
PREP. SUPERINTENDENT  
APPROVED BY: *[Signature]* DATE: 7-6-60  
J. F. DAVIDSON - CIVIL ENGINEER  
R.E. NO. 862  
RIVERSIDE, CALIFORNIA  
APPROVED BY: *[Signature]* DATE: 7-6-60  
CITY OF RIVERSIDE, CALIFORNIA  
DEPARTMENT OF PUBLIC WORKS  
STREET PLAN & PROFILE  
KANSAS AVENUE  
For: SIDNEY GRAY  
HORIZ. SCALE 1" = 40' VERT. SCALE 1" = 4'  
APPROVED BY: *[Signature]* NO. R-400  
Director of Public Works  
DATE 7-13-60 SHEET 1 OF 1

