

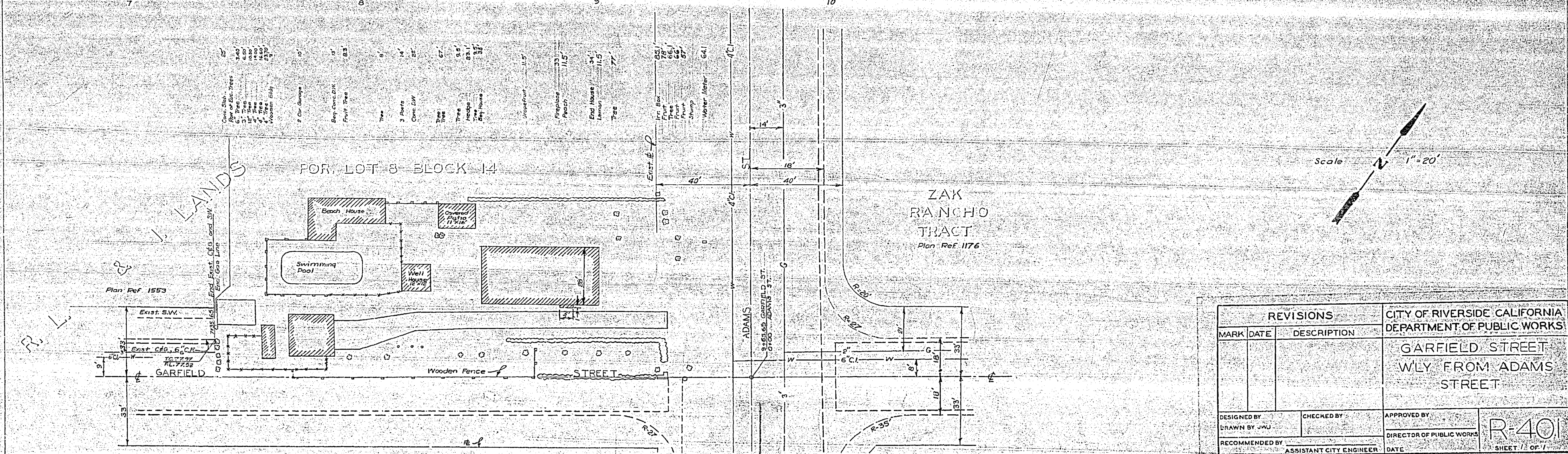
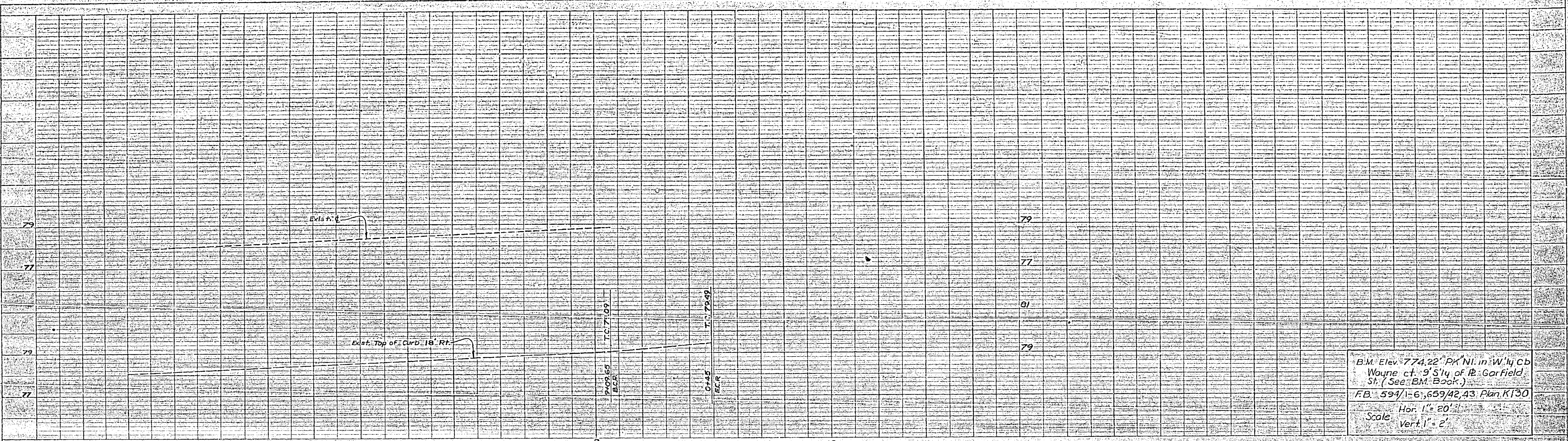
THE FREEDMAN BROS. CO. CHICAGO
ENGINEERS AND ARCHITECTS

TABLE OF CONTENTS

PLAN	1
SECTION	1
DETAILS	1

REVISIONS

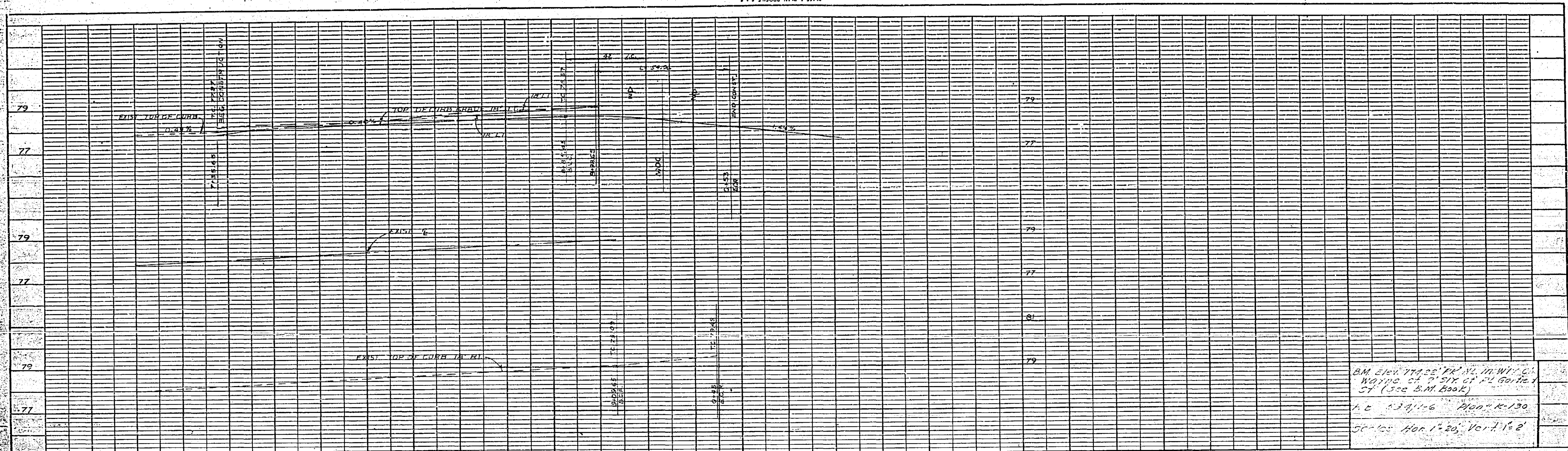
NO.	DATE	DESCRIPTION
1		



REVISIONS			CITY OF RIVERSIDE CALIFORNIA DEPARTMENT OF PUBLIC WORKS
MARK	DATE	DESCRIPTION	
			GARFIELD STREET WLY FROM ADAMS STREET

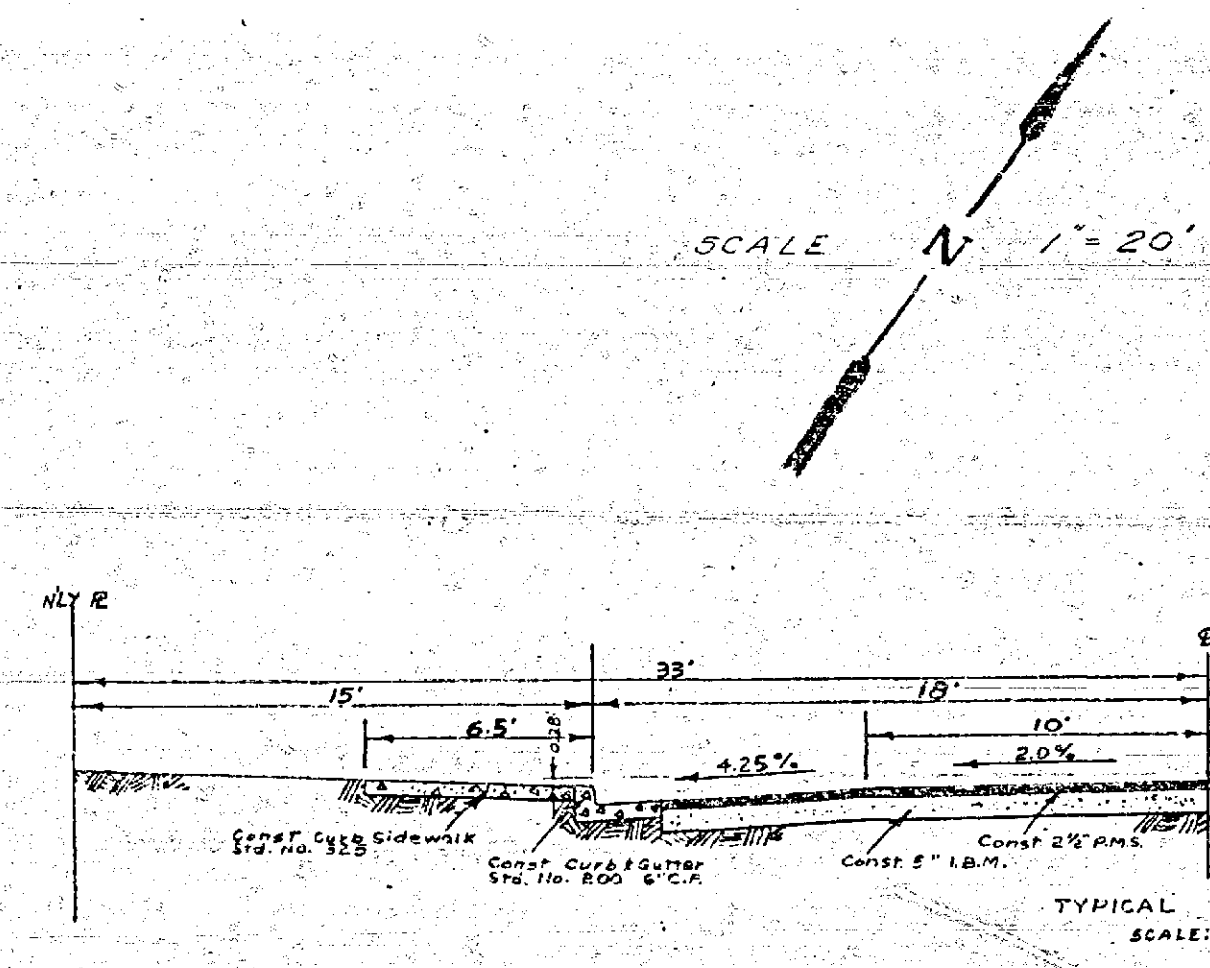
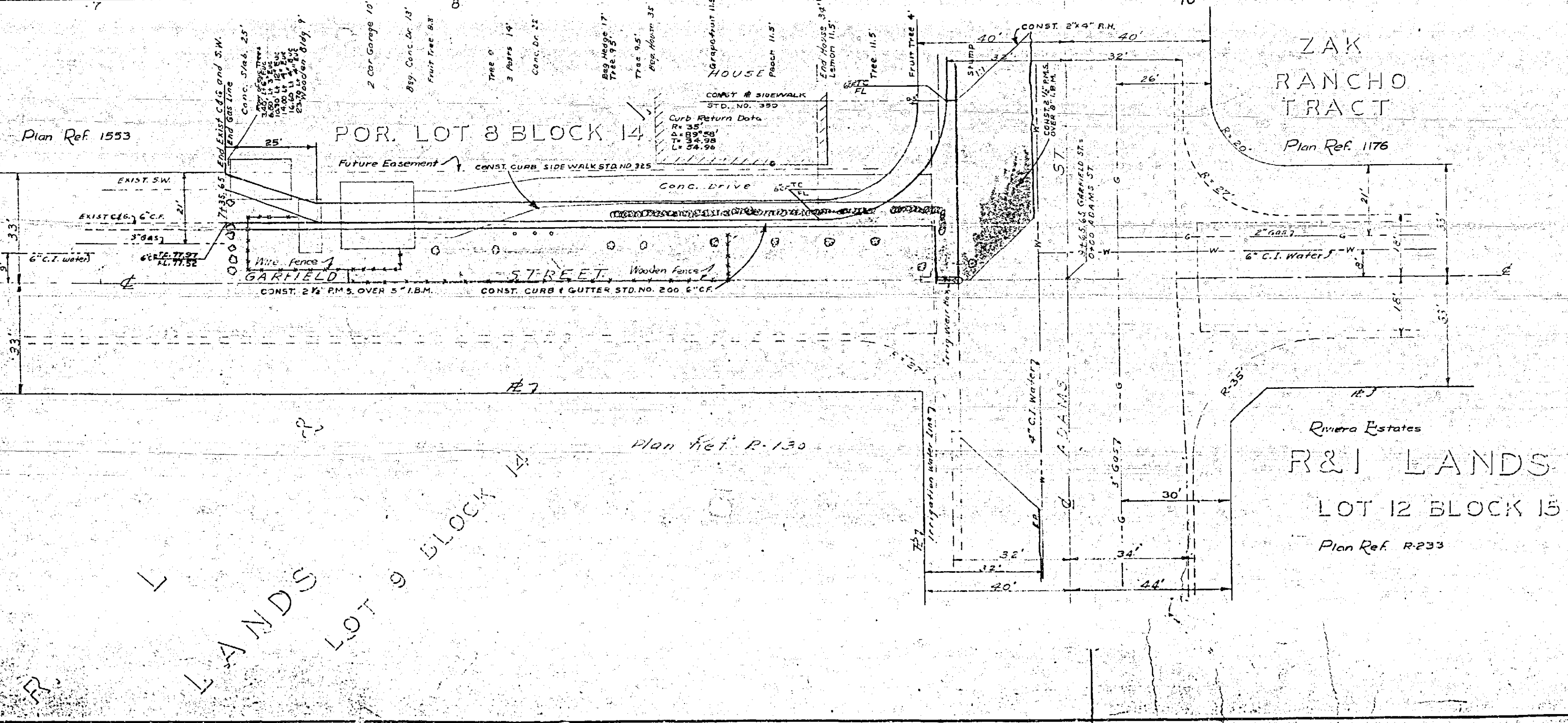
DESIGNED BY DRAWN BY J.W.J.	CHECKED BY	APPROVED BY
RECOMMENDED BY	ASSISTANT CITY ENGINEER	DIRECTOR OF PUBLIC WORKS
DATE		

R-401
SHEET 1 OF 1



B.M. Elev. 774.22' F.R. N. IN W. 1/4 C. 1
 WATERS OF 2' SIX IN. DIAM. GARFIELD
 ST. (See B.M. Book)
 L.S. 13411-6 Plan R-130
 Series Hor. 1"=20', Vert. 1"=2'

NO.	DATE	DESCRIPTION



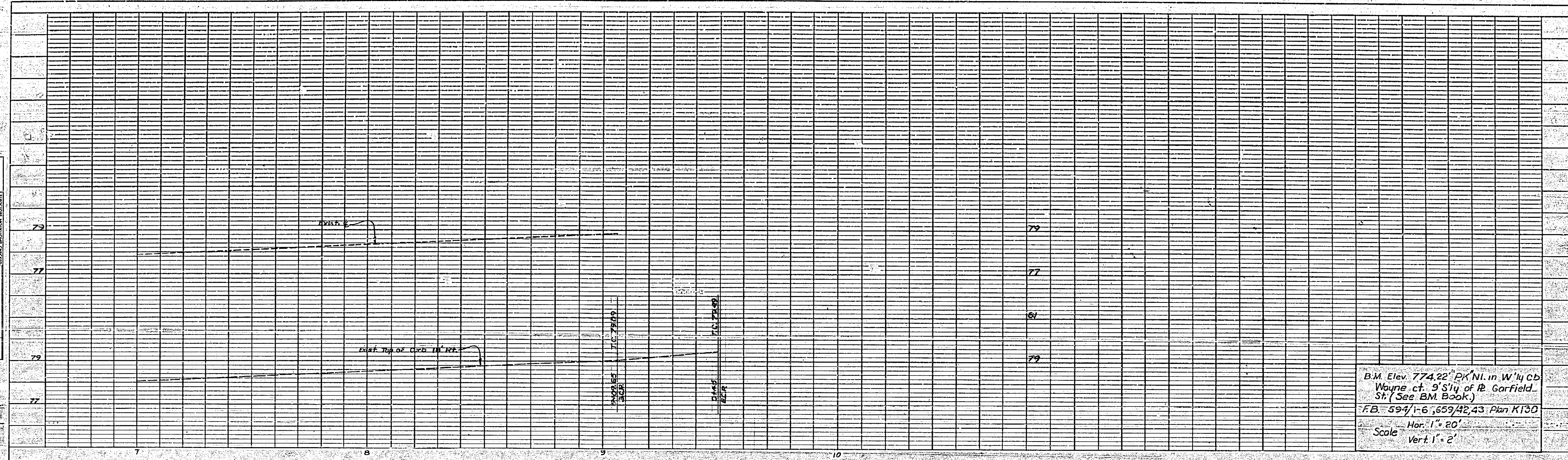
REVISIONS			CITY OF RIVERSIDE CALIFORNIA DEPARTMENT OF PUBLIC WORKS	
MARK	DATE	DESCRIPTION	GARFIELD ST. WLY. FROM ADAMS STREET	
			DESIGNED BY	APPROVED BY
			DRAWN BY	DIRECTOR OF PUBLIC WORKS
			RECOMMENDED BY	DATE
			ASSISTANT CITY ENGINEER	

R-401
 SHEET 7 OF 13

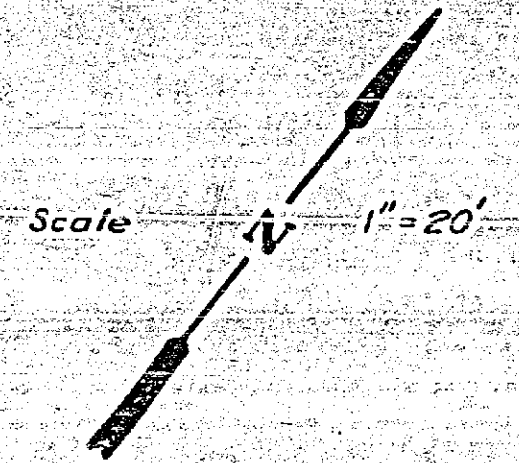
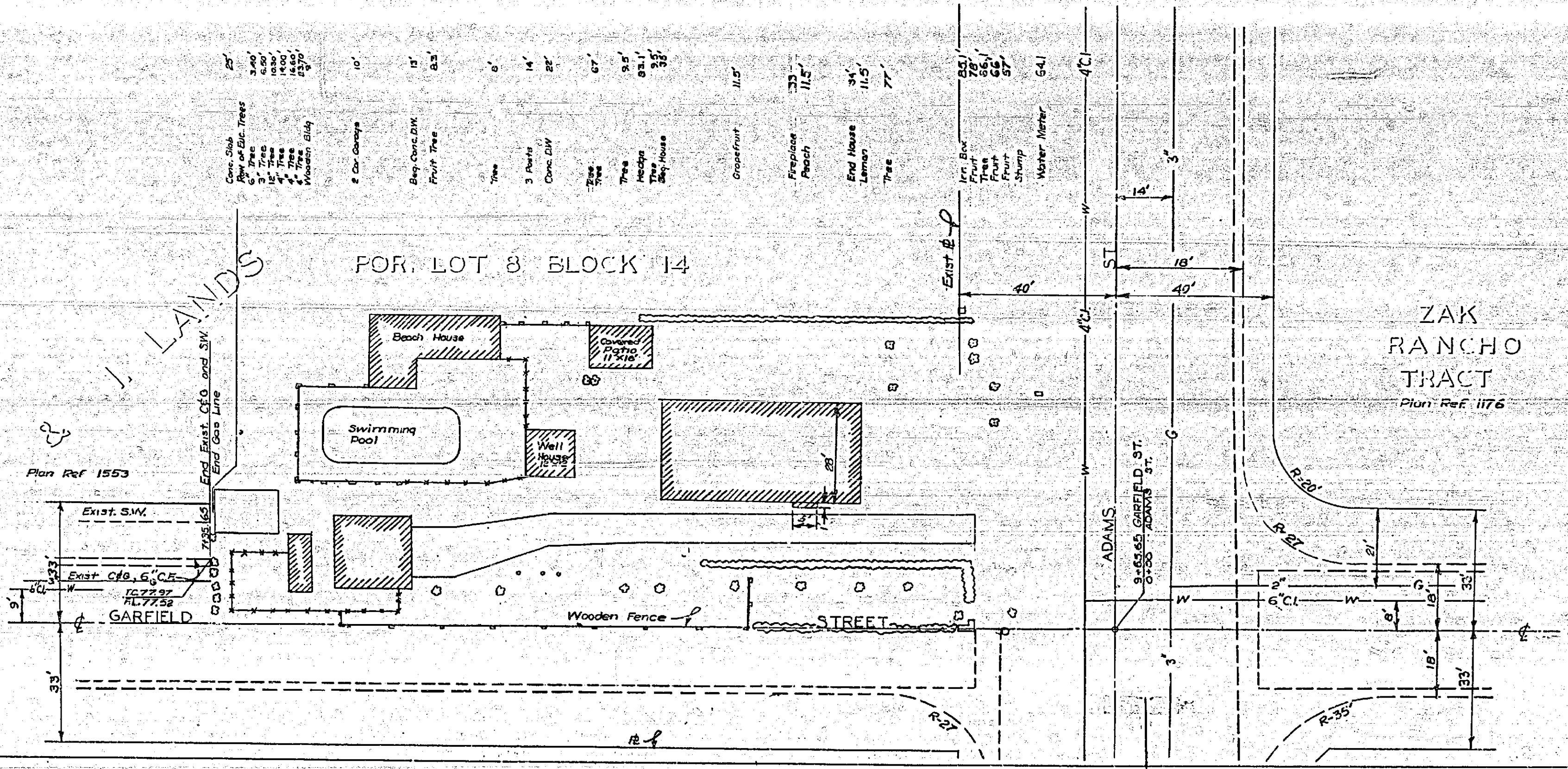
THE LAMSON BROS. CO. CHICAGO
 MADE IN U.S.A. BUDGET 6" x 9" x 1/2" 8 1/2" x 11" x 1/2"

NO.	DATE	DESCRIPTION

NO.	DATE	DESCRIPTION



B.M. Elev. 774.22' P.K. NI. in W'ly CB
 Wayne ct. 9 S'y of R. Garfield
 St. (See B.M. Book)
 F.B. 594/1-6, 659/42, 43 Plan K130
 Scale Hor. 1" = 20'
 Vert. 1" = 2'



REVISIONS		CITY OF RIVERSIDE CALIFORNIA DEPARTMENT OF PUBLIC WORKS
MARK	DATE	
		GARFIELD STREET W'LY FROM ADAMS STREET
DESIGNED BY	CHECKED BY	APPROVED BY
DRAWN BY JMJ		DIRECTOR OF PUBLIC WORKS
RECOMMENDED BY	ASSISTANT CITY ENGINEER	DATE

R-401
 SHEET 1 OF 12