

B.M. ELEV 86158 S&L IN ELY CURB OF MADISON 5' SLY  
 E. EVANS ST.  
 F.B. 616/1-20.677/24.683/6 x 739  
 SCALE: HOR. 1"=20' VERT. 1"=2'

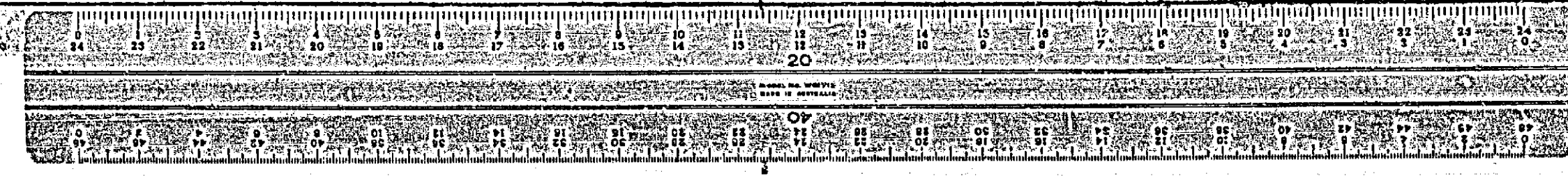


MARK	DATE	DESCRIPTION
△	10/26/07	1st Approach minor S&L
▽	2/26/03	2nd Approach minor S&L
▽	2/26/03	3rd Approach minor S&L
▽	2/26/03	4th Approach minor S&L
▽	2/26/03	5th Approach minor S&L
▽	2/26/03	6th Approach minor S&L
▽	2/26/03	7th Approach minor S&L
▽	2/26/03	8th Approach minor S&L
▽	2/26/03	9th Approach minor S&L
▽	2/26/03	10th Approach minor S&L

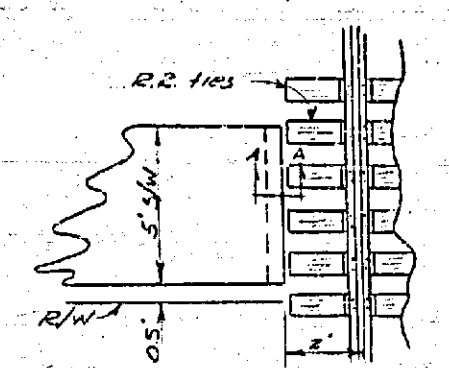
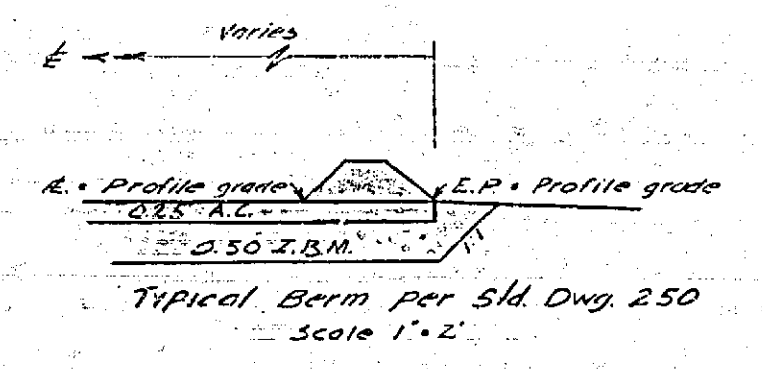
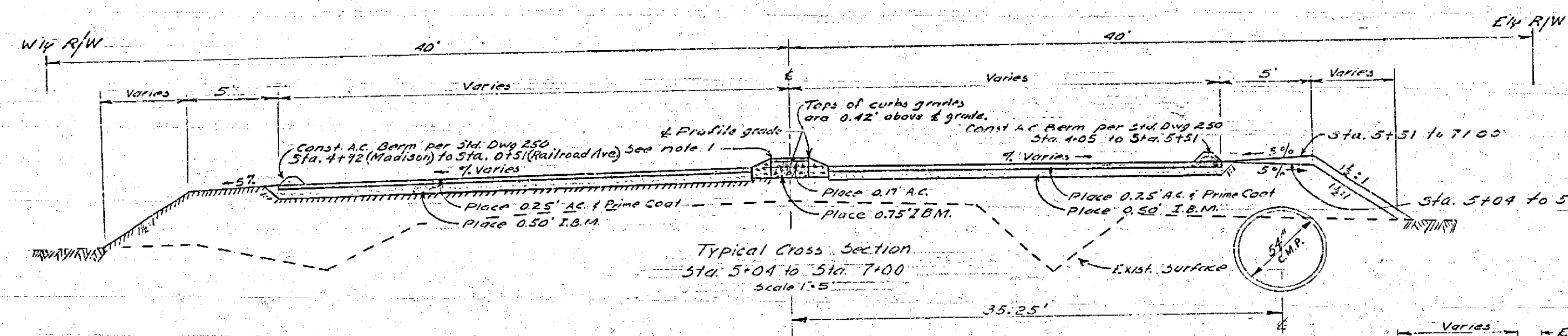
ACC. NO. 01-3060-3015  
 CITY OF RIVERSIDE CALIFORNIA  
 DEPARTMENT OF PUBLIC WORKS  
 MADISON STREET  
 AT  
 A.T. & S.F. CROSSING  
 AT&S.F. CROSSING NO. 2B-117  
 APPROVED BY: [Signature]  
 DIRECTOR OF PUBLIC WORKS  
 R-404  
 DATE: 12-5-07  
 SHEET 1 OF 2

PROFILE  
 NO. 1  
 DATE: 12-5-07  
 SHEET 1 OF 2

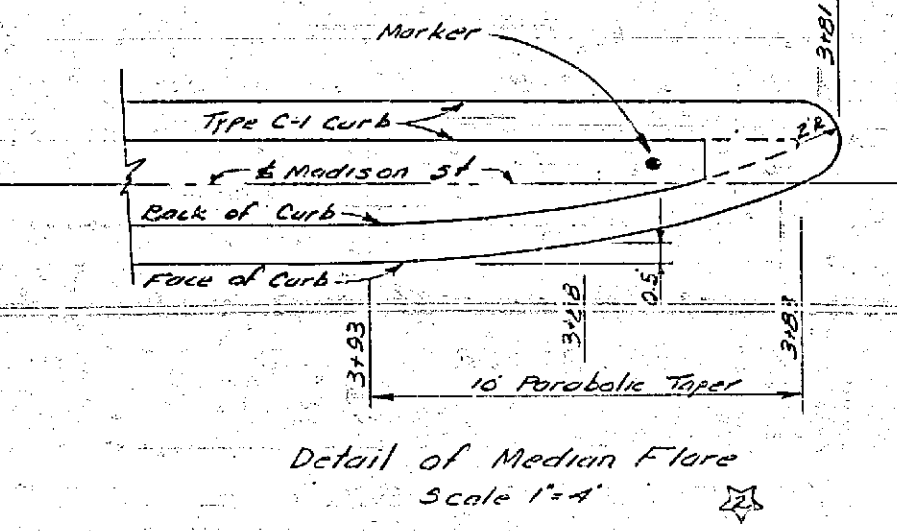
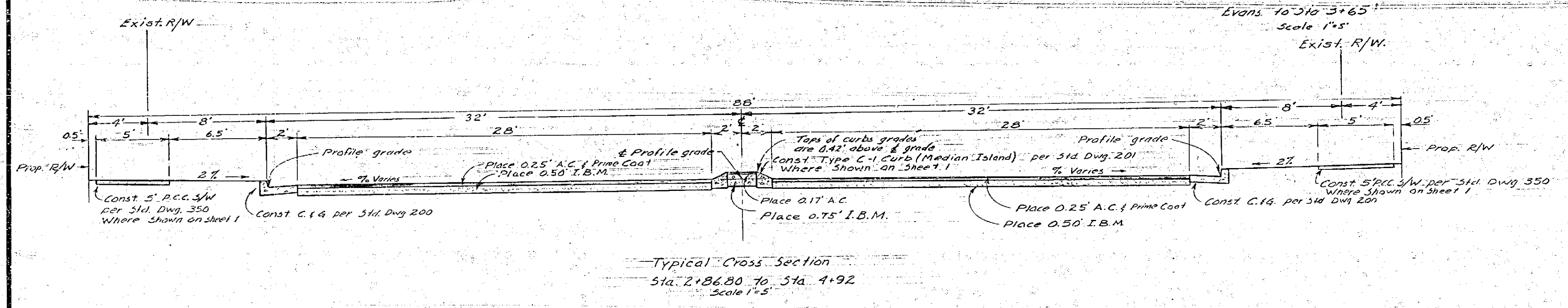
PLAN  
 NO. 1  
 DATE: 12-5-07  
 SHEET 1 OF 2







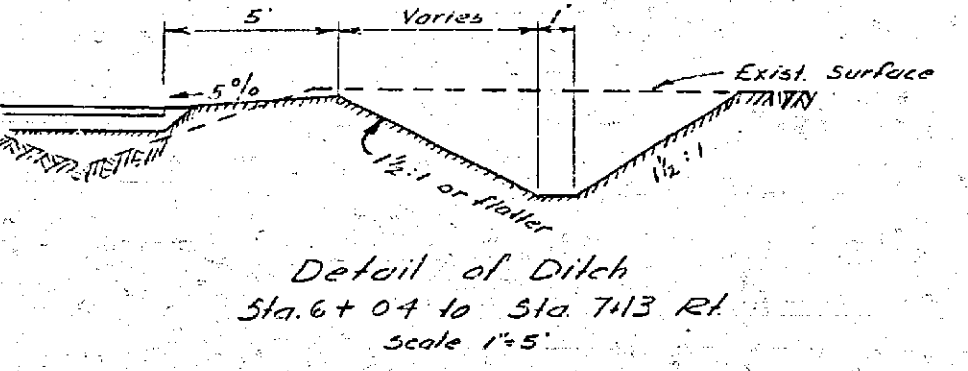
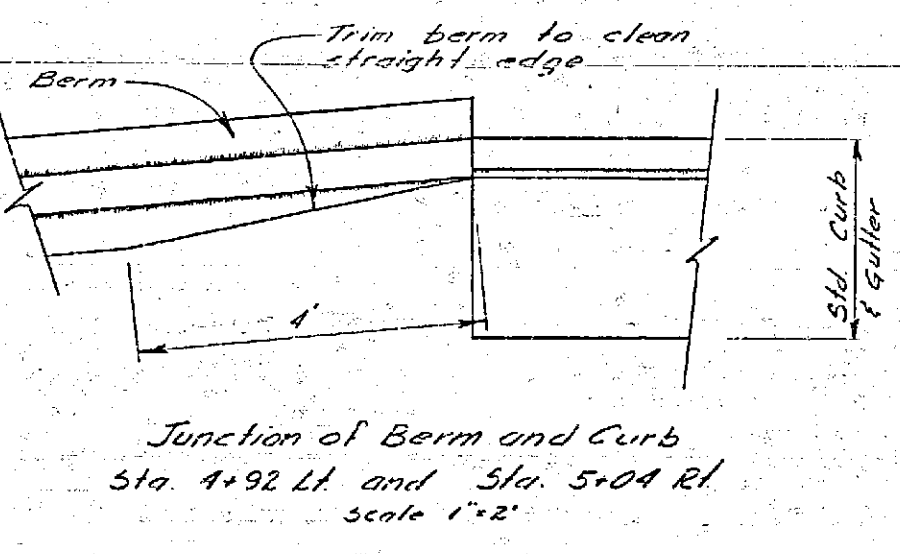
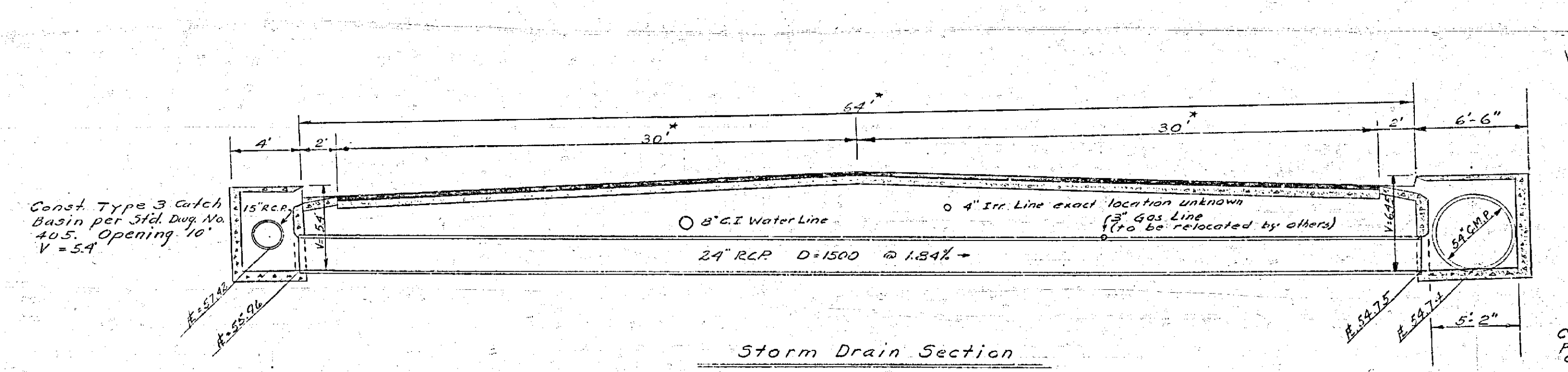
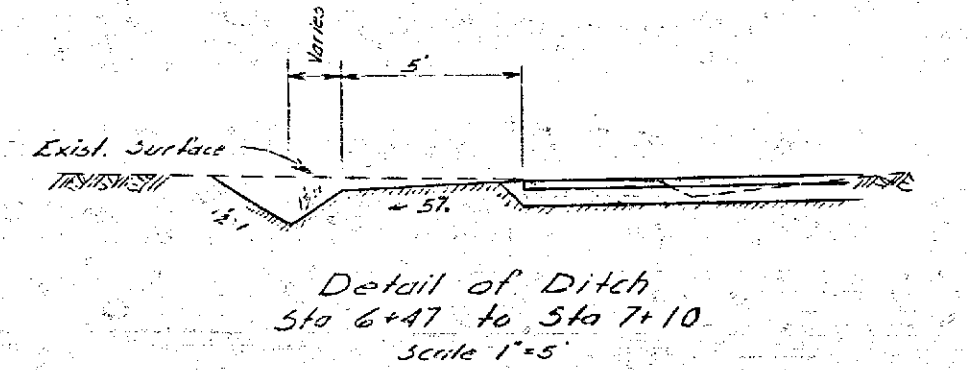
SECTION A-A  
 Note: Construct cutoff walls where sidewalk terminates at railroad ties.



Estimated By Quantities

Proposed Excavation	549	CY
Proposed Berms	1,000	CY
Proposed Base Material	500	CY
Asphalt Concrete	500	CY
Asphalt Concrete Berm	170	LF
4" Curb & Gutter, 5' W	277	LF
C-1 Curb	245	LF
Concrete	110	CY
Driveway Approach	363	sq. ft.
Crack Sealant	400	LF
Reinforced Concrete	21	LF
Adjust. Material to Grade	2	LF
5" Bitum. 1,000' D	150	LF
5" Bitum. 1,000' D	50	LF
15" Bitum. 1,000' D	20	LF
2" Bitum. 1,000' D	20	LF
4" Curb Basin	1	EA
Markers	4	EA

Notes:  
 1. Where Median Islands are omitted, continue 0.25' A.C. & Prime Coat and 0.50' I.B.M. to Street.



Construct Type 3 Catch Basin per Std. Dwg. No. 405. Opening 10' x 6.45' x 5'2" wide.

\*Dimensions are perpendicular to street &  
 Note: Exercise caution when excavating near water, gas and irrigation lines.

REVISIONS			CITY OF RIVERSIDE, CALIFORNIA DEPARTMENT OF PUBLIC WORKS	
MARK	DATE	DESCRIPTION		
Δ	7-25-62	Change Sidewalk Approach		
2	2-2-62	Revised Median and Driveway		

MADISON STREET  
 AT  
 A.T. & S.F. CROSSING  
 AT&SF CROSSING NO. 2B-13.7

DESIGNED BY	SUBMITTED BY	APPROVED BY	PROJ. NO. 01-3040-3015
DRAWN BY	PARK DEPT.	TRAFFIC DIV.	
CHECKED BY	RECOMMENDED BY	DATE 12-2-62	R-404 SHEET 2 of 2