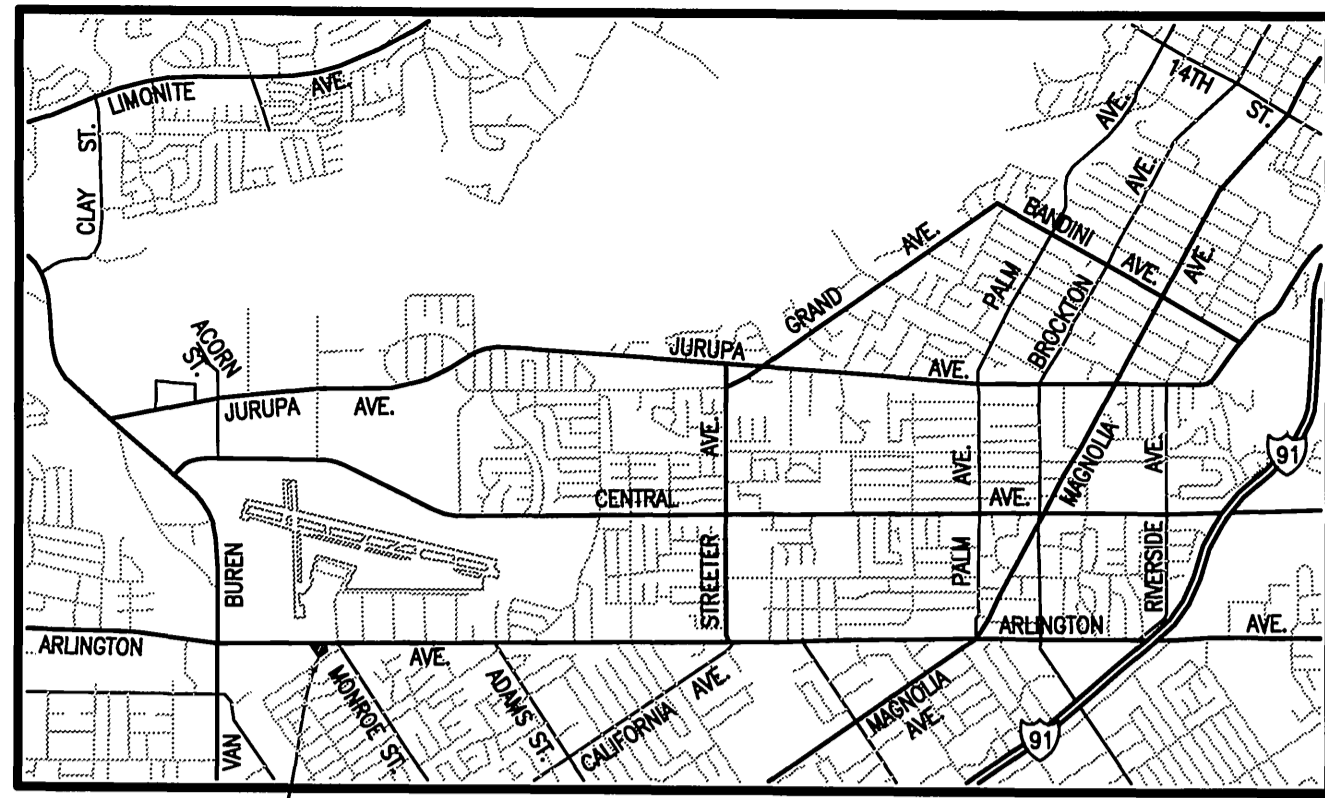


IMPROVEMENT PLAN FOR ARLINGTON AVENUE STA. 17+91.49 TO 21+92.75

GENERAL NOTES

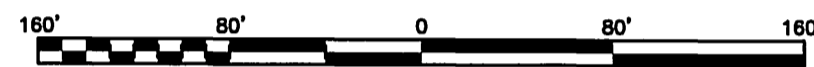


SITE

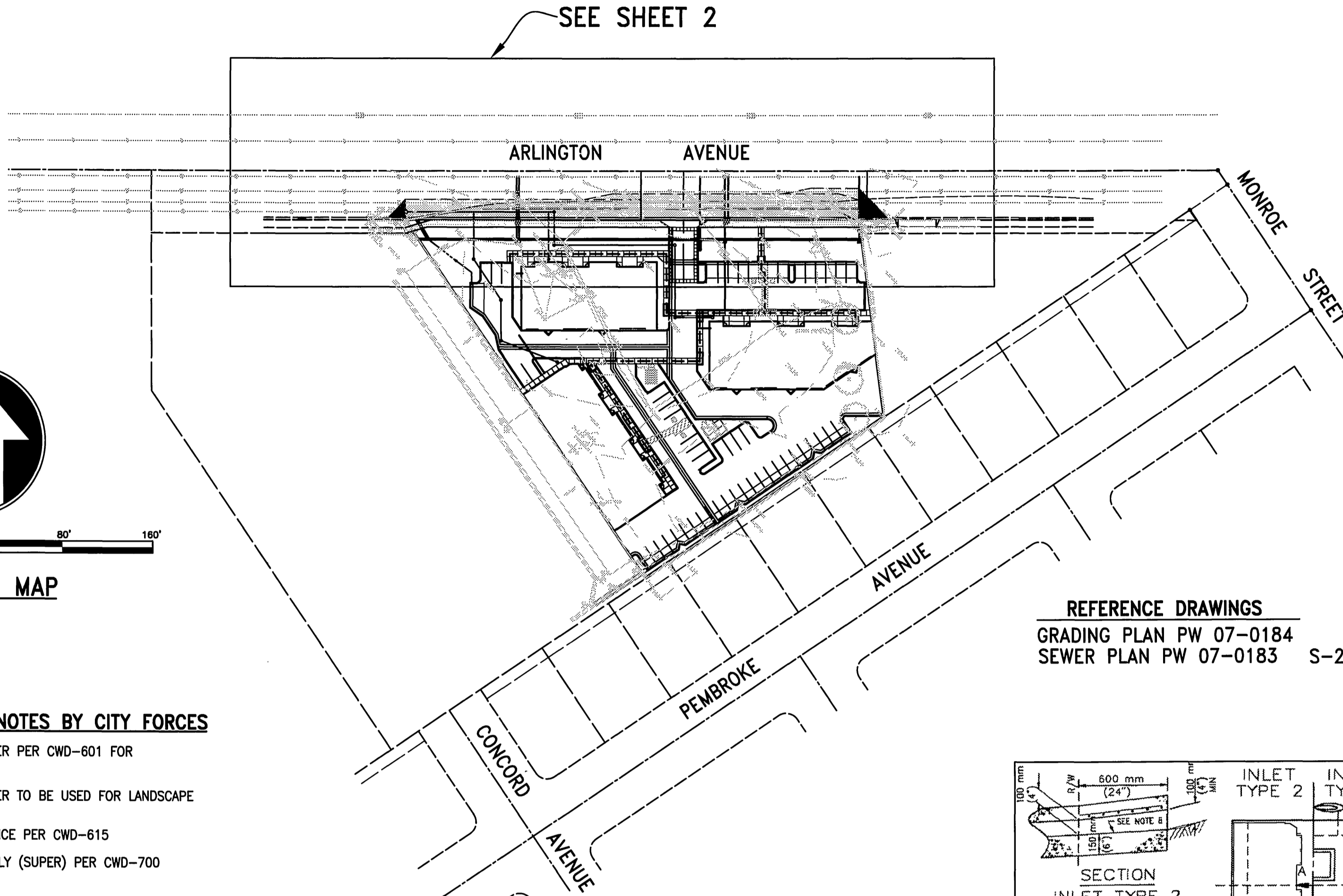
VINCINITY MAP
NOT TO SCALE
THOMAS GUIDE: RV. CO.
PAGE 714 GRID J-2
SECTION 6, T.3S., R.5W.

CONSTRUCTION NOTES

- ① CONSTRUCT 6" CURB AND GUTTER PER CITY OF RIVERSIDE STD. DWG. NO. 200 TYPE I. 402 LF
- ② CONSTRUCT " " A.C. PAVING OVER " " CRUSHED AGGREGATE BASE PER SOILS REPORT NO. " " R VALUE=" " 7,842 SF
- ③ CONSTRUCT P.C.C. CURB SIDEWALK PER CITY OF RIVERSIDE STD. DWG. NO. 325. 2211 SF
- ④ CONSTRUCT VARIABLE THICKNESS A.C. PAVING OVERLAY AND FEATHER. 850 SF
- ⑤ CONSTRUCT DRIVEWAY APPROACH PER CITY OF RIVERSIDE STD. NO. 302, A=25', B=39', TYPE CURB I. 1 EA.
- ⑥ CONSTRUCT PARKWAY DRAIN PER AMERICAN PUBLIC WORKS ASSOCIATION SOUTHERN CALIFORNIA CHARTER STD. 151-1, S=3.0', AS SHOWN ON SHT. 1 Q=5.8 C.F.S., V=6.4 F/S. 1 EA.
- ⑦ TRANSITION FROM 6" CURB FACE TO EXISTING 8" CURB FACE 5' PRIOR TO EXISTING 8" CURB AND GUTTER. 5 L.F.
- ⑧ INSTALL REDUCED PRESSURE BACKFLOW DEVICE PER CITY SPECIFICATIONS AND APPROVAL. 4 EA.
- ⑨ INSTALL REDUCED PRESSURE PRINCIPLE DETECTOR ASSEMBLY PER CWD-615. SEE ON-SITE FIRE SERVICE PLAN. 1 EA.



LOCATION MAP



REFERENCE DRAWINGS
GRADING PLAN PW 07-0184
SEWER PLAN PW 07-0183 S-2043

WATER CONSTRUCTION NOTES BY CITY FORCES

- ① INSTALL 1" SERVICE 3/4" METER PER CWD-601 FOR DOMESTIC WATER SERVICE
- ② EXISTING 1" SERVICE- 1" METER TO BE USED FOR LANDSCAPE
- ③ INSTALL 8" SERVICE FIRE SERVICE PER CWD-615
- ④ INSTALL FIRE HYDRANT ASSEMBLY (SUPER) PER CWD-700

ABBREVIATIONS

T.C.	TOP OF CURB
F.L.	FLOWLINE
C.L.	CENTERLINE
S.C.	SAWCUT LINE
B.C.	BEGIN CURVE
E.C.	END CURVE
PRC	POINT OF REVERSE CURVE
BCR	BEGIN CURB RETURN
ECR	END CURB RETURN
A.C.	ASPHALT CONCRETE
A.B.	AGGREGATE BASE
C.B.	CATCH BASIN
D/W	DRIVEWAY
S/W	SIDEWALK
R/W	RIGHT OF WAY
S.D.	STORM DRAIN
EX.	EXISTING
PROP.	PROPOSED
C&G	CURB AND GUTTER
TR. BDY.	TRACT BOUNDARY
[Hatched Box]	INDICATES REMOVE AND REPLACE EXISTING PAVING
[Solid Box]	INDICATES PROPOSED PAVING

ELECTRICAL DEPARTMENT NOTES

THE CONTRACTOR IS RESPONSIBLE FOR INSTALLATION OF STREET LIGHTS AND UNDERGROUND ELECTRIC UTILITY FACILITIES. CONTACT RIVERSIDE PUBLIC UTILITIES 90 DAYS IN ADVANCE OF CONSTRUCTION TO OBTAIN APPROVED STREET LIGHT AND ELECTRIC PLANS.

CONTACT: STEVE JOHAL
PH. NO. (951) 826-5830
3901 ORANGE STREET
RIVERSIDE, CA 92501

(UNDERGROUND FACILITY RELOCATIONS)
UNDERGROUND POWER FACILITIES SHALL BE RELOCATED BY THE DEVELOPER AND CITY OF RIVERSIDE AT DEVELOPER'S EXPENSE. CONTACT RIVERSIDE PUBLIC UTILITIES 90 DAYS IN ADVANCE OF CONSTRUCTION FOR APPROVED PLANS FOR RELOCATION OF UNDERGROUND POWER AND STREET LIGHT FACILITIES.

CONTACT: STEVE JOHAL
PH. NO. (951) 826-5830
3901 ORANGE STREET
RIVERSIDE, CA 92501

(OVERHEAD FACILITY RELOCATIONS)
OVERHEAD POWER FACILITIES SHALL BE RELOCATED BY CITY OF RIVERSIDE AT DEVELOPER'S EXPENSE. CONTACT RIVERSIDE PUBLIC UTILITIES 90 DAYS IN ADVANCE OF CONSTRUCTION FOR RELOCATION OF OVERHEAD POWER FACILITIES.

CONTACT: STEVE JOHAL
PH. NO. (951) 826-5830
3901 ORANGE STREET
RIVERSIDE, CA 92501



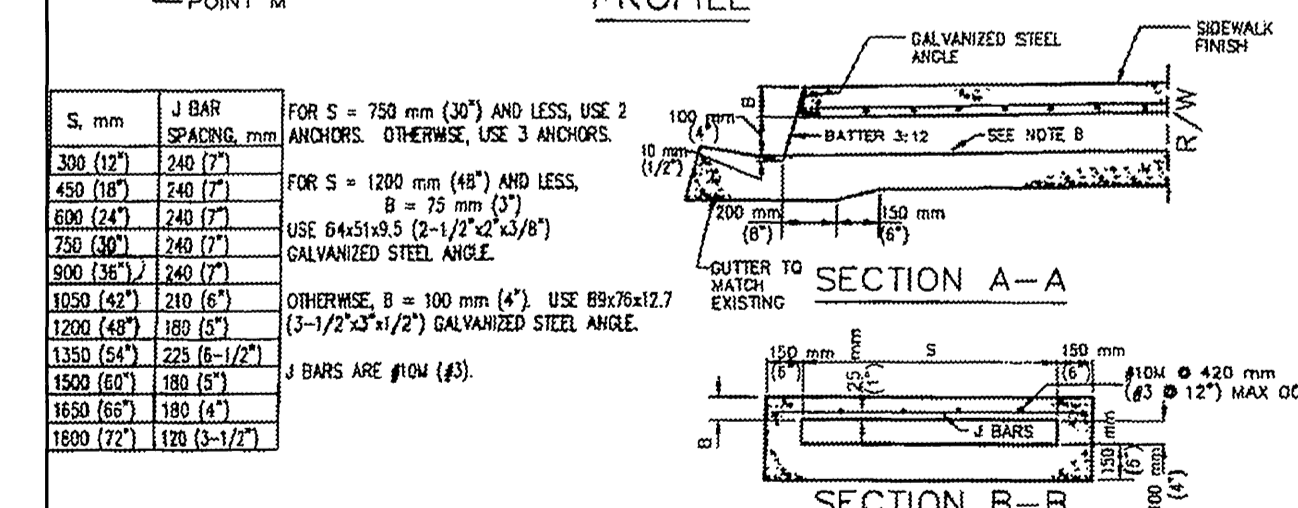
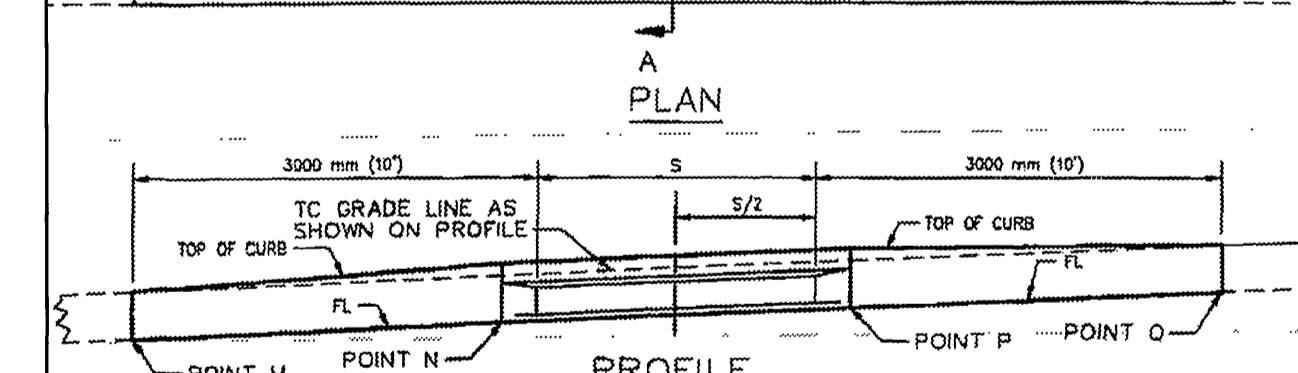
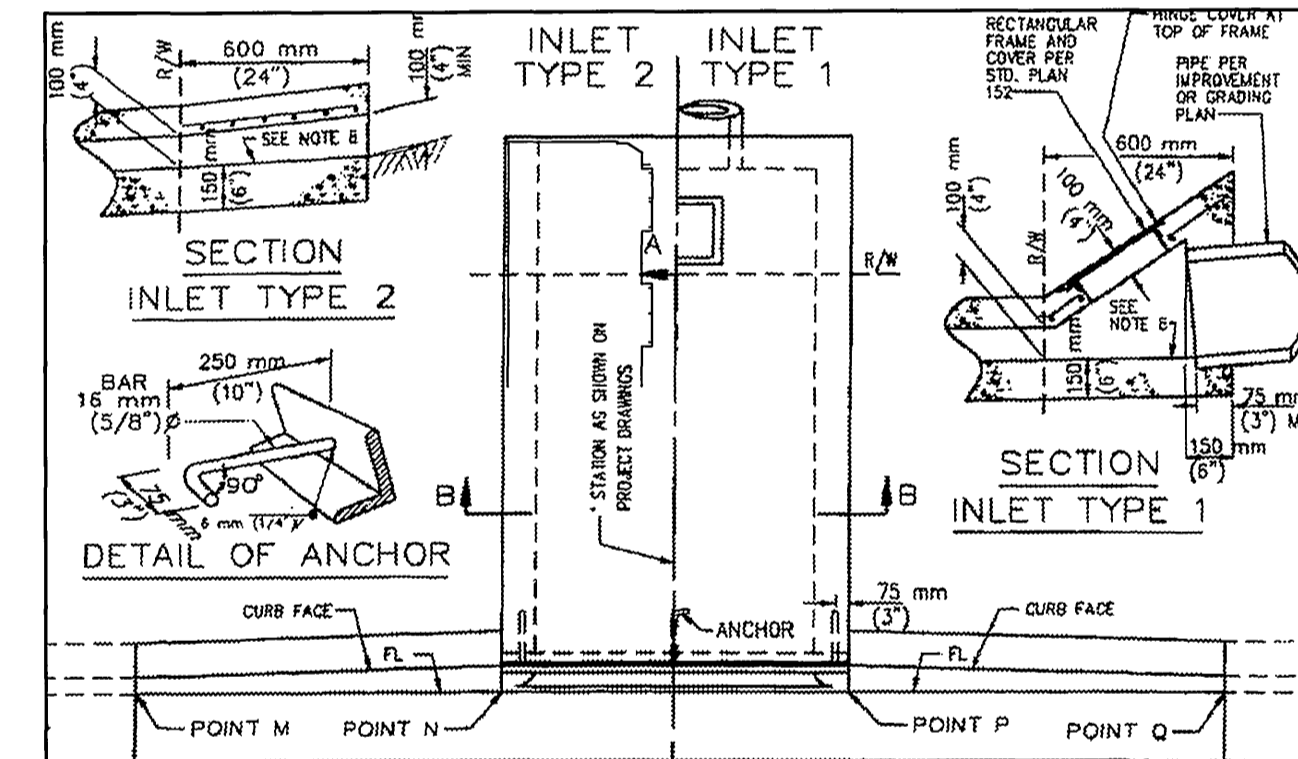
ARLINGTON AVENUE TYPICAL SECTION

STA. 17+19.49 TO STA. 19+50.00 (PAVING REMOVAL 25' RT.)
STA. 19+75.00 TO STA. 21+25.00 (PAVING REMOVAL 20' RT.)
STA. 21+50 TO 21+92.75 (PAVING REMOVAL 15' RT.)
N.T.S.

CONSTRUCT " " A.C. OVER " " BASE
PER S.R. T.I.=7 "R" VALUE=" "

BENCHMARK:

G3-F2 BRASS DISK AT THE INTERSECTION
OF ARLINGTON AVE. & VAN BUREN
BLVD.
ELEV.=736.332



S. mm	J BAR SPACING mm	FOR S = 750 mm (30") AND LESS, USE 2 ANCHORS. OTHERWISE, USE 3 ANCHORS.
330 (12')	240 (7')	
450 (18')	240 (7')	
600 (24')	240 (7')	
750 (30')	240 (7')	
900 (36')	240 (7')	
1050 (42')	210 (6')	OTHERWISE, B = 100 mm (4") USE B9/76x12.7 (3-1/2"x3-1/2") GALVANIZED STEEL ANGLE.
1200 (48')	180 (5')	
1350 (54')	225 (8-1/2')	
1500 (60')	180 (5')	
1650 (66')	180 (5')	
1800 (72')	120 (3-1/2')	

NOTES

1. FLOOR OF BOX SHALL BE TROWEL SMOOTH.
2. IF THE TOE OF SLOPE IS ALLOWED WITHIN THE R/W, INLET TYPE 1 BEGINS AT THE TOE RATHER THAN AT THE R/W LINE.
3. FOR OPEN DITCH (TYPE 2), THE 600 mm (24") EXTENSION BEYOND THE R/W LINE IS NOT REQUIRED WHEN BACK OF WALK IS 800 mm (24") OR MORE FROM THE R/W LINE; HOWEVER, THE PIPE SHALL EXTEND TO THE R/W LINE IN ANY EVENT.
4. TOP OF INLET STRUCTURE (TYPE 1 & 2) SHALL BE FLUSH WITH ADJACENT SURFACE WHERE PRACTICAL.
5. A HEADED STEEL STUD 16 mm x 160 mm WITH A 25 mm HEAD (5/8" x 6-3/8" 1" HEAD) ATTACHED BY A FULL PENETRATION BUTT WELD MAY BE USED AS AN ALTERNATE ANCHOR.
6. NORMAL CURB FACE AT POINT M AND Q. CURB FACE IS B + 125 mm (5") AT POINT N AND P.
7. THE 75 mm (3") LEG OF THE 16 mm (5/8") DIA ANCHORS SHALL BE PARALLEL TO THE TOP OF SIDEWALK.
8. SLOPE = 2.0%.
9. DIMENSIONS SHOWN ON THIS PLAN FOR METRIC AND ENGLISH UNITS ARE NOT EXACTLY EQUAL VALUES. IF METRIC UNITS ARE USED, ALL VALUES USED FOR CONSTRUCTION SHALL BE METRIC VALUES. IF ENGLISH UNITS ARE USED, ALL VALUES USED FOR CONSTRUCTION SHALL BE ENGLISH VALUES. HOWEVER, ASTM 615 REINFORCING-STEEL MAY BE SUBSTITUTED FOR ASTM 615M STEEL.

AMERICAN PUBLIC WORKS ASSOCIATION - SOUTHERN CALIFORNIA CHAPTER

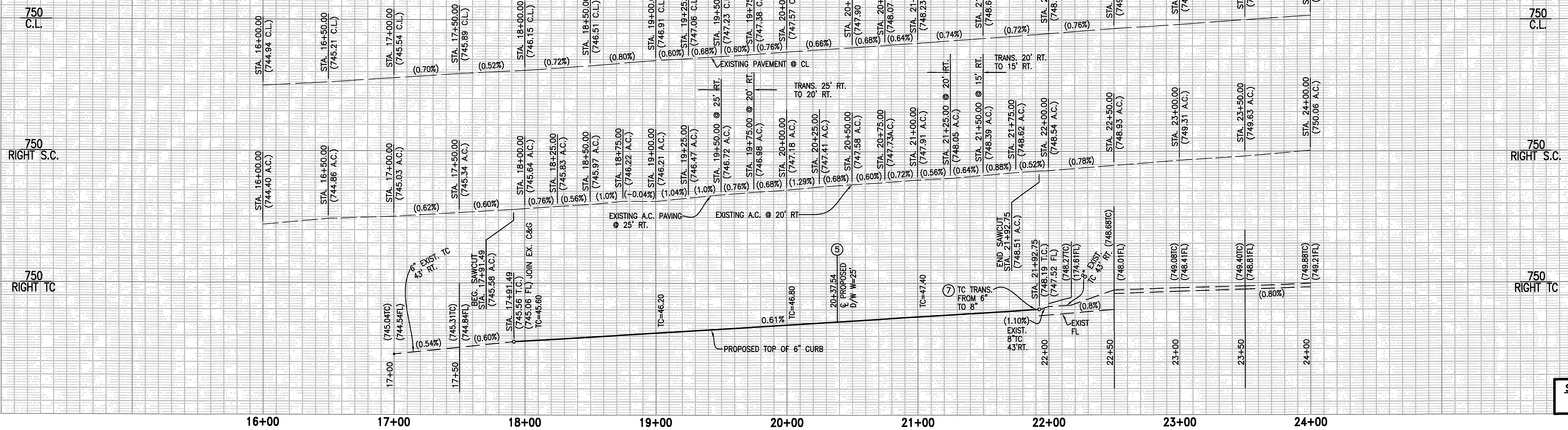
PARKWAY DRAIN

STANDARD PLAN METRIC 151-1 SHEET 1 OF 2

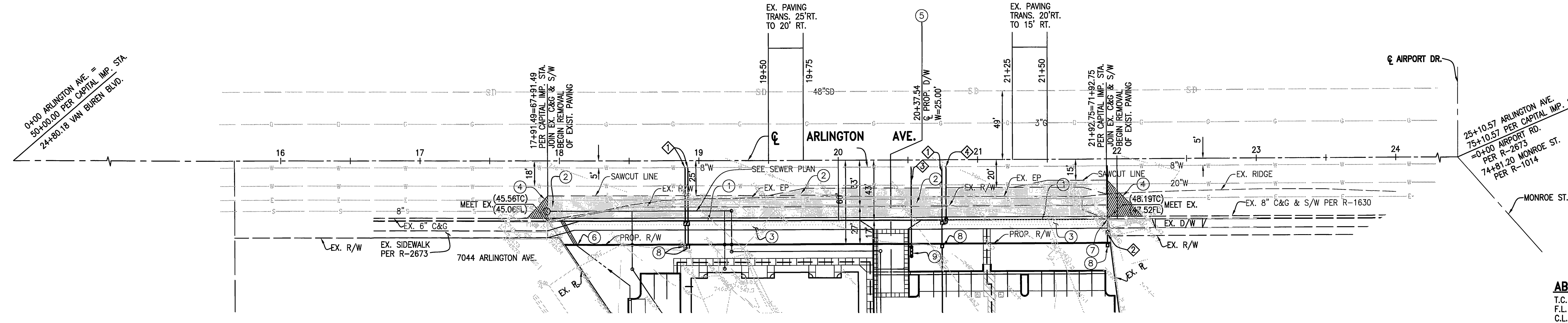
CITY BUSINESS TAX CERTIFICATE NO. 012144 EXP. DATE 12-31-08

INDEXED 3-21-08 lhl

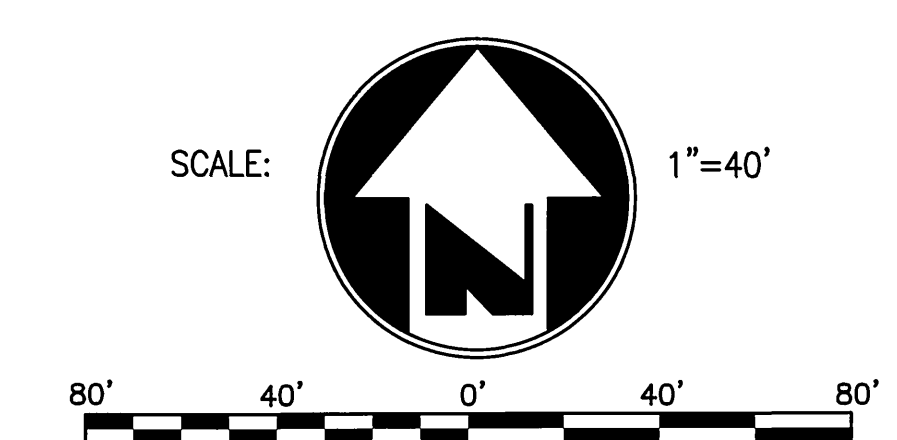
CITY OF RIVERSIDE PUBLIC UTILITIES DEPARTMENT-WATER APPROVED BY: <i>MW Muel</i> DATE: 2/1/08	CITY OF RIVERSIDE PUBLIC UTILITIES DEPARTMENT-ELECTRIC OVERHEAD & UNDERGROUND APPROVED BY: <i>[Signature]</i> DATE: 2/1/08	Underground Service Alert Call: TOLL FREE 1-800-227-2600 TWO WORKING DAYS BEFORE YOU DIG	CITY OF RIVERSIDE, CALIFORNIA PUBLIC WORKS DEPARTMENT APPROVED BY: <i>[Signature]</i> DATE: 3/20/08 PRINCIPAL ENGINEER: <i>[Signature]</i> CITY ENGINEER: <i>[Signature]</i> DATE: 3/20/08	GABEL, COOK & ASSOCIATES INC. LAND SURVEYORS 125 West La Cadena Drive, Suite A, Riverside, CA 92501 Telephone (951) 788-8092 Facsimile (951) 788-5184 CRAIG A. COOK RCE 23323 EXP 12/31/09 DATE: 3/20/08	CITY OF RIVERSIDE STREET IMPROVEMENTS PLAN AND PROFILE 7000, 7010 & 7030 ARLINGTON AVENUE SHEET 1 OF 2 FILE NO.



STREET PROFILE SCALE:
 VERT.: 1" = 4'
 HORIZ.: 1" = 40'



ARLINGTON AVENUE STA. 17+91.49 TO 21+92.75



- CONSTRUCTION NOTES**
- ① CONSTRUCT 6" CURB AND GUTTER PER CITY OF RIVERSIDE STD. DWG. NO. 200 TYPE I. 402 LF
 - ② CONSTRUCT 4" A.C. PAVING OVER 4" CRUSHED AGGREGATE BASE PER SOILS REPORT NO. _____, R VALUE=_____. 7,842 SF
 - ③ CONSTRUCT P.C.C. CURB SIDEWALK PER CITY OF RIVERSIDE STD. DWG. NO. 325. 2211 SF
 - ④ CONSTRUCT VARIABLE THICKNESS A.C. PAVING OVERLAY AND FEATHER. 850 SF
 - ⑤ CONSTRUCT DRIVEWAY APPROACH PER CITY OF RIVERSIDE STD. NO. 302, A=25', B=39', TYPE CURB I. 1 EA.
 - ⑥ CONSTRUCT PARKWAY DRAIN PER AMERICAN PUBLIC WORKS ASSOCIATION SOUTHERN CALIFORNIA CHARTER STD. 151-1, S=3.0', AS SHOWN ON SHT. 1 Q=5.8 C.F.S., V=6.4 F/S. 1 EA.
 - ⑦ TRANSITION FROM 6" CURB FACE TO EXISTING 8" CURB FACE 5' PRIOR TO EXISTING 8" CURB AND GUTTER. 5 L.F.
 - ⑧ INSTALL REDUCED PRESSURE BACKFLOW DEVICE PER CITY SPECIFICATIONS AND APPROVAL. 4 EA.
 - ⑨ INSTALL REDUCED PRESSURE PRINCIPLE DETECTOR ASSEMBLY PER CWD-615. SEE ON-SITE FIRE SERVICE PLAN. 1 EA.

- WATER CONSTRUCTION NOTES BY CITY FORCES**
- ① INSTALL 1" SERVICE 3/4" METER PER CWD-60# FOR DOMESTIC WATER SERVICE
 - ② EXISTING 1" SERVICE- 1" METER TO BE USED FOR LANDSCAPE
 - ③ INSTALL 8" SERVICE FIRE SERVICE PER CWD-615
 - ④ INSTALL FIRE HYDRANT ASSEMBLY (SUPER) PER CWD-700

BENCHMARK: SEE SHT. 1

ABBREVIATIONS

T.C.	TOP OF CURB
F.L.	FLOWLINE
C.L.	CENTERLINE
S.C.	SAWCUT LINE
BC	BEGIN CURVE
EC	END CURVE
PRC	POINT OF REVERSE CURVE
BCR	BEGIN CURB RETURN
ECR	END CURB RETURN
A.C.	ASPHALT CONCRETE
A.B.	AGGREGATE BASE
C.B.	CATCH BASIN
D/W	DRIVEWAY
S/W	SIDEWALK
R/W	RIGHT OF WAY
S.D.	STORM DRAIN
EX.	EXISTING
PROP.	PROPOSED
C&G	CURB AND GUTTER
TR. BDR.	TRACT BOUNDARY
	INDICATES REMOVE AND REPLACE EXISTING PAVING
	INDICATES PROPOSED PAVING



CITY BUSINESS TAX CERTIFICATE NO. 012144 EXP. DATE 12-31-08

INDEXED 3-24-08 Lfh

CITY OF RIVERSIDE
 PUBLIC UTILITIES DEPARTMENT-WATER

MW McLeod
 APPROVED BY
 2/4/08
 DATE

CITY OF RIVERSIDE
 PUBLIC UTILITIES DEPARTMENT-ELECTRIC
 OVERHEAD & UNDERGROUND

EMM
 APPROVED BY
 2/11/08
 DATE

Underground Service Alert

Call: TOLL FREE
 1-800
 227-2600

TWO WORKING DAYS BEFORE YOU DIG

CITY OF RIVERSIDE, CALIFORNIA
 PUBLIC WORKS DEPARTMENT

APPROVED BY: [Signature]
 PRINCIPAL ENGINEER

APPROVED BY: [Signature]
 CITY ENGINEER

DATE: 2/10/08

CITY OF RIVERSIDE, CALIFORNIA
 PUBLIC WORKS DEPARTMENT

APPROVED BY: [Signature]
 PRINCIPAL ENGINEER

APPROVED BY: [Signature]
 CITY ENGINEER

DATE: 2/10/08

GABEL, COOK & ASSOCIATES INC.

CIVIL ENGINEERS LAND SURVEYORS
 LAND PLANNERS

125 West La Cadenita Drive, Suite A, Riverside, CA 92501
 Telephone (951) 788-8092 Facsimile (951) 788-5184

CRAIG A. COOK RCE 23323 EXP 12/31/09 DATE: 2/10/08

DATE PREPARED: JANUARY 07 W.O. NO.: 2336

CITY OF RIVERSIDE
 STREET IMPROVEMENTS
 PLAN AND PROFILE
 7000 ARLINGTON AVENUE

SCALE: AS-NOTED

PW07-0182
 R-4061
 SHEET 2 OF 2
 FILE NO.