
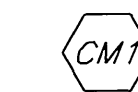
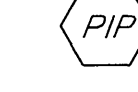
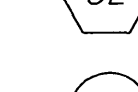
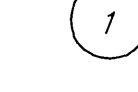



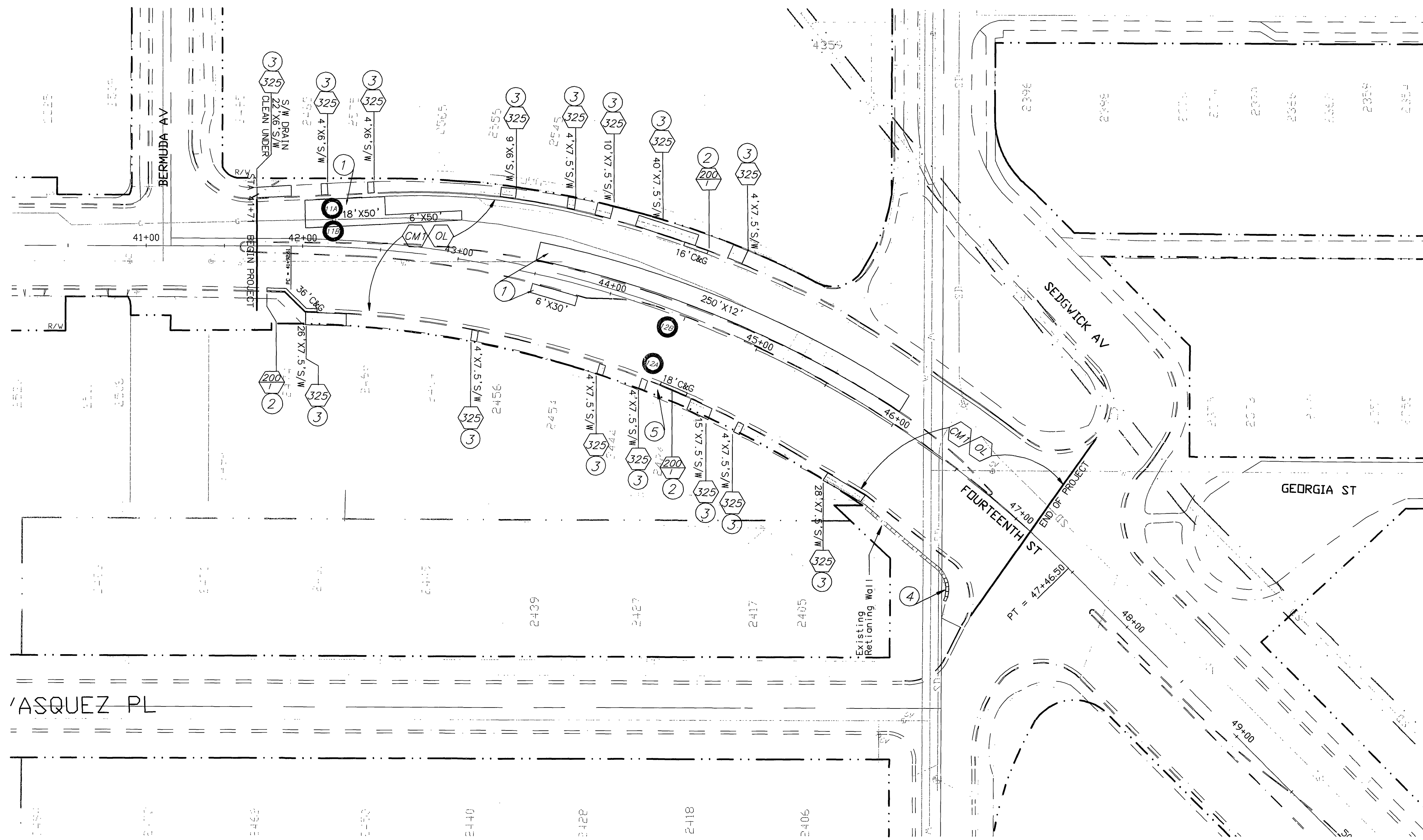


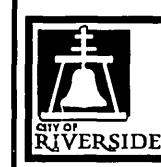
CONSTRUCTION NOTES:

-  NUMBERS ABOVE 100 IN A HEXAGON ON THE PLAN REFER TO THE RESPECTIVE STANDARD DRAWING AND SHALL BE CONSTRUCTED ACCORDINGLY, UNLESS MODIFICATIONS ARE NOTED ON THE PLAN OR COVER SHEET. ANY NUMBER SHOWN BELOW THE STANDARD DRAWING NUMBER INDICATES THE SPECIFIC ALTERNATE TO BE CONSTRUCTED.
-  COLD MILL EXISTING A.C. PAVEMENT TO A MINIMUM UNIFORM DEPTH OF 2" AS SHOWN ON THE PLAN AND AS DIRECTED BY THE ENGINEER
-  PROTECT IN PLACE, DESCRIPTION PER PLAN.
-  OVERLAY THE ENTIRE PAVEMENT WIDTH WITH VARIABLE THICKNESS A.R.H.M.-GG (MINIMUM DEPTH=2")
-  BASED ON THE AS-BUILT PLANS AND ASPHALT CORING INFORMATION FOR FOURTEENTH STREET BETWEEN BERMUDA AVE AND SEDGWICK AVE, IT HAS BEEN ASSUMED THAT THE EXISTING ASPHALT PAVEMENT STRUCTURAL SECTIONS GENERALLY INCLUDE THE FOLLOWING: 5" TO 7" AC OVER 8" TO 15" DECOMPOSED GRANITE AND 6" AC OVER 3" AGGREGATE BASE. THE AREAS OF DETERIORATED PAVEMENT MARKED FOR REMOVAL (GREY SHADED AREAS) AND CORRESPONDING BID QUANTITIES ARE APPROXIMATE. THE ACTUAL AREAS FOR REMOVAL & RECONSTRUCTION OF DETERIORATED PAVEMENT WILL BE MARKED IN THE FIELD BY THE INSPECTOR AFTER THE 2"-UNIFORM COLD-MILLING OPERATION IS COMPLETED. THE EXISTING PAVEMENT AND SUFFICIENT DEPTH OF EXISTING AGGREGATE BASE/SUBGRADE SHALL BE REMOVED TO BRING THE FINAL GRADE TO A DEPTH OF 7" BELOW SURFACE AFTER COLD-MILLING. REPLACE THE REMOVED AC AREAS WITH 7" OF FULL DEPTH DGAC IN LIFTS NOT TO EXCEED 4" IN THICKNESS. THE ENTIRE ROAD WILL BE CAPPED WITH 2" ARHM OVERLAY.
-  REMOVE AND REPLACE EXISTING CURB & GUTTER PER STD. DRAWING 200 AS SHOWN ON THE PLAN AND AS DIRECTED BY THE ENGINEER. (CONTRACTOR SHALL NOTIFY THE ENGINEER TO DETERMINE THE PROPER LONGITUDINAL GRADE AND THE NEED FOR STAKING OF CURB AND GUTTER THAT EXCEED 50 FEET IN LENGTH PRIOR TO THE REMOVAL OF THESE AREAS.)
-  REMOVE AND REPLACE EXISTING SIDEWALK PER STD. DRAWING 325
-  CONSTRUCT RETAINING WALL PER CITY STANDARD DRAWING NO. 707 (H=3', SPLIT FACE BLOCKS TO MATCH EXISTING WALL)



ASQUEZ PL

Underground Service Alert
 Call: TOLL FREE
 1-800-227-2600
 TWO WORKING DAYS BEFORE YOU DIG



ENGINEER IN RESPONSIBLE CHARGE
 Ibrahim A. Massoud
 R.C.E. No. 64224 expires 6/30/11
 DATE 1/6/2010



MARK	REVISIONS	APPR.	DATE

DESIGNED BY: *ME* DRAWN BY: *ME* CHECKED BY: *IM*

APPROVED BY	BY	DATE
ENGINEER MANAGER	PH	1/13/10
CONSTRUCTION ADMIN.	KS	1/7/10
SURVEYOR		
SHEET SERVICES		1-14-10
TRAFFIC ENGINEER		1-6-10
PARK & REC. DEP.		

CITY OF RIVERSIDE, CALIFORNIA
 PUBLIC WORKS DEPARTMENT
 APPROVED BY: *[Signature]*
 CITY ENGINEER
 DATE: 1/18/10

FOURTEENTH STREET IMPROVEMENTS
 BERMUDA AVE TO SEDGWICK AVE
 HORIZ. SCALE: 1"=40'

ACCT. NO. 9589330-440302
 W.O. NO. 0915625
R-4149
 SHEET 2 OF 2
 FILE NO.