

TYPICAL SECTION
 From Sta. 0144.56 to 1175.92
 No Scale

QUANTITY ESTIMATE

Std. 200 Curb & Gutter	360 lin. ft.
Std. 220 Cross Gutter	500 sq. ft.
2 1/2" R.M.S. w/ seal coat	4,957 sq. ft.
6" Imported Base Material	52 cu. yds.
Std 325 Sidewalk	1,755 sq. ft.

CURB RETURN DATA

No.	A	R	T	L
(1)	89°26'	27	25.75	42.14

Bench Mark - Chiselled 9 on top of Curb approx. center of N.E. curb return Inter. Elizabeth & Elizabeth. Elev. 235.1234/56

GENERAL NOTES

- 1- If the subdivider desires to reduce requirements or imported base material, additional soil tests may be taken at the subdividers expense after streets are prepared to rough grade. Subdivider will contact the Inspection Division, City of Riverside, before making tests. The City of Riverside will make a test of base material in place. Before paving can be installed results of this test must indicate that the base material is satisfactory to the City of Riverside.
- 2- Construction to be in accordance with Standards & Specifications No. 460 of the City of Riverside, Dept. of Public Works.

Approved: *Edw. P. ...* Date 9-28-60
 PARK & RECREATION DEPT.

ALBERT A. WEBB ASSOCIATES
 CIVIL ENGINEERS RIVERSIDE, CALIFORNIA
 APPROVED: *...* DATE 9/28/60

REVISION		DESCRIPTION
MARK	DATE	

CITY OF RIVERSIDE, CALIFORNIA
DEPARTMENT OF PUBLIC WORKS

STREET PLAN & PROFILE
ELIZABETH STREET
MAGNOLIA CENTER TRACT

DATE	Sept. 13, 1960	SCALE	Vert. 1"=50'	APPROVED BY	<i>...</i>
DRAWN	REC	W.A.	60492	DIVISION	PUBLIC WORKS
CHECKED	RBC	P.E.	350/55	DATE	10-5-60

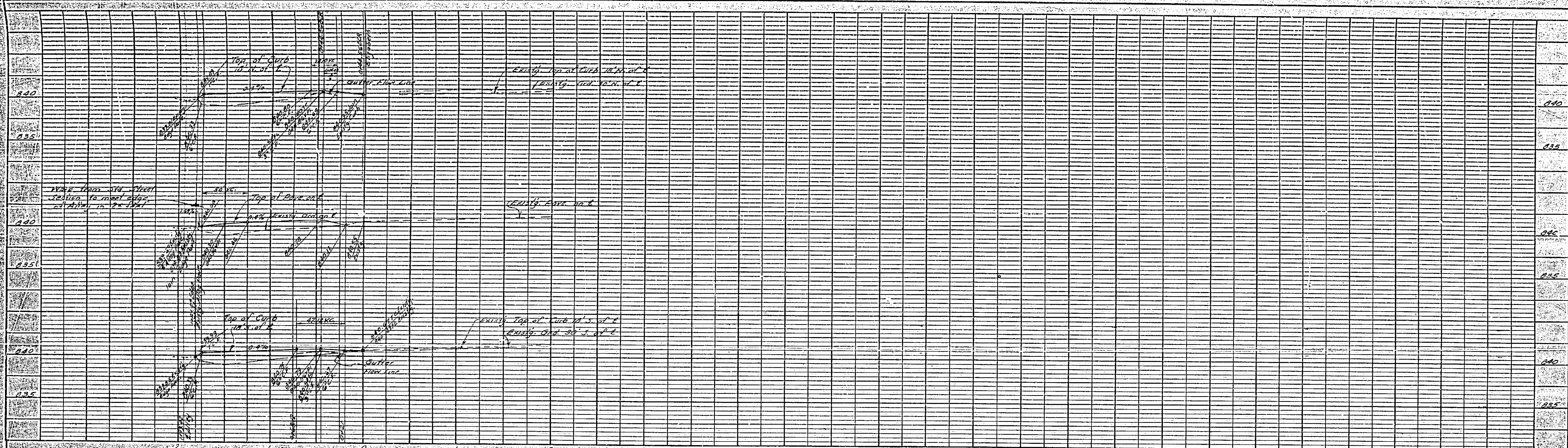
NO. **R-415**
 SHEET 1 OF 1

PROFILE

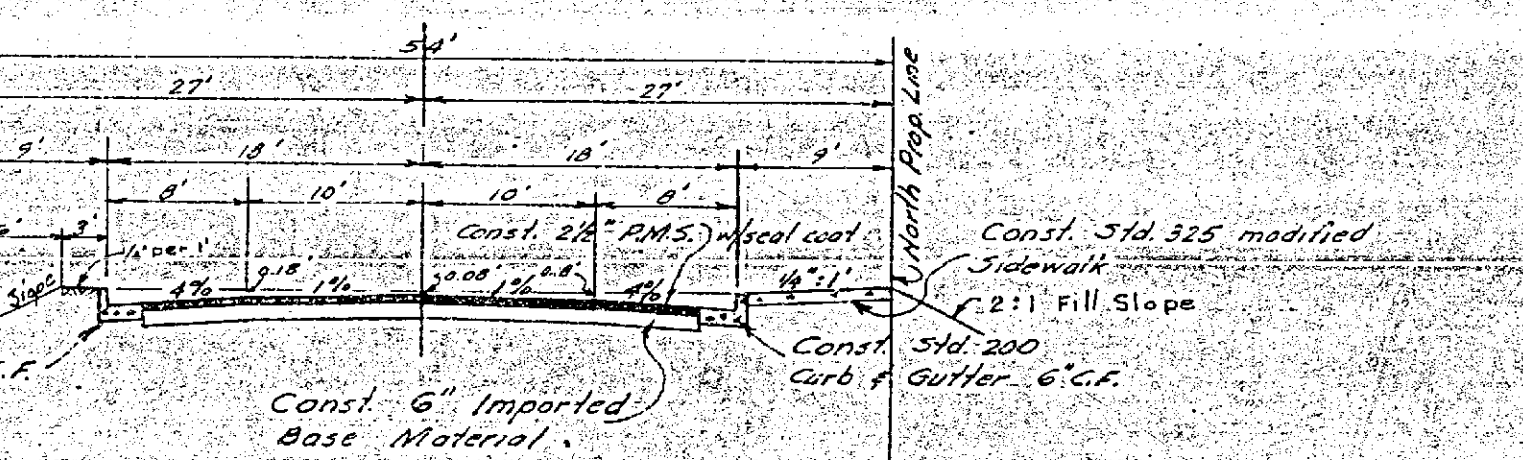
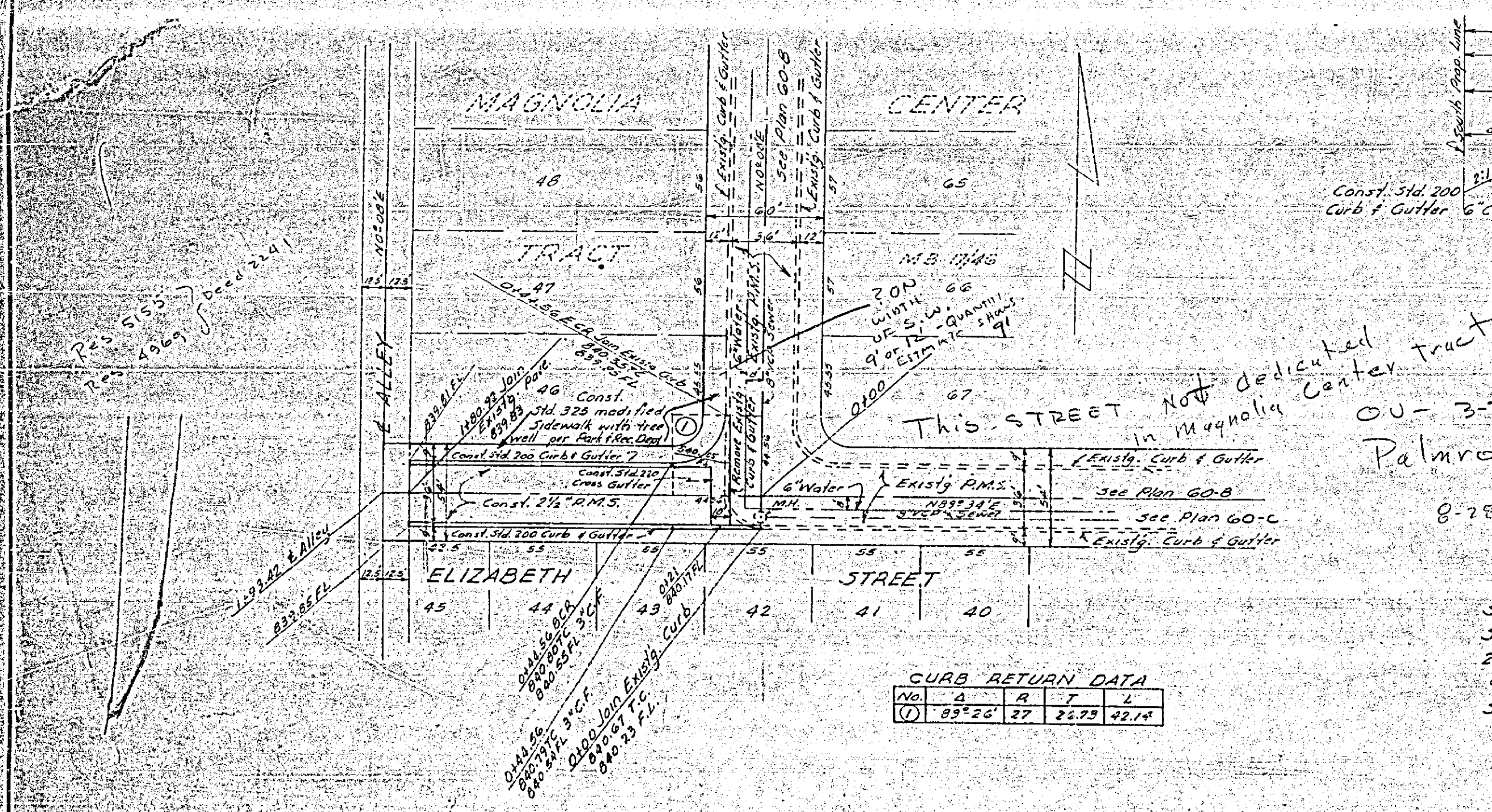
DATE	
BY	
CHECKED	
APPROVED	

PLAN

DATE	
BY	
CHECKED	
APPROVED	



Bench Mark - Installed on top of curb approx. center of N.E. curb return inter. Elizabeth & Elizabeth. Elev. 840.25 12.29.56



TYPICAL SECTION
 from Sta. 0144.55 to 1275.92
 No Scale

GENERAL NOTES

- 1- If the subdivider desires to reduce requirements on imported base material, additional soil tests may be taken at the subdividers expense after streets are prepared to rough grade. Subdivider will contact the Inspection Division, City of Riverside, before making tests. - The City of Riverside will make a test of base material in place. Before paving can be installed results of this test must indicate that the base material is satisfactory to the City of Riverside.
- 2- Construction to be in accordance with Standards & Specifications No. 460 of the City of Riverside, Dept. of Public Works.

CURB RETURN DATA

No.	A	R	T	L
(1)	83'26"	27'	26'23"	22'14"

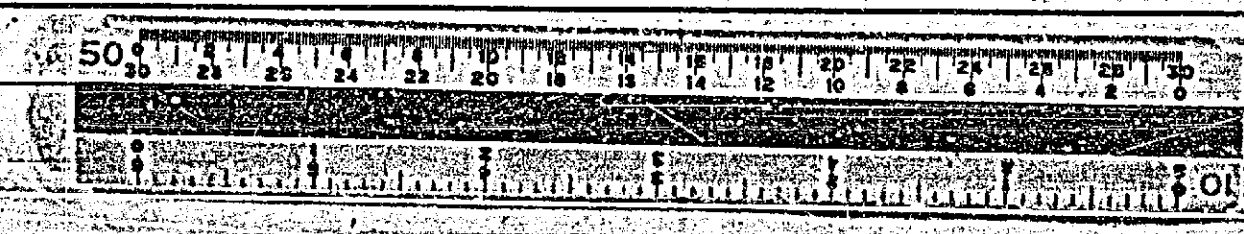
QUANTITY ESTIMATE

Std. 200 Curb & Gutter	360 lin. ft.
Std. 220 Cross Gutter	500 sq. ft.
2 1/2" R.M.S. w/ seal coat	4,957 sq. ft.
6" Imported Base Material	92 cu. yds.
Std. 325 Sidewalk	1,755 sq. ft.

REVISION		
MARK	DATE	DESCRIPTION

Approved *Albert A. Webb* Date 9-28-60
 CIVIL ENGINEERS - RIVERSIDE, CALIFORNIA
 DEPARTMENT OF PUBLIC WORKS
 CITY OF RIVERSIDE, CALIFORNIA
 STREET PLAN & PROFILE
 ELIZABETH STREET
 MAGNOLIA CENTER TRACT

DATE Sept. 13, 1960 SCALE Horiz. 1"=50'
 DRAWN REC W.O. Vert. 1"=5'
 CHECKED REC F.S. 500/95
 APPROVED BY *Albert A. Webb* DATE 10-5-60
 DIRECTOR OF PUBLIC WORKS
 NO. R-415 SHEET 1 OF 1



PROFILE
 SHEET NO. R-415
 PROJECT NO. 60-192A
 DRAWING NO. 107

PLAN
 SHEET NO. R-415
 PROJECT NO. 60-192A
 DRAWING NO. 107

FILE

Orig. No. 60-192A