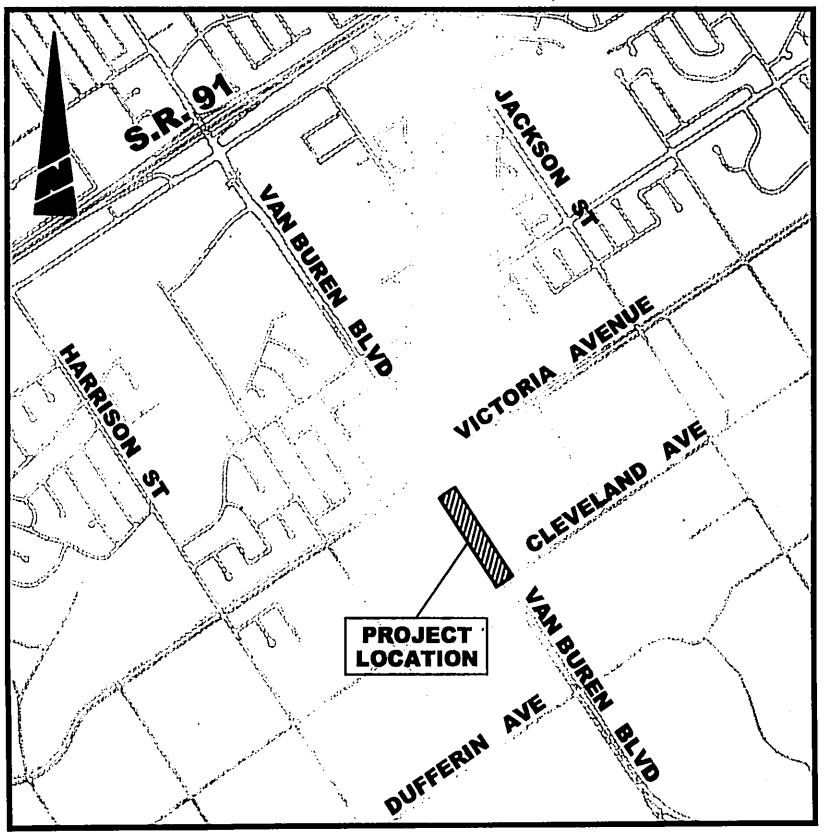
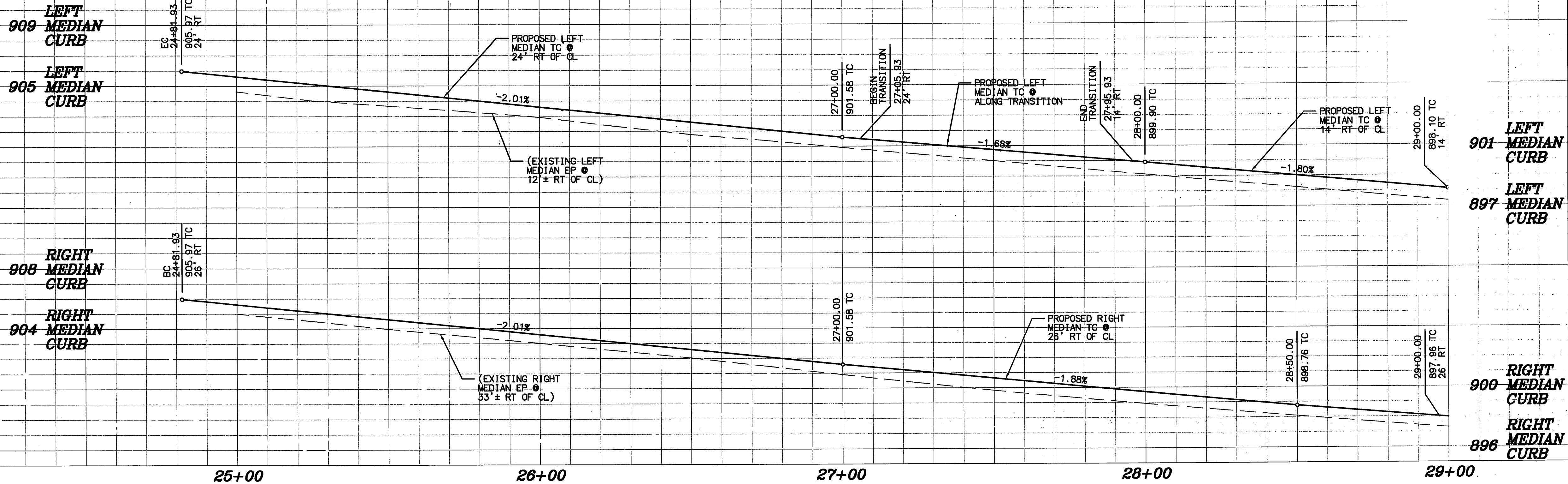


HORZ. SCALE: 1" = 20'
VERT. SCALE: 1" = 4'



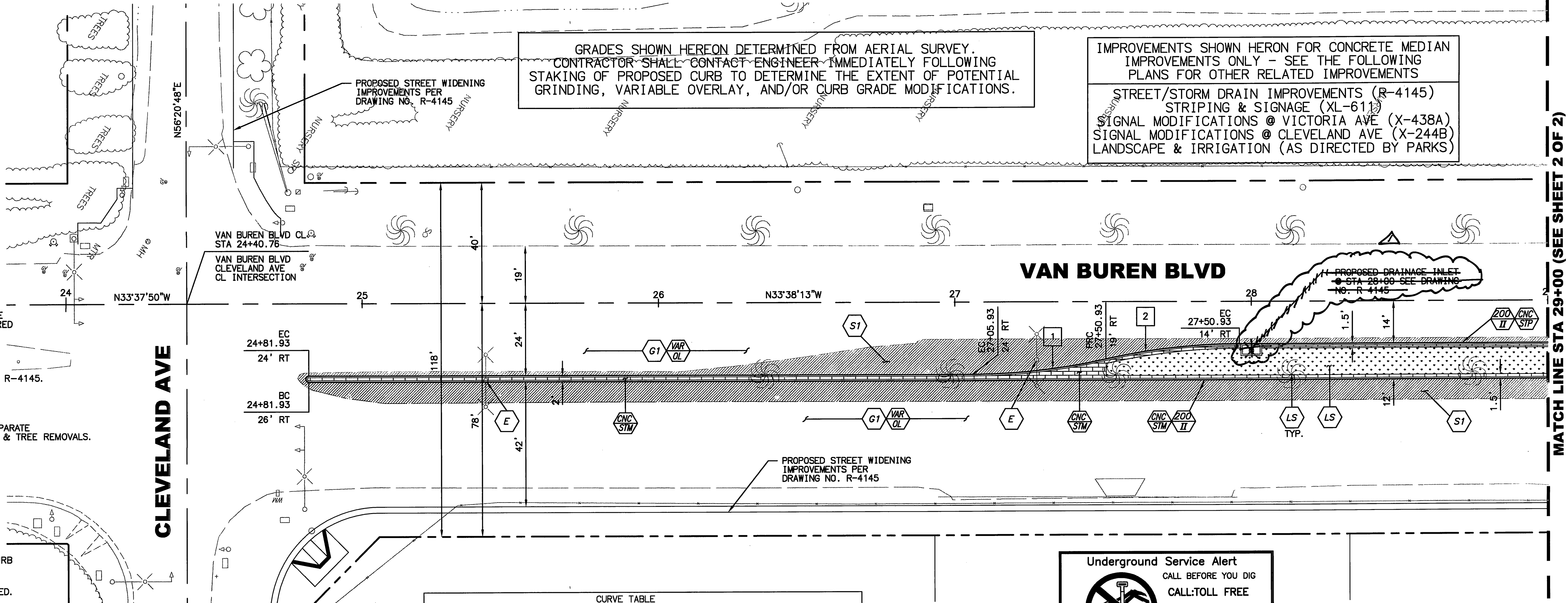
LOCATION MAP
NTS

- LEGEND**
- CONSTRUCT STAMPED CONCRETE PAVEMENT. PATTERN SHALL BE "NEW BRICK-RUNNING BOND" AND COLOR SHALL BE "QUARRY RED (C-32)" PER L.M. SCOFIELD, OR CITY APPROVED EQUAL.
 - CONSTRUCT CONCRETE CURB PER CITY STANDARD 200, TYPE II.
 - CONSTRUCT NEW STREET PAVEMENT PER DRAWING DRAWING NO. R-4145.
 - CONSTRUCT VARIABLE AC OVERLAY (0.1" MIN) AS DIRECTED BY THE ENGINEER AFTER FORMING OF PROPOSED CURB.
 - CONSTRUCT LANDSCAPE AND IRRIGATION IMPROVEMENTS PER SEPARATE CONSTRUCTION DRAWINGS, INCLUDING ALL NECESSARY SERVICES & TREE REMOVALS.
 - COORDINATE WITH PUBLIC UTILITIES TO RELOCATE ALL CONFLICTING ELECTRICAL FACILITIES.
 - GRIND EXISTING PAVEMENT (0.1" MIN, 0.2 MAX) AS DIRECTED BY THE ENGINEER AFTER FORMING OF PROPOSED CURB.
 - CONSTRUCTION CURVE DATA PER TABLE PROVIDED.
 - NEW STREET PAVEMENT BETWEEN EXISTING EDGE OF PAVEMENT AND NEW CONCRETE MEDIAN CURB.
 - NEW LANDSCAPE AND IRRIGATION AREA WITHIN NEW MEDIAN CURB PER SEPARATE CONSTRUCTION DRAWINGS.
 - NEW STAMPED CONCRETE WITHIN PROPOSED MEDIAN AS SPECIFIED.

BC: BEGIN CURVE
EC: END CURVE
PRC: POINT OF REVERSE CURVE
TYP: TYPICAL
N33°38'13"W: EXISTING CENTERLINE BEARING

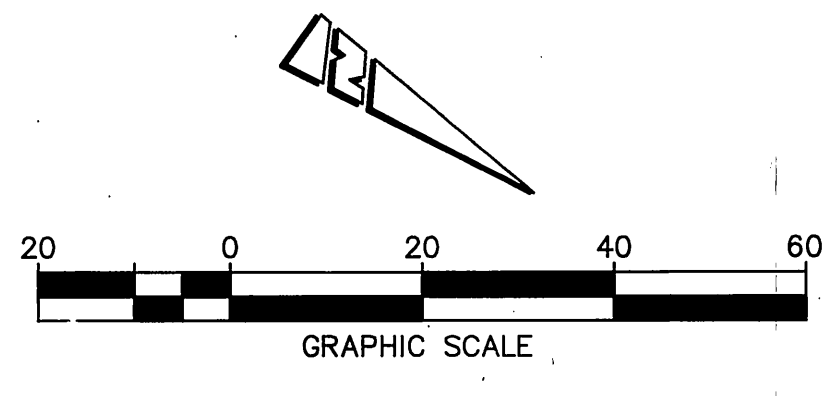
GRADES SHOWN HEREON DETERMINED FROM AERIAL SURVEY.
CONTRACTOR SHALL CONTACT ENGINEER IMMEDIATELY FOLLOWING STAKING OF PROPOSED CURB TO DETERMINE THE EXTENT OF POTENTIAL GRINDING, VARIABLE OVERLAY, AND/OR CURB GRADE MODIFICATIONS.

IMPROVEMENTS SHOWN HEREON FOR CONCRETE MEDIAN IMPROVEMENTS ONLY - SEE THE FOLLOWING PLANS FOR OTHER RELATED IMPROVEMENTS
STREET/STORM DRAIN IMPROVEMENTS (R-4145)
STRIPING & SIGNAGE (XL-611)
SIGNAL MODIFICATIONS @ VICTORIA AVE (X-438A)
SIGNAL MODIFICATIONS @ CLEVELAND AVE (X-244B)
LANDSCAPE & IRRIGATION (AS DIRECTED BY PARKS)



CURVE TABLE					
CURVE	TANGENT	LENGTH	RADIUS	DELTA	DESCRIPTION
1	22.78'	45.37'	205.00'	12°40'49"	LEFT MEDIAN CURB
2	22.78'	45.37'	205.00'	12°40'49"	RIGHT MEDIAN CURB

Underground Service Alert
CALL BEFORE YOU DIG
CALL-TOLL FREE
1-800-227-2600
TWO WORKING DAYS BEFORE YOU DIG



BENCHMARK EB-4-B2
BRASS DISK STAMPED "EB-4" IN CAPPED WELL AT THE INTERSECTION OF VICTORIA AVENUE AND VAN BUREN BOULEVARD.
ELEVATION: 884.412

ENGINEER IN RESPONSIBLE CHARGE
Edward Lara
EDWARD LARA
R.C.E. No. 63753 expires 9/30/10
DATE June 17, 2010



APPROVED BY	BY	DATE
PRINCIPAL ENGINEER		
CONSTRUCTION ADMIN.		
SURVEYOR	CS	6/17/10
TRAFFIC ENGINEER	SW	6/17/10

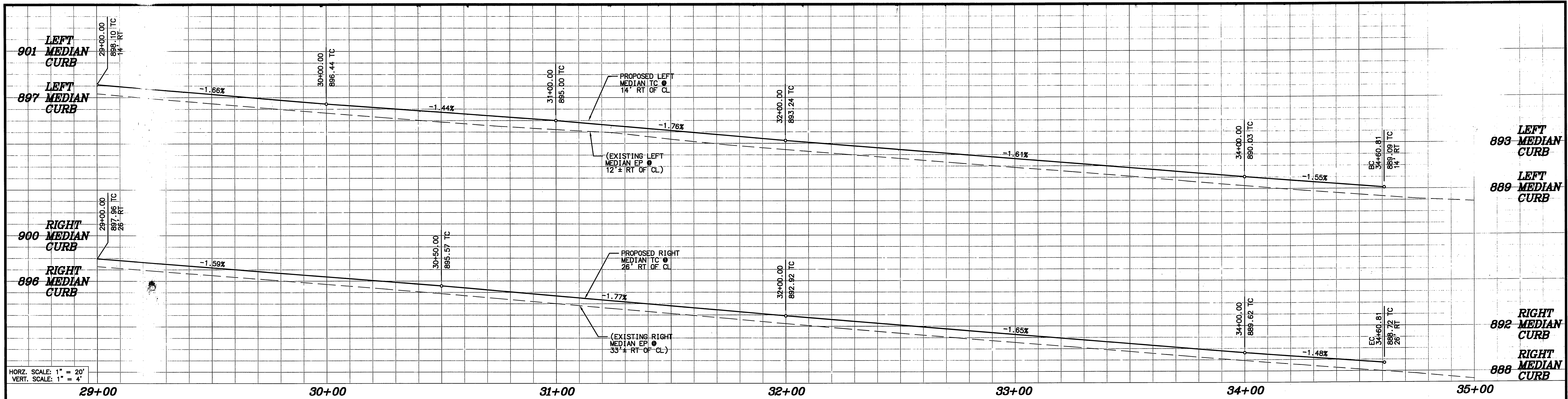
DESIGNED BY _____ DRAWN BY _____ CHECKED BY _____

CITY OF RIVERSIDE, CALIFORNIA
PUBLIC WORKS DEPARTMENT
APPROVED BY: *[Signature]*
CITY ENGINEER
DATE: 6/17/10

VAN BUREN BOULEVARD
MEDIAN IMPROVEMENTS
(CLEVELAND AVE TO VICTORIA AVE)
VAN BUREN BOULEVARD
CLEVELAND AVE TO STA 29+00
HORIZ. SCALE: 1"=20' VERT. SCALE: 1"=4'

DESIGN WORK ORDER NO. 1013790
R-4170
SHEET 1 OF 2
FILE NO.

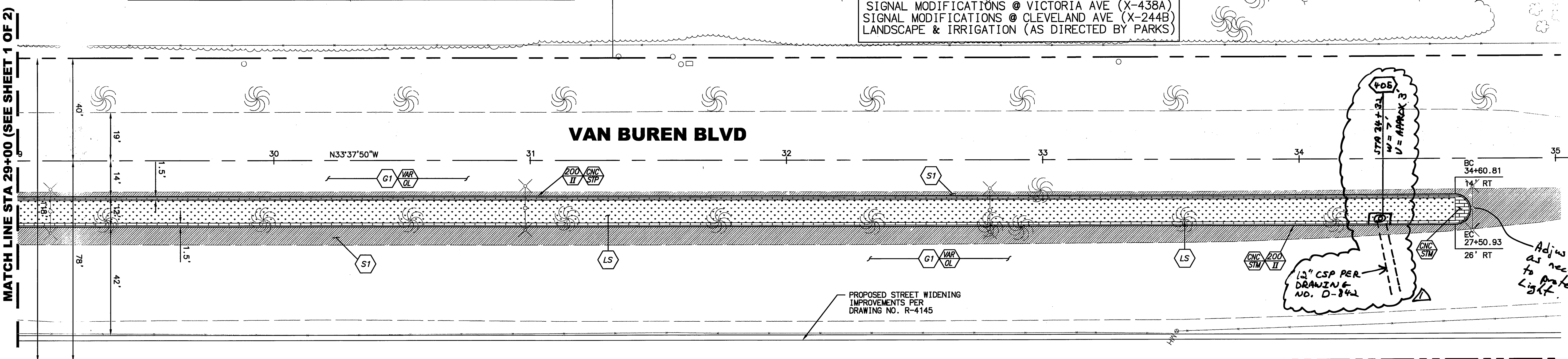
MATCH LINE STA 29+00 (SEE SHEET 2 OF 2)



HORZ. SCALE: 1" = 20'
 VERT. SCALE: 1" = 4'

GRADES SHOWN HEREON DETERMINED FROM AERIAL SURVEY. CONTRACTOR SHALL CONTACT ENGINEER IMMEDIATELY FOLLOWING STAKING OF PROPOSED CURB TO DETERMINE THE EXTENT OF POTENTIAL GRINDING, VARIABLE OVERLAY, AND/OR CURB GRADE MODIFICATIONS.

IMPROVEMENTS SHOWN HEREON FOR CONCRETE MEDIAN IMPROVEMENTS ONLY - SEE THE FOLLOWING PLANS FOR OTHER RELATED IMPROVEMENTS
 STREET/STORM DRAIN IMPROVEMENTS (R-4145)
 STRIPING & SIGNAGE (XL-611)
 SIGNAL MODIFICATIONS @ VICTORIA AVE (X-438A)
 SIGNAL MODIFICATIONS @ CLEVELAND AVE (X-244B)
 LANDSCAPE & IRRIGATION (AS DIRECTED BY PARKS)



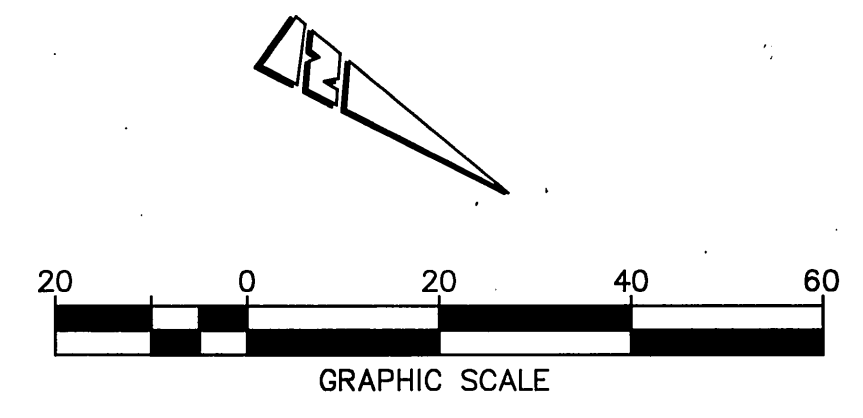
MATCH LINE STA 29+00 (SEE SHEET 1 OF 2)

VICTORIA AVE

SEE SHEET 1 OF 2 FOR CONSTRUCTION NOTE LEGEND

Underground Service Alert
 CALL BEFORE YOU DIG
 CALL: TOLL FREE
 1-800-227-2600
 TWO WORKING DAYS BEFORE YOU DIG

405 CONSTRUCT CATCH BASIN PER CITY STD 405. INTERCEPT LATERAL CONSTRUCTED PER DRAWING NO. D-841. CONTRACTOR TO VERIFY LOCATION AND DEPTH OF INVERT PRIOR TO FORMING.



BENCHMARK E4-B2 BRASS DISK STAMPED "EB-4" IN CAPPED WELL AT THE INTERSECTION OF VICTORIA AVENUE AND VAN BUREN BOULEVARD. ELEVATION: 884.412	 ENGINEER IN RESPONSIBLE CHARGE Edward Lara R.C.E. No. 63753 expires 9/30/10 DATE June 17, 2010	<table border="1"> <tr> <th>MARK</th> <th>REVISIONS</th> <th>APPR.</th> <th>DATE</th> </tr> <tr> <td></td> <td>PROVIDED CONST. DATA FOR NEW CB</td> <td>EL</td> <td>6/17/10</td> </tr> </table>	MARK	REVISIONS	APPR.	DATE		PROVIDED CONST. DATA FOR NEW CB	EL	6/17/10	<table border="1"> <tr> <th>APPROVED BY</th> <th>BY</th> <th>DATE</th> </tr> <tr> <td>PRINCIPAL ENGINEER</td> <td></td> <td></td> </tr> <tr> <td>CONSTRUCTION ADMIN.</td> <td></td> <td></td> </tr> <tr> <td>SURVEYOR</td> <td>CB</td> <td>6/17/10</td> </tr> <tr> <td>TRAFFIC ENGINEER</td> <td>JENBE</td> <td>6/17/10</td> </tr> </table>	APPROVED BY	BY	DATE	PRINCIPAL ENGINEER			CONSTRUCTION ADMIN.			SURVEYOR	CB	6/17/10	TRAFFIC ENGINEER	JENBE	6/17/10	CITY OF RIVERSIDE, CALIFORNIA PUBLIC WORKS DEPARTMENT APPROVED BY: <i>[Signature]</i> CITY ENGINEER DATE: 6/18/10	VAN BUREN BOULEVARD MEDIAN IMPROVEMENTS (CLEVELAND AVE TO VICTORIA AVE) VAN BUREN BOULEVARD STA 29+00 TO STA 35+00 HORIZ. SCALE: 1"=20' VERT. SCALE: 1"=4' SHEET 2 OF 2 FILE NO.	DESIGN WORK ORDER NO. 1013790 R-4170
			MARK	REVISIONS	APPR.	DATE																							
	PROVIDED CONST. DATA FOR NEW CB	EL	6/17/10																										
APPROVED BY	BY	DATE																											
PRINCIPAL ENGINEER																													
CONSTRUCTION ADMIN.																													
SURVEYOR	CB	6/17/10																											
TRAFFIC ENGINEER	JENBE	6/17/10																											
DESIGNED BY: _____ DRAWN BY: _____ CHECKED BY: _____																													