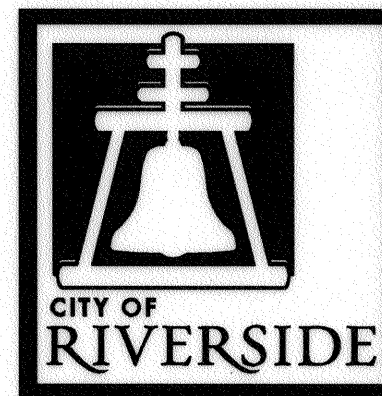


GENERAL CONSTRUCTION NOTES:

- PRIME CONTRACTOR BIDDING THIS PROJECT SHALL HAVE A CLASS "A" OR "C-8" LICENSE.
- CONSTRUCTION SHALL BE IN ACCORDANCE WITH THE CITY OF RIVERSIDE DEPARTMENT OF PUBLIC WORKS STANDARD DRAWINGS AND THE "STANDARD SPECIFICATIONS FOR PUBLIC WORKS CONSTRUCTION", 2009 EDITION.
- NO SURVEY STAKING WILL BE PROVIDED BY THE CITY FOR SIDEWALK, DRIVEWAY APPROACHES AND WHEELCHAIR RAMP CONSTRUCTION.
- EXISTING UTILITIES SHOWN ON THIS PLAN ARE PLOTTED FROM UTILITY RECORDS. THE CONTRACTOR IS REQUIRED TO TAKE DUE PRECAUTIONARY MEASURES TO LOCATE AND PROTECT ALL UTILITIES WITHIN THE CONSTRUCTION WORK AREAS WHETHER OR NOT SHOWN ON THIS PLAN.
- CONTRACTOR SHALL GRADE BEHIND PROPOSED SIDEWALK TO ENSURE PROPER TRANSITION INTO THE LOT AND SHALL NOT IMPEDE EXISTING DRAINAGE PATTERNS.

RIVERSIDE



CALIFORNIA

PUBLIC WORKS DEPARTMENT RANDOLPH STREET AND LAKE STREET SIDEWALK IMPROVEMENTS

SPECIFIC CONSTRUCTION NOTES:

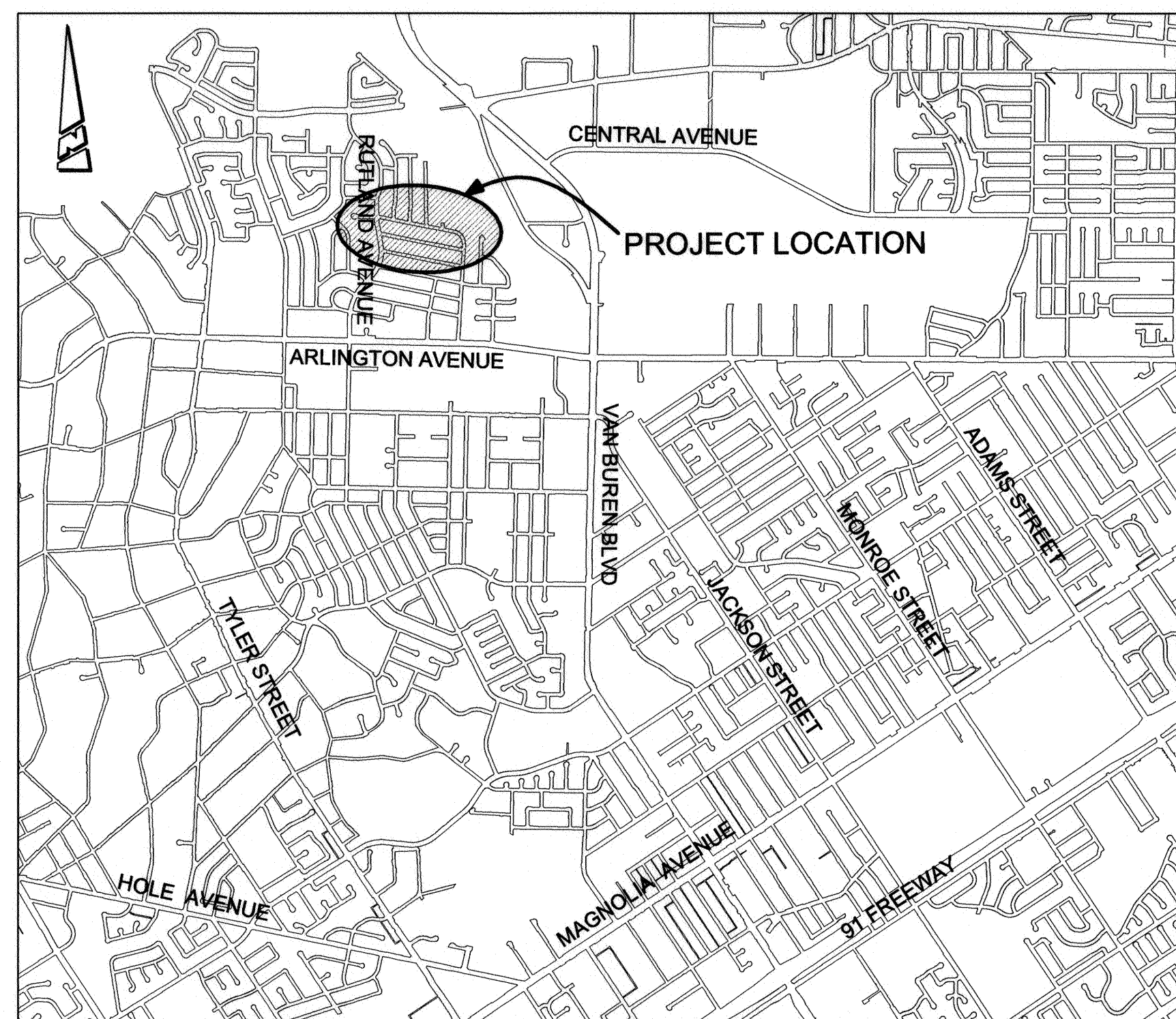
- NUMBERS ABOVE 100 IN A HEXAGON ON THE PLAN REFER TO THE RESPECTIVE STANDARD DRAWING AND SHALL BE CONSTRUCTED ACCORDINGLY. UNLESS MODIFICATIONS ARE NOTED ON THE PLAN OR COVER SHEET. ANY NUMBER SHOWN BELOW THE STANDARD DRAWING NUMBER INDICATES THE SPECIFIC ALTERNATE TO BE CONSTRUCTED.
- CONSTRUCT P.C.C. SIDEWALK PER CITY STANDARD NO. 325. (XX=TYPE PER PLAN) THE FOLLOWING IS THE LEGEND FOR "XX":
PL=PROPERTY LINE SIDEWALK; CB=CURB SIDEWALK
- CONSTRUCT P.C.C. WHEELCHAIR RAMP PER CITY STANDARD DRAWING 304. TYPE AND LOCATION OF RAMP MAY CHANGE DURING CONSTRUCTION TO FIT SITE CONDITION AS DIRECTED BY THE ENGINEER. CONTRACTOR TO ENSURE THE PROPOSED RAMP DOES NOT ENCRoACH INTO PRIVATE PROPERTY.
- ADJUST THE FOLLOWING UTILITIES. THE FOLLOWING IS THE LEGEND: WM=WATER METER TO GRADE; SW=SEWER MANHOLE TO SIDEWALK GRADE (RETAINING CURB BEHIND MANHOLE); SLPB=STREET LIGHT PULL BOX TO GRADE; ELEC=ELECTRIC VAULT.
- CONSTRUCT P.C.C. DRIVEWAY APPROACH PER CITY STANDARD DRAWING 302. (XX=TYPE PER PLAN). THE FOLLOWING IS THE LEGEND FOR "XX":
PL=DRIVEWAY APPROACH WITH PROPERTY LINE SIDEWALK; CB=DRIVEWAY APPROACH WITH CURB SIDEWALK CENTERING OF PROPOSED DRIVEWAY TO MATCH EXISTING DRIVEWAY CENTERLINE.
- PROTECT IN PLACE EXISTING FACILITY (XX=TYPE PER PLAN). THE FOLLOWING IS THE FACILITY LEGEND FOR "XX":
SGN=SIGN; MB=MAILBOX; SL=STREET LIGHT; GUY=GUY WIRE; FH=FIRE HYDRANT; PP=POWER POLE; TR=TREE;
CLF=CHAIN LINK FENCE; PIL=PILASTER FENCE; RSR=UTILITY RISER; RAMP=PEDESTRIAN RAMP; BKW=BRICK WALL;
WDF=WOOD FENCE; BSH=BUSH/SHRUBS; VAULT=UTILITY VAULTS; WM=WATER METER; SD=STORM DRAIN.
- TREE STUMP TO BE REMOVED BY CITY FORCES PRIOR TO COMMENCEMENT OF PROJECT.
- STREET TREE TO BE REMOVED BY CITY FORCES PRIOR TO COMMENCEMENT OF PROJECT.
- REMOVE EXISTING FACILITY (XX=TYPE PER PLAN). THE FOLLOWING IS THE FACILITY LEGEND:
PAV=PAVERS; WLK=WALKWAY TO ALLOW FOR CONSTRUCTION OF NEW SIDEWALK; BLK=REMOVE PORTIONS OF BLOCK WALL TO BEHIND RIGHT OF WAY, CONTRACTOR SHALL PROVIDE A SMOOTH FINISH ON ALL SIDES WITH A CAP, MATCH IN KIND; SWK=EXIST SIDEWALK; BSH=BUSH.
- RELOCATE EXISTING SIGN.
- CONTRACTOR SHALL CONSTRUCT RETAINING CURB MONOLITHIC POUR WITH SIDEWALK AS NECESSARY TO MATCH EXISTING TERRAIN BEHIND PROPOSED SIDEWALK, 18" MAX HEIGHT.
- CONSTRUCT MODIFIED DRIVEWAY. MODIFICATION INCLUDES 1' DRIVEWAY RAMP INSTEAD OF THE STANDARD 2' FROM THE BACK OF CURB.
- GRIND UTILITY CONCRETE PAD AS NECESSARY TO MATCH NEW SIDEWALK.
- REMOVE AND REPLACE EXISTING FACILITY (XX=TYPE PER PLAN). THE FOLLOWING IS THE FACILITY LEGEND:
CNC=PORTIONS OF EXISTING SIDEWALK AND/OR DRIVEWAY AS NECESSARY TO MATCH NEW IMPROVEMENTS AND TO ACHIEVE STANDARD CROSS SLOPES; SPAN=CROSS GUTTER SPANDREL; SWK=SIDEWALK.

CONSTRUCTION LEGEND:

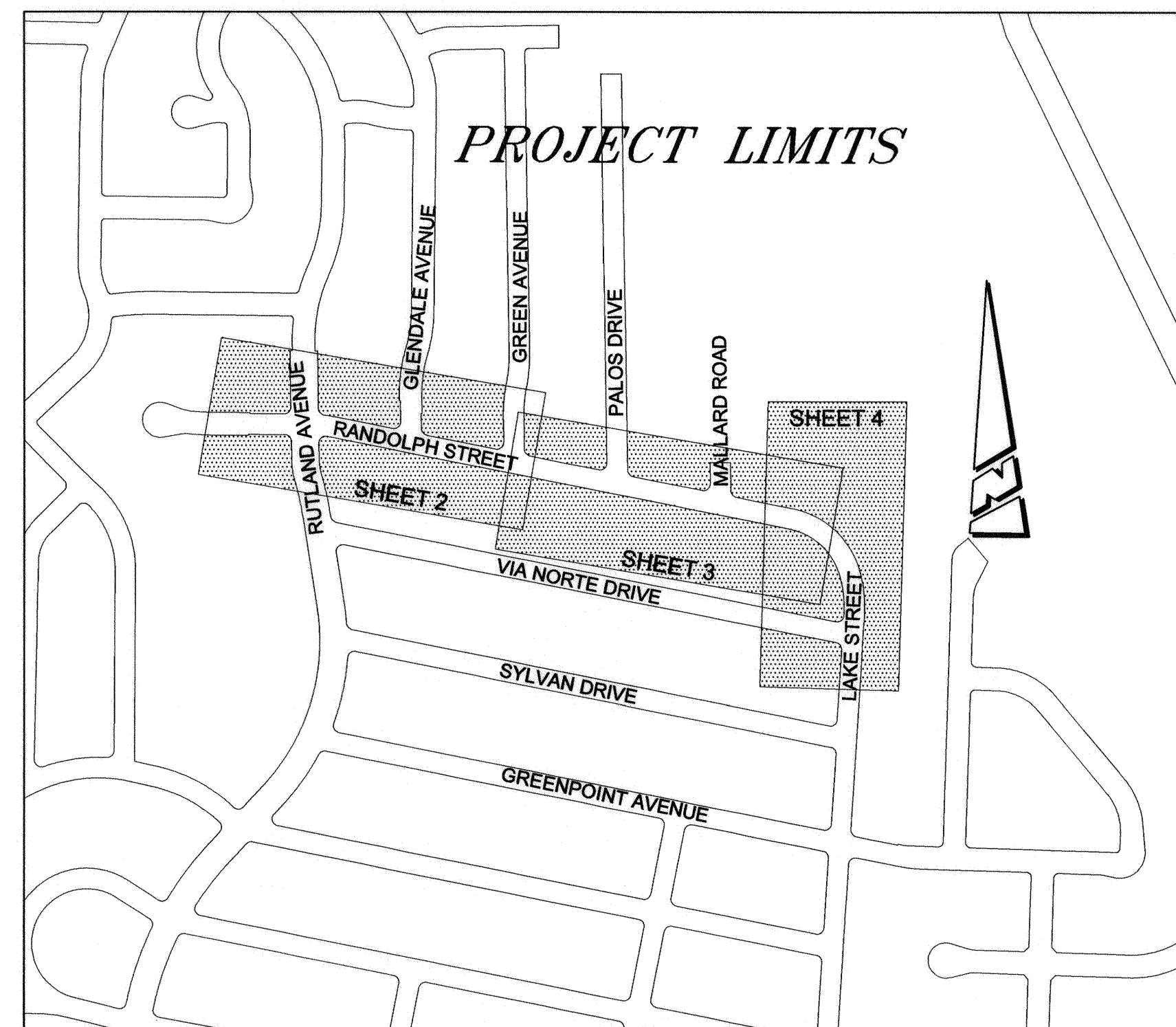
---	STREET CENTERLINE	---	STREET R/W
TC	TOP OF CURB	STA	STREET STATION
EP	EDGE OF PAVEMENT	AC	ASPHAL CONCRETE
FL	FLOWLINE	PCC	PORTLAND CEMENT CONCRETE
FS	FINISHED SURFACE	C&G	CURB AND GUTTER
CL	CENTERLINE	R/W	RIGHT OF WAY
SW	SIDEWALK	R&R	REMOVE AND REPLACE
	CONCRETE		RETAINING CURB

EXISTING TOPOGRAPHY:

- SANITARY SEWER M.H.
- STORM DRAIN M.H.
- WATER GATE VALVE
- WATER METER
- FIRE HYDRANT
- IRRIGATION METER
- TRAFFIC SIGN
- POWER POLE
- GUY ANCHOR
- STREET LIGHT ON MAST ARM
- CHAIN LINK FENCE
- WOOD FENCE
- BUSHES/SHRUBS
- PALM TREE
- MISC. TREE
- TREE STUMP
- MAIL BOX
- DIRECTION DRAINAGE FLOW



LOCATION MAP
NTS



INDEX MAP
NTS

EXISTING UNDERGROUND UTILITIES:

SANITARY SEWER	---	EX SWR
WATER LINE	---	EX WTR
GAS LINE	---	(G)
UNDERGROUND ELECTRIC	---	(UGE)
OVERHEAD ELECTRIC	---	(OHE)
TELEPHONE LINE	---	T

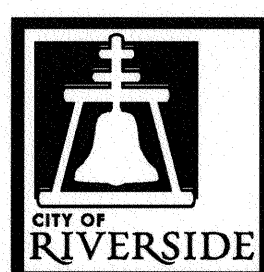
SIDEWALK IMPROVEMENT INDEX (R-4195):

SHEET NO.	DESCRIPTION
1	TITLE SHEET
2	RANDOLPH STREET, 160' WEST OF RUTLAND AVE TO GREEN AVE.
3	RANDOLPH STREET, GREEN AVE TO 350' EAST OF MALLARD DR.
4	RANDOLPH STREET, 350' EAST OF MALLARD DR TO LAKE ST.

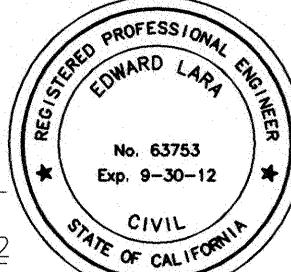
NOTE:

- DRIVEWAY P.C.C. MATCH UP SHALL BE 6" (THICK) OVER 95% COMPACTED NATIVE.
- ENGINEER SHALL FIELD LOCATE AND MARK LIMITS OF CURB AND GUTTER TO BE REPLACED.
- CONTRACTOR TO WIDEN SIDEWALK AROUND EXISTING FACILITIES AS NECESSARY TO ACHIEVE A 3' MINIMUM WIDTH. 4' WIDE PREFERRED OR RELOCATE FACILITY IF NECESSARY.

Under Ground Service Alert of Southern California
Call: TOLL FREE 1-800-227-2600
TWO WORKING DAYS BEFORE YOU DIG



ENGINEER IN RESPONSIBLE CHARGE
Edward Lara
EDWARD LARA
R.C.E. No. 63753 EXPIRES: 09-30-12
DATE August 8, 2011



DESIGNED BY	LA	DRAWN BY	LA	CHECKED BY	EL
-------------	----	----------	----	------------	----

CITY OF RIVERSIDE, CALIFORNIA DEPARTMENT OF PUBLIC WORKS			
APPROVED BY	BY	DATE	APPROVED BY
ENGINEERING MANAGER	<i>F.M.</i>	8/10/11	<i>Shirley</i>
PRINCIPAL ENGINEER			CITY ENGINEER
CONSTRUCTION ADMIN.	<i>DS</i>	8/10/11	
TRAFFIC DIVISION	<i>S.D.</i>	8/11/11	DATE 8/11/2011

SB-821 FACILITIES PROGRAM	CONSTR. WORK ORDER NO.: 1120332
RANDOLPH STREET AND LAKE STREET SIDEWALK IMPROVEMENTS	DESIGN WORK ORDER NO.: 1021524
TITLE SHEET	R-4195
	SHEET 1 OF 4
HORIZ. SCALE: N/A	FILE NAME: R4195-01.DWG

VERT. SCALE: N/A

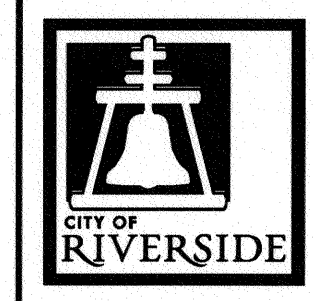
SPECIFIC CONSTRUCTION NOTES:

- NUMBERS ABOVE 100 IN A HEXAGON ON THE PLAN REFER TO THE RESPECTIVE STANDARD DRAWING AND SHALL BE CONSTRUCTED ACCORDINGLY. UNLESS MODIFICATIONS ARE NOTED ON THE PLAN OR COVER SHEET. ANY NUMBER SHOWN BELOW THE STANDARD DRAWING NUMBER INDICATES THE SPECIFIC ALTERNATE TO BE CONSTRUCTED.
- CONSTRUCT P.C.C. SIDEWALK PER CITY STANDARD NO 325. THE FOLLOWING IS THE LEGEND:
PL-I=PROPERTY LINE SIDEWALK; CB-I= CURB SIDEWALK
- CONSTRUCT P.C.C. WHEELCHAIR RAMP PER CITY STANDARD DRAWING 304. TYPE AND LOCATION OF RAMP MAY CHANGE DURING CONSTRUCTION TO FIT SITE CONDITION AS DIRECTED BY THE ENGINEER. ENSURE THE PROPOSED RAMP DOES NOT ENCROUGH INTO PRIVATE PROPERTY.
- ADJUST THE FOLLOWING UTILITIES. THE FOLLOWING IS THE LEGEND:
WM=WATER METER TO GRADE; SW=SEWER MANHOLE TO SIDEWALK GRADE (RETAINING CURB BEHIND MANHOLE); SLPB=STREET LIGHT PULL BOX TO GRADE; ELEC=ELECTRIC VAULT.
- CONSTRUCT P.C.C. DRIVEWAY APPROACH PER CITY STANDARD DRAWING 302. THE FOLLOWING IS THE LEGEND:
PL-I=DRIVEWAY APPROACH WITH PROPERTY LINE SIDEWALK; CB-I= DRIVEWAY APPROACH WITH CURB SIDEWALK CENTERING OF PROPOSED DRIVEWAY TO MATCH EXISTING DRIVEWAY CENTERLINE.
- PROTECT IN PLACE EXISTING FACILITY (XX=TYPE PER PLAN). THE FOLLOWING IS THE FACILITY LEGEND:
SGN=SIGN; MB=MAILBOX; SL=STREET LIGHT; GUY=GUY WIRE; FH=FIREF HYDRANT; PP=POWER POLE; TR=TREE; CLF=CHAIN LINK FENCE; PIL=PILASTER FENCE; RSR= UTILITY RISER; RAMP=PEDESTRIAN RAMP; BKW=BRICK WALL; WDF=WOOD FENCE; BSH=BUSH/SHRUBS; VAULT=UTILITY VAULTS; WM=WATER METER; SD=STORM DRAIN
- TREE STUMP TO BE REMOVED BY CITY FORCES PRIOR TO COMMENCEMENT OF PROJECT.
- STREET TREE TO BE REMOVED BY CITY FORCES PRIOR TO COMMENCEMENT OF PROJECT.
- REMOVE EXISTING FACILITY (XX=TYPE PER PLAN). THE FOLLOWING IS THE FACILITY LEGEND:
PAV=PAVERS; WLK=WALKWAY TO ALLOW FOR CONSTRUCTION OF NEW SIDEWALK; BLK=REMOVE PORTIONS OF BLOCK WALL TO BEHIND RIGHT OF WAY, CONTRACTOR SHALL PROVIDE A SMOOTH FINISH ON ALL SIDES WITH A CAP, MATCH IN KIND; SWK=EXIST SIDEWALK; BSH=BUSH.
- RELOCATE EXISTING SIGN.
- REMOVE AND REPLACE EXISTING FACILITY (XX=TYPE PER PLAN). THE FOLLOWING IS THE FACILITY LEGEND:
CNC=PORTIONS OF EXISTING SIDEWALK AND/OR DRIVEWAY AS NECESSARY TO MATCH NEW IMPROVEMENTS AND TO ACHIEVE STANDARD CROSS SLOPES; SPAN=CROSS GUTTER SPANDREL; SWK=SIDEWALK.
- CONTRACTOR SHALL CONSTRUCT RETAINING CURB MONOLITHIC POUR WITH SIDEWALK AS NECESSARY, 18" MAX HEIGHT.
- CONSTRUCT MODIFIED DRIVEWAY. MODIFICATION INCLUDES 1' DRIVEWAY RAMP INSTEAD OF THE STANDARD 2' FROM THE BACK OF CURB.

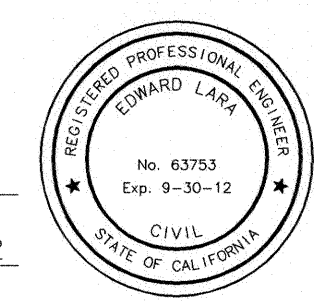


- NOTE:**
- DRIVEWAY P.C.C MATCH UP SHALL BE 6" (THICK) OVER 95% COMPACTED NATIVE.
 - ENGINEER SHALL FIELD LOCATE AND MARK LIMITS OF CURB AND GUTTER TO BE REPLACED.
 - CONTRACTOR TO WIDEN SIDEWALK AROUND EXISTING FACILITIES AS NECESSARY TO ACHIEVE A 3' MINIMUM WIDTH. 4' WIDE PREFERRED OR RELOCATE FACILITY IF NECESSARY.

Under Ground Service Alert of Southern California
Call: TOLL FREE 1-800-227-2600
TWO WORKING DAYS BEFORE YOU DIG



ENGINEER IN RESPONSIBLE CHARGE
Edward Lara
Name: EDWARD LARA
R.C.E. No. 63753 EXPIRES: 9-30-12
DATE August 8, 2011



DESIGNED BY	LA	DRAWN BY	LA	CHECKED BY	EL
REVISIONS		APPR.		DATE	

CITY OF RIVERSIDE, CALIFORNIA
DEPARTMENT OF PUBLIC WORKS

APPROVED BY	BY	DATE	APPROVED BY	DATE
ENGINEERING MANAGER	F.M.	8/10/11	<i>[Signature]</i>	8/10/11
PRINCIPAL ENGINEER			CITY ENGINEER	
CONSTRUCTION ADMIN.	DG	8/10/11		
TRAFFIC DIVISION	J.H.	8/11/11		

SB-821 FACILITIES PROGRAM		CONSTR. W.O. NO. 1120332
RANDOLPH STREET		DESIGN W.O. NO. - 1021524
GREEN AVE TO 350' EAST OF MALLARD DR.		R-4195
RANDOLPH STREET SIDEWALK		SHEET 3 OF 4
HORIZ. SCALE: 1"=20'		VERT. SCALE: N/A
		FILE NAME: R4195-03.DWG

