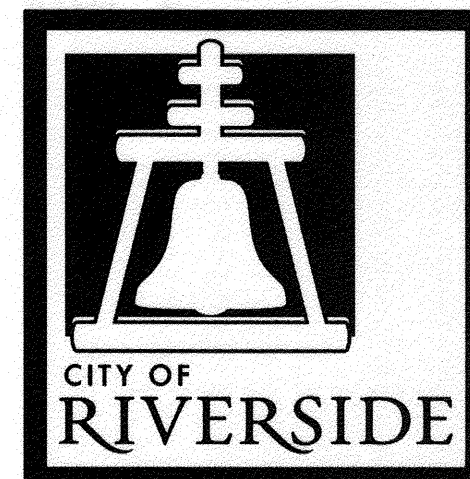


GENERAL CONSTRUCTION NOTES

- 1 THE CONTRACTOR SHALL PROVIDE AND MAINTAIN TRAFFIC AS INDICATED IN THE ASSOCIATED PROJECT SPECIAL PROVISIONS.
- 2 CONSTRUCTION SHALL BE IN ACCORDANCE WITH THE CITY OF RIVERSIDE STANDARD DRAWINGS AND STANDARD SPECIFICATIONS FOR PUBLIC WORKS CONSTRUCTION, 2009 EDITION.
- 3 EXISTING UTILITIES SHOWN ON THIS PLAN ARE PLOTTED FROM UTILITY RECORDS. THE CONTRACTOR IS REQUIRED TO TAKE DUE PRECAUTIONARY MEASURES TO LOCATE AND PROTECT ALL UTILITIES WHETHER OR NOT SHOWN ON THIS PLAN.
- 4 CONFLICTING UTILITIES SHOWN WITHIN CONSTRUCTION AREA WILL BE RELOCATED PRIOR TO CONSTRUCTION.
- 5 ALL STREET PULL BOXES, AFFECTED BY CONSTRUCTION, SHALL BE ADJUSTED TO THE PROPOSED GRADE.
- 6 PRIME CONTRACTOR BIDDING THIS WORK SHALL HAVE A CLASS "A" OR "C-12".
- 7 THE SEAM BETWEEN PASSES OF THE AC OVERLAY SHALL COINCIDE, AS CLOSE AS POSSIBLE, TO THE LANE LINES.
- 8 COLD MILLING SHALL BE AS DESCRIBED ON THE PLANS AND SPECIAL PROVISIONS OR AS DIRECTED BY THE ENGINEER.
- 9 ANY DISTRESSED EXISTING PAVEMENT SHALL BE REMOVED AND REPLACED AS DIRECTED BY THE ENGINEERING AFTER COLD-MILLING AND PRIOR TO PLACEMENT OF DGAC.

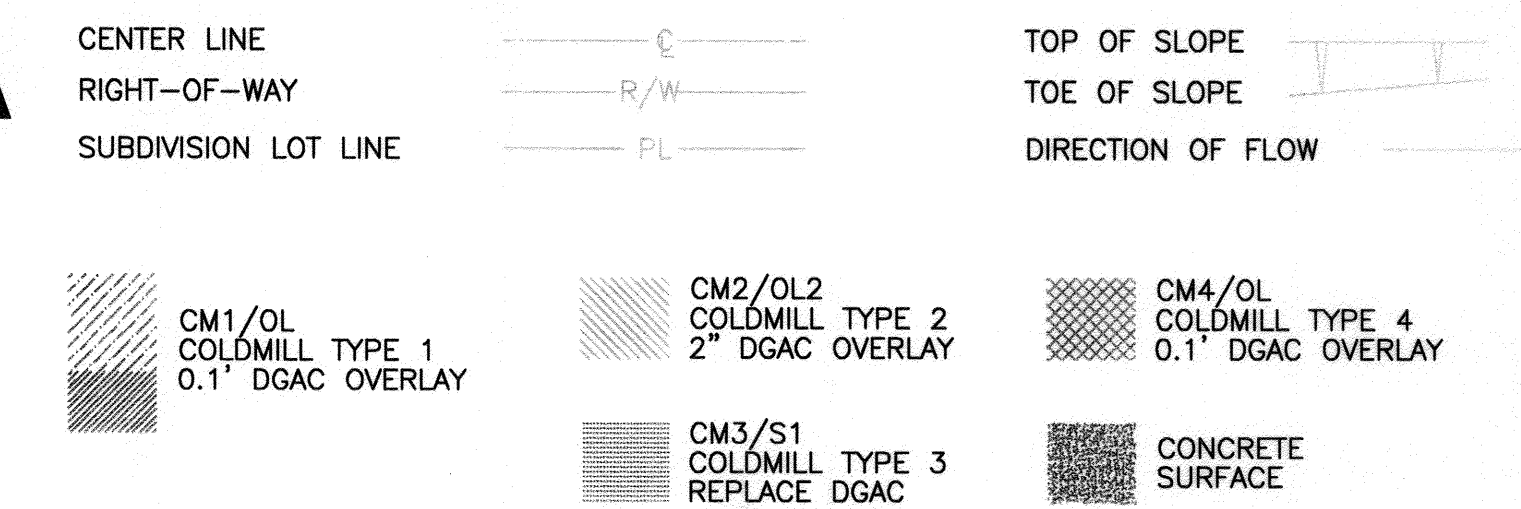
RIVERSIDE



CALIFORNIA

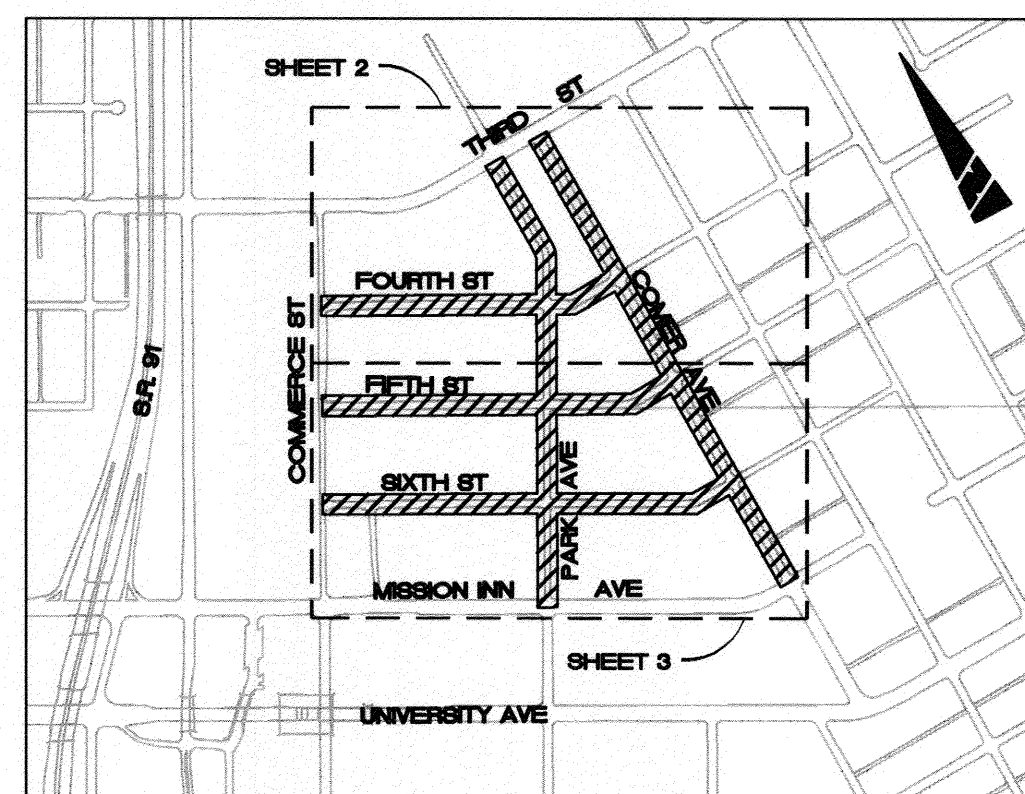
PUBLIC WORKS DEPARTMENT MINOR STREETS MAINTENANCE 2011/2012 - PHASE 1

CONSTRUCTION LEGEND

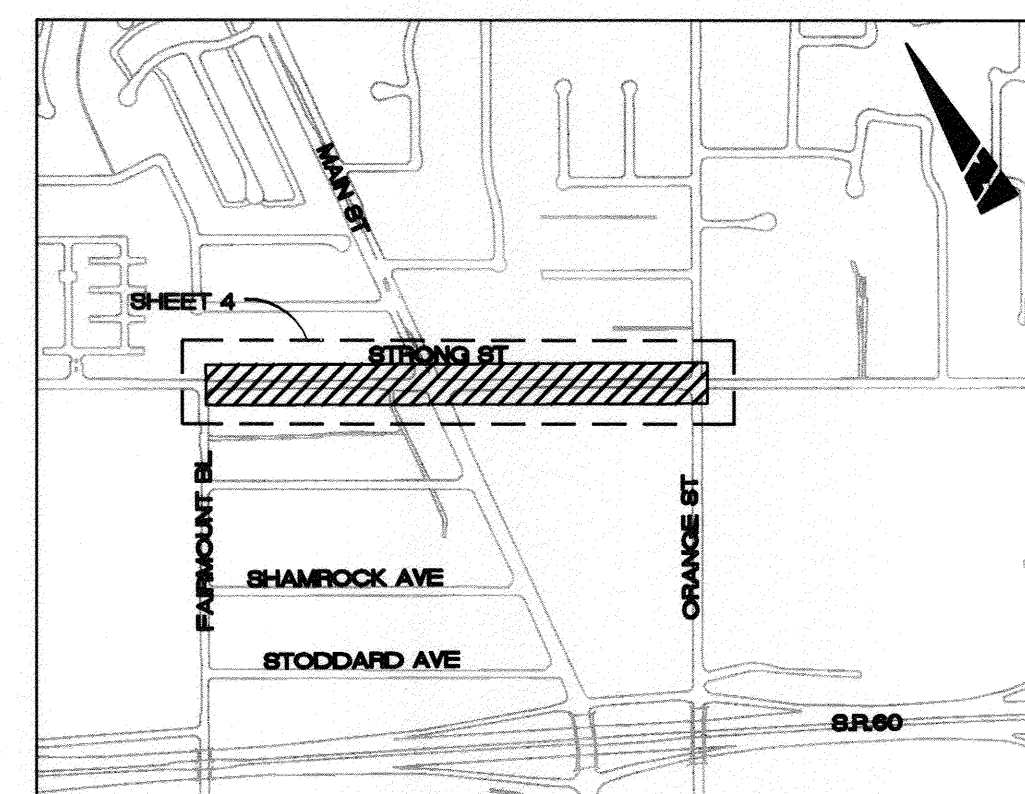


SPECIFIC CONSTRUCTION NOTES

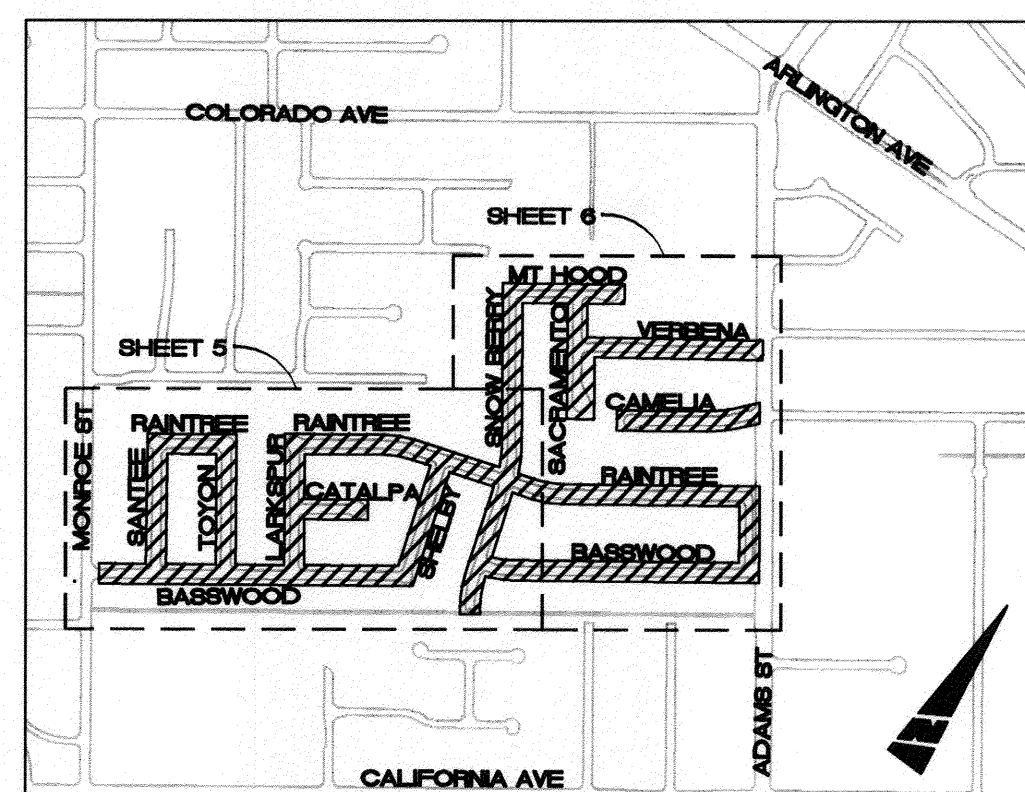
- NUMBERS ABOVE 100 IN A HEXAGON ON THE PLAN REFER TO THE RESPECTIVE STANDARD DRAWING AND SHALL BE CONSTRUCTED ACCORDINGLY. UNLESS MODIFICATIONS ARE NOTED ON THE PLAN OR COVER SHEET. ANY NUMBER SHOWN BELOW THE STANDARD DRAWING NUMBER INDICATES THE SPECIFIC ALTERNATE TO BE CONSTRUCTED.
- ADJ XX ADJUST EXISTING FACILITY TO GRADE. THE FOLLOWING IS THE LEGEND:
GV = GATE VALVE; MH = MANHOLE COVER (D=STORM DRAIN; S=SEWER)
WM = WATER METER
- CM1 OL 5' WIDE COLD MILL ALONG EDGE OF PAVEMENT AND 0.1' MINIMUM OVERLAY ON ALL EXISTING PAVEMENT BETWEEN EDGES OF STREET PAVEMENT.
- CM2 OL2 UNIFORM 2" MINIMUM DEPTH COLD MILL AND 2" MINIMUM DEPTH OVERLAY BETWEEN EDGES OF PAVEMENT.
- CM3 S1 COLD MILL ENTIRE DEPTH OF EXISTING DGAC TO EXISTING SUB-GRADE OR BASE AND REPLACE WITH 2"-4" OF DGAC.
- CM4 OL 0.1' MINIMUM DEPTH COLD MILL AND 0.1' MINIMUM DEPTH OVERLAY BETWEEN EDGES OF PAVEMENT.
- R&R XX REMOVE AND REPLACE EXISTING IMPROVEMENT (XX = IMPROVEMENT PER CITY STANDARDS). THE FOLLOWING IS THE LEGEND:
200 = TYPE 1 CURB AND GUTTER; 220 = CROSS GUTTER (WIDTH TO MATCH EXISTING)
250 = AC BERM; 302 = DRIVEWAY (TYPE PER PLAN);
325 = SIDEWALK (TYPE AND WIDTH TO MATCH EXISTING)
- PIP XX PROTECT IN PLACE (XX = TYPE PER PLAN). THE FOLLOWING IS THE LEGEND:
CB = CATCH BASIN; SL = STREET LIGHT; PP = POWER POLE
WM = WATER METER; FH = FIRE HYDRANT; TR = TREE
RMP = PROTECT IN PLACE EXISTING HANDICAP ACCESSIBLE RAMP.
INLET = CURB SIDE INLET
- S04 M1 CONSTRUCT MODIFIED WHEELCHAIR RAMP. MODIFICATION INCLUDES INCLUDE RETAINING CURB TO PROTECT EXITING FACILITIES.
- S04 GRV CONSTRUCT GROOVES PER CITY STANDARD 304.
- S04 XX CONSTRUCT/RECONSTRUCT WHEELCHAIR RAMP PER CITY STANDARD 304:
I=TYPE I, II= TYPE II, III= TYPE III, IV= TYPE IV, V= TYPE V, VI= TYPE VI, VII= TYPE VII
- REM XX REMOVE EXISTING IMPROVEMENT (XX = EXISTING IMPROVEMENT). THE FOLLOWING IS THE LEGEND FOR "XX":
TRK = CONTRACTOR SHALL DETERMINE IF ABANDONED TRACK SPUR EXISTING AND REMOVE AND PROVIDE SUB-GRADE AS NECESSARY TO CONSTRUCT PAVEMENT
BRM = ASPHALT BERM
RMP = WHEELCHAIR RAMP
- PIP M1 PIP DIRECTIONAL RAMP ADJACENT TO STREET, BUT R&R SQUARE LANDING AREA ABOVE RAMPS. R&R SIDEWALK MATCH UPS INCLUDING RETAINING AS NECESSARY NOT TO EXCEED 8.33%. ADD GROOVES ABOVE SIDEWALK MATCH UPS IF GRADE EXCEEDS 7%.



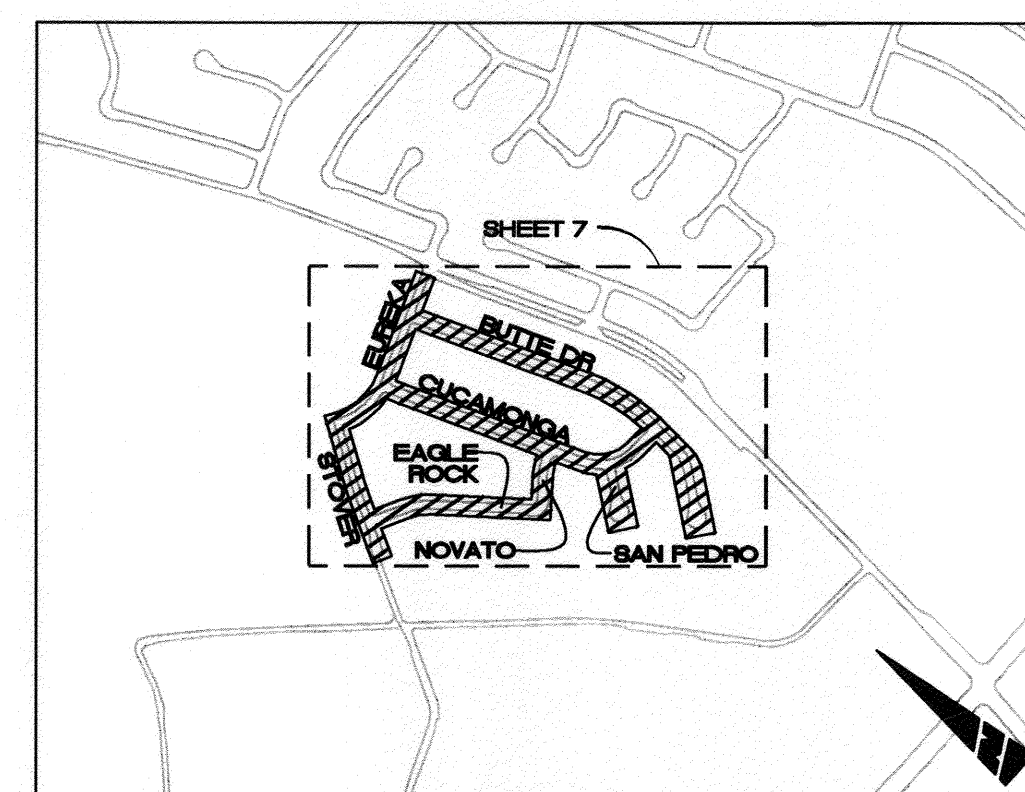
LOCATION 1
NTS



LOCATION 2
NTS



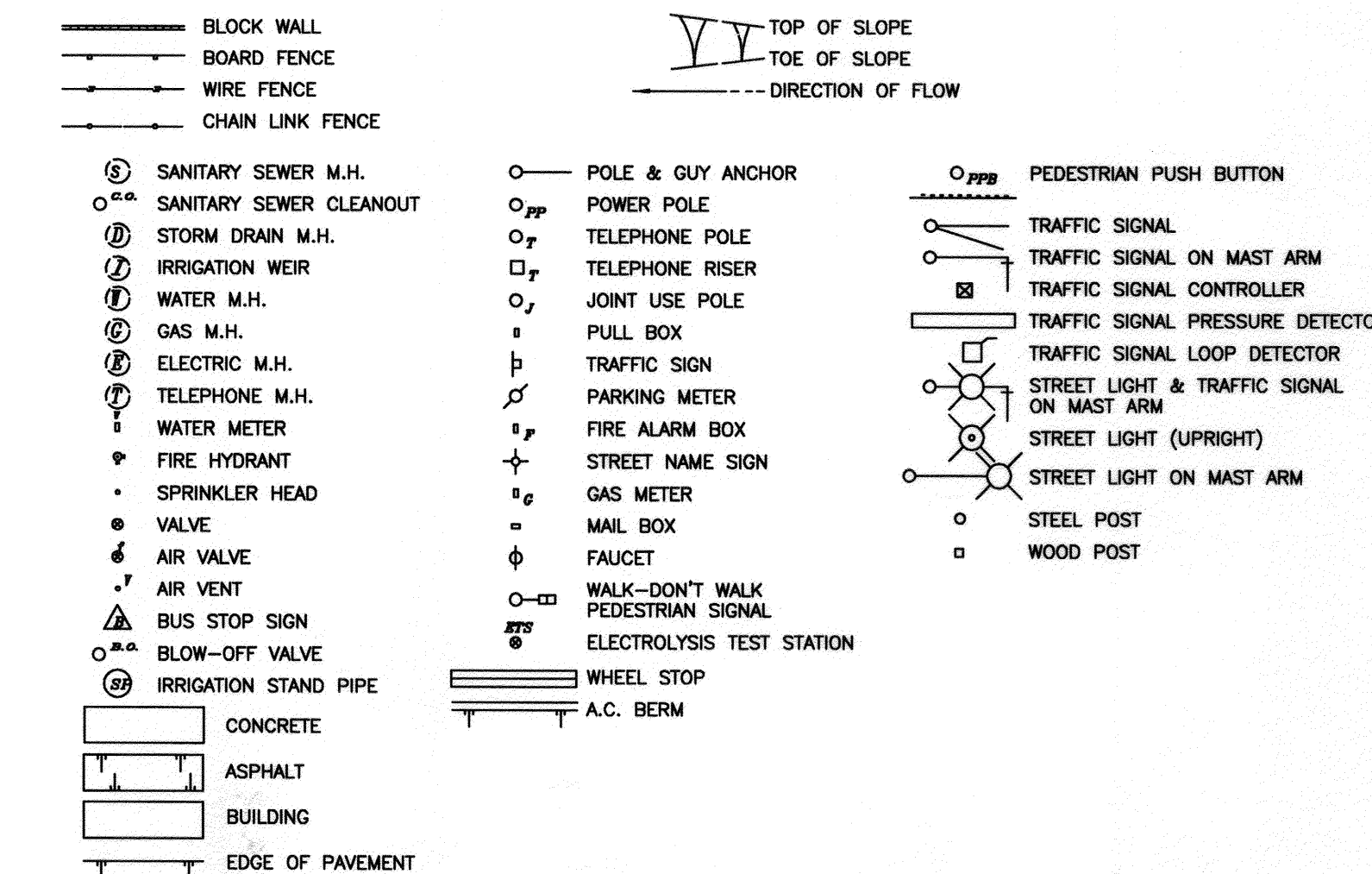
LOCATION 3
NTS



LOCATION 4
NTS



EXISTING TOPOGRAPHY:

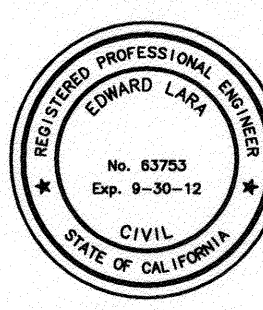


SHEET INDEX: STREET IMPROVEMENT

SHEET NO.	DESCRIPTION
1	TITLE SHEET AND NOTES
2	LOCATION 1 (THIRD ST TO FIFTH ST)
3	LOCATION 1 (FIFTH ST TO MISSION INN AVE)
4	LOCATION 2 (STRONG ST FROM FAIRMOUNT BLVD TO ORANGE ST)
5	LOCATION 3 (MONROE ST TO SNOWBERRY ST)
6	LOCATION 3 (SNOWBERRY ST TO ADAMS ST)
7	LOCATION 4 (STOVER AVE TO TYLER ST)

Under Ground Service Alert of Southern California
Call: TOLL FREE 1-800-227-2600
TWO WORKING DAYS BEFORE YOU DIG

ENGINEER IN RESPONSIBLE CHARGE
Edward Jara
Name
R.C.E. No. 63753 EXPIRES: 9-30-12
DATE: October 21, 2011



MARK	REVISIONS	APPR.	DATE
	ADDED CONSTRUCTION NOTE	EL	11/11

CITY OF RIVERSIDE, CALIFORNIA
DEPARTMENT OF PUBLIC WORKS

APPROVED BY	BY	DATE	APPROVED BY
ENGINEERING MANAGER	F.M.	10-26-11	[Signature]
CONSTRUCTION ADMIN.	D.C.	10-26-11	CITY ENGINEER
TRAFFIC DIVISION	[Signature]	10-26-11	
PRINCIPAL ENGINEER			

DESIGNED BY: JC DRAWN BY: JC CHECKED BY: EL

STREET IMPROVEMENTS
MINOR STREETS MAINTENANCE
2011/2012 - PHASE 1

TITLE SHEET AND NOTES

HORIZ. SCALE: NA VERT. SCALE: NA

DESIGN WORK ORDER NO.: 1205375
CONSTR. WORK ORDER NO.: 1205386

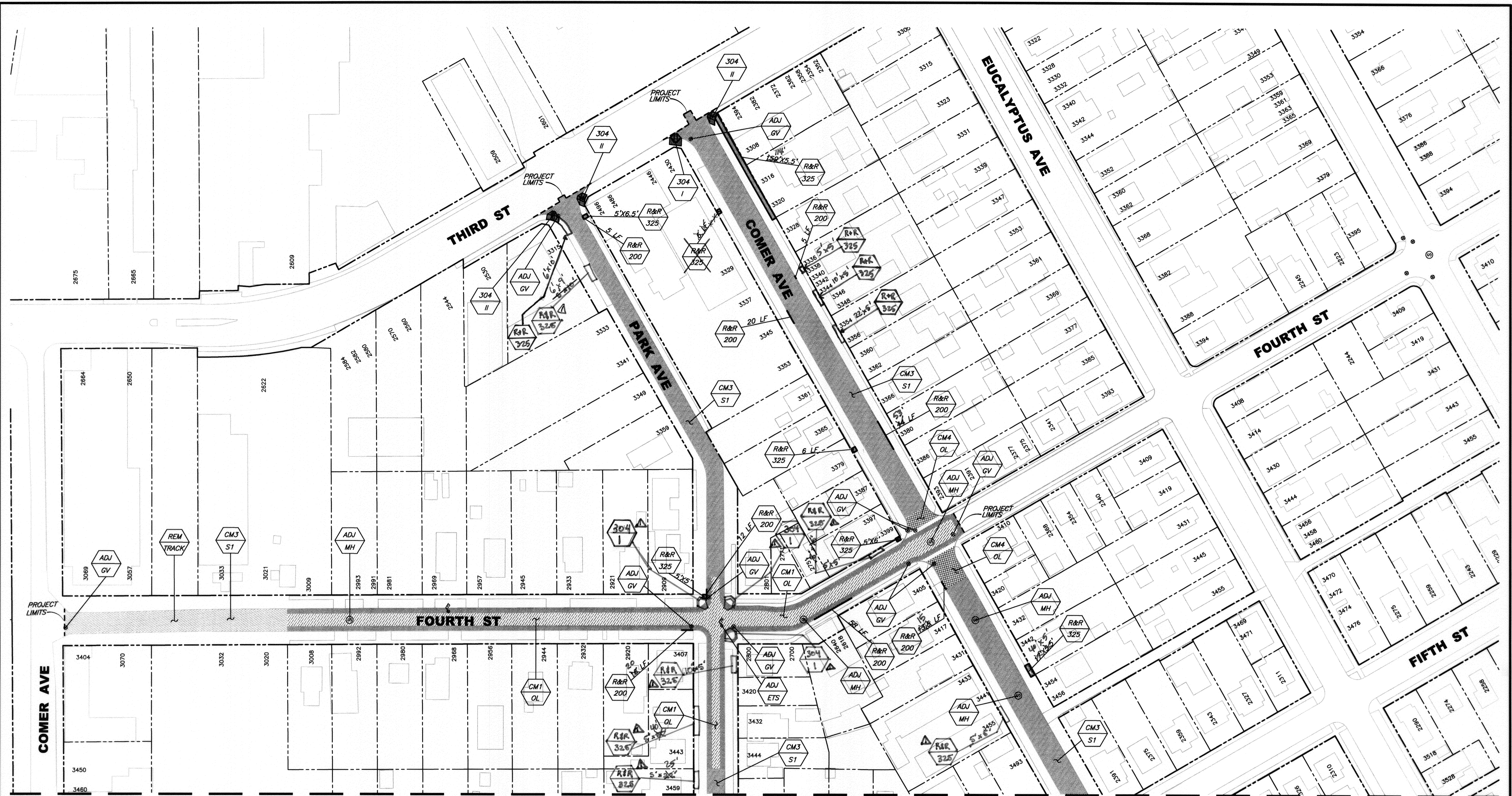
R-4221

SHEET 1 OF 7

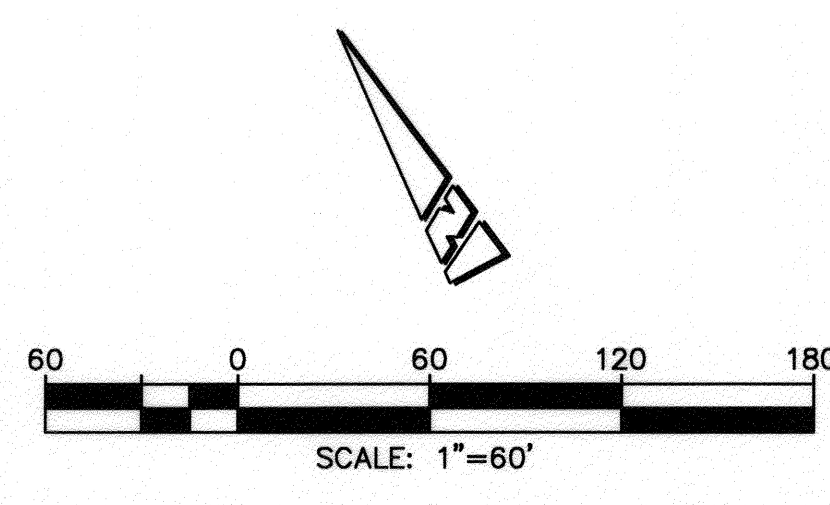
FILE NAME: R4221-01.DWG

AS-BUILT 10-26-15

Indexed 6-13-12 871



MATCH LINE (SEE SHEET 3)



Under Ground Service Alert of Southern California
 Call: TOLL FREE 1-800-227-2600
 TWO WORKING DAYS BEFORE YOU DIG

ENGINEER IN RESPONSIBLE CHARGE
 Edward Lora
 Name
 R.C.E. No. 63753 EXPIRES: 9-30-12
 DATE: October 24, 2011

MARK	REVISIONS	APPR.	DATE
1	ADDED VARIOUS MAINTENANCE AREAS	E.L.	10/11/11

CITY OF RIVERSIDE, CALIFORNIA
DEPARTMENT OF PUBLIC WORKS

APPROVED BY	BY	DATE	APPROVED BY	DATE
ENGINEERING MANAGER	F.M.	10-26-11	CITY ENGINEER	10-26-11
CONSTRUCTION ADMIN.	D.G.	10-26-11		
TRAFFIC DIVISION	L.W.	10-26-11		
PRINCIPAL ENGINEER				

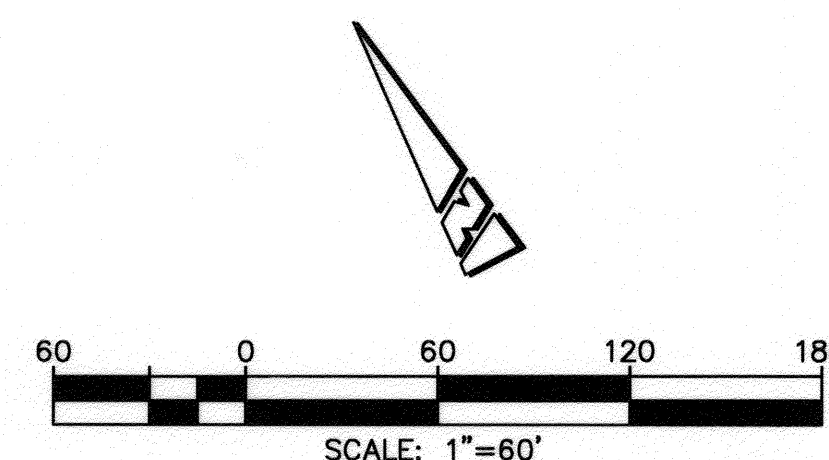
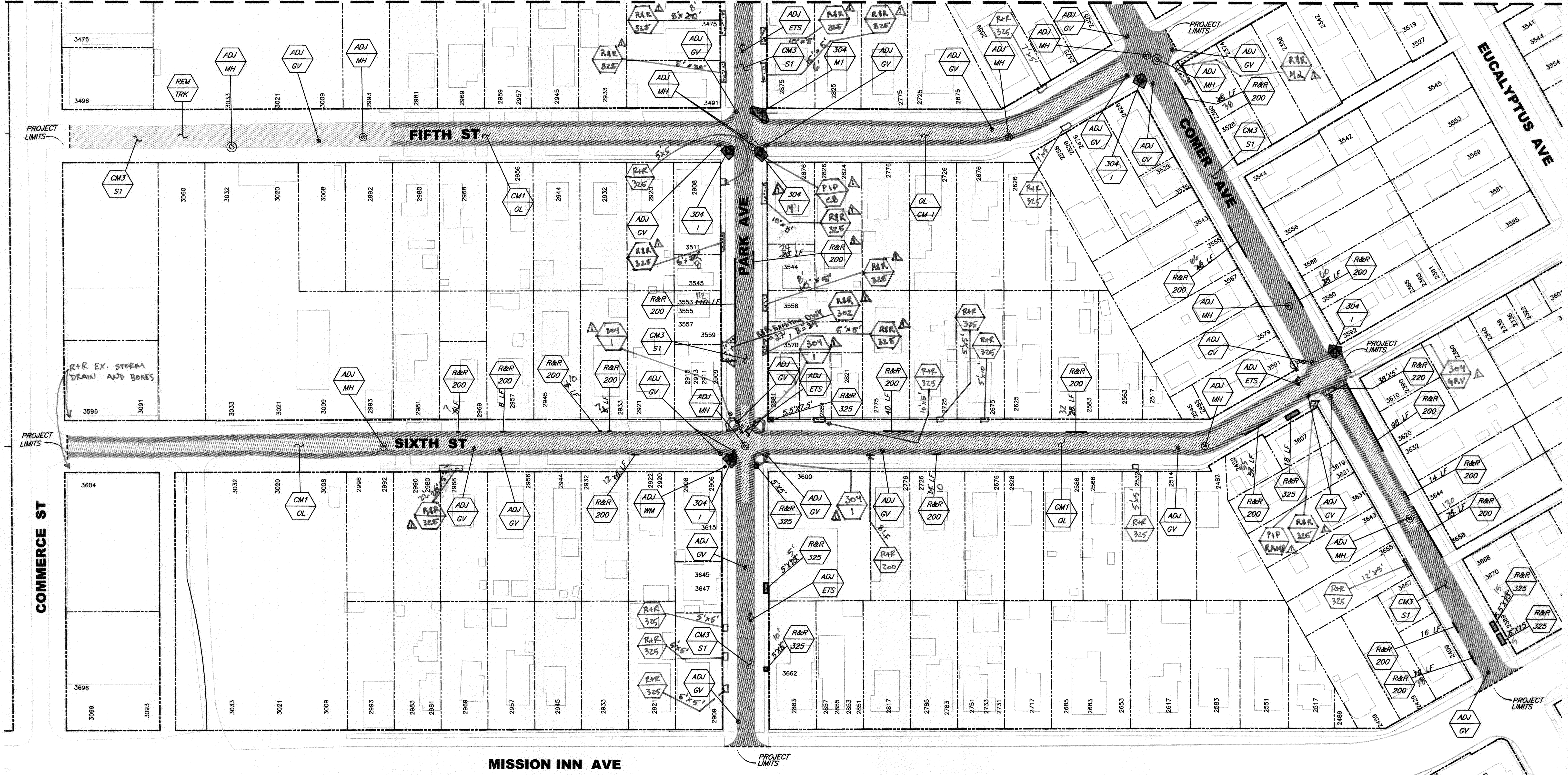
DESIGNED BY: JC DRAWN BY: JC CHECKED BY: EL

STREET IMPROVEMENTS
MINOR STREETS MAINTENANCE
 2011/2012 - PHASE 1
LOCATION NO. 1
(THIRD ST TO FIFTH ST)
 HORIZ. SCALE: 1"=60' VERT. SCALE: NA

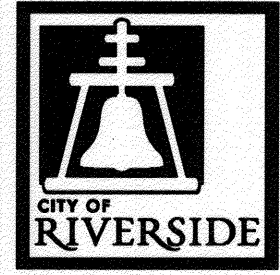
DESIGN WORK ORDER NO.: 1205375
 CONSTR. WORK ORDER NO.: 1205386
R-4221
 SHEET **2** OF **7**
 FILE NAME: R4221-02.DWG

AS-BUILT 10-26-11 DC

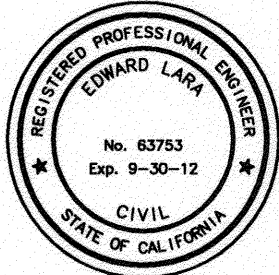
MATCH LINE (SEE SHEET 2)



Under Ground Service Alert of Southern California
 Call: TOLL FREE 1-800-227-2600
 TWO WORKING DAYS BEFORE YOU DIG



ENGINEER IN RESPONSIBLE CHARGE
 Edward Luna
 Name
 R.C.E. No. 63753 EXPIRES: 9-30-12
 DATE October 21, 2011



DESIGNED BY	JC	DRAWN BY	JC	CHECKED BY	EL
APPROVED BY	James Various Maintenance Areas				
REVISIONS					
APPR. DATE					

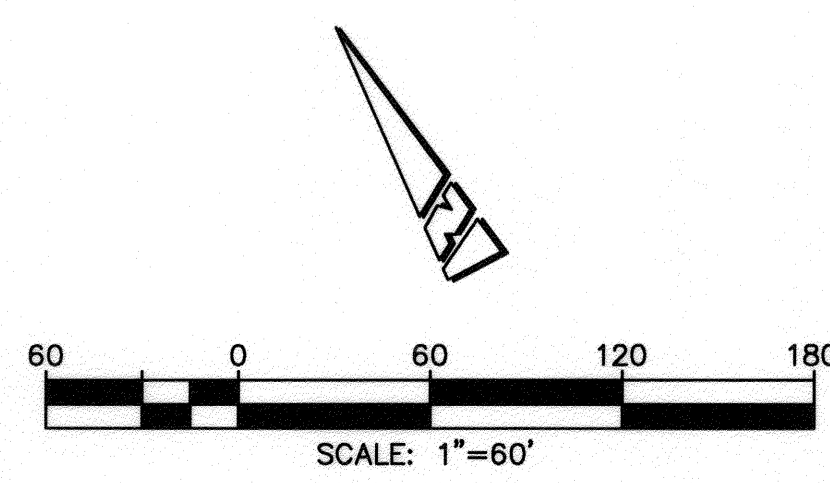
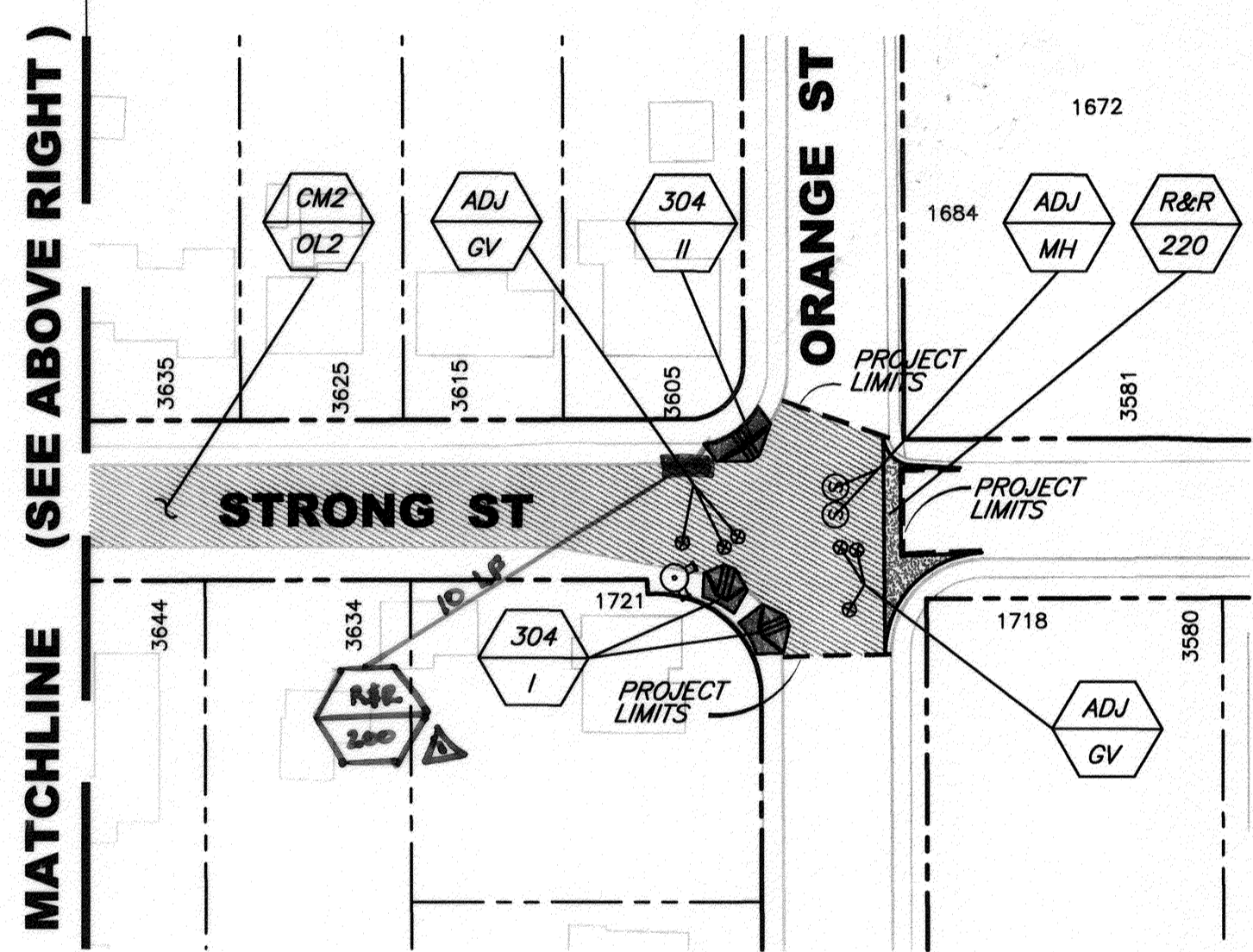
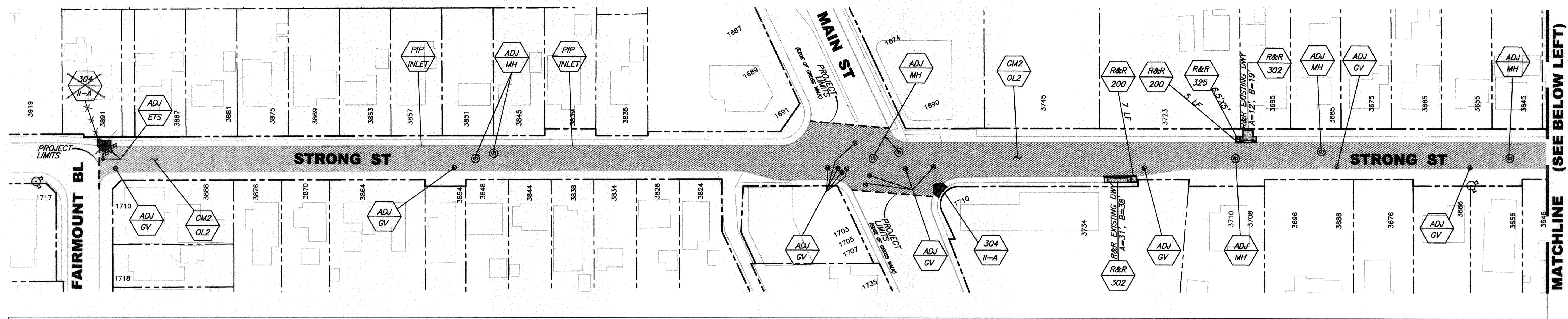
CITY OF RIVERSIDE, CALIFORNIA DEPARTMENT OF PUBLIC WORKS			
APPROVED BY	BY	DATE	APPROVED BY
ENGINEERING MANAGER	F.M.	10-26-11	CITY ENGINEER
CONSTRUCTION ADMIN.	J.C.	10-26-11	
TRAFFIC DIVISION	J.H.	10-26-11	
PRINCIPAL ENGINEER			
DATE	10/23/11		

STREET IMPROVEMENTS
 MINOR STREETS MAINTENANCE
 2011/2012 - PHASE 1
 LOCATION NO. 1
 (FIFTH ST TO MISSION INN AVE)

DESIGN WORK ORDER NO.: 1205375
 CONSTR. WORK ORDER NO.: 1205366
R-4221
 SHEET 3 OF 7
 FILE NAME: R4221-03.DWG

AS-BUILT 10-26-11 JC

INDEXED 6-13-12 BM



Under Ground Service Alert of Southern California
 Call: TOLL FREE 1-800-227-2600
 TWO WORKING DAYS BEFORE YOU DIG

ENGINEER IN RESPONSIBLE CHARGE
 Edward Lora
 Name
 R.C.E. No. 63753 EXPIRES: 9-30-12
 DATE October 24, 2011

DESIGNED BY	JC	DRAWN BY	JC	CHECKED BY	EL
REVISIONS		APPR.		DATE	
MARK	ADDED R&R OF C-46				

**CITY OF RIVERSIDE, CALIFORNIA
 DEPARTMENT OF PUBLIC WORKS**

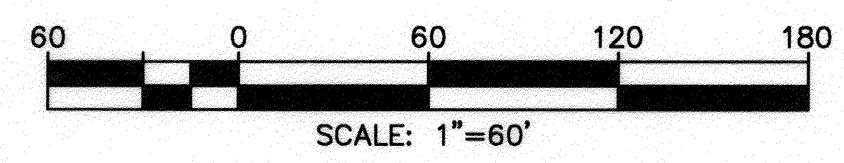
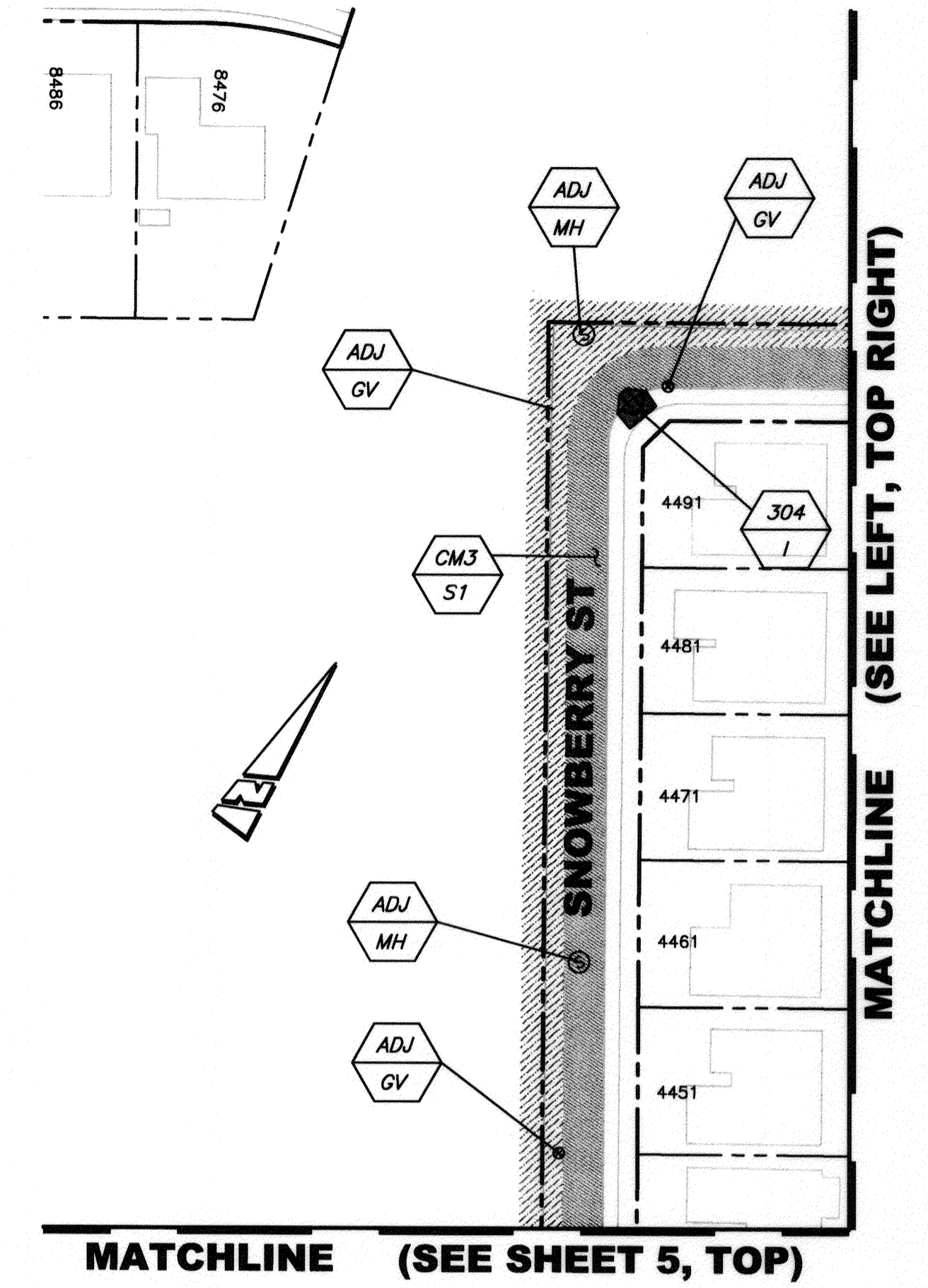
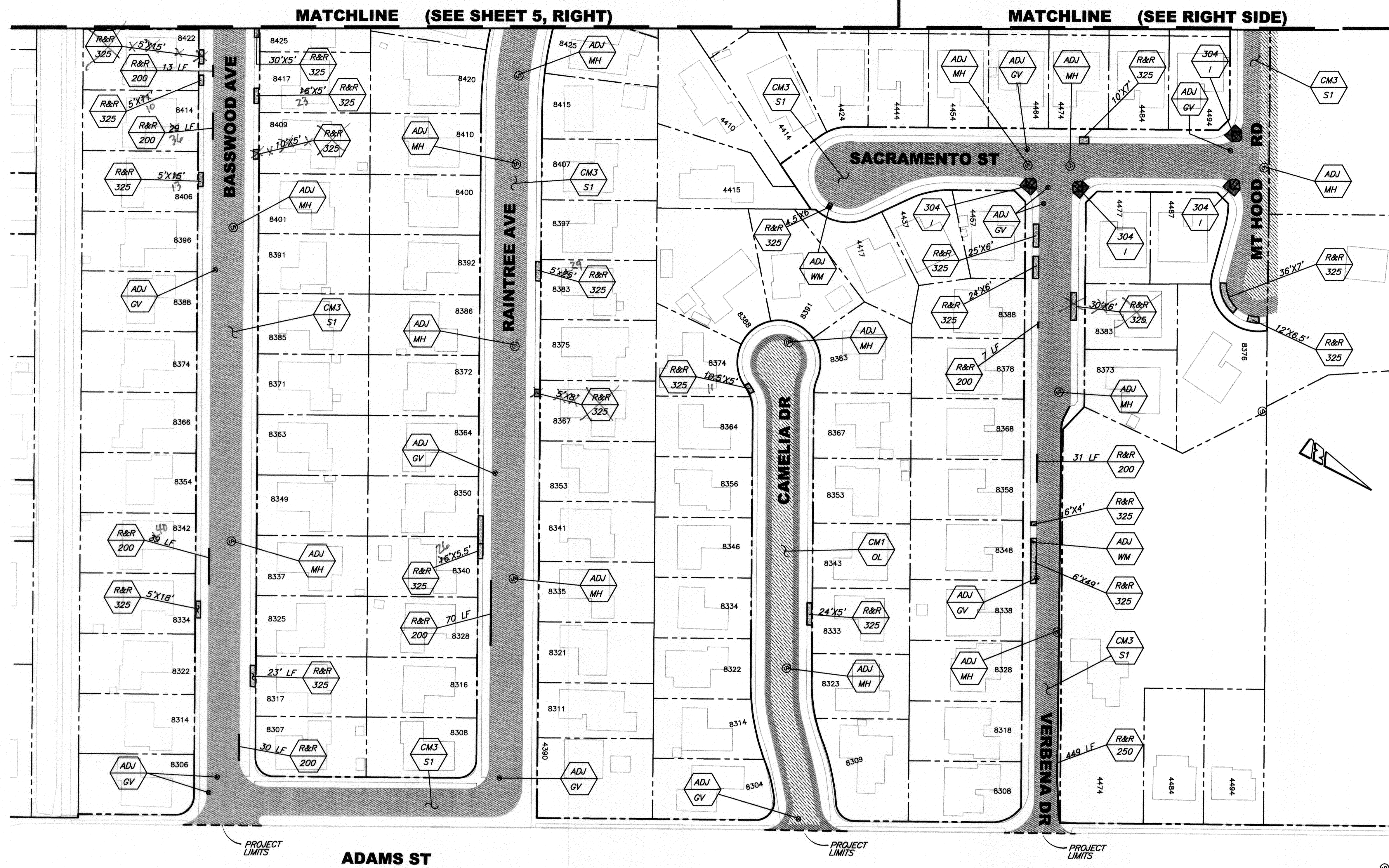
APPROVED BY	BY	DATE	APPROVED BY
ENGINEERING MANAGER	EM	10-26-11	[Signature]
CONSTRUCTION ADMIN.	DC	10-26-11	CITY ENGINEER
TRAFFIC DIVISION	[Signature]	10-26-11	
PRINCIPAL ENGINEER			DATE <u>10/27/11</u>

STREET IMPROVEMENTS
MINOR STREETS MAINTENANCE
 2011/2012 - PHASE 1
LOCATION NO. 2
(STRONG ST, FAIRMONT-ORANGE)
 HORIZ. SCALE: 1"=60' VERT. SCALE: NA

DESIGN WORK ORDER NO: 1205375
 CONSTR. WORK ORDER NO: 1205386
R-4221
 SHEET 4 OF 7
 FILE NAME: R4221-04.DWG

AS-BUILT 10-26-11 DC

INDEXED 6-13-12 BM



Under Ground Service Alert of Southern California
 Call: TOLL FREE 1-800-227-2600
 TWO WORKING DAYS BEFORE YOU DIG

ENGINEER IN RESPONSIBLE CHARGE
Edward Jara
 Name: Edward Jara
 R.C.E. No. 63753 EXPIRES: 9-30-12
 DATE: October 24, 2011

MARK	REVISIONS	APPR. DATE

CITY OF RIVERSIDE, CALIFORNIA
DEPARTMENT OF PUBLIC WORKS

APPROVED BY	BY	DATE	APPROVED BY	DATE
ENGINEERING MANAGER	<i>F.M.</i>	10/26/11	<i>[Signature]</i>	10/27/11
CONSTRUCTION ADMIN.	<i>D.C.</i>	10/26/11	CITY ENGINEER	
TRAFFIC DIVISION	<i>T.U.</i>	10-26-11		
PRINCIPAL ENGINEER				

DESIGNED BY: JC DRAWN BY: JC CHECKED BY: EL

STREET IMPROVEMENTS
MINOR STREETS MAINTENANCE
 2011/2012 - PHASE 1
LOCATION NO. 3
(SNOWBERRY ST TO ADAMS ST)

DESIGN WORK ORDER NO.: 1205375
 CONSTR. WORK ORDER NO.: 1205396

R-4221

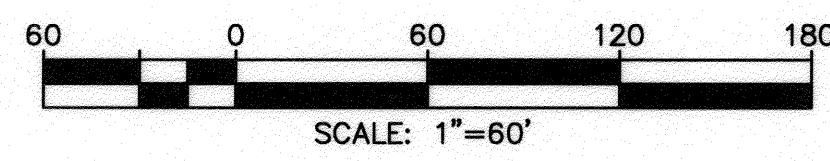
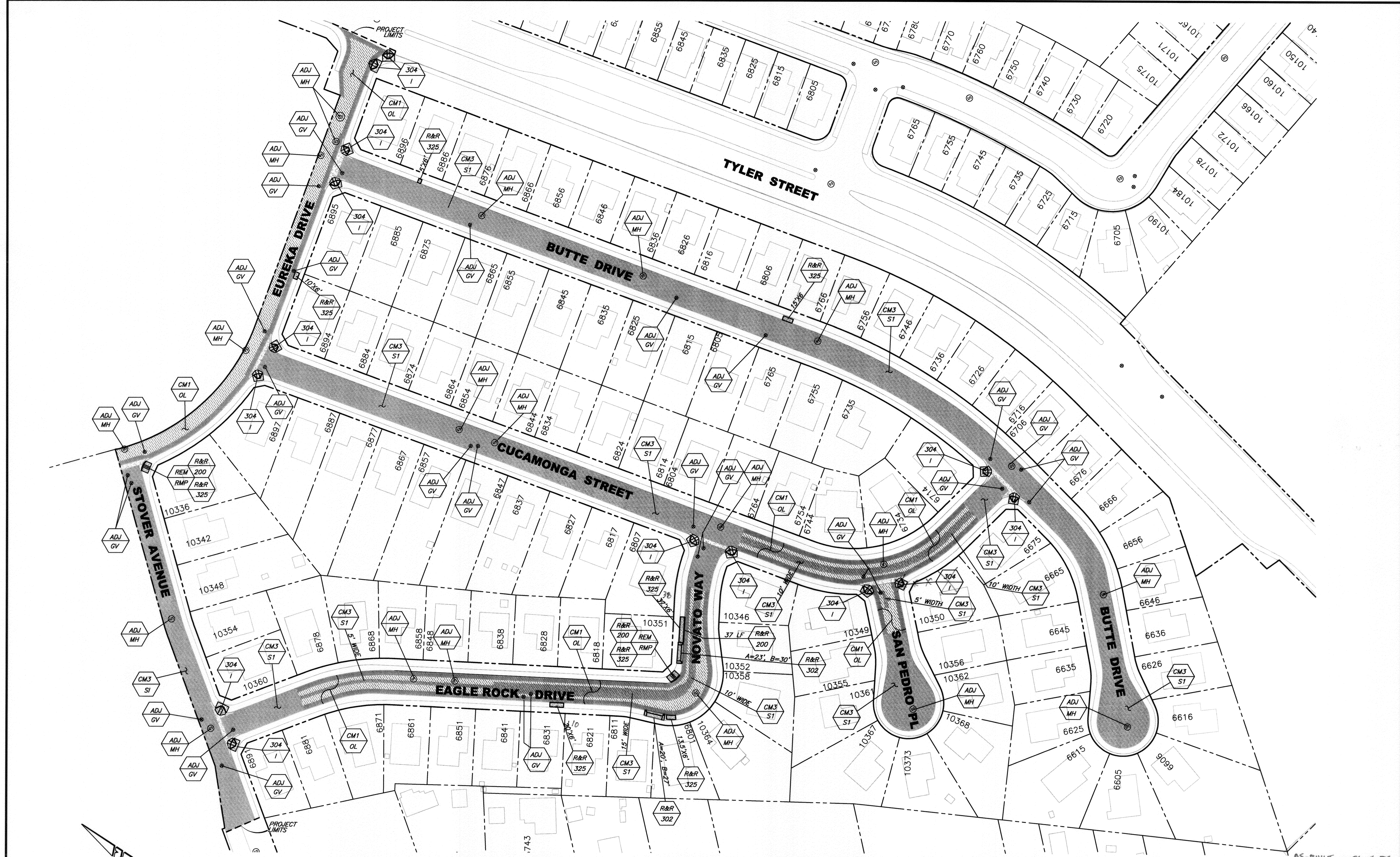
SHEET **6** OF **7**

FILE NAME: R4221-06.DWG

HORIZ. SCALE: 1"=60' VERT. SCALE: NA

AS-BUILT 10-26-11 JC

INDEXED 6-13-12 BM



Under Ground Service Alert of Southern California
Call: TOLL FREE 1-800-227-2600
TWO WORKING DAYS BEFORE YOU DIG

ENGINEER IN RESPONSIBLE CHARGE
Edward Lora
Name: Edward Lora
R.C.E. No. 63753 EXPIRES: 9-30-12
DATE: October 24, 2011

MARK	REVISIONS	APPR.	DATE

DESIGNED BY: JC DRAWN BY: JC CHECKED BY: EL

CITY OF RIVERSIDE, CALIFORNIA
DEPARTMENT OF PUBLIC WORKS

APPROVED BY	BY	DATE	APPROVED BY
ENGINEERING MANAGER	Fm	10-26-11	<i>[Signature]</i>
CONSTRUCTION ADMIN.	DC	10-26-11	CITY ENGINEER
TRAFFIC DIVISION	DC	10-26-11	DATE: 10/27/11
PRINCIPAL ENGINEER			

STREET IMPROVEMENTS
MINOR STREETS MAINTENANCE
2011/2012 - PHASE 1
LOCATION NO. 4
(STOVER AVE TO TYLER ST)
HORIZ. SCALE: 1"=60' VERT. SCALE: NA

DESIGN WORK ORDER NO.: 1205375
CONSTR. WORK ORDER NO.: 1205386
R-4221
SHEET 7 OF 7
FILE NAME: R4221-04.DWG
INDEXED 6-13-12 BM