

### SHEET INDEX:

SHEET NO.	DESCRIPTION
1	COVER SHEET
2	MARLBOROUGH AVENUE AT ATLANTA AVENUE BLAINE STREET AT WATKINS DRIVE
3	OLD RANCH ROAD EAST FROM END TO GLORIETTA LANE GLORIETTA LANE FROM OLD RANCH ROAD TO GRAND AVENUE

## PUBLIC WORKS DEPARTMENT MISCELLANEOUS SIDEWALK IMPROVEMENTS AT VARIOUS LOCATIONS 2012/2013 - PHASE 1

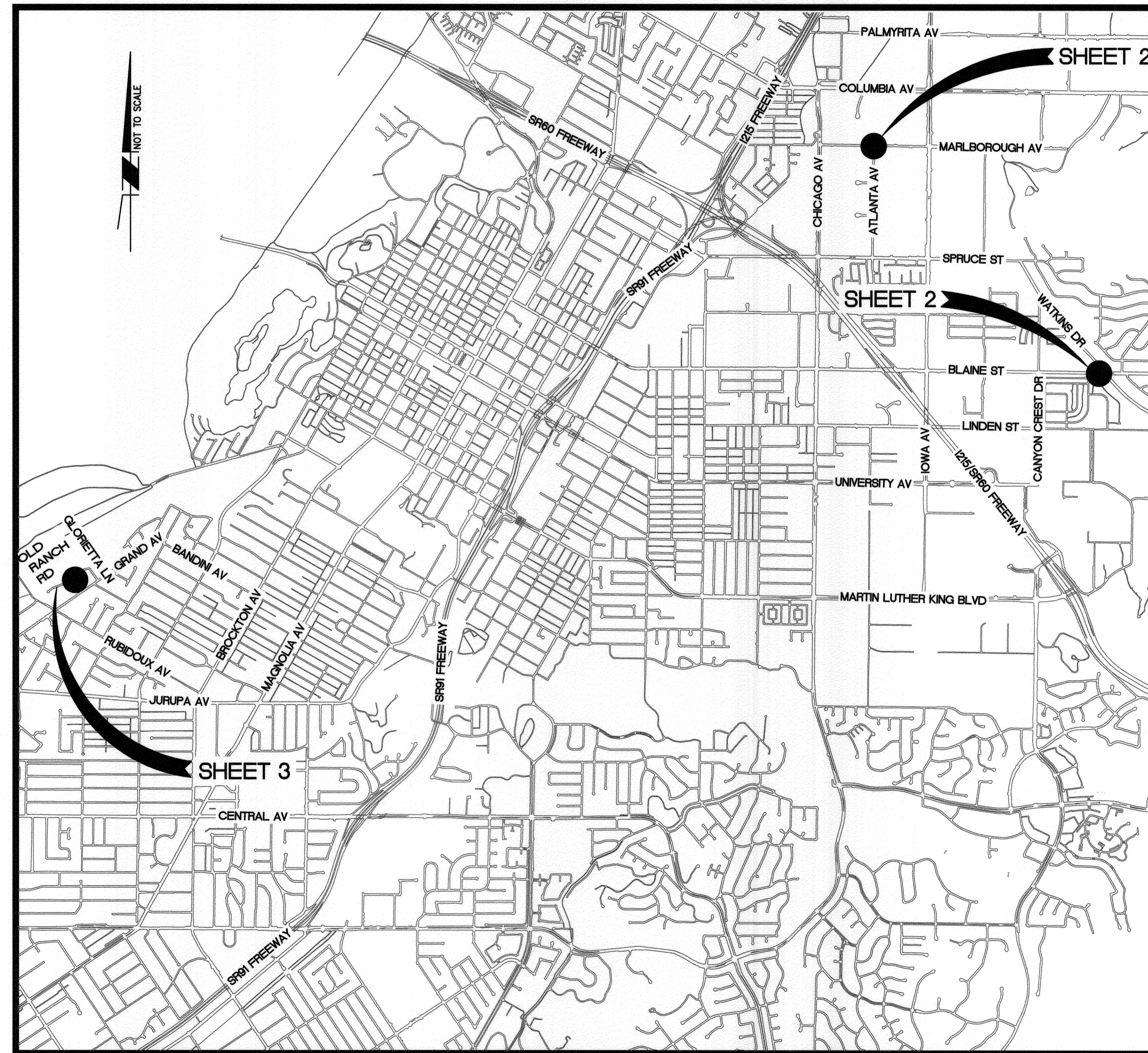
### SPECIFIC CONSTRUCTION NOTES:

- NUMBERS ABOVE 100 IN A HEXAGON ON THE PLAN REFER TO THE RESPECTIVE STANDARD DRAWING AND SHALL BE CONSTRUCTED ACCORDINGLY. UNLESS MODIFICATIONS ARE NOTED ON THE PLAN OR COVER SHEET. ANY NUMBER SHOWN BELOW THE STANDARD DRAWING NUMBER INDICATES THE SPECIFIC ALTERNATE TO BE CONSTRUCTED.
- CM II** COLD MILL EXISTING AC (5' WIDTH) AT A MIN. DEPTH OF 0.12' AND OVERLAY WITH NEW DGAC AT A MIN. DEPTH OF 0.12' AS SHOWN ON PLAN.
- PIP XX** PROTECT IN PLACE EXISTING FEATURE.  
XX= EXISTING ITEM TO BE PROTECT AS FOLLOWS: CB=CATCH BASIN; DC=DRAINAGE CULVERT; PLM=PALM TREE; DWY=DRIVEWAY; SW=SIDEWALK; SL=STREET LIGHT STANDARD; SGN=SIGN; UTL=UTILITY FACILITY (AS NOTED); MON=MONUMENT SIGN; RMP=WHEELCHAIR RAMP
- REL XX** RELOCATE EXISTING FACILITY. XX= EXISTING FACILITY AS FOLLOWS: SGN=SIGN; BNC=BUS STOP BENCH
- ADJ XX** ADJUST EXISTING FACILITY TO GRADE. XX= EXISTING FACILITY AS FOLLOWS: PB=PULLBOX; CBL=CABLE TV RISER OR PULLBOX
- R&R 200 I** REMOVE AND REPLACE EXISTING CURB AND GUTTER PER CITY STANDARD 200, TYPE I. CURB AND GUTTER DIMENSIONS TO MATCH EXISTING.
- R&R 302 XX** REMOVE AND REPLACE EXISTING DRIVEWAY APPROACH PER CITY STANDARD 302. XX= TYPE OF DRIVEWAY INDICATED AS FOLLOWS:  
CB-1= CURB TYPE I  
PL-1= PROPERTY LINE TYPE I
- 304 M1** CONSTRUCT WHEELCHAIR RAMP PER CITY STANDARD 304, MODIFIED. MODIFICATIONS ARE AS FOLLOWS:  
- CONSTRUCT TYPE II RAMP WITH RETAINING CURB ON ONE SIDE ONLY AS INDICATED ON PLAN.
- 325 XX** CONSTRUCT PCC SIDEWALK PER CITY STANDARD 325.  
CRB = CURB SIDE SIDEWALK  
PL = PROPERTY LINE SIDEWALK  
M1 = MODIFIED TO PROVIDE A THICKNESS OF 6" ADJACENT TO EXISTING DRIVEWAY APPROACH.
- 405 M1** SAWCUT AND REMOVE THE TOP 24" OF THE EXISTING CATCH BASIN. PROTECT IN PLACE THE EXISTING 24" R.C.P. CONNECTION, "V" DEPTH = 48". DOWEL INTO EXISTING BOX WALLS. INSTALL REBAR AND CONSTRUCT NEW CATCH BASIN TOP PER CITY STANDARD 405 WITH CURB AND GUTTER.
- 410 6'** CONSTRUCT NEW PCC PARKWAY DRAIN PER CITY STANDARD 410, TYPE 2, S=72". JOIN EXISTING OPEN CHANNEL WHERE BACK OF WALK INTERSECTS EASTERLY SIDE OPEN CHANNEL. RECONSTRUCT WESTERLY SIDE OF OPEN CHANNEL TO MATCH NEW PARKWAY DRAIN OPENING.
- 1 INSTALL 12" SOLID WHITE STRIPE (THERMOPLASTIC). SANDBLAST ANY CONFLICTING STRIPING WITHIN THE PROPOSED CROSSWALK.
- 2 STRAP MOUNT (1) W11-2 AND (1) W16-7p TO THE EXISTING STREET LIGHT STANDARD.
- 3 INSTALL (1) W11-2 AND (1) W16-7p ON A NEW POST
- 4 NEW LOCATION FOR THE RELOCATED BUS STOP BENCH AND BUS STOP SIGN WITH POST.
- 5 PAINT NEW RED CURB (115') WITH WHITE "BUS ZONE" STECLING. SANDBLAST THE EXISTING BUS ZONE RED CURB AT PREVIOUS LOCATION.
- 6 REMOVE THE EXISTING R30A(CA) AND STRAP MOUNT A NEW R30A(CA) MOD. (SEE BELOW) TO THE NEXT STREET LIGHT STANDARD EASTERLY FROM THIS POINT.



R30A(CA) MOD.

- 7 REFRESH THE EXISTING 12" SOLID WHITE LIMIT LINE AND "STOP" LEGEND. (THERMOPLASTIC) MATERIAL TO BE PLACED OVER EXISTING PAVEMENT MARKINGS.
- 8 REMOVE AND SALVAGE EXISTING R1-1, PROTECT IN PLACE THE POST. INSTALL NEW R1-1 ON EXISTING POST. REMOVE THE EXISTING STREET NAME SIGNS. INSTALL NEW STREET NAME SIGNS AND POST IN THE NEW PROPOSED LOCATION PER CITY STANDARD 662, AS NOTED ON PLAN.
- 9 PAINT NEW RED CURB (75') WITH WHITE "BUS ZONE" STECLING. SANDBLAST THE EXISTING BUS ZONE RED CURB AT PREVIOUS LOCATION.



● = PROJECT LOCATION

### LOCATION MAP/SHEET INDEX

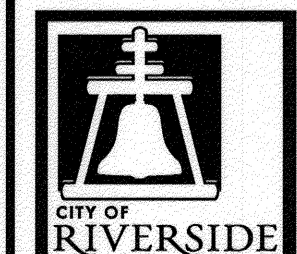
### GENERAL CONSTRUCTION NOTES:

1. THE CONTRACTOR SHALL PROVIDE AND MAINTAIN TRAFFIC AS INDICATED IN THE SPECIAL PROVISIONS AT ALL TIMES UNLESS PRIOR APPROVAL IN WRITING IS OBTAINED FROM THE DIRECTOR OF PUBLIC WORKS.
2. CONSTRUCTION SHALL BE IN ACCORDANCE WITH THE CITY OF RIVERSIDE STANDARD DRAWINGS AND STANDARD SPECIFICATIONS FOR PUBLIC WORKS CONSTRUCTION, 2009 EDITION.
3. EXISTING UTILITIES SHOWN ON THIS PLAN ARE PLOTTED FROM UTILITY RECORDS. THE CONTRACTOR IS REQUIRED TO TAKE DUE PRECAUTIONARY MEASURES TO LOCATE AND PROTECT ALL UTILITIES WHETHER OR NOT SHOWN ON THIS PLAN.
4. CONTRACTOR SHALL COORDINATE RELOCATION OF ALL CONFLICTING UTILITIES SHOWN WITHIN CONSTRUCTION AREA (IF APPLICABLE).
5. ALL STREET PULL BOXES, AFFECTED BY CONSTRUCTION, SHALL BE ADJUSTED TO THE PROPOSED GRADE.
6. PRIME CONTRACTOR BIDDING THIS WORK SHALL SATISFY THE LICENSE REQUIREMENTS INDICATED IN THE SPECIAL PROVISIONS.
7. MINIMIZE THE DAMAGE TO EXISTING LANDSCAPE AND MODIFY IRRIGATION TO RETAIN A FULLY OPERATIONAL IRRIGATION SYSTEM.

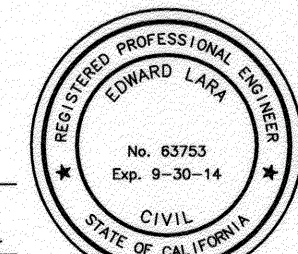
### MAINTENANCE LEGEND:

- NEW PCC SIDEWALK, CURB & GUTTER OR WHEELCHAIR RAMP
- COLD MILL 5' WIDE AT DEPTH OF 0.12' MIN. AND OVERLAY WITH DGAC AT 0.12' DEPTH MIN.

Under Ground Service Alert of Southern California  
Call: TOLL FREE 1-800-227-2600  
TWO WORKING DAYS BEFORE YOU DIG



**ENGINEER IN RESPONSIBLE CHARGE**  
*Edward Lara*  
Edward Lara  
R.C.E. No. 63753 EXPIRES: 9-30-14  
DATE: September 5, 2012

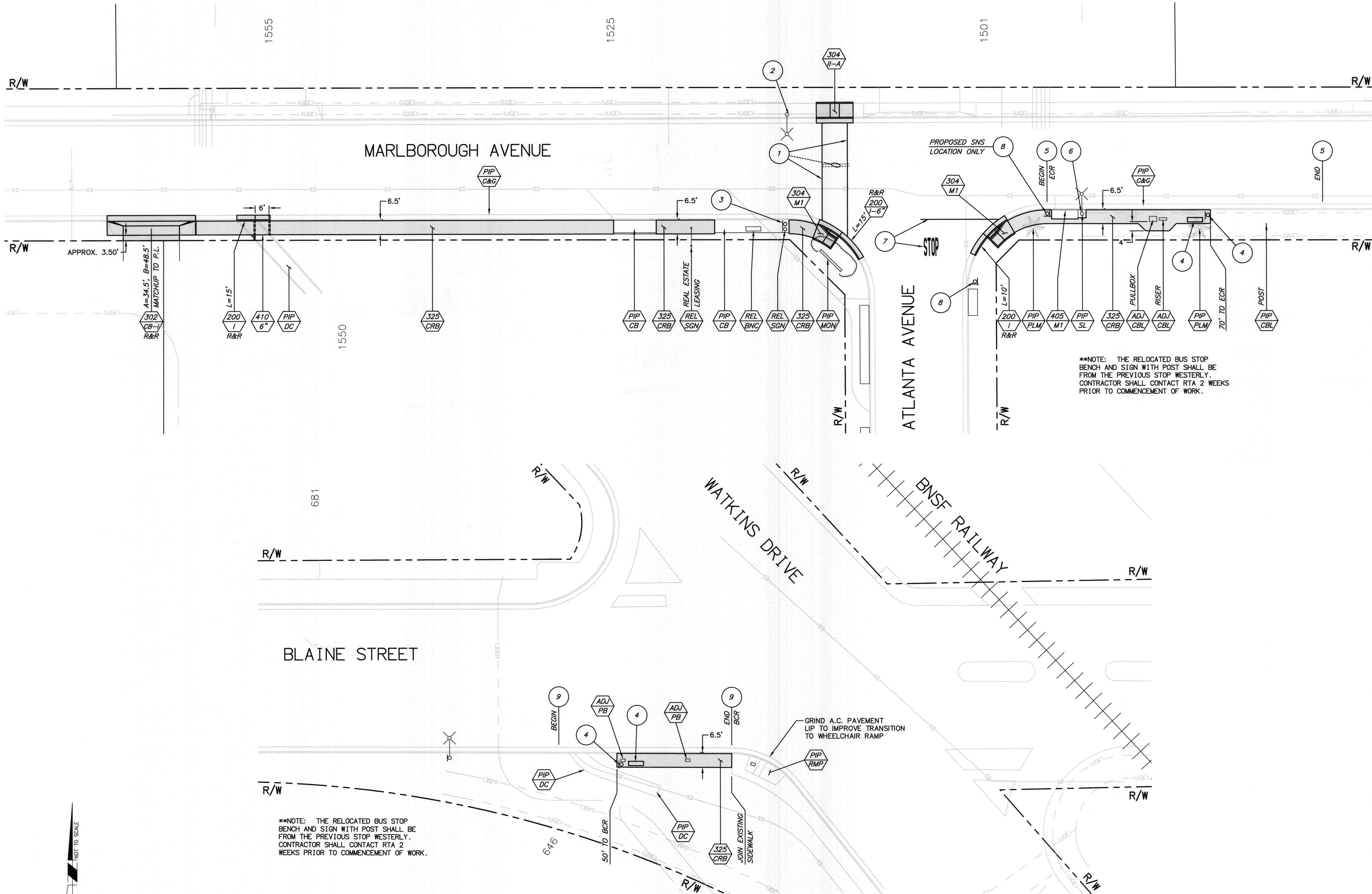


MARK	REVISIONS	APPR.	DATE

CITY OF RIVERSIDE, CALIFORNIA DEPARTMENT OF PUBLIC WORKS			
APPROVED BY	BY	DATE	APPROVED BY
ENGINEERING MANAGER	F.M.	9/5/12	<i>[Signature]</i>
CONSTRUCTION ADMIN.	DE	9/6/12	CITY ENGINEER
TRAFFIC DIVISION	J.H.	9/6/12	
STREETS			DATE: 9/20/2012

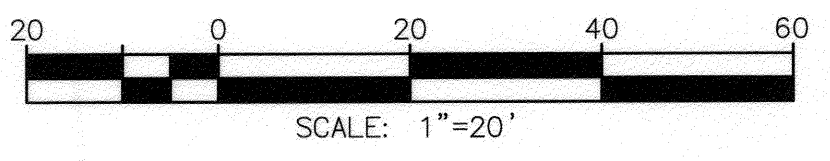
SIDEWALK IMPROVEMENTS MISCELLANEOUS SIDEWALK IMPROVEMENTS AT VARIOUS LOCATIONS 2012/2013 - PHASE 1	
<b>COVER SHEET</b>	
HORIZ. SCALE: N/A	VERT. SCALE: N/A

DESIGN WORK ORDER NO: 1303009	CONSTR. WORK ORDER NO: 1304553
<b>R-4249</b>	
SHEET <b>1</b> OF <b>3</b>	
FILE NAME: R4249-01.DWG	

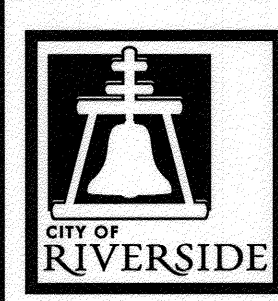


\*\*NOTE: THE RELOCATED BUS STOP BENCH AND SIGN WITH POST SHALL BE FROM THE PREVIOUS STOP WESTERLY. CONTRACTOR SHALL CONTACT RTA 2 WEEKS PRIOR TO COMMENCEMENT OF WORK.

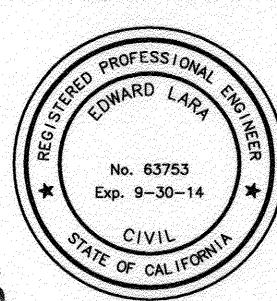
\*\*NOTE: THE RELOCATED BUS STOP BENCH AND SIGN WITH POST SHALL BE FROM THE PREVIOUS STOP WESTERLY. CONTRACTOR SHALL CONTACT RTA 2 WEEKS PRIOR TO COMMENCEMENT OF WORK.



Under Ground Service Alert of Southern California  
Call: TOLL FREE 1-800 227-2600  
TWO WORKING DAYS BEFORE YOU DIG



**ENGINEER IN RESPONSIBLE CHARGE**  
*Edward Lara*  
Edward Lara  
R.C.E. No. 63753 EXPIRES: 9-30-14  
DATE: September 5, 2012



MARK	REVISIONS	APPR.	DATE

DESIGNED BY: DMC DRAWN BY: DMC CHECKED BY: EL

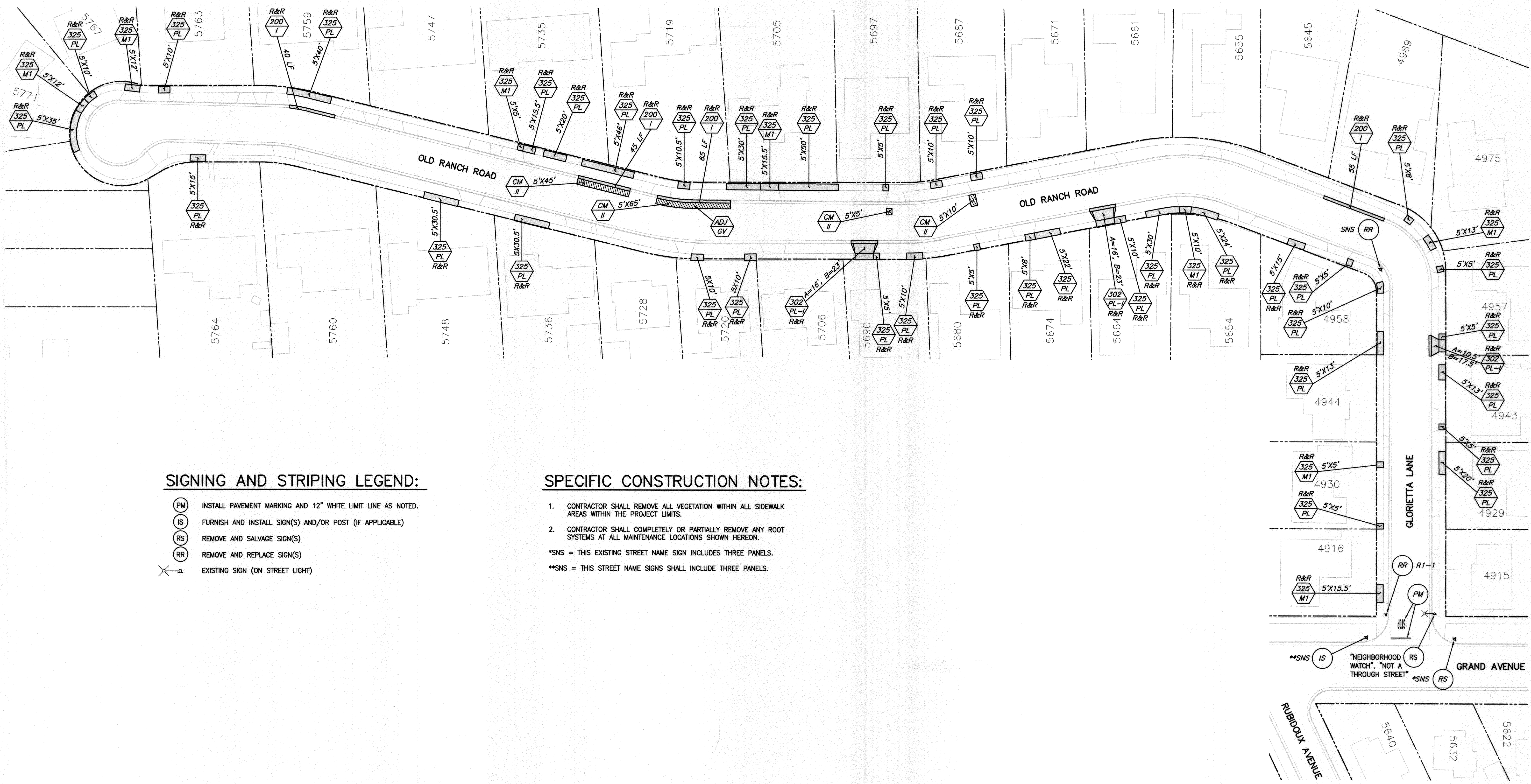
**CITY OF RIVERSIDE, CALIFORNIA  
DEPARTMENT OF PUBLIC WORKS**

APPROVED BY	BY	DATE	APPROVED BY
ENGINEERING MANAGER	F.M.	9/5/12	<i>[Signature]</i>
CONSTRUCTION ADMIN.	D.B.	9/6/12	CITY ENGINEER
TRAFFIC DIVISION	A.H.	9-6-12	DATE: 9/20/2012
STREETS			

**SIDEWALK IMPROVEMENTS  
MISCELLANEOUS SIDEWALK  
IMPROVEMENTS  
AT VARIOUS LOCATIONS  
2012/2013 - PHASE 1  
MARLBOROUGH AT ATLANTA/BLAINE AT WATKINS**

HORIZ. SCALE: 1"=20' VERT. SCALE: N/A

DESIGN WORK ORDER NO.: 1303000  
CONSTR. WORK ORDER NO.: 1304553  
**R-4249**  
SHEET **2** OF **3**  
FILE NAME: R4249-02.DWG

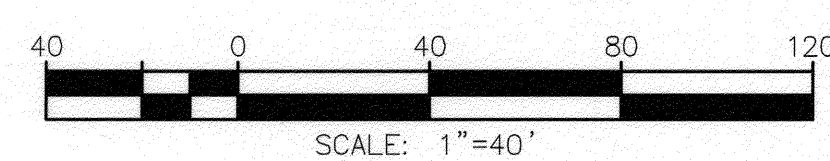
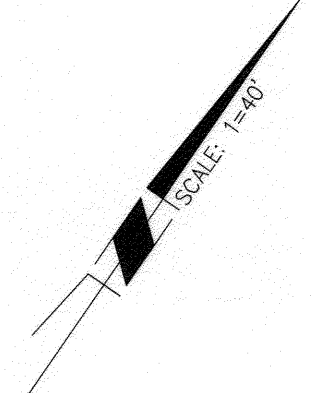


**SIGNING AND STRIPING LEGEND:**

- (PM) INSTALL PAVEMENT MARKING AND 12" WHITE LIMIT LINE AS NOTED.
- (IS) FURNISH AND INSTALL SIGN(S) AND/OR POST (IF APPLICABLE)
- (RS) REMOVE AND SALVAGE SIGN(S)
- (RR) REMOVE AND REPLACE SIGN(S)
- (X) EXISTING SIGN (ON STREET LIGHT)

**SPECIFIC CONSTRUCTION NOTES:**

1. CONTRACTOR SHALL REMOVE ALL VEGETATION WITHIN ALL SIDEWALK AREAS WITHIN THE PROJECT LIMITS.
  2. CONTRACTOR SHALL COMPLETELY OR PARTIALLY REMOVE ANY ROOT SYSTEMS AT ALL MAINTENANCE LOCATIONS SHOWN HEREON.
- \*SNS = THIS EXISTING STREET NAME SIGN INCLUDES THREE PANELS.  
 \*\*SNS = THIS STREET NAME SIGNS SHALL INCLUDE THREE PANELS.



Under Ground Service Alert of Southern California  
 Call: TOLL FREE 1-800-227-2600  
 TWO WORKING DAYS BEFORE YOU DIG

**ENGINEER IN RESPONSIBLE CHARGE**  
 Edward Lara  
 R.C.E. No. 63753 EXPIRES: 9-30-14  
 DATE: September 5, 2012

MARK	REVISIONS	APPR.	DATE

**CITY OF RIVERSIDE, CALIFORNIA  
 DEPARTMENT OF PUBLIC WORKS**

APPROVED BY	BY	DATE	APPROVED BY
ENGINEERING MANAGER	F.M.	9/5/12	[Signature]
CONSTRUCTION ADMIN.	S.H.	9/6/12	CITY ENGINEER
TRAFFIC DIVISION	S.H.	9-6-12	DATE: 9/10/2012
STREETS			

**SIDEWALK IMPROVEMENTS  
 MISCELLANEOUS SIDEWALK IMPROVEMENTS  
 AT VARIOUS LOCATIONS  
 2012/2013 - PHASE 1  
 OLD RANCH ROAD/GLORIETTA LANE**

DESIGN WORK ORDER NO.: 1303000  
 CONSTR. WORK ORDER NO.: 1304553  
**R-4249**  
 SHEET **3** OF **3**  
 FILE NAME: R4249-03.DWG

HORIZ. SCALE: 1"=40' VERT. SCALE: N/A