

TABLE

REVISIONS

NO.	DATE	DESCRIPTION
1		
2		
3		
4		
5		
6		
7		
8		
9		
10		

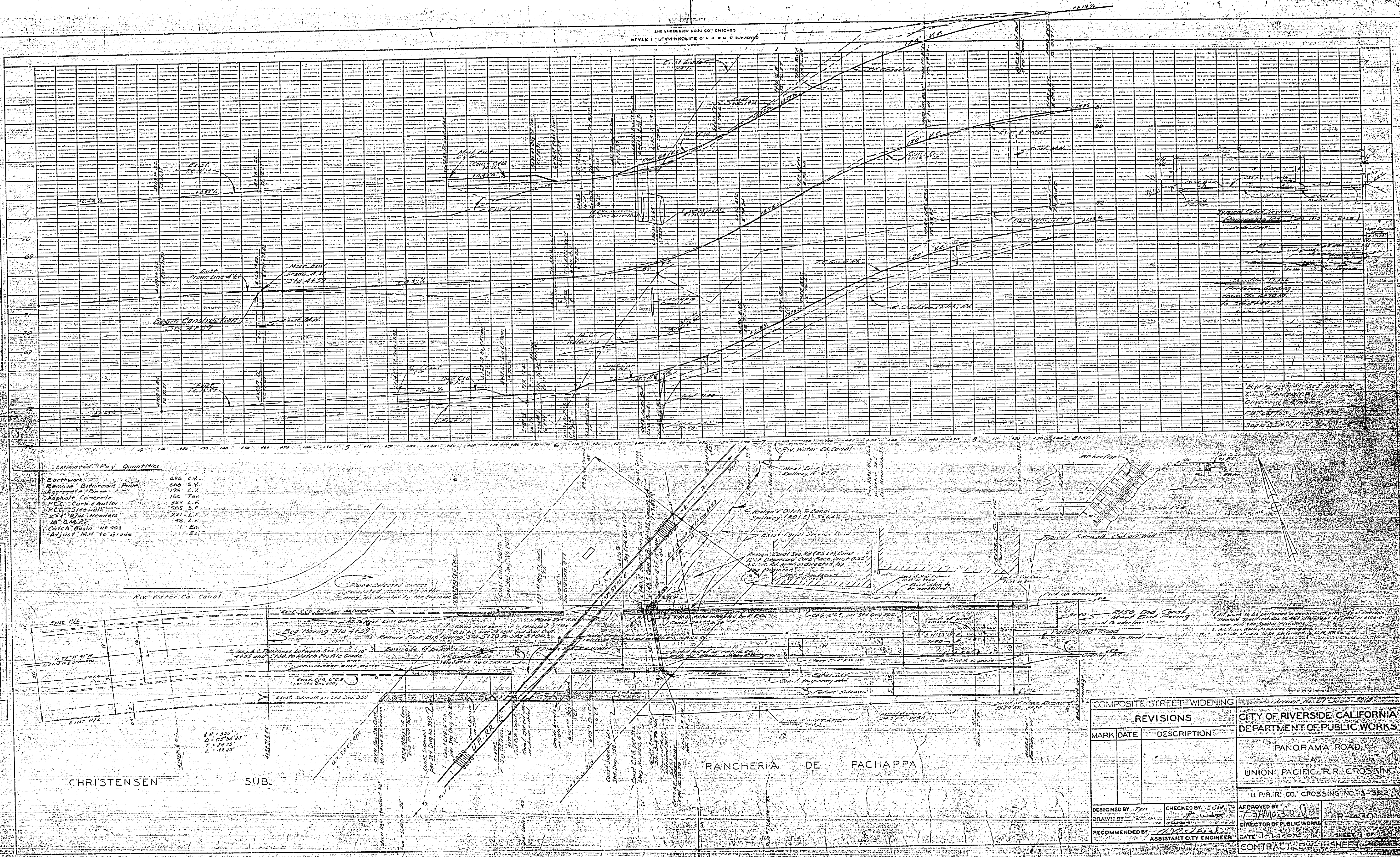
TABLE

REVISIONS

NO.	DATE	DESCRIPTION
1		
2		
3		
4		
5		
6		
7		
8		
9		
10		

Estimated Pay Quantities

Earthwork	696 C.Y.
Remove Bituminous Road	666 S.Y.
Asphaltic Base	178 C.Y.
Asphalt Concrete	150 Ton
P.C.C. Curb & Gutter	329 L.F.
P.C.C. Sidewalk	585 S.F.
24" R.W. Manholes	22 L.F.
18" C.M.P.	48 L.F.
Catch Basin No 405	1 Ea.
Adjust M.M. to grade	1 Ea.



COMPOSITE STREET WIDENING		CITY OF RIVERSIDE, CALIFORNIA DEPARTMENT OF PUBLIC WORKS	
REVISIONS		PANORAMA ROAD	
MARK	DATE	DESCRIPTION	AT UNION PACIFIC R.R. CROSSING
			U. P. R. R. CO. CROSSING NO. 1-352
DESIGNED BY	CHECKED BY	APPROVED BY	
DRAWN BY			
RECOMMENDED BY	ASSISTANT CITY ENGINEER	DIRECTOR OF PUBLIC WORKS	
		DATE	SHEET