

# STREET IMPROVEMENT PLANS FOR: TRACT No. 34236

### STREET CONSTRUCTION GENERAL NOTES

1. NO PERSON SHALL PERFORM ANY CONSTRUCTION ACTIVITY OR INSTALL ANY OBJECTS WITHIN THE PUBLIC RIGHT-OF-WAY OR EASEMENTS OF THE CITY OF RIVERSIDE WITHOUT A VALID CONSTRUCTION PERMIT OR, A STREET OPENING PERMIT OR AN ENCROACHMENT PERMIT ISSUED BY THE CITY'S PUBLIC WORKS DEPARTMENT.
2. IT SHALL BE THE RESPONSIBILITY OF THE CONTRACTOR TO CLEAR THE RIGHT OF WAY IN ACCORDANCE WITH THE PROVISIONS OF LAW AS IT AFFECTS EACH UTILITY INCLUDING IRRIGATION LINES AND APPURTENANCES AND AT NO COST TO THE CITY.
3. CONSTRUCTION SHALL BE IN ACCORDANCE WITH THE CITY OF RIVERSIDE DEPARTMENT OF PUBLIC WORKS, STANDARD DRAWINGS, ITS SUPPLEMENTAL NOTES AND THE STANDARD SPECIFICATIONS FOR PUBLIC WORKS CONSTRUCTION, CURRENT EDITION.
4. THE PRIVATE ENGINEER SIGNING THESE PLANS IS RESPONSIBLE FOR ASSURING THE ACCURACY AND ACCEPTABILITY OF THE WORK HEREON. IN THE EVENT OF DISCREPANCIES ARISING DURING CONSTRUCTION, THE PRIVATE ENGINEER SHALL BE RESPONSIBLE FOR DETERMINING AN ACCEPTABLE SOLUTION AND REVISING THE PLANS FOR APPROVAL BY THE CITY.
5. QUANTITIES SHOWN ARE FOR INFORMATION ONLY AND THE CITY OF RIVERSIDE IS NOT RESPONSIBLE FOR THEIR ACCURACY.
6. THE DEVELOPER SHALL BE RESPONSIBLE FOR PRESERVING OR REESTABLISHING AND REFERENCING SURVEY MONUMENTS DESTROYED, DISTURBED OR BURIED AS A RESULT OF CONSTRUCTION SHOWN HEREON.
7. THE CONTRACTOR SHALL COORDINATE TRENCHING FOR CABLE TELEVISION WITH OTHER TRENCHING WITHIN THE PROJECT.
8. ALL FLAGGED ELEVATIONS SHALL BE STAKED IN THE FIELD BY THE PRIVATE ENGINEER.
9. WHERE NEW PAVEMENT IS TO JOIN THE EXISTING PAVEMENT, EDGE OF THE EXISTING PAVEMENT SHALL BE TRIMMED IN A SMOOTH AND STRAIGHT LINE. CONSTRUCT MATCH-UP PAVING AS SHOWN ON THE PLANS AND OVERLAY PAVING AS DIRECTED IN THE FIELD TO PRODUCE A SMOOTH SECTION.
10. CONSTRUCT DRIVEWAY APPROACHES PER STANDARD DRAWING 302. EXACT SIZE AND LOCATION TO BE STAKED BY THE PRIVATE ENGINEER PRIOR TO CONSTRUCTION OF THE CURB AND GUTTER.
11. ON ALL AREAS WITHIN PUBLIC RIGHT OF WAY WHERE THE FILL IS ONE (1) FOOT OR GREATER, A LETTER WILL BE REQUIRED FROM THE SOILS ENGINEER, CERTIFYING THE COMPACTION OF THE FILL BELOW SUBGRADE, PRIOR TO ISSUANCE OF THE CONSTRUCTION PERMIT/CUT SHEETS.
12. ANY TRAFFIC CONTROL STRIPING OBLITERATED AND/OR BADLY WORN DURING CONSTRUCTION SHALL BE RESTORED BY CONTRACTOR WITHIN FIVE DAYS AFTER NOTIFICATION FROM THE CITY INSPECTORS.
13. FINAL STRIPING FOR TRAFFIC CONTROL AND/OR PAVEMENT MARKING TO BE THE RESPONSIBILITY OF THE DEVELOPER.
14. THE CONTRACTOR SHALL CALL IN A LOCATION REQUEST TO UNDERGROUND SERVICE ALERT (USA), PHONE # 1-800-227-2600, TWO WORKING DAYS BEFORE DIGGING. NO CONSTRUCTION PERMIT WILL BE ISSUED BY THE PUBLIC WORKS DEPARTMENT INVOLVING EXCAVATION FOR UNDERGROUND FACILITIES UNLESS THE APPLICANT HAS BEEN PROVIDED AN INQUIRY IDENTIFICATION NUMBER BY U.S.A.
15. IN PAVEMENT OVERLAY AREAS, ANY DISTRESSED EXISTING PAVEMENT SHALL BE REMOVED AND REPLACED AS DIRECTED BY THE INSPECTOR PRIOR TO OVERLAYING WITH A.C. PAVING.
16. THE SUBDIVIDER SHALL ARRANGE FOR A SOIL TEST TO BE MADE BY A SOILS ENGINEER AFTER THE STREETS HAVE BEEN PREPARED TO ROUGH GRADE AND PRIOR TO CURB AND GUTTER CONSTRUCTION. DEPTH OF BASE MATERIAL AND A.C. PAVING SHALL BE DETERMINED BY THE CITY OF RIVERSIDE DESIGN STANDARDS AND TEST PROCEDURES.
17. ALL TRAFFIC SIGNS SHALL BE INSTALLED PRIOR TO OPENING STREETS TO TRAFFIC.
18. SEE STREET LIGHT PLAN FOR QUANTITY AND LOCATION OF REQUIRED STREET LIGHTS.
19. ON ALL AREAS WITH PUBLIC RIGHT OF WAY WHERE THE FILL IS ONE (1) FOOT OR GREATER, A LETTER WILL BE REQUIRED FROM THE SOILS ENGINEER, CERTIFYING THE COMPACTION OF THE FILL BELOW SUBGRADE, PRIOR TO ISSUANCE OF THE CONSTRUCTION PERMIT/CUT SHEETS.

### CONSTRUCTION NOTES AND QUANTITY ESTIMATE - STREET

THE QUANTITIES SHOWN BELOW ARE FOR BONDING INFORMATION ONLY. THE CONTRACTOR IS TO CONSTRUCT PROJECT PER THESE PLANS AND SUBMIT CONSTRUCTION BID BASED ON THEIR OWN QUANTITY "TAKE-OFF".

- ① PLACE A.C. OVER C.A.B. PER PAVEMENT NOTE BELOW . . . . . 27,922 SF.
- ② CONSTRUCT 6" CURB & GUTTER PER CITY STD. DWG. NO. 200 (TYPE I) . . . . . 1,175 LF.
- ③ CONSTRUCT 6" CURB ONLY PER CITY STD. DWG. NO. 200 (TYPE I) . . . . . 152 LF.
- ④ GRIND AND OVERLAY (1" MIN.) PAVING AS REQUIRED TO CREATE . . . . . 7,633 SF. A SMOOTH TRANSITION.
- ⑤ CONSTRUCT CROSS GUTTER PER CITY STD. DWG. NO. 220 (W=6") . . . . . 1,144 SF.
- ⑥ CONSTRUCT DRIVEWAY APPROACH PER CITY STD. DWG. NO. 302 (TYPE PL-I) . . . . . 7 EA.
- ⑦ CONSTRUCT PROPERTY LINE SIDEWALK PER CITY STD. DWG. NO. 325 . . . . . 4,165 LF.
- ⑧ CONSTRUCT CURB LINE SIDEWALK PER CITY STD. DWG. NO. 325 . . . . . 2,276 LF.
- ⑨ CONSTRUCT WHEELCHAIR RAMP PER CITY OF RIVERSIDE STD. DWG. NO. 304 (TYPE I) . . . . . 2 EA.
- ⑩ INSTALL ENTRY GATE PER SEPARATE PLAN . . . . . 1 EA.
- ⑪ CONSTRUCT CATCH BASIN PER CITY STD. DWG. NO. 405 (W=15') . . . . . 2 EA.
- ⑫ CONSTRUCT UNDER SIDEWALK DRAIN PER CITY STD. DWG. NO. 410 OR APWA 150-3. . . . . 8 EA.
- ⑬ SAW CUT, JOIN EXISTING PAVING PER DETAIL HEREON. . . . . 550 LF.

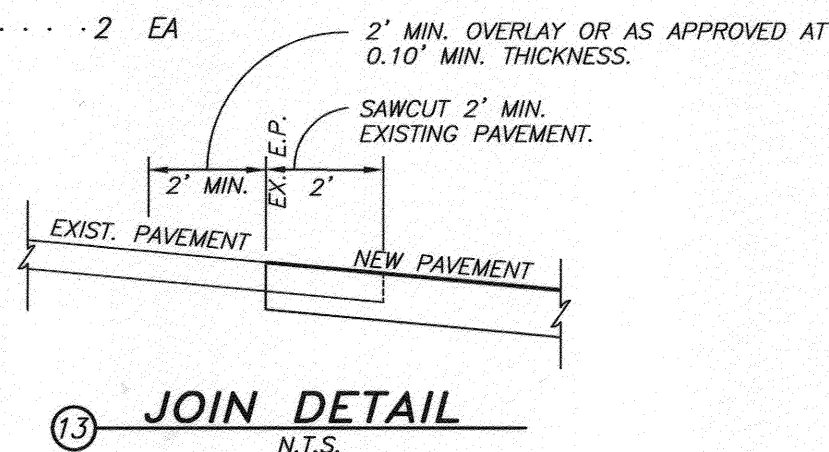
### CONSTRUCTION NOTES AND QUANTITY ESTIMATE - STORM DRAIN

THE QUANTITIES SHOWN BELOW ARE FOR BONDING INFORMATION ONLY. THE CONTRACTOR IS TO CONSTRUCT PROJECT PER THESE PLANS AND SUBMIT CONSTRUCTION BID BASED ON THEIR OWN QUANTITY "TAKE-OFF".

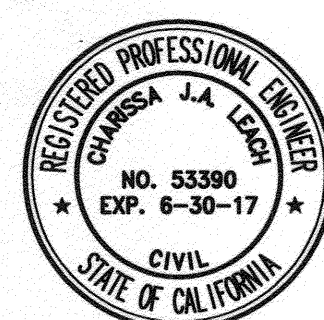
- ② INSTALL 36" HDPE PIPE - SMOOTH INTERIOR LINER CASE II BEDDING PER CITY . . . . . 272 LF STD. DWG. NO. 452
- ③ INSTALL 18" HDPE PIPE - SMOOTH INTERIOR LINER CASE II BEDDING PER CITY . . . . . 130 LF STD. DWG. NO. 452
- ④ CONSTRUCT MANHOLE AX PER CITY STD. DWG. NO. 430 . . . . . 1 EA
- ⑤ CONSTRUCT JUNCTION STRUCTURE C PER CITY STD. DWG. NO. 422 . . . . . 2 EA
- ⑥ CONSTRUCT 15' WIDE CATCH BASIN PER CITY STD. DWG. NO. 405 . . . . . 2 EA
- ⑦ CONSTRUCT GRATING CATCH BASIN PER A.P.W.A. STD. DWG. NO. 304-2 (2'x4') . . . . . 2 EA
- ⑧ CONSTRUCT HEADWALL AND TRASH RACK PER DETAIL ON SHEET 5 . . . . . 1 EA
- ⑨ CONSTRUCT CONCRETE COLLAR PER CITY STD. NO. 424 . . . . . 1 EA
- ⑩ CONSTRUCT 18"x18" DROP INLET WITH TRAFFIC RATED LID . . . . . 2 EA

PAVEMENT NOTE		
INDIANA AVENUE	" A.C.	" C.A.B.
SHANDELL COURT	" A.C.	" C.A.B.

NOTE: VALUES WILL BE PROVIDED BY GEOTECHNICAL ENGINEER WHEN ROUGH GRADE HAS BEEN COMPLETED



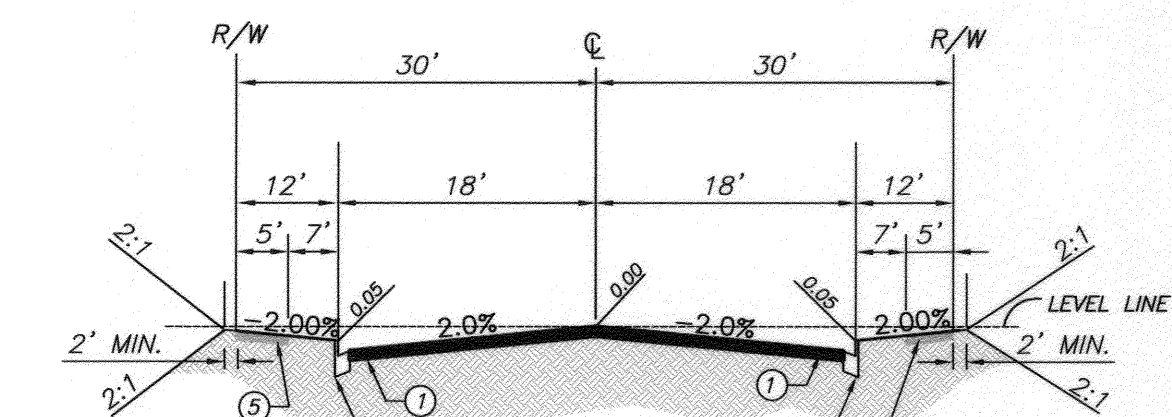
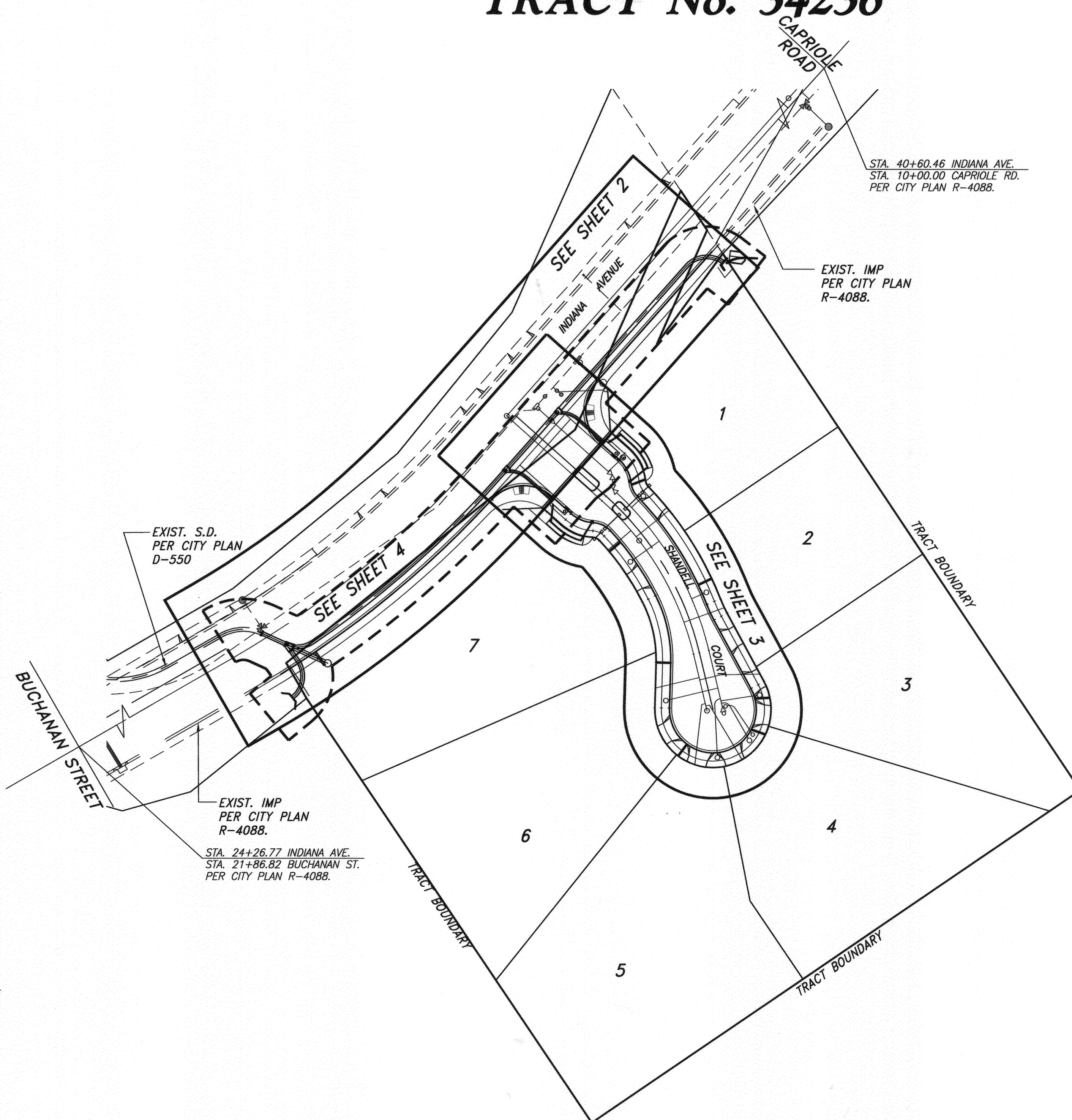
⑬ JOIN DETAIL N.T.S.



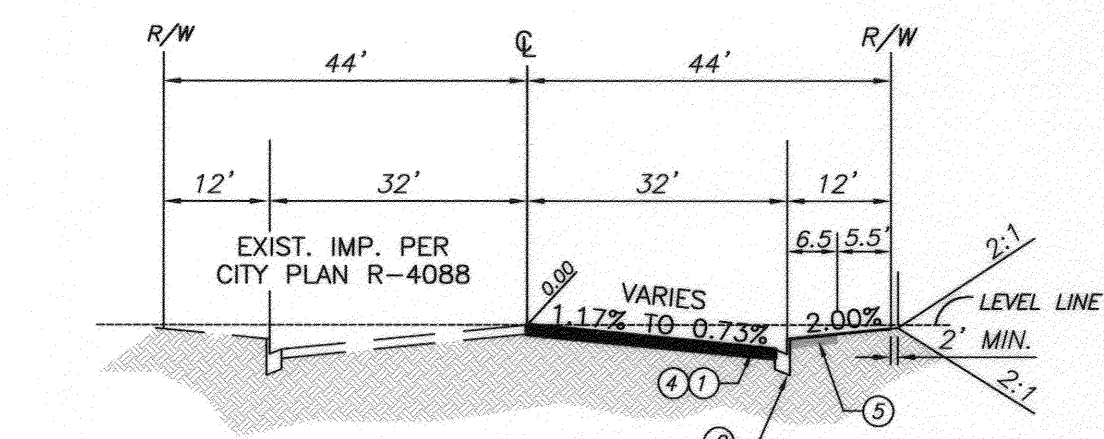
**INDEX MAP**  
SCALE 1" = 150'

STREET SIGN SCHEDULE	
①	INDIANA AVENUE 12200
②	SHANDELL COURT 3400
③	STOP SIGN
④	NO OUTLET

INSTALL SIGNS PER CITY OF RIVERSIDE STANDARD DRAWINGS #662, #664



**SHANDELL COURT  
(PRIVATE STREET)**  
TYPICAL STREET SECTION  
T.I.=5.0  
N.T.S.



**INDIANA AVENUE  
(PUBLIC STREET)**  
TYPICAL STREET SECTION  
T.I.=4.5  
N.T.S.

### SOILS ENGINEER

**SOIL EXPLORATION COMPANY, INC.**  
7535 JURUPA AVENUE, UNIT C  
RIVERSIDE, CALIFORNIA 92504  
TEL: 951 688-7200  
FAX: 951 688-7100

### REFERENCE DRAWINGS:

- R-3279
- R-4088
- S-2024
- S-2125
- D-550

### SHEET INDEX:

- SHEET 1 COVER SHEET, INDEX MAP
- SHEET 2 STREET IMPROVEMENT PLAN, INDIANA AVENUE
- SHEET 3 STREET IMPROVEMENT PLAN, SHANDELL COURT
- SHEET 4 STORM DRAIN PLAN
- SHEET 5 HEADWALL DETAIL SHEET

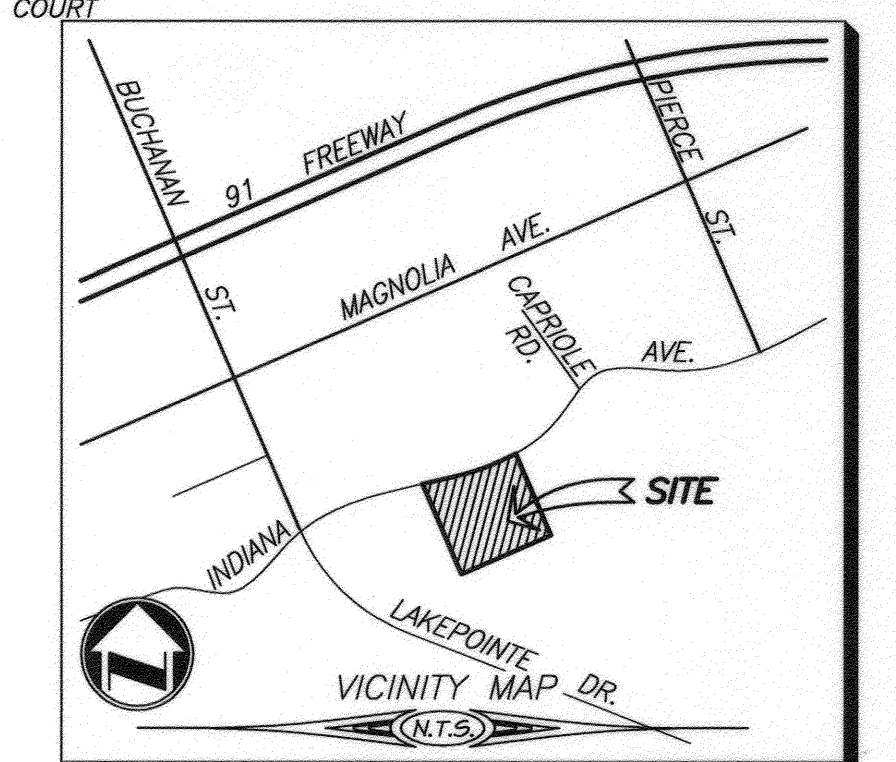
**WDID NO. 8 33C371485**

### LEGEND:

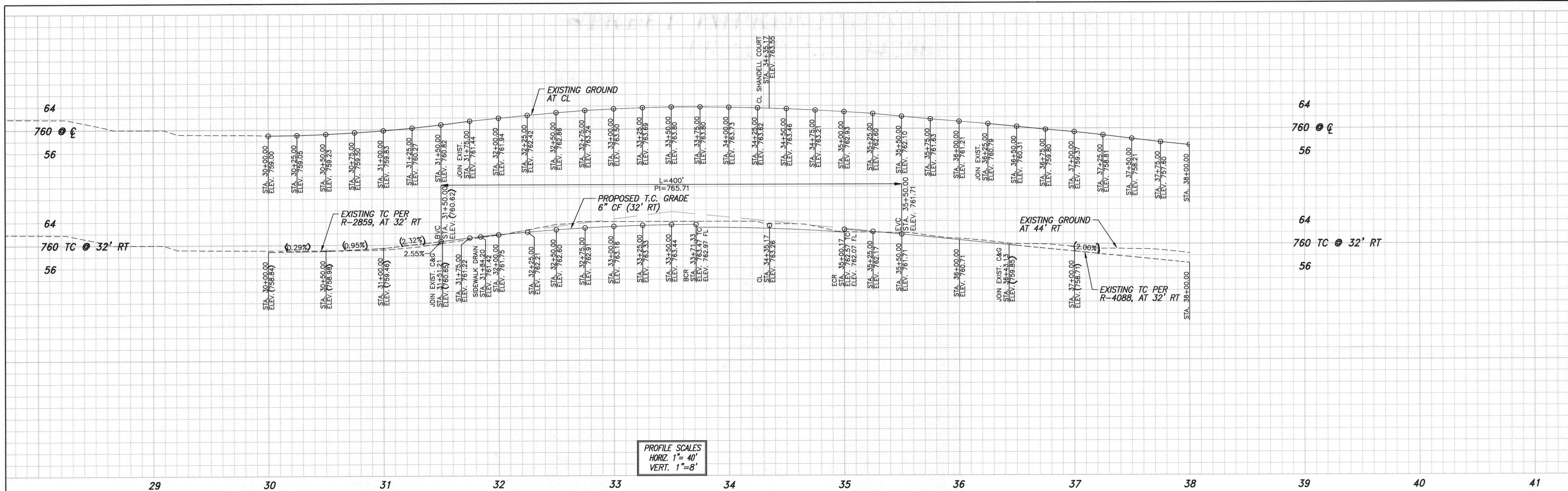
BLDG. BUILDING	GB GRADE BREAK	TC TOP OF CURB
CB CATCH BASIN	H.C. HANDICAPPED	TEL. TELEPHONE
CHLK CHAIN LINK FENCE	HP HIGH POINT	TC TOP OF GRATE
C&G CURB AND GUTTER	INV. INVERT OF PIPE	TF TOP OF FOOTING
C.L. CENTERLINE	LP LOW POINT	TW TOP OF WALL
CONC. CONCRETE	MH MAN HOLE	W WATER
D/W DRIVEWAY	P.P. POWER POLE	
EP EDGE OF PAVEMENT	R.D. ROOF DRAIN	
EXIST. EXISTING	R/W RIGHT-OF-WAY	
FF FINISHED FLOOR	SWR SEWER	
FH FIRE HYDRANT	S/W SIDEWALK	
FL FLOW LINE	SD STORM DRAIN	
FS FINISHED SURFACE	STD. STANDARD	
CITY CITY OF RIVERSIDE	MWD METROPOLITAN WATER DISTRICT	

### WATER DEPARTMENT NOTE:

1. DEVELOPER TO GIVE THE CITY WATER DIVISION FIVE (5) WORKING DAYS WRITTEN NOTICE PRIOR TO START OF CONSTRUCTION AND TO ALLOW THE CITY TEN (10) WORKING DAYS FOR THE COMPLETION OF THE WORK.



CITY OF RIVERSIDE PUBLIC UTILITIES WATER DEPARTMENT  REVIEWED FOR CONFLICTS BY: <i>[Signature]</i> DATE: <i>[Date]</i>	CITY OF RIVERSIDE PUBLIC UTILITIES ELECTRIC DEPARTMENT  REVIEWED FOR CONFLICTS BY: <i>[Signature]</i> DATE: <i>[Date]</i>		PLANS PREPARED BY: <b>adkan ENGINEERS</b> Civil Engineering - Surveying - Planning 6820 Airport Drive, Riverside, CA 92504 Tel: (951) 688-0241, Fax: (951) 688-0599  CHISELED SQUARE ON THE SOUTHEAST CORNER OF BUCHANAN WELL NO. 1 AT THE NORTHWEST CORNER OF MAGNOLIA AVENUE AND BUCHANAN STREET, ADJUSTED AND LEVELLED: MAY 1997.  DATUM: (NGVD 29) ELEVATION: 686.946	AS BUILT SD TIE-IN LOCATION REPLACED HEADWALL W/CB 110  DESIGNED BY: Rick DRAWN BY: Rick CHECKED BY: C-	<b>CITY OF RIVERSIDE</b> PUBLIC WORKS DEPARTMENT  APPROVED BY: <i>[Signature]</i> DATE: 11/15/16 ENGINEERING MANAGER CAPITAL PROJECTS TRAFFIC ENGINEERING DATE: 12-2-15	<b>STREET IMPROVEMENT PLAN</b> <b>TRACT 34236</b> COVER SHEET  APPROVED BY: <i>[Signature]</i> DATE: 11/15/16 CITY ENGINEER / PW DIRECTOR	<b>PW14-0086</b> ACCOUNT NO.  <b>R-4322</b> SHEET 1 OF 5  HORIZ. SCALE: AS NOTED VERT. SCALE: N/A J.N. 8518 FILE NAME: U:\Projects\Brett Karger\8518 TR 34236\Street Improvements\8518 st 01.dwg
---	--	--	--	--	--	--	--



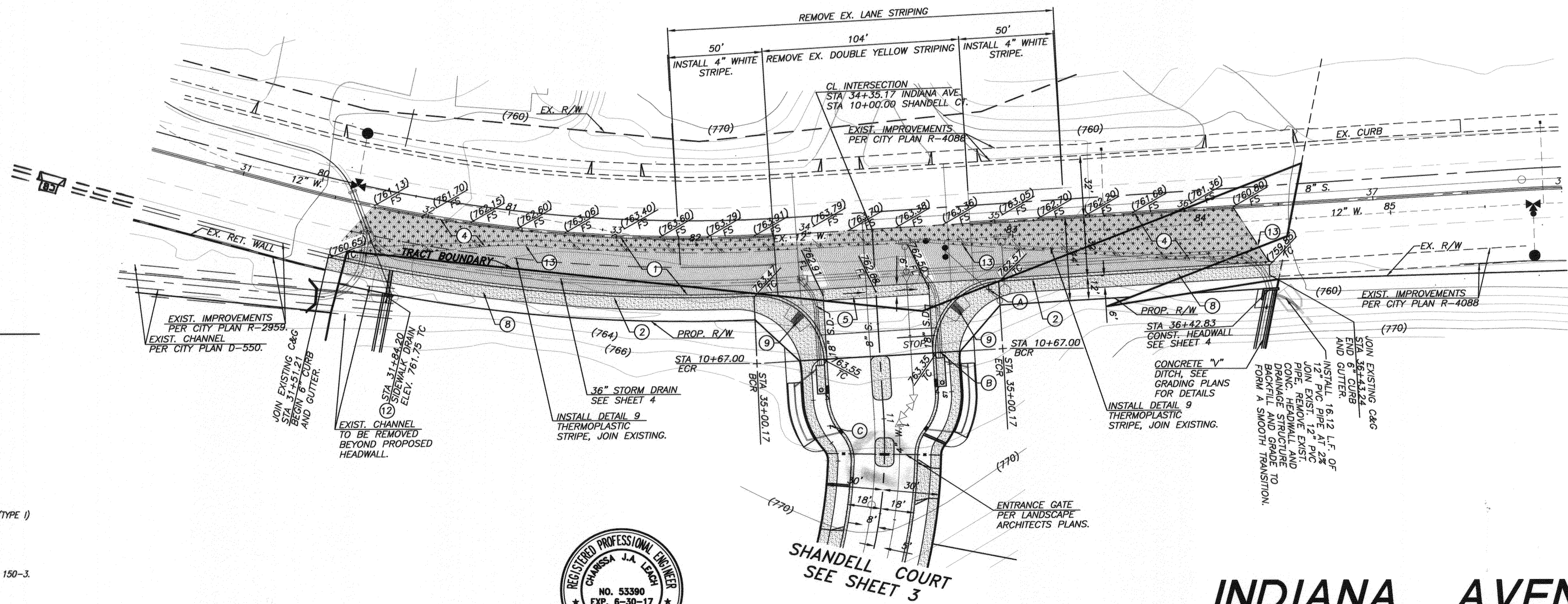
PROFILE SCALES  
 HORIZ. 1" = 40'  
 VERT. 1" = 8'

LINE	LENGTH	DIRECTION
L2	143.17'	N41°36'50"E

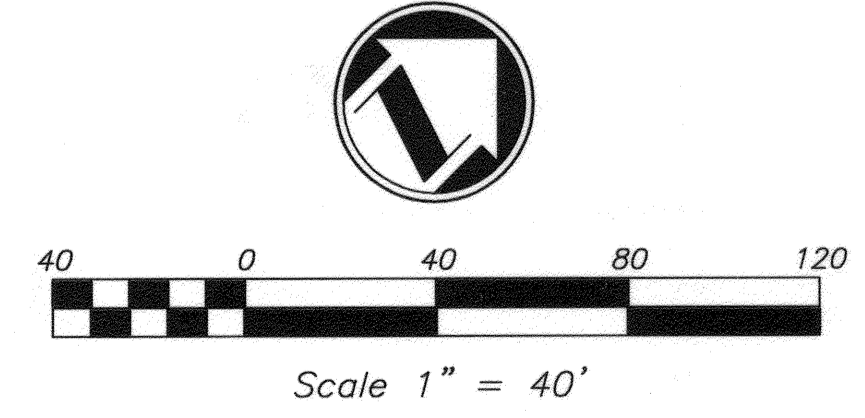
CURVE	LENGTH	RADIUS	DELTA	TAN
C2	226.49'	832.00'	15°35'49"	113.95'
C3	54.37'	35.00'	89°00'31"	34.40'
C4	54.98'	35.00'	90°00'01"	35.00'

**CONSTRUCTION NOTES**

- 1 PLACE A.C. OVER C.A.B. PER PAVEMENT NOTE, SEE SHEET 1
- 2 CONSTRUCT 6" CURB & GUTTER PER CITY STD. DWG. NO. 200 (TYPE I)
- 3 CONSTRUCT 6" CURB ONLY PER CITY STD. DWG. NO. 200 (TYPE I)
- 4 GRIND AND OVERLAY (1" MIN.) PAVING AS REQUIRED TO CREATE A SMOOTH TRANSITION.
- 5 CONSTRUCT CROSS GUTTER PER CITY STD. DWG. NO. 220 (W=6)
- 6 CONSTRUCT DRIVEWAY APPROACH PER CITY STD. DWG. NO. 302 (TYPE PL-1)
- 7 CONSTRUCT PROPERTY LINE SIDEWALK PER CITY STD. DWG. NO. 325
- 8 CONSTRUCT CURB LINE SIDEWALK PER CITY STD. DWG. NO. 325
- 9 CONSTRUCT WHEELCHAIR RAMP PER CITY OF RIVERSIDE STD. DWG. NO. 304 (TYPE I)
- 10 INSTALL ENTRY GATE PER SEPARATE PLAN
- 11 CONSTRUCT CATCH BASIN PER CITY STD. DWG. NO. 405 (W=15')
- 12 CONSTRUCT UNDER SIDEWALK DRAIN PER CITY STD. DWG. NO. 410 OR APWA 150-3.
- 13 SAW CUT, JOIN EXISTING PAVING PER DETAIL ON SHEET 1.

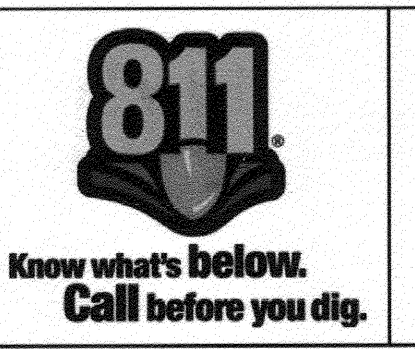


**INDIANA AVENUE**



CITY OF RIVERSIDE PUBLIC UTILITIES  
 WATER DEPARTMENT  
 REVIEWED FOR CONFLICTS BY: *Matthew R. [Signature]* DATE: 11/4/2015

CITY OF RIVERSIDE PUBLIC UTILITIES  
 ELECTRIC DEPARTMENT  
 REVIEWED FOR CONFLICTS BY: *Renee [Signature]* DATE: 11/4/15



PLANS PREPARED BY:  
**adkan ENGINEERS**  
 Civil Engineering - Surveying - Planning  
 6820 Airport Drive, Riverside, CA 92504  
 Tel: (951) 688-0244 Fax: (951) 688-0599  
 Under the Supervision of: *Charles J.A. Leach* 12/6/15  
 No. 53390 Exp. 6-30-17  
 STATE OF CALIFORNIA CIVIL ENGINEER

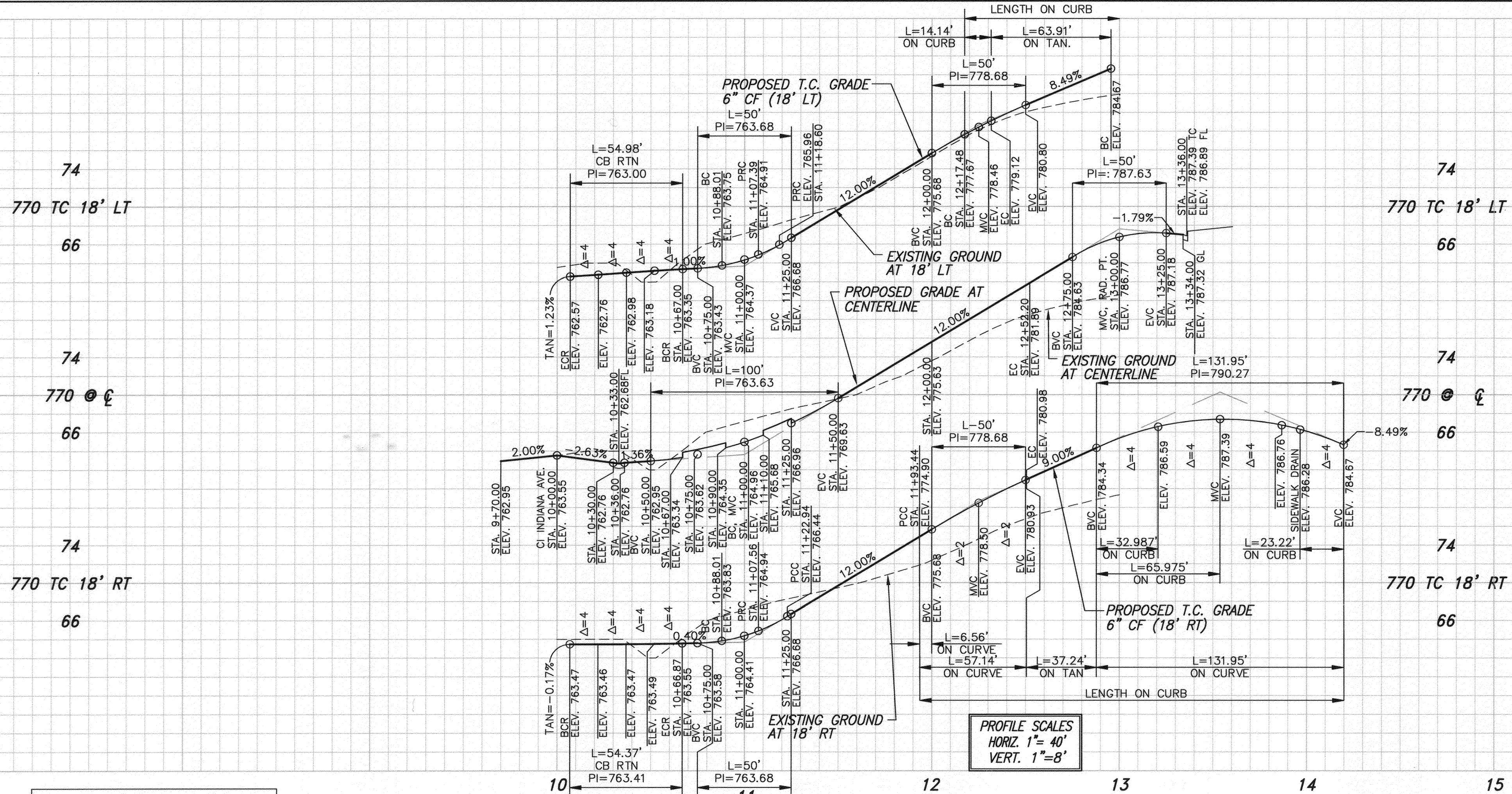
BENCHMARK: E2-R3  
 CHISELED SQUARE ON THE SOUTHEAST CORNER OF BUCHANAN WELL NO. 1 AT THE NORTHWEST CORNER OF MAGNOLIA AVENUE AND BUCHANAN STREET, ADJUSTED AND LEVELED: MAY 1997.  
 DATUM: (NGVD 29)  
 ELEVATION: 686.946

MARK	REVISIONS	APPR.	DATE

**CITY OF RIVERSIDE PUBLIC WORKS DEPARTMENT**  
 APPROVED BY: *[Signature]* DATE: 12/15/15  
 ENGINEERING MANAGER  
 CAPITAL PROJECTS  
 TRAFFIC ENGINEERING  
 DESIGNED BY: Rick DRAWN BY: Rick CHECKED BY: C-

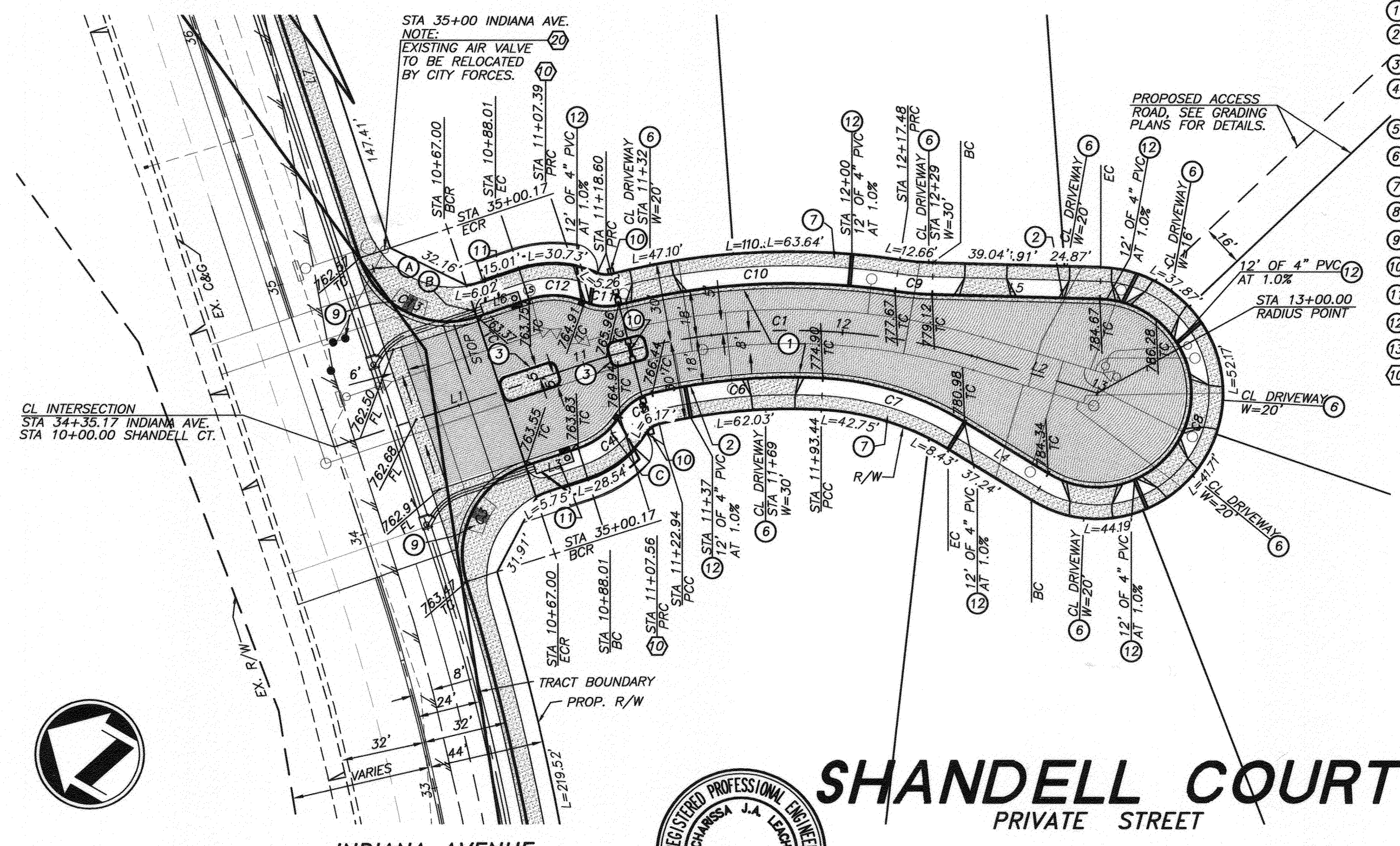
**STREET IMPROVEMENT PLAN**  
**TRACT 34236**  
**INDIANA AVENUE**  
 HORIZ. SCALE: 1" = 40' VERT. SCALE: 1" = 4'

PW14-0086  
 ACCOUNT NO.  
**R-4322**  
 SHEET 2 OF 5  
 J.N. 8518  
 FILE NAME: U:\Projects\Brett Karger\8518 TR 34236\Street Improvements\8518 st 02.dwg

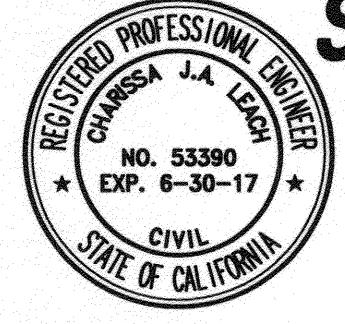
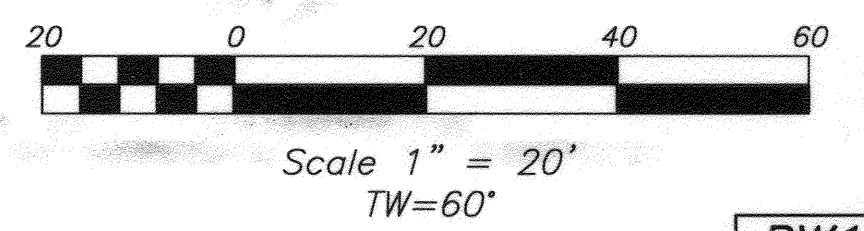
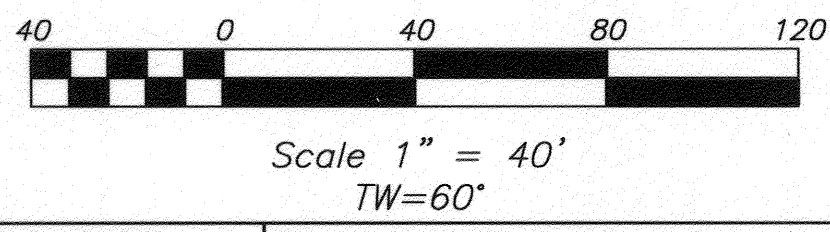
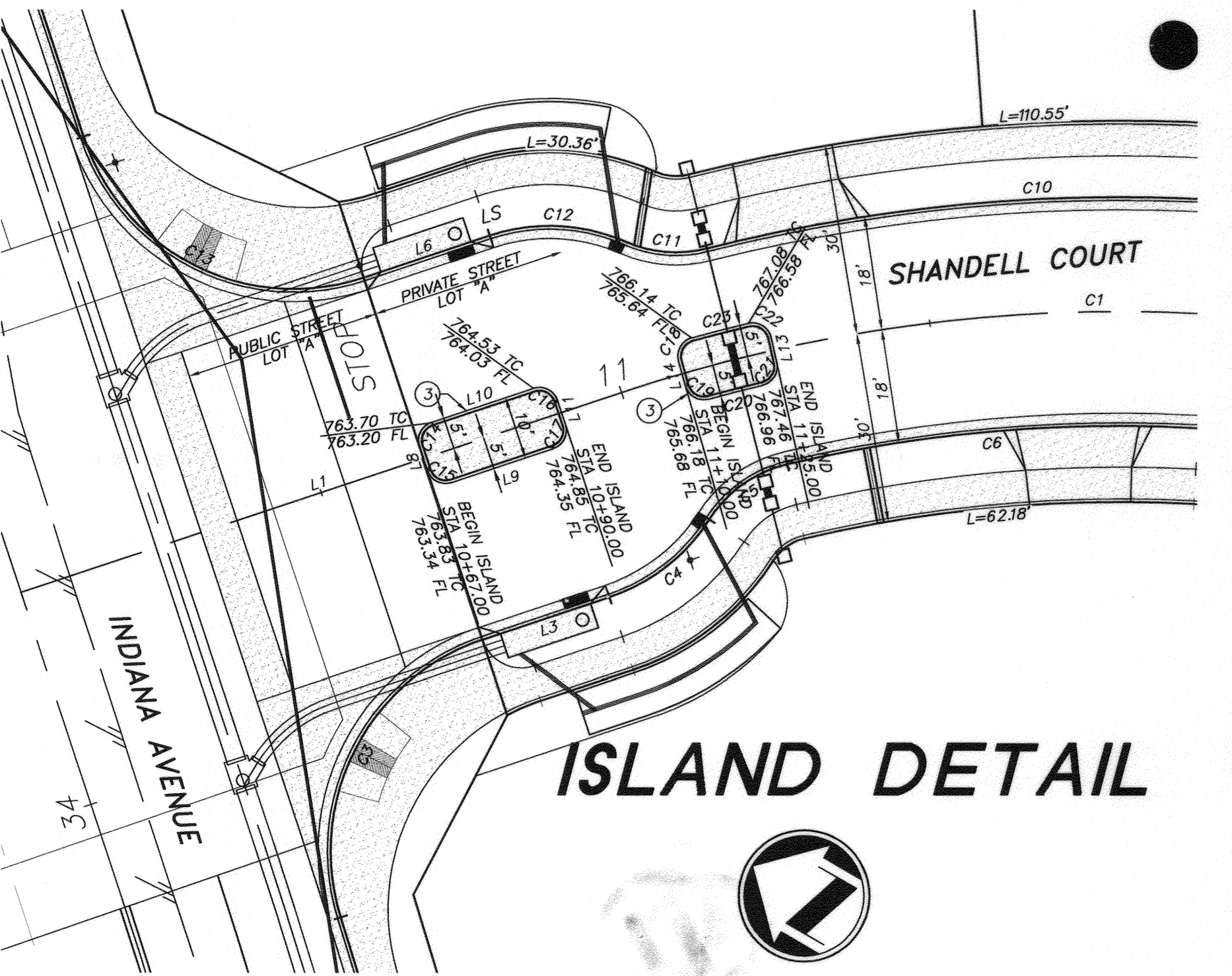


CURVE	LENGTH	RADIUS	DELTA	TAN
C2	226.49'	832.00'	15°35'49"	113.95'
C3	54.37'	35.00'	89°00'31"	34.40'
C4	20.39'	30.00'	38°56'12"	10.60'
C5	15.43'	20.00'	44°11'41"	8.12'
C6	65.42'	232.00'	16°09'22"	32.93'
C7	57.14'	115.00'	28°28'01"	29.17'
C8	131.95'	36.00'	210°00'00"	134.35'
C9	14.14'	115.00'	7°02'38"	7.08'
C10	106.00'	268.00'	22°39'41"	53.70'
C11	13.15'	20.00'	37°39'29"	6.82'
C12	21.95'	30.00'	41°55'17"	11.49'
C13	54.98'	35.00'	90°00'01"	35.00'

LINE	LENGTH	DIRECTION
L8	4.00'	N41°36'50"E
L10	16.98'	N48°23'10"W
L11	4.00'	N41°36'50"E
L13	4.00'	N47°20'39"E
L14	4.00'	N43°54'22"E



- CONSTRUCTION NOTES**
- PLACE A.C. OVER C.A.B. PER PAVEMENT NOTE, SEE SHEET 1
  - CONSTRUCT 6" CURB & GUTTER PER CITY STD. DWG. NO. 200 (TYPE I)
  - CONSTRUCT 6" CURB ONLY PER CITY STD. DWG. NO. 200 (TYPE I)
  - GRIND AND OVERLAY (1" MIN.) PAVING AS REQUIRED TO CREATE A SMOOTH TRANSITION.
  - CONSTRUCT CROSS GUTTER PER CITY STD. DWG. NO. 220 (W=6")
  - CONSTRUCT DRIVEWAY APPROACH PER CITY STD. DWG. NO. 302 (TYPE PL-I)
  - CONSTRUCT PROPERTY LINE SIDEWALK PER CITY STD. DWG. NO. 325
  - CONSTRUCT CURB LINE SIDEWALK PER CITY STD. DWG. NO. 325
  - CONSTRUCT WHEELCHAIR RAMP PER CITY OF RIVERSIDE STD. DWG. NO. 304 (TYPE I)
  - INSTALL ENTRY GATE PER SEPARATE PLAN
  - CONSTRUCT CATCH BASIN PER CITY STD. DWG. NO. 405 (W=15")
  - CONSTRUCT UNDER SIDEWALK DRAIN PER CITY STD. DWG. NO. 410 OR APWA 150-3.
  - SAW CUT, JOIN EXISTING PAVING PER DETAIL ON SHEET 1.
  - CONSTRUCT 18"x18" DROP INLET WITH TRAFFIC RATED LID



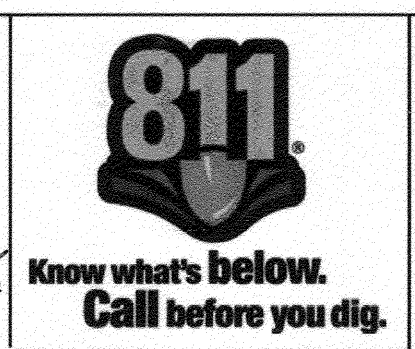
**SHANDELL COURT**  
PRIVATE STREET

CITY OF RIVERSIDE PUBLIC UTILITIES  
WATER DEPARTMENT

REVIEWED FOR CONFLICTS BY: *[Signature]* DATE: *11/1/2015*

CITY OF RIVERSIDE PUBLIC UTILITIES  
ELECTRIC DEPARTMENT

REVIEWED FOR CONFLICTS BY: *[Signature]* DATE: *11/1/2015*



PLANS PREPARED BY:  
**adkan ENGINEERS**  
Civil Engineering - Surveying - Planning  
6820 Airport Drive, Riverside, CA 92504  
Tel: (951) 898-0741 Fax: (951) 688-0599

BENCHMARK: E2-R3  
CHISELED SQUARE ON THE SOUTHEAST CORNER OF BUCHANAN WELL NO. 1 AT THE NORTHWEST CORNER OF MAGNOLIA AVENUE AND BUCHANAN STREET, ADJUSTED AND LEVELLED: MAY 1997.  
DATUM: (NGVD 29)  
ELEVATION: 686.946

DESIGNED BY: *Rick* DRAWN BY: *Rick* CHECKED BY: *C-*

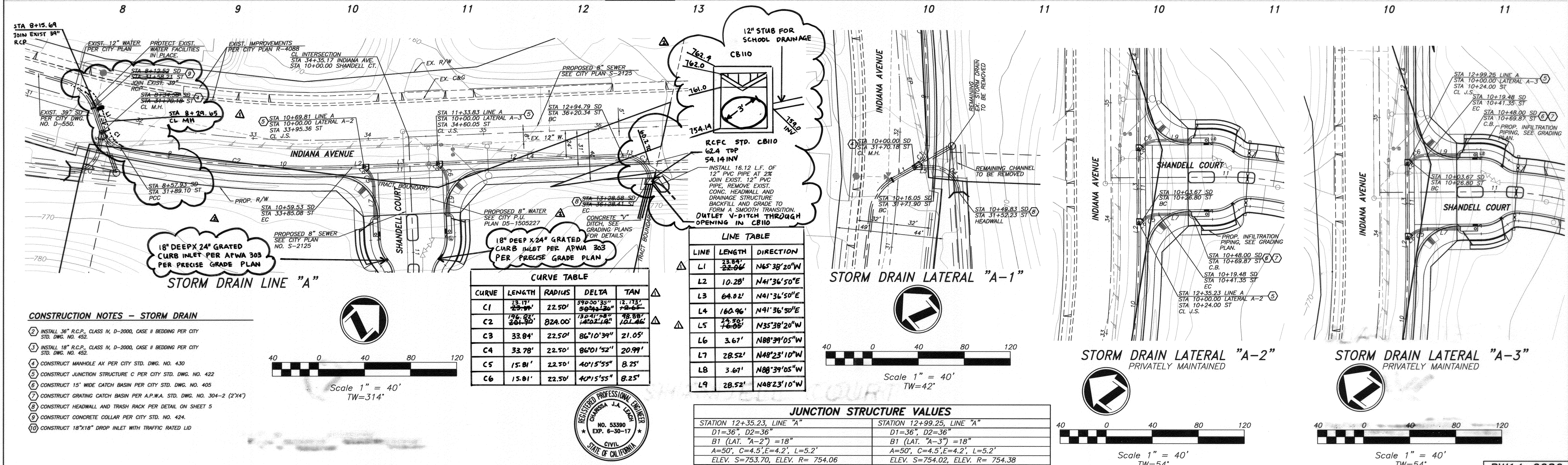
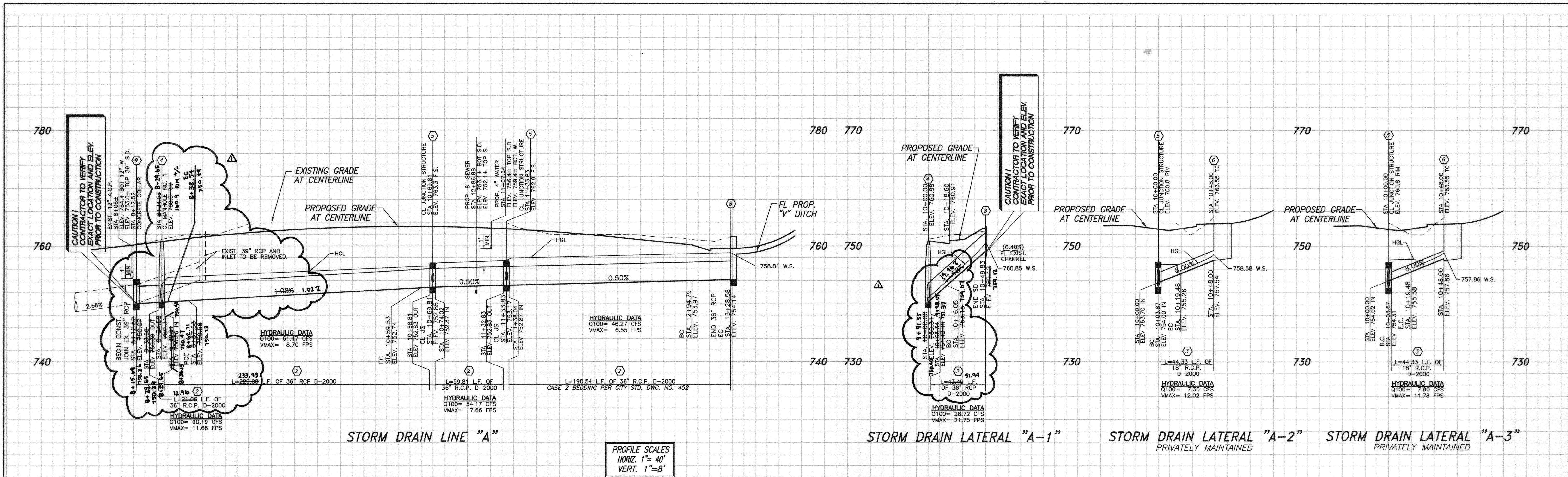
**CITY OF RIVERSIDE**  
PUBLIC WORKS DEPARTMENT

APPROVED BY: *[Signature]* DATE: *11/1/2015*  
ENGINEERING MANAGER  
CAPITAL PROJECTS  
TRAFFIC ENGINEERING

STREET IMPROVEMENT PLAN  
**TRACT 34236**  
**SHANDELL COURT**

HORIZ. SCALE: 1" = 40' VERT. SCALE: 1" = 8'

PW14-0086  
ACCOUNT NO.  
**R-4322**  
SHEET **3** OF **5**  
J.N. 8518



- CONSTRUCTION NOTES - STORM DRAIN**
- INSTALL 36" R.C.P., CLASS IV, D-2000, CASE II BEDDING PER CITY STD. DWG. NO. 452.
  - INSTALL 18" R.C.P., CLASS IV, D-2000, CASE II BEDDING PER CITY STD. DWG. NO. 452.
  - CONSTRUCT MANHOLE AX PER CITY STD. DWG. NO. 430.
  - CONSTRUCT JUNCTION STRUCTURE C PER CITY STD. DWG. NO. 422.
  - CONSTRUCT 15" WIDE CATCH BASIN PER CITY STD. DWG. NO. 405.
  - CONSTRUCT GRATING CATCH BASIN PER A.P.W.A. STD. DWG. NO. 304-2 (2'x4').
  - CONSTRUCT HEADWALL AND TRASH RACK PER DETAIL ON SHEET 5.
  - CONSTRUCT CONCRETE COLLAR PER CITY STD. NO. 424.
  - CONSTRUCT 18"x18" DROP INLET WITH TRAFFIC RATED LID.

CITY OF RIVERSIDE PUBLIC UTILITIES  
 WATER DEPARTMENT

REVIEWED FOR CONFLICTS BY: *Matthew B...* DATE: *11/20/15*

CITY OF RIVERSIDE PUBLIC UTILITIES  
 ELECTRIC DEPARTMENT

REVIEWED FOR CONFLICTS BY: *W...* DATE: *11/20/15*

**811**  
 Know what's below.  
 Call before you dig.

**adkan ENGINEERS**  
 Civil Engineering - Surveying - Planning  
 6820 Airport Drive, Riverside, CA 92504  
 Tel: (951) 688-0211 Fax: (951) 688-0599

Under the Supervision of: *W...* DATE: *11/20/15*

BENCHMARK: E2-R3  
 CHISEL SQUARE ON THE SOUTHEAST CORNER OF BUCHANAN WELL NO. 1 AT THE NORTHWEST CORNER OF MAGNOLIA AVENUE AND BUCHANAN STREET, ADJUSTED AND LEVELLED: MAY 1997.

DATUM: (NGVD 29)  
 ELEVATION: 686.946

MARK	REVISIONS	APPR.	DATE
AS BUILT SD TIE-IN LOCATION	REPLACED HEADWALL w/CB110		

DESIGNED BY: Rick DRAWN BY: Rick CHECKED BY: C-

**CITY OF RIVERSIDE PUBLIC WORKS DEPARTMENT**

APPROVED BY: *[Signature]* DATE: *12/10/15*

ENGINEERING MANAGER: *[Signature]* DATE: *12/10/15*

CAPITAL PROJECTS: *[Signature]* DATE: *12/10/15*

TRAFFIC ENGINEERING: *[Signature]* DATE: *12/10/15*

CITY ENGINEER / PW DIRECTOR: *[Signature]* DATE: *12/10/15*

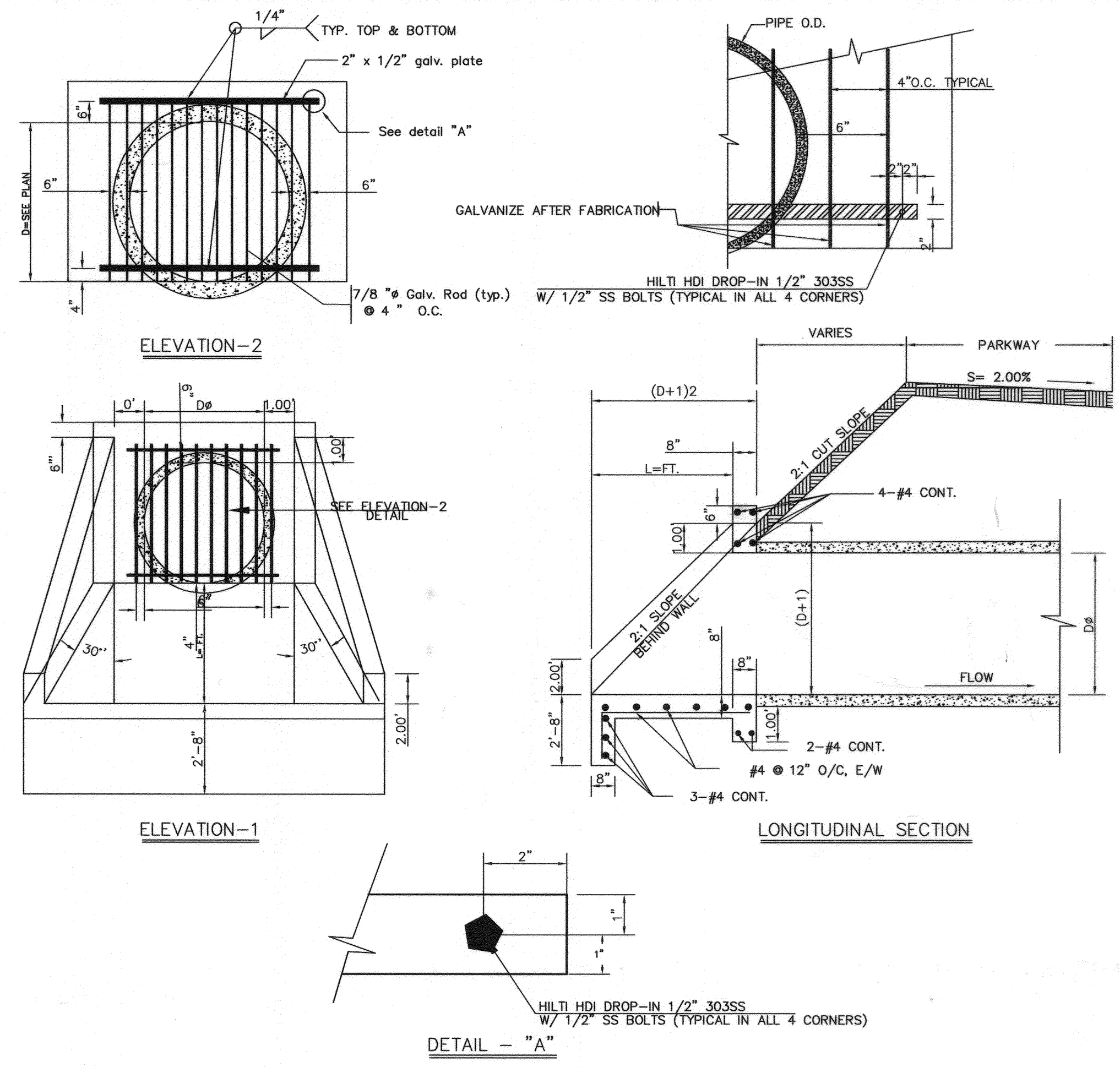
**STREET IMPROVEMENT PLAN**  
**TRACT 34236**  
**STORM DRAIN**

HORIZ. SCALE: 1" = 40' VERT. SCALE: 1" = 8'

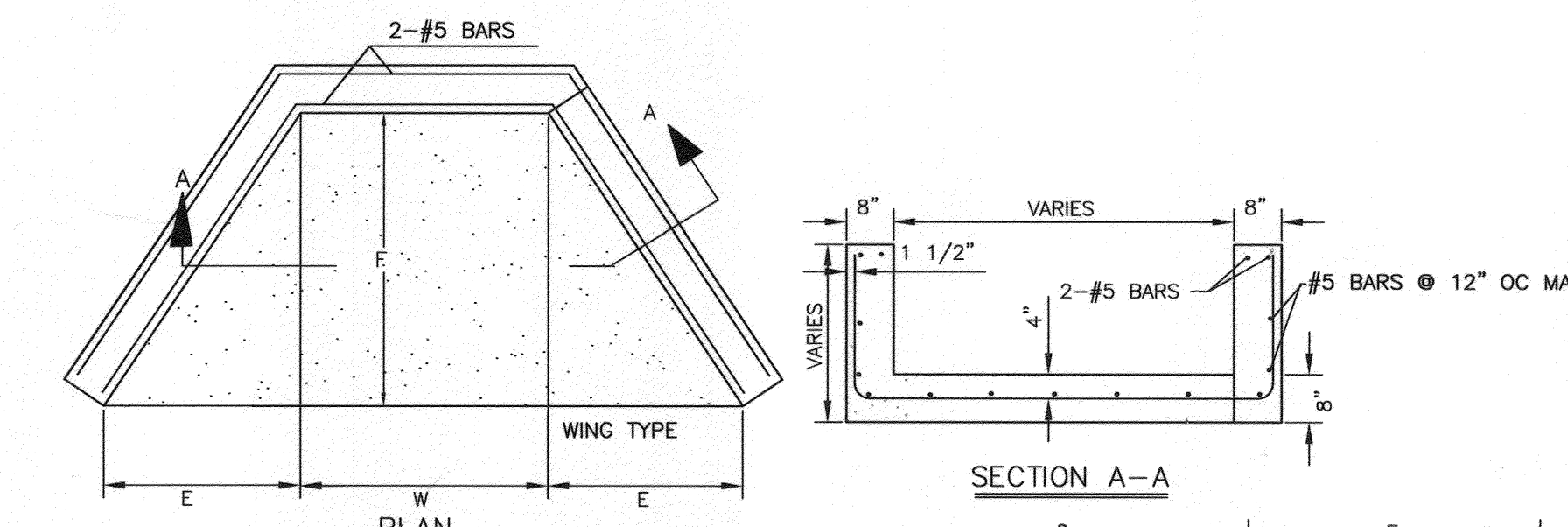
PW14-0086  
 ACCOUNT NO.  
**R-4322**  
 SHEET 4 OF 5

J.N. 8518  
 FILE NAME: U:\Projects\Brett Karger\8518 TR 34236\Street Improvements\8518 st 04.dwg

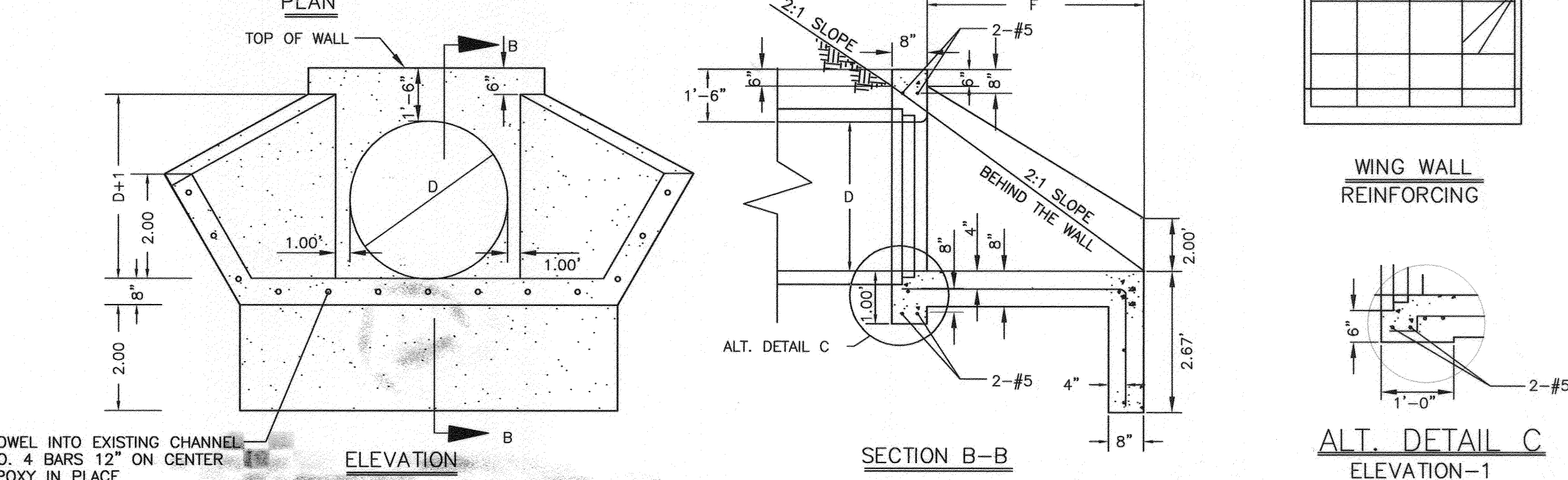
PLOT DATE: 10/16/2015



TRASH RACK DETAIL  
N.T.S.



- NOTES:
1. CONCRETE SHALL BE 560-C-3250
  2. EXPOSED CORNERS TO BE CHAMFERED 3/4".
  3. MULTIPLE PIPES TO BE SET A DISTANCE OF D/2, WITH A 1" MINIMUM BETWEEN OUTSIDE DIAMETERS OF PIPES.
  4. TOP OF HEADWALL SHALL BE PLACED APPROXIMATELY PARALLEL TO PROFILE GRADE WHEN THE GRADE IS 3% OR MORE.
  5. SKEWED PIPES: DIMENSION W TO BE INCREASED IN WIDTH OR LENGTH DUE TO SKEW OR MULTIPLE PIPES.
  6. FOR PIPE WALL THICKNESS GREATER 3" USE ALTERNATE DETAIL-C.



WING TYPE HEADWALLS  
N.T.S.

DIA. OF PIPE	DIMENSIONS			
	E=FT.	F=FT.	W=FT.	E=FT.
INCH 30"	(D+1)2	D+24"	45"	
36"	5'-2"	9'-0"	5'-6"	9'-0"



CITY OF RIVERSIDE PUBLIC UTILITIES WATER DEPARTMENT		CITY OF RIVERSIDE PUBLIC UTILITIES ELECTRIC DEPARTMENT		CITY OF RIVERSIDE BUSINESS TAX ACCT.#058833 EXP.1/1/16		PW14-0086	
REVIEWED FOR CONFLICTS BY: <i>[Signature]</i> DATE: <i>[Date]</i>		REVIEWED FOR CONFLICTS BY: <i>[Signature]</i> DATE: <i>[Date]</i>		<b>adkan ENGINEERS</b> Civil Engineering - Surveying - Planning 6820 Airport Drive, Riverside, CA 92504 Tel: (951) 688-0241 Fax: (951) 688-0599		<b>CITY OF RIVERSIDE PUBLIC WORKS DEPARTMENT</b> STREET IMPROVEMENT PLAN <b>TRACT 34236</b> <b>STORM DRAIN DETAILS</b>	
BENCHMARK: E2-R3 CHISELED SQUARE ON THE SOUTHEAST CORNER OF BUCHANAN WELL NO. 1 AT THE NORTHWEST CORNER OF MAGNOLIA AVENUE AND BUCHANAN STREET, ADJUSTED AND LEVELED: MAY 1997.		DATUM: (NGVD 29) ELEVATION: 686.946		APPROVED BY: <i>[Signature]</i> DATE: 12/15/14 ENGINEERING MANAGER CAPITAL PROJECTS TRAFFIC ENGINEERING		ACCOUNT NO. R-4322 SHEET 5 OF 5 J.N. 8518	
DESIGNED BY: Rick DRAWN BY: Rick CHECKED BY: C-		DATE: 12/15/14		HORIZ. SCALE: VERT. SCALE:		FILE NAME: U:\Projects\Brett Karger\8518 TR 34236\Street Improvements\8518 at 05.dwg	