

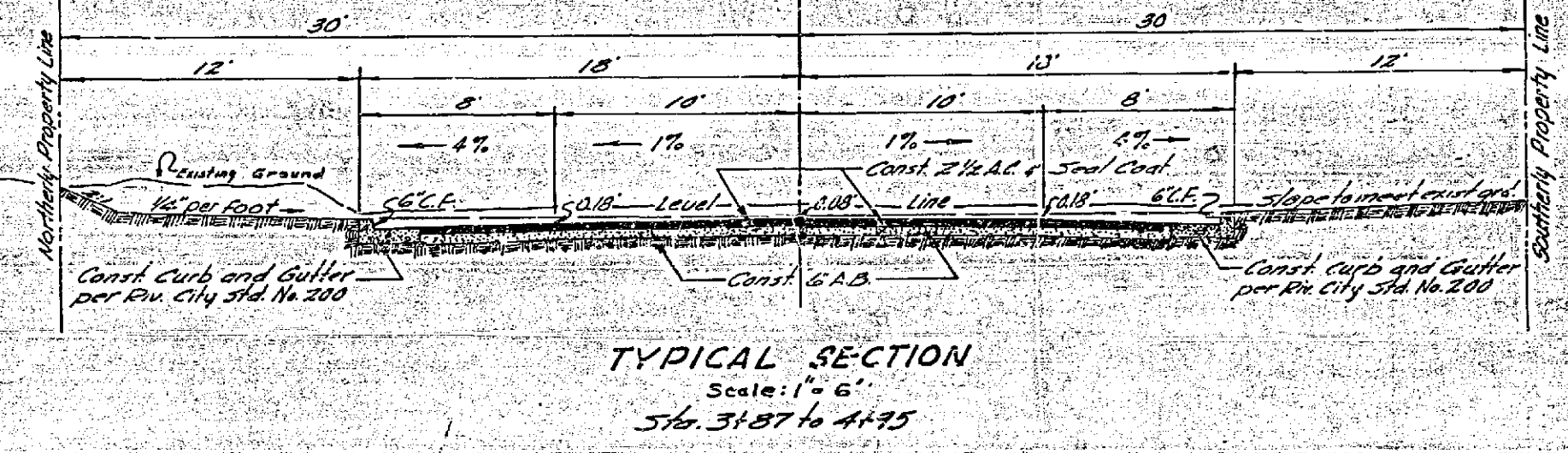
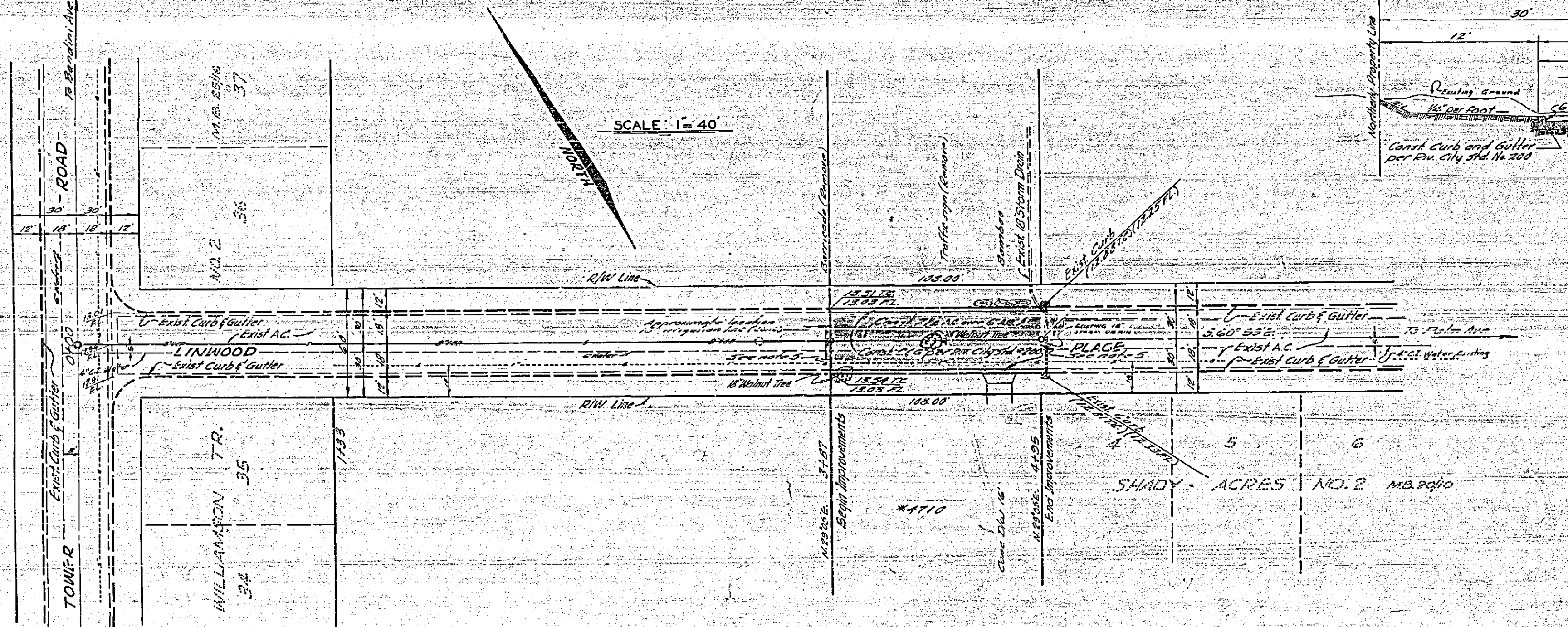
ELEV. 810
ELEV. 810
ELEV. 810
ELEV. 810

ELEV. 810
ELEV. 810
ELEV. 810
ELEV. 810

BM. ELEV. 815.4 - S&L IN MID PT. OF CB. RET. S.E. CORNER OF OAKWOOD PL. & TOWER RD.
FB. 679/45-46
SCALE HOR. 1"=40
VERT. 1"=4'

Quantities

1. Concrete base	2 EA
2. Curb & gutter 3/4" deep, 200	216 L.F.
3. 2 1/2" asphalt concrete	2,492 SF
4. 6" aggregate base	2,492 SF
5. Top coat	2,492 SF



- NOTES:
- All construction shall be in accordance with Standard Specifications No. 401 of the City of Riverside Department of Public Works.
 - It shall be the responsibility of the Contractor to clear the right of way in accordance with the provisions of the law as it affects each utility including irrigation lines and appurtenances and at no extra cost to the City.
 - Prime coat, paint binder & seal coat required.
 - Trucks within 40 ft to be removed.
 - Trim edge of pavement to provide a smooth crown.

REVISIONS		CITY OF RIVERSIDE, CALIFORNIA DEPARTMENT OF PUBLIC WORKS	
MARK	DATE	DESCRIPTION	
LINWOOD PLACE IMPROVEMENT DISTRICT			
DESIGNED BY	SUBMITTED BY	APPROVED BY	PROJECT NO. 6040
DRAWN BY	TRANS. DIV.	TRAFFIC DIV.	R-436
CHECKED BY	RECOMMENDED BY	DATE	SHEET 1 OF 1