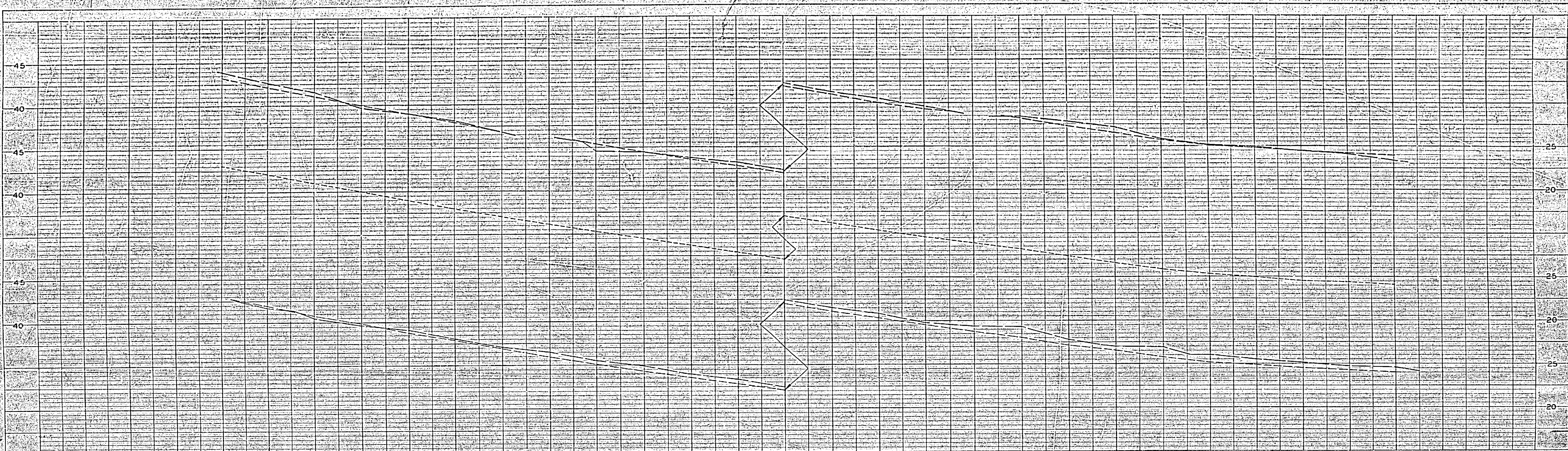


REVISIONS SHEET - NOT TO SCALE  
 BY: J. B. BROWN, CIVIL ENGINEER, RIVERSIDE, CALIF.

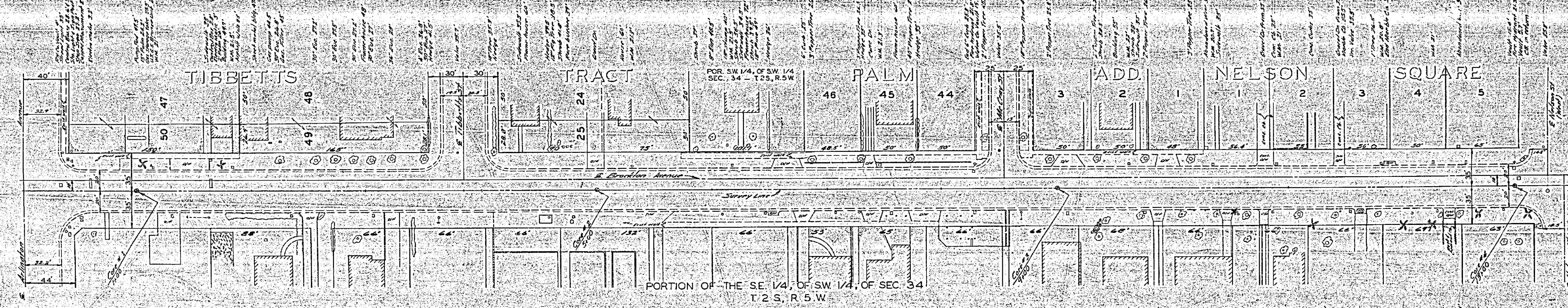
**BOULE**

1	4"	1/8"	1/8"
2	4"	1/8"	1/8"
3	4"	1/8"	1/8"
4	4"	1/8"	1/8"



**Cur Ratings**

M	AC	IR	SM
1	4"	1/8"	1/8"
2	4"	1/8"	1/8"
3	4"	1/8"	1/8"
4	4"	1/8"	1/8"



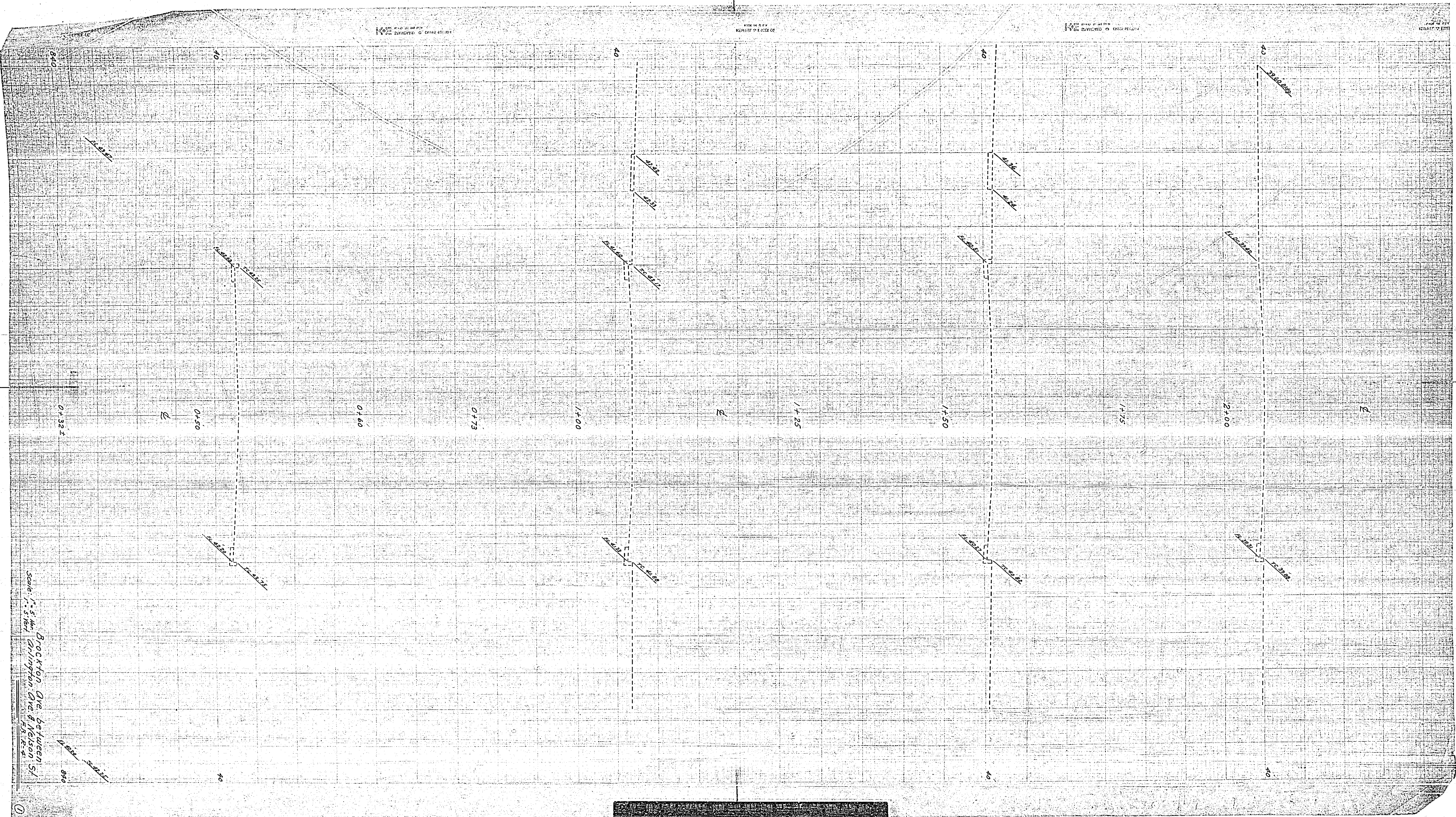
PORTION OF THE SE 1/4, OF SW 1/4, OF SEC. 34  
 T. 2 S., R. 5 W.

**MAH**

1	4"	1/8"	1/8"
2	4"	1/8"	1/8"
3	4"	1/8"	1/8"
4	4"	1/8"	1/8"

REVISIONS			CITY OF RIVERSIDE, CALIFORNIA DEPARTMENT OF PUBLIC WORKS
MARK	DATE	DESCRIPTION	
			BROCKTON AVE. BET. ARLINGTON AVE & NELSON ST.
DESIGNED BY	CHECKED BY	APPROVED BY	R-441 SHEET 7 OF 7
DRAWN BY		DIRECTOR OF PUBLIC WORKS	
RECOMMENDED BY	ASSISTANT CITY ENGINEER	DATE	

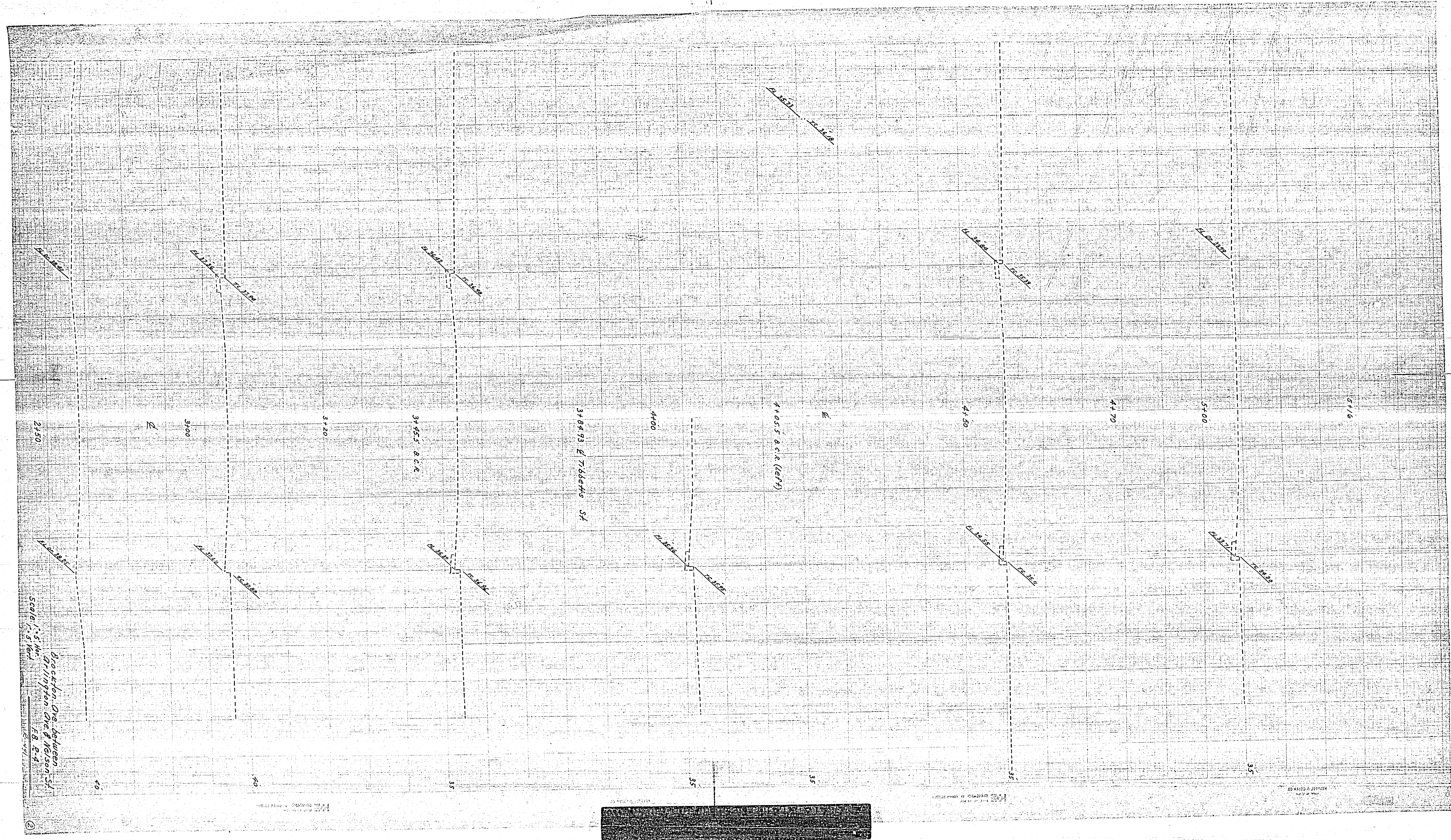
204 Elm St. Bldg. - U.S.C. & G. Bldg.  
 City of Riverside, Cal. in streets of  
 NW Cor. Brockton & Arlington.  
 R.B. BROWN, CIVIL ENGINEER  
 Scale: Horizontal 1" = 50'  
 Vertical 1" = 5'



Brookton Ave. between  
Springfield Ave & Nelson St.  
E.A. 10-11-11

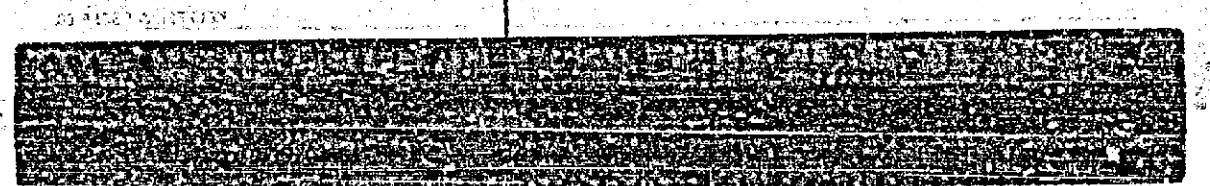
Scale: 1" = 50 feet

0

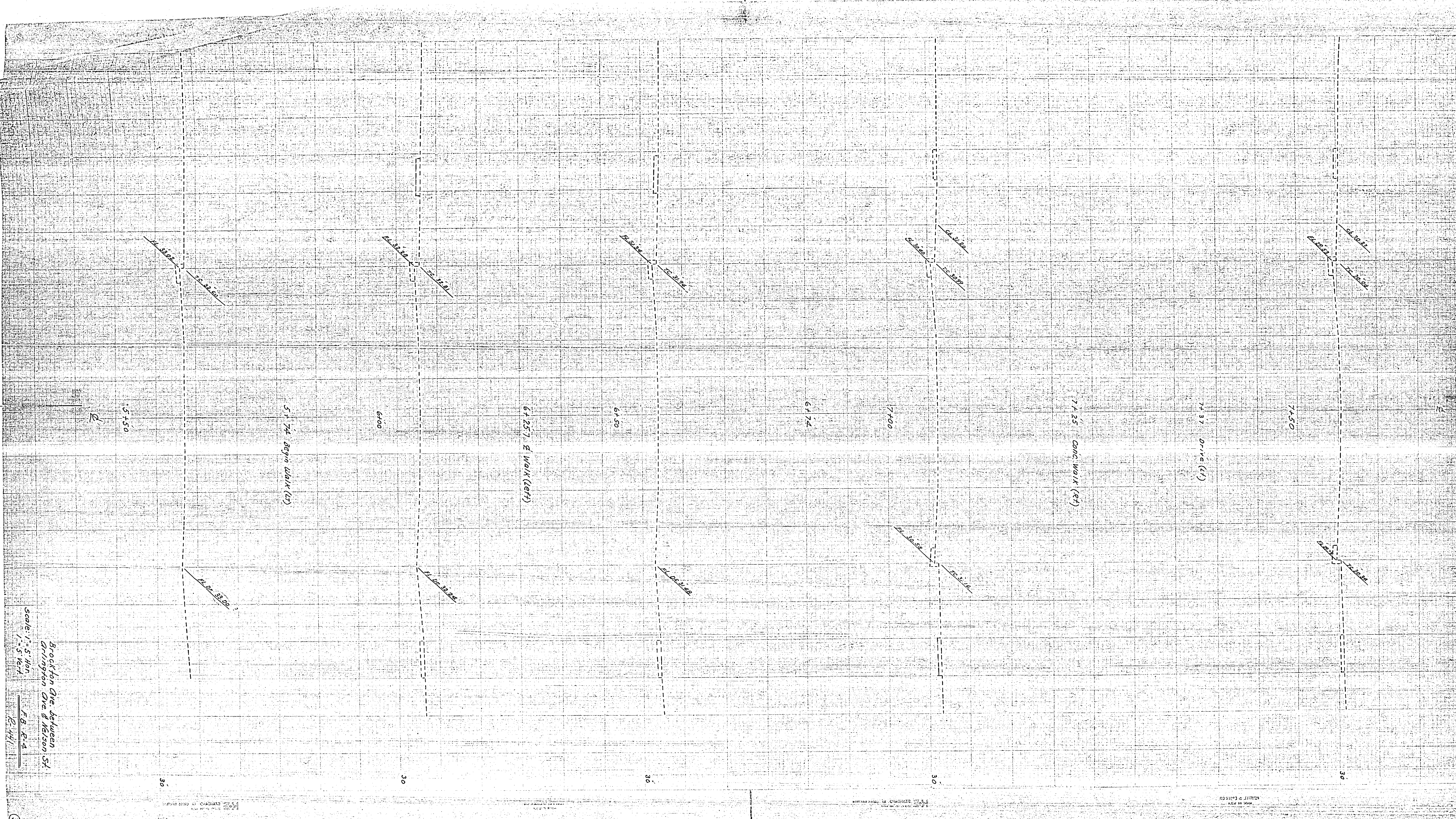


Scale 1" = 50'  
Grading Die between  
Grington Die & Nelson St  
E.B. & A.

2



STATIONED & SET OUT  
BY THE SURVEYOR



Scale: 1" = 5' Vert  
 1" = 5' Hor

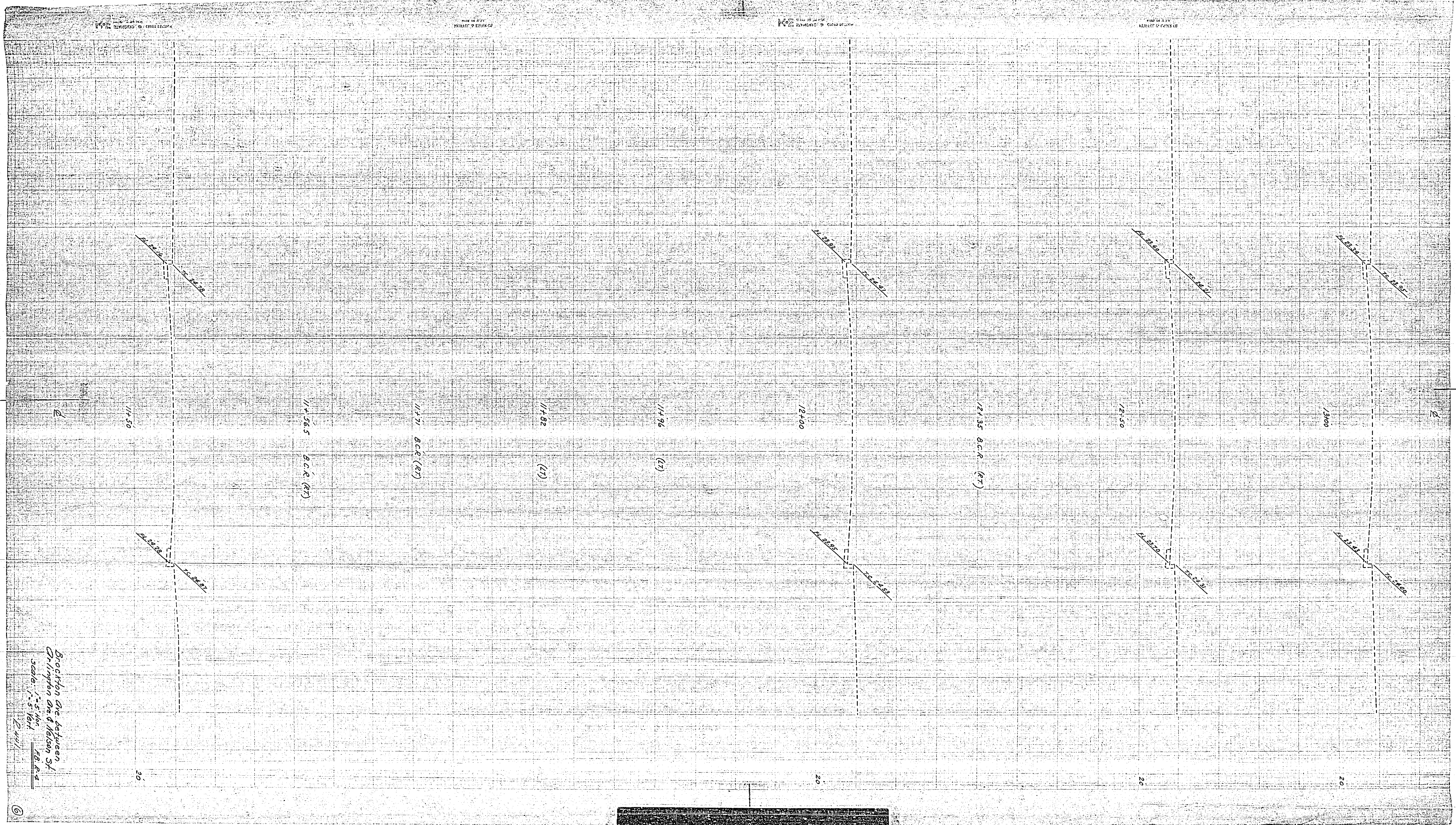
FB, E-4

Brookton Ave. between  
 Arlington Ave & Kelson St.

3







Section line between  
Champion and Nelson Sp.  
Scale 1" = 5' 10" 1/2  
2-4-11

MADE IN U.S.A.  
KODAK SAFETY FILM

MADE IN U.S.A.  
KODAK SAFETY FILM

MADE IN U.S.A.  
KODAK SAFETY FILM

MADE IN U.S.A.  
KODAK SAFETY FILM

13105 B.C.R. (RT)

13143 Curb Race (RT)

13248 Curb Race (RT)

E. Nelson St

B.C.R. (RT)

E.C.R. (LT)

13759 B (RT)

13798 B.C.R. (RT)

14100

14150

Bracketing done between  
Grimpen Ave & Nelson St  
Scale 1" = 50'  
E.H.L.

②

