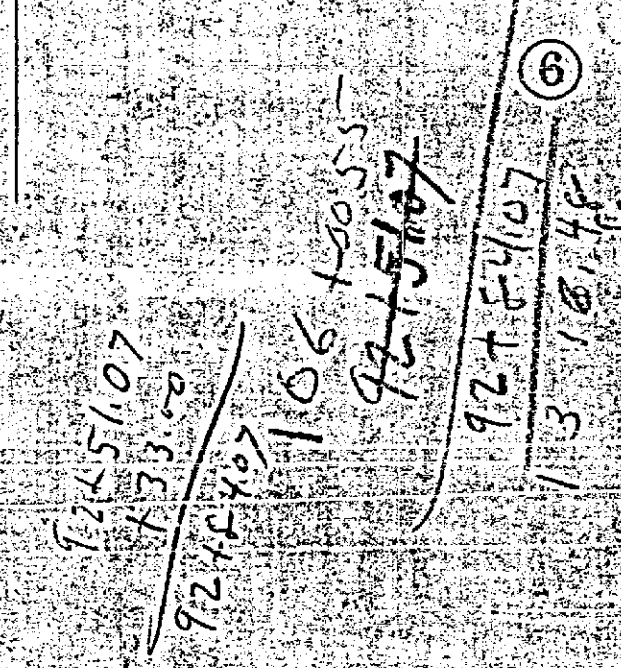


ROUTE 15
IOWA AVE FROM EIGHTH STREET
TO SAN BERNARDINO COUNTY LINE

4



16 TWOCOOD & HERICK 15
COLUNBERT AVE
UBDIVISION 5

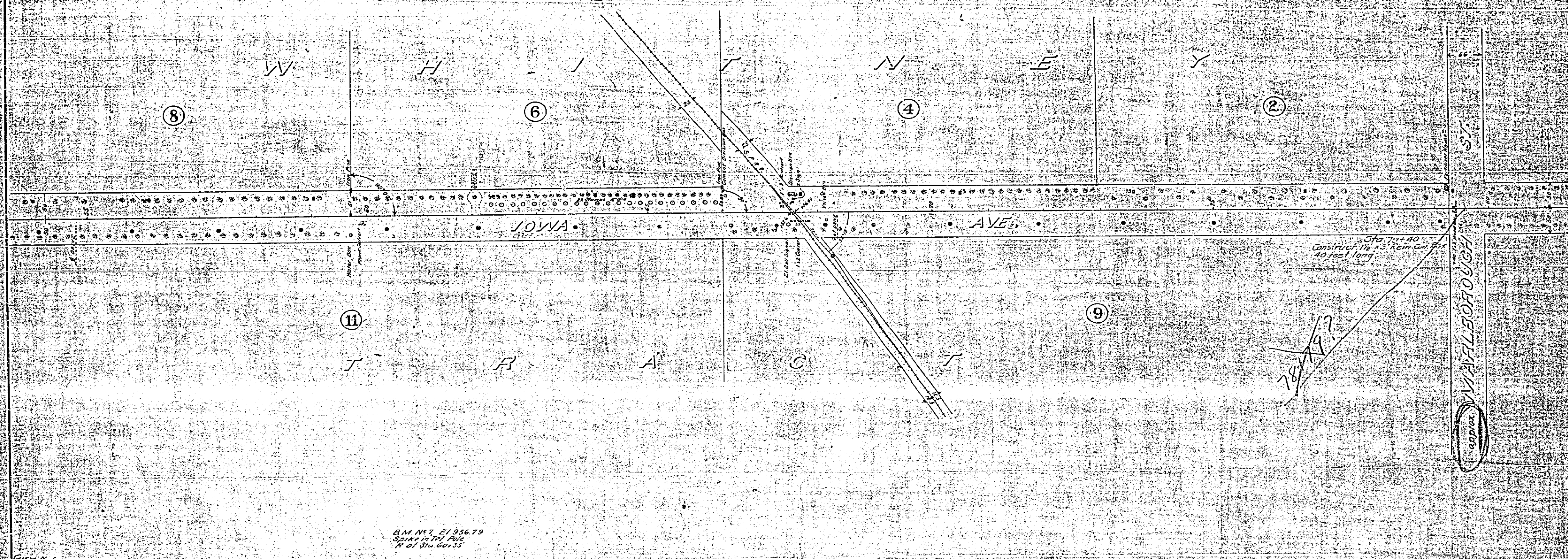


IP. schedule
Granite Spine
PAINWORTH AVE

Station	Elevation	Grade
92+00	111.5	0.00%
92+10	111.5	0.00%
92+20	111.5	0.00%
92+30	111.5	0.00%
92+40	111.5	0.00%
92+50	111.5	0.00%
92+60	111.5	0.00%
92+70	111.5	0.00%
92+80	111.5	0.00%
92+90	111.5	0.00%
93+00	111.5	0.00%
93+10	111.5	0.00%
93+20	111.5	0.00%
93+30	111.5	0.00%
93+40	111.5	0.00%
93+50	111.5	0.00%
93+60	111.5	0.00%
93+70	111.5	0.00%
93+80	111.5	0.00%
93+90	111.5	0.00%
94+00	111.5	0.00%
94+10	111.5	0.00%
94+20	111.5	0.00%
94+30	111.5	0.00%
94+40	111.5	0.00%
94+50	111.5	0.00%
94+60	111.5	0.00%
94+70	111.5	0.00%
94+80	111.5	0.00%
94+90	111.5	0.00%
95+00	111.5	0.00%
95+10	111.5	0.00%
95+20	111.5	0.00%
95+30	111.5	0.00%
95+40	111.5	0.00%
95+50	111.5	0.00%
95+60	111.5	0.00%
95+70	111.5	0.00%
95+80	111.5	0.00%
95+90	111.5	0.00%
96+00	111.5	0.00%
96+10	111.5	0.00%
96+20	111.5	0.00%
96+30	111.5	0.00%
96+40	111.5	0.00%
96+50	111.5	0.00%
96+60	111.5	0.00%
96+70	111.5	0.00%
96+80	111.5	0.00%
96+90	111.5	0.00%
97+00	111.5	0.00%
97+10	111.5	0.00%
97+20	111.5	0.00%
97+30	111.5	0.00%
97+40	111.5	0.00%
97+50	111.5	0.00%
97+60	111.5	0.00%
97+70	111.5	0.00%
97+80	111.5	0.00%
97+90	111.5	0.00%
98+00	111.5	0.00%
98+10	111.5	0.00%
98+20	111.5	0.00%
98+30	111.5	0.00%
98+40	111.5	0.00%
98+50	111.5	0.00%
98+60	111.5	0.00%
98+70	111.5	0.00%
98+80	111.5	0.00%
98+90	111.5	0.00%
99+00	111.5	0.00%
99+10	111.5	0.00%
99+20	111.5	0.00%
99+30	111.5	0.00%
99+40	111.5	0.00%
99+50	111.5	0.00%
99+60	111.5	0.00%
99+70	111.5	0.00%
99+80	111.5	0.00%
99+90	111.5	0.00%
100+00	111.5	0.00%

ROUTE #13
 IOWA AVE. FROM EIGHTH STREET
 TO SAN BERNARDINO COUNTY LINE

3



Curve No. 6 -0.86% -1.01% -0.42% -1.12%

Curve No. 10 -0.71% -1.56% -1.63% -2.00%

Curve No. 12 -2.00%

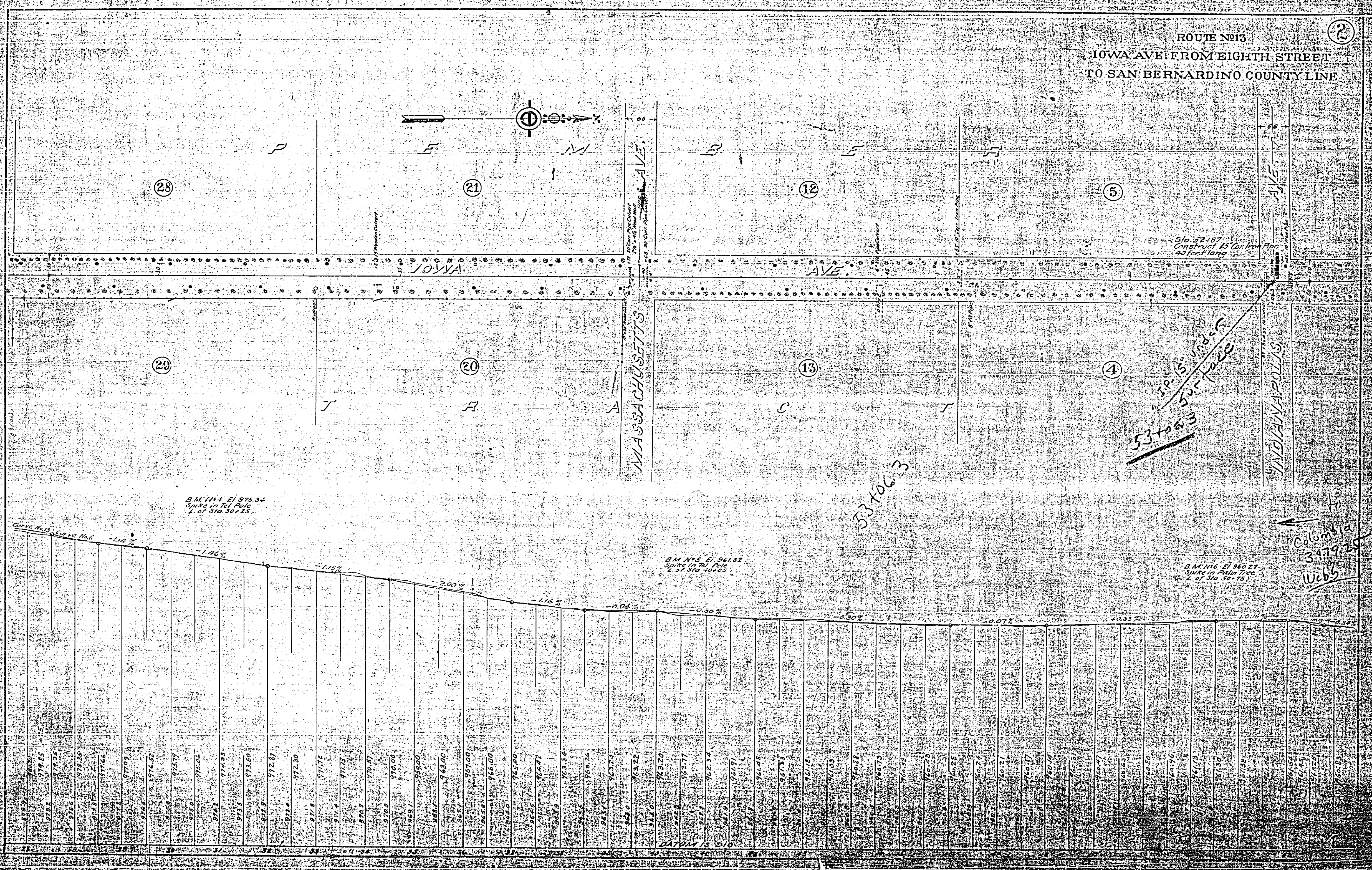
BM No. 7, El. 936.79
 Spike in Top Pole,
 N. of Sta. 60+35

BM No. 8, El. 944.77
 Spike in Top Pole,
 N. of Sta. 70+34

BM No. 9, El. 936.97
 Spike in Top Pole,
 N. of Sta. 79+10

51	52	53	54	55	56	57	58	59	60	61	62	63	64	65	66	67	68	69	70	71	72	73	74	75	76	77	78	79	80	81	82	83	84	85	86	87	88	89	90	91	92	93	94	95	96	97	98	99	100																																																																							
936.80	936.81	936.82	936.83	936.84	936.85	936.86	936.87	936.88	936.89	936.90	936.91	936.92	936.93	936.94	936.95	936.96	936.97	936.98	936.99	937.00	937.01	937.02	937.03	937.04	937.05	937.06	937.07	937.08	937.09	937.10	937.11	937.12	937.13	937.14	937.15	937.16	937.17	937.18	937.19	937.20	937.21	937.22	937.23	937.24	937.25	937.26	937.27	937.28	937.29	937.30	937.31	937.32	937.33	937.34	937.35	937.36	937.37	937.38	937.39	937.40	937.41	937.42	937.43	937.44	937.45	937.46	937.47	937.48	937.49	937.50	937.51	937.52	937.53	937.54	937.55	937.56	937.57	937.58	937.59	937.60	937.61	937.62	937.63	937.64	937.65	937.66	937.67	937.68	937.69	937.70	937.71	937.72	937.73	937.74	937.75	937.76	937.77	937.78	937.79	937.80	937.81	937.82	937.83	937.84	937.85	937.86	937.87	937.88	937.89	937.90	937.91	937.92	937.93	937.94	937.95	937.96	937.97	937.98	937.99	938.00

ROUTE No 15
 IOWA AVE FROM EIGHTH STREET
 TO SAN BERNARDINO COUNTY LINE



B.M. 1164 El. 976.32
 Spike in Palm Tree
 I. of Sta 30+15

B.M. 1165 El. 961.82
 Spike in Palm Tree
 I. of Sta 40+05

B.M. 1166 El. 962.22
 Spike in Palm Tree
 I. of Sta 50+15

53+06.3

53+06.3
 15' x 15' lot
 15' x 15' lot

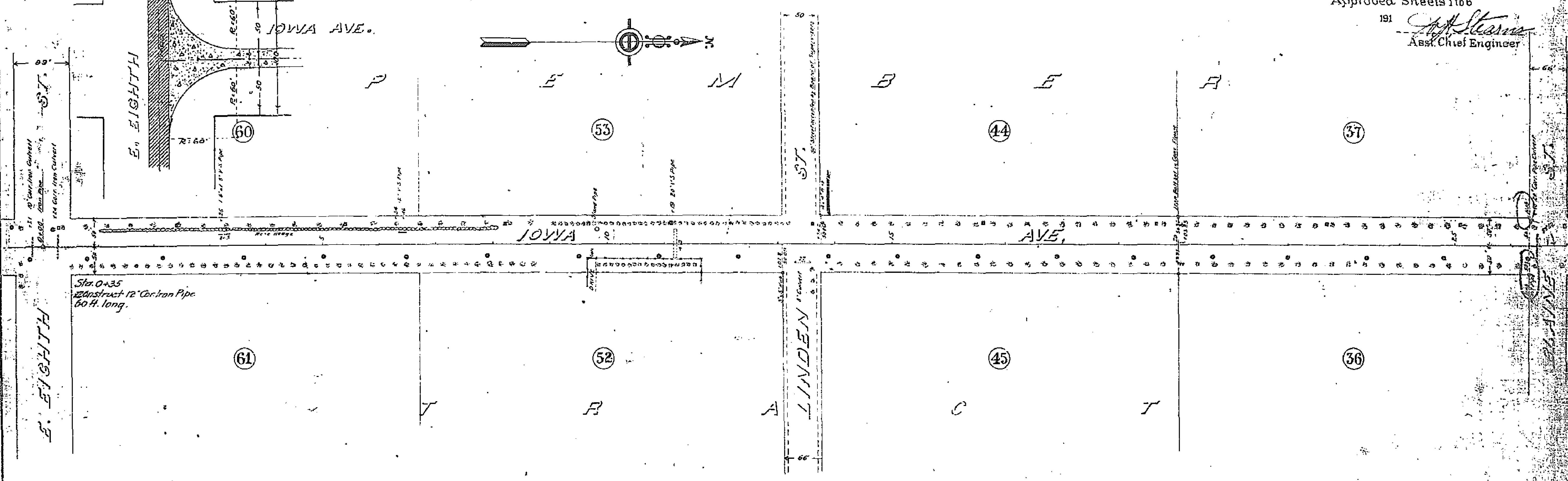
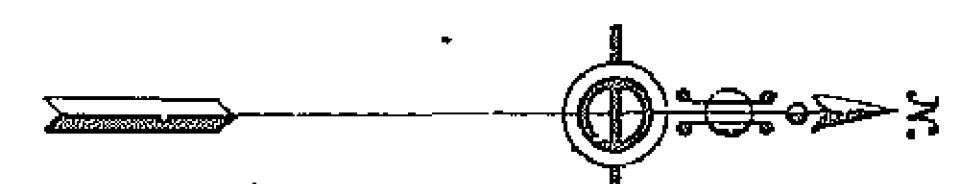
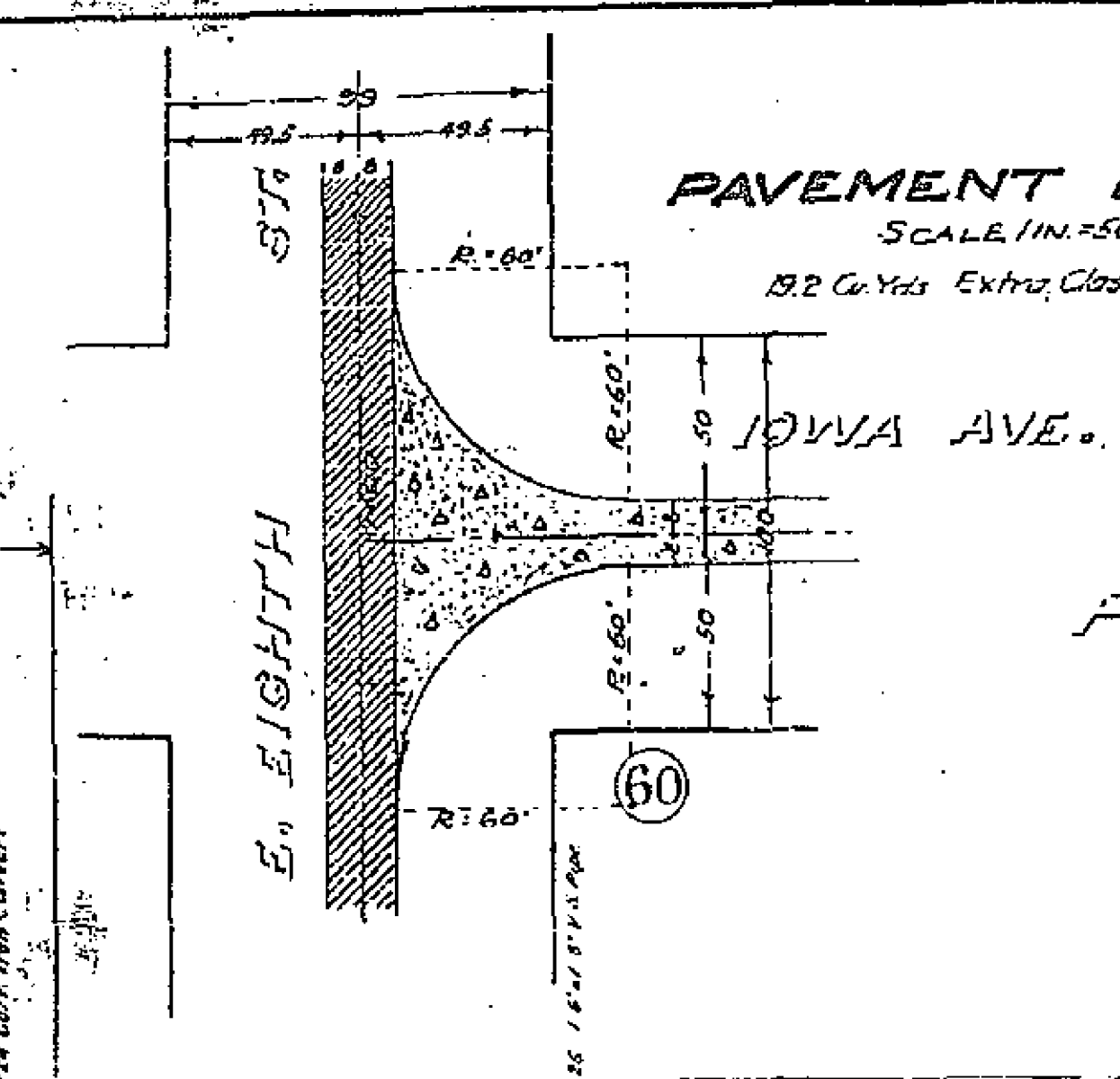
Columbia
 3479.25
 Webb

Station	Elevation	Grade (%)
28+00	977.05	-1.46%
28+10	977.05	-1.46%
28+20	977.05	-1.46%
28+30	977.05	-1.46%
28+40	977.05	-1.46%
28+50	977.05	-1.46%
28+60	977.05	-1.46%
28+70	977.05	-1.46%
28+80	977.05	-1.46%
28+90	977.05	-1.46%
29+00	977.05	-1.46%
29+10	977.05	-1.46%
29+20	977.05	-1.46%
29+30	977.05	-1.46%
29+40	977.05	-1.46%
29+50	977.05	-1.46%
29+60	977.05	-1.46%
29+70	977.05	-1.46%
29+80	977.05	-1.46%
29+90	977.05	-1.46%
30+00	977.05	-1.46%
30+10	977.05	-1.46%
30+20	977.05	-1.46%
30+30	977.05	-1.46%
30+40	977.05	-1.46%
30+50	977.05	-1.46%
30+60	977.05	-1.46%
30+70	977.05	-1.46%
30+80	977.05	-1.46%
30+90	977.05	-1.46%
31+00	977.05	-1.46%
31+10	977.05	-1.46%
31+20	977.05	-1.46%
31+30	977.05	-1.46%
31+40	977.05	-1.46%
31+50	977.05	-1.46%
31+60	977.05	-1.46%
31+70	977.05	-1.46%
31+80	977.05	-1.46%
31+90	977.05	-1.46%
32+00	977.05	-1.46%
32+10	977.05	-1.46%
32+20	977.05	-1.46%
32+30	977.05	-1.46%
32+40	977.05	-1.46%
32+50	977.05	-1.46%
32+60	977.05	-1.46%
32+70	977.05	-1.46%
32+80	977.05	-1.46%
32+90	977.05	-1.46%
33+00	977.05	-1.46%
33+10	977.05	-1.46%
33+20	977.05	-1.46%
33+30	977.05	-1.46%
33+40	977.05	-1.46%
33+50	977.05	-1.46%
33+60	977.05	-1.46%
33+70	977.05	-1.46%
33+80	977.05	-1.46%
33+90	977.05	-1.46%
34+00	977.05	-1.46%
34+10	977.05	-1.46%
34+20	977.05	-1.46%
34+30	977.05	-1.46%
34+40	977.05	-1.46%
34+50	977.05	-1.46%
34+60	977.05	-1.46%
34+70	977.05	-1.46%
34+80	977.05	-1.46%
34+90	977.05	-1.46%
35+00	977.05	-1.46%
35+10	977.05	-1.46%
35+20	977.05	-1.46%
35+30	977.05	-1.46%
35+40	977.05	-1.46%
35+50	977.05	-1.46%
35+60	977.05	-1.46%
35+70	977.05	-1.46%
35+80	977.05	-1.46%
35+90	977.05	-1.46%
36+00	977.05	-1.46%
36+10	977.05	-1.46%
36+20	977.05	-1.46%
36+30	977.05	-1.46%
36+40	977.05	-1.46%
36+50	977.05	-1.46%
36+60	977.05	-1.46%
36+70	977.05	-1.46%
36+80	977.05	-1.46%
36+90	977.05	-1.46%
37+00	977.05	-1.46%
37+10	977.05	-1.46%
37+20	977.05	-1.46%
37+30	977.05	-1.46%
37+40	977.05	-1.46%
37+50	977.05	-1.46%
37+60	977.05	-1.46%
37+70	977.05	-1.46%
37+80	977.05	-1.46%
37+90	977.05	-1.46%
38+00	977.05	-1.46%
38+10	977.05	-1.46%
38+20	977.05	-1.46%
38+30	977.05	-1.46%
38+40	977.05	-1.46%
38+50	977.05	-1.46%
38+60	977.05	-1.46%
38+70	977.05	-1.46%
38+80	977.05	-1.46%
38+90	977.05	-1.46%
39+00	977.05	-1.46%
39+10	977.05	-1.46%
39+20	977.05	-1.46%
39+30	977.05	-1.46%
39+40	977.05	-1.46%
39+50	977.05	-1.46%
39+60	977.05	-1.46%
39+70	977.05	-1.46%
39+80	977.05	-1.46%
39+90	977.05	-1.46%
40+00	977.05	-1.46%
40+10	977.05	-1.46%
40+20	977.05	-1.46%
40+30	977.05	-1.46%
40+40	977.05	-1.46%
40+50	977.05	-1.46%
40+60	977.05	-1.46%
40+70	977.05	-1.46%
40+80	977.05	-1.46%
40+90	977.05	-1.46%
41+00	977.05	-1.46%
41+10	977.05	-1.46%
41+20	977.05	-1.46%
41+30	977.05	-1.46%
41+40	977.05	-1.46%
41+50	977.05	-1.46%
41+60	977.05	-1.46%
41+70	977.05	-1.46%
41+80	977.05	-1.46%
41+90	977.05	-1.46%
42+00	977.05	-1.46%
42+10	977.05	-1.46%
42+20	977.05	-1.46%
42+30	977.05	-1.46%
42+40	977.05	-1.46%
42+50	977.05	-1.46%
42+60	977.05	-1.46%
42+70	977.05	-1.46%
42+80	977.05	-1.46%
42+90	977.05	-1.46%
43+00	977.05	-1.46%
43+10	977.05	-1.46%
43+20	977.05	-1.46%
43+30	977.05	-1.46%
43+40	977.05	-1.46%
43+50	977.05	-1.46%
43+60	977.05	-1.46%
43+70	977.05	-1.46%
43+80	977.05	-1.46%
43+90	977.05	-1.46%
44+00	977.05	-1.46%
44+10	977.05	-1.46%
44+20	977.05	-1.46%
44+30	977.05	-1.46%
44+40	977.05	-1.46%
44+50	977.05	-1.46%
44+60	977.05	-1.46%
44+70	977.05	-1.46%
44+80	977.05	-1.46%
44+90	977.05	-1.46%
45+00	977.05	-1.46%
45+10	977.05	-1.46%
45+20	977.05	-1.46%
45+30	977.05	-1.46%
45+40	977.05	-1.46%
45+50	977.05	-1.46%
45+60	977.05	-1.46%
45+70	977.05	-1.46%
45+80	977.05	-1.46%
45+90	977.05	-1.46%
46+00	977.05	-1.46%
46+10	977.05	-1.46%
46+20	977.05	-1.46%
46+30	977.05	-1.46%
46+40	977.05	-1.46%
46+50	977.05	-1.46%
46+60	977.05	-1.46%
46+70	977.05	-1.46%
46+80	977.05	-1.46%
46+90	977.05	-1.46%
47+00	977.05	-1.46%
47+10	977.05	-1.46%
47+20	977.05	-1.46%
47+30	977.05	-1.46%
47+40	977.05	-1.46%
47+50	977.05	-1.46%
47+60	977.05	-1.46%
47+70	977.05	-1.46%
47+80	977.05	-1.46%
47+90	977.05	-1.46%
48+00	977.05	-1.46%
48+10	977.05	-1.46%
48+20	977.05	-1.46%
48+30	977.05	-1.46%
48+40	977.05	-1.46%
48+50	977.05	-1.46%
48+60	977.05	-1.46%
48+70	977.05	-1.46%
48+80	977.05	-1.46%
48+90	977.05	-1.46%
49+00	977.05	-1.46%
49+10	977.05	-1.46%
49+20	977.05	-1.46%
49+30	977.05	-1.46%
49+40	977.05	-1.46%
49+50	977.05	-1.46%
49+60	977.05	-1.46%
49+70	977.05	-1.46%
49+80	977.05	-1.46%
49+90	977.05	-1.46%
50+00	977.05	-1.46%
50+10	977.05	-1.46%
50+20	977.05	-1.46%
50+30	977.05	-1.46%
50+40	977.05	-1.46%
50+50	977.05	-1.46%
50+60	977.05	-1.46%
50+70	977.05	-1.46%
50+80	977.05	-1.46%
50+90	977.05	-1.46%
51+00	977.05	-1.46%
51+10	977.05	-1.46%
51+20	977.05	-1.46%
51+30	977.05	-1.46%
51+40	977.05	-1.46%
51+50	977.05	-1.46%
51+60	977.05	-1.46%
51+70	977.05	-1.46%
51+80	977.05	-1.46%
51+90	977.05	-1.46%
52+00	977.05	-1.46%
52+10	977.05	-1.46%
52+20	977.05	-1.46%
52+30	977.05	-1.46%
52+40	977.05	-1.46%
52+50	977.05	-1.46%
52+60	977.05	-1.46%
52+70	977.05	-1.46%
52+80	977.05	-1.46%
52+90	977.05	-1.46%
53+00	977.05	-1.46%
53+10	977.05	-1.46%
53+20	977.05	-1.46%
53+30	977.05	-1.46%
53+40	977.05	-1.46%
53+50	977.05	-1.46%
53+60	977.05	-1.46%
53+70	977.05	-1.46%
53+80	977.05	-1.46%
53+90	977.05	-1.46%
54+00	977.05	-1.46%
54+10	977.05	-1.46%
54+20	977.05	-1.46%
54+30	977.05	-1.46%
54+40	977.05	-1.46%
54+50	977.05	-1.46%
54+60	977.05	-1.46%
54+70	977.05	-1.46%
54+80	977.05	-1.46%
54+90	977.05	-1.46%
55+00	977.05	-1.46%
55+10	977.05	-1.46%
55+20	977.05	-1.46%
55+30	977.05	-1.46%
55+40	977.05	-1.46%
55+50	977.05	-1.46%
55+60	977.05	-1.46%
55+70	977.05	-1.46%
55+80	977.05	-1.46%
55+90	977.05	-1.46%
56+00	977.05	-1.46%
56+10	977.05	-1.46%
56+20	977.05	-1.46%
56+30	977.05	-1.46%
56+40	977.05	-1.46%
56+50	977.05	-1.46%
56+60	977.05	-1.46%
56+70	977.05	-1.46%
56+80	977.05	-1.46%
56+90	977.05	-1.46%
57+00	977.05	-1.46%
57+10	977.05	-1.46%
57+20	977.05	-1.46%
57+30	977.05	-1.46%
57+40	977.05	-1.46%
57+50	977.05	-1.46%
57+60	977.05	-1.46%
57+70	977.05	-1.46%
57+80	977.05	-1.46%
57+90	977.05	-1.46%
58+00	977.05	-1.46%
58+10	977.05	-1.46%
58+20	977.05	-1.46%
58+30	977.05	-1.46%
58+40	977.05	-1.46%
58+50	977.05	-1.46%
58+60	977.05	-1.46%
58+70	977.05	-1.46%
58+80	977.05	-1.46%
58+90	977.05	-1.46%
59+00	977.05	-1.46%
59+10	977.05	-1.46%
59+20	977.05	-1.46%
59+30	977.05	-1.46%
59+40	977.05	-1.46%
59+50	977.05	-1.46%
59+60	977.05	-1.46%
59+70	977.05	-1.46%
59+80	977.05	-1.46%
59+90	977.05	-1.46%
60+00	977.05	-1.46%
60+10	977.05	-1.46%
60+20	977.05	-1.46%
60+30	977.05	-1.46%
60+40	977.05	-1.46%
60+50	977.05	-1.46%
60+60	977.05	-1.46%
60+70	977.05	-1.46%
60+80	977.05	-1.46%
60+90	977.05	-1.46%
61+00	977.05	-1.46%
61+10	977.05	-1.46%
61+20		

ROUTE #13
 IOWA AVE. FROM EIGHTH STREET
 TO SAN BERNARDINO COUNTYLINE
 Approved Sheets 1106

191
A. J. Stearns
 Asst. Chief Engineer

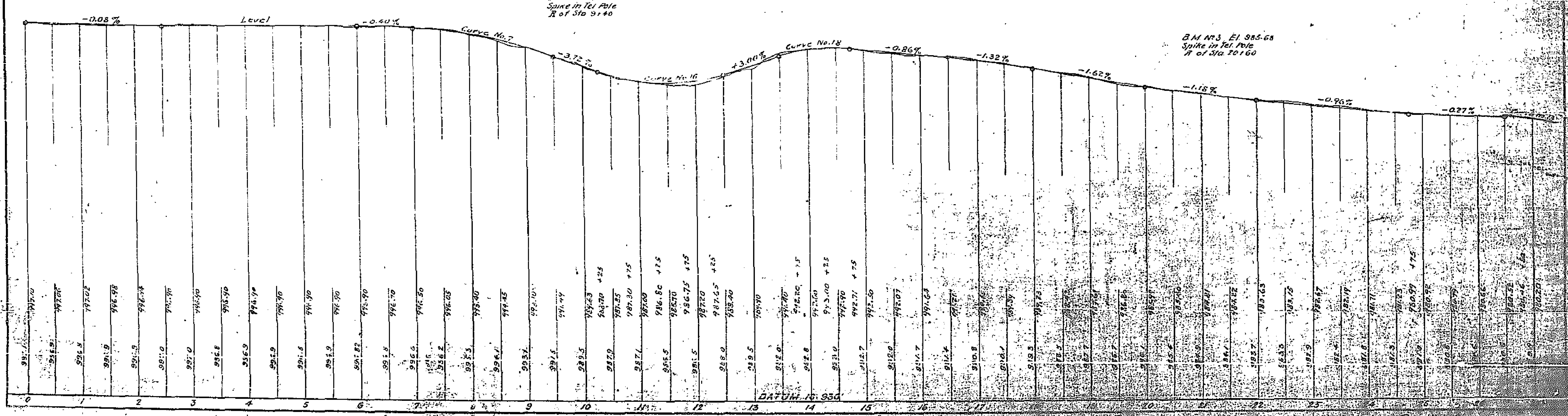
PAVEMENT LAYOUT
 SCALE 1/4" = 10 FT.
 19.2 Cu Yds Extra Class B Concrete.

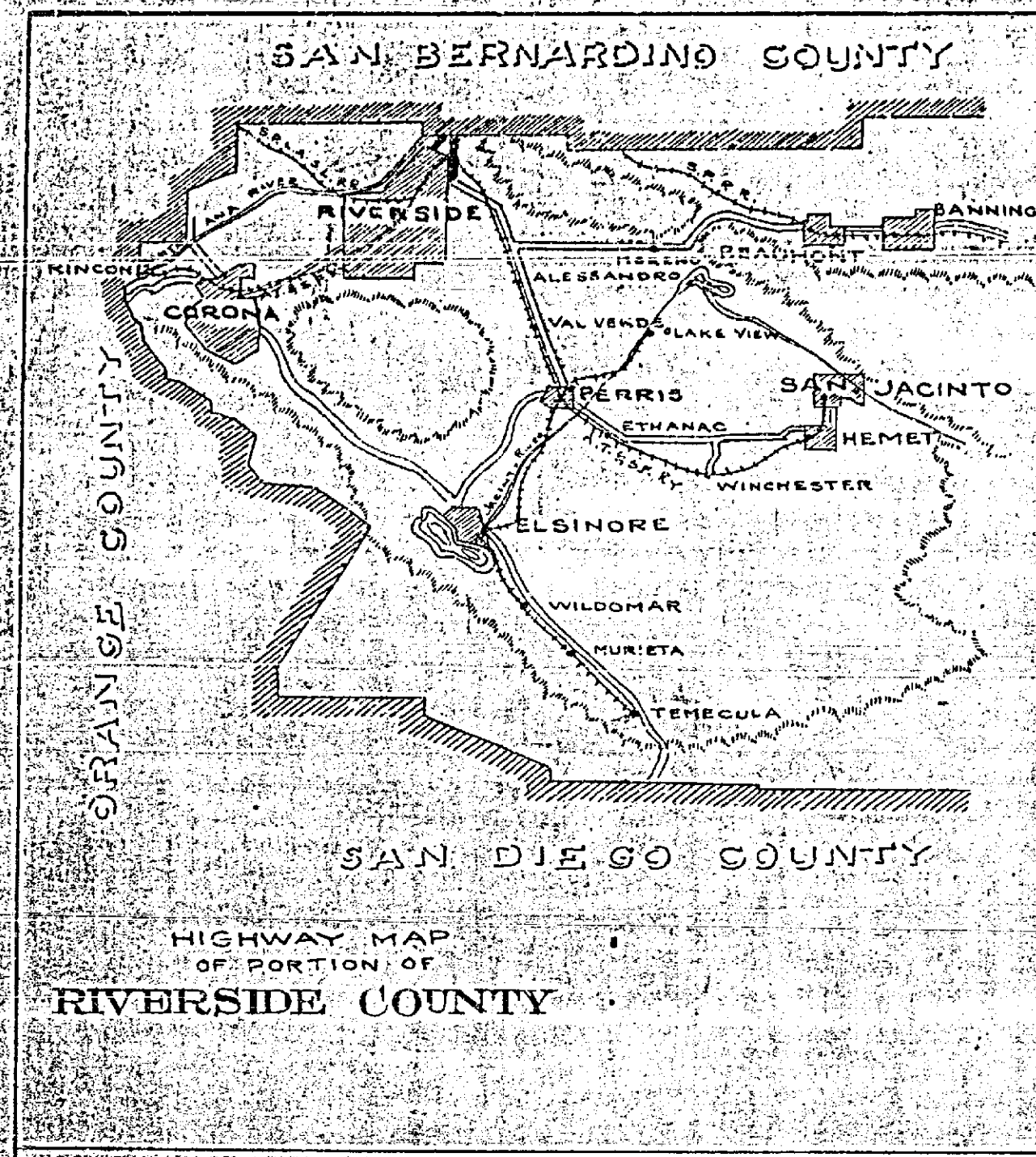


B.M. No. 1 El. 996.29
 Spike in Tel. Pole 71366
 L. of Sta. 0+125

B.M. No. 2 El. 991.91
 Spike in Tel. Pole
 R. of Sta. 9+40

B.M. No. 3 El. 985.68
 Spike in Tel. Pole
 R. of Sta. 20+60





RIVERSIDE COUNTY HIGHWAY COMMISSION
PLAN AND PROFILE
 showing proposed improvement of
ROUTES NO. 13 AND NO. 14
RIVERSIDE TO SAN BERNARDINO CO. LINE
IOWA AVE. - E. EIGHTH ST. TO COLTON AVE.

Scales
 PLAN: 1 inch = 100 feet
 PROFILE: HOR. 1 inch = 100 feet VERT. 1 inch = 10 feet

Approved: Aug. 13, 1915
W. M. Pearson
 Chief Engineer
 Highway Commission

CONTRACT NO. 177

Approximate Quantities

1. 7870 cu. yd. Excavation
2. 18873 cu. yd. Gravel
3. 52 cu. yd. Classed Concrete
4. 3771 cu. yd. Class B Concrete (Paving)
5. 5 cu. yd. Class E Concrete (Culverts)
6. 1204 in. dia. Iron Pipe
7. 30 to 12 in. dia. Iron Pipe
8. 7 Placing 13400 lbs Rein. Steel
9. 100 cu. ft. Gravel
10. 20 in. dia. Pipe
11. 1000 ft. Railings

