

REMOVE EXISTING CURB, GUTTER AND SIDEWALK AND REPLACE WITH DRIVEWAY APPROACH PER C/R STD. DIV. NO. 500

REMOVE EXISTING DRIVEWAY APPROACH AND REPLACE WITH CURB AND GUTTER TO MEET EXIST. (C/R)

REMOVE EXISTING CURB, GUTTER AND SIDEWALK AND REPLACE WITH DRIVEWAY APPROACH PER C/R STD. DIV. NO. 500

- NOTES:**
- 1 - 3 PALM TREES ON ORANGE ST. THAT INTERFERE WITH PROPOSED DRIVEWAY APPROACHES TO BE REMOVED.
 - 2 - 10 ITALIAN CYPRESS ON WEST SIDE OF ORANGE ST. BETWEEN 15TH ST. AND 14TH ST. TO BE REMOVED.
 - 3 - 4 ITALIAN CYPRESS ON SOUTHERLY SIDE OF 15TH ST. BETWEEN ORANGE ST. AND ALLEY TO BE REMOVED.
 - 4 - SIDEWALK WHICH IS TO BE REPLACED SHALL MATCH EXISTING SIDEWALK IN WIDTH & GRADING.
 - 5 - ALL DRIVEWAYS TO BE GRADED & LEVELED IN ACCORDANCE WITH C/R STD.
 - 6 - SIDEWALK, CURB & GUTTER WHICH IS BROKEN OR OTHERWISE DAMAGED DURING THIS GRADING OR CONSTRUCTION SHALL BE REPLACED AS DIRECTED IN FIELD.
 - 7 - CONCRETE REMOVALS SHALL BE AT SAW CUTS.

QUANTITY ESTIMATE
SHEET 2 OF 2

7 CONC SIDEWALK	625 S.F.
DRIVEWAY APPROACHES (2)	815 S.F.
REMOVE EXIST. SIDEWALK	973 S.F.
REMOVE EXIST. DRIVEWAY APPROACH	170 S.F.
REMOVE EXIST. CB. & GTE.	635 S.F.
REMOVE ITALIAN CYPRESS TREES	14 EA.
REMOVE PALM TREES	3 EA.
MIX. CONC. REMOVAL	U.S.

APPROVED BY *Edith P. King*
DATE 3-20-61

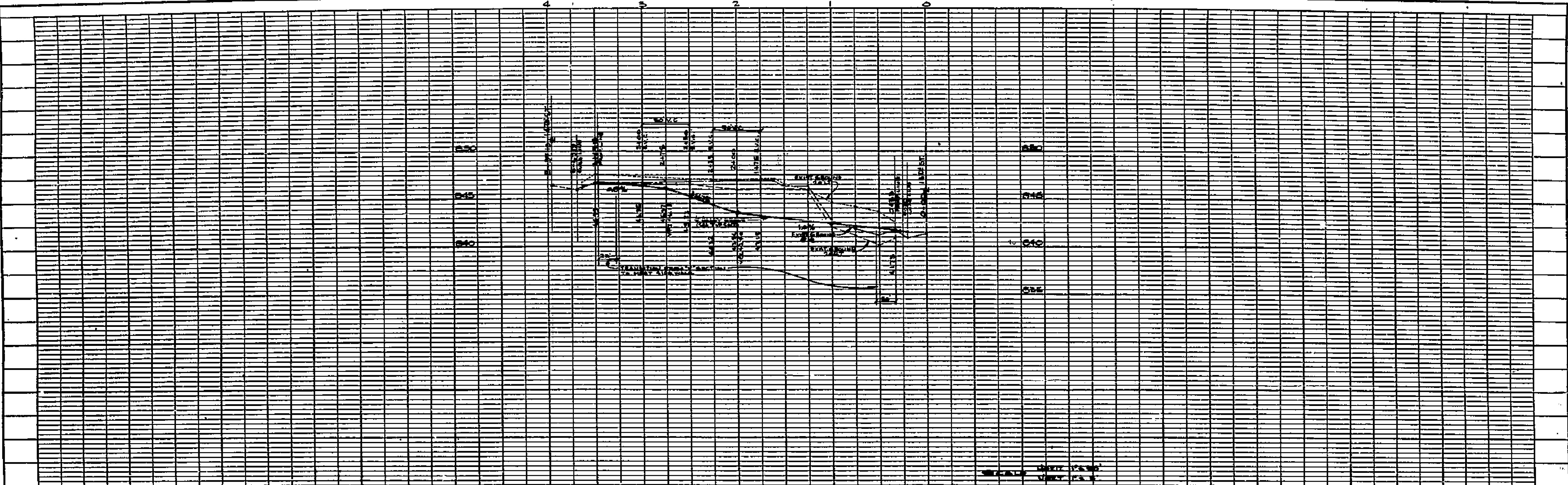
ALBERT A. WEBB ASSOCIATES
CIVIL ENGINEERS - RIVERSIDE, CALIFORNIA
APPROVED *Albert A. Webb* DATE 2/28/61

REVISION		DESCRIPTION
MARK	DATE	

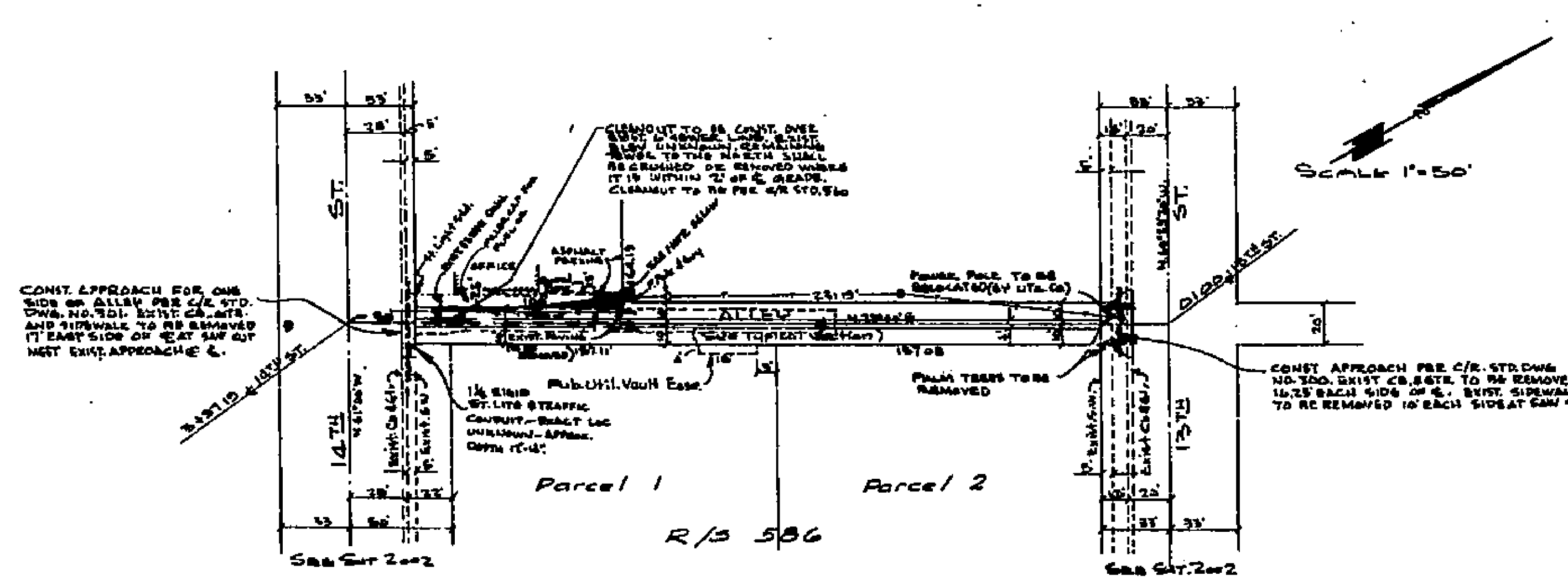
CITY OF RIVERSIDE, CALIFORNIA
DEPARTMENT OF PUBLIC WORKS

PARKWAY IMPROVEMENTS
FOR
Rec. of Survey No. 586

DATE	FEB 1961	SCALE	1"=50'	APPROVED BY	<i>W. D. ...</i>
DRAWN	<i>dw</i>	W.D.	60-16B	DIRECTOR OF PUBLIC WORKS	NO. R-453
CHECKED	<i>...</i>	T.M.	DTZ/70	DATE	3/21/61
					SHEET 2 OF 2

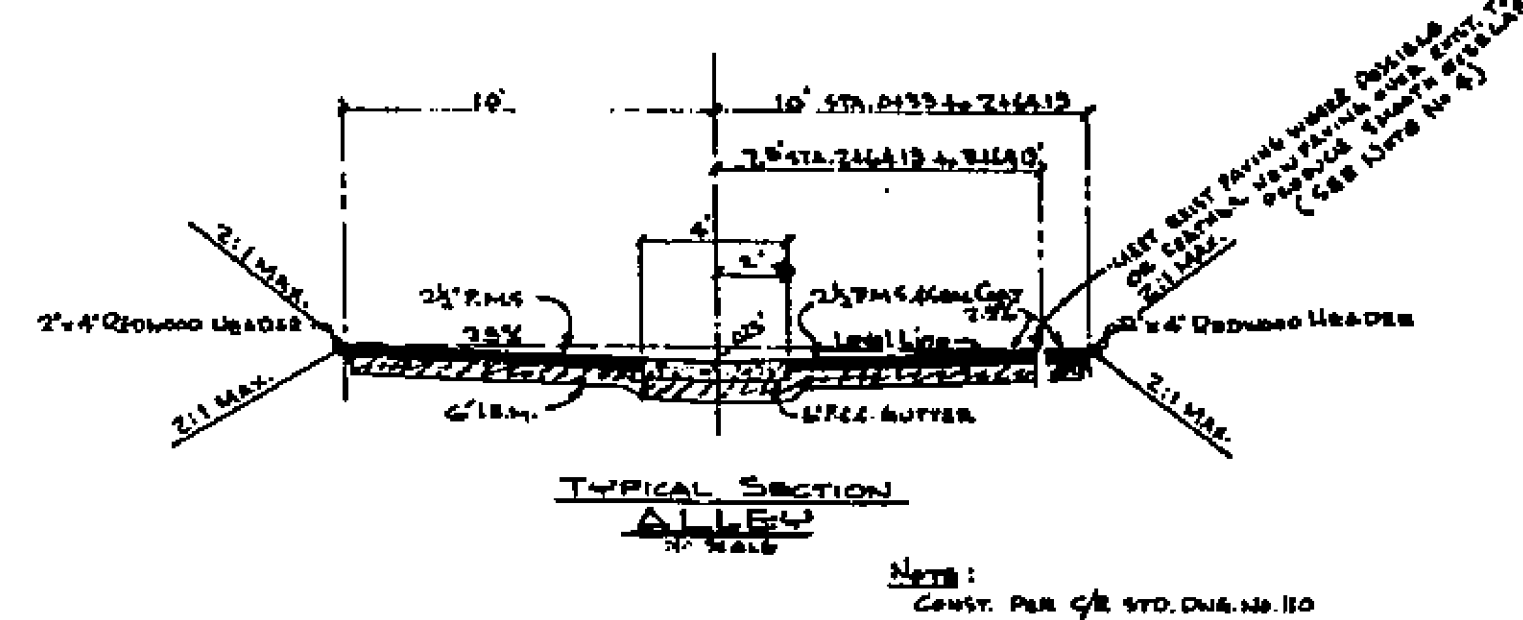


PROFILE	DATE



BENCH MARK
 5 1/2" IN EAST CURB DEANES GROVE ST.
 25' SOUTH OF SOUTH PROP. LINE 14th ST.
 ELEV. 851.058

- GENERAL NOTES**
- IT SHALL BE THE RESPONSIBILITY OF THE CONTRACTOR TO CLEAR THE RIGHT OF WAY IN ACCORDANCE WITH THE PROVISIONS OF LAW AS IT AFFECTS EACH UTILITY INCLUDING IRRIGATION LINES AND APPURTENANCES AND AT NO COST TO CITY.
 - CONSTRUCTION SHALL BE IN ACCORDANCE WITH THE CITY OF RIVERSIDE DEPARTMENT OF PUBLIC WORKS SPECIFICATIONS NO. 620 AND STANDARD DRAWINGS.
 - IF SUBDIVIDER WISHES TO REDUCE REQUIREMENTS FOR IMPACTED BASE MATERIAL, ADDITIONAL SOIL TESTS MAY BE TAKEN AT THE EXPENSE OF THE SUBDIVIDER. AFTER THE STREETS ARE PREPARED TO GRADE, SUBDIVIDER WILL CONTACT INSPECTOR DIV. CITY OF RIVERSIDE BEFORE MAKING TESTS. THE CITY OF RIVERSIDE WILL MAKE A TEST OF BASE MATERIAL IN PLACE BEFORE PAVING CAN BE INSTALLED. RESULTS OF THIS TEST MUST INDICATE THAT BASE MATERIAL IS SATISFACTORY TO THE INSPECTOR DIVISION.
 - SHADED AREA DENOTES EXISTING PAVEMENT TO BE REMOVED AND REPLACED IN WORKMANLIKE MANNER TO FULFILL ACCESS TO EXISTING PARKING AREAS. PERMISSIONS FOR THIS REMOVAL & REPLACEMENT OBTAINED BY TOWN ENGINEER ON CO. 782. LETTER ON FILE AT PUBLIC WORKS DEPT. CITY OF RIVERSIDE. THIS LETTER PROVIDES THAT THIS WORK SHALL BE DONE AT NO COST TO SAID COMPANY.



QUANTITY ESTIMATE - SHEET 1 OF 2

4" CONCRETE GUTTER	881.0 L.F.
CONCRETE APPROACHES	46.5 S.F.
2 1/2" P.M.S. 4" SEAL COAT	52.12 S.F.
IMPORTED BASE MATERIAL	156 C.Y.
1" 4" REDUCED LEADER	562 L.F.
REMOVE CONC. CO. 4-6" E	50 L.F.
REMOVE SIDEWALK	185 S.F.
REMOVE EXISTING PAVING	2800 S.F.
REMOVE PALM TREES	2 EA.
CLEANOUT, STD. 500	1 EA.

APPROVED: *Albert A. Weiss*
 DATE: 3-20-61
ALBERT A. WEISS ASSOCIATES
 CIVIL ENGINEERS - RIVERSIDE, CALIFORNIA
 APPROVED: *City Engineer* DATE: 3/22/61

REVISION		DESCRIPTION	CITY OF RIVERSIDE, CALIFORNIA DEPARTMENT OF PUBLIC WORKS
MARK	DATE		
<p align="center">ALLEY FROM 13th ST. TO 14th ST. BETWEEN MAIN ST. AND DEANES ST. R/S 586</p>			<p align="center">APPROVED BY <i>City Engineer</i> DATE: 3/21/61</p>
DATE	FEB-1961	SCALE	1"=50'
DRAWN	dl	NO.	60-165
CHECKED		BY	572/70
		DATE	3/21/61
			NO. R-453
			SHEET 1 OF 2

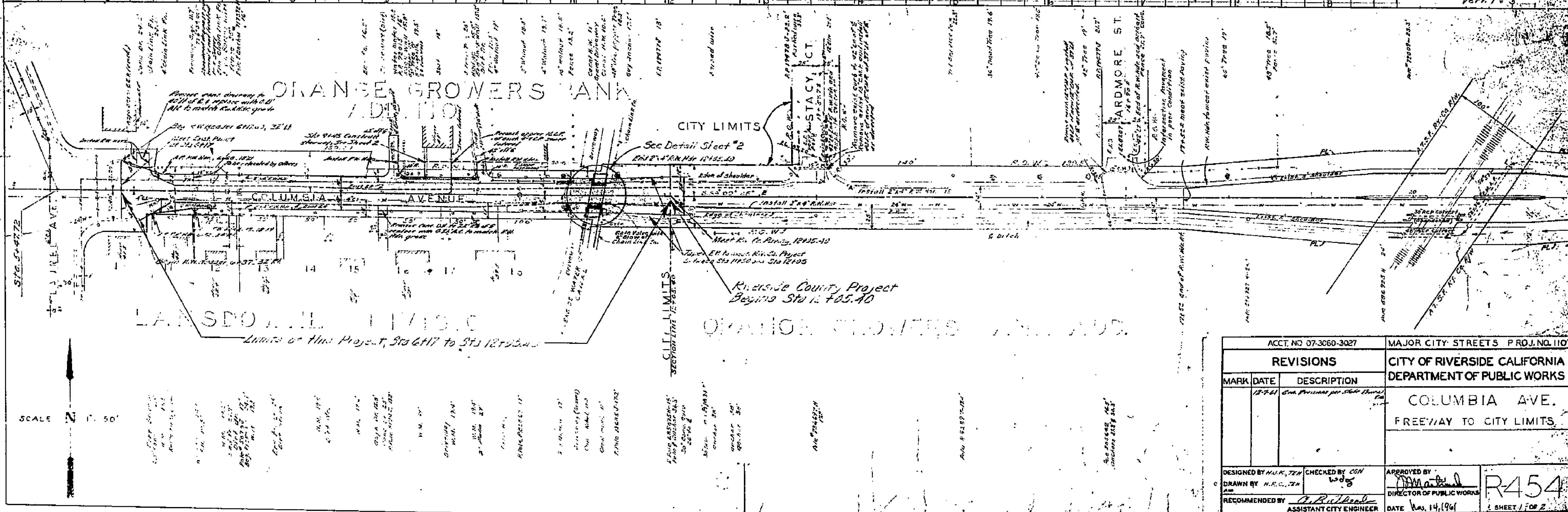
PLAN	DATE

LEGEND
 GRADY
 CURB
 SIDEWALK
 DRIVEWAY
 DRIVEWAY
 DRIVEWAY
 DRIVEWAY



- Notes:**
- Remove private fence and reset along the property line from Sta. 1275+00.00 to Sta. 1275+50.00. Reestablish line of private fence at Sta. 1275+50.00.
 - Remove the fence and reset at Sta. 1275+50.00.
 - Do not install R.W. line in front of improved driveways (Sta. 1275+50.00 to Sta. 1275+75.00).
 - Use same cut when removing portions of these driveways.
 - Regrade shoulders to grade of Sta. 1275+50.00.
- T.C. N. 3" Iron rod in N.E. corner of corner 300' x 100' of Stacy St. Ch. Columbia Ave. Sta. 1275+50.00
 F.B. 0/34-60, R.R. 3276, P. 216
 Scale: Hor. 1" = 50' Vert. 1" = 5'

MAP
 SECTION
 SECTION
 SECTION
 SECTION



ACCT. NO. 07-3060-3027		MAJOR CITY STREETS PROJ. NO. 110	
REVISIONS			
MARR.	DATE	DESCRIPTION	
	7-7-61	Rev. Permits for 20' wide curb	
		CITY OF RIVERSIDE CALIFORNIA DEPARTMENT OF PUBLIC WORKS	
		COLUMBIA AVE. FREEWAY TO CITY LIMITS	
DESIGNED BY	CHECKED BY	APPROVED BY	
DRAWN BY	W.J.S.	R-454	
RECOMMENDED BY	ASSISTANT CITY ENGINEER	DATE 6/14/61 SHEET 1 OF 2	