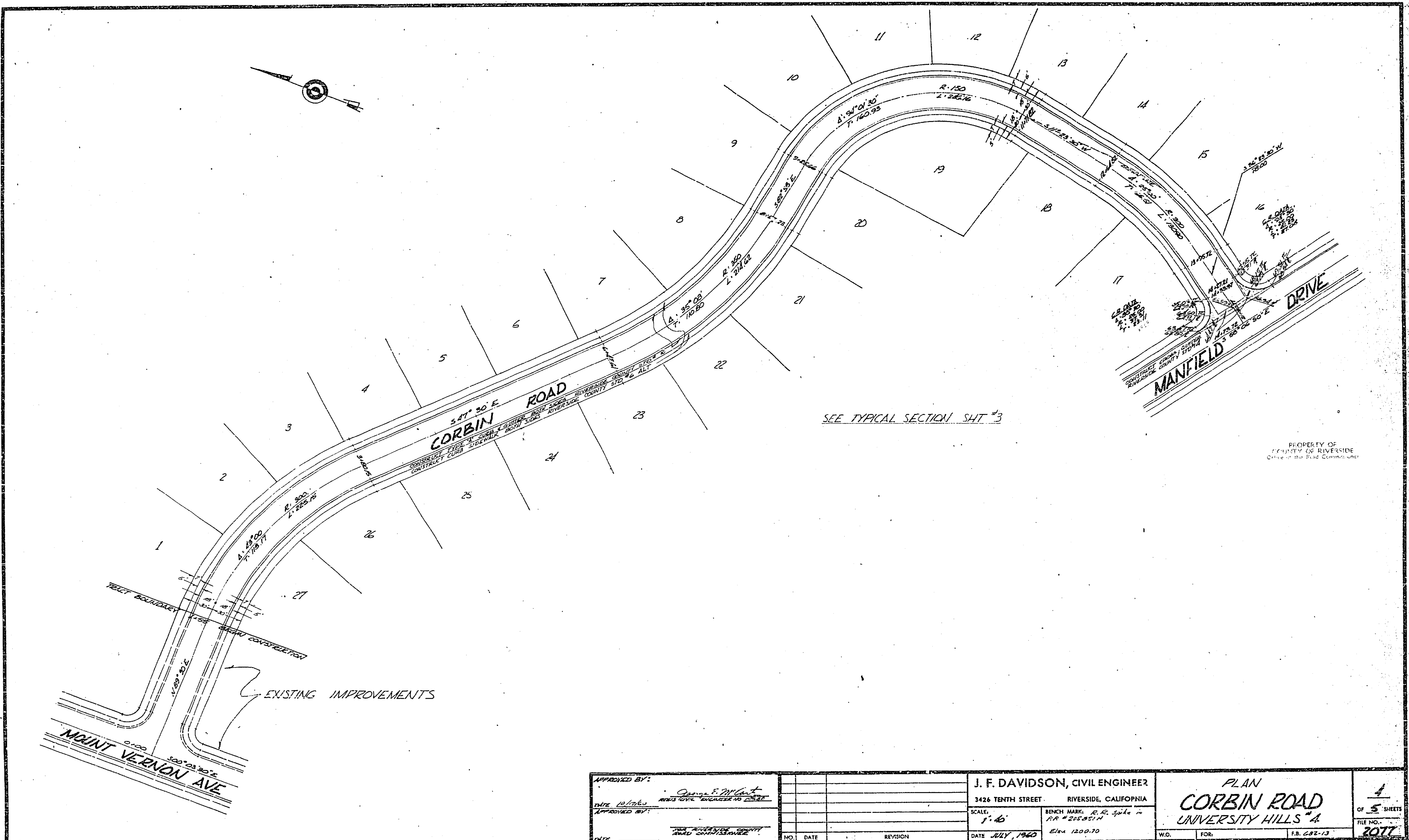


APPROVED BY: <i>George E. McArthur</i> REGISTERED CIVIL ENGINEER NO. 10042	J. F. DAVIDSON, CIVIL ENGINEER 3426 TENTH STREET RIVERSIDE, CALIFORNIA	PLAN & PROFILE MANFIELD DRIVE UNIVERSITY HILLS UNIT 4	2 OF 5 SHEETS
DATE: 10/1/60	SCALE: 1" = 40'	BENCH MARK: B.M. Spike in RR # 205851 W Elev. 1200.70	FILE NO. 2072
APPROVED BY:	RIVERSIDE COUNTY, CALIF. FOR ROAD COMMISSIONER	DATE: 9/30/60	W.O. FOR: F.S. 282-13

PROPERTY OF
COUNTY OF RIVERSIDE
Office of the Road Commissioner

R-474



SEE TYPICAL SECTION SHT #3

PROPERTY OF
COUNTY OF RIVERSIDE
Office of the Road Commissioner

EXISTING IMPROVEMENTS
NEW CONSTRUCTION

APPROVED BY: <i>George F. P. Cant</i> DATE 10/17/60 APPROVED BY: DATE	J. F. DAVIDSON, CIVIL ENGINEER 3426 TENTH STREET RIVERSIDE, CALIFORNIA SCALE: 1" = 40' BENCH MARK: R.R. spike in RR # 205.0514 Elev 1200.70	PLAN CORBIN ROAD UNIVERSITY HILLS #A	1 OF 5 SHEETS FILE NO. 7077
FOR RIVERSIDE COUNTY ROAD COMMISSIONER	NO. DATE REVISION DATE JULY, 1960	W.O. FOR	E.R. 682-13

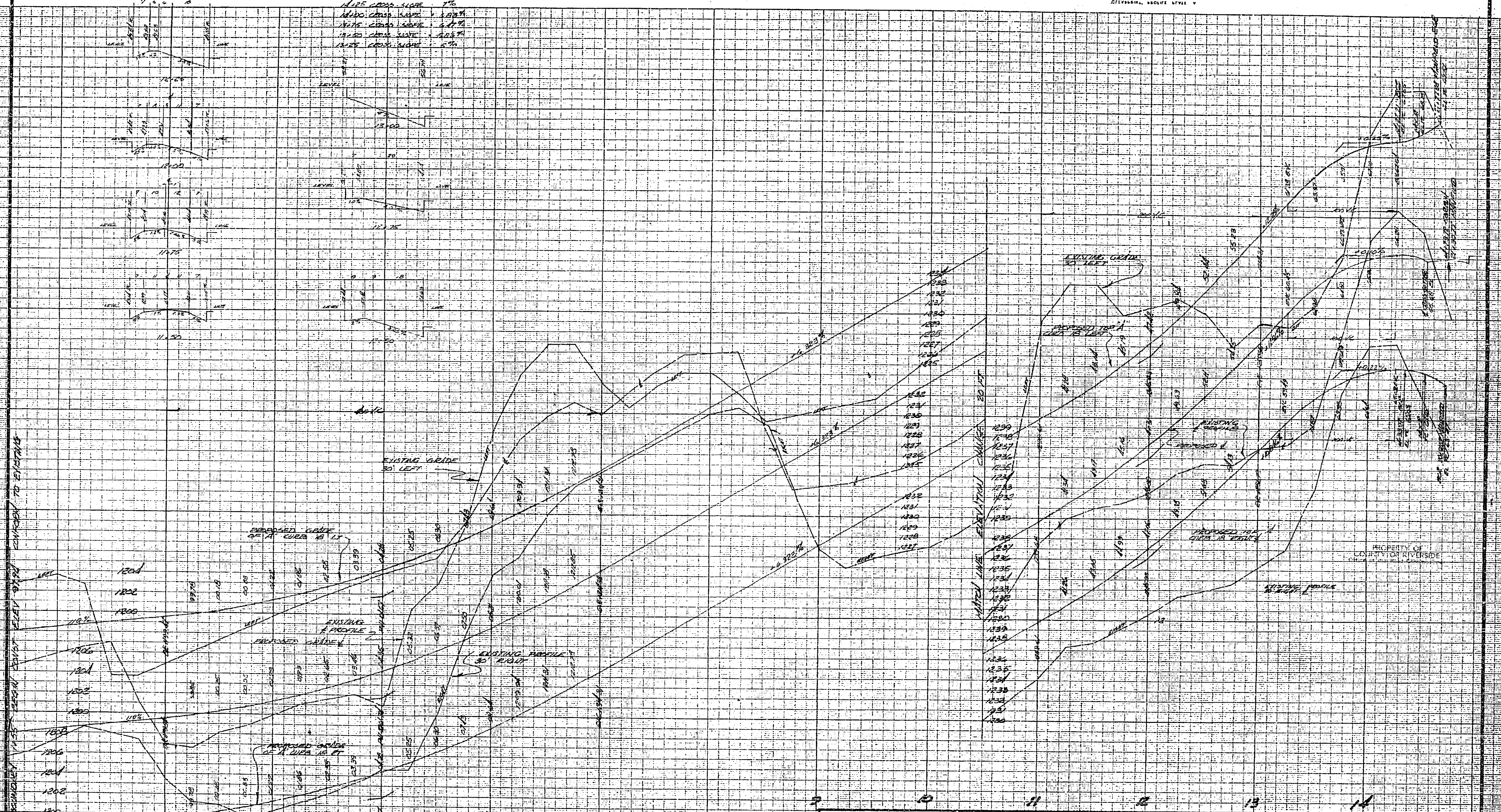
742-H
R-979

MADE IN U.S.A.
STEVENS & SPENCER CO.
EVANSTON, ILLINOIS U.S.A.

MADE IN U.S.A.
STEVENS & SPENCER CO.
EVANSTON, ILLINOIS U.S.A.

MADE IN U.S.A.
STEVENS & SPENCER CO.
EVANSTON, ILLINOIS U.S.A.

11.85 CROSS SLOPE 7%
11.80 CROSS SLOPE 1.0%
11.75 CROSS SLOPE 1.0%
11.70 CROSS SLOPE 1.0%
11.65 CROSS SLOPE 1.0%

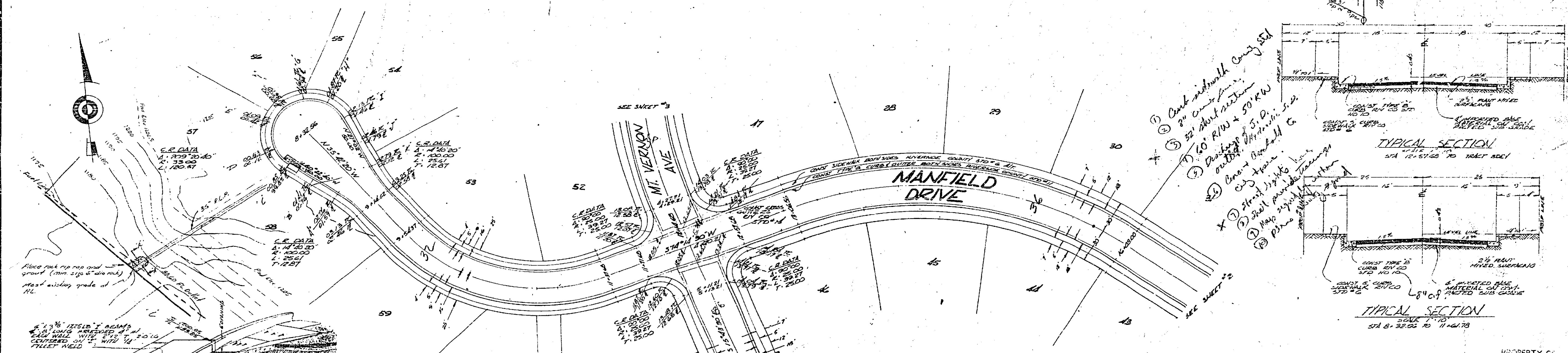
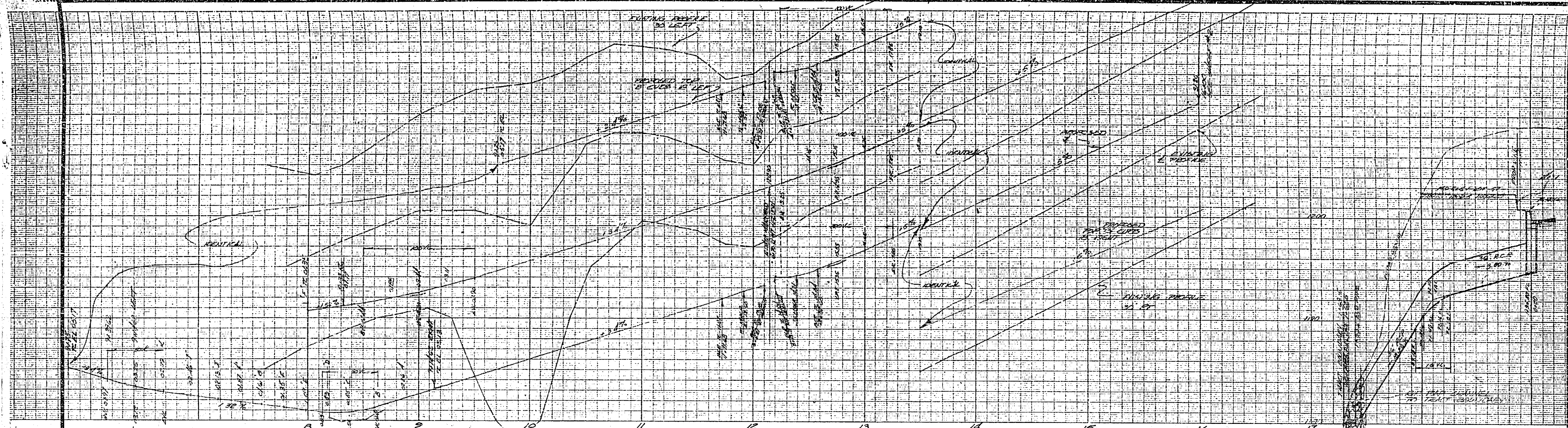


RIGHT BOUNDARY 1455' ELEVATION POINT STATION 1000 TO EXISTING

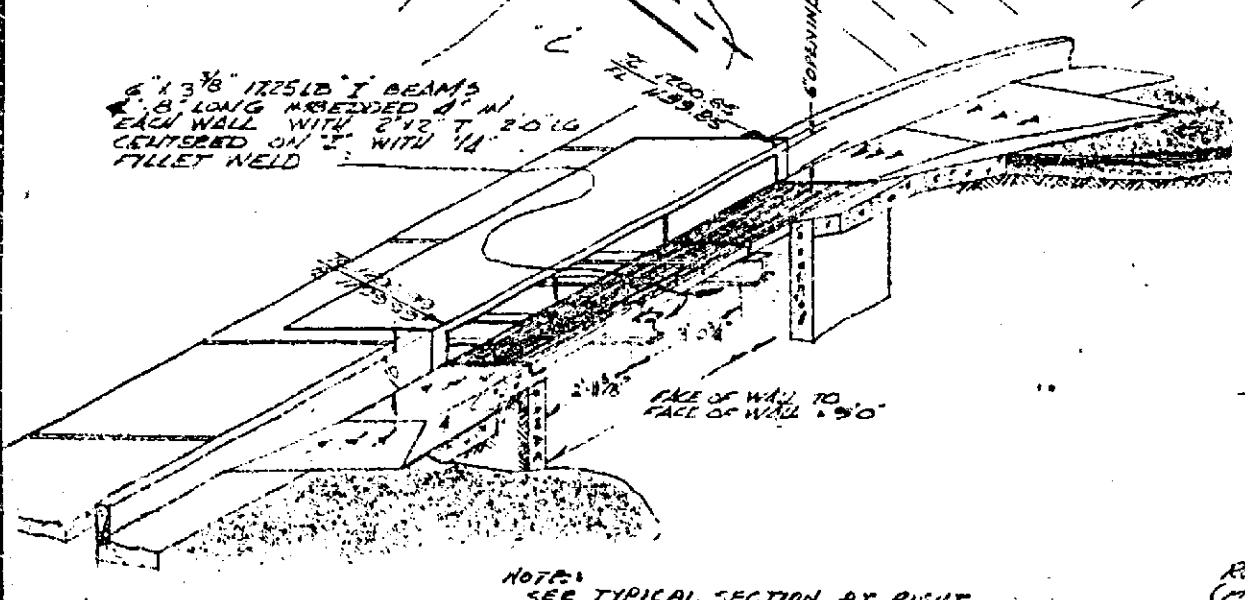
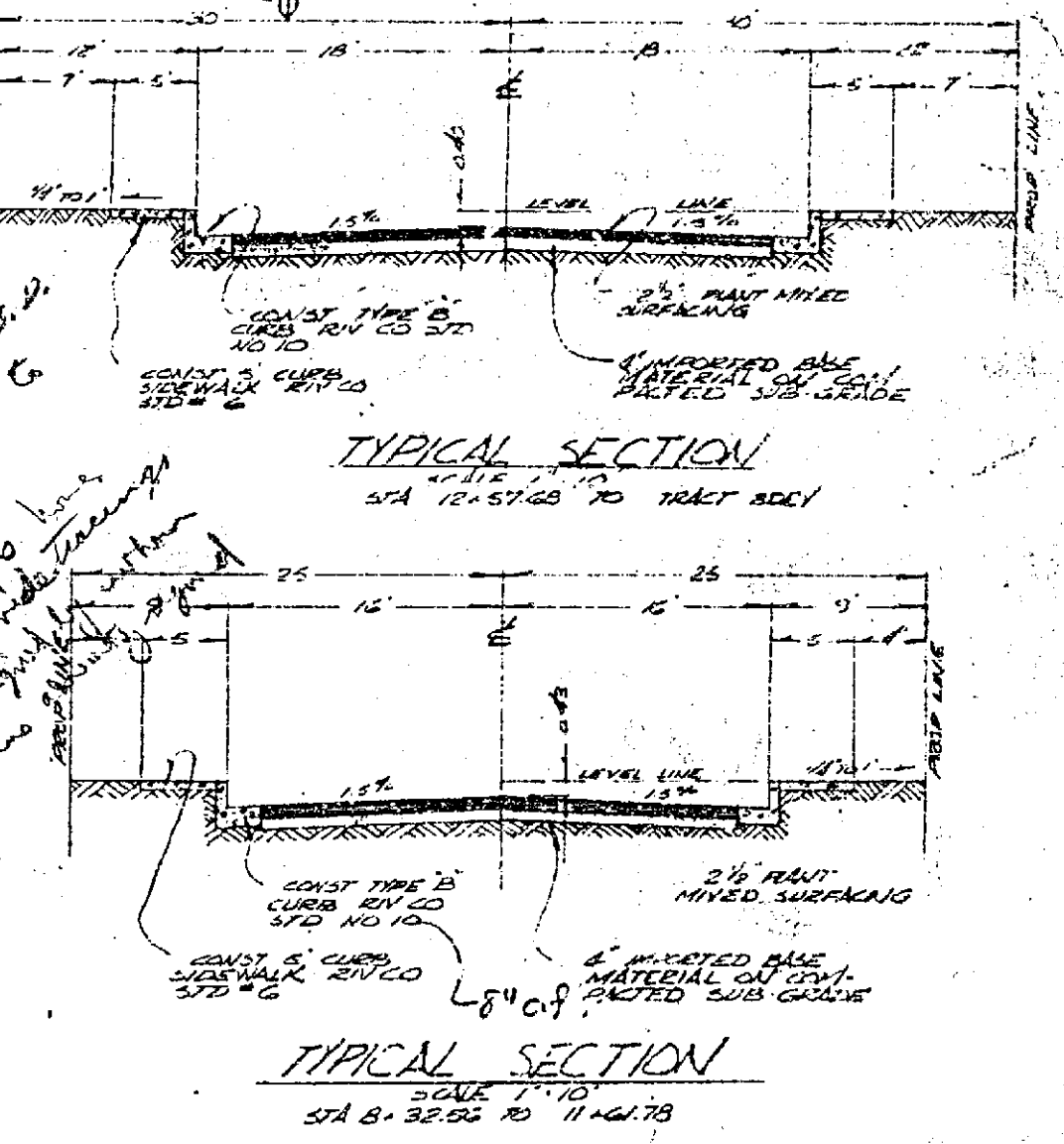
PROPERTY OF
COUNTY OF RIVERSIDE
CALIFORNIA

APPROVED BY <i>Charles E. Miller</i> REGISTERED CIVIL ENGINEER	V.F. DAVIDSON, CIVIL ENGINEER 348 1/2 Tenth Street Brea, Calif.	PROFILE CORBIN ROAD UNIVERSITY HILLS # 4	5 OF 5 SHEETS FILE NO. 8077
DATE: 12/17/60	SCALE: 1" = 40' 1" = 100'	ADJUDICATED R.R. 3/10/60 IN R.R. # 205851 H	
CITY OF RIVERSIDE COUNTY, CALIF. PUBLIC WORKS DEPARTMENT	DATE: 9/28/60	ELEV. 1200.70	

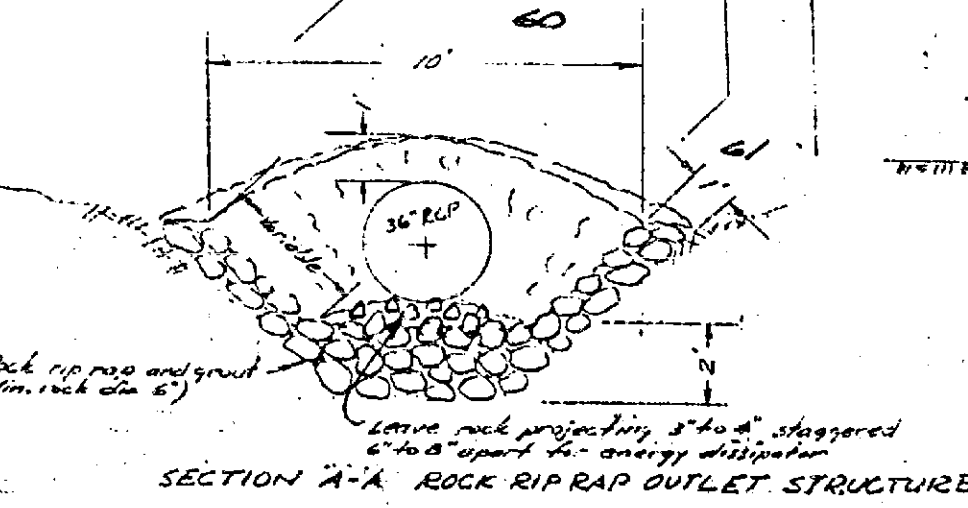
R-479 722-H



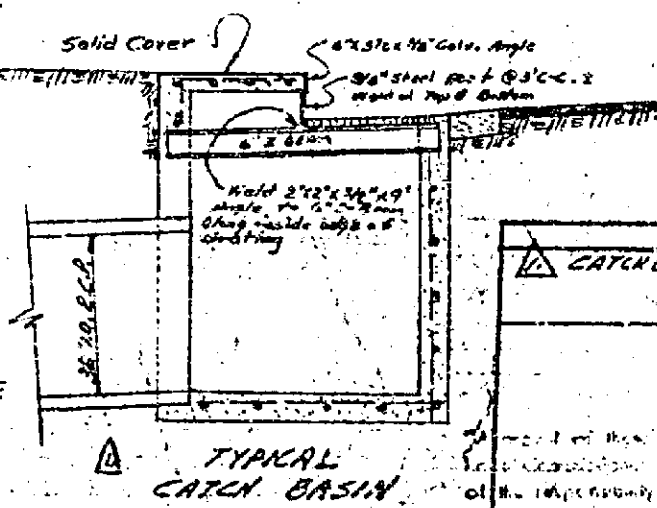
- ① 2" curb and sidewalk along S.E.
- ② 2" curb and sidewalk
- ③ 32" curb and sidewalk
- ④ 60" R/W + 50' R/W
- ⑤ 2" curb and sidewalk
- ⑥ 2" curb and sidewalk
- ⑦ 2" curb and sidewalk
- ⑧ 2" curb and sidewalk



CATCH BASIN DETAIL
Similar to Riv. Co. SH 420 Type B Approx
and Riv. Co. SH 421



SECTION A-A ROCK RIP RAP OUTLET STRUCTURE



TYPICAL CATCH BASIN

QUANTITY ESTIMATE							
STREET	PAVING	BASE	"X" CURB	"B" CURB	SIDEWALK	"X" GUTTER	BARRELS
MANFIELD DRIVE	29,963.77			2950.5 FT	13,691.4 FT	122.5 FT	
MT. VERNON AVE.	24,274.7 FT		161.9 FT		681.5 FT		1
CORBIN ROAD	61,118.7 FT		2500.4 FT		11,798.7 FT		
TOTALS							

APPROVED BY: *George E. Davidson*
 DATE: 10/17/60
 J. F. DAVIDSON, CIVIL ENGINEER
 3426 TENTH STREET RIVERSIDE, CALIFORNIA
 BENCH MARK: e.s. Spike in RR # 205451N
 SCALE: 1" = 40'
 DATE: 9/12/60
 PLAN & PROFILE
MANFIELD DRIVE
 UNIVERSITY HILLS UNIT 4
 OF 5 SHEETS
 FILE NO.: 2077
 W.D. FOR: R.C.B.-13