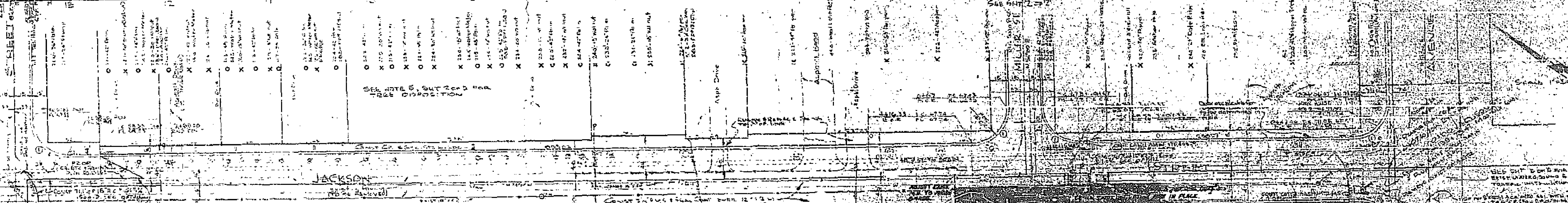


PROFILE

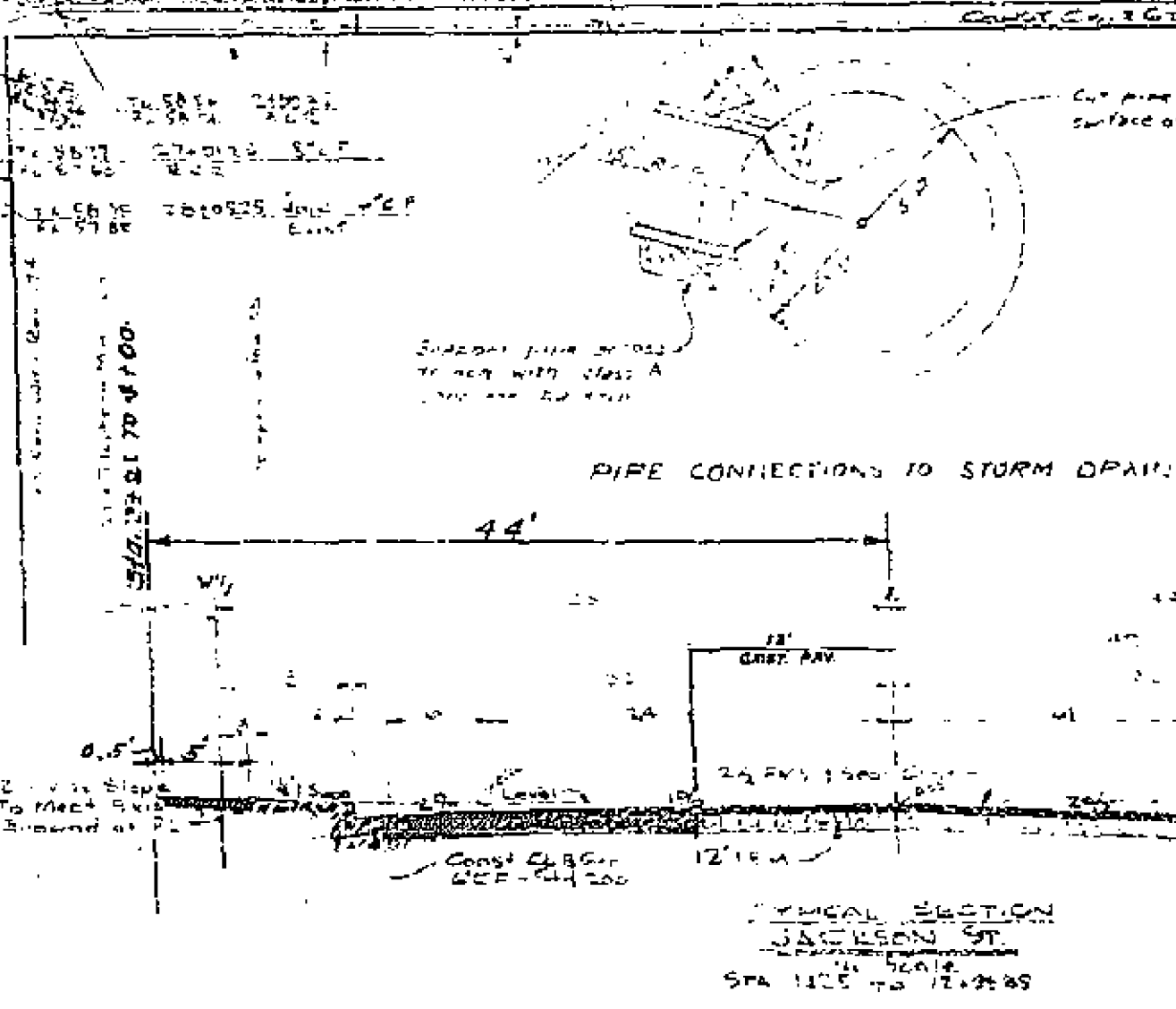
DATE	11/15/55
BY	J. W. [unclear]
CHECKED BY	[unclear]
SCALE	1" = 10'



ORIGINAL DATA

STATION	DATE	BY	REVISION
12	10/11/55	W. J. [unclear]	1
13	10/11/55	W. J. [unclear]	2

NOTE: THIS PLAN FOR CONST FROM STA 2155 TO STA 3195. (ONLY)



QUANTITY ESTIMATE

CLERK AND GUTTER 4" TO 200' L.F.	8677 L.F.
2" PLANT MIX SURFACING 4' WIDE FOOT	102 800 S.F.
IMPORTED BASE MATERIAL	3748 CU YD
3" x 3" ROUNDED CORNER	25 S.F.
CATCH BASIN 18" x 30"	78 L.F.
15" REINFORCED CONCRETE PIPE 1500'	9170 S.F.
MANHOLE	4954 S.F.
ELEVATION	17 L.F.
GUTTER AND GUTTER CHANNEL	17 L.F.
CATCH BASIN REMOVAL	50 S.F.
ADJUST MANHOLES	180 S.F.
18" ROUNDED	180 S.F.
FENCE RELOCATION	180 S.F.
16" REINFORCED CONCRETE PIPE (1000')	22 L.F.
CONCRETE PAVEMENT	1700 S.F.

SEE SHEET 2 OF 2 FOR GENERAL NOTES

REVISIONS		DESCRIPTION
MARK	DATE	
Δ	11-15-55	CONST NOTES FROM SHEET 1 TO SHEET 2 TO STA 3195. USE OF 15" PIPE.
Δ	11-15-55	REVISION TO SHEET 1 TO STA 3195. USE OF 15" PIPE.

DESIGNED BY: [unclear]
 CHECKED BY: [unclear]
 DRAWN BY: [unclear]
 APPROVED BY: [unclear]

478

NOTE: ALL CONSTRUCTION SHALL BE IN ACCORDANCE WITH STANDARD SPECIFICATIONS FOR ROAD AND SEWER WORK OF RIVERSIDE DEPT. OF PUBLIC WORKS.