

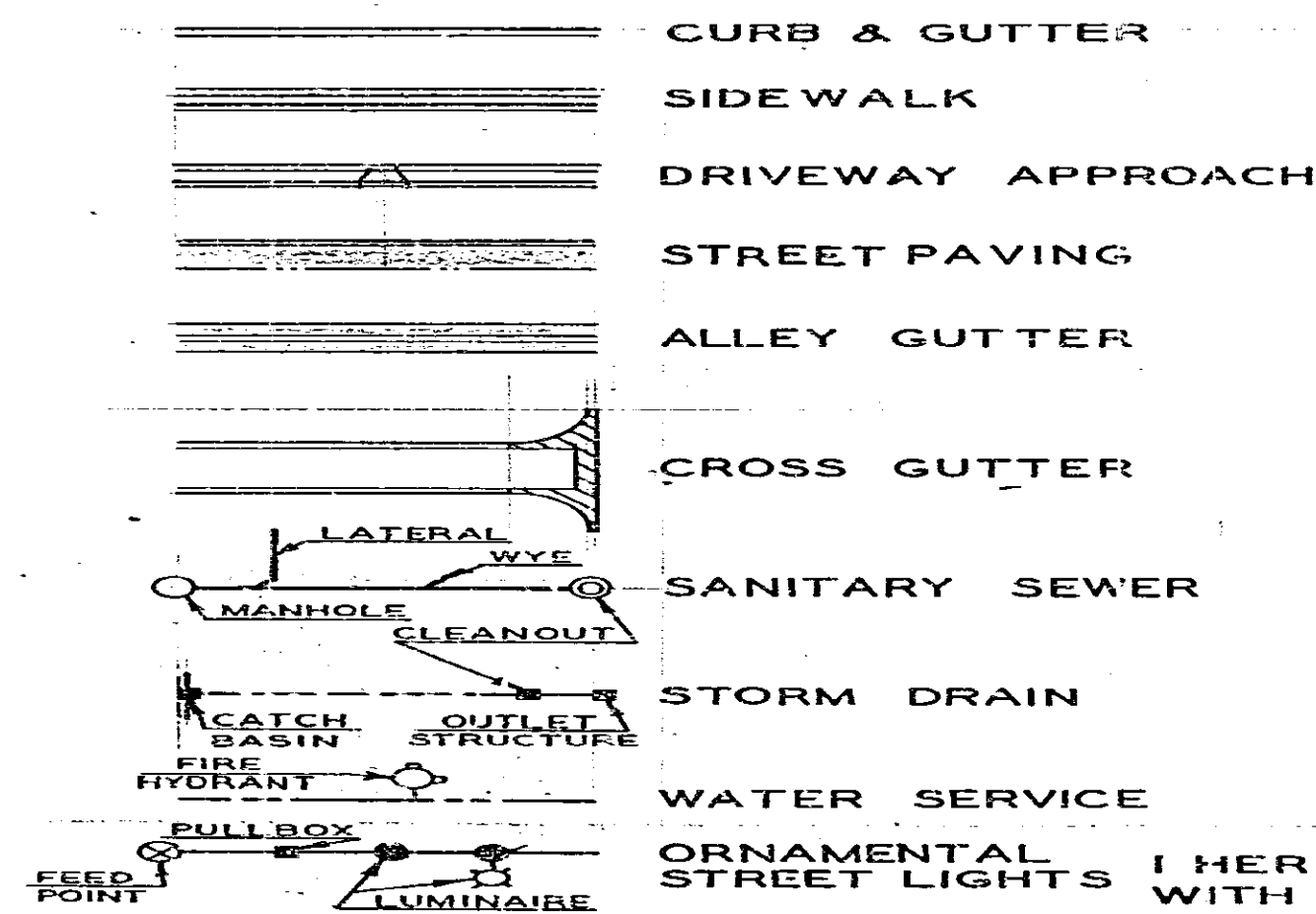
ASSESSMENT NO. 491

DIAGRAM

EXHIBITING WILBUR STREET IMPROVEMENT DISTRICT
IN THE CITY OF RIVERSIDE, CALIFORNIA, AND THE WORK WHICH HAS BEEN DONE
PURSUANT TO THE CONTRACT BETWEEN THE SUPERINTENDENT OF STREETS OF
SAID CITY AND E. L. YEAGER CO. DATED MARCH 25, 1963,
FOR THE CONSTRUCTION OF STREET AND ALLEY IMPROVEMENTS, A SANITARY
SEWER, STORM DRAIN, AND WATER SERVICE.

AS IS MORE PARTICULARLY DESCRIBED IN SAID CONTRACT, TO WHICH REFERENCE
IS HEREBY MADE FOR FURTHER PARTICULARS.
SAID DIAGRAM ALSO SHOWS EACH SEPARATE LOT OR PARCEL OF LAND WITHIN THE
LIMITS OF THE ASSESSMENT DISTRICT, AND THE DIMENSIONS OF EACH SUCH LOT OR
PARCEL OF LAND, AND THE RELATIVE LOCATION OF THE SAME TO THE WORK DONE.
EACH LOT OR PARCEL OF LAND IS NUMBERED IN RED INK TO CORRESPOND TO THE
RED INK NUMBERS IN THE ASSESSMENT.
HEREIN FIGURES NEXT TO PROPERTY LINES SHOW LENGTH OF SAID LINES IN FEET
AND DECIMALS THEREOF.
THE MARK (') MEANS FEET.
PROPERTY LINES THAT DIFFER FROM THE RECORDED SUBDIVISIONS ARE SHOWN BY
BROKEN LINES.
THE DISTRICT BENEFITED IS BOUNDED BY A HEAVY DASHED LINE.
PROPERTY INCLUDED IN THIS ASSESSMENT IS SHOWN ON THE FOLLOWING RECORD-
ED MAPS:
VILLAGE OF ARLINGTON - M.B. 1, PG. 62, S.B. CO. RECORDS.
ARLINGTON ACRES - M.B. 10, PG. 95, RIV. CO. RECORDS.
RECORD OF SURVEY - 30/49, RIV. CO. RECORDS.
RECORD OF SURVEY - 33/24, RIV. CO. RECORDS.
RECORD OF SURVEY - 38/96 & 97, RIV. CO. RECORDS.
SUBDIVISION - TRACT 2315 - M.B. 45, PG. 85, RIV. CO. RECORDS.

HEREIN THE DIFFERENT KINDS OF WORK
PERFORMED ARE SHOWN AS FOLLOWS:



HERE FOLLOWS A STATEMENT OF AMOUNTS OF
DIFFERENT KINDS OF WORK DONE PURSUANT TO
THE HERE-IN-BEFORE IDENTIFIED CONTRACT
AND TO RESOLUTION OF INTENTION NO. 9576,
ADOPTED BY THE CITY COUNCIL OF THE CITY
OF RIVERSIDE, CALIFORNIA ON THE 11TH DAY
OF DECEMBER, 1962.

105	L.S.	CLEARING AND GRUBBING.
118	L.S.	REMOVE EXISTING CURB AND GUTTER.
118	L.S.	RELOCATE PALM TREES.
118	L.S.	EARTHWORK.
118	L.S.	CURB AND GUTTER - STD. DWG. NO. 200.
118	L.S.	2" x 4" REDWOOD HEADERS.
118	L.S.	CONCRETE ALLEY GUTTER - STD. DWG. NO. 110.
118	L.S.	5" IMPORTED BASE MATERIAL.
118	L.S.	ASPHALTIC CONCRETE.
118	L.S.	FOG SEAL COAT.
118	L.S.	SIDEWALK - STD. DWG. NO. 350.
118	L.S.	DRIVEWAY APPROACH - STD. DWG. NO. 302.
118	L.S.	14" DOUBLE WALL CONCRETE IRRIGATION PIPE-2000-D.
118	L.S.	STREET SIGNS.
1945	L.S.	TRAFFIC SIGNS.
990	L.S.	9" VITRIFIED CLAY PIPE.
990	L.S.	4" VITRIFIED CLAY PIPE.
990	L.S.	MANHOLE - STD. DWG. NO. 300.
990	L.S.	CLEANOUT - STD. DWG. NO. 360.
359	L.S.	8" x 4" WYES.
359	L.S.	FULL ASPHALT LINED SMOOTH BORE 11" x 16".
1	L.S.	16 GA. C.M.P.A.
1	L.S.	CATCH BASIN - 4' OPENING, STD. DWG. NO. 405.
1	L.S.	OUTLET STRUCTURE - MODIFIED, STD. DWG. NO. 410.
1	L.S.	CLEANOUT BOX - STD. DWG. NO. 425.
1	L.S.	WATER SERVICE - COMPLETE.
1	L.S.	ORNAMENTAL STREET LIGHTS.
1	L.S.	ORNAMENTAL STREET TREES.

I HEREBY CERTIFY THAT THE ABOVE WORK WAS DONE IN ACCORDANCE
WITH LINES AND GRADES FURNISHED OR APPROVED BY ME, AND THAT
THE DIAGRAM OF THE ASSESSMENT DISTRICT AND THE QUANTITIES
OF WORK SHOWN HEREON ARE CORRECT.

E. L. Yeager
CITY ENGINEER OF THE
CITY OF RIVERSIDE, CALIFORNIA

DIAGRAM RECEIVED:

THIS DAY OF 19

SUPERINTENDENT OF STREETS OF THE
CITY OF RIVERSIDE, CALIFORNIA

RECORDED:

AT O'CLOCK, .M.,
THIS DAY OF 19

SUPERINTENDENT OF STREETS OF THE
CITY OF RIVERSIDE, CALIFORNIA

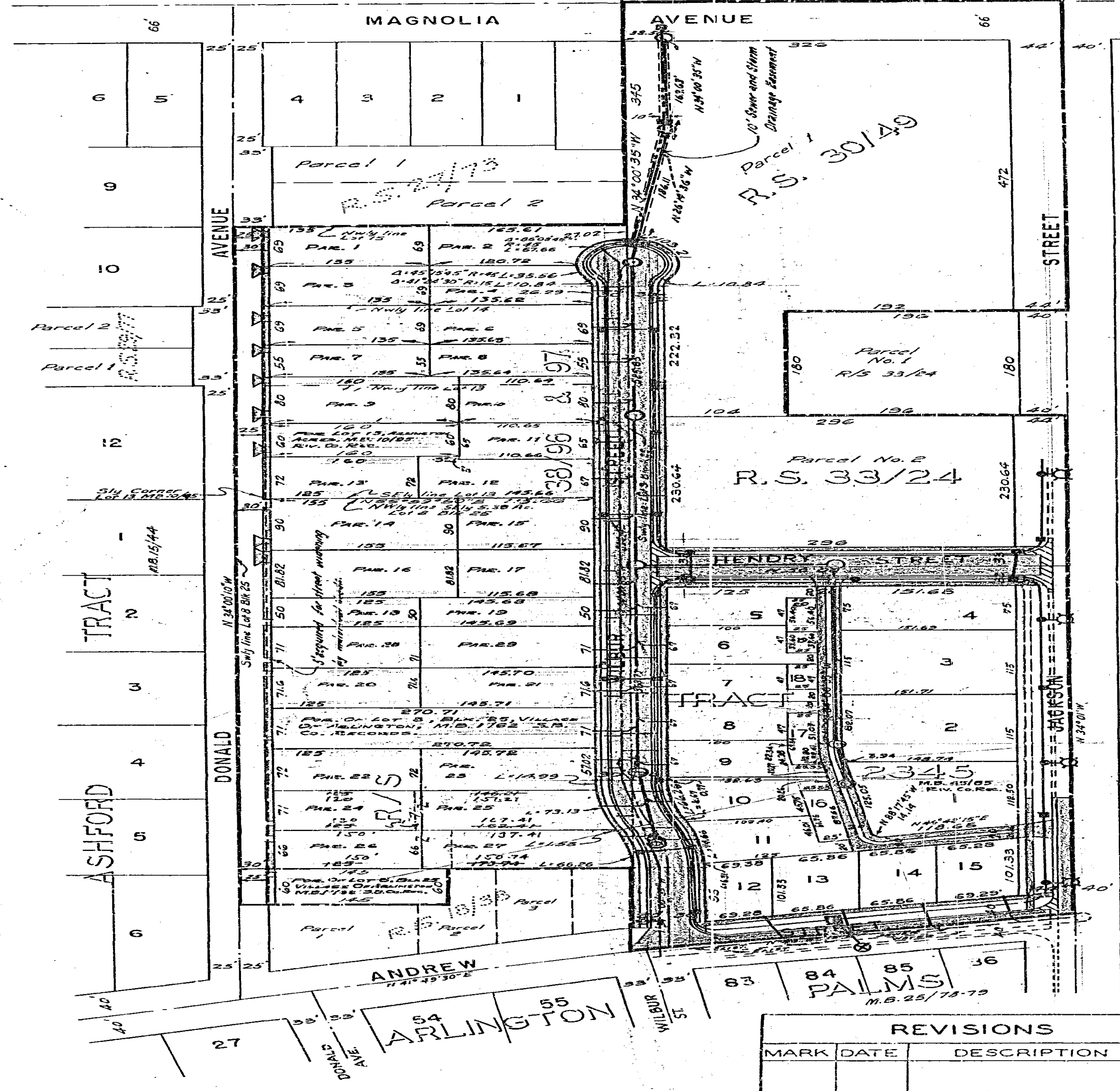
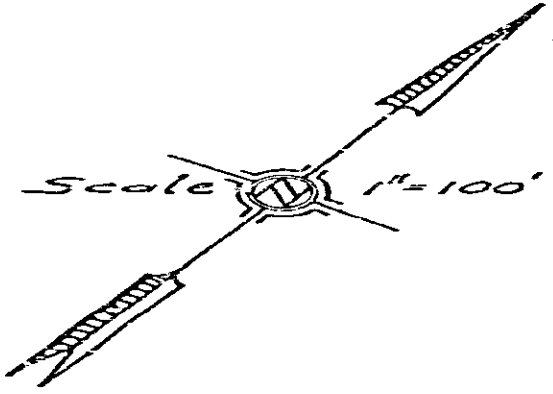


DIAGRAM
OF THE PROPERTY AFFECTED OR BENEFITED
BY THE WORK IN THE
WILBUR STREET IMPROVEMENT DISTRICT

REVISIONS		CITY OF RIVERSIDE CALIFORNIA DEPARTMENT OF PUBLIC WORKS	
MARK	DATE	DESCRIPTION	
DESIGNED BY	h.l.m.	CHECKED BY	W. J. ...
DRAWN BY	h.l.m.	APPROVED BY	[Signature]
RECOMMENDED BY	William D. ...	DIRECTOR OF PUBLIC WORKS	R-484B
FOR ASSISTANT CITY ENGINEER		DATE	7-24-63
			SHEET 2 OF 2

