

ASSESSMENT NO. 483

DIAGRAM

EXHIBITING HAWTHORNE AVENUE IMPROVEMENT DISTRICT IN THE CITY OF RIVERSIDE, CALIFORNIA, AND THE WORK WHICH HAS BEEN DONE PURSUANT TO THE CONTRACT BETWEEN THE SUPERINTENDENT OF STREETS OF SAID CITY AND CALIFORNIA ASPHALT COMPANY DATED APRIL 26, 1962, FOR THE CONSTRUCTION OF STREET IMPROVEMENTS IN PORTIONS OF HAWTHORNE AVENUE AND GARFIELD STREET AND A DOMESTIC WATER MAIN OF HAWTHORNE AVENUE.

AS IS MORE PARTICULARLY DESCRIBED IN SAID CONTRACT, TO WHICH REFERENCE IS HEREBY MADE FOR FURTHER PARTICULARS. SAID DIAGRAM ALSO SHOWS EACH SEPARATE LOT OR PARCEL OF LAND WITHIN THE LIMITS OF THE ASSESSMENT DISTRICT, AND THE DIMENSIONS OF EACH SUCH LOT OR PARCEL OF LAND, AND THE RELATIVE LOCATION OF THE SAME TO THE WORK DONE. EACH LOT OR PARCEL OF LAND IS NUMBERED IN RED INK TO CORRESPOND TO THE RED INK NUMBERS IN THE ASSESSMENT. HEREIN FIGURES NEXT TO PROPERTY LINES SHOW LENGTH OF SAID LINES IN FEET AND DECIMALS THEREOF. THE MARK (') MEANS FEET. PROPERTY LINES THAT DIFFER FROM THE RECORDED SUBDIVISIONS ARE SHOWN BY BROKEN LINES. THE DISTRICT BENEFITED IS BOUNDED BY A HEAVY DASHED LINE. PROPERTY INCLUDED IN THIS ASSESSMENT IS SHOWN ON THE FOLLOWING RECORDED MAPS:

VILLAGE OF ARLINGTON, M.B. 1, PG. 62, SAN BERNADINO COUNTY RECORDS.
RECORD OF SURVEY - BK. 20, PG 17, RIVERSIDE COUNTY RECORDS

HEREIN THE DIFFERENT KINDS OF WORK PERFORMED ARE SHOWN AS FOLLOWS:

CURB AND CUTTER	
SIDEWALK	
DRIVEWAY APPROACH	
STREET PAVING	
WATER SERVICE	
STREET LIGHT	

HERE FOLLOWS A STATEMENT OF AMOUNTS OF DIFFERENT KINDS OF WORK DONE PURSUANT TO THE HERE-IN-BEFORE IDENTIFIED CONTRACT AND TO RESOLUTION OF INTENTION NO. 9329, ADOPTED BY THE CITY COUNCIL OF THE CITY OF RIVERSIDE, CALIFORNIA ON THE 23 RD DAY OF JANUARY, 1962. AS MODIFIED BY RESOLUTION No 9373 ADOPTED BY THE CITY COUNCIL OF THE CITY OF RIVERSIDE, CALIFORNIA ON THE 6 TH DAY OF MARCH, 1962.

20	L.F. CURB REMOVAL
---	L.S. TREE REMOVAL
690	L.F. CURB AND CUTTER
454	S.F. CROSS CUTTER
6,110	S.F. SIDEWALK
1,270	S.F. DRIVEWAY APPROACHES
16	L.F. REDWOOD HEADERS
344	C.Y. IMPORTED BASE MATERIAL
11,130	S.F. ASPHALTIC CONCRETE PAVING
1	EA. BARRICADE
---	L.S. WATER SERVICE - COMPLETE
---	L.S. ORNAMENTAL STREET LIGHTS
---	L.S. ORNAMENTAL STREET TREES

I HEREBY CERTIFY THAT THE ABOVE WORK WAS DONE IN ACCORDANCE WITH LINES AND GRADES FURNISHED OR APPROVED BY ME, AND THAT THE DIAGRAM OF THE ASSESSMENT DISTRICT AND THE QUANTITIES OF WORK SHOWN HEREON ARE CORRECT.

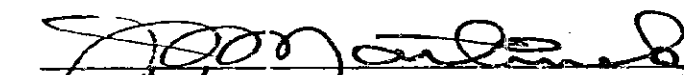

CITY ENGINEER OF THE
CITY OF RIVERSIDE, CALIFORNIA

DIAGRAM RECEIVED:
THIS DAY OF , 19 .

SUPERINTENDENT OF STREETS OF THE
CITY OF RIVERSIDE, CALIFORNIA

RECORDED:
AT O'CLOCK, .M.,
THIS DAY OF , 19 .

SUPERINTENDENT OF STREETS OF THE
CITY OF RIVERSIDE, CALIFORNIA

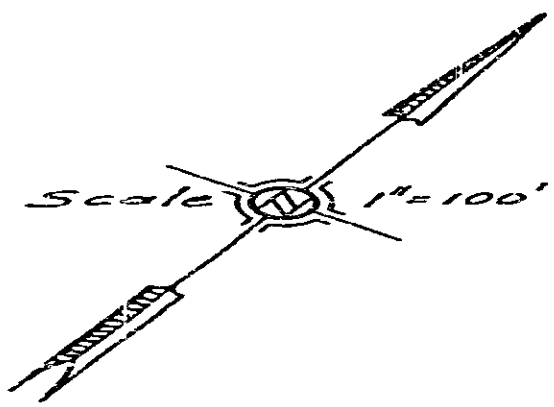
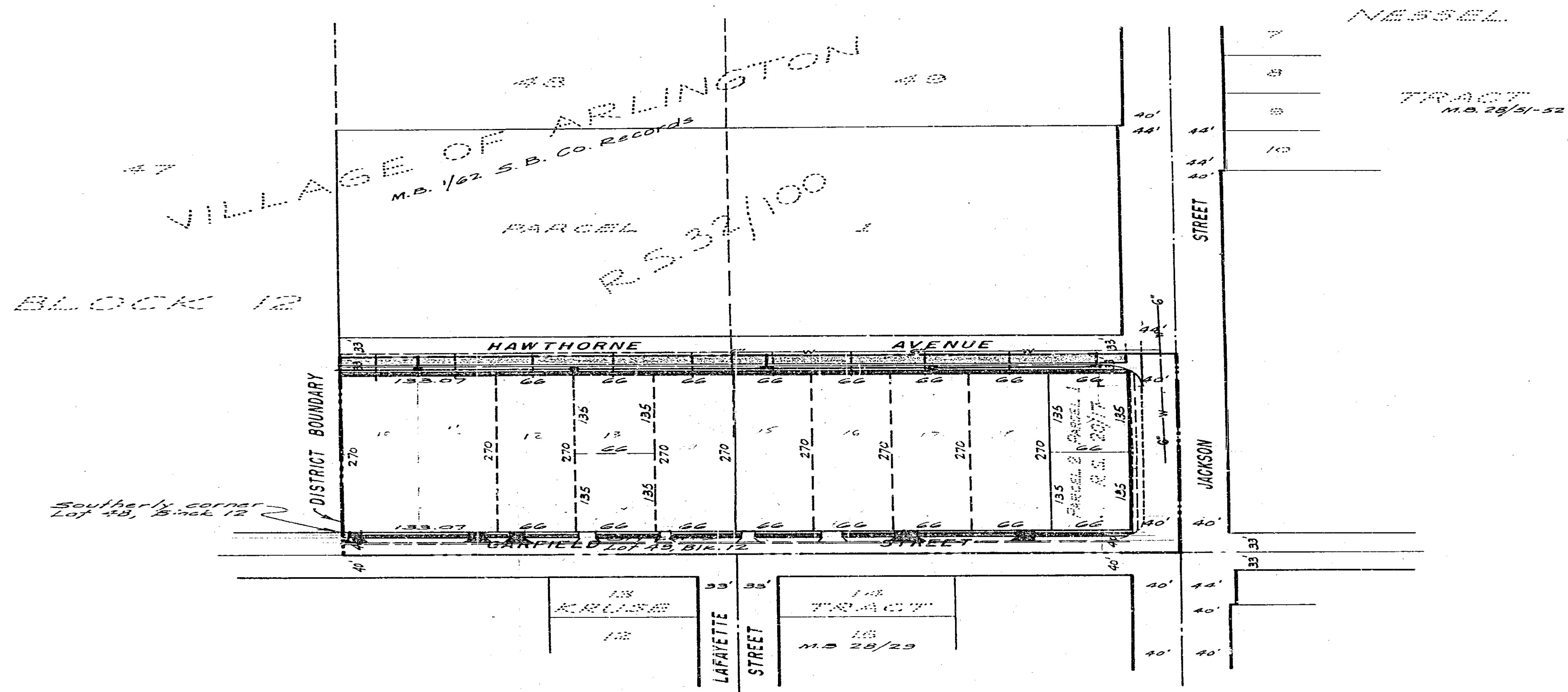


DIAGRAM
OF THE PROPERTY AFFECTED OR BENEFITED
BY THE WORK IN THE
HAWTHORNE AVENUE
IMPROVEMENT DISTRICT

REVISIONS			CITY OF RIVERSIDE CALIFORNIA DEPARTMENT OF PUBLIC WORKS	
MARK	DATE	DESCRIPTION		
			HAWTHORNE AVENUE IMPROVEMENT DISTRICT	
DESIGNED BY	H.L.M.	CHECKED BY	APPROVED BY	R-485B SHEET 2 OF 2
DRAWN BY	H.L.M.	<i>[Signature]</i>	<i>[Signature]</i> DIRECTOR OF PUBLIC WORKS	
RECOMMENDED BY	H.L.M.	<i>[Signature]</i> ASS. STANT CITY ENGINEER	DATE <i>8-17-62</i>	

