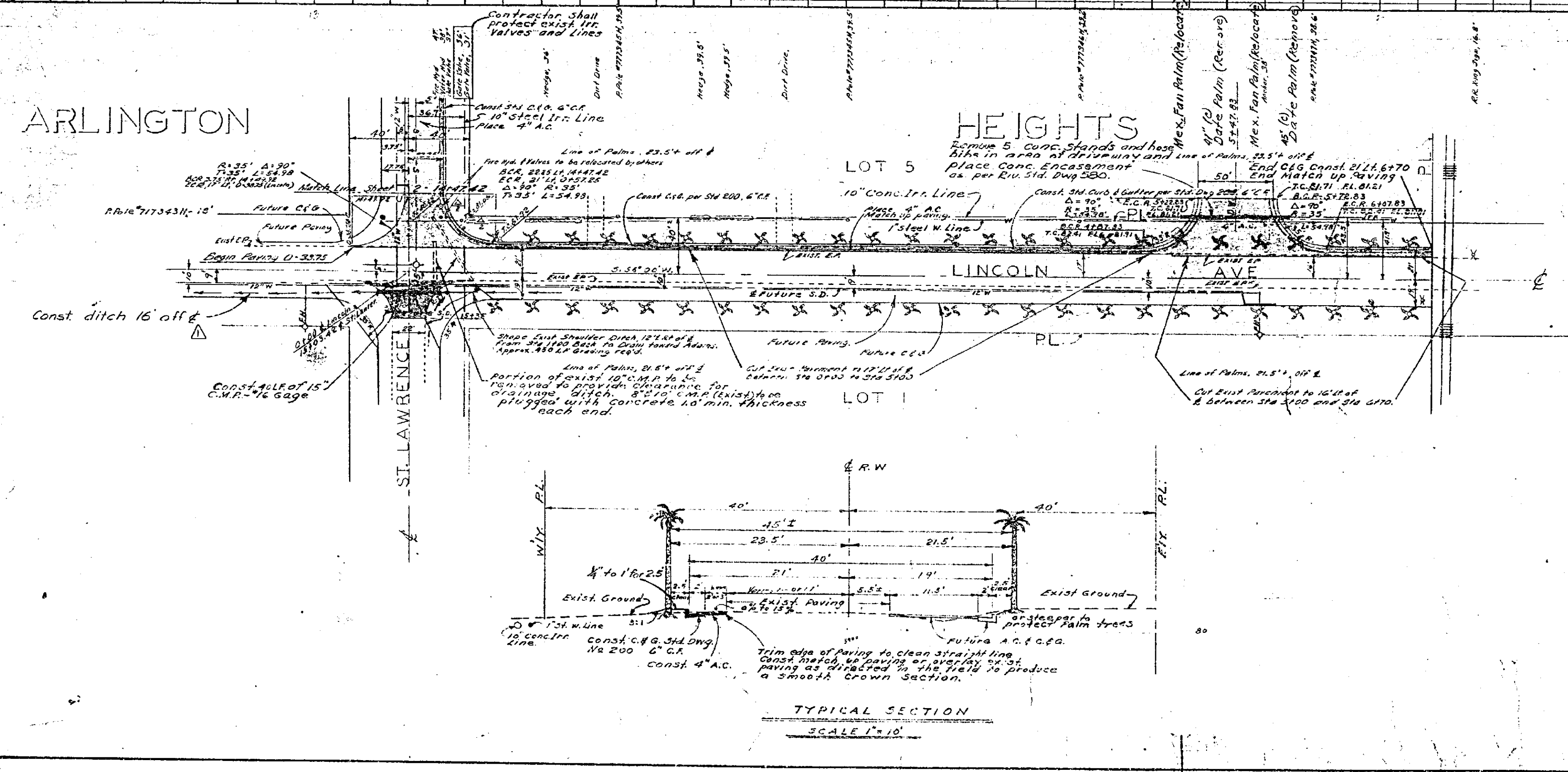


D.M. SPIKE IN R.P. 7173434
 N.W. CORNER ST. LAWRENCE
 AND LINCOLN AVE. EL. 882.975
 R.B. 1/57-68
 SCALES: HOR. 1"=50'
 VERT. 1"=5'

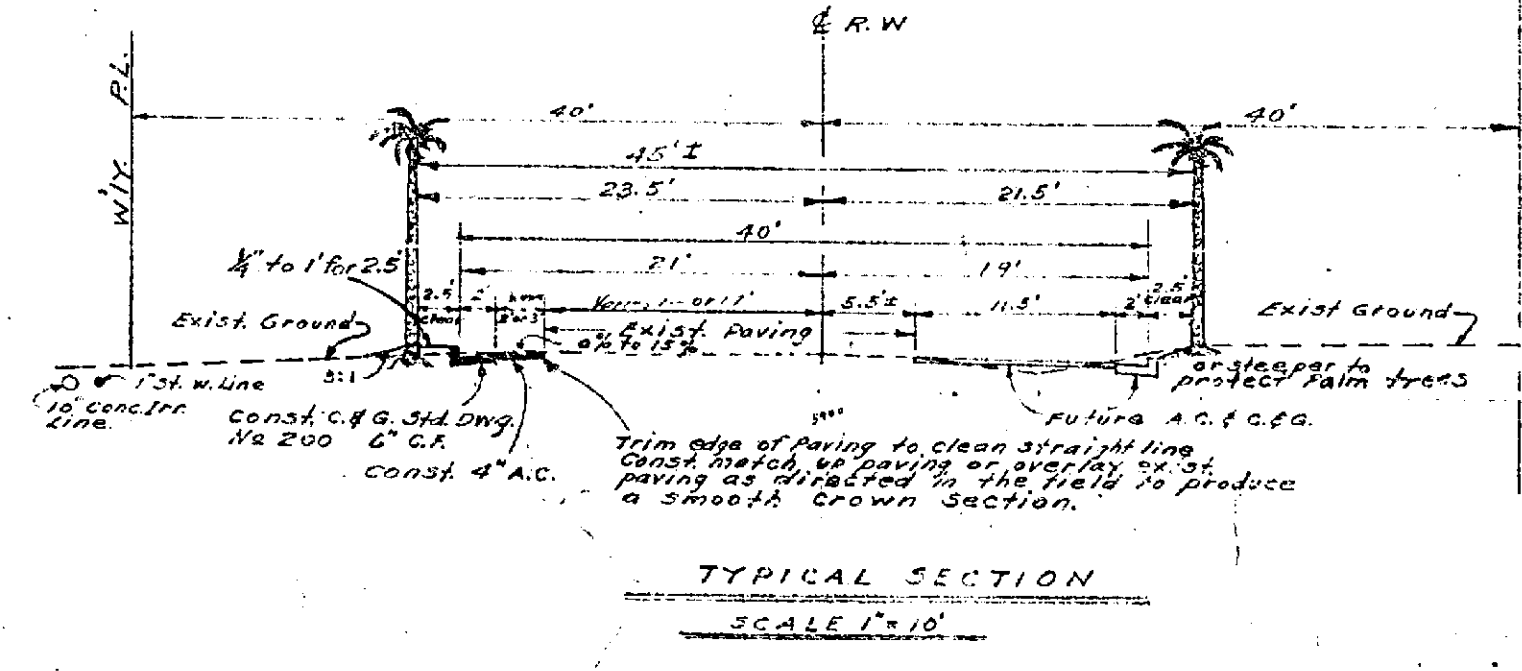
ARLINGTON

HEIGHTS



Estimated Pay Quantities

Palm Tree Removal (C)	7 Ea
Palm Tree Relocation	7 Ea
Roadway Excavation	169 C.Y.
Removal of Asphalt Paving	16 S.Y.
Curb and Gutter, 6" C.F.	1,756 L.F.
Cross Gutter and Apron	1,440 S.F.
Driveway Approach	660 S.F.
Aggregate Base Material	500 C.Y.
Asphalt Concrete	817 Ton
Adjust Manhole to Grade	3 Ea
Con Encasement of Irr. Line	70 L.F.
15" C.M.P. Culvert (16 gage)	40 L.F.



COMPOSITE STREET WIDENING
 CITY OF RIVERSIDE CALIFORNIA
 DEPARTMENT OF PUBLIC WORKS

LINCOLN AVENUE
 BETWEEN
 ST LAWRENCE
 AND ATSF SPUR

R-486

CONTRACT PW-1 SHEET 1 OF 15

REVISIONS	
MARK	DESCRIPTION
Δ	7-11-62 Contract PW-1 set # wds 9-1-57

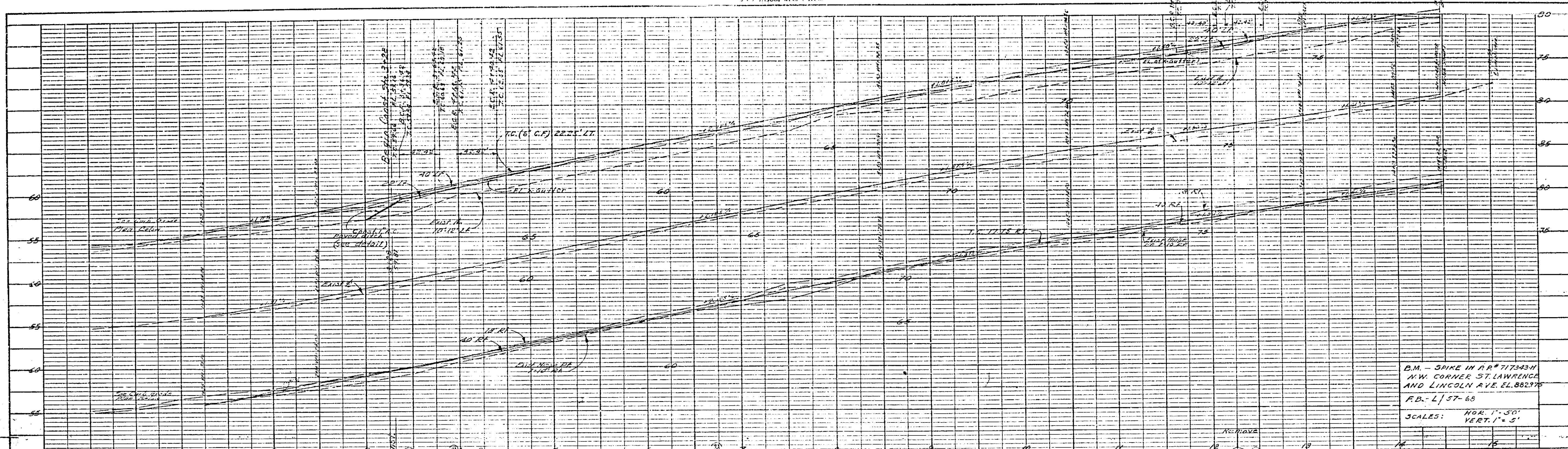
APPROVED BY: [Signature]
 DATE: 5/11/62
 TRAFFIC ENGINEER

DESIGNED BY: JEM
 DRAWN BY: H.R.C.
 RECOMMENDED BY: [Signature]
 ASSISTANT CITY ENGINEER

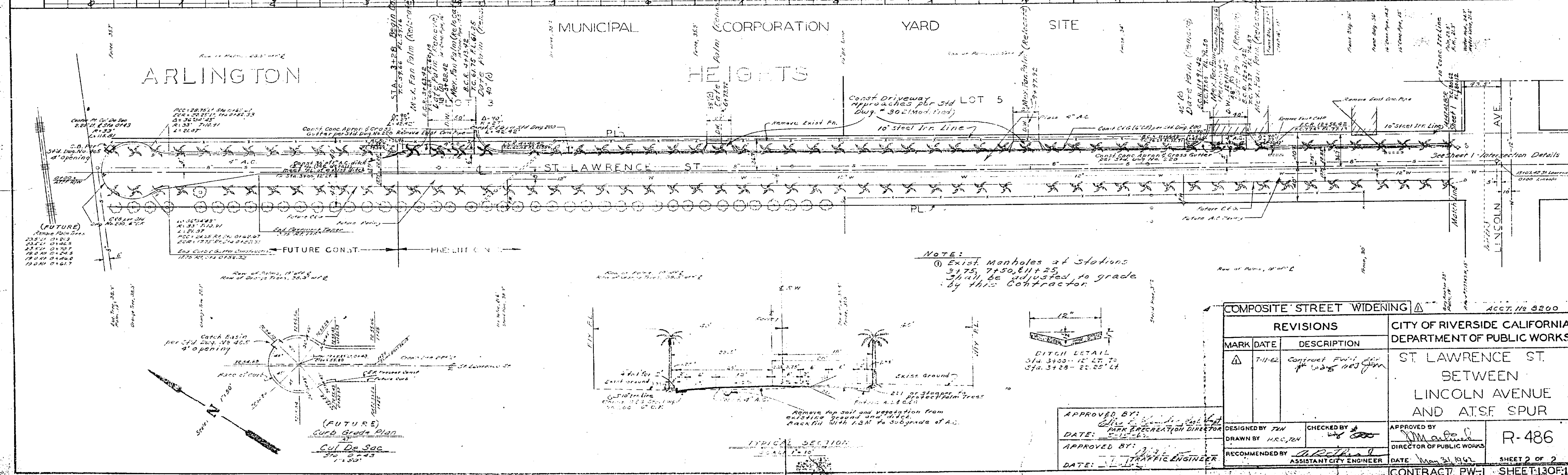
CHECKED BY: [Signature]
 DATE: May 31, 1962

APPROVED BY: [Signature]
 DIRECTOR OF PUBLIC WORKS

DATE: May 31, 1962



NO.	DATE	REVISIONS
1		AS SHOWN



NO.	DATE	REVISIONS
1		AS SHOWN

COMPOSITE STREET WIDENING			CITY OF RIVERSIDE CALIFORNIA DEPARTMENT OF PUBLIC WORKS	
MARK	DATE	DESCRIPTION	ST. LAWRENCE ST. BETWEEN LINCOLN AVENUE AND A.T.S.F. SPUR	
Δ	7-11-62	Contract PW-1, per 1-25-62	R-486	
DESIGNED BY: J.M. [Signature]			CHECKED BY: [Signature]	APPROVED BY: [Signature]
DRAWN BY: H.R.C./J.H.			DIRECTOR OF PUBLIC WORKS	
APPROVED BY: [Signature]			RECOMMENDED BY: [Signature]	
DATE: 5-15-62			ASSISTANT CITY ENGINEER	
APPROVED BY: [Signature]			DATE: 7-11-62	
DATE: 7-11-62			TRAFFIC ENGINEER	
			SHEET 2 OF 2	
			CONTRACT PW-1 SHEET 13 OF 15	