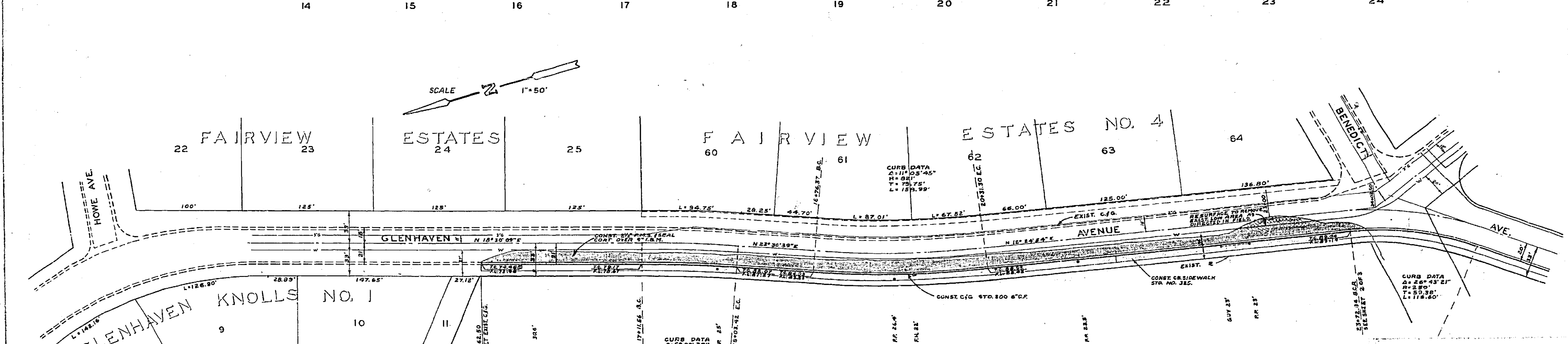
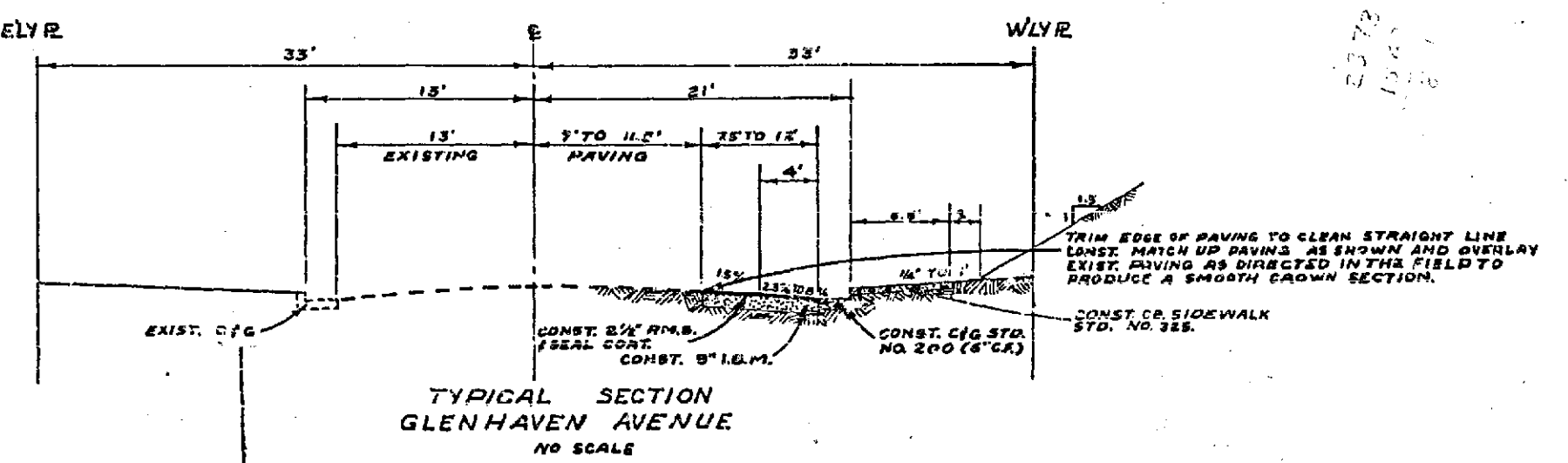


PROFILE	DATE	BY



PLAN	DATE	BY



REVISIONS		CITY OF RIVERSIDE CALIFORNIA DEPARTMENT OF PUBLIC WORKS
MARK	DATE	
		GLENHAVEN AVENUE HOWE AVE. TO BENEDICT AVE.
DESIGNED BY	CHECKED BY	APPROVED BY
DRAWN BY B. LOW	<i>[Signature]</i>	<i>[Signature]</i>
RECOMMENDED BY	ASSISTANT CITY ENGINEER	DIRECTOR OF PUBLIC WORKS
		DATE <i>April 17, 1966</i>

R-490
SHEET 1 OF 1