

Revision Approved _____ 1960
 A. G. KEITH
 Riverside County Road Commissioner
 By _____ Deputy

Approved Aug 23 _____ 1960
 A. G. KEITH
 Riverside County Road Commissioner
 By _____ Deputy

QUANTITY ESTIMATE

14" 21" Reflector	3
2 1/4" Redwood Header	440 lin. ft.
2 1/2" P.M.S. by County	12,060 sq. ft.
2 1/2" P.M.S. by Subdivider	100,200 sq. ft.
Type "A" Curb & Gutter	5,646 lin. ft.
Type "B" Curb & Gutter	640 lin. ft.
Cross Gutter Std. No. 14	525 sq. ft.
Imported Base Material (4")	1,345 cu. yd.
Catch Basin Std. No. 21	5
Manhole Std. No. 36	4
Double Face Street Sign Std. No. 28	1
Manhole Std. No. 35	1
18" Reinforced concrete pipe	127 lin. ft.
18" Concrete pipe	485 lin. ft.
Concrete headwall	1
Barricade Std. No. 27	3
Excavation	21,100 cu. yds.

REVISIONS	DATE	BY

TRACT NO. 2121

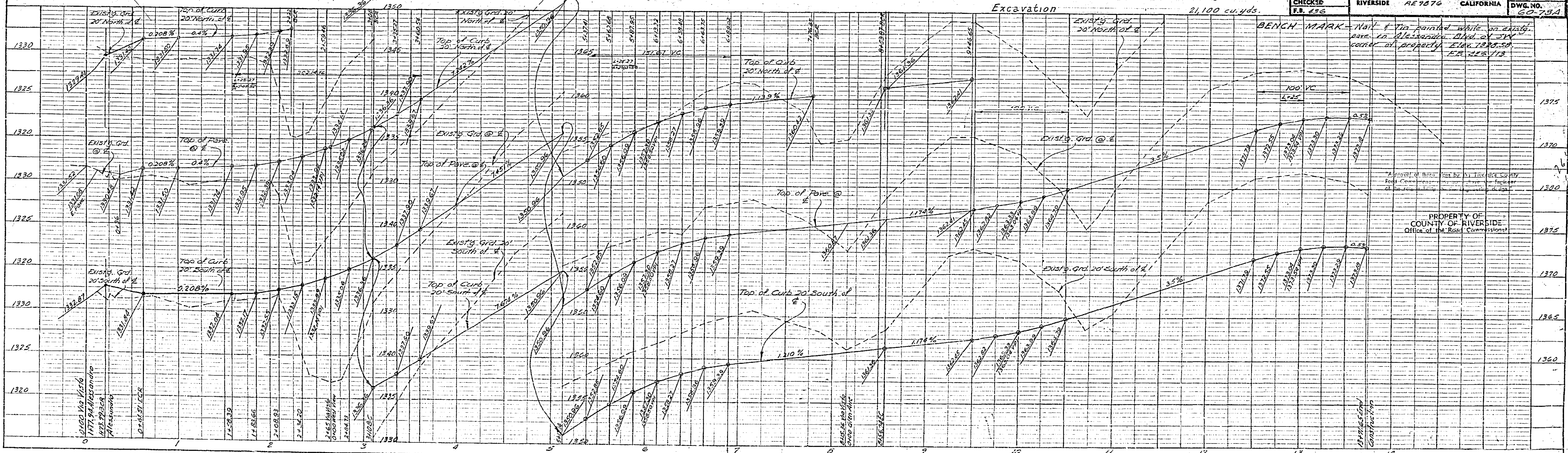
STREET PLAN & PROFILE

VIA VISTA DRIVE

SCALE 1"=50'
 DATE 7-60
 DRAWN SEC
 TRACED RWL
 CHECKED
 P.R. 496

ALBERT A. WEBB ASSOCIATES
 CIVIL ENGINEERS
 RIVERSIDE CALIFORNIA

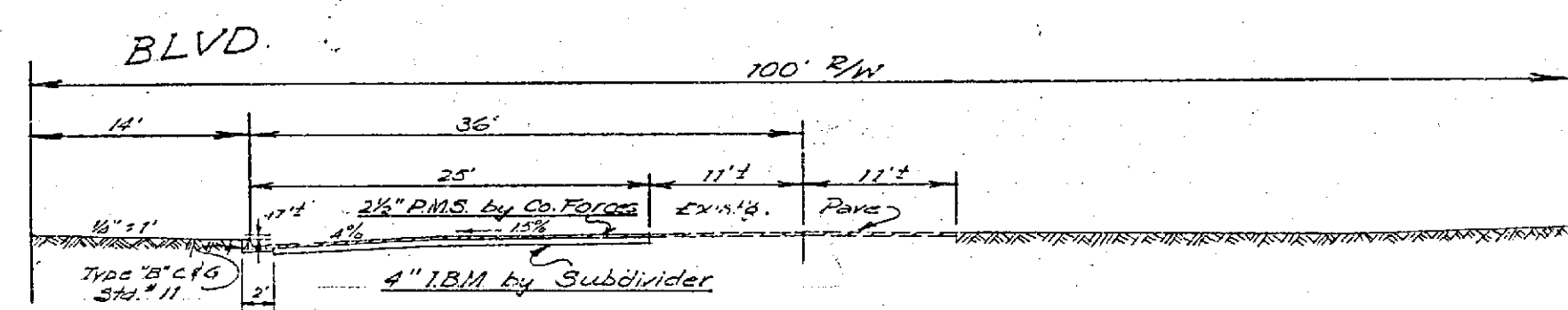
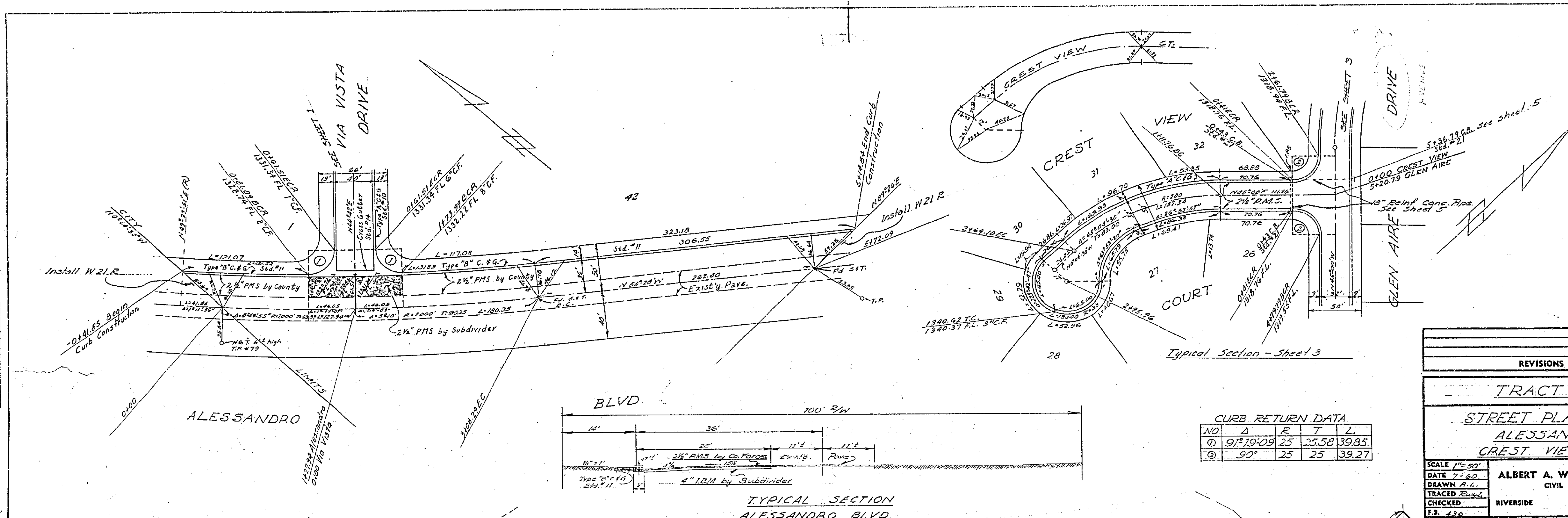
W.D. GOTT
 SHEET
 OF SHEETS
 DWG. NO. 60-784



R-497 740-Y
 Dwg. No. 60-784

PLAN	REVISIONS	DATE	BY
NO.			
1			
2			
3			
4			
5			
6			
7			
8			
9			
10			

PROFILE	REVISIONS	DATE	BY
NO.			
1			
2			
3			
4			
5			
6			
7			
8			
9			
10			



NO	A	R	T	L
1	9°19'09"	25	25.58	39.85
2	90°	25	25	39.27

REVISIONS		DATE	BY
TRACT NO. 2121			
STREET PLAN & PROFILE			
ALESSANDRO BLVD.			
CREST VIEW COURT			
SCALE 1"=50'	DATE 7-60	W.O. 60-78	SHEET
DRAWN A.L.	TRACED E.W.	CHECKED E.W.	F.S. 436
ALBERT A. WEBB ASSOCIATES		CIVIL ENGINEERS	
RIVERSIDE		CALIFORNIA	
		DWG. NO. 60-78A	

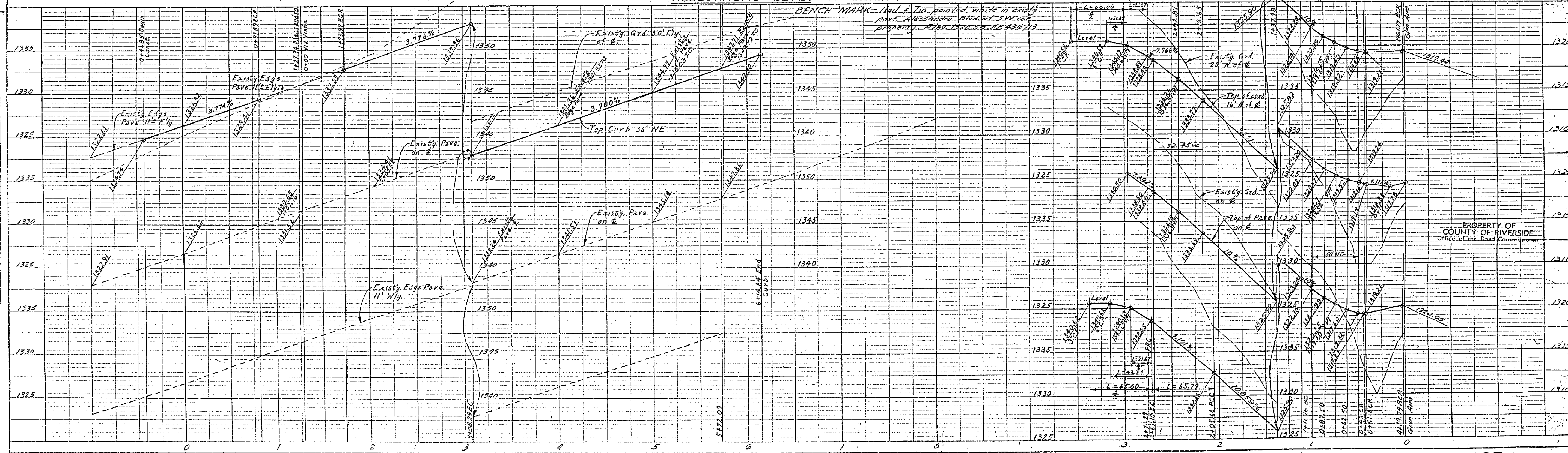
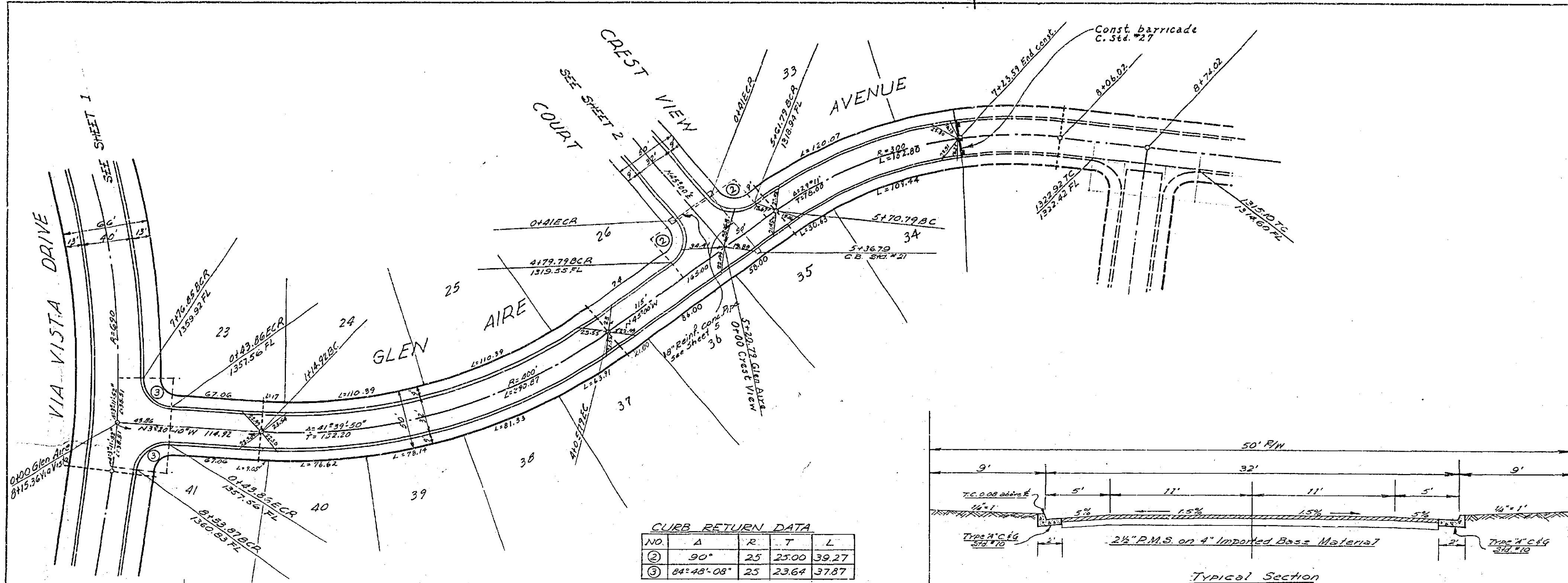


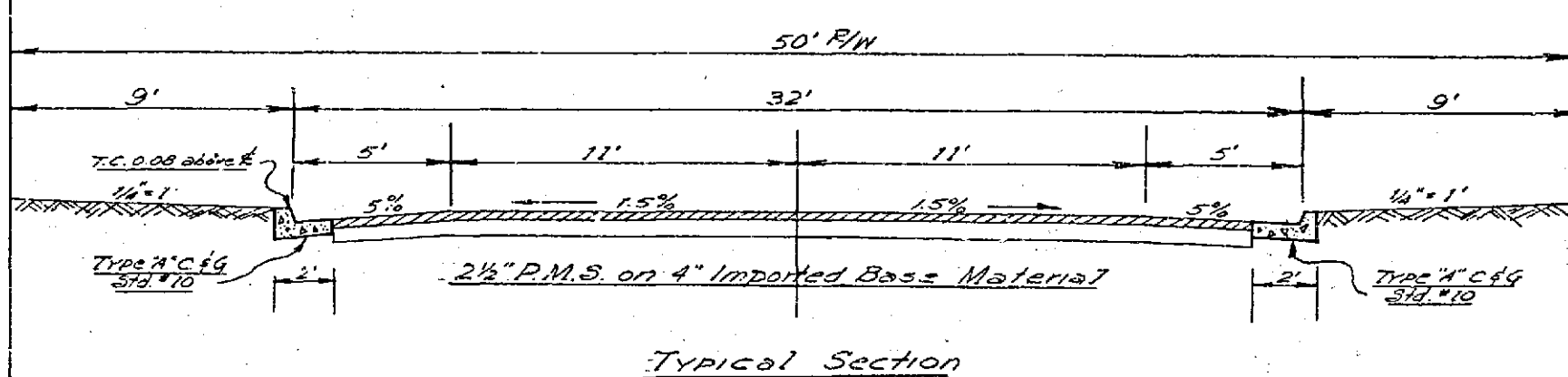
PLATE 1 - PLAN - PROFILE, CIVIL ENGINEERS ASSOCIATES, RIVERSIDE, CALIF.

R-497 740-Y
Dwg. No. 60-78A



CURB RETURN DATA

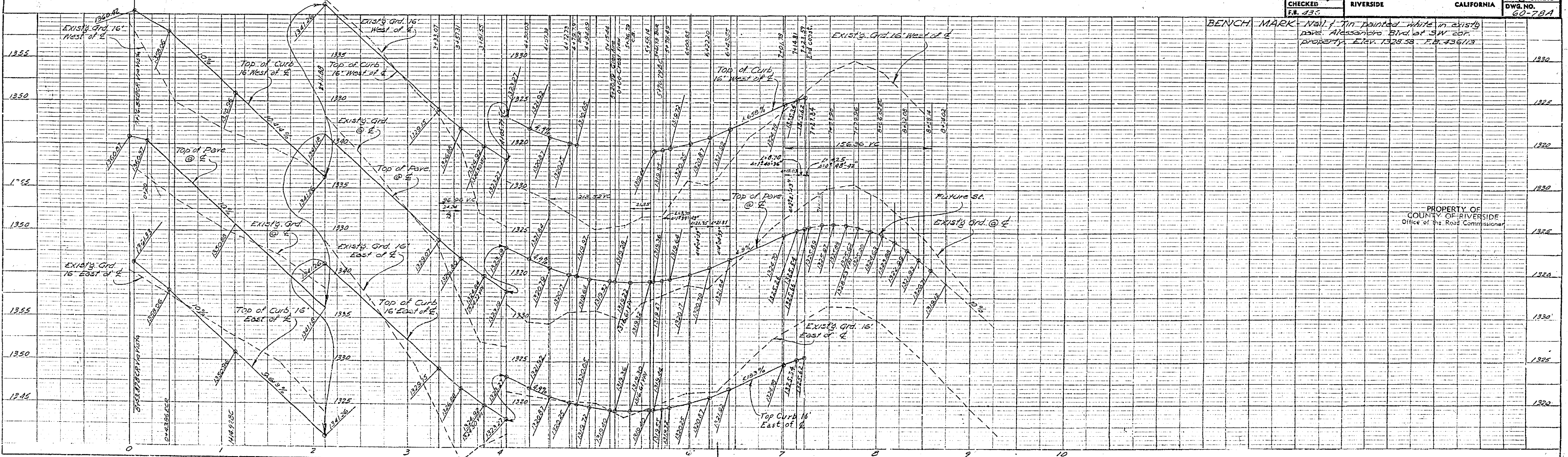
NO.	A	R	T	L
①	90°	25	25.00	39.27
②	84°48'08"	25	23.64	37.87



Typical Section
Glen Aire Avenue &
Crest View Court

GENERAL NOTES
 PAVEMENT WIDENING TO MEET CURB TO BE DONE BY COUNTY FORCES. SUBDIVIDER WILL GRADE, PLACE BASE MATERIAL, AND LEAVE IN A CONDITION SAFE FOR TRAFFIC.
 ANY RELOCATION OF EXISTING UTILITIES TO CLEAR THE PROPOSED WORK SHALL BE THE RESPONSIBILITY OF THE SUBDIVIDER.
 SUBDIVIDER WILL INSTALL STREET NAME SIGNS CONFORMING TO COUNTY STANDARD NO. 28 AS DIRECTED.
 ALL WORK SHALL CONFORM TO THE REQUIREMENTS OF THE RIVERSIDE COUNTY ROAD DEPARTMENT SPECIFICATIONS FOR THE IMPROVEMENT OF SUBDIVISION STREETS, CO. ORD. 461 DATED 1953.
 IT SHALL BE THE RESPONSIBILITY OF THE CONTRACTOR TO NOTIFY THE ENGINEER AFTER THE BASE COURSE FOR THE STREET HAS BEEN CONSTRUCTED AND BEFORE THE A.C. PAVING HAS BEEN INSTALLED SO THAT THE ENGINEER MAY INSTALL THE STREET CENTERLINE MONUMENT REQUIRED BY RIV. CO. ORD. NO. 460 STANDARD NO. 42
 DEPTH OF IMPORTED BASE MATERIAL WILL BE DETERMINED BY SOIL TESTS AFTER ROUGH GRADING, WITH A MINIMUM DEPTH OF 4".

REVISIONS	DATE	BY
TRACT NO. 2121		
STREET PLAN & PROFILE		
GLEN AIRE AVENUE		
SCALE 1/8"=1'-0"	DATE 7-60	W.D. 60-78
DRAWN REC	ALBERT A. WEBB ASSOCIATES	CIVIL ENGINEERS
CHECKED ENG	RIVERSIDE	CALIFORNIA
F.B. 435		OF 5 SHEETS
		DWG. NO. 60-78A

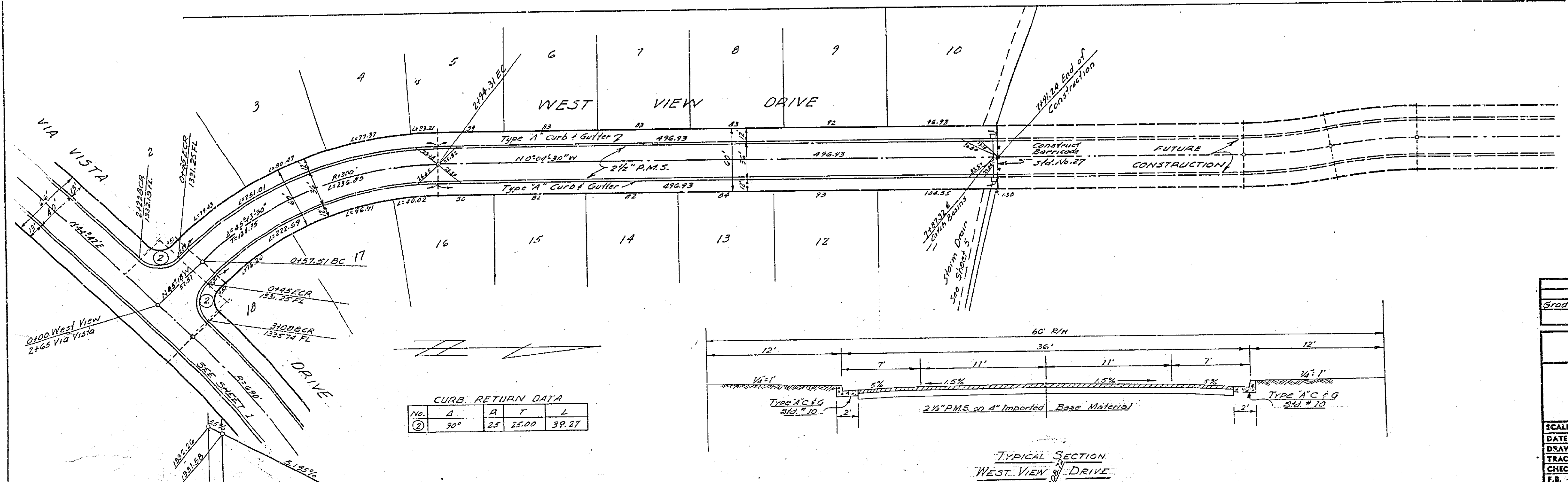


BENCH MARK: Nail of Tin painted white in existing pipe Alessandro Blvd. at SW cor. Property Elev. 1328.38 F.B. 436/13

PROPERTY OF
COUNTY OF RIVERSIDE
Office of the Road Commissioner

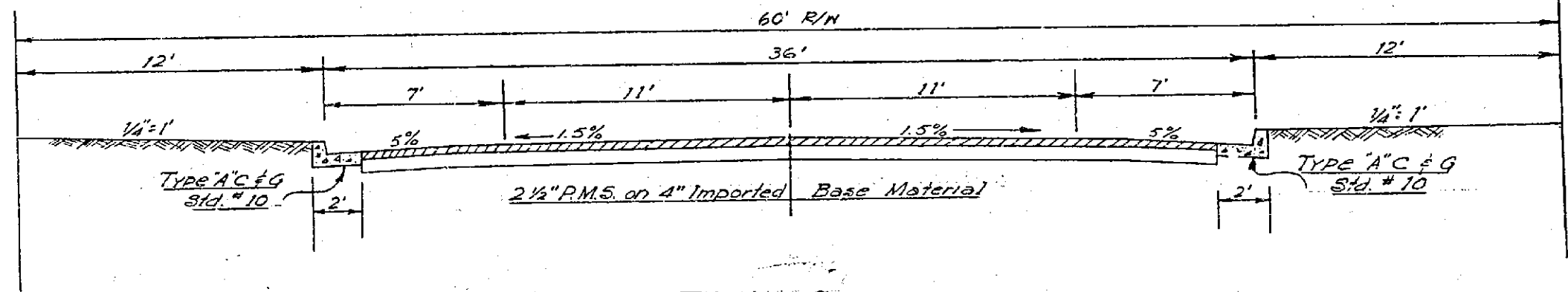
PLAN	STARTED	DATE
	NOTED	DATE
	REVISIONS	DATE
	BY	
	DATE	

PROFILE	STARTED	DATE
	NOTED	DATE
	REVISIONS	DATE
	BY	
	DATE	



CURB RETURN DATA

No.	A	R	T	L
1	30°	25'	25:00	39.21'



Grade change bet. sta. 0+20 to 2+90.312.C. 10-17-60 A.L.M.

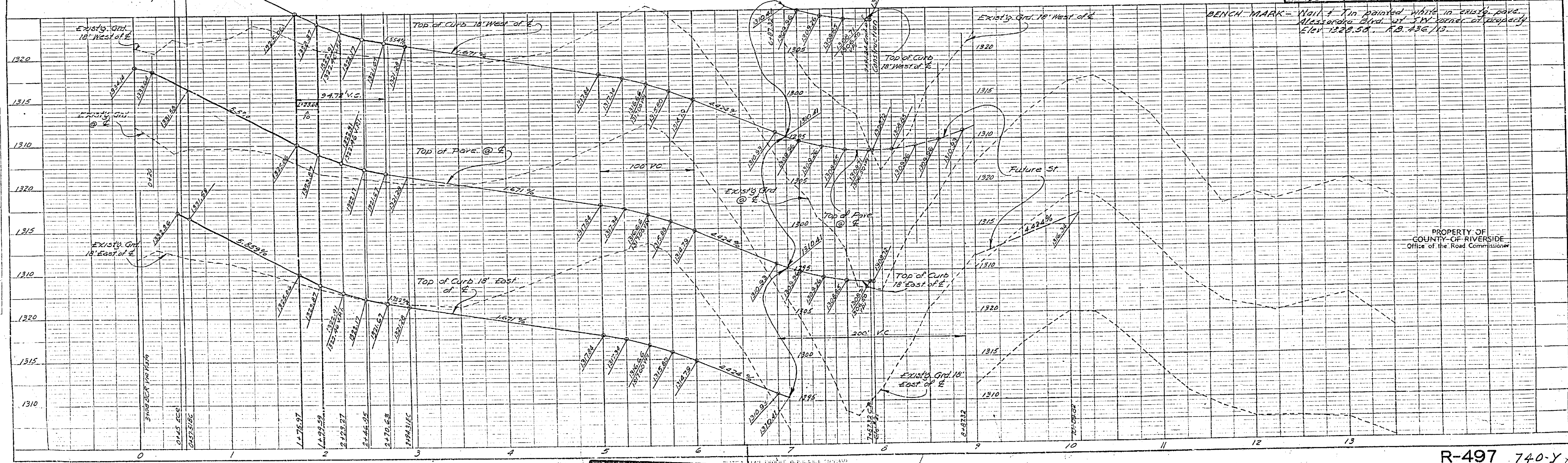
REVISIONS	DATE	BY
-----------	------	----

TRACT NO. 2121
STREET PLAN & PROFILE
WEST VIEW DRIVE

SCALE 1"=50'
DATE 7-60
DRAWN REC
CHECKED
F.B. 43G

ALBERT A. WEBB ASSOCIATES
CIVIL ENGINEERS
RIVERSIDE CALIFORNIA

W.O. 60-78
SHEET 4
OF 5 SHEETS
DWG. NO. 60-78A



PROPERTY OF COUNTY OF RIVERSIDE
Office of the Road Commission