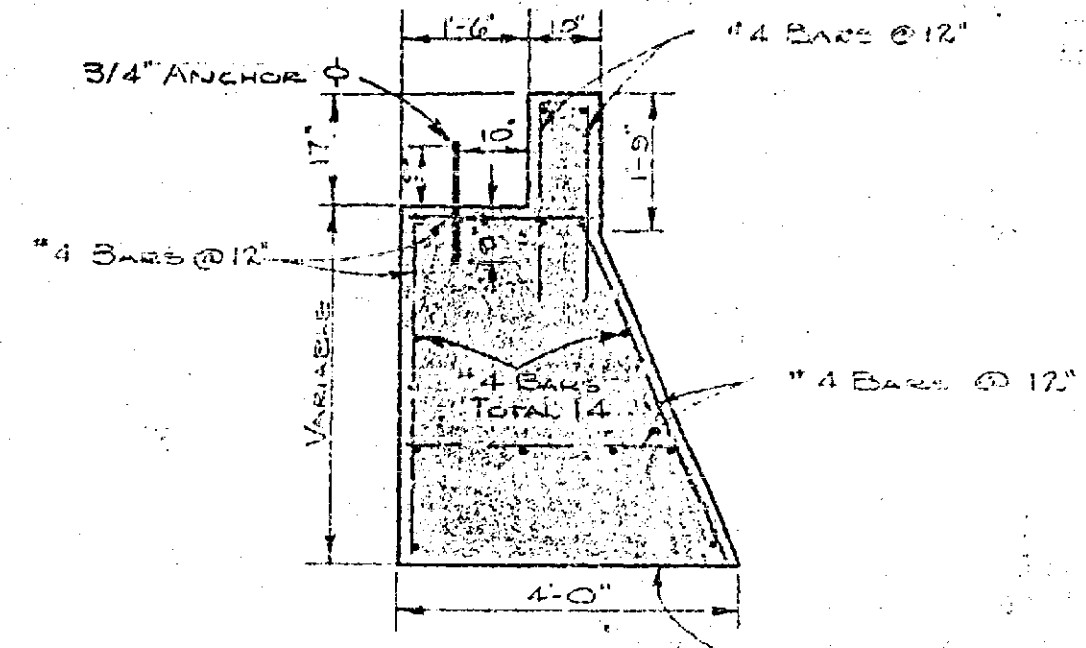


SEE PENNA. AVE. PLANS 703-G

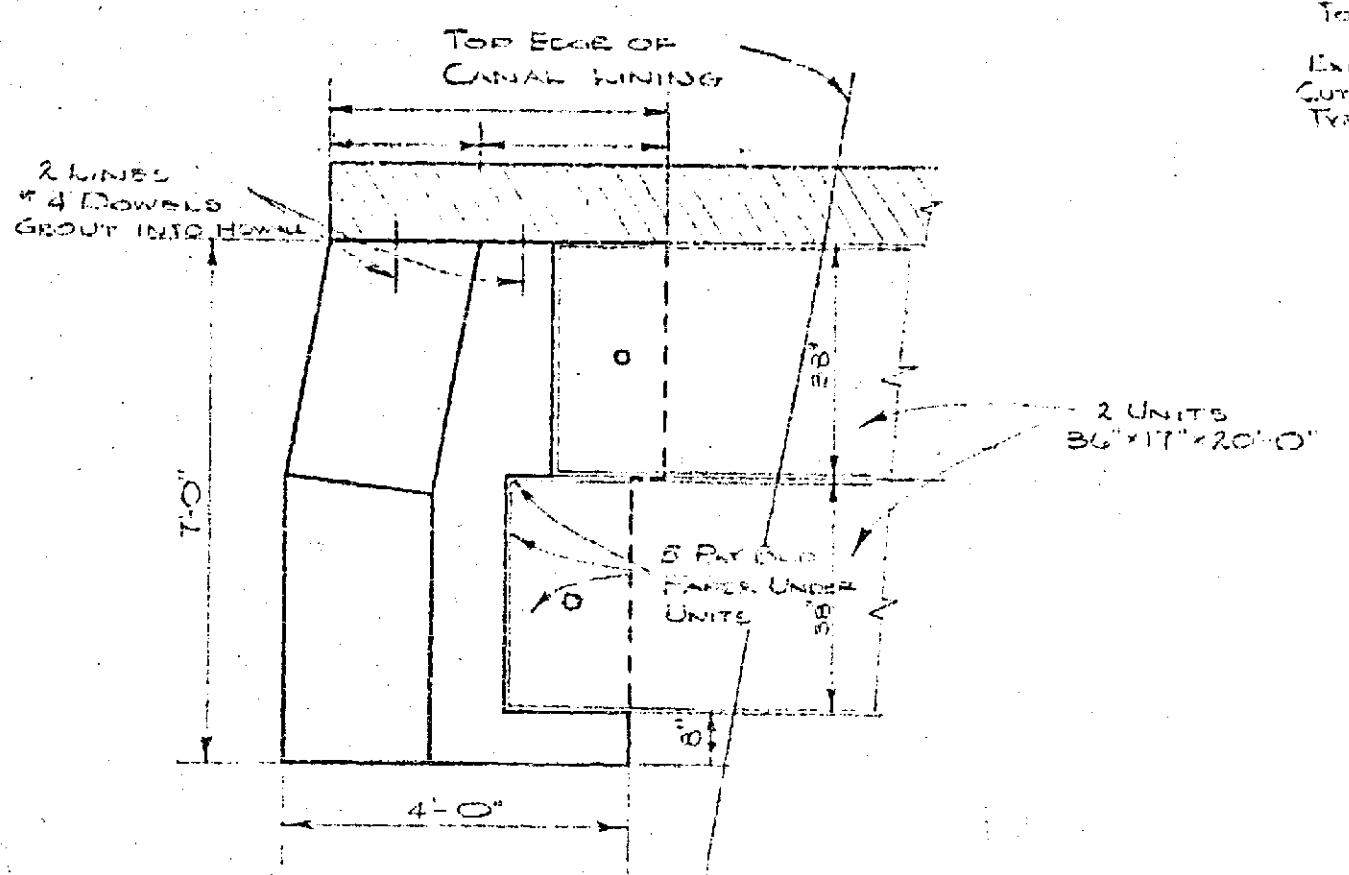
AS BILT PLANS

BRIDGE WIDENING DETAILS  
 AT  
 GAGE CANAL CROSSING  
 ON  
 PENNSYLVANIA AVE  
 OFFICE OF A. C. KEITH  
 COUNTY ROAD COMMISSIONER  
 RIVERSIDE CALIFORNIA, SEPT. 1957

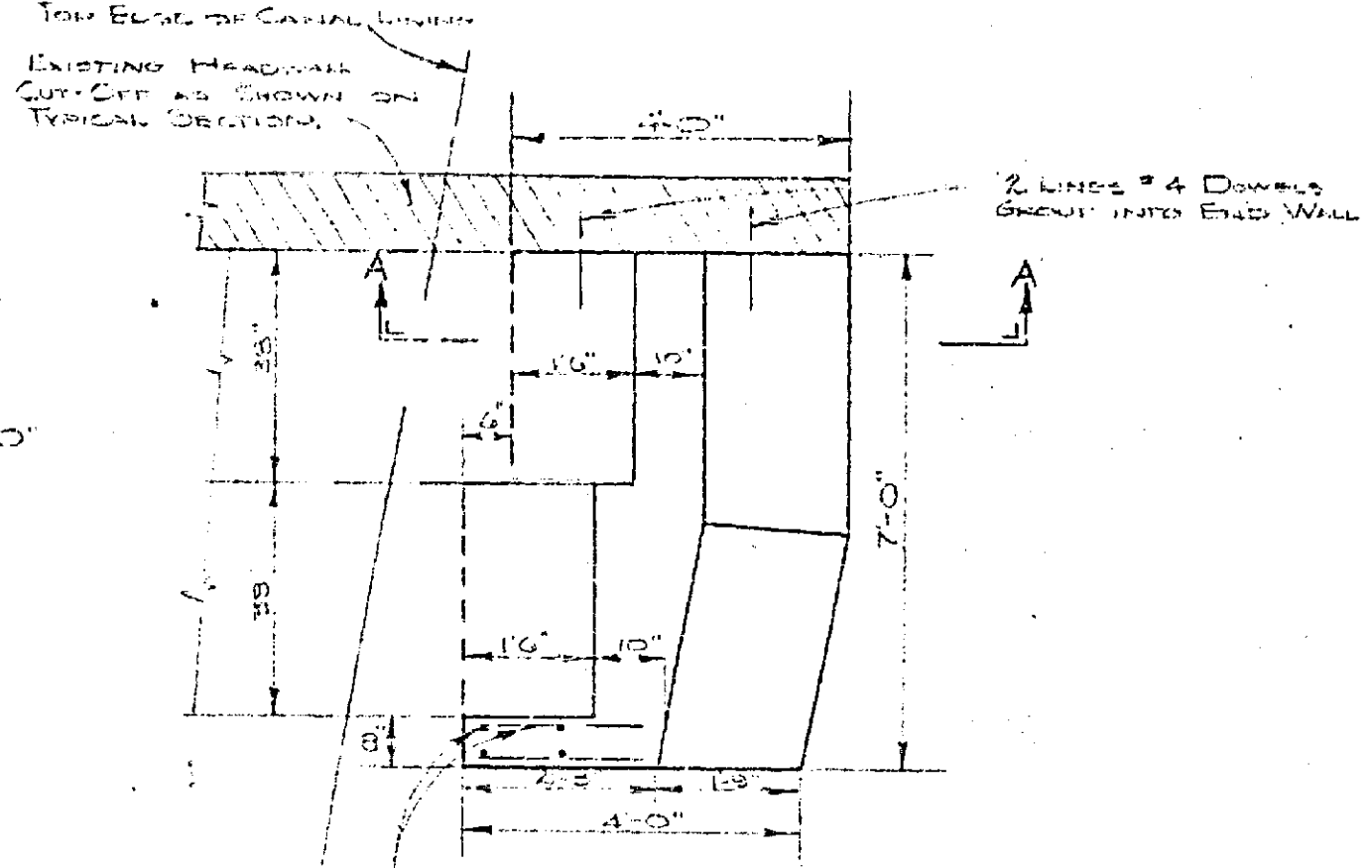
R-500 711-F



SECTION A-A  
REINFORCEMENT TYPICAL  
BOTH ABUTMENTS

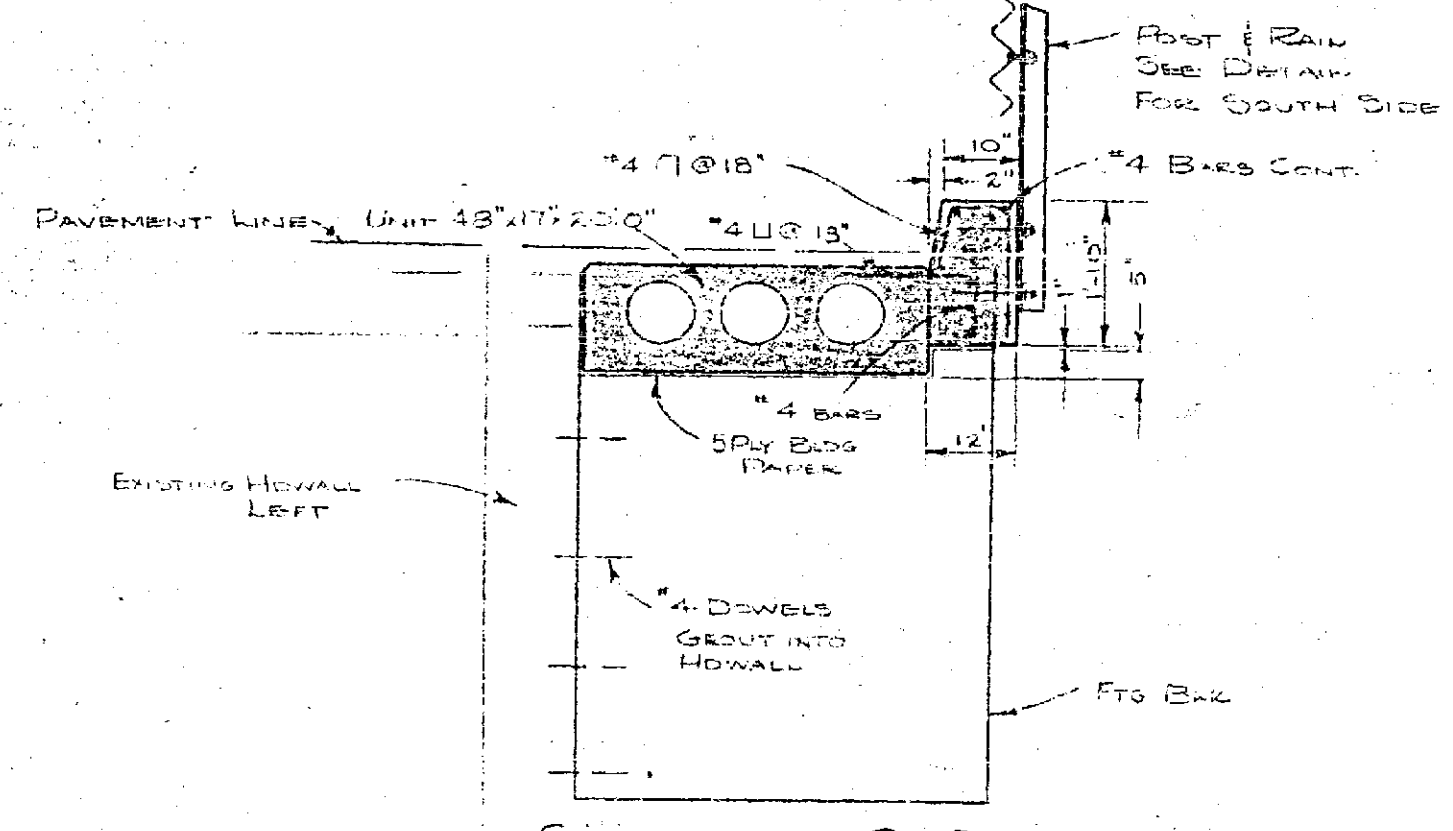


WEST ABUTMENT

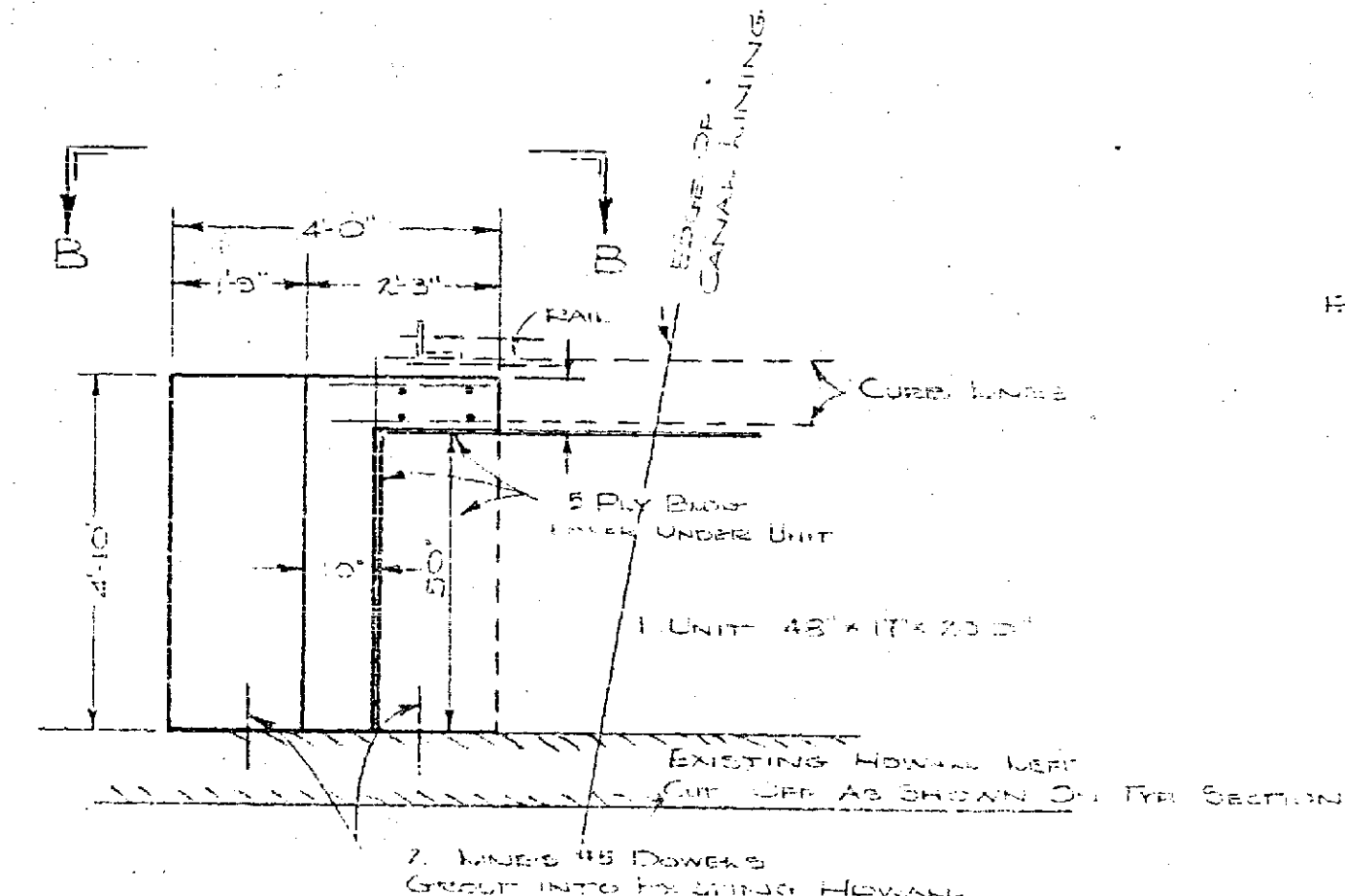


EAST ABUTMENT

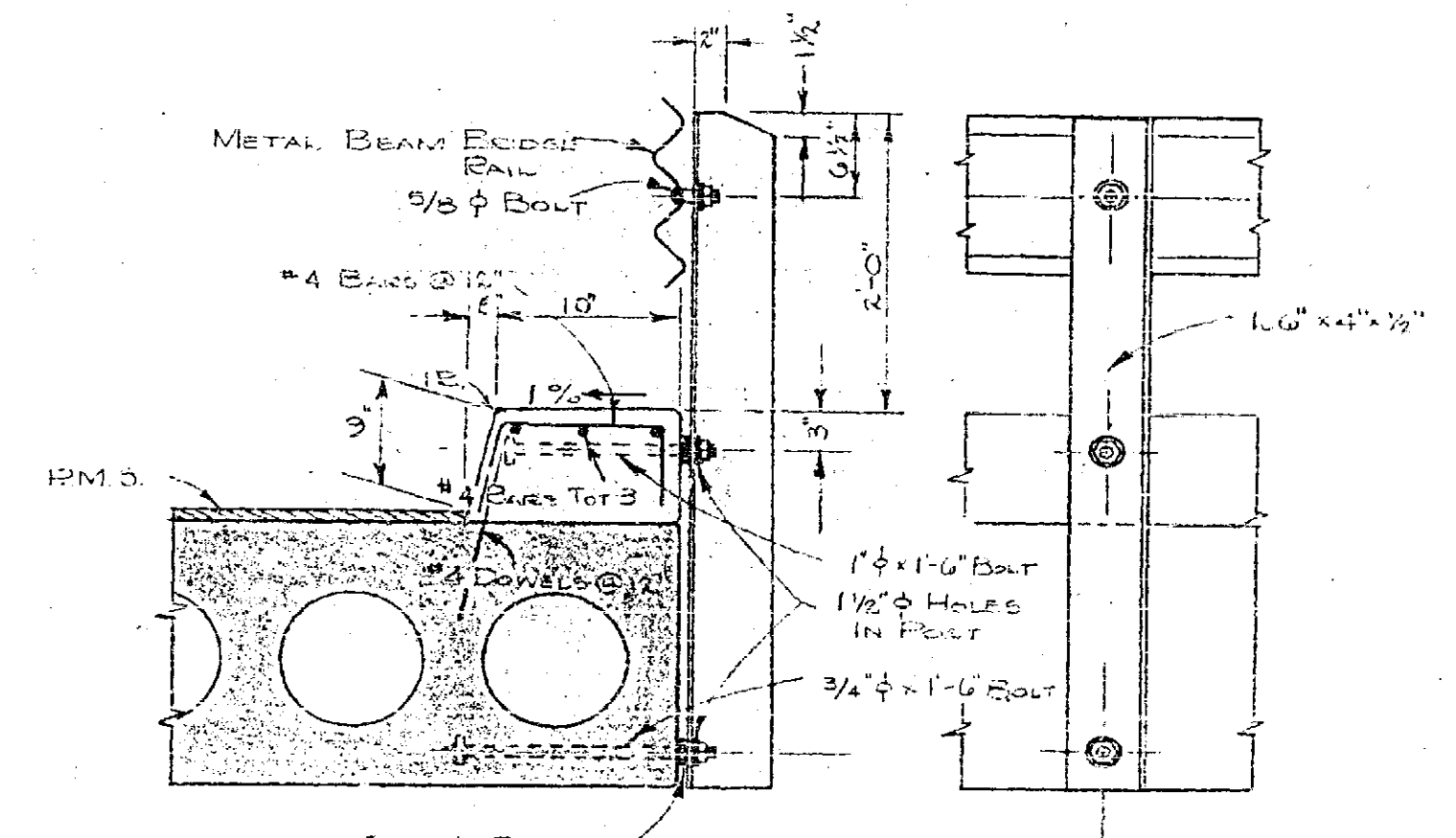
PART-PLAN-FOOTING BLOCKS  
SOUTH SIDE  
SCALE 1" = 2'



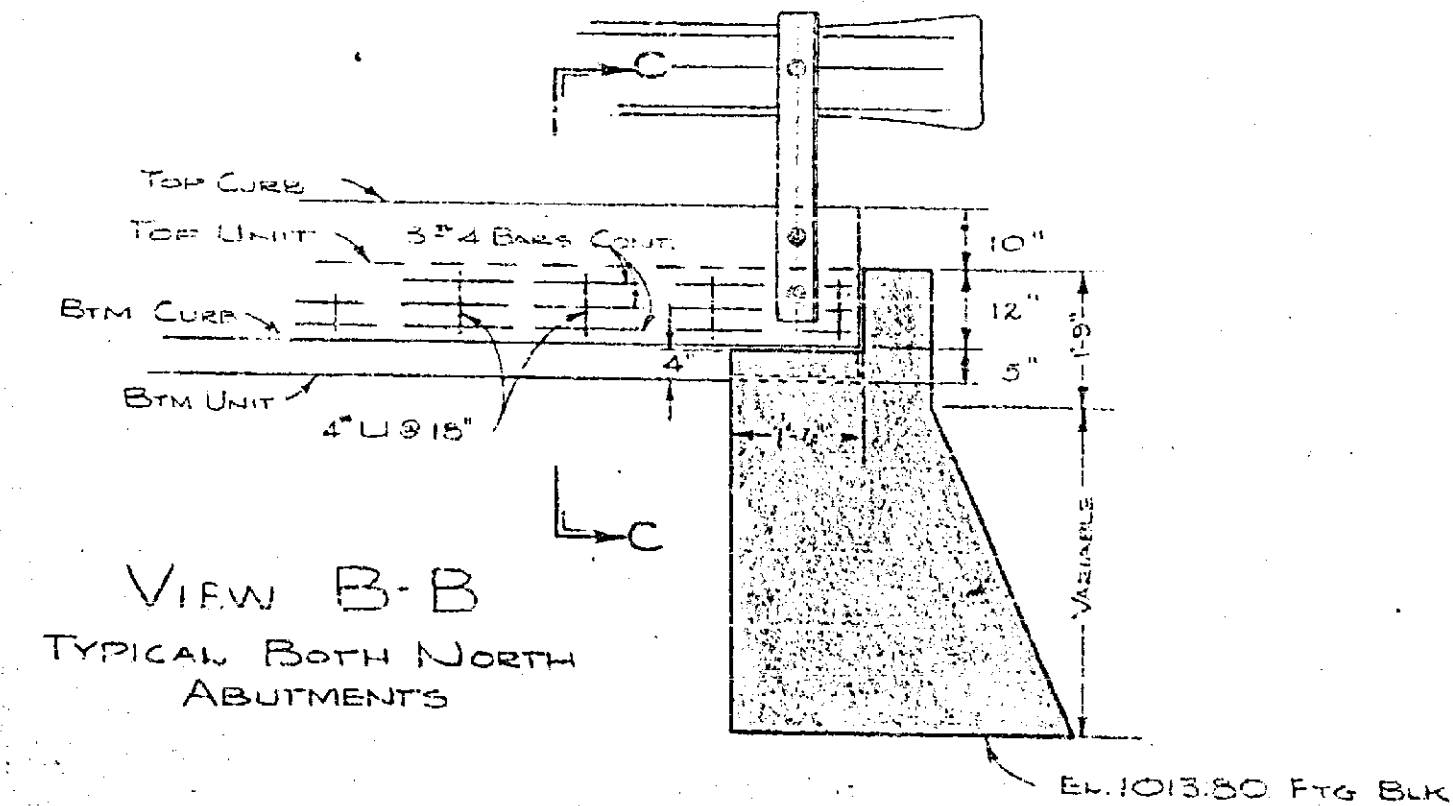
SECTION C-C  
N.W. ABUTMENT  
TYPICAL BOTH NORTH ABUTMENT



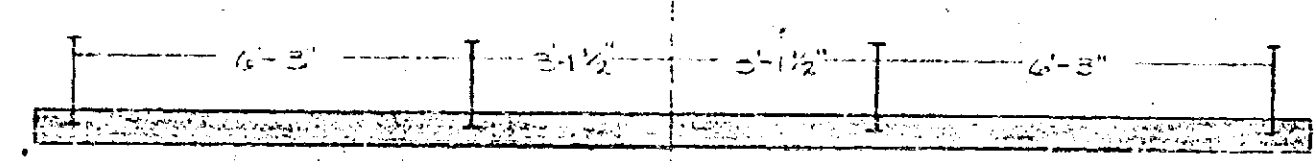
PLAN NORTH FOOTING BLOCKS  
BOTH SIDES SIMILAR  
SCALE 1" = 2'



CURB AND RAIL DETAIL  
SCALE 1" = 1'-0"

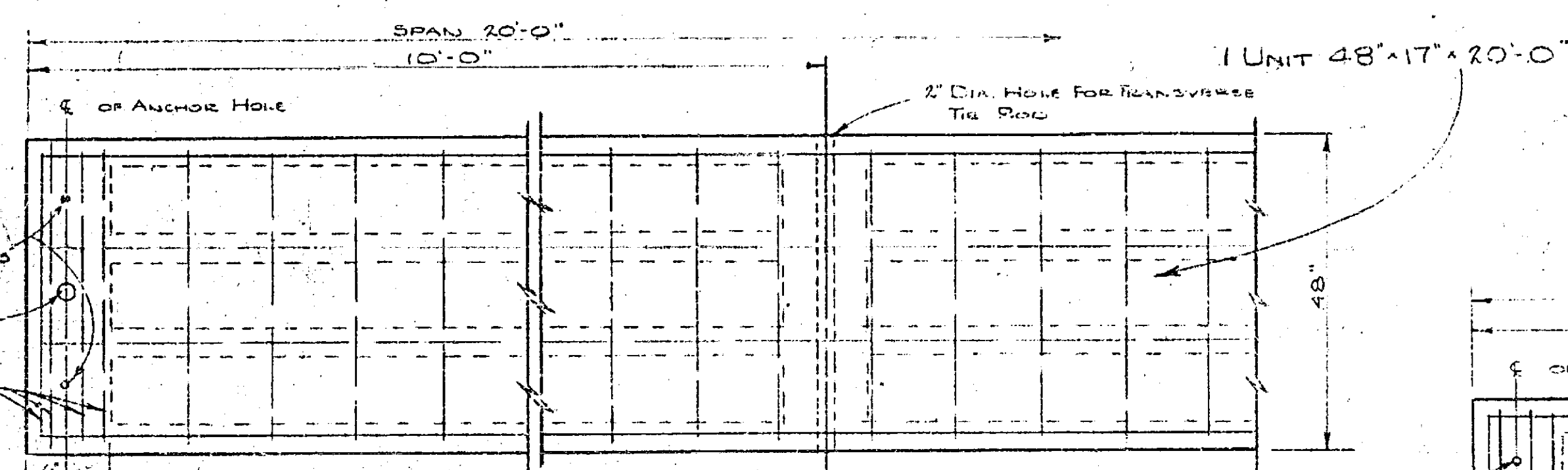
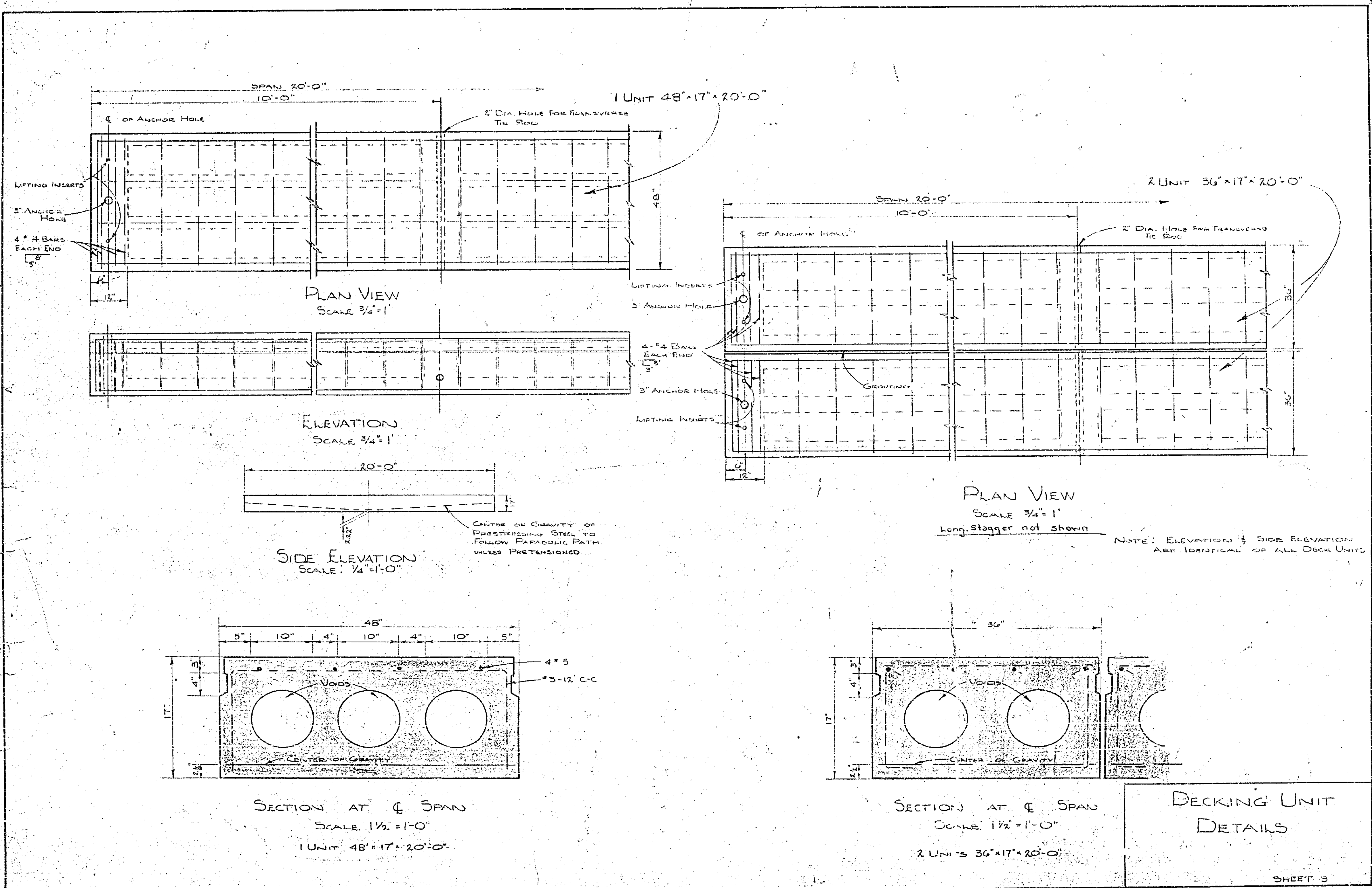


VIEW B-B  
TYPICAL BOTH NORTH  
ABUTMENTS

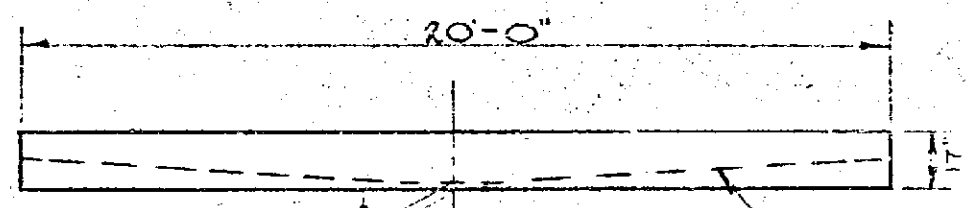
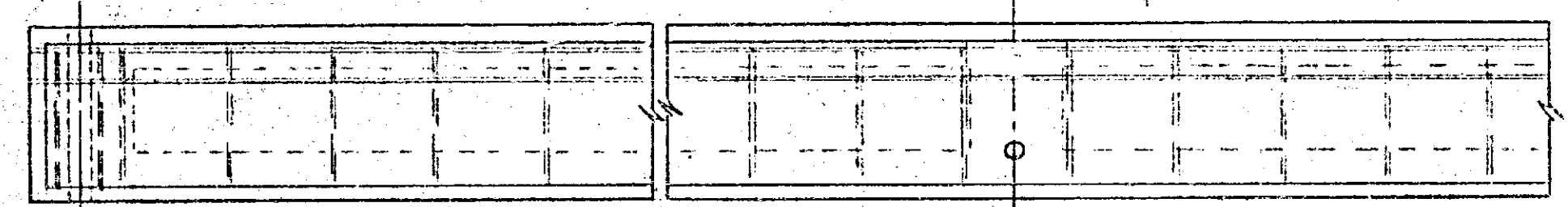


RAIL-POST SPACING  
3 SPACES @ 6'-3"  
NO SCALE

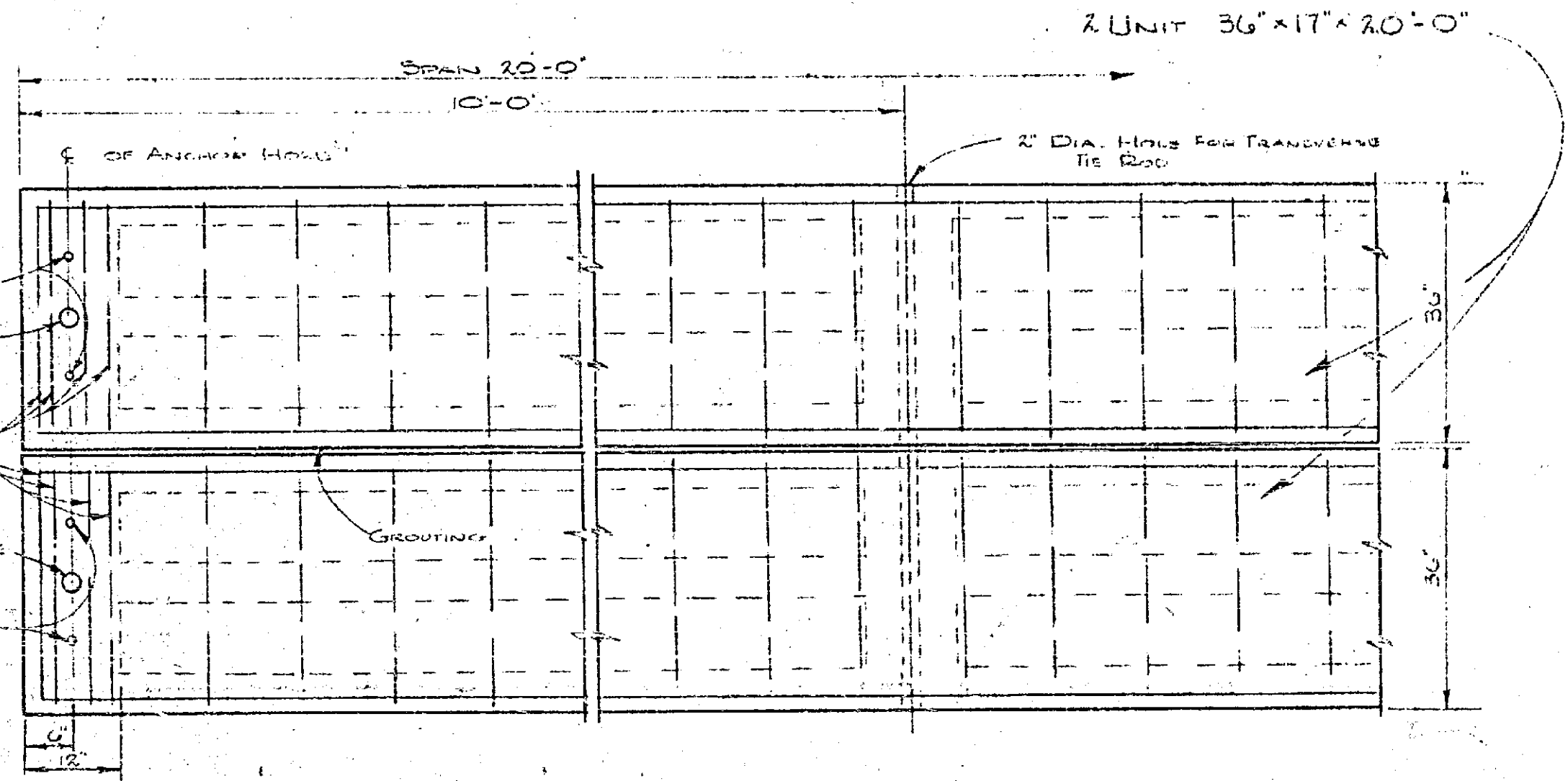
ABUTMENT & CURB  
DETAILS



PLAN VIEW  
SCALE 3/4" = 1'

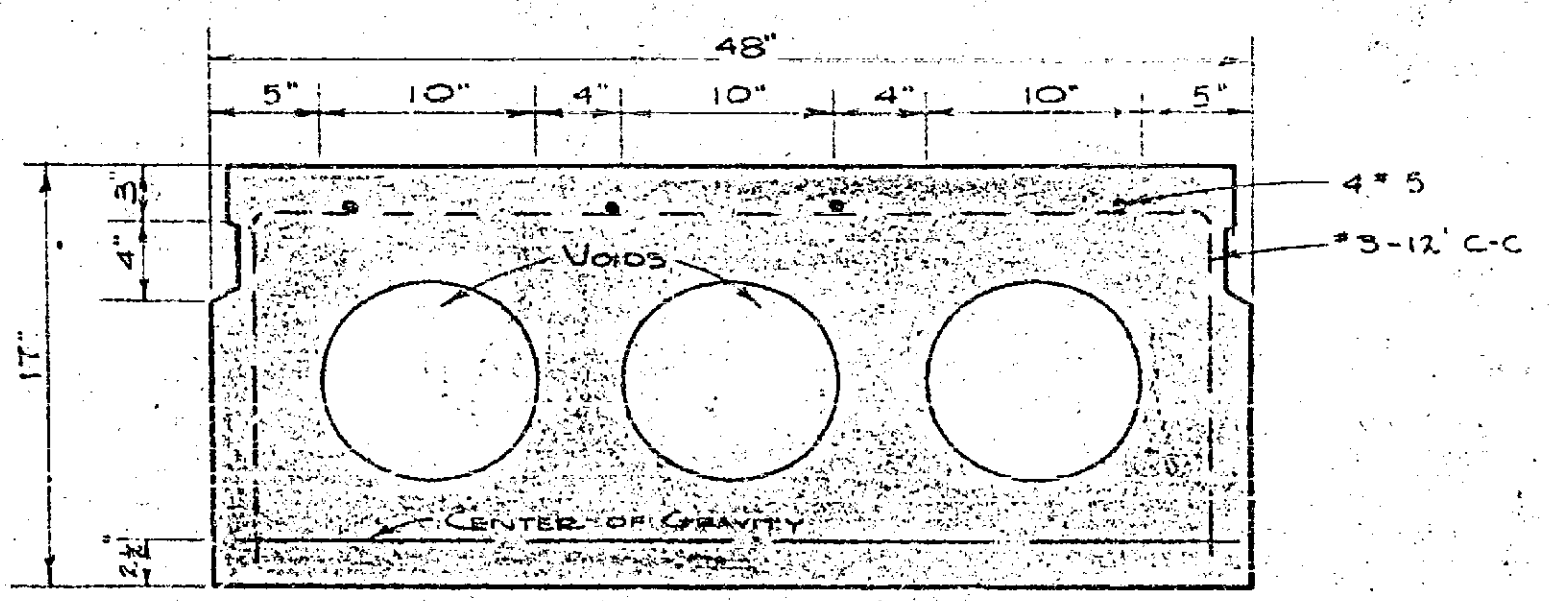


CENTER OF GRAVITY OF PRESTRESSING STEEL TO FOLLOW PARABOLIC PATH UNLESS PRETENSIONED

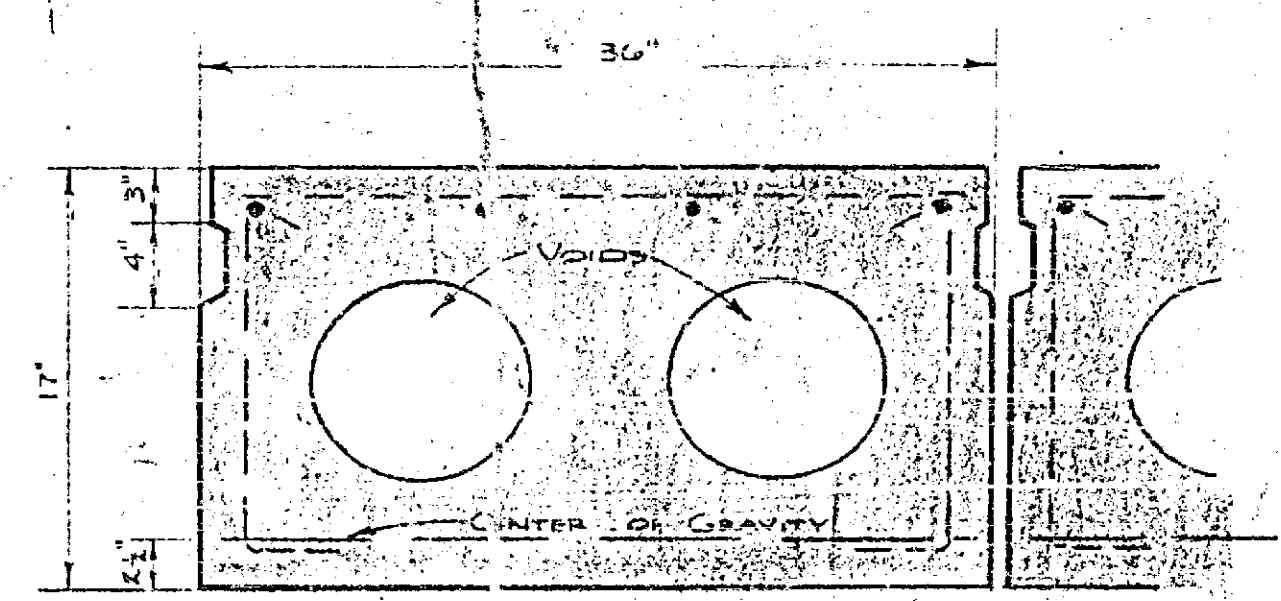


PLAN VIEW  
SCALE 3/4" = 1'  
Long stagger not shown

NOTE: ELEVATION & SIDE ELEVATION ARE IDENTICAL FOR ALL DECK UNITS



SECTION AT  $\phi$  SPAN  
SCALE 1 1/2" = 1'-0"  
1 UNIT 48" x 17" x 20'-0"



SECTION AT  $\phi$  SPAN  
SCALE 1 1/2" = 1'-0"  
2 UNIT 36" x 17" x 20'-0"

DECKING UNIT  
DETAILS

SHEET 3

R-500 211-E