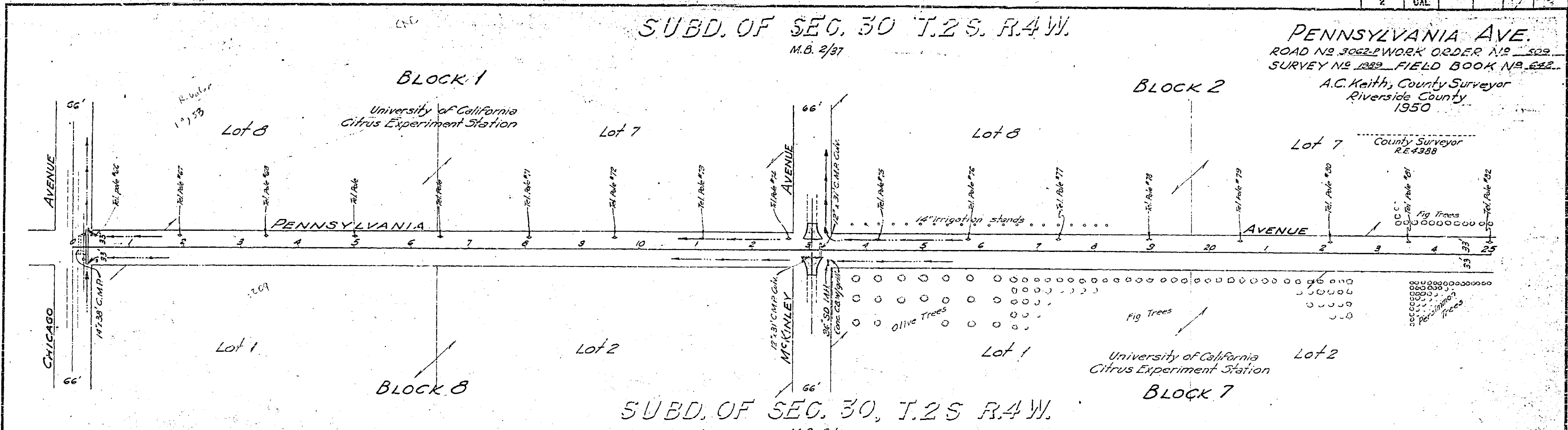


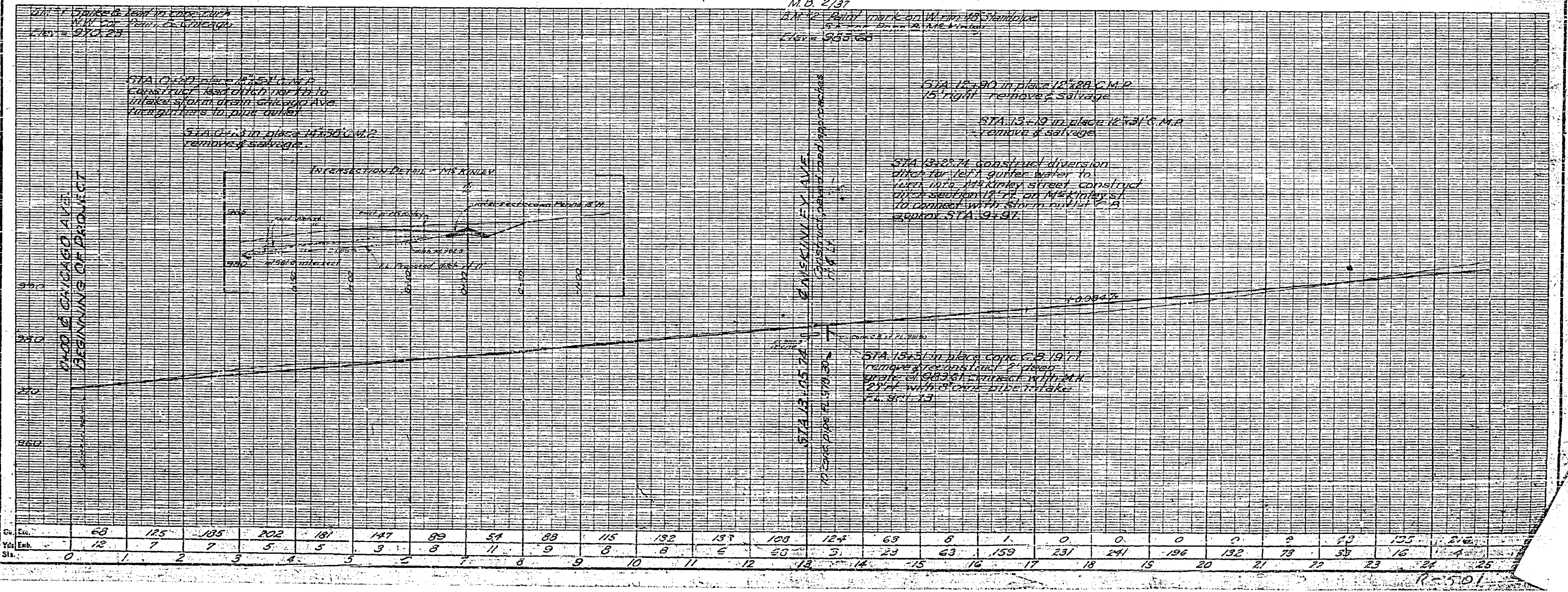
FED. ROAD DIST. NO.	STATE	PROJ. NO.	SHEET NO.	TOTAL SHEETS
2	CAL.		1	1

SUBD. OF SEC. 30 T.2 S. R.4 W.
M.B. 2/37

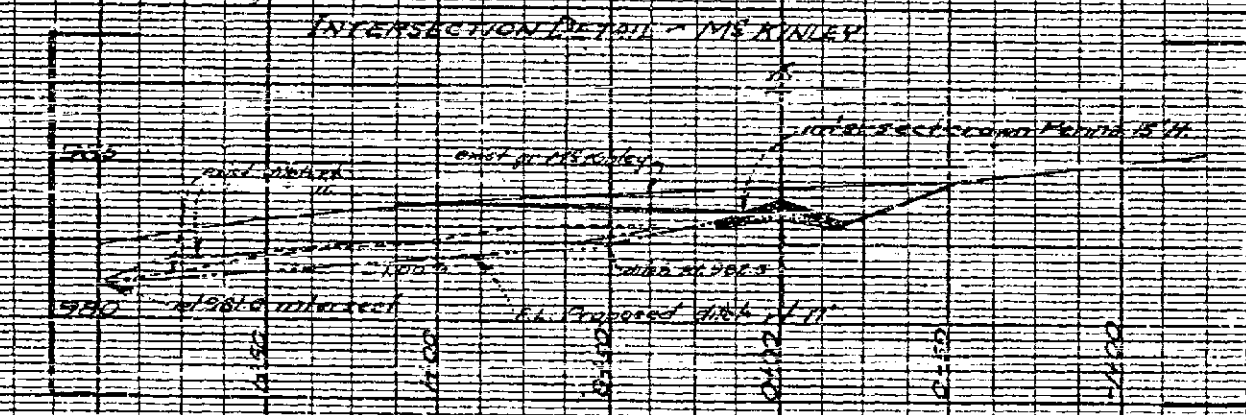
PENNSYLVANIA AVE.
ROAD NO. 3062 WORK ORDER NO. 502
SURVEY NO. 1389 FIELD BOOK NO. 642
A.C. Keith, County Surveyor
Riverside County
1950



SUBD. OF SEC. 30, T.2 S. R.4 W.
M.B. 2/37



FROM CHICAGO AVE. BEGINNING OF PROJECT



STA 13+24 Construct diversion ditch for left gutter water to run into McKinley street construct ditch 12' wide on McKinley st. to connect with storm main at approx. STA 9+91.

STA 15+53 in place Copc C.B. 19.11 remove pipe and install 2' dia. grate at 943.61 connect with M.H. 22' dia. with 8" cover pipe intake T.A. 501-13.

