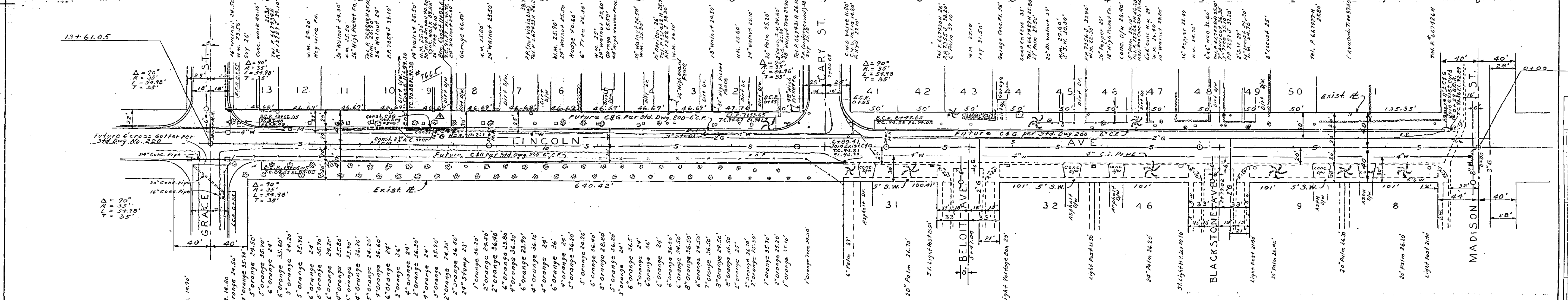
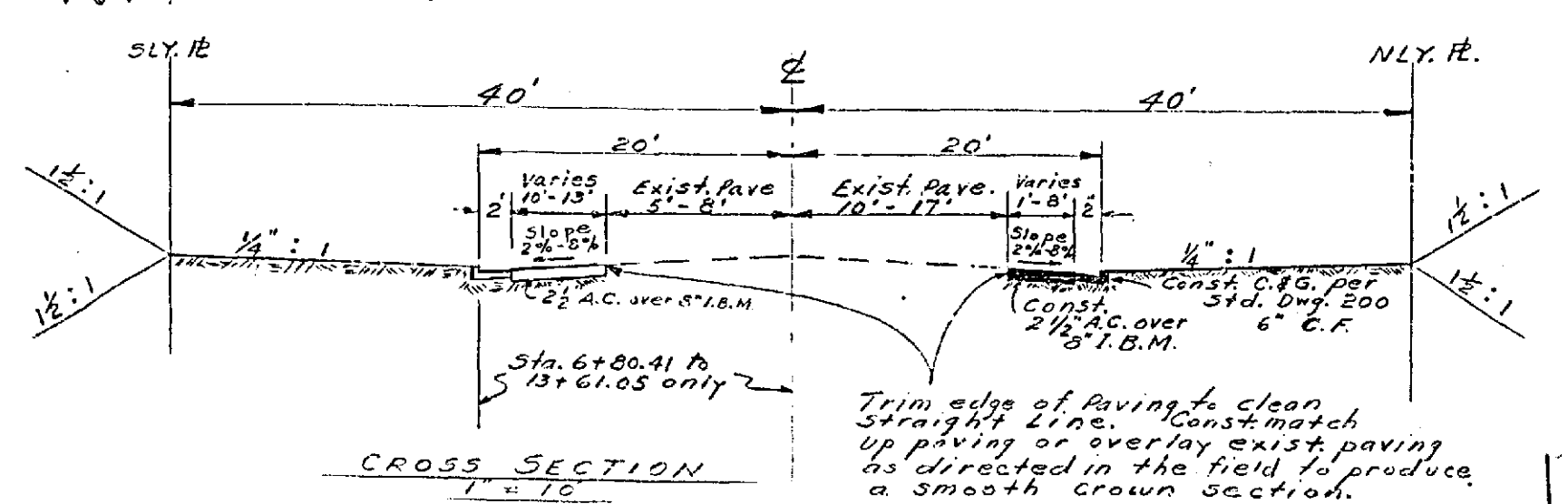


DATE	BY	REVISION



DATE	BY	REVISION



NOTE:
All construction shall be in accordance with Standard Drawings & Specifications No. 461 of the Department of Public Works, City of Riverside.

REVISIONS			CITY OF RIVERSIDE CALIFORNIA DEPARTMENT OF PUBLIC WORKS	
MARK	DATE	DESCRIPTION		
Δ	6-28-42	Const. Limits 30' held 10' 11' 12' 13' 14' 15' 16' 17' 18' 19' 20' 21' 22' 23' 24' 25' 26' 27' 28' 29' 30'	LINDOLN AVENUE MADISON TO GRACE	
DESIGNED BY		CHECKED BY	APPROVED BY	R-534 SHEET 1 OF 1
DRAWN BY	H.R.C.		DIRECTOR OF PUBLIC WORKS	
RECOMMENDED BY		ASSISTANT CITY ENGINEER	DATE: 7-17-1942	