

Arlanza Downs Sub

RIVERSIDE ENGINEERING COMPANY

FIELD BOOK NO.

3929 ORANGE STREET, RIVERSIDE, CALIFORNIA

JOB NO. 1444

TITLE "CATCH BASIN MODIFICATION - N. Side, Downs Ave. Sta. 1+75

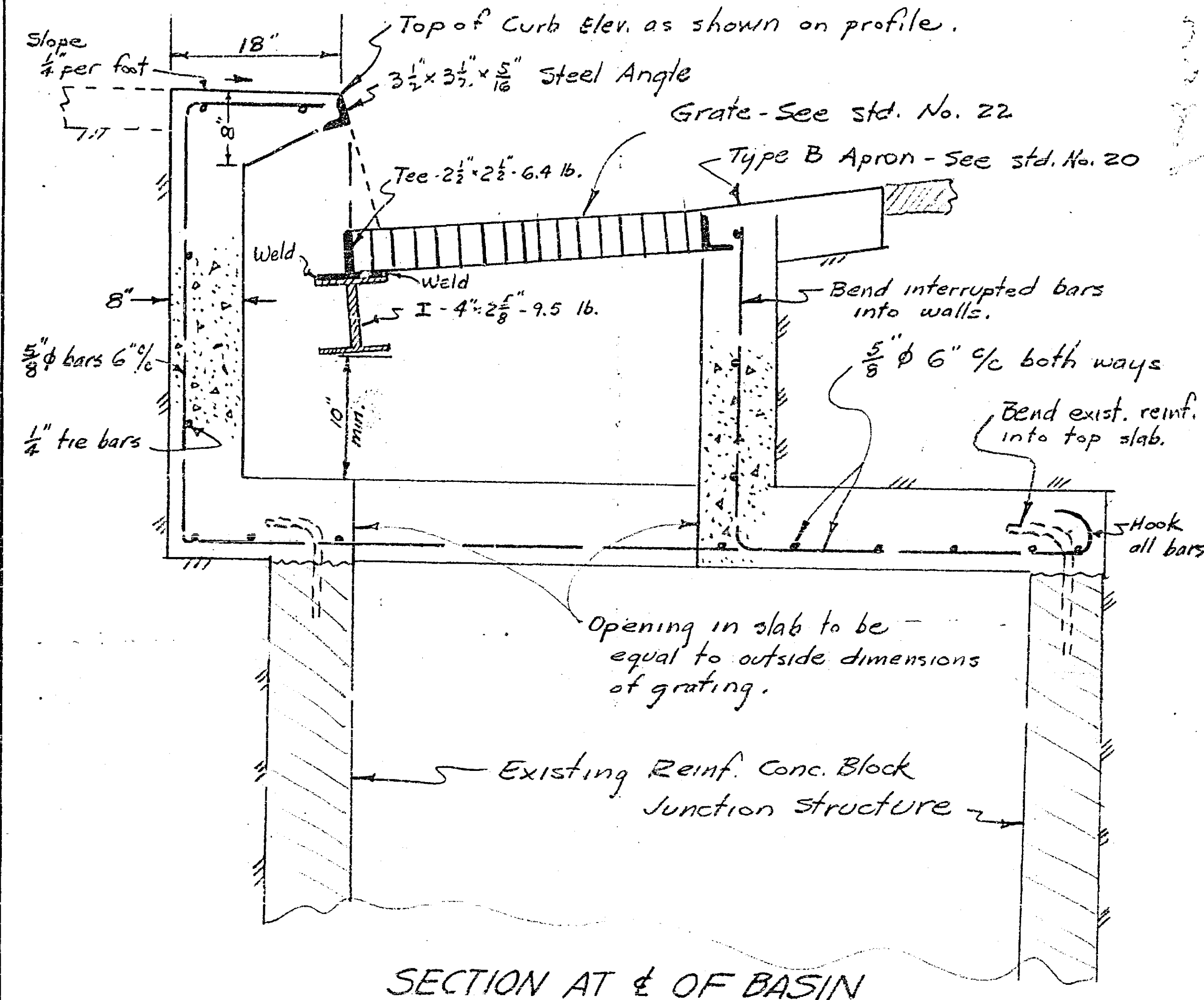
NO. 1 OF 1

SCALE None

PREPARED BY: G.C.

VIA NORTE DR.

DATE 6/27/56



Note: Structural shapes shall extend 6" into each end wall of the catch basin.

Place 3/4" ϕ steel steps 17" ϕ from top of basin to F.L. of pipe.

Curb opening to be same length as grate.

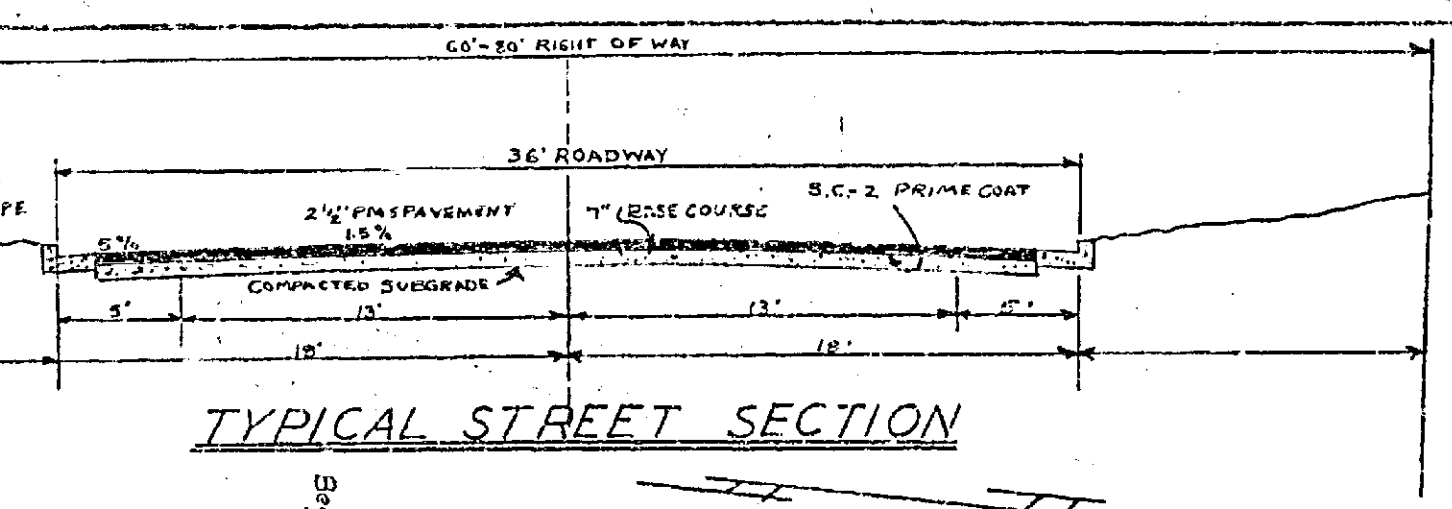
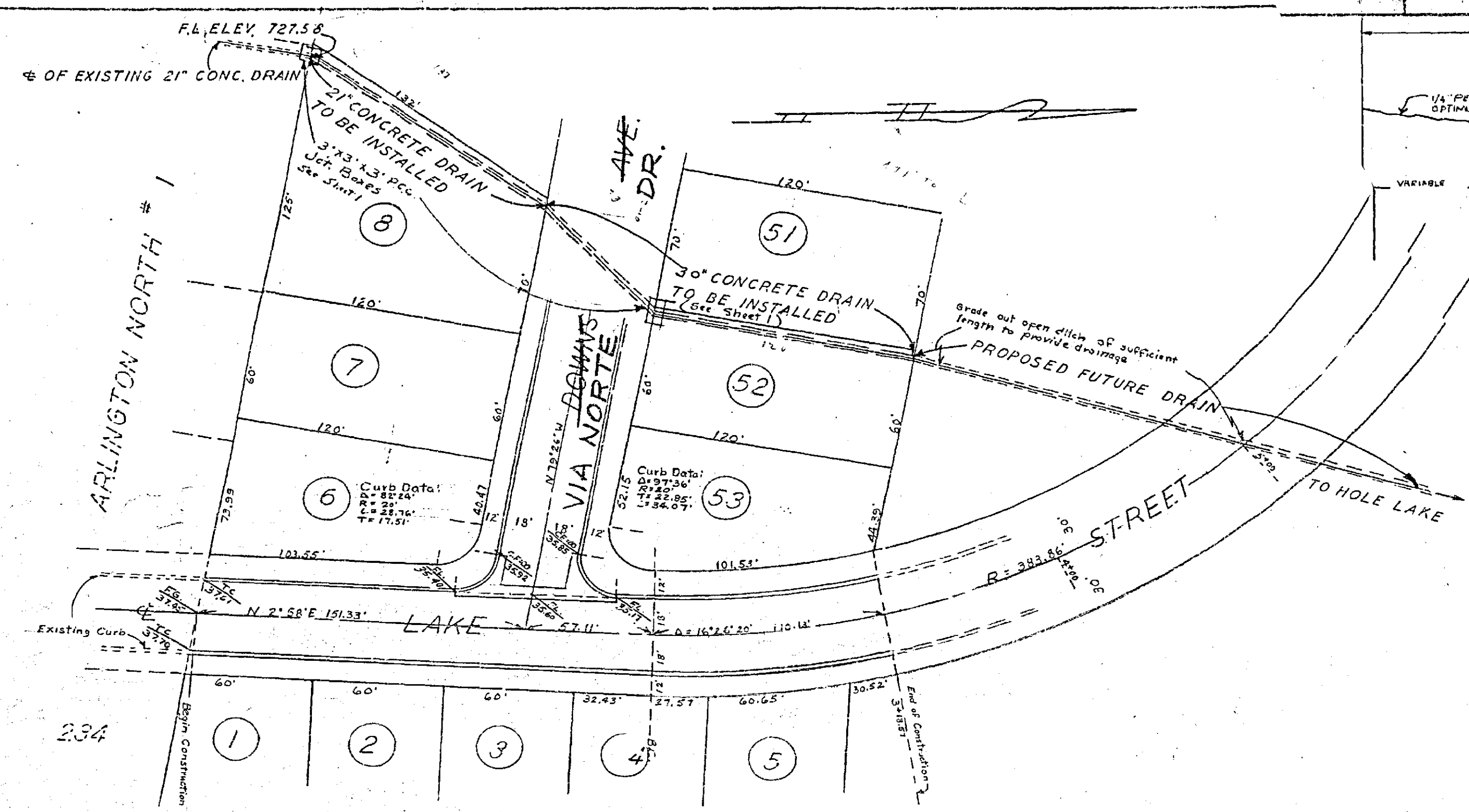
Grate to be removable.

Approved for County Rd. Dept. B.D. Powell Date 6-30-56

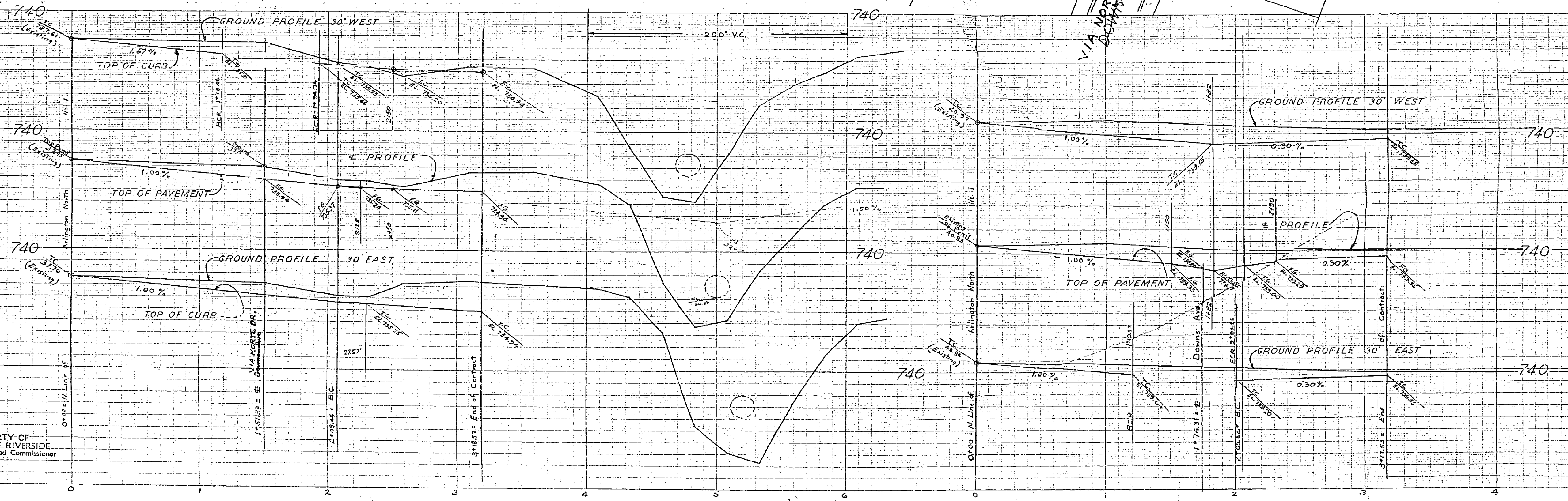
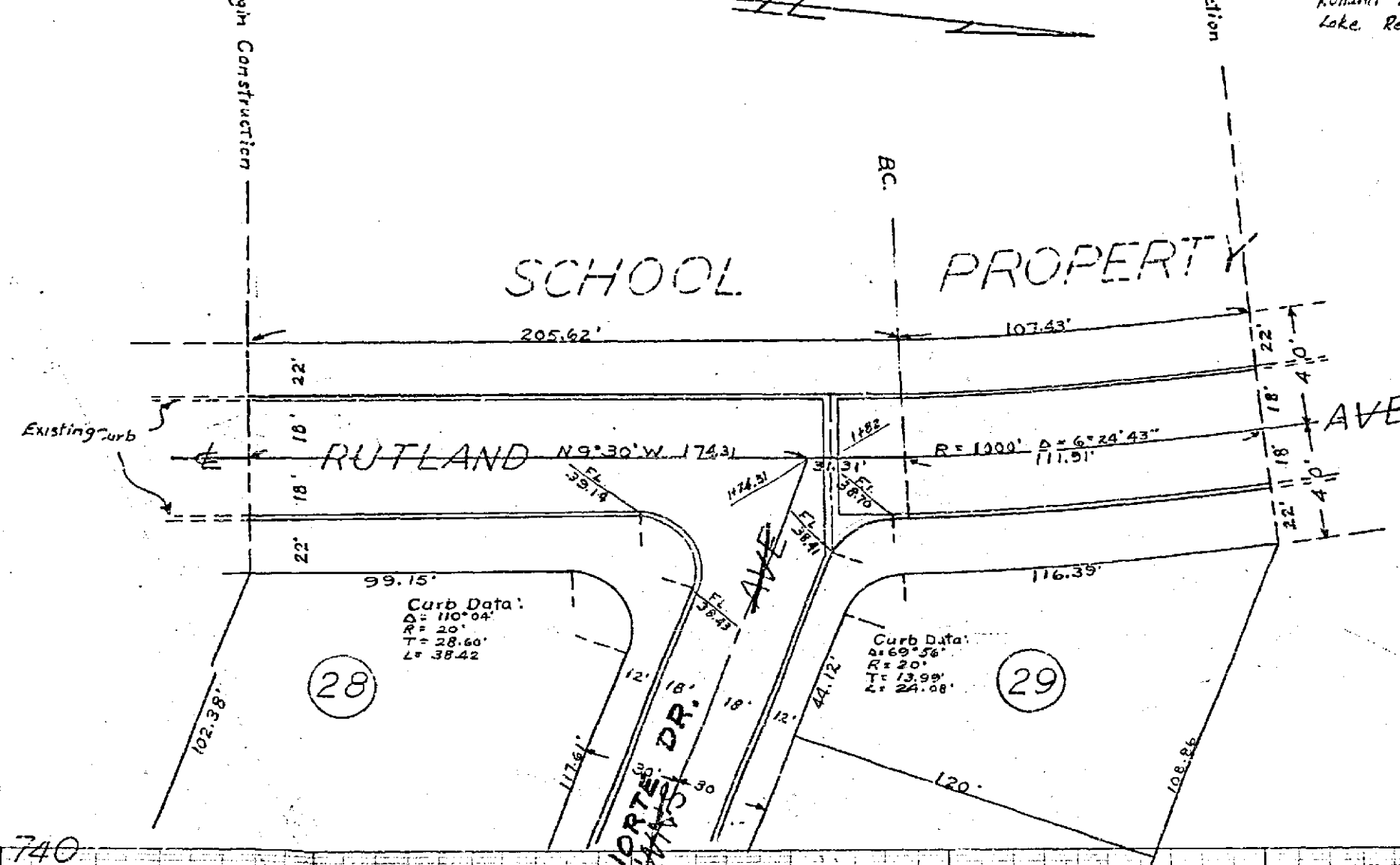
PROPERTY OF
COUNTY OF RIVERSIDE
Office of the Road Commissioner

R-544

718-Z



File No.	ARLANZA DOWNS NO. 1		
Project No.	STREETS		
Checked By			
Approved	CE 2047	Approved	6/11/55
STEWART & MAXWELL			
Engineering & Surveying			
538 8th St.	San Bernardino, Calif.	Sheet	9 of 9
HOR. 1" = 40'		VERT. 1" = 8'	
Rolland Revised Dec. 1, 1955 by Riverside Engineering Co. Lake Rev. 2/19/56 R.E. Eng. Co.			



PROPERTY OF
COUNTY OF RIVERSIDE
Office of the Road Commissioner

HEUFFEL & ESSER CO.
NEW YORK

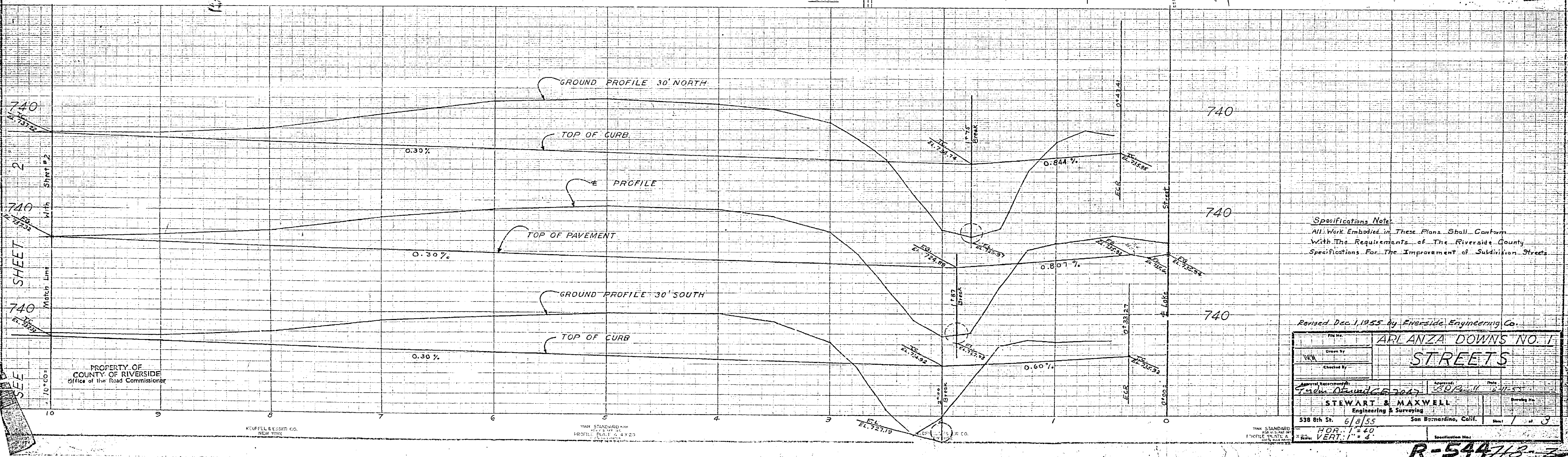
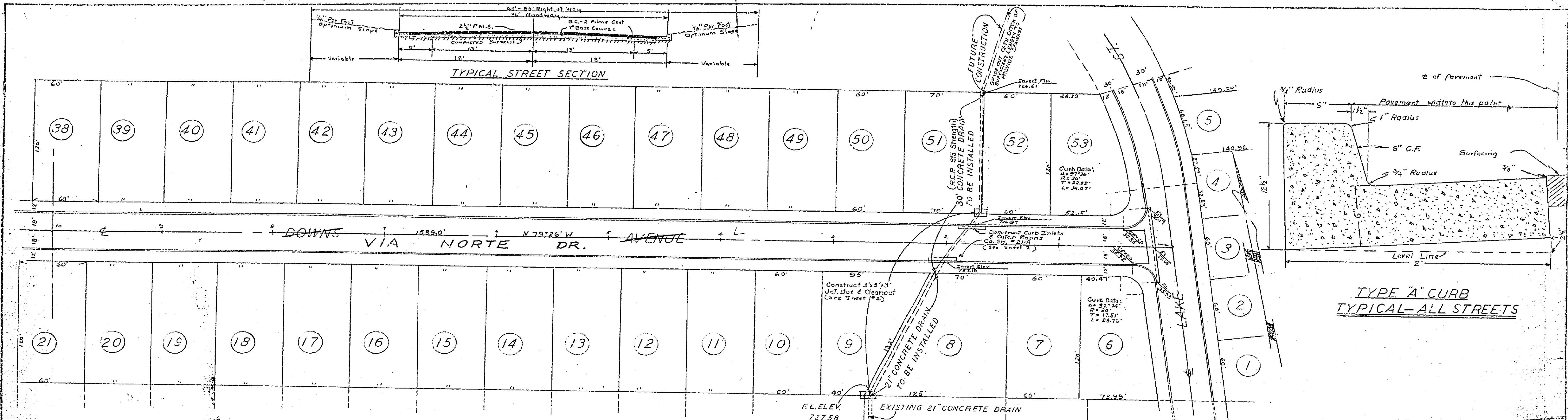
THIS STANDARD PLAN
IS A SERVICE OF THE
HEUFFEL & ESSER CO.
NEW YORK

HEUFFEL & ESSER CO.
NEW YORK

THIS STANDARD PLAN
IS A SERVICE OF THE
HEUFFEL & ESSER CO.
NEW YORK

HEUFFEL & ESSER CO.
NEW YORK

R-544 718-Z



PROPERTY OF
COUNTY OF RIVERSIDE
Office of the Road Commissioner

KEUFFEL & ESSER CO.
NEW YORK

1956 STANDARD
PROFILING PLATE
MADE IN U.S.A.

1956 STANDARD
PROFILING PLATE
MADE IN U.S.A.

Title: ARLANZA DOWNS NO. 1 STREETS	
Drawn by: VEM	Checked by: J. M. ...
Designed by: J. M. ...	Approved by: J. M. ...
STEWART & MAXWELL Engineering & Surveying 538 8th St. San Bernardino, Calif.	
Date: 6/8/55	
Scale: HOR. 1" = 40' VERT. 1" = 4'	

R-544713-3

