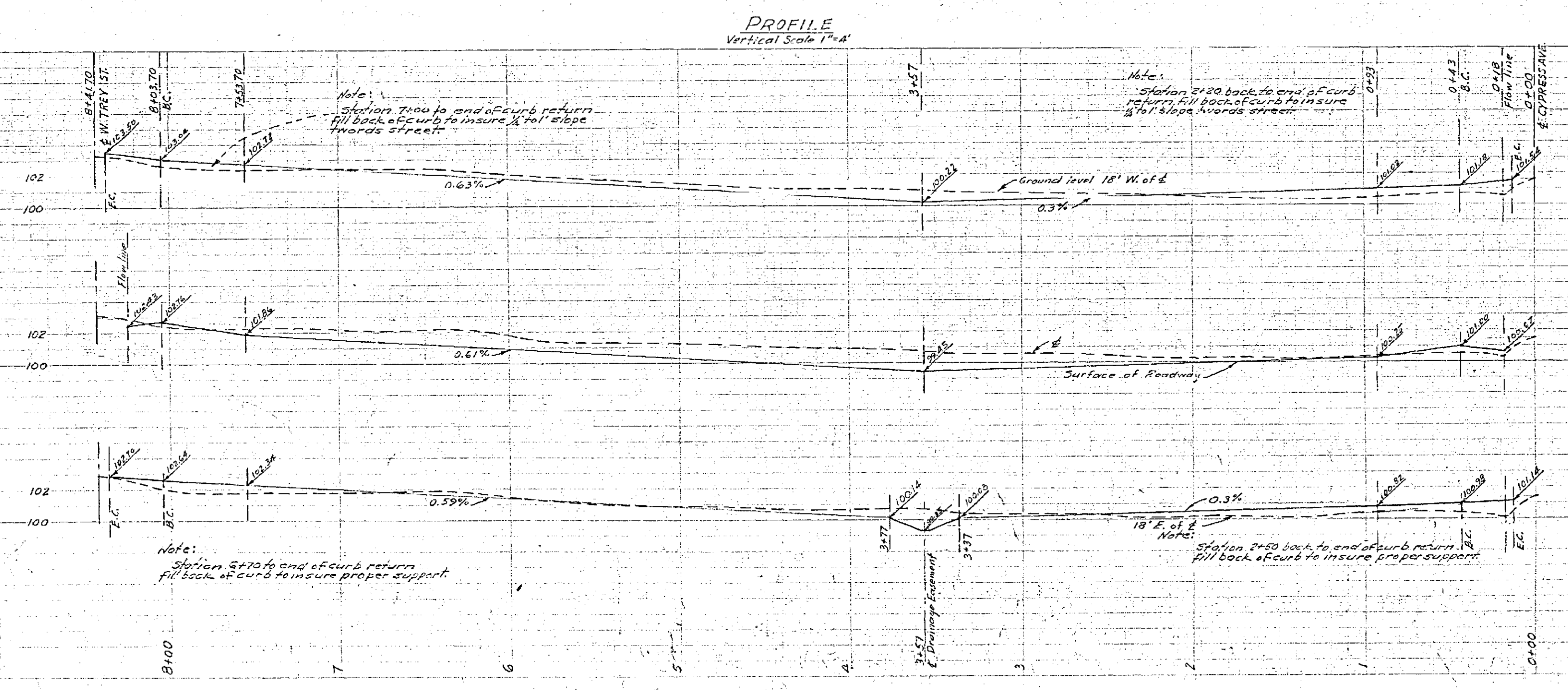
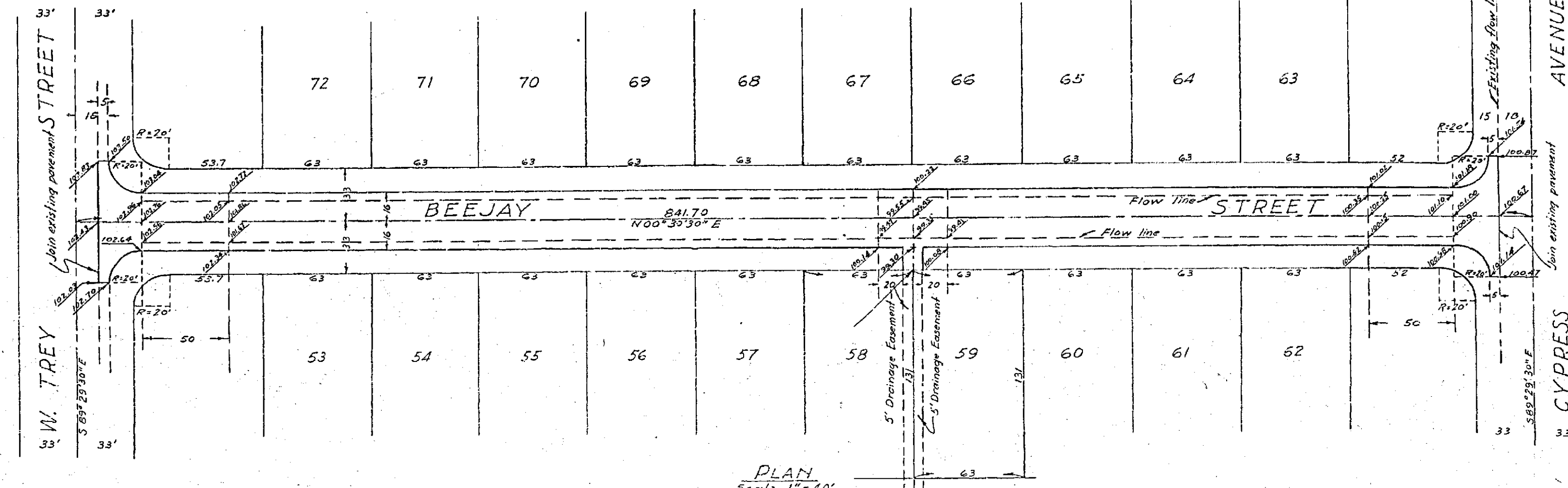
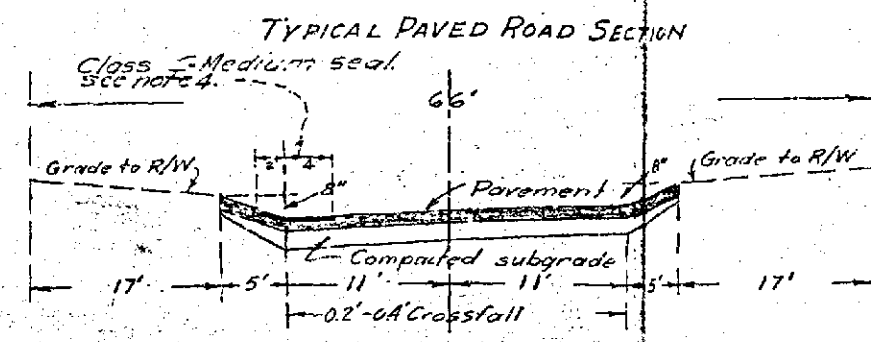


**STREET PLAN AND PROFILE**  
**OF**  
**BEEJAY STREET**  
**IN**  
**ANZA SIERRA TRACT**

UNIT NO. 2  
 ALBERT A. WEBB ASSOCIATES  
 CIVIL ENGINEERS  
 SEPTEMBER 1952 SCALE 1"=40'



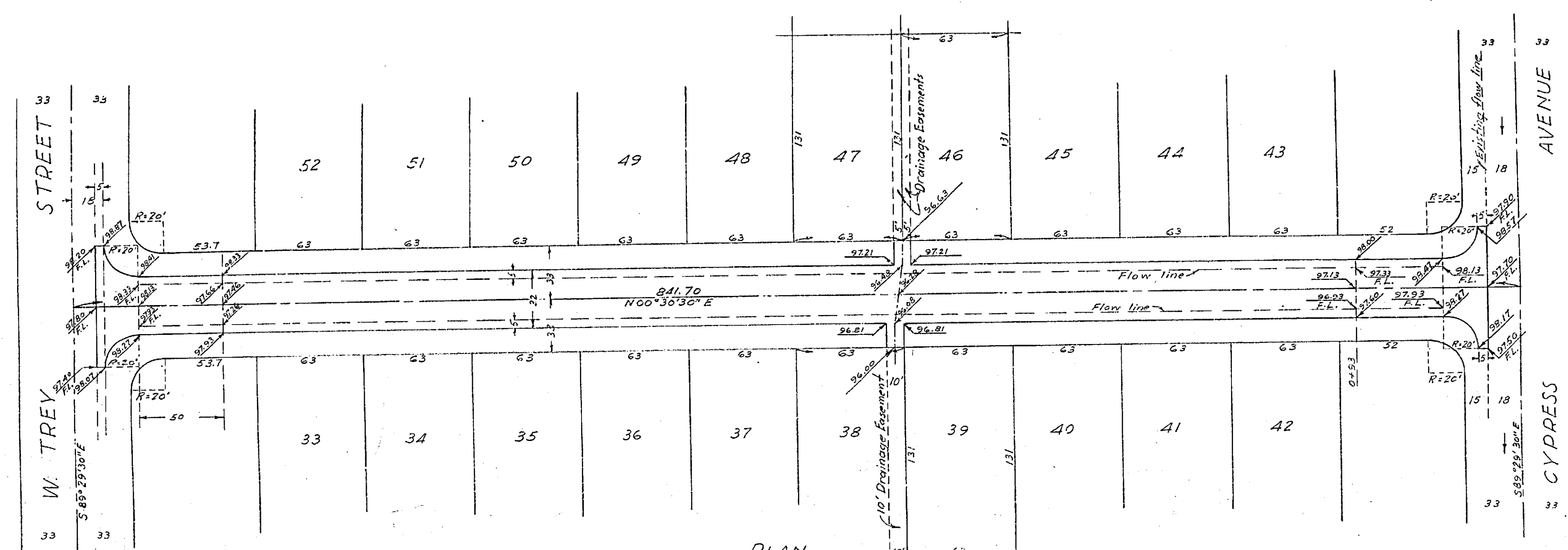
B.M. is E. bolt on F.H. #65 near int. of Noble St. & W. Trey St.  
 Elev. 100.00 (assumed)

- General Notes:
1. Base and road mix surfacing to be 4" thick and aggregate material as specified by the County Road Commission.
  2. Original ground and final surfacing to be compacted to 95% of ultimate.
  3. Class "D" Soil (as California Highways Standard) shall be applied to all surfacing except 0.5" to 1.0" in 12" below.
  4. Class "C" Medium Seal surfacing shall be used in all areas where emulsion shall be placed where shown on the plans.

Approved September 16, 1952  
 A.C. Keith  
 County Surveyor  
 by S.T. Hensley  
 Deputy

PROPERTY OF  
 COUNTY OF RIVERSIDE  
 Office of the Road Commissioner

R-54577-6 11/29



PLAN  
Scale 1"=40'

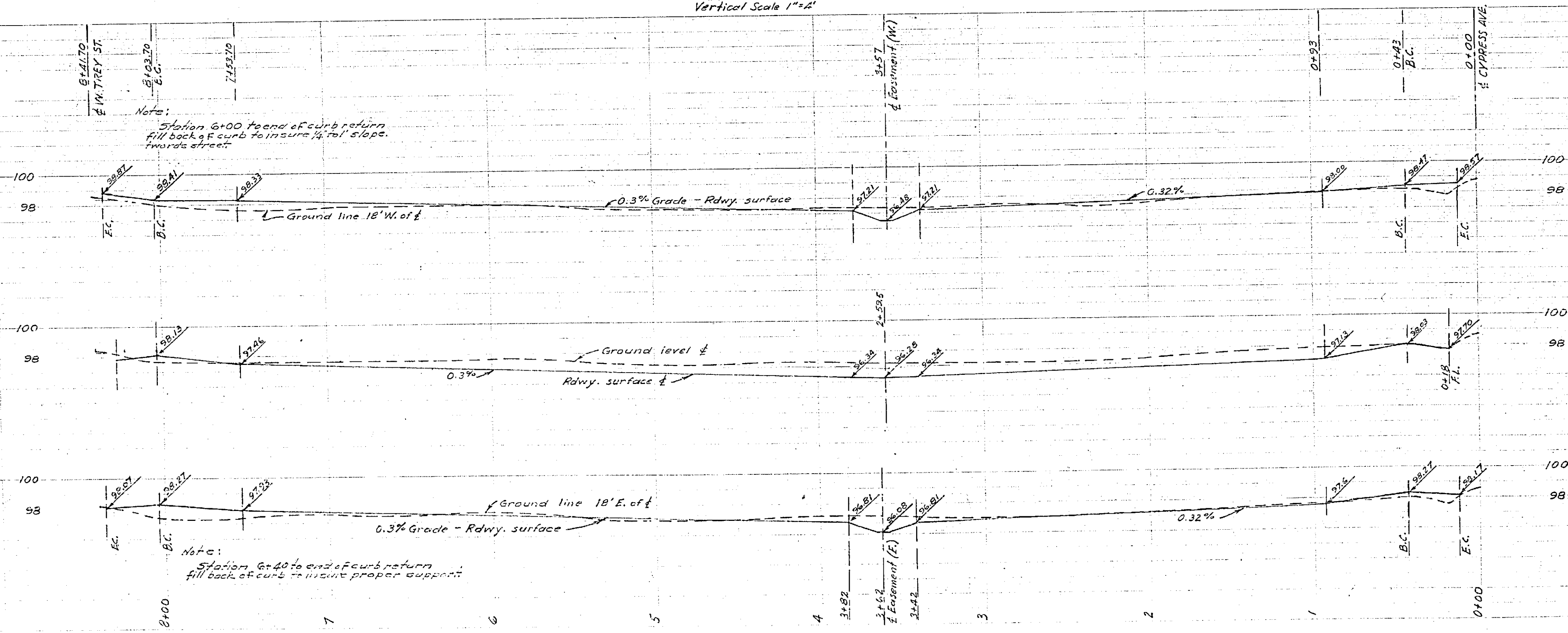
STREET PLAN AND PROFILE  
OF  
NOBLE STREET  
IN  
ANZA SIERRA TRACT  
UNIT NO 2

ALBERT A. WEBB ASSOCIATES  
CIVIL ENGINEERS

SEPTEMBER 1952

SCALE 1"=40'

PROFILE  
Vertical Scale 1"=4'



B.M. is E. bolt on F.H. #65 near int. of Noble St. & W. Trey St.  
Elev. 100.00 (assumed).

Note:  
Station 6+00 to end of curb return  
fill back of curb to insure 1/4" slope  
towards street.

Note:  
Station 6+40 to end of curb return  
fill back of curb to insure proper support.

Approved September 16, 1952  
A.C. Keith  
County Surveyor  
by J.T. Woodruff  
Deputy

PROPERTY OF  
COUNTY OF RIVERSIDE  
Office of the Road Commissioner

R-545 713-E-11