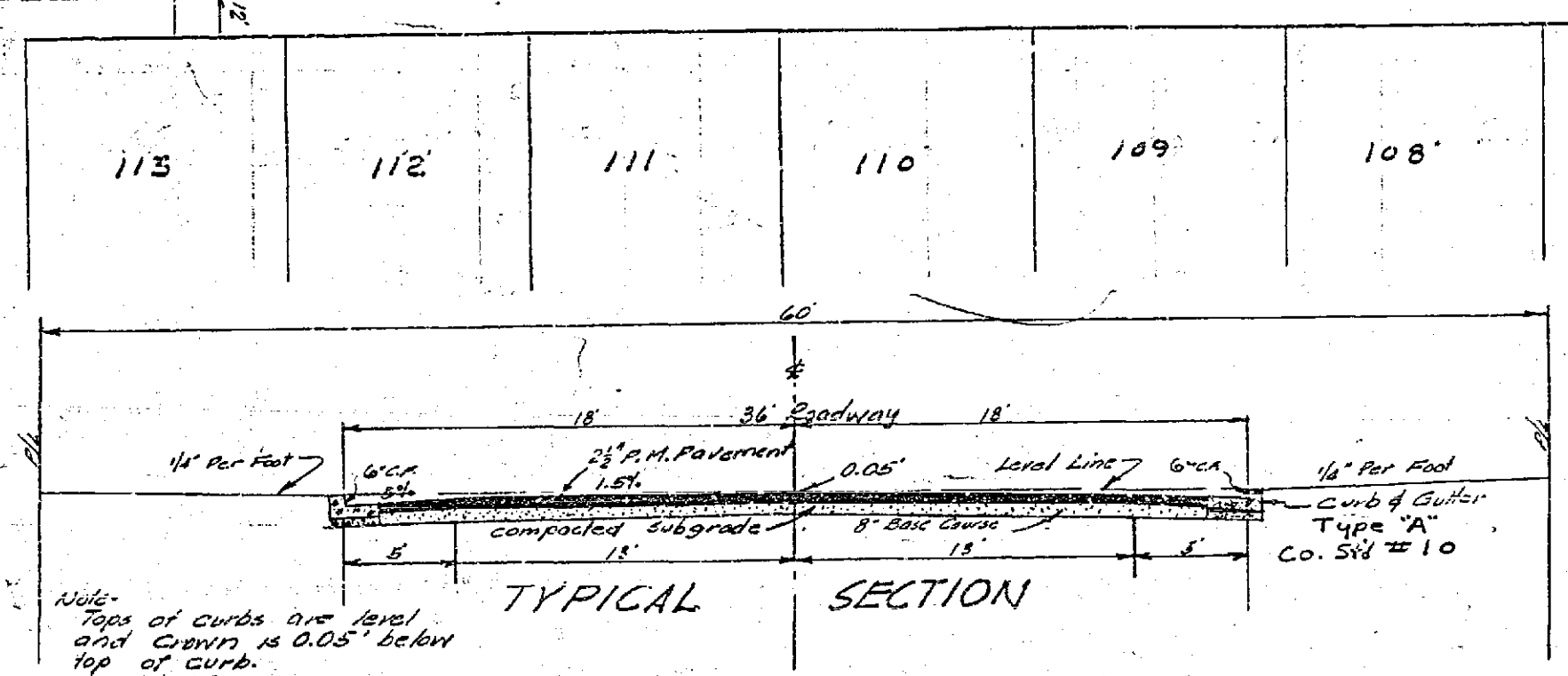
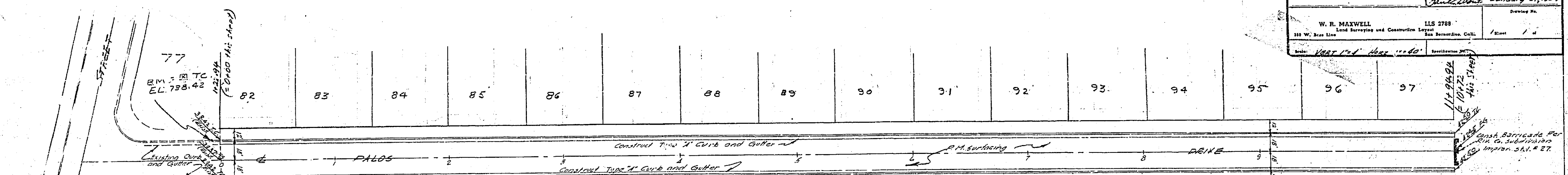


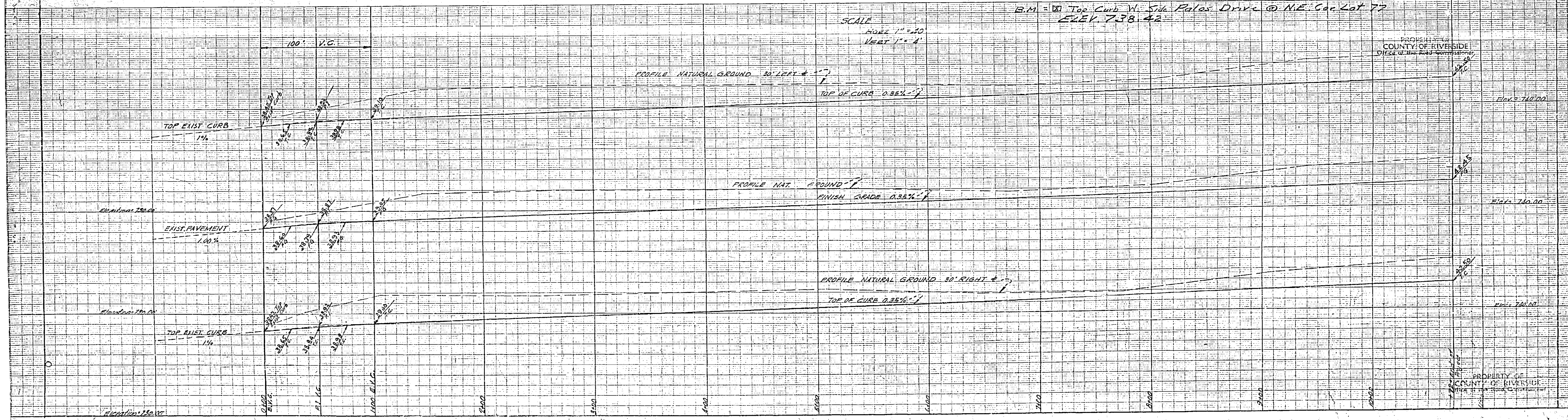
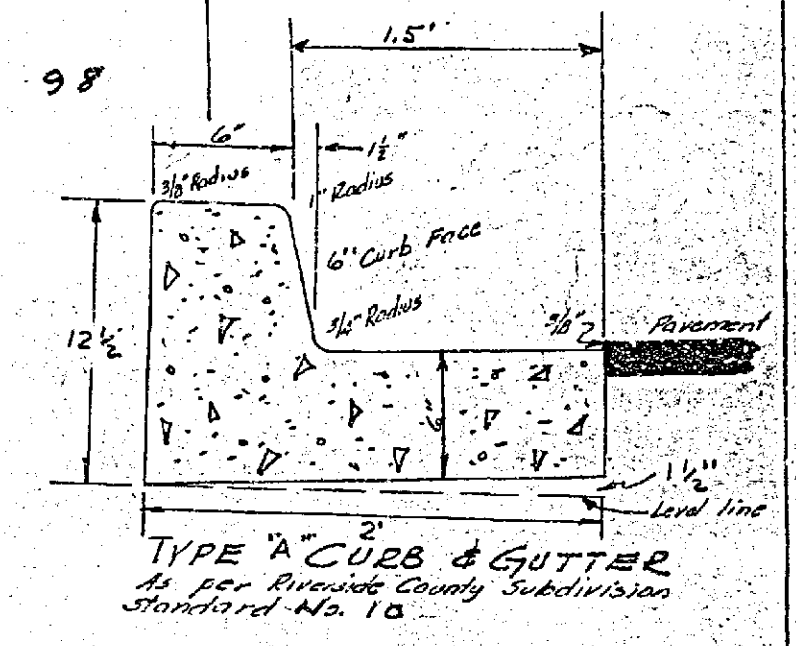
Approval of these plans by the Riverside County Land Commissioner does not release the Engineer of the responsibility for the Engineering design.

File No.	STREET PLAN PALOS DRIVE GREENACRE DOWNS NO. 6	
Drawn By	713	
Checked By		
Approval Recommended	Approved	Date January 21, 1959
W. R. MAXWELL 310 W. Main Street San Bernardino, Calif.		LLS 2788 Land Surveying and Conveyance License No. 10172
Scale	1/8" = 1'-0"	Sheet 1 of 1



PALOS DRIVE

NOTES
 All work shall conform with the specifications for improvement of subdivision streets of Riverside County dated 1956.
 Relocation of existing utilities to clear the work shall be the responsibility of the subdivider.
 Install street signs as per County Standard No. 28 as directed.



R-547 733-A

NEW YORK
 METZGER & ECKER
 ENGINEERS

NEW YORK
 METZGER & ECKER
 ENGINEERS

NEW YORK
 METZGER & ECKER
 ENGINEERS