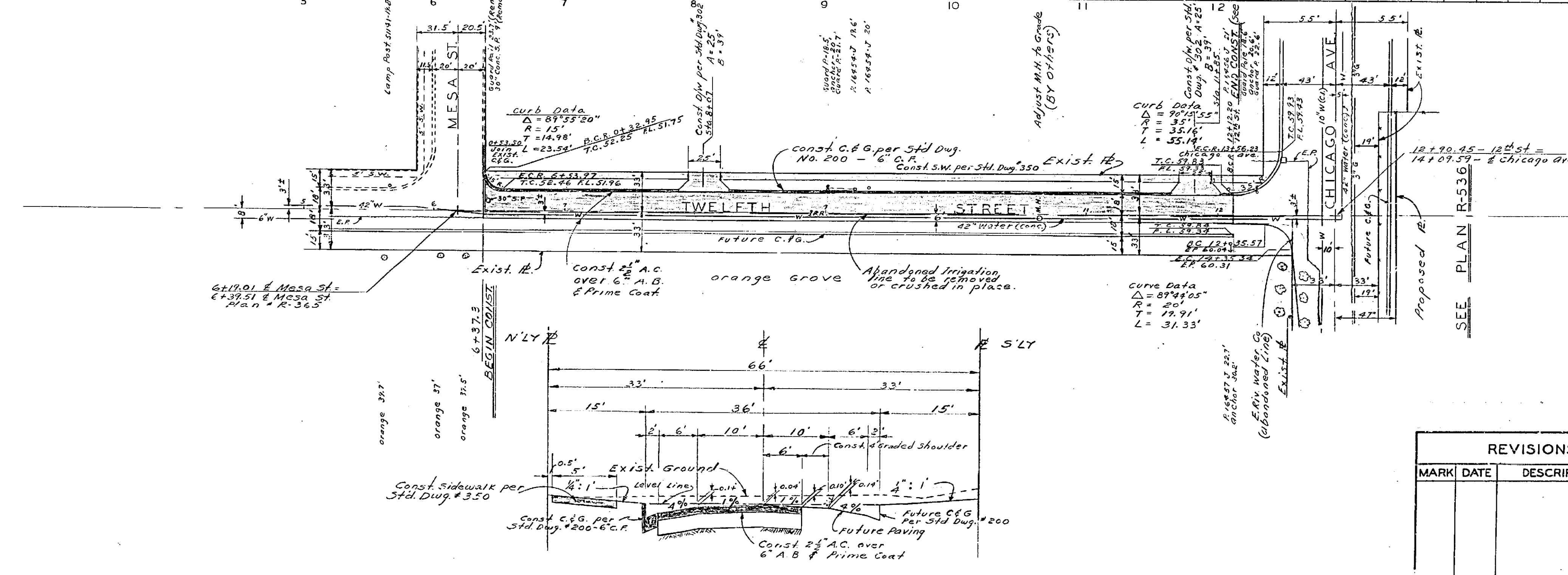


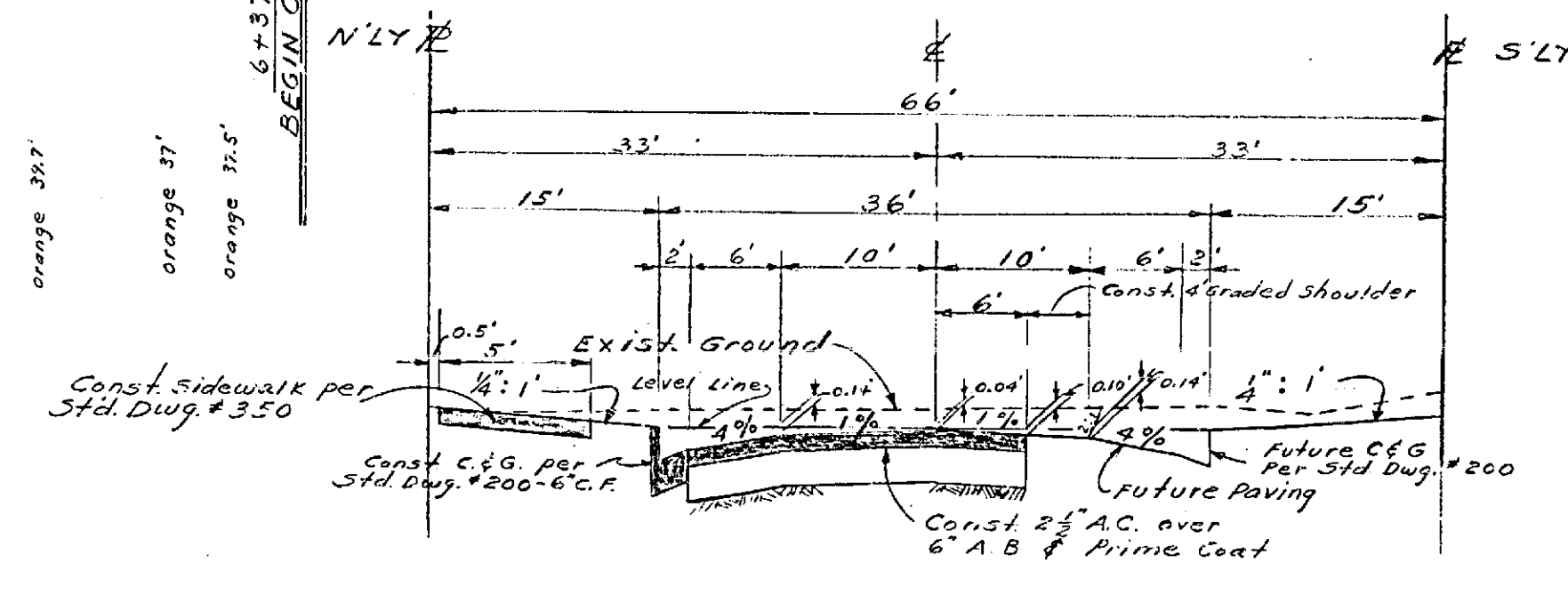
PROFILE	DATE
NO. 1000	
NO. 1001	
NO. 1002	
NO. 1003	
NO. 1004	
NO. 1005	
NO. 1006	
NO. 1007	
NO. 1008	
NO. 1009	
NO. 1010	

B.M. Nail in Conc. base of lamp post 20' Lt. 5' + 66.8' E 12th. back of N.W. CB. Ret. El. 931.36
 I.B. X-3/30-32, 64/127
 Scale: Hor. 1" = 50'
 Vert. 1" = 5'



SCALE N 1" = 50'

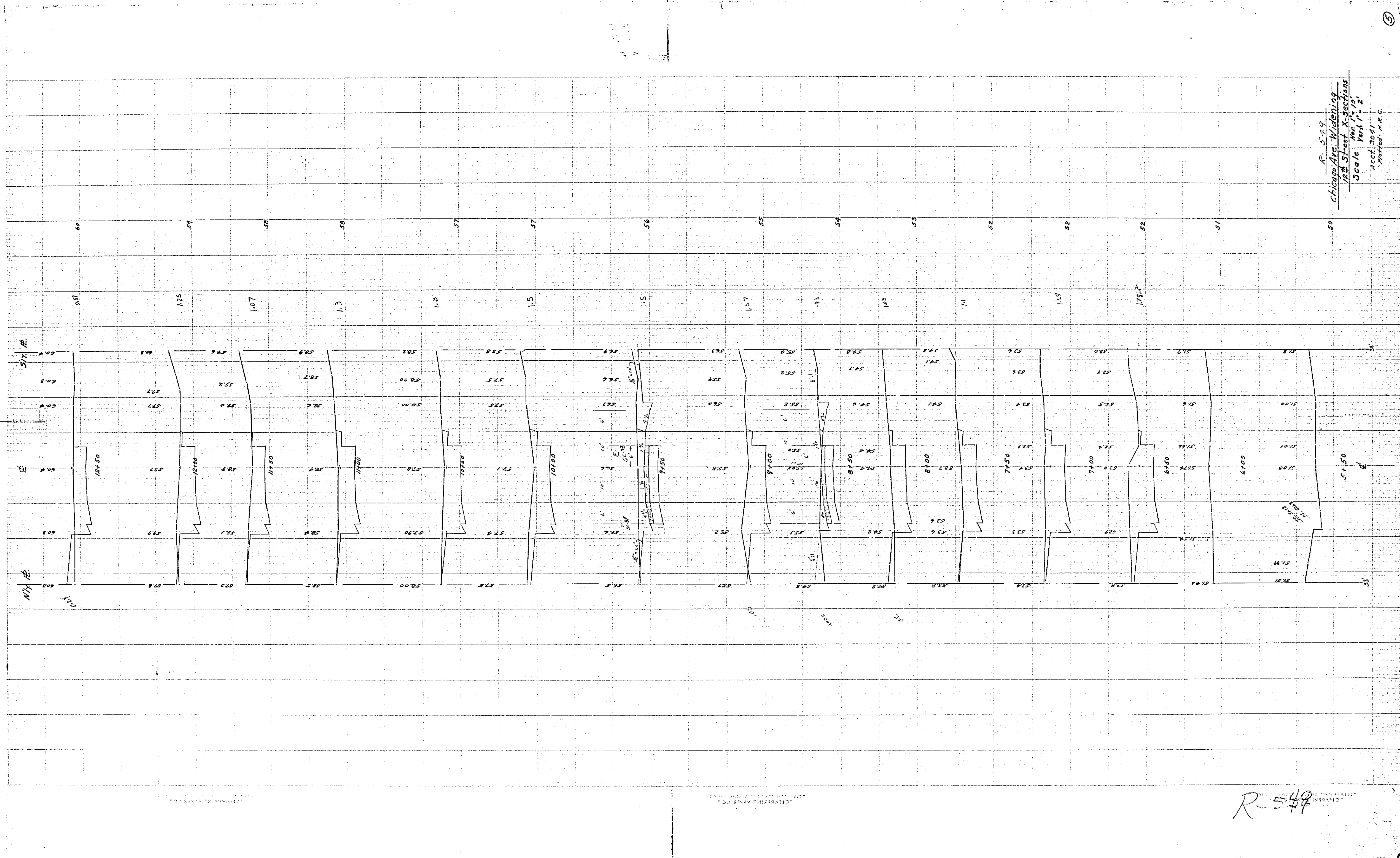
PLAN	DATE
NO. 1000	
NO. 1001	
NO. 1002	
NO. 1003	
NO. 1004	
NO. 1005	
NO. 1006	
NO. 1007	
NO. 1008	
NO. 1009	
NO. 1010	



TYPICAL SECTION
 HOR. 1" = 10'
 VERT. 1" = 2'

REVISIONS		CITY OF RIVERSIDE, CALIFORNIA DEPARTMENT OF PUBLIC WORKS	
MARK	DATE	DESCRIPTION	

DESIGNED BY C.M.I.	SUBMITTED BY William D. Hurd	APPROVED BY [Signature]	PROJ. NO. 3014
DRAWN BY H.R.C.	PARK DEPT. TRAFFIC DIV. A.B.D.		R-549
CHECKED BY	RECOMMENDED BY	DATE 10-15-62	SHEET 1 OF 1



R-549
 Chicago Ave. Widening
 12th Street X-Section
 Scale 1" = 10'
 1904

R-549