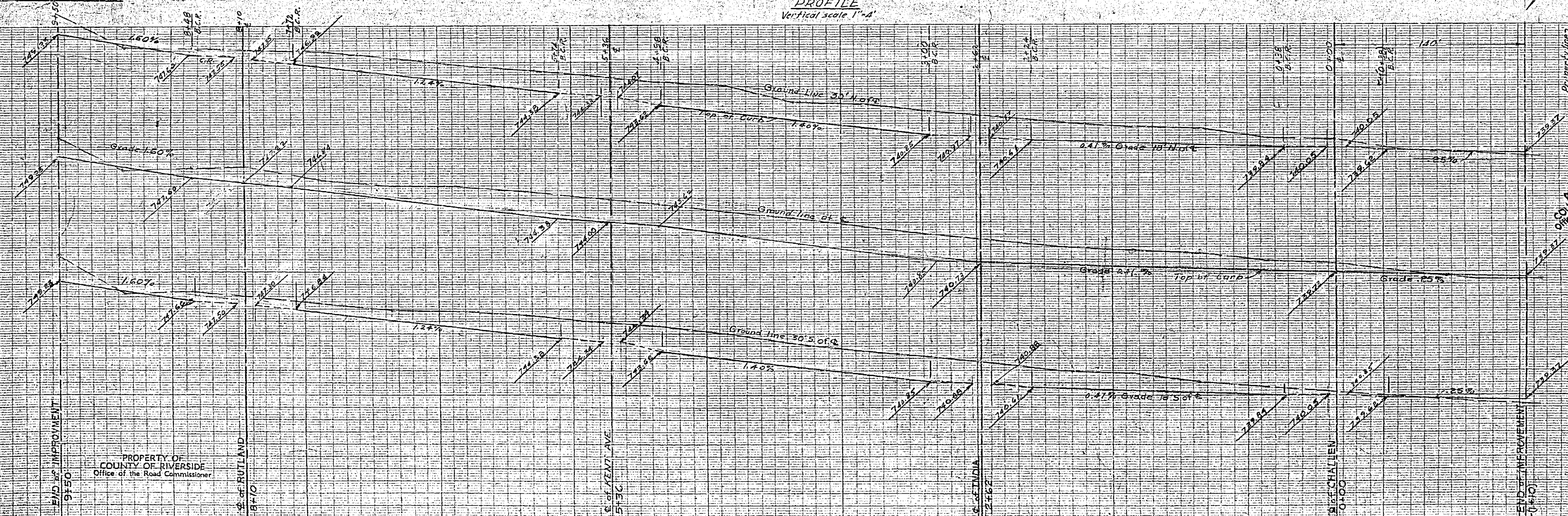
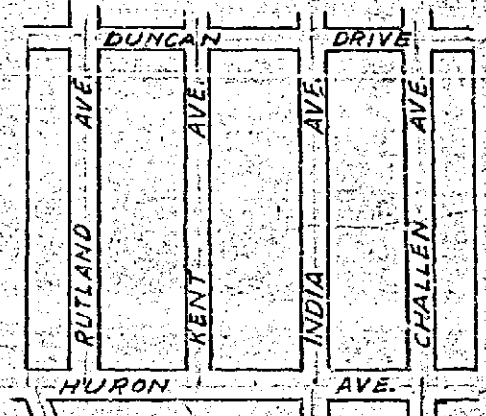


PLAN
Scale 1"=40'

PROFILE
Vertical scale 1"=4'



Approved August 29, 1952
A.C. Kiehl, Co. Surveyor
by G.T. [Signature]



PROPERTY OF
COUNTY OF RIVERSIDE
Office of the Road Commissioner

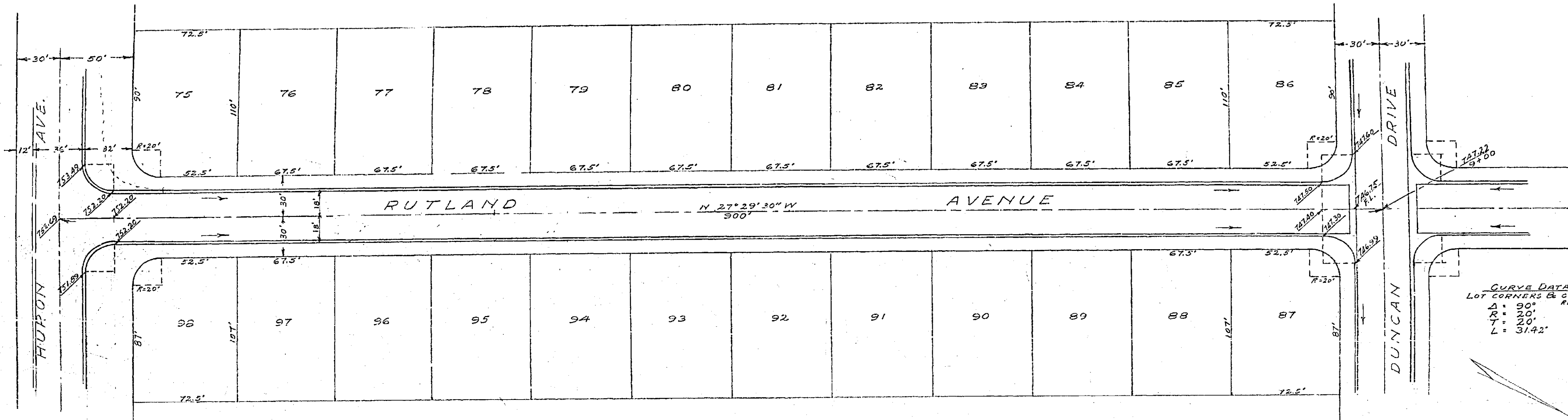
SIERRA FOOTHILL TRACT NO. 2
STREET GRADES
DUNCAN DRIVE
ALBERTA WEBB ASSOCIATES
CIVIL ENGINEERS RIVERSIDE, CALIF.

DATE: 1 AUGUST 1952 SCALE: 1"=40' FILE NO.: 5A-26A

PROPERTY OF
COUNTY OF RIVERSIDE
Office of the Road Commissioner

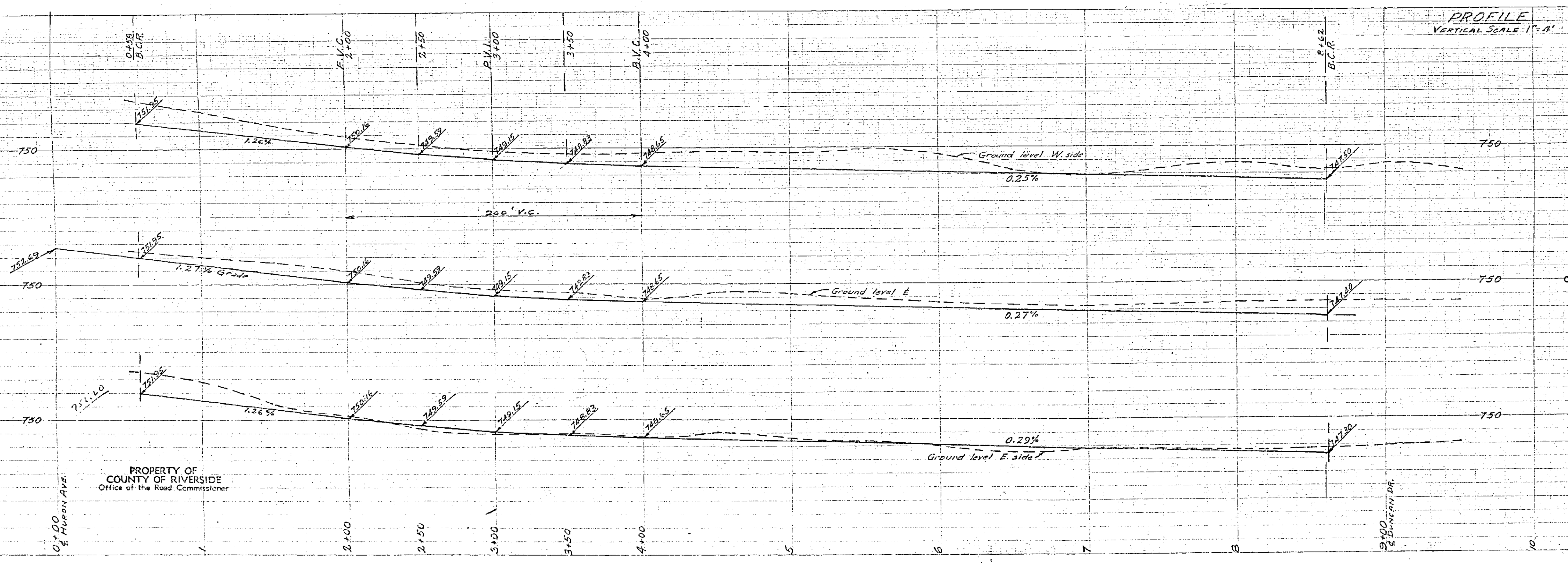
CHARLES BRUNING COMPANY
PLAN PROFILE PLATE A

R-556 713-55A



CURVE DATA
 LOT CORNERS & CURB RETURNS
 Δ = 90°
 R = 100'
 T = 20'
 L = 31.42'

PLAN
 SCALE 1"=40'



PROPERTY OF
 COUNTY OF RIVERSIDE
 Office of the Road Commissioner

Approved August 29, 1952
 A. C. Rieth, Co. Surveyor
 by *G. T. Womack*

SIERRA-FOOTHILL TRACT NO 2		
STREET GRADES		
RUTLAND AVENUE		
ALBERT A. WEBB ASSOCIATES		
CIVIL ENGINEERS - RIVERSIDE, CALIF.		
DATE	SCALE	FILE NO
AUGUST 1952	1"=40'	5A-264

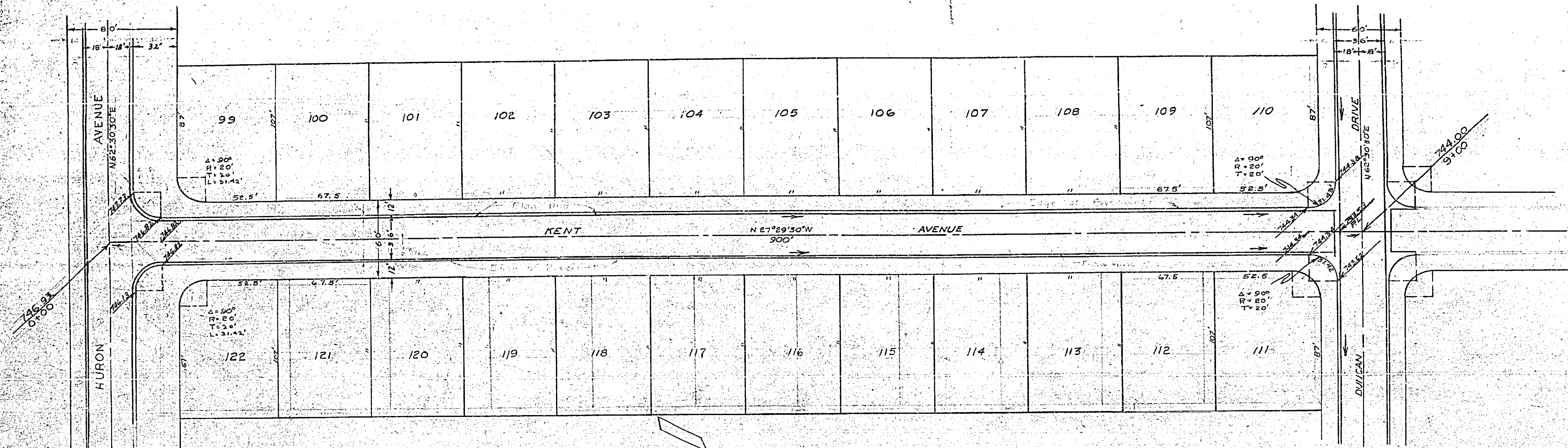
R-556 713-6

PRINTED IN U.S.A.
 CHICAGO PAPER PRODUCTS, MADE IN U.S.A.

ENGINEER
 FUTURE DIVISION CO.

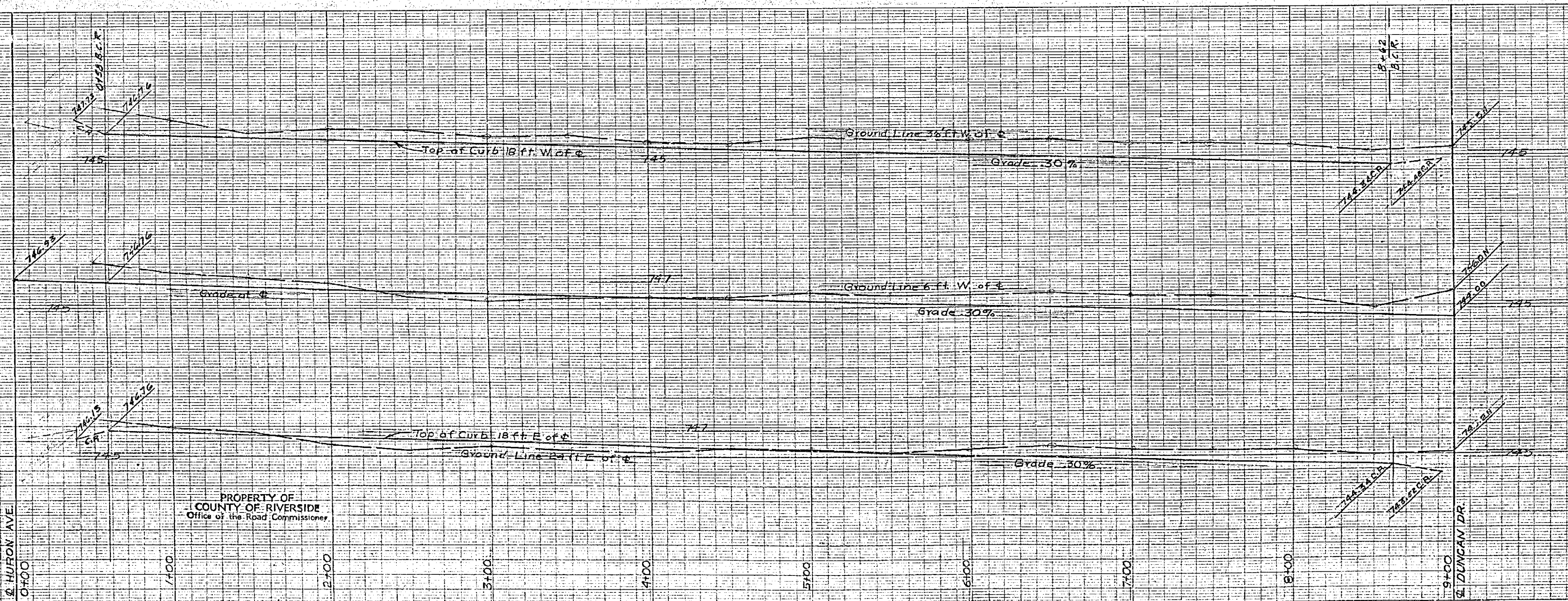
REGISTERED CIVIL ENGINEER
 NO. 10041 - STATE OF CALIF.

REGISTERED CIVIL ENGINEER
 JUDITH DIETZGEN CO.



PLAN
Scale 1"=40'

PROFILE
Vertical Scale 1"=4'



Approved August 29 1952
A.C. Keith, Co. Surveyor
by: [Signature]

PROPERTY OF
COUNTY OF RIVERSIDE
Office of the Road Commissioner

Note: For B.M. see sheet
of India Avenue, set 2011
for cross section of street

SIERRA FOOTHILL TRACT NO. 2

STREET GRADES

KENT AVENUE

ALBERT A. WEBB ASSOCIATES

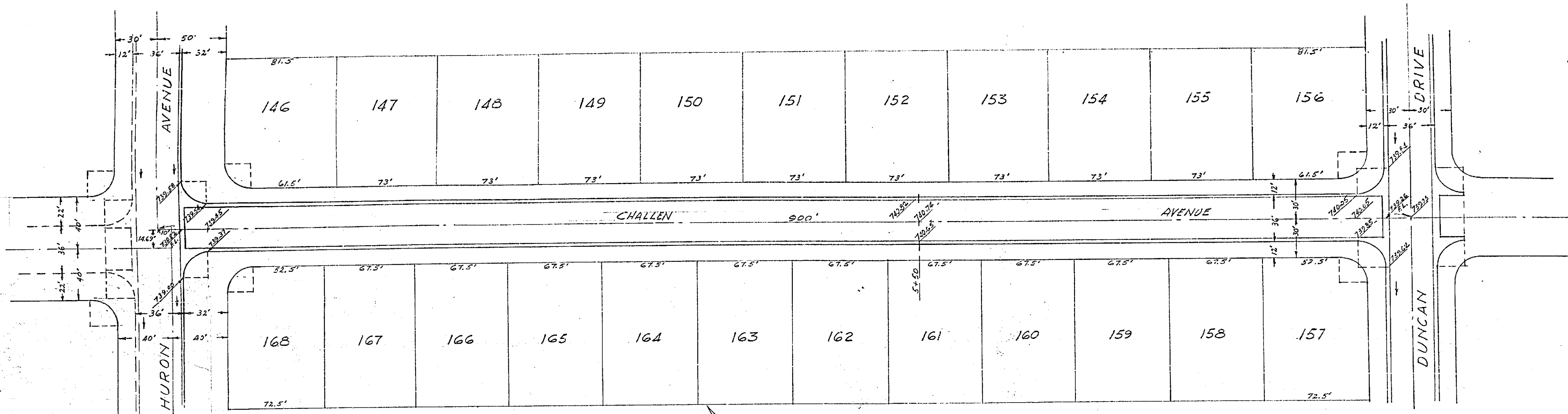
CIVIL ENGINEERS RIVERSIDE, CALIF.

DATE	SCALE	FILE NO.
AUGUST 1952	1"=40'	5A-26A

CHARLES BRUNING COMPANY
PLAN PROFILE PLATE A
PRINTED IN U.S.A.

CHARLES BRUNING COMPANY
PLAN PROFILE PLATE A
PRINTED IN U.S.A.

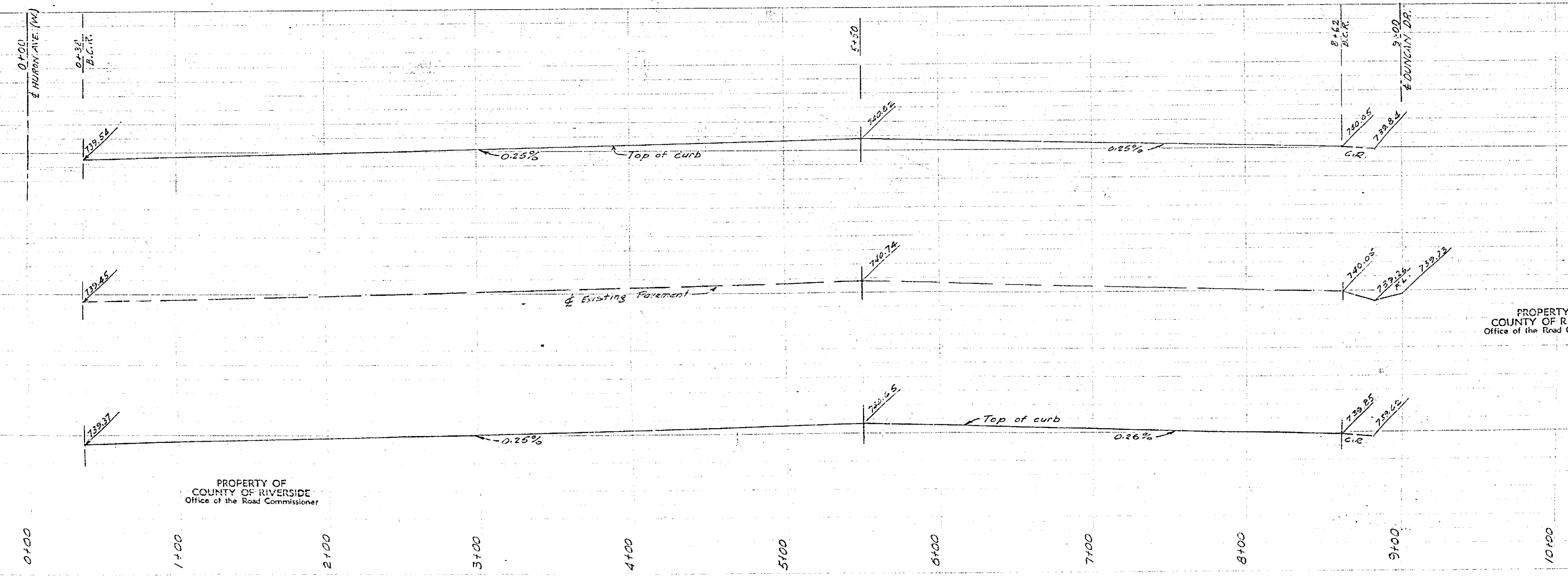
R-556 713-G



PLAN
Scale 1"=40'

PROFILE
Vertical scale 1"=4'

CURVE DATA
ALL LOT CORNERS & CURB RETURNS
AT INTERSECTIONS
R = 20'
Δ = 20°
T = 20'
L = 31.42'



PROPERTY OF
COUNTY OF RIVERSIDE
Office of the Road Commissioner

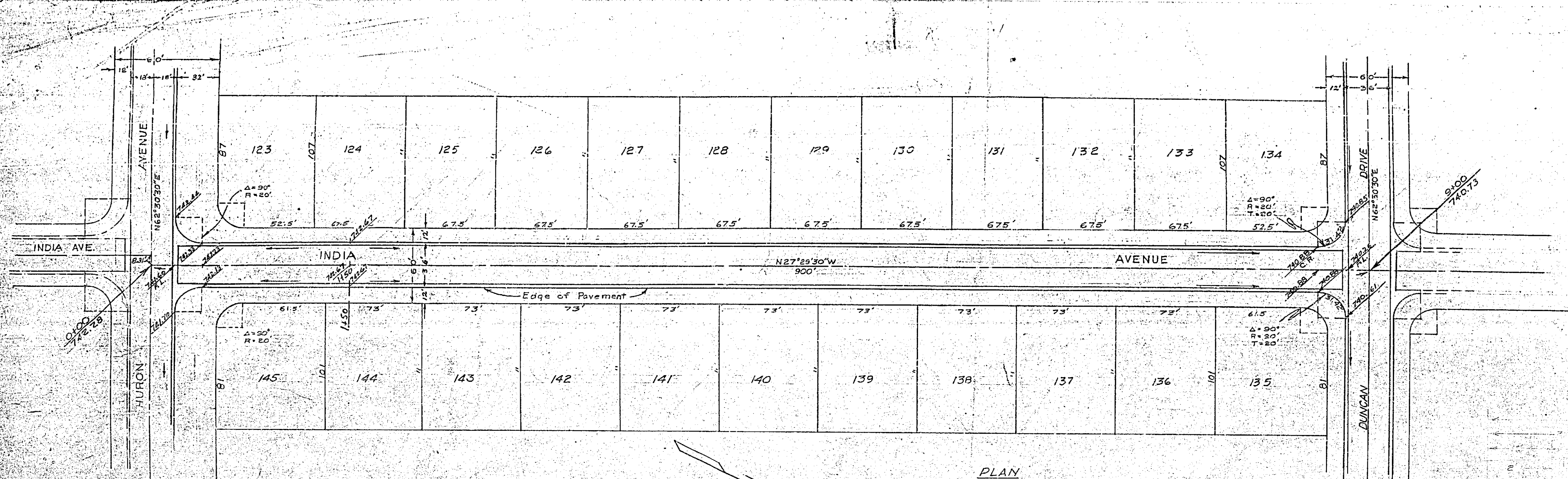
Approved August 29, 1952
A.C. Kieft, Co. Surveyor
by G.T. Wilson, C.E.

PROPERTY OF
COUNTY OF RIVERSIDE
Office of the Road Commissioner

SIERRA FOOTHILL TRACT NO. 2		
STREET GRADES CHALLEN AVE		
ALBERT A. WEBB ASSOCIATES CIVIL ENGINEERS		
DATE AUGUST 1952	SCALE 1" = 40'	FILE NO. 5A-264

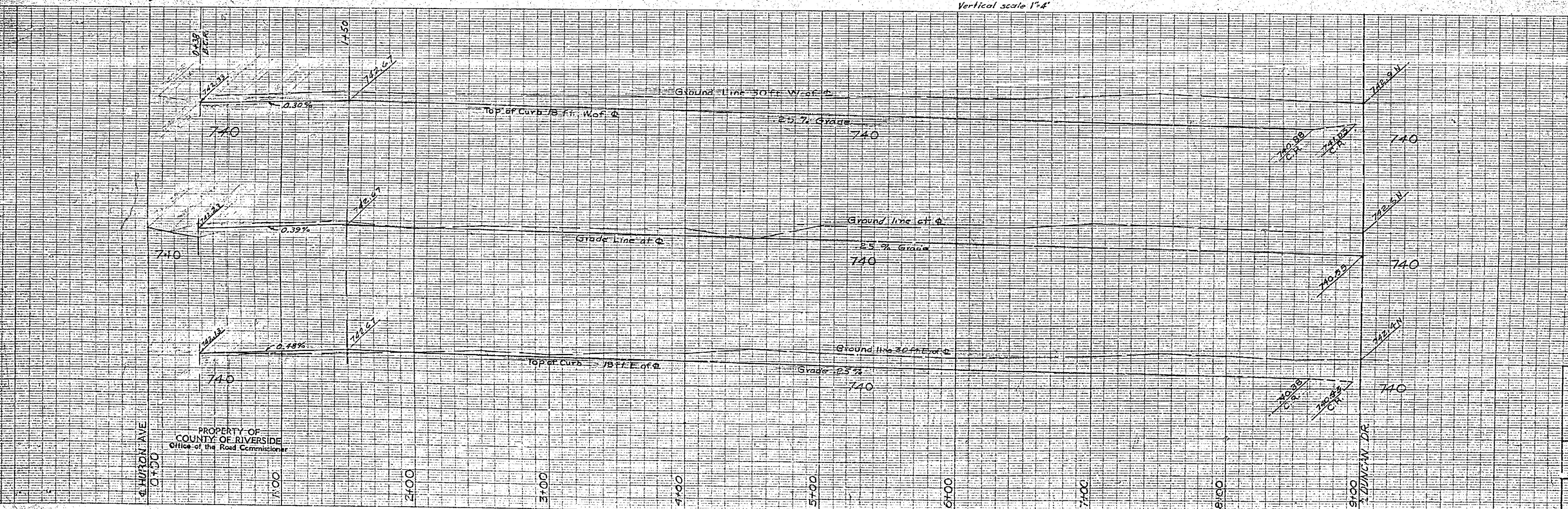
713-G

R-556



PLAN
Scale 1"=40'

PROFILE
Vertical scale 1"=4'



PROPERTY OF
COUNTY OF RIVERSIDE
Office of the Road Commissioner

Approved August 20, 1952
A. L. Keith, City Engineer
by: E. H. W. [Signature]

8.16 Mile Pin, of main line 2.5% North and 2.5% West
at the intersection of Center with Huron.
Elevation 742.97

SIERRA FOOTHILL TRACT NO. 2
STREET GRADES
INDIA AVENUE

ALBERT A. WEBB ASSOCIATES
CIVIL ENGINEERS RIVERSIDE, CALIF.

DATE: 12-4-51 SCALE: 1"=40' FILE NO.: 51-264

CHARLES BRUNING COMPANY
PLAN PROFILE PLATE A

CHARLES BRUNING COMPANY
PLAN PROFILE PLATE A

R-556 713-G