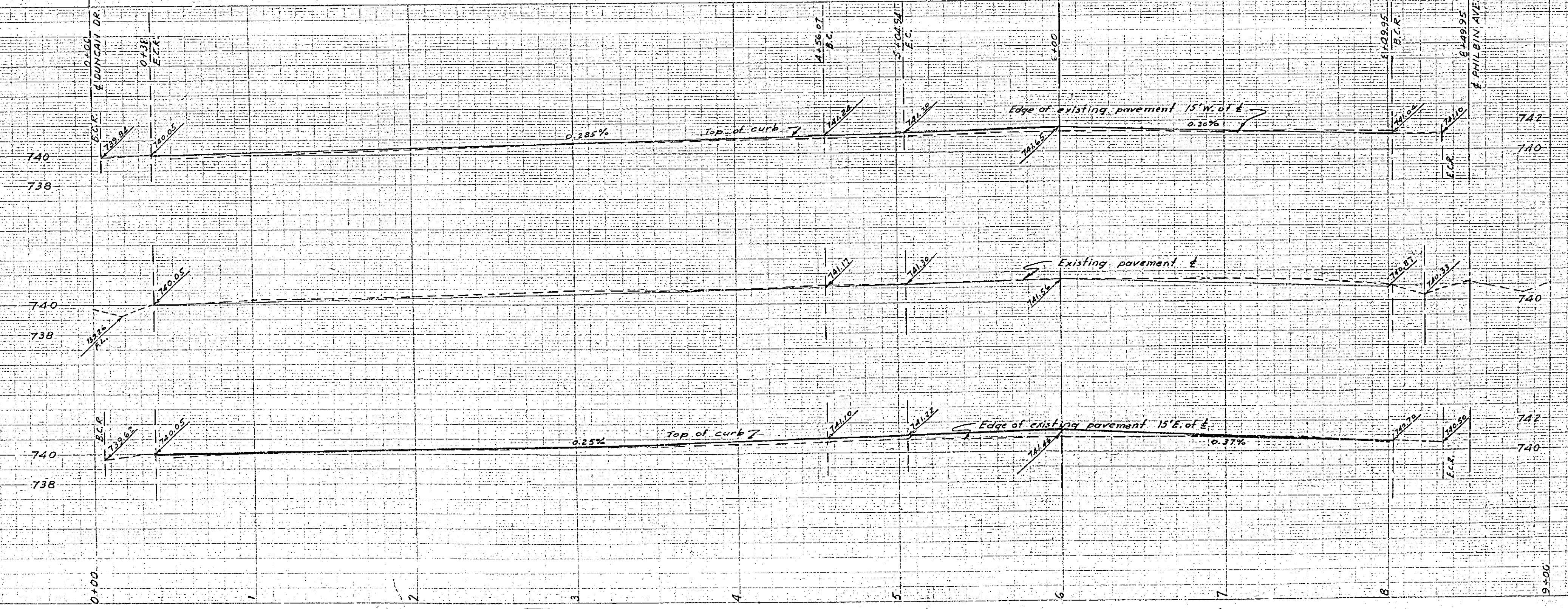


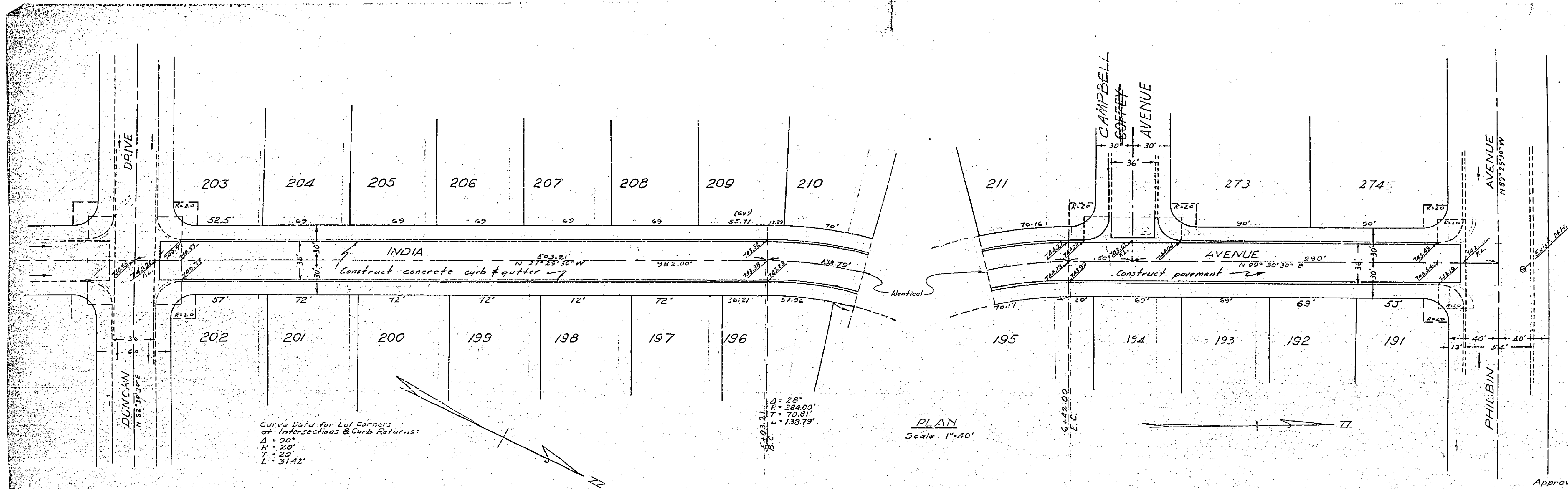
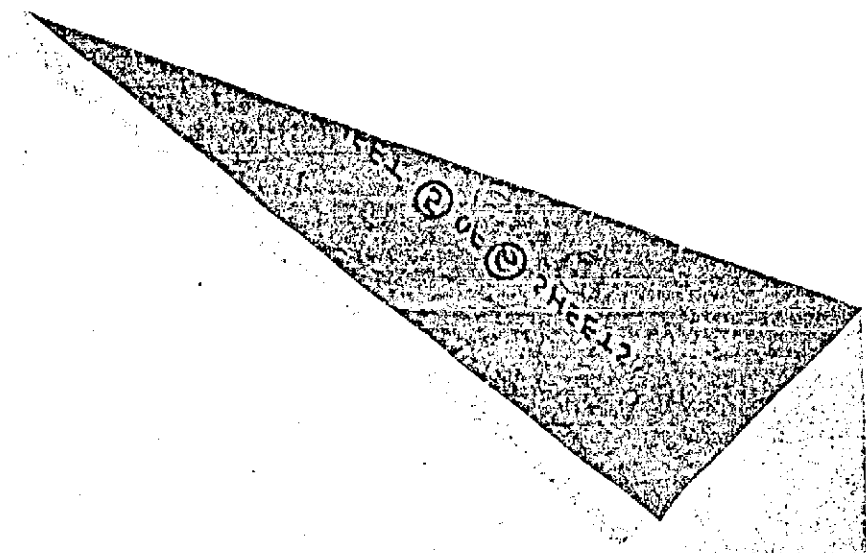
Approved this 30 day of January 1958
 A.C. Keith, County Surveyor
 By G.T. Worley Deputy



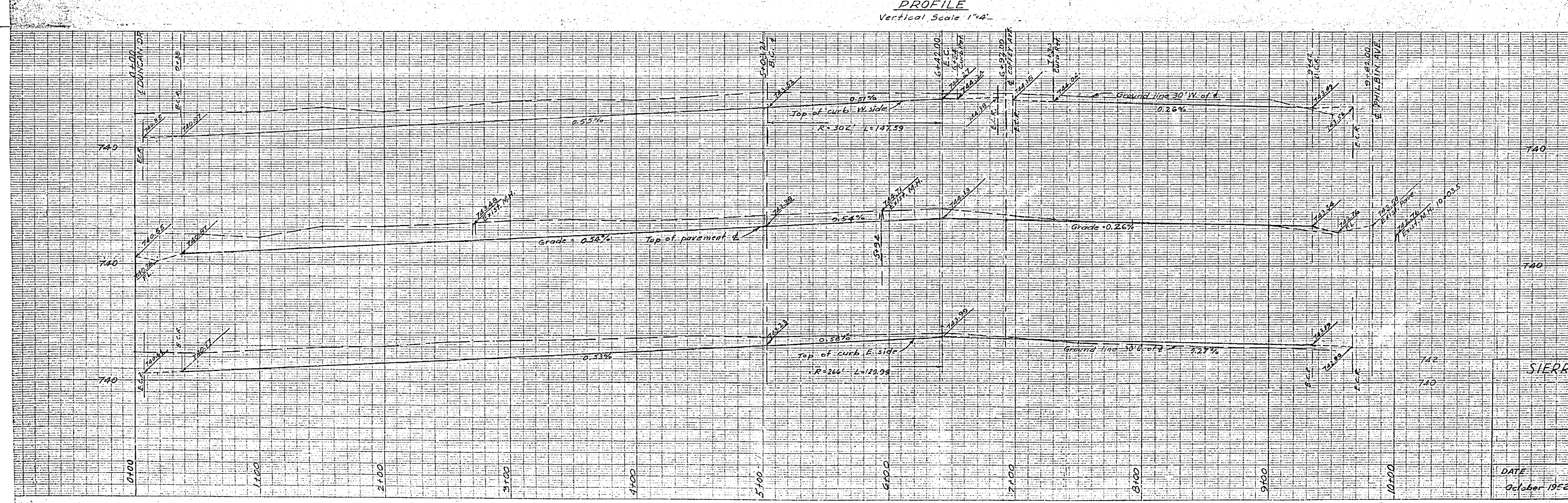
PROPERTY OF
 COUNTY OF RIVERSIDE
 Office of the Road Commissioner

SIERRA FOOTHILL TRACT No 3		
STREET GRADES		
CHALLEN AVENUE		
ALBERT A. WEBB ASSOCIATES CIVIL ENGINEERS		
DATE	SCALE	FILE NO.
October 1952	1"=40'	5A-259 Pg 1.5

R-557-713-7



Approved this 30 day of January 1953
 A. C. Keith, County Surveyor
 By W. T. Wenzel, Deputy



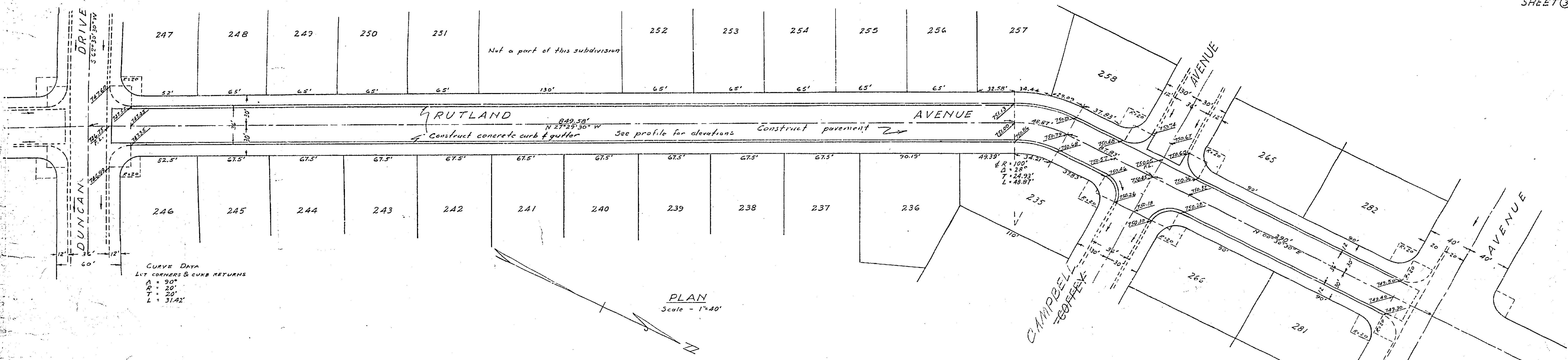
PROPERTY OF
 COUNTY OF RIVERSIDE
 Office of the Road Commission

SIERRA FOOTHILL TRACT NO. 3			
STREET GRADES			
INDIA AVENUE			
ALBERT A. WEBB ASSOCIATES			
CIVIL ENGINEERS			
DATE	SCALE	FILE NO.	FILE NO.
October 1952	1"=40'	5A-259	

ING COMPANY
 E PLATE A

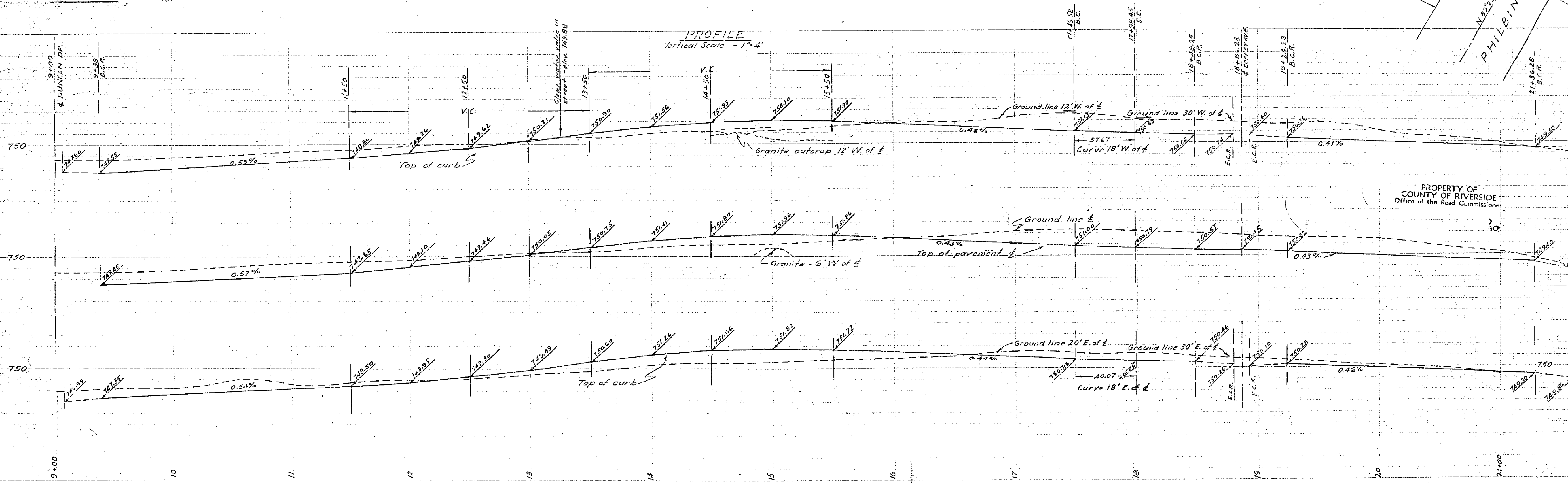
CHARLES BRUNING COMPANY
 PLAN PROFILE PLATE A

R-557 713-Z



CURVE DATA
LIT CORNERS & CURB RETURNS
A = 90°
R = 20'
T = 20'
L = 31.42'

PROFILE
Vertical Scale - 1"=4'



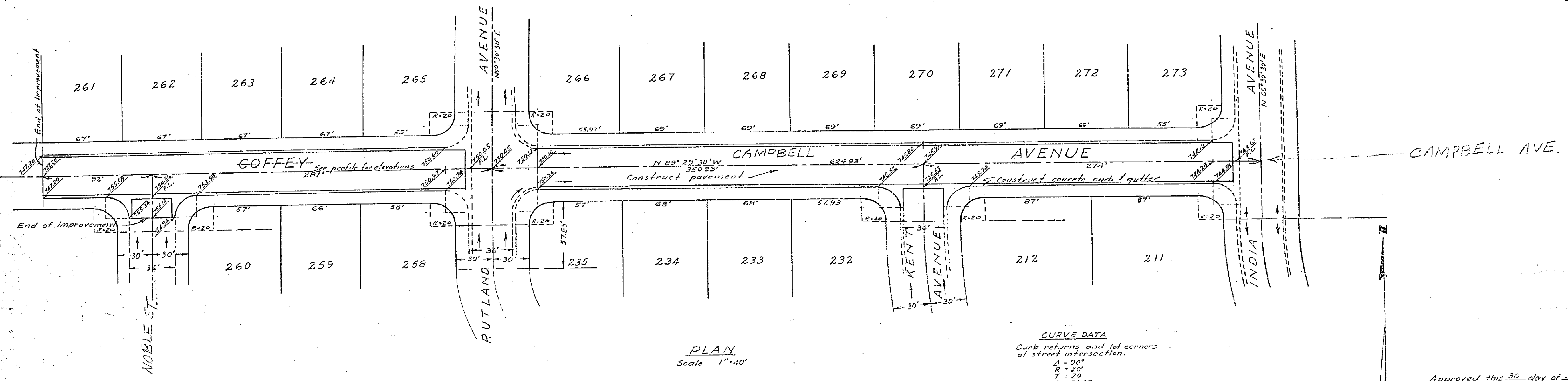
PROPERTY OF
COUNTY OF RIVERSIDE
Office of the Road Commissioner

Approved this 30 day of January 1953
A.C. Keith, County Surveyor
By *[Signature]* Deputy

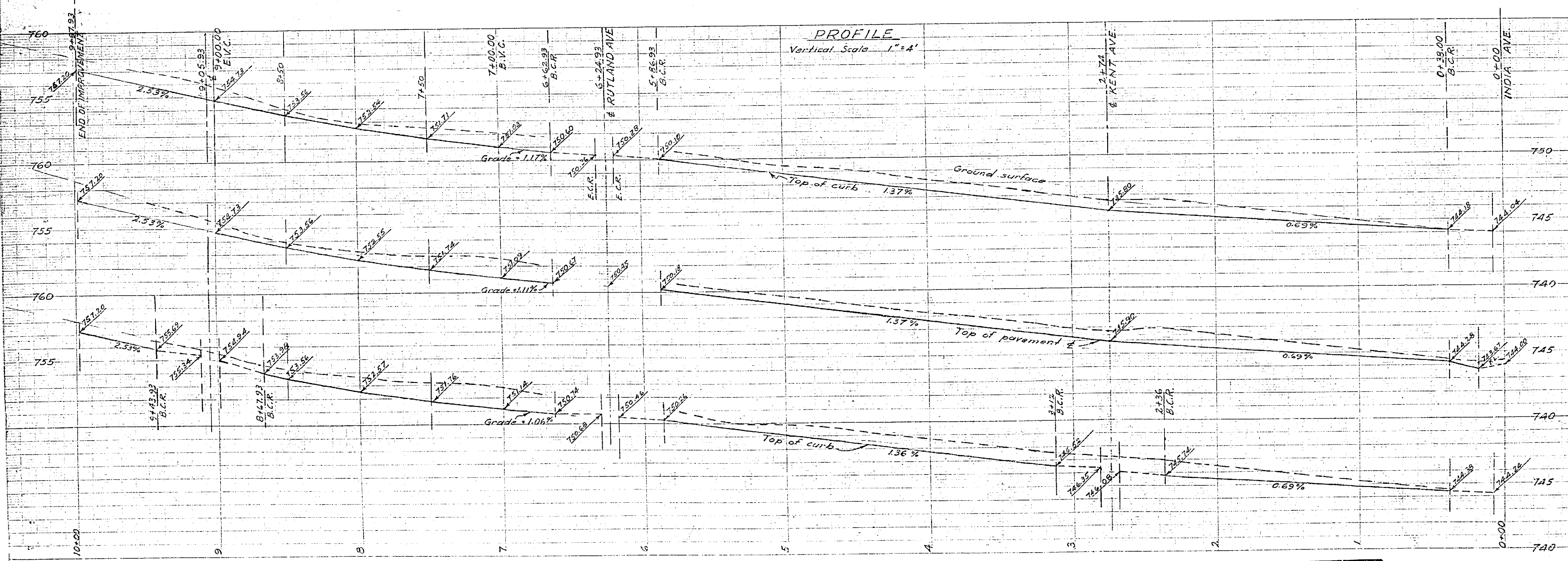
SIERRA FOOTHILL TRACT NO. 3		
STREET GRADES		
RUTLAND AVENUE		
ALBERT A. WEBB ASSOCIATES CIVIL ENGINEERS		
DATE October 1952	SCALE 1" = 40'	FILE NO. SA-259 FB 511 FB 112

R-557 7/13

2HEEL



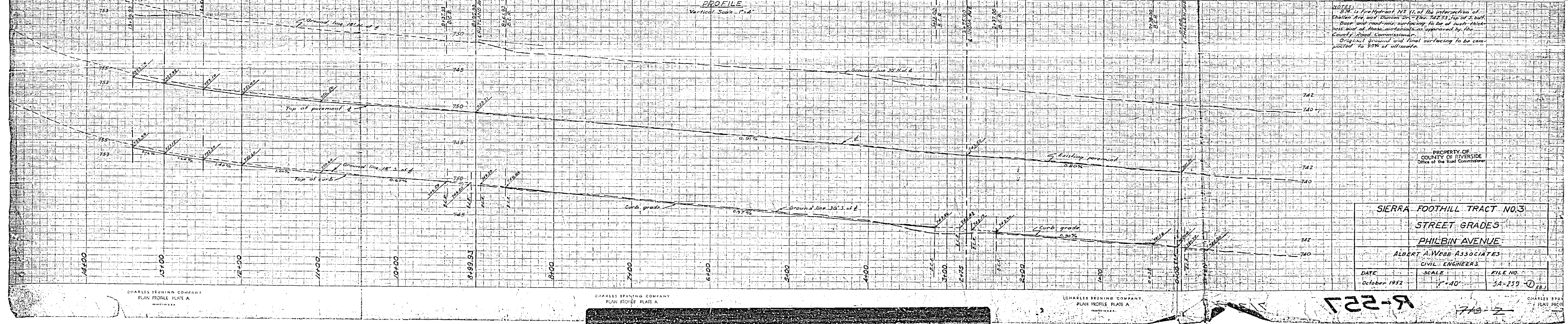
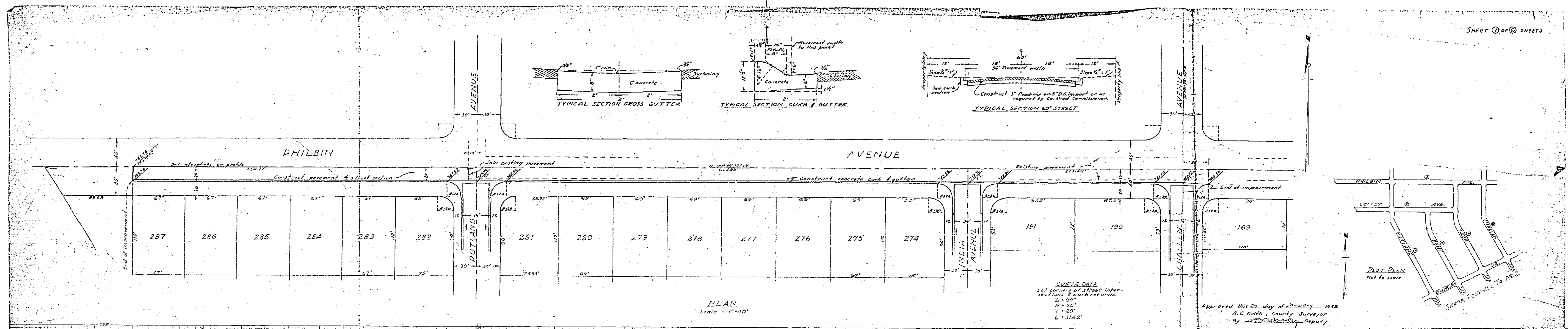
Approved this 30 day of January 1953
 A.C. Keith County Surveyor
 By T. W. ... Deputy



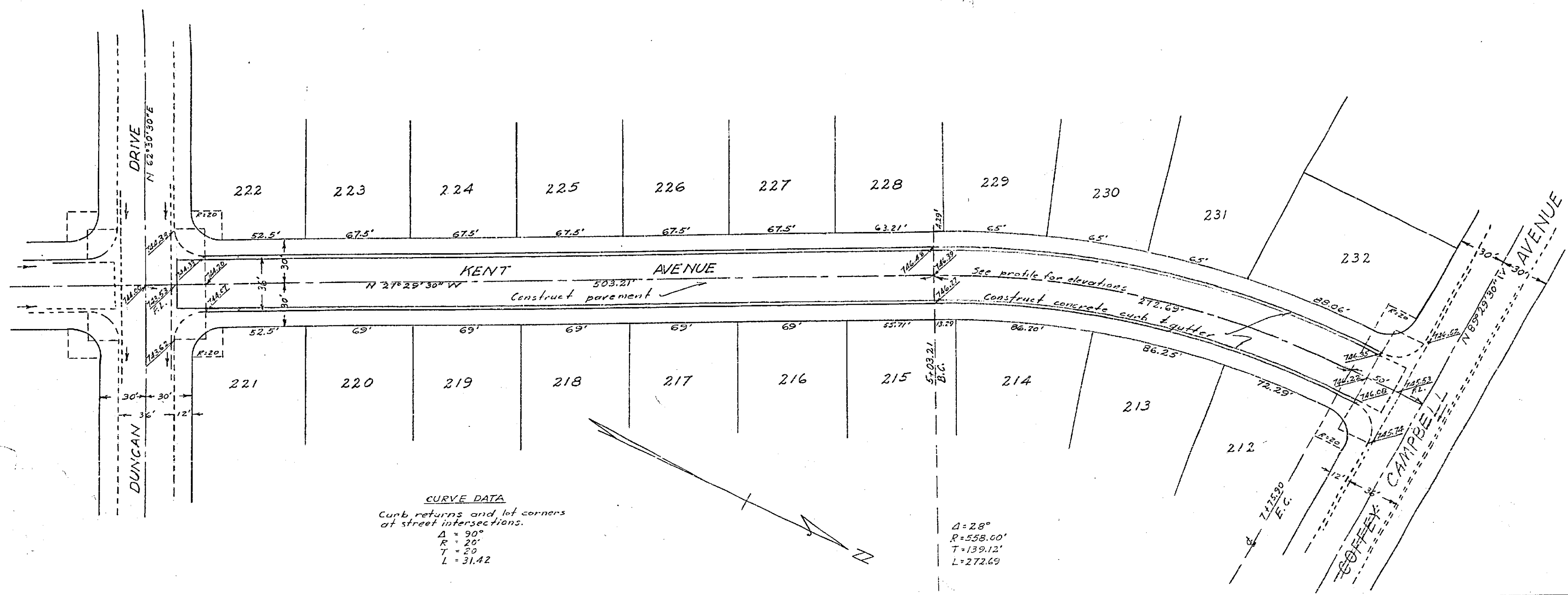
PROPERTY OF
 COUNTY OF RIVERSIDE
 Office of the Road Commissioner

SIERRA FOOTHILL TRACT No. 3		
STREET GRADES		
COFFEY AVENUE		
ALBERT A. WEBB ASSOCIATES		
CIVIL ENGINEERS		
DATE	SCALE	FILE NO.
October 1952	1"=40'	SA-259-2

R-557



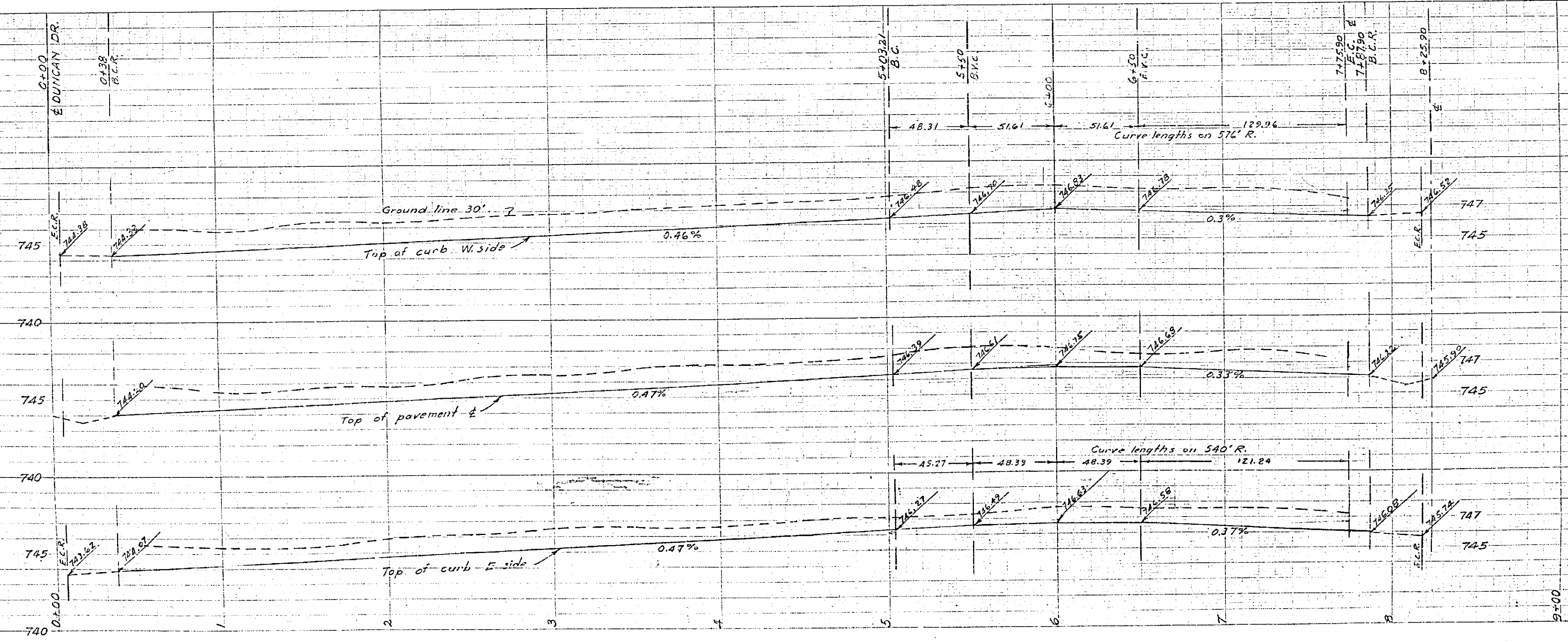
R-251 745-2



CURVE DATA
 Curb returns and lot corners
 at street intersections.
 A = 90°
 R = 20'
 T = 20'
 L = 31.42'

A = 28°
 R = 558.00'
 T = 139.12'
 L = 272.69'

Approved this 30 day of January 1952
 A.C. Keith, County Surveyor
 By _____, Deputy



PROPERTY OF
 COUNTY OF RIVERSIDE
 Office of the Road Commissioner

SIERRA FOOTHILL TRACT NO 3		
STREET GRADES		
KENT AVENUE		
ALBERT A. WEBB - ASSOCIATES CIVIL ENGINEERS		
DATE October 1952	SCALE 1" = 40'	FILE NO. 5A-259

R-557 713-7