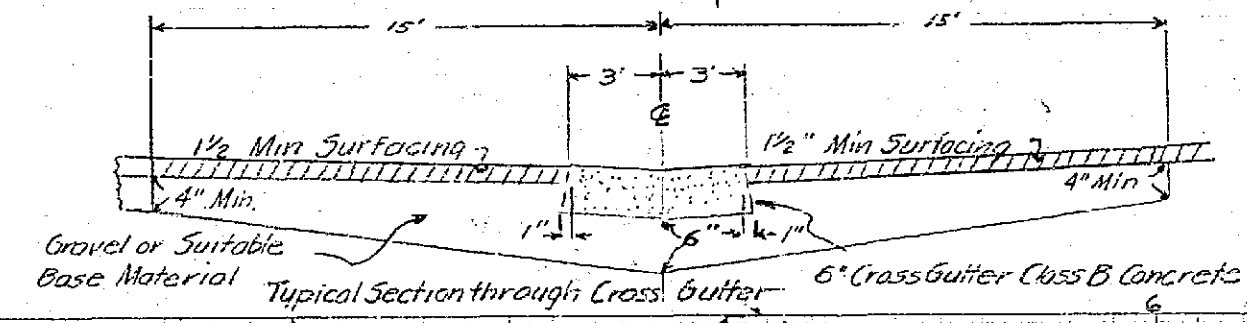
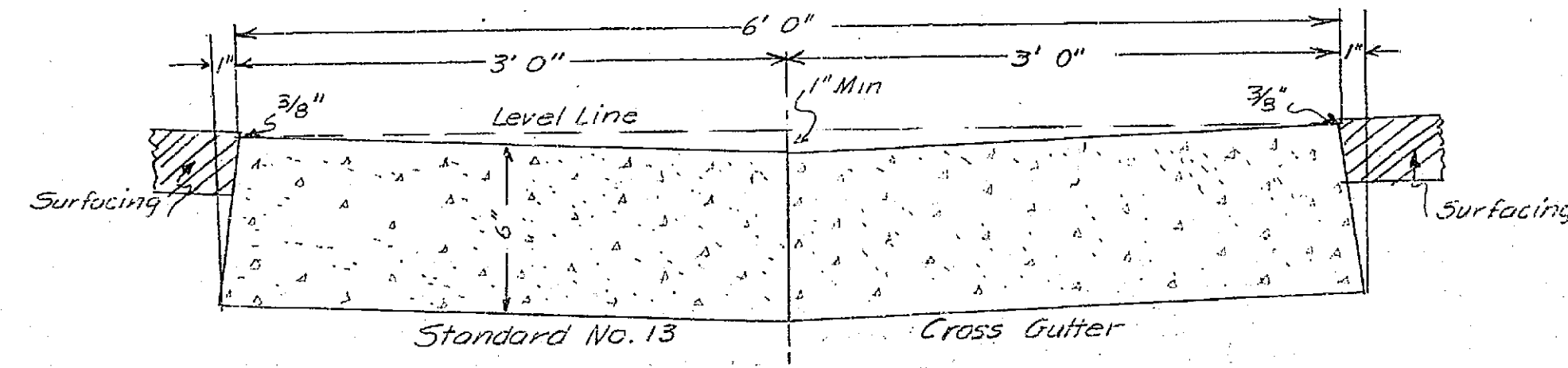
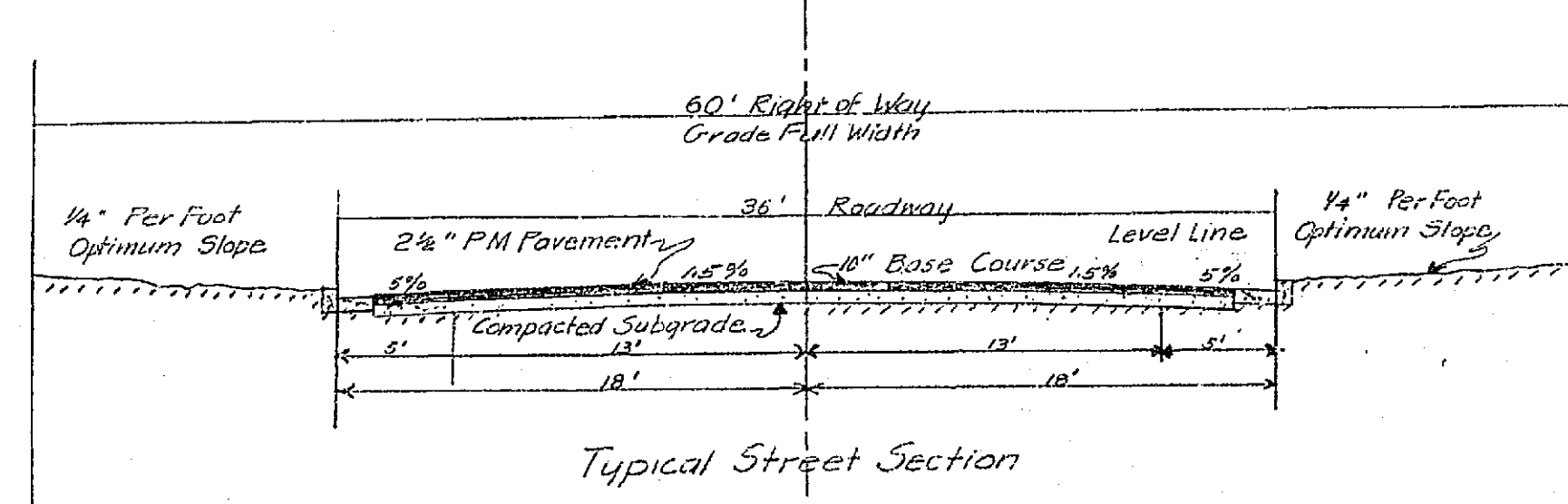


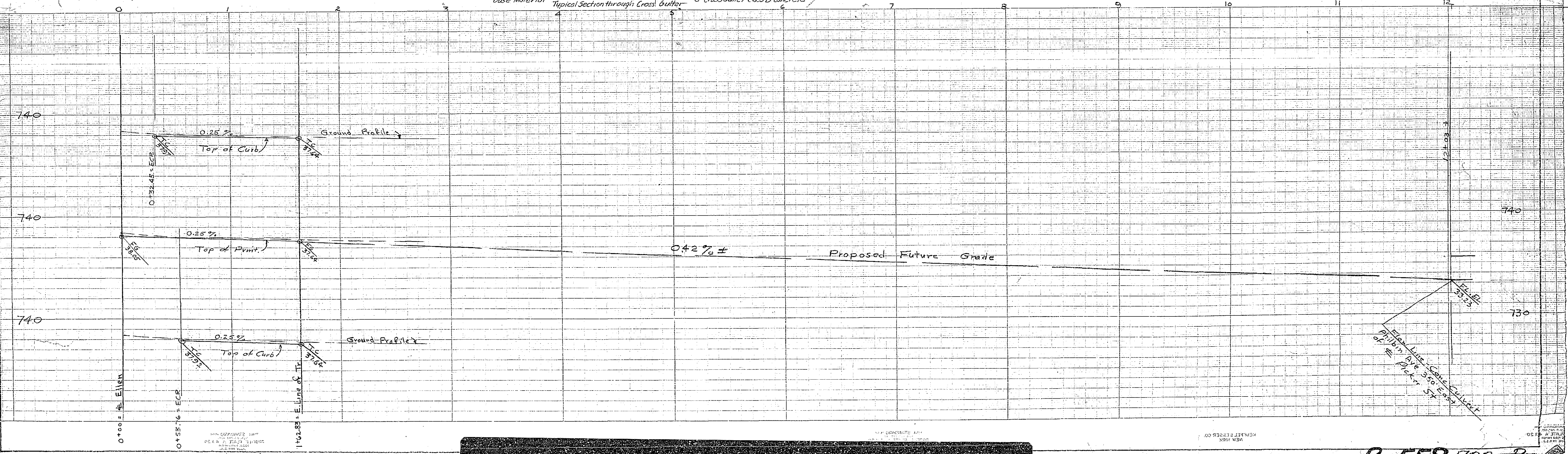
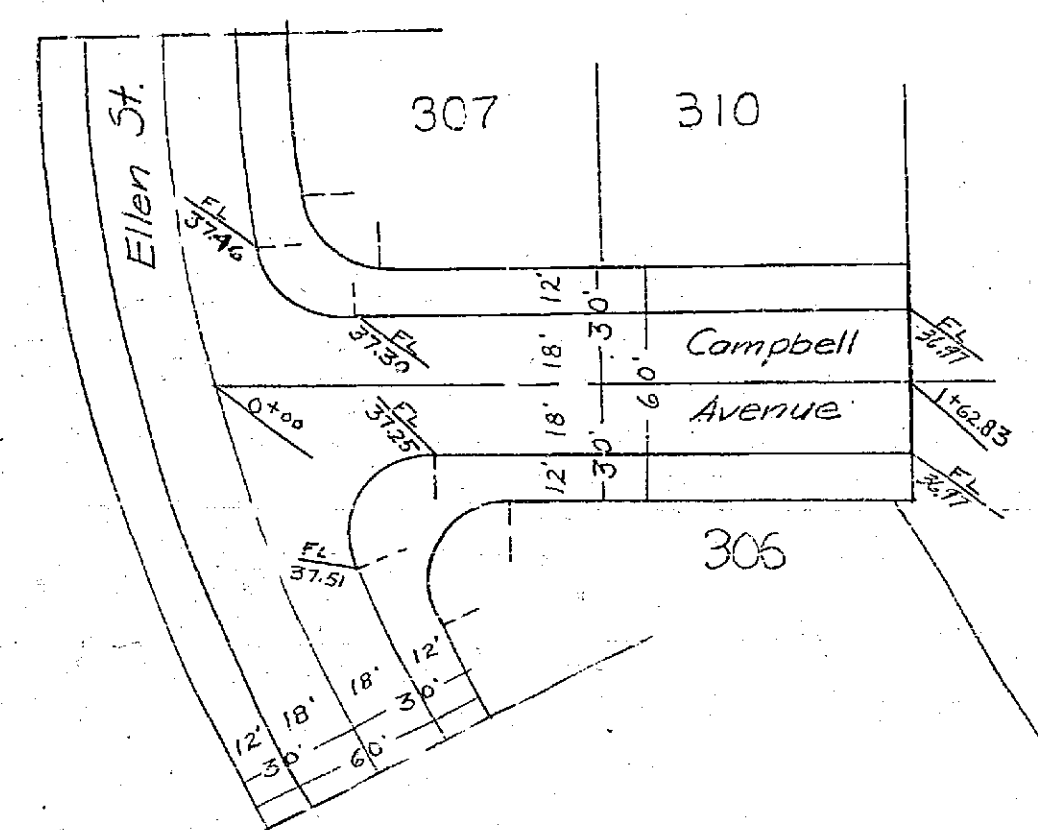
Campbell Avenue

Job No. FB 29	SIERRA FOOTHILLS NO. 4	
Drawn By	Checked By	Approval Recommended:
Approved:	Date:	Drawing No.
W. R. MAXWELL Land Surveying and Construction Layout 330 W. Base Line San Bernardino, Calif.		LLS 2788 San Bernardino, Calif. Sheet 3 of 3
Scale: Hor. 1"=40' Vert. 1"=4'	Qualification No.:	

Approved By B. D. Russell 9-1-57
For Road Commissioner - Riverside County



Curb Return Data Unless Otherwise Shown:
 $\Delta = 90^\circ$
 $R = 20'$
 $L = 31.42'$

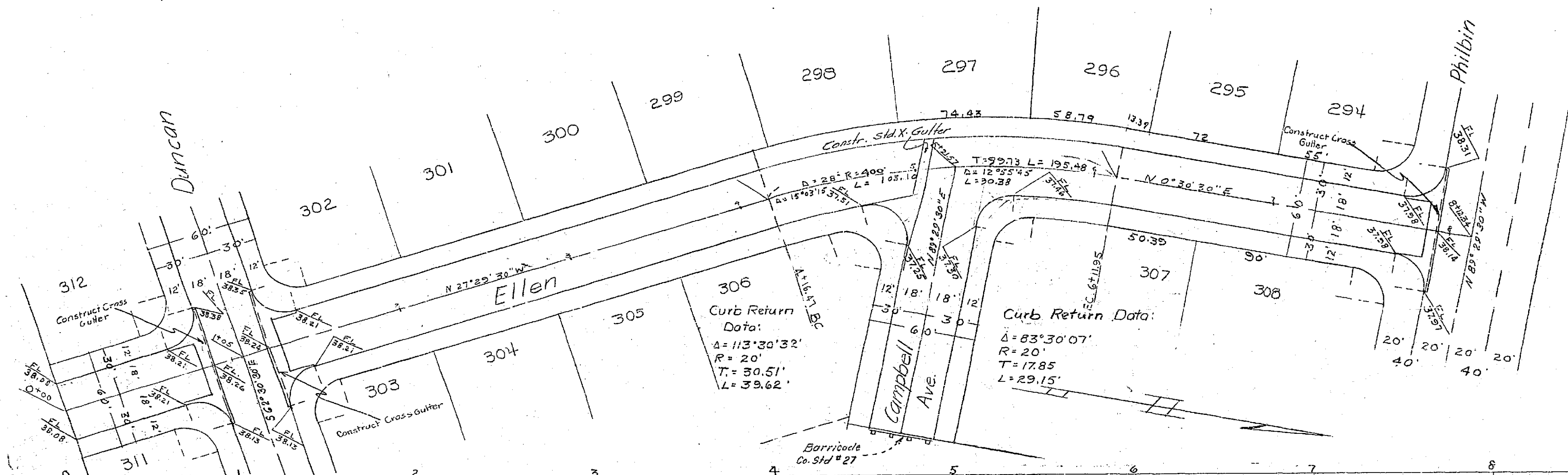
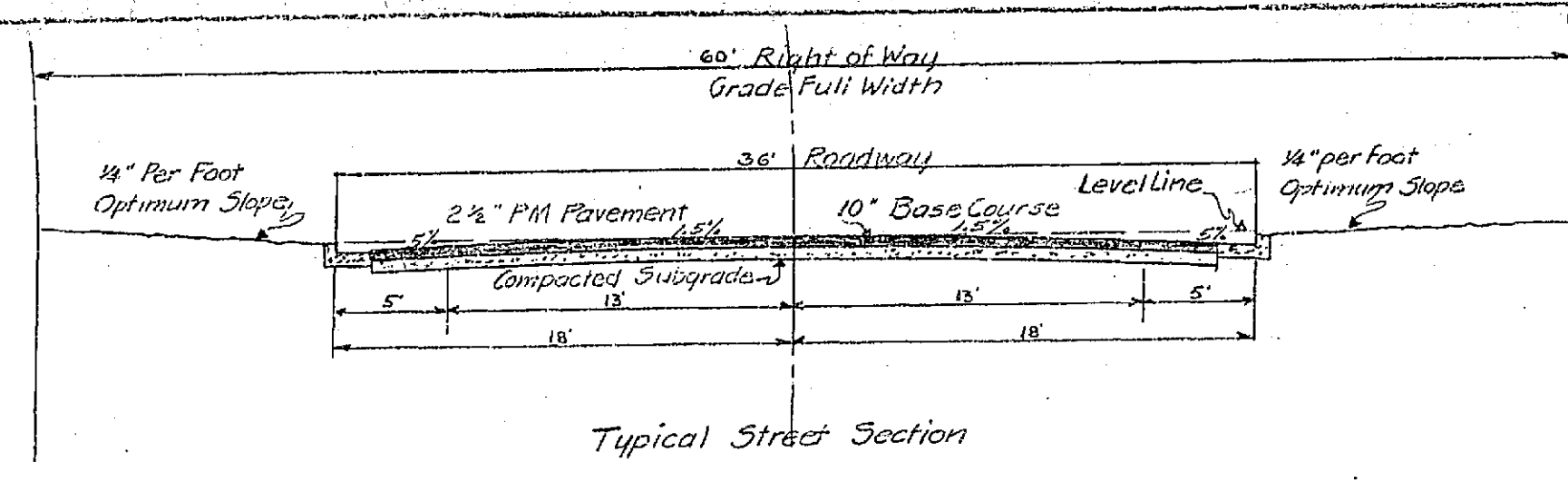


R-558 723-R

ELLEN STREET

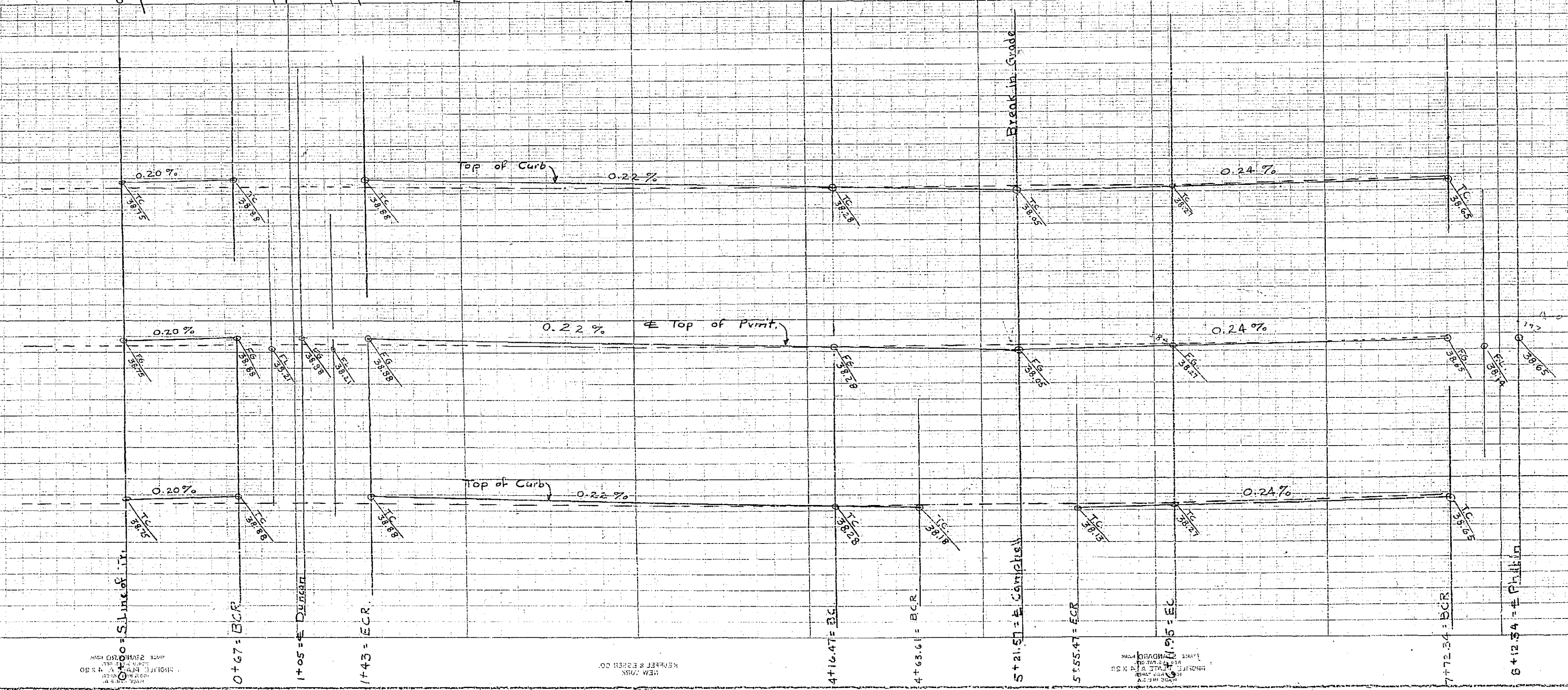
Drawn By	SIERRA FOOTHILLS NO. 4	
Checked By		
Approval Recommended:	Approved:	Date:
W. R. MAXWELL Land Surveying and Construction License 350 W. Base Line	LLS 2789 San Bernardino, Calif.	Sheet 2 of 3
Scale:	Specification No.:	

Approved By E. D. Russell 4-1-57
For Road Commissioner - Riverside County.



Curb Return Data, Unless Otherwise Shown:
 $\Delta = 90^\circ$
 $R = 20'$
 $L = 31.42'$

B.M. RR Spike in Guy Pole
 S.E. Cor. Philbin & Richer Sts.
 EL. 737.83

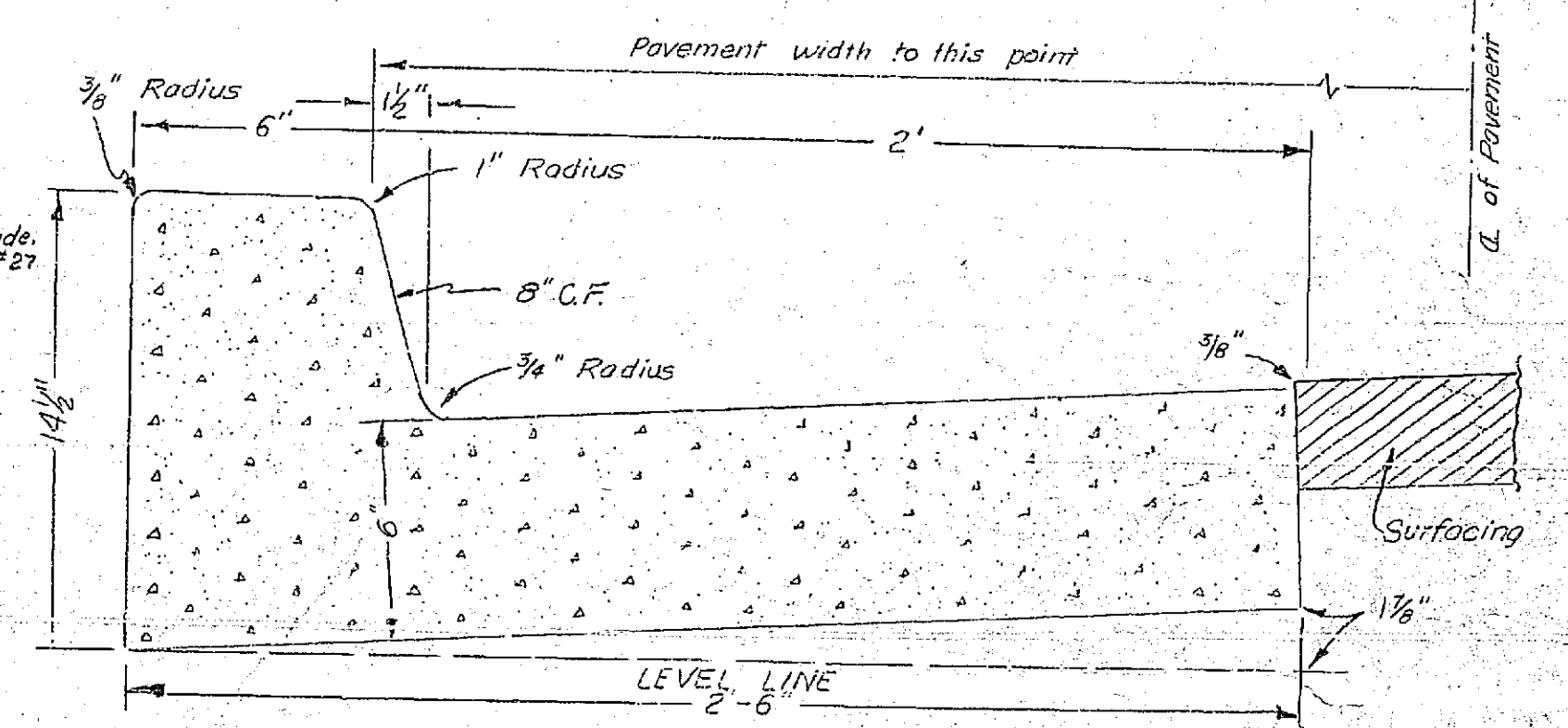
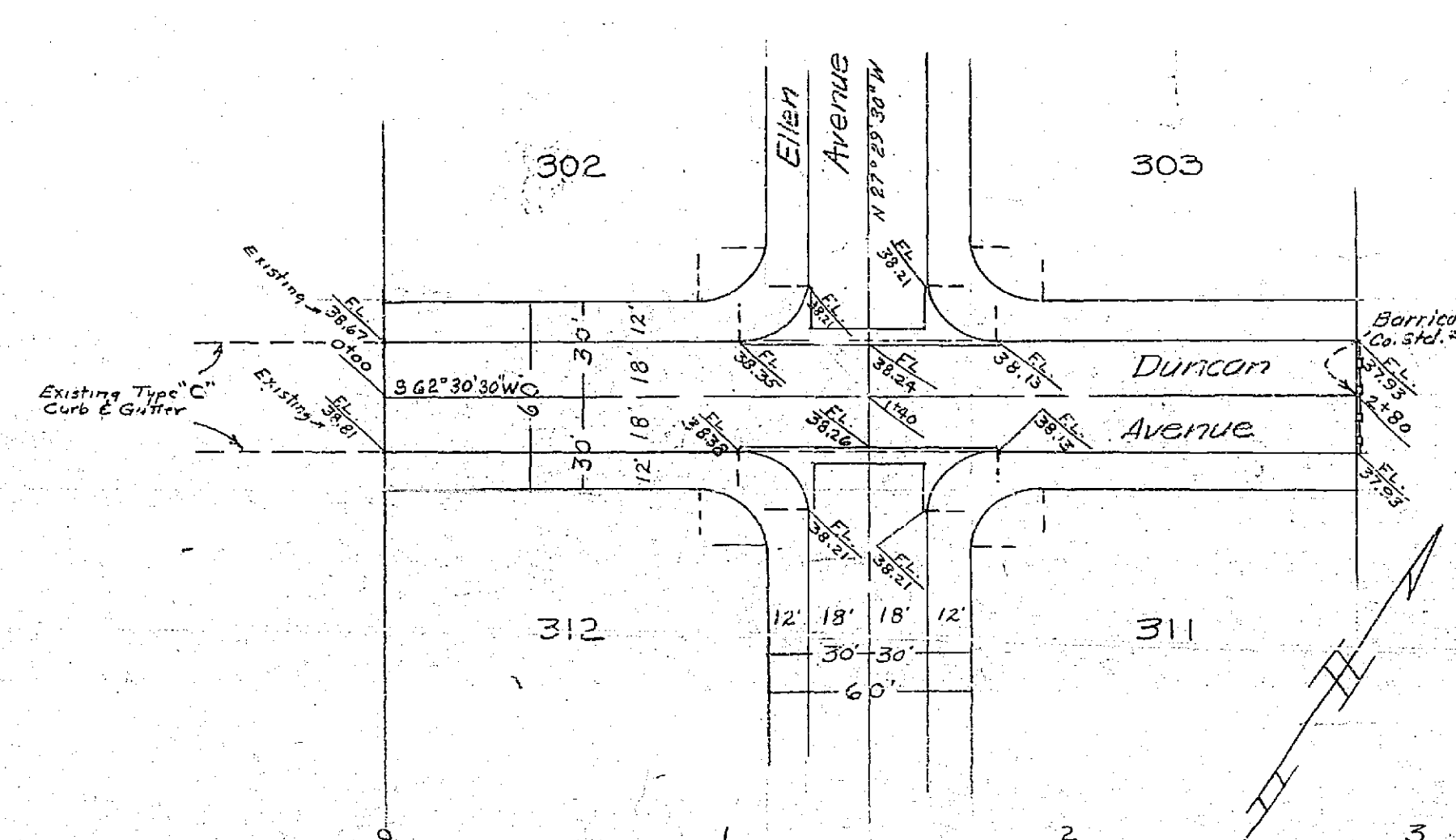
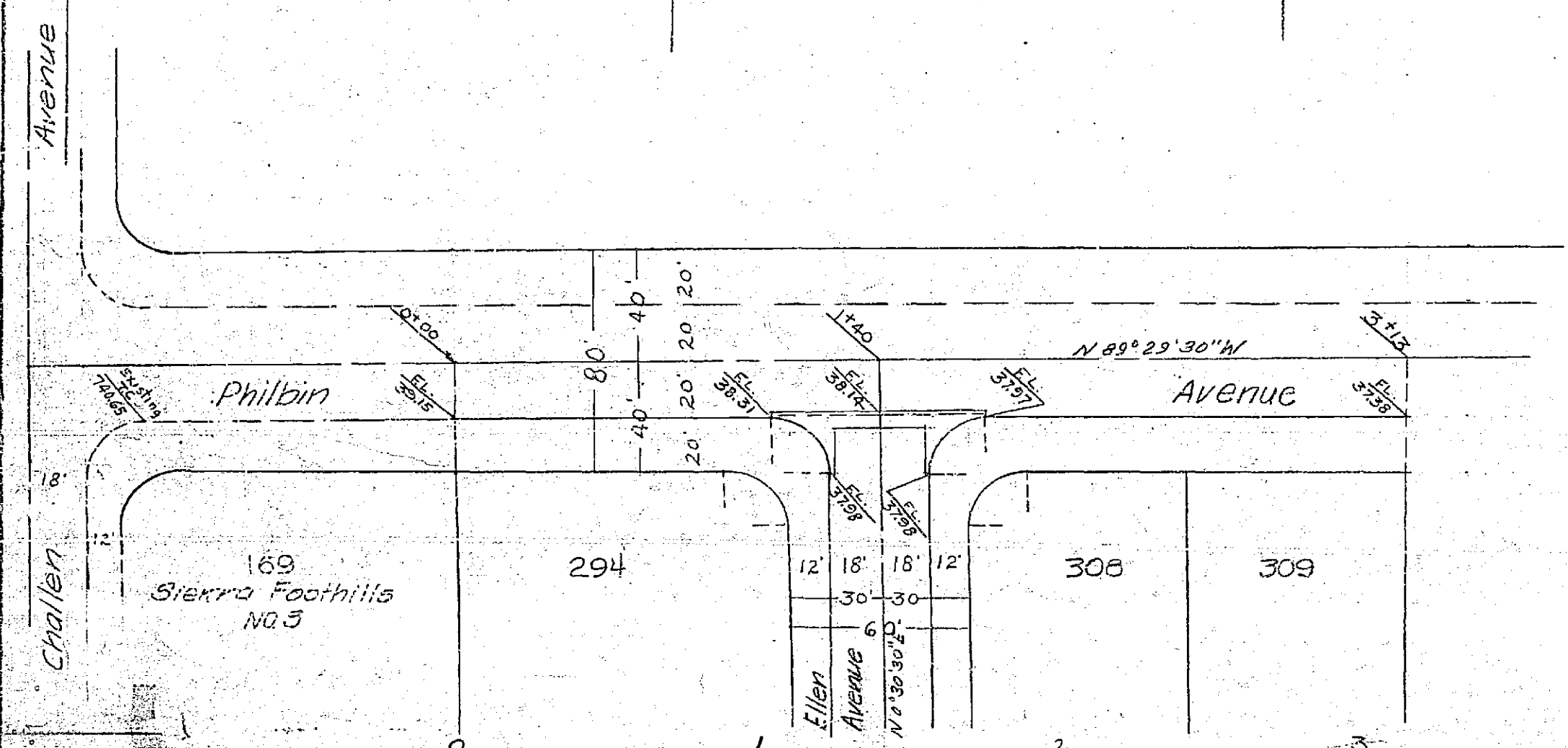
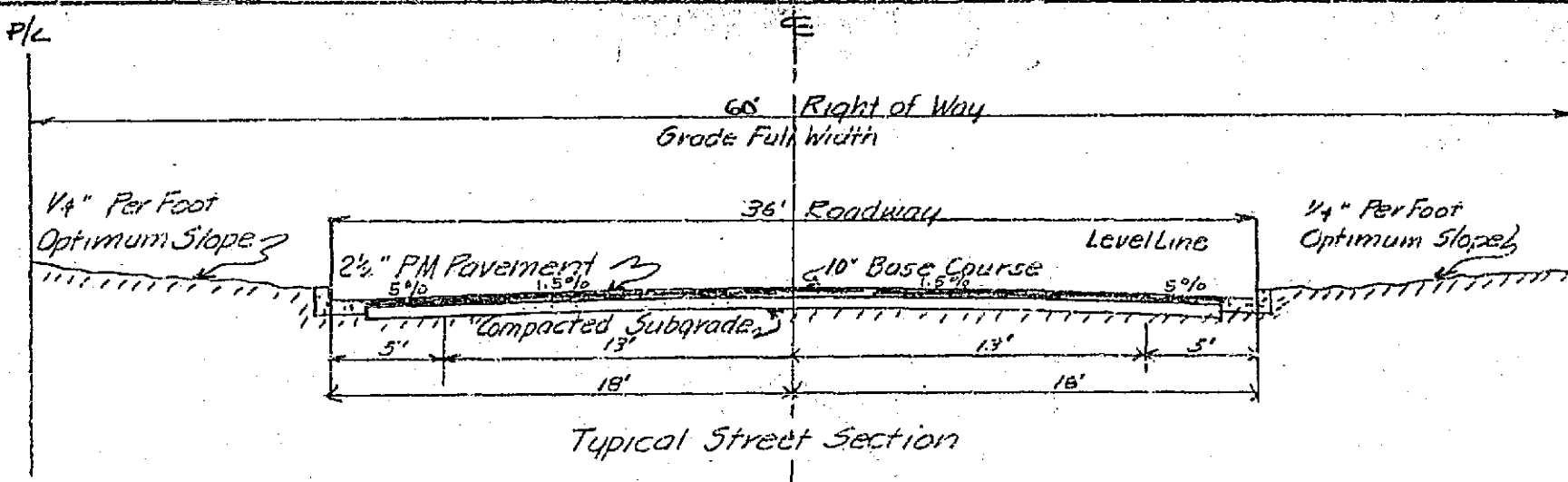
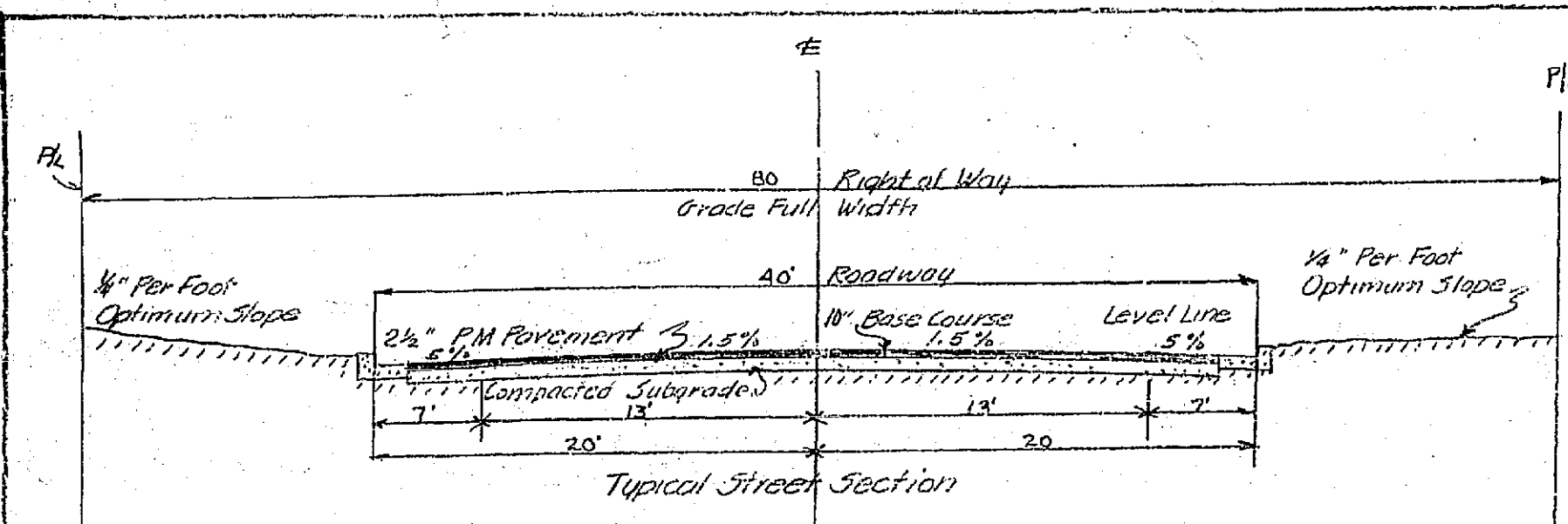


R-558 723-R

Philbin Ave - Duncan Ave

File No.	SIERRA FOOTHILLS		
Drawn By	NO. 4		
Checked By	Approved	Date	Drawing No.
Approval Stamp/Date	Approved	Date	Sheet 1 of 3
W. R. MAXWELL Civil Surveying and Construction Layout 355 W. Base Line		ILLS 2788 San Bernardino, Calif.	Scale: 1" = 40'

Approved By: *B. D. Powell* 4-1-57
For Road Commissioner, Riverside County

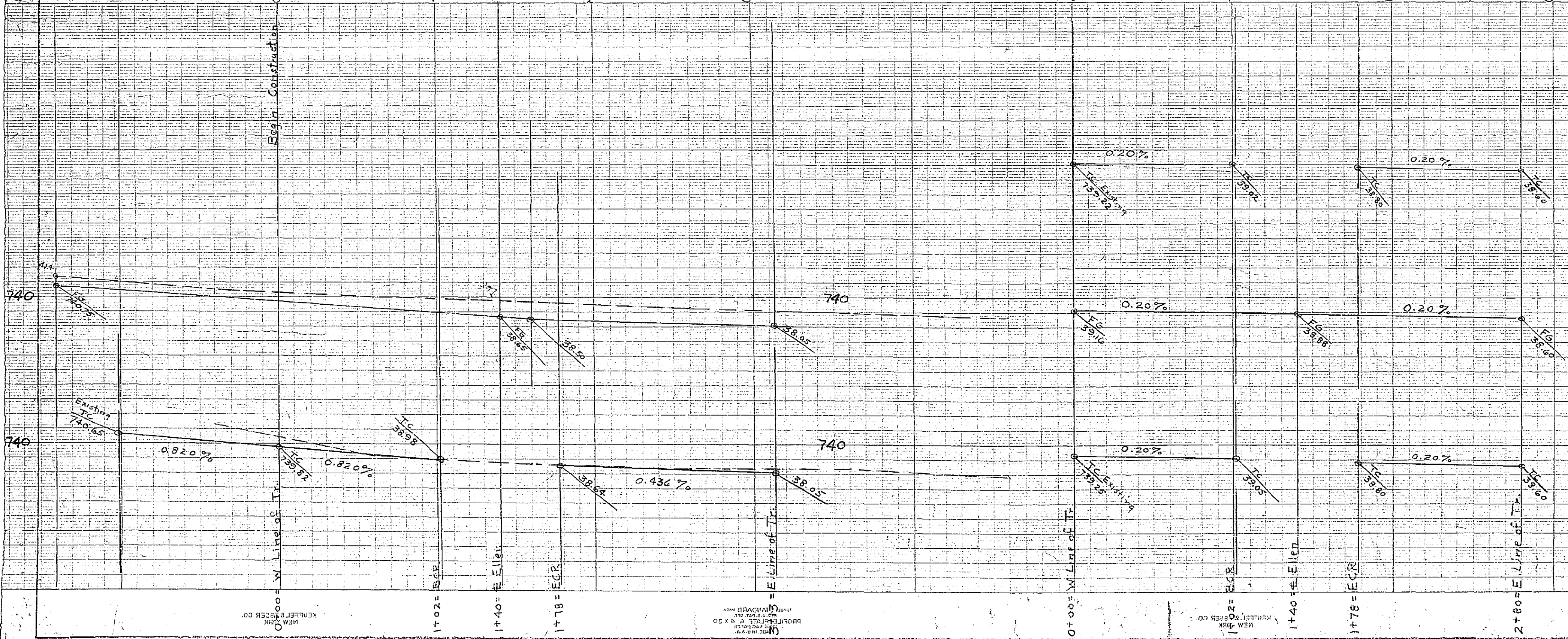


B.M. RR Spike in P.P.
S.E. Cor. Duncan & Challen Sts.
Elev. 741.32

Quantities:
Curb & Gutter - 2562 Lin. Ft.
Plant Mix Surfacing - 40,435 sq. Ft.
Cross Gutters - 3

NOTES

1. All work shall conform to the requirements of the requirements of the Riverside County Road Department Specifications for the improvement of subdivision, dated 12-56.
2. Subdivider will install street signs conforming to County Standard No. 28, as directed.
3. Any relocation of existing utilities to clear the proposed work shall be the responsibility of the subdivider.
4. Pavement widening to meet curb to be done by County Forces. Subdivider will grade, place base material, and leave in a condition safe for traffic.



R-558723-R