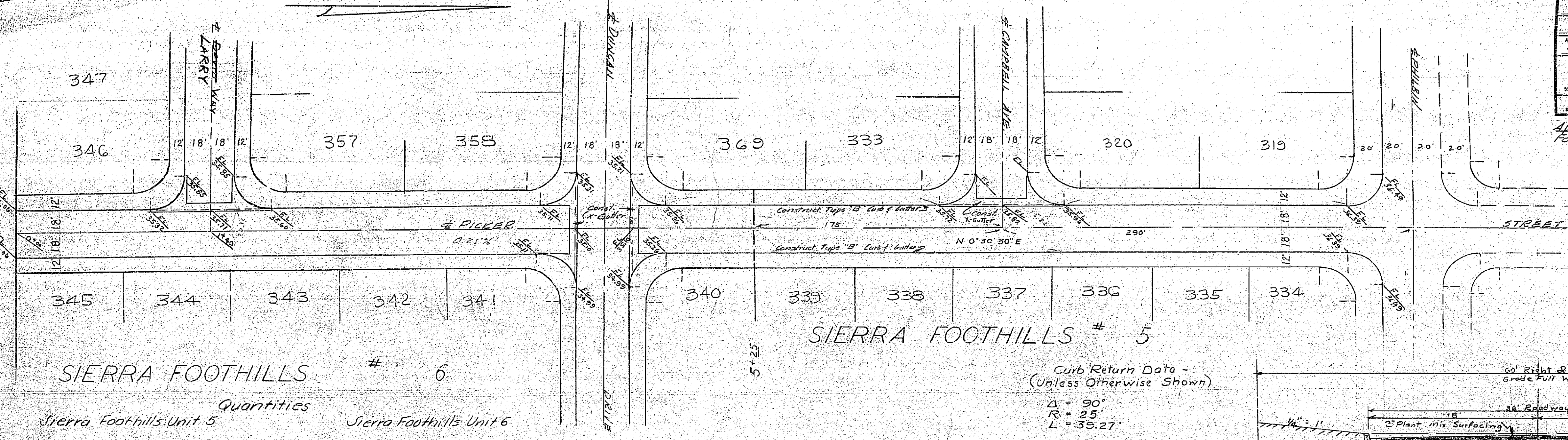


Project No. FS 14229	STREET PLANS SIERRA FOOTHILLS UNITS 5 & 6	
Checked By	Approved B-57	Date 8-28-57
Approved (Signature)	Approved (Signature) B.D. Bunch	Checked By
U. D. MAXWELL Lead Surveying and Construction Layout 310 W. Main St.		LLS 9788 San Bernardino, Calif. Sheet 1 of 4
Scale: Hor. 1" = 40' Vert. 1" = 4'		Continuation No.

Approved by **B-28-57** *[Signature]*
For Road Commissioner, Riverside County

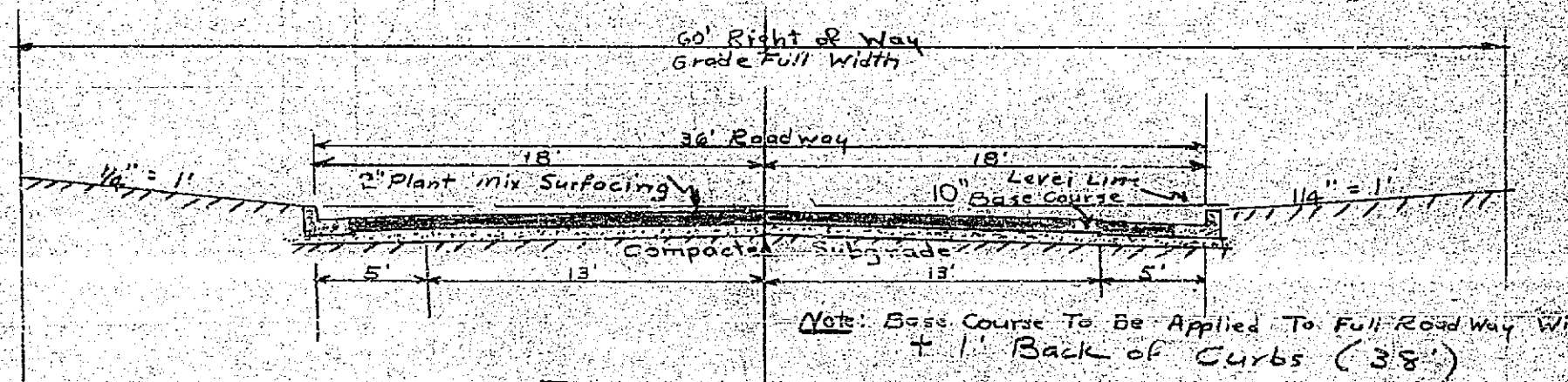


SIERRA FOOTHILLS # 6

Quantities

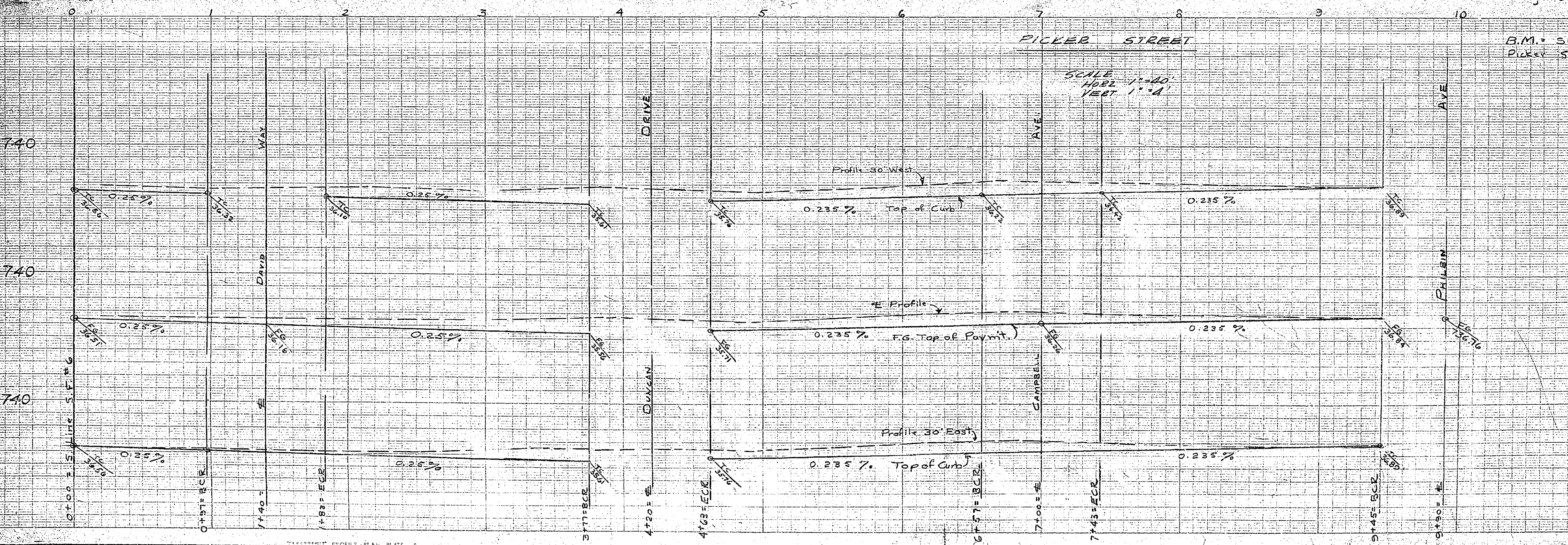
Sierra Foothills Unit 5	Sierra Foothills Unit 6
Curb & gutter - 2376 lin ft.	Curb & gutter - 3024 lin ft.
Cross gutter - 424 sq ft	Cross gutter - 1696 sq ft
Paving - 35,820 sq ft	Paving - 61,120 sq ft
Excavation (street) - 2100 cu yds	Excavation (street) - 3400 cu yds

Curb Return Data -
(Unless Otherwise Shown)
 $\Delta = 90^\circ$
 $R = 25'$
 $L = 35.27'$



TYPICAL STREET SECTION
County Std. No. 1

B.M. Spike in Guy Pole SE Cor. Int. of
Picker St. & Phillin Ave - E.L. 737.80



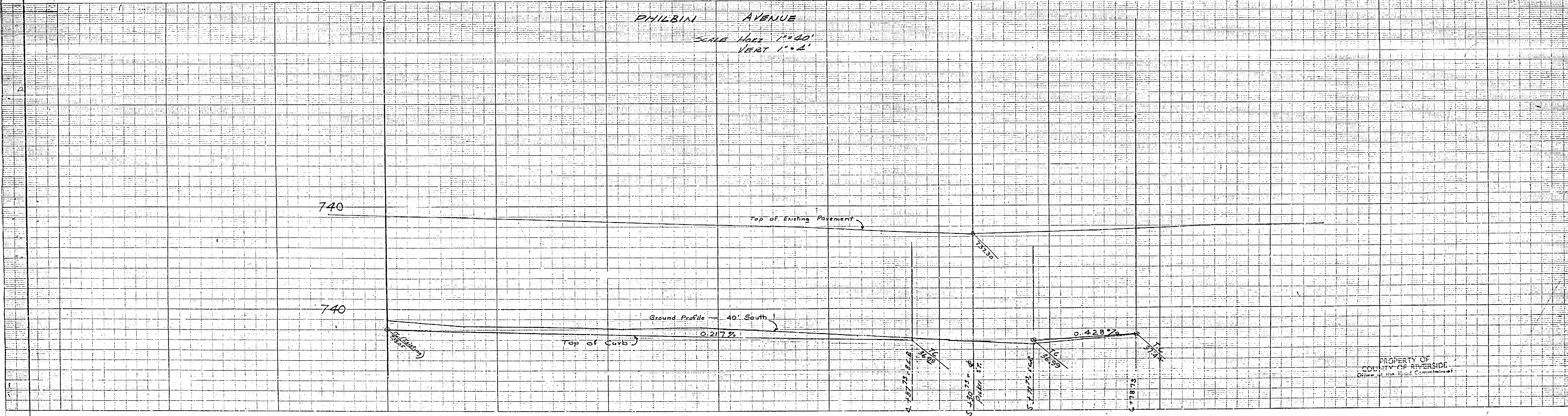
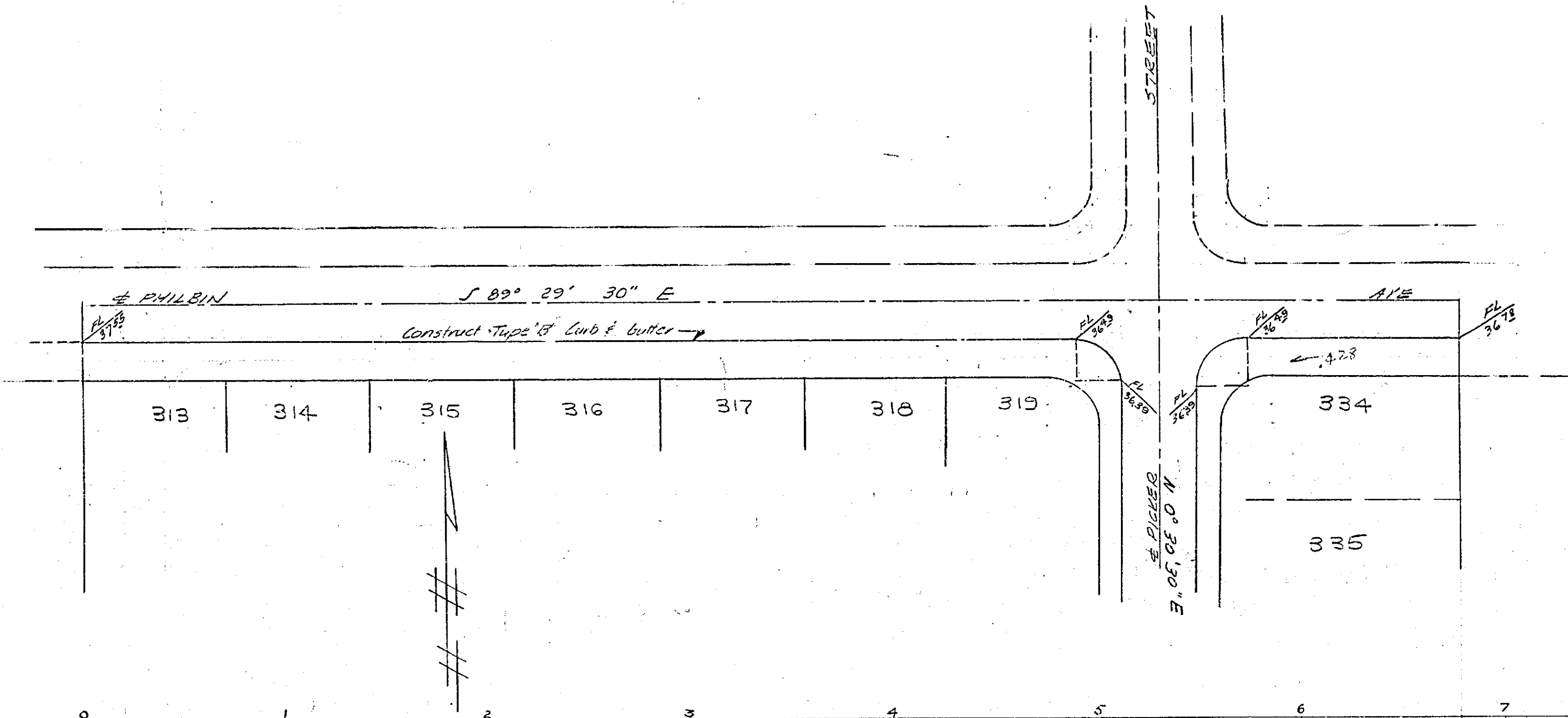
CLEARPRINT PAPER CO.
MADE IN U.S.A.

R-559 725

PROPERTY OF
COUNTY OF RIVERSIDE
Office of the Road Commissioner

File No.	STREET PLANS SIERRA FOOTHILLS #5	
Drawn By		
Checked By		
Approval Recommended:	Approved:	Date:
W. R. MAXWELL 210 W. Base Line Land Surveying and Construction San Bernardino, Calif.		LLS 2788 San Bernardino, Calif. Sheet 2 of 4
Scale:	Horizontal No.:	

Approved by *B-28-57 Paul D. Stone*
For Road Commissioner, Riverside County



PROPERTY OF
COUNTY OF RIVERSIDE
Office of the Road Commissioner

NEW YORK
KELLEY & GREEN CO.
ENGINEERS

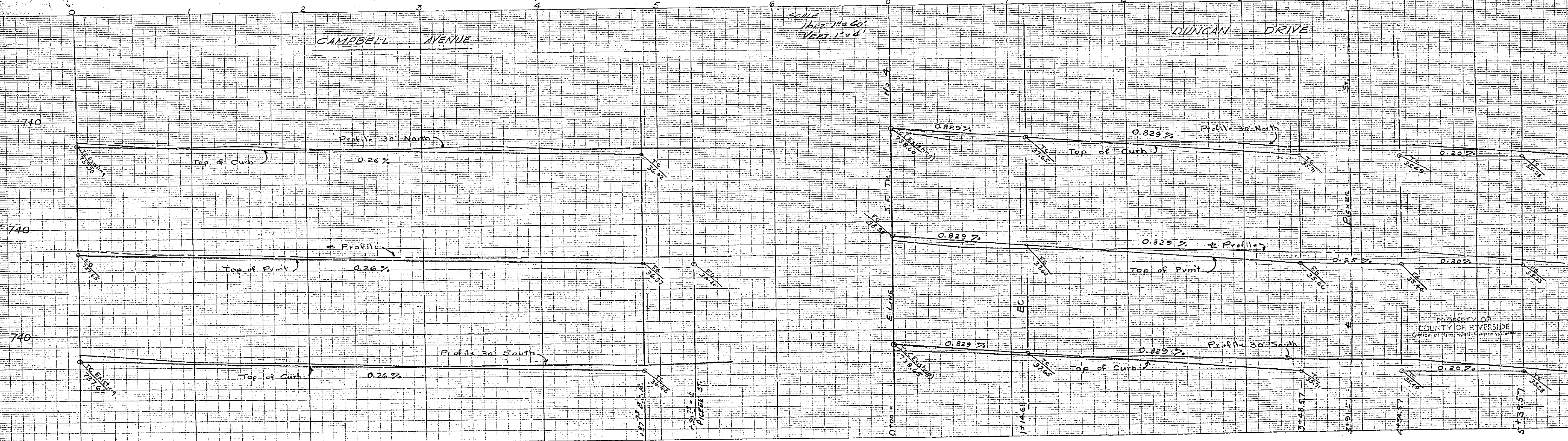
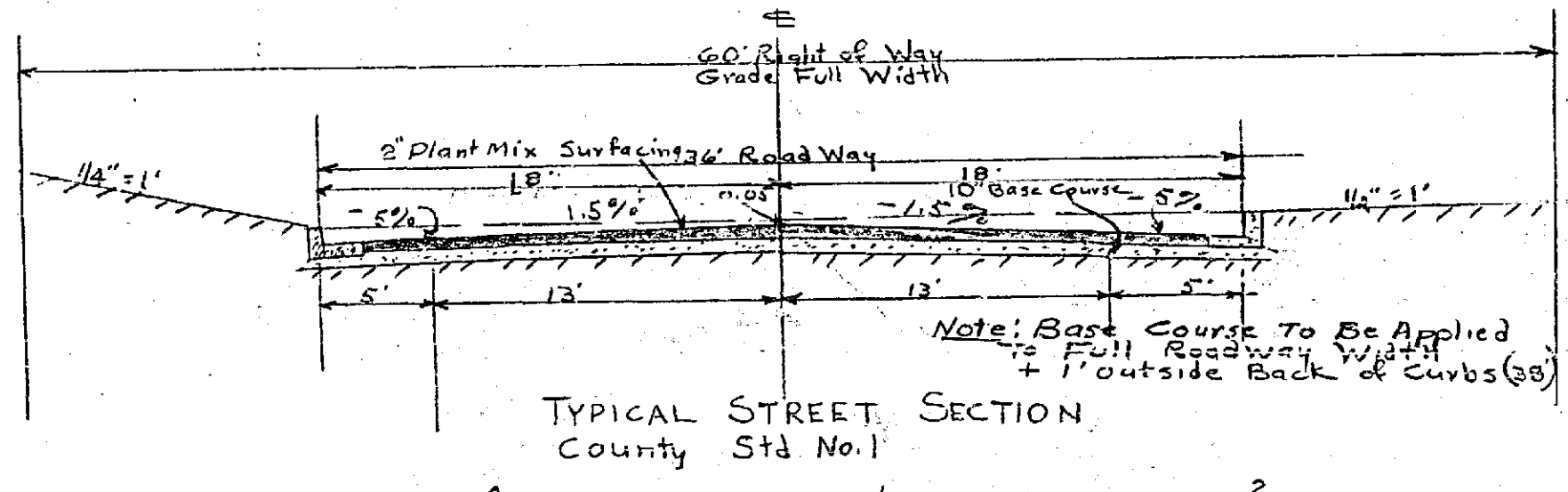
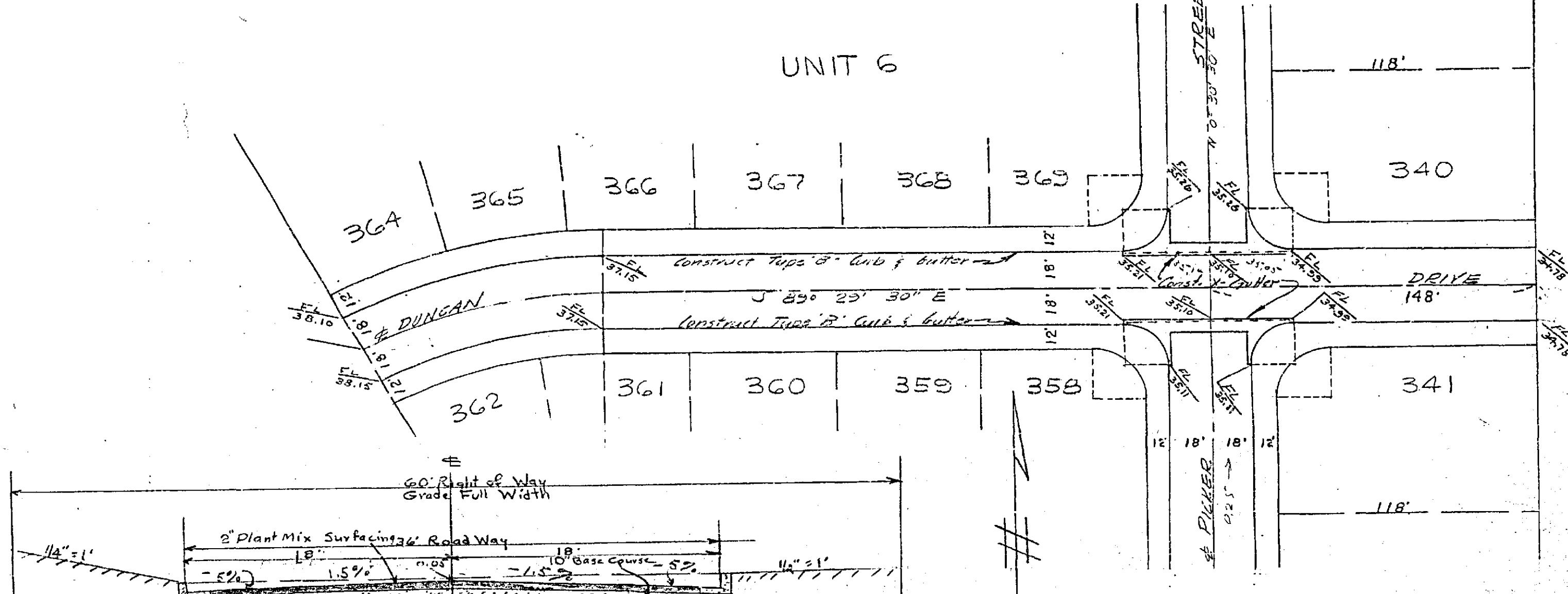
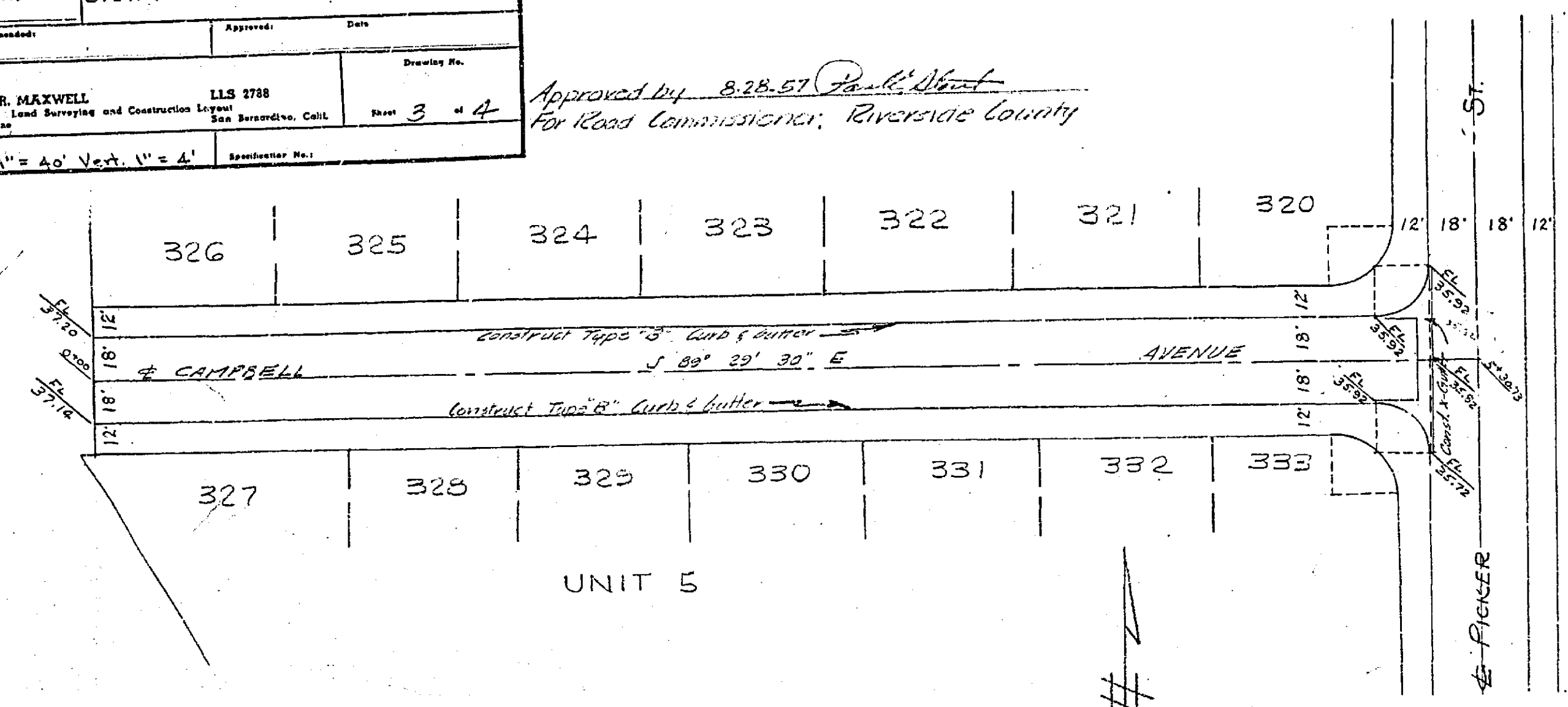
NEW YORK
KELLEY & GREEN CO.
ENGINEERS

NEW YORK
KELLEY & GREEN CO.
ENGINEERS

R-559-725-J

File No. FR 74 620	STREET PLANS	
Drawn By	SIERRA FOOTHILLS UNIT 5 & 6	
Checked by	Approved	Date
Approved Recommended	Approved	Date
W. R. MAXWELL Lead Surveying and Construction Layout 230 W. Base Line	LLS 3788 San Bernardino, Calif.	Sheet 3 of 4
Scale Horiz. 1" = 40' Vert. 1" = 4'	Inspector No.	

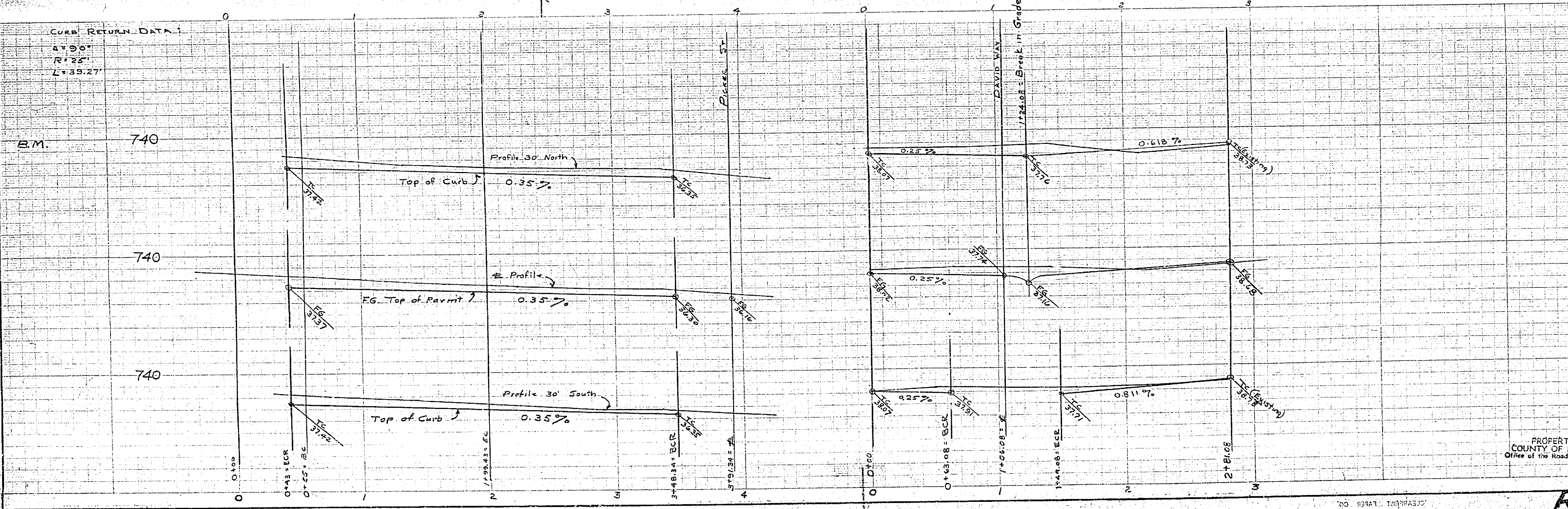
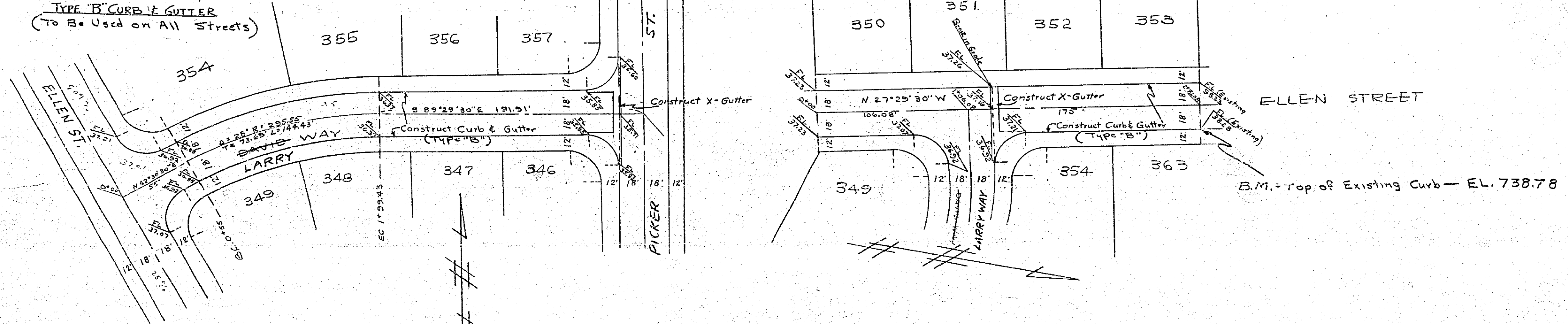
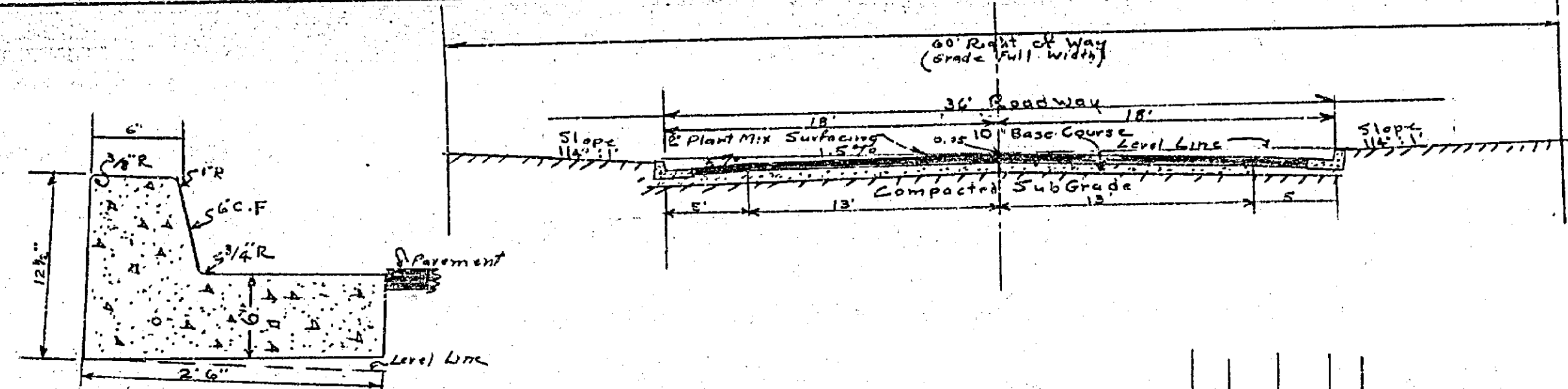
Approved by 8-28-57 *Frank W. Hunt*
For Road Commission, Riverside County



R-559-725-J

STREET PLANS SIERRA FOOTHILLS UNIT 6	
Drawn By	Checked By
Approved (Incorporated)	Approved Date
W. R. MAXWELL 210 W. Base Line San Dimas, Calif.	LLS 2788 Civil Engineer, Calif.
Sheet 4 of 4	Division No.

Approved by *[Signature]*
For Road Commissioner, Riverside County



PROPERTY OF
COUNTY OF RIVERSIDE
Office of the Road Commissioner

R-559728