

BENCH MARK: Spike in RR #194205 West side of Sunfield Avenue and N.E. Corner of Lot #21 Elev. = 1183.70 (F.B. #38/16).

NOTE: CURB LINE FRAMES TO BE FULL 30" HIGH. SET BACKS TO BE WITH BARBED WIRE TO BE DELETED.

APPROVED BY: <i>Albert A. Webb</i> CIVIL ENGINEER No. 1172/63		ALBERT A. WEBB ASSOCIATES CIVIL ENGINEERS - RIVERSIDE, CALIFORNIA APPROVED <i>Edwin N. White</i> DATE 11/10/61 No. 5122	
REVISION MARK DATE DESCRIPTION 1 11/22/63 APPROVED NOTE TO CHANGE CURB LINE FRAMES TO 30" HIGH		CITY OF RIVERSIDE, CALIFORNIA DEPARTMENT OF PUBLIC WORKS STREET PLAN AND PROFILE ALESSANDRO BLVD. Sta. 141+41.35 to Chicago Ave. TRACT NO. 2264	
DATE 12 Oct 1961 DRAWN JUN CHECKED CAR	SCALE 1"=50' W.D. 61-161 F.S. 11/20	APPROVED BY: <i>Edwin N. White</i> DIRECTOR OF PUBLIC WORKS DATE 7-14-1962	NO. R-561 SHEET 3 OF 3

PROFILE

DATE	
BY	
CHECKED	
NO. OF SHEETS	
NO. OF THIS SHEET	
NO. OF SHEETS CHECKED	
NO. OF THIS SHEET CHECKED	
NO. OF SHEETS DRAWN	
NO. OF THIS SHEET DRAWN	

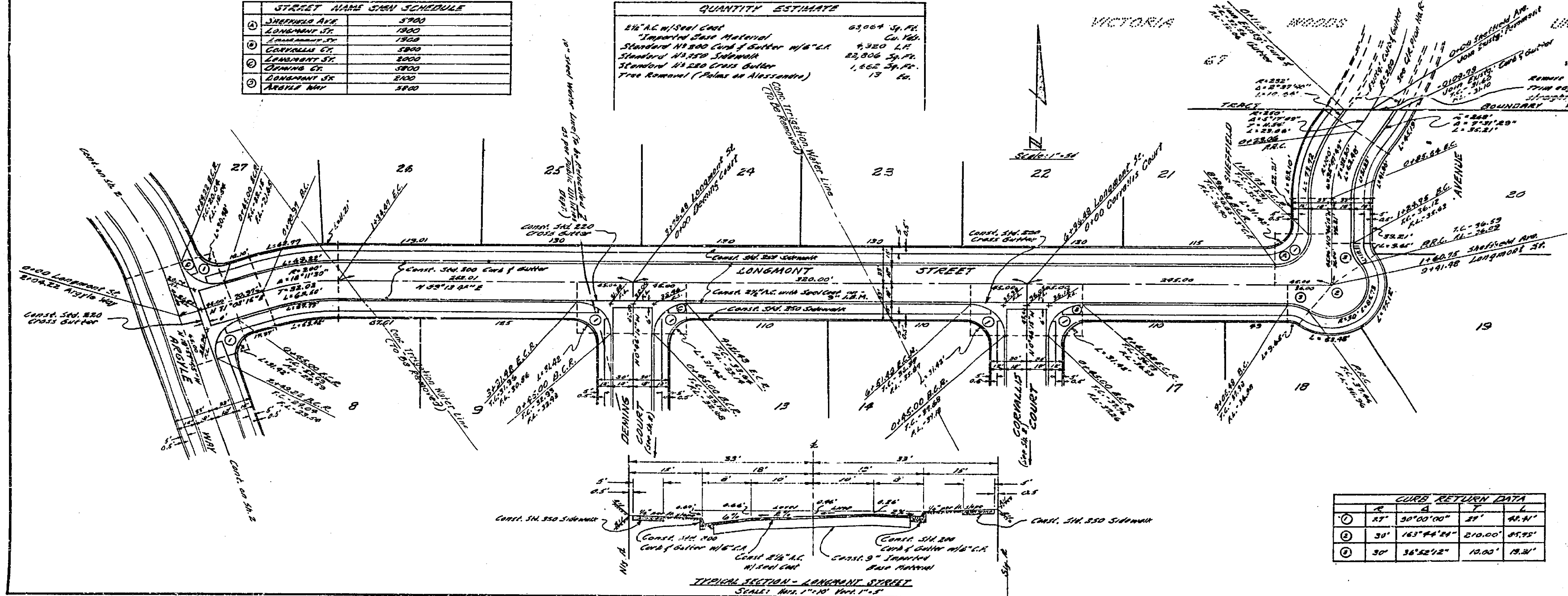
PLAN

DATE	
BY	
CHECKED	
NO. OF SHEETS	
NO. OF THIS SHEET	
NO. OF SHEETS CHECKED	
NO. OF THIS SHEET CHECKED	
NO. OF SHEETS DRAWN	
NO. OF THIS SHEET DRAWN	



STREET NAME SIGN SCHEDULE	
①	WINDMILL AVE 3900
②	LONGMONT ST 1800
③	LONGMONT ST 1800
④	LONGMONT ST 1800
⑤	LONGMONT ST 1800
⑥	LONGMONT ST 1800
⑦	LONGMONT ST 1800

QUANTITY ESTIMATE	
5 1/2" x 6" WISCON C&G	63,064 Sq. Ft.
Standard 14,500 Cord of Suffer w/18" x 18"	4,320 L.F.
Standard 14,500 Subsoil	22,806 Sq. Ft.
Standard 14,500 Cord Suffer	1,452 Sq. Ft.
Tree Removal (Pines at Westland)	12



BENCH MARK - Spike in P.D. 10408 J West Side of Sheffield Avenue & NE Corner of Lot 21. Elev. 1188.70 (12-13-52)

GENERAL NOTES

- IT SHALL BE THE RESPONSIBILITY OF THE CONTRACTOR TO CLEAR THE RIGHT OF WAY IN ACCORDANCE WITH THE REQUIREMENTS OF LAW AND TO PROVIDE SUCH UTILITY INCLUDING INTERSECTION SIGNS AND STRUCTURES AND AT HIS COST TO THE CITY.
- CONSTRUCTION SHALL BE IN ACCORDANCE WITH THE CITY OF RIVERSIDE, DEPARTMENT OF PUBLIC WORKS SPECIFICATIONS No. 881 AND STANDARD DRAWINGS.
- IF THE SUBDIVISION INTENDS TO REMOVE ANY IMPROVEMENTS FROM ANY PART OF THE IMPROVEMENTS, THE CITY OF RIVERSIDE WILL BE RESPONSIBLE FOR THE REPAIRS AND THE CITY OF RIVERSIDE WILL MAKE A TEST OF THE IMPROVEMENTS IN PLACE. BEFORE ANY TEST OF THE IMPROVEMENTS IS CONDUCTED BY THE SUBDIVISION ENGINEER.
- PAVE CURB AND PAINT ANDERS ARE REQUIRED.

ALBERT A. WEBB ASSOCIATES
 CIVIL ENGINEERS - RIVERSIDE, CALIFORNIA
 APPROVED: *Albert A. Webb* N. W. 02 DATE 12/29/61
 BY: *AW*

CITY OF RIVERSIDE, CALIFORNIA
 DEPARTMENT OF PUBLIC WORKS

STREET PLAN AND PROFILE
 LONGMONT STREET
 SHEFFIELD AVENUE
 TRACT NO. 2268

REVISION	
MARK	DATE

DATE: 11 OCT 1961
 DRAWN: *AW*
 CHECKED: *AW*
 D.W.B. A.S.S. W.D.S.

SCALE: 1" = 30'
 W.D. 11-1-61
 P.B. 12/29/61

APPROVED BY: *AW*
 DIRECTOR OF PUBLIC WORKS
 DATE: 12/14/61

NO. **R-561**
 SHEET 1 OF 3

PROFILE	
DATE	BY

PLAN	
DATE	BY

