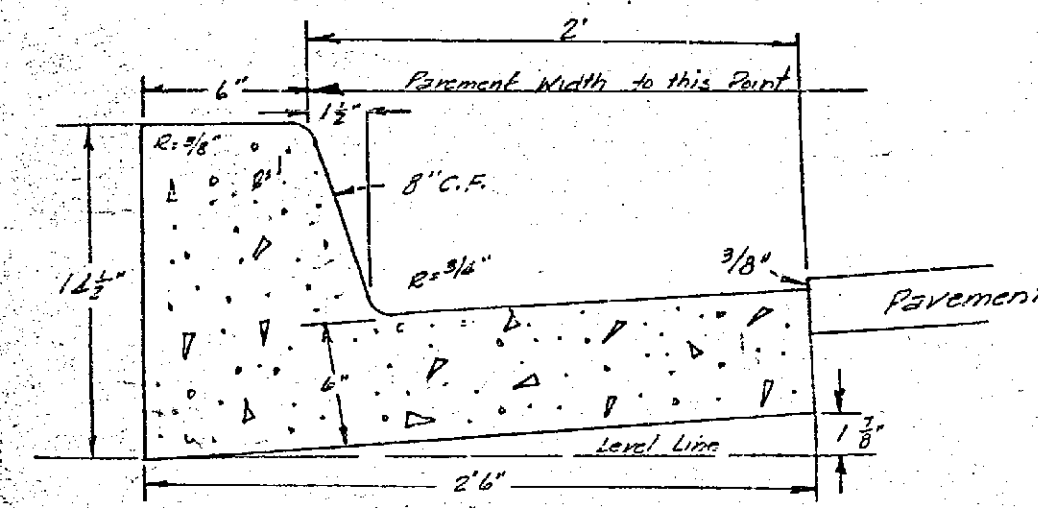
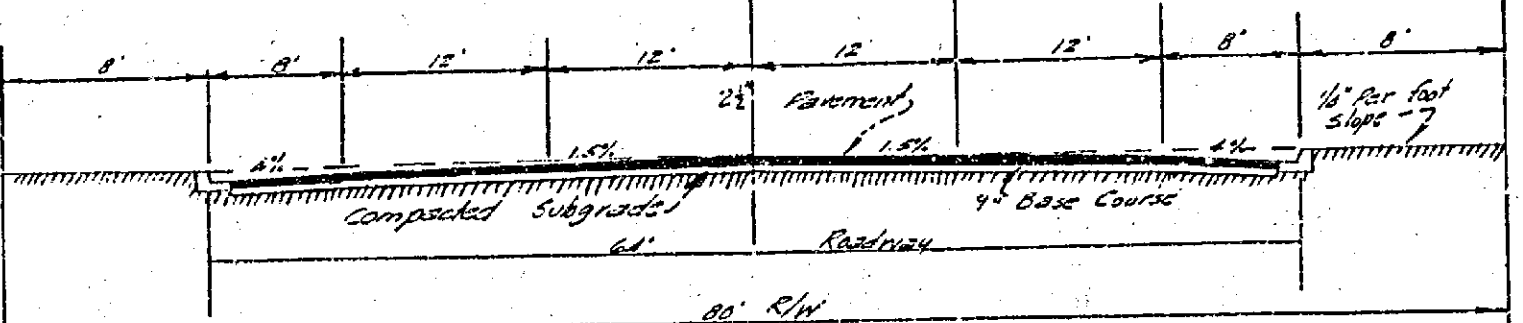
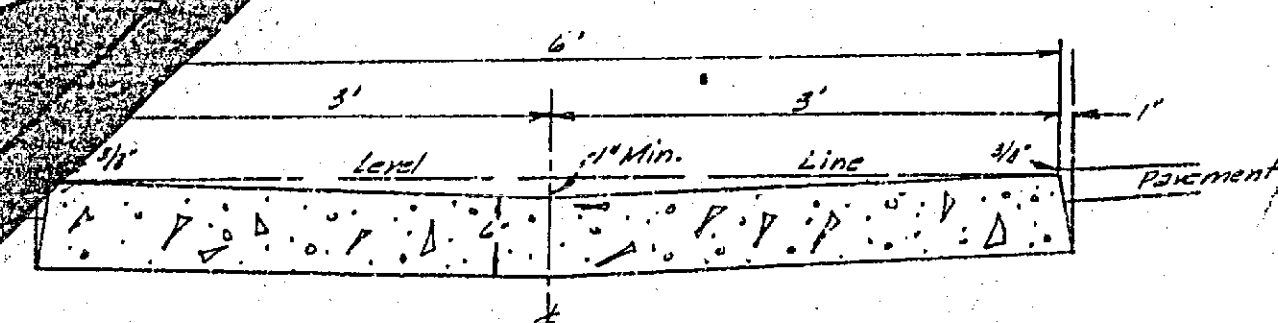


File No.	RB 74	Project Name	SERRA FOOTHILLS UNIT NO. 2
Drawn by		Location	CHALLENGE AVENUE
Checked by		Project Type	STREET PLANS AND PROFILES
Approval	W. E. Boggs	Scale	1" = 40'
Project No.	RE 4562	Sheet No.	1 of 5
Engineer	W. R. Maxwell	City	Riverside
Address	210 W. Base Line	State	Calif.

**GENERAL NOTES**

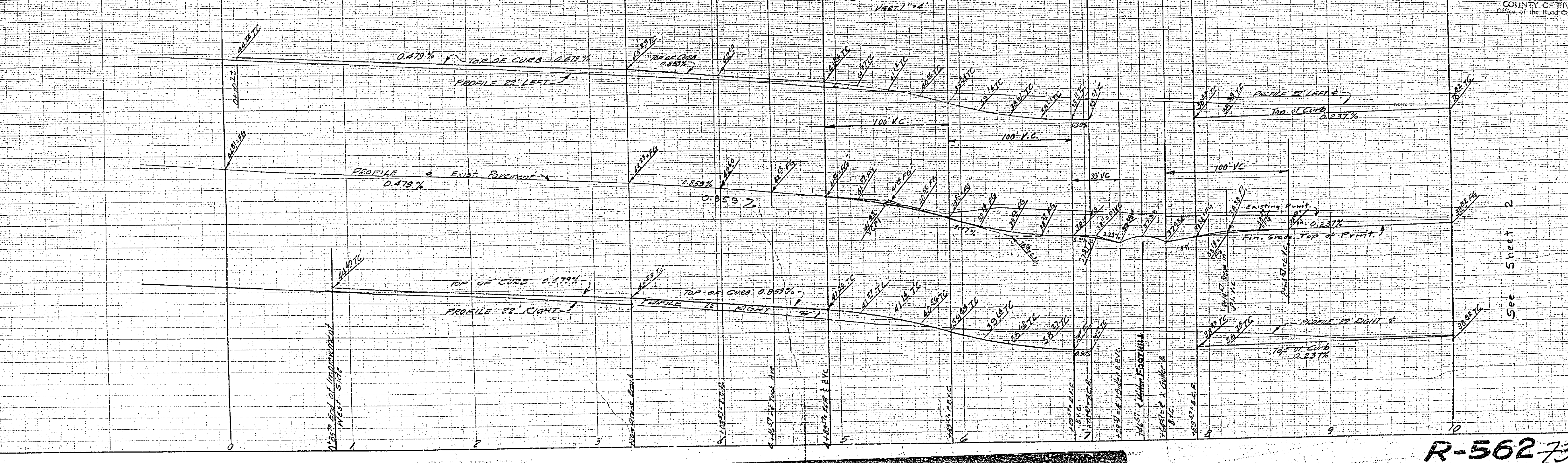
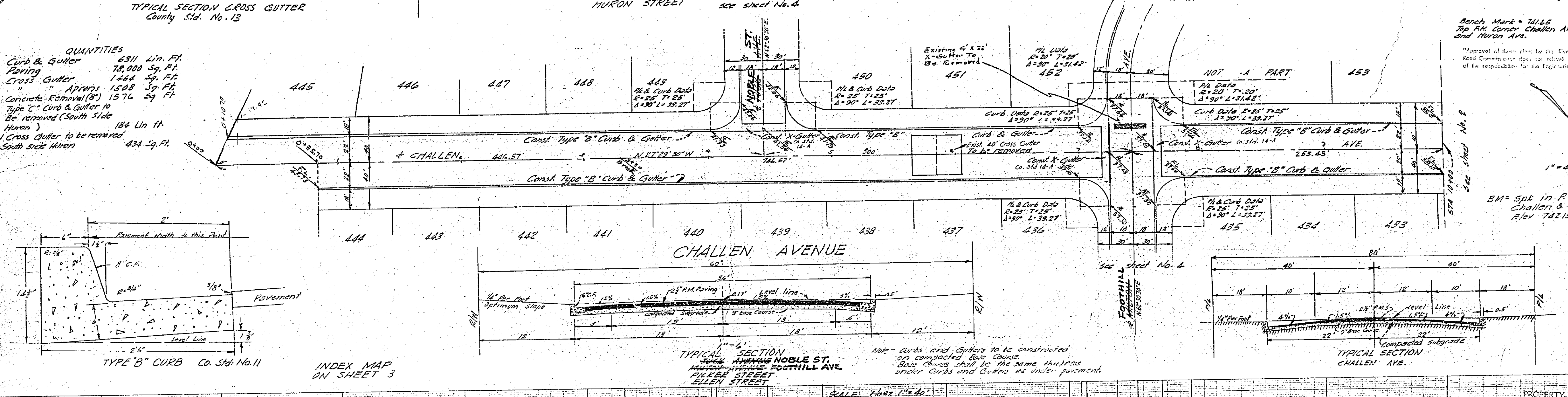
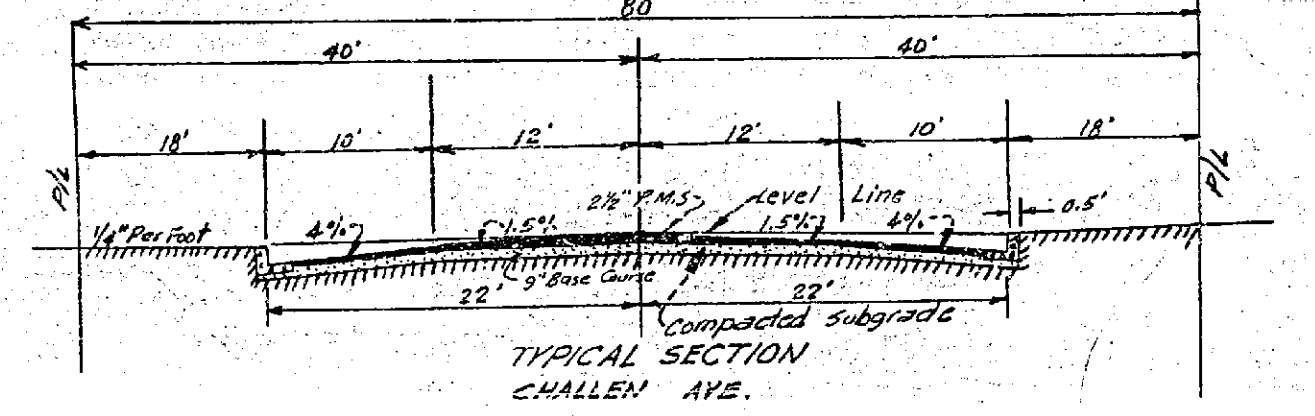
- All work shall conform to the requirements of the Riverside County Board of Public Works for the improvement of subdivision streets, dated 1956.
- Subdivider will install street name signs conforming to County Standard No. 28 as directed.
- Any relocation of existing utilities to clear the proposed work shall be the responsibility of the subdivider.
- Construct barricade (Co. Std. No. 27) at ends of all dead end streets.

**QUANTITIES**  
 Curb & Gutter 6311 Lin. Ft.  
 Paving 78,000 Sq. Ft.  
 Grass Gutter 1464 Sq. Ft.  
 Concrete Removal (8" Type C Curb & Gutter to be removed South side Huron) 184 Lin. Ft.  
 1 Cross Gutter to be removed South side Huron 434 Sq. Ft.



INDEX MAP ON SHEET 3

TYPICAL SECTION CHALLENGE AVENUE



R-562 731-G



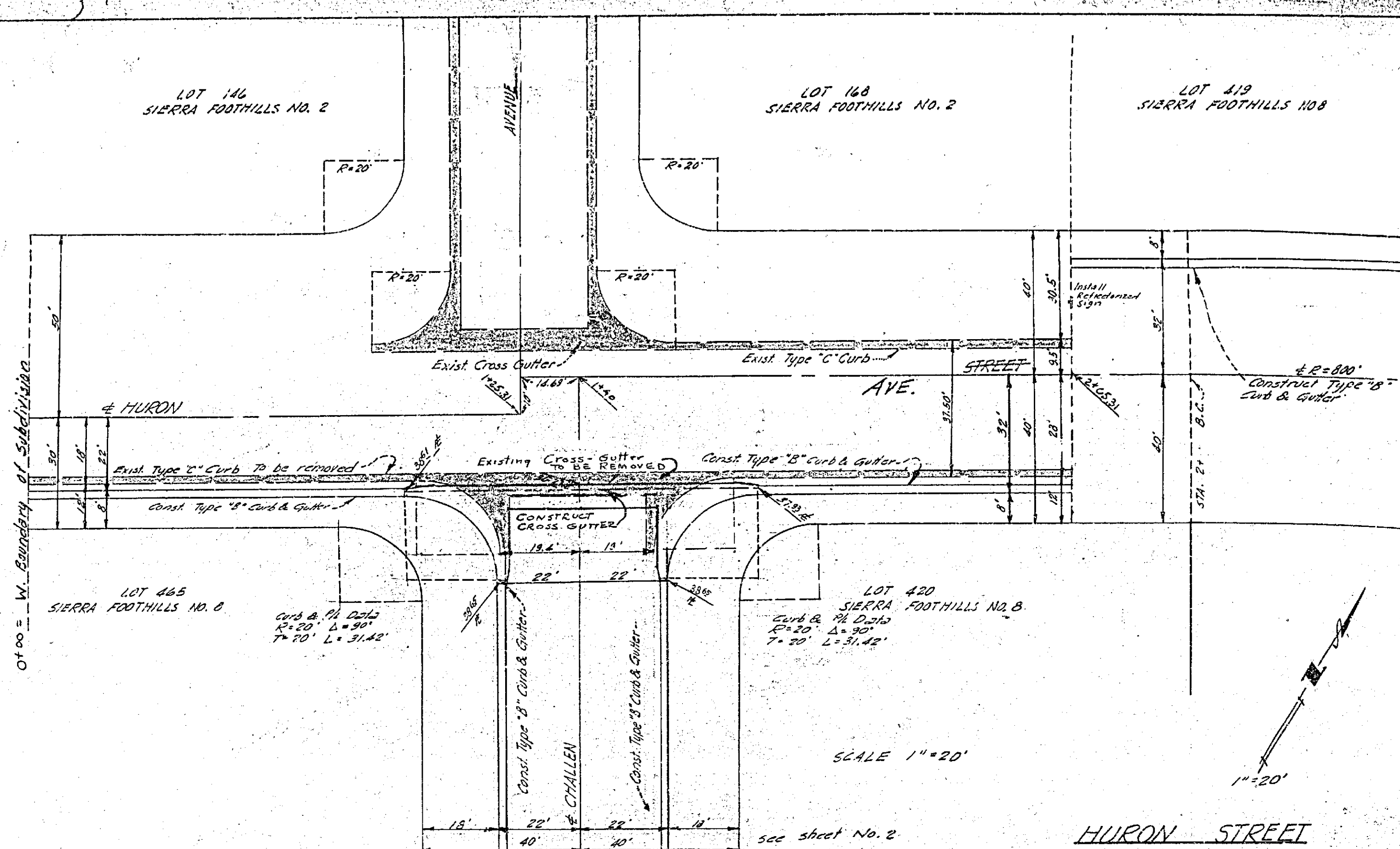
FIG. 74		SIERRA FOOTHILLS UNIT 1	
Drawn by		HURON STREET	
Checked by		STREET PLAN & PROFILE	
Approved Recommended:	W. B. Maxwell	Approved:	Date:
W. B. Maxwell	R. 4562	LLS 2788	Drawing No.
Land Surveyor and Construction		Survey	Sheet 5 of 5
340 W. Base Line		San Bernardino, Calif.	
Scale: HORIZ 1" = 20' VERT 1" = 2'		Specification No.:	

Approved by *[Signature]* Oct. 16, 1958  
 For Road Commissioner, Riverside County

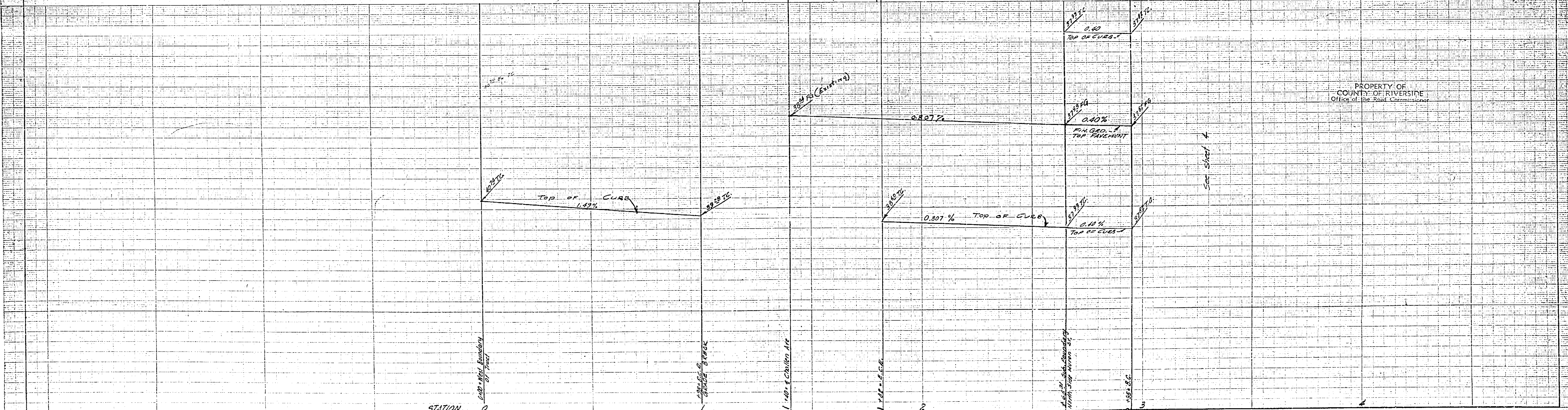
\*Approval of this plan by the Riverside County Road Commission is not a license or approval of the responsibility for the engineering design.\*

See Sheet No. 4

B.M. = Spk in P.P. N.W. Cor  
 Challen & Millen  
 Elev. 742.15'



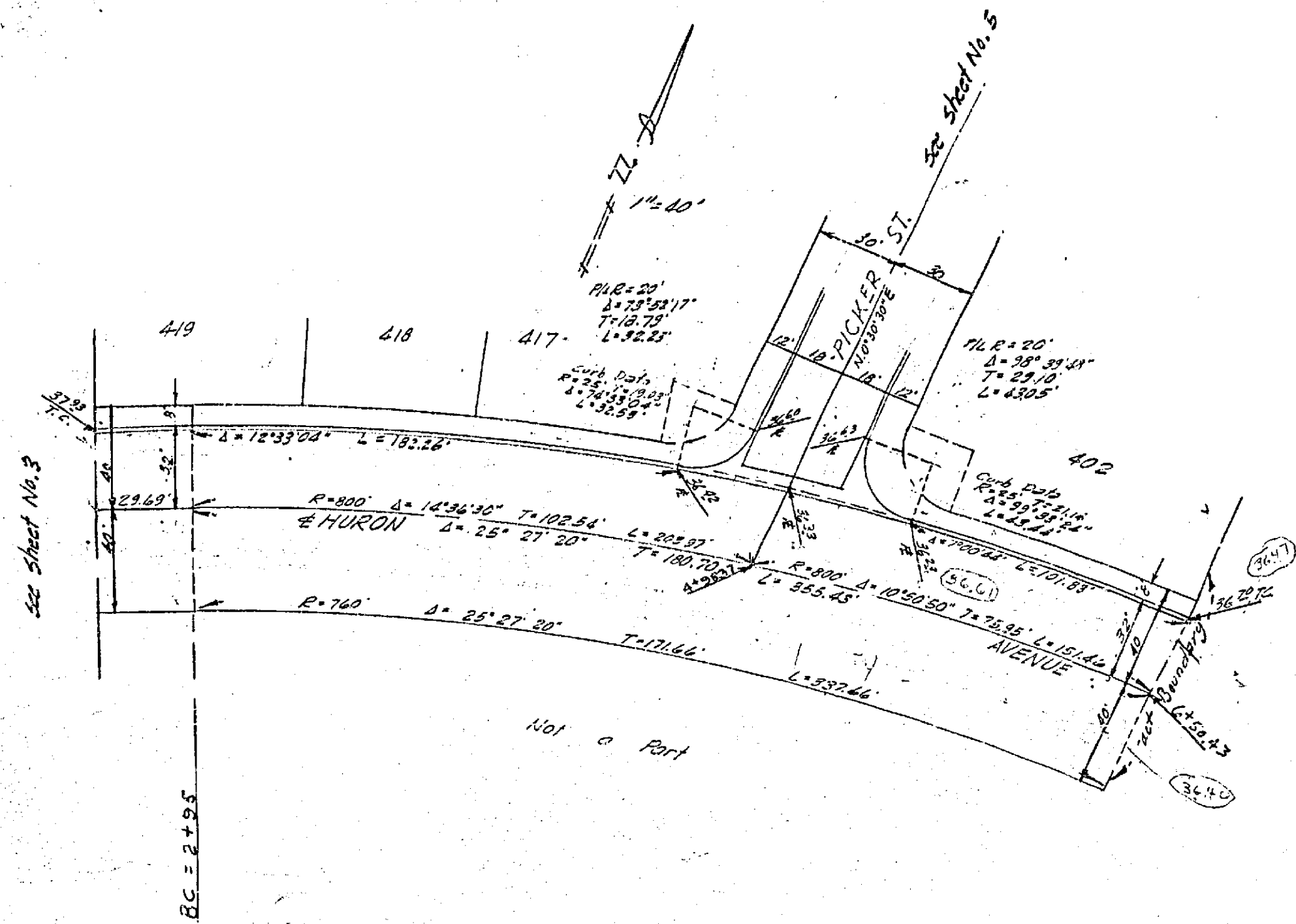
INDEX MAP ON SHEET 5



PROPERTY OF COUNTY OF RIVERSIDE Office of the Road Commissioner

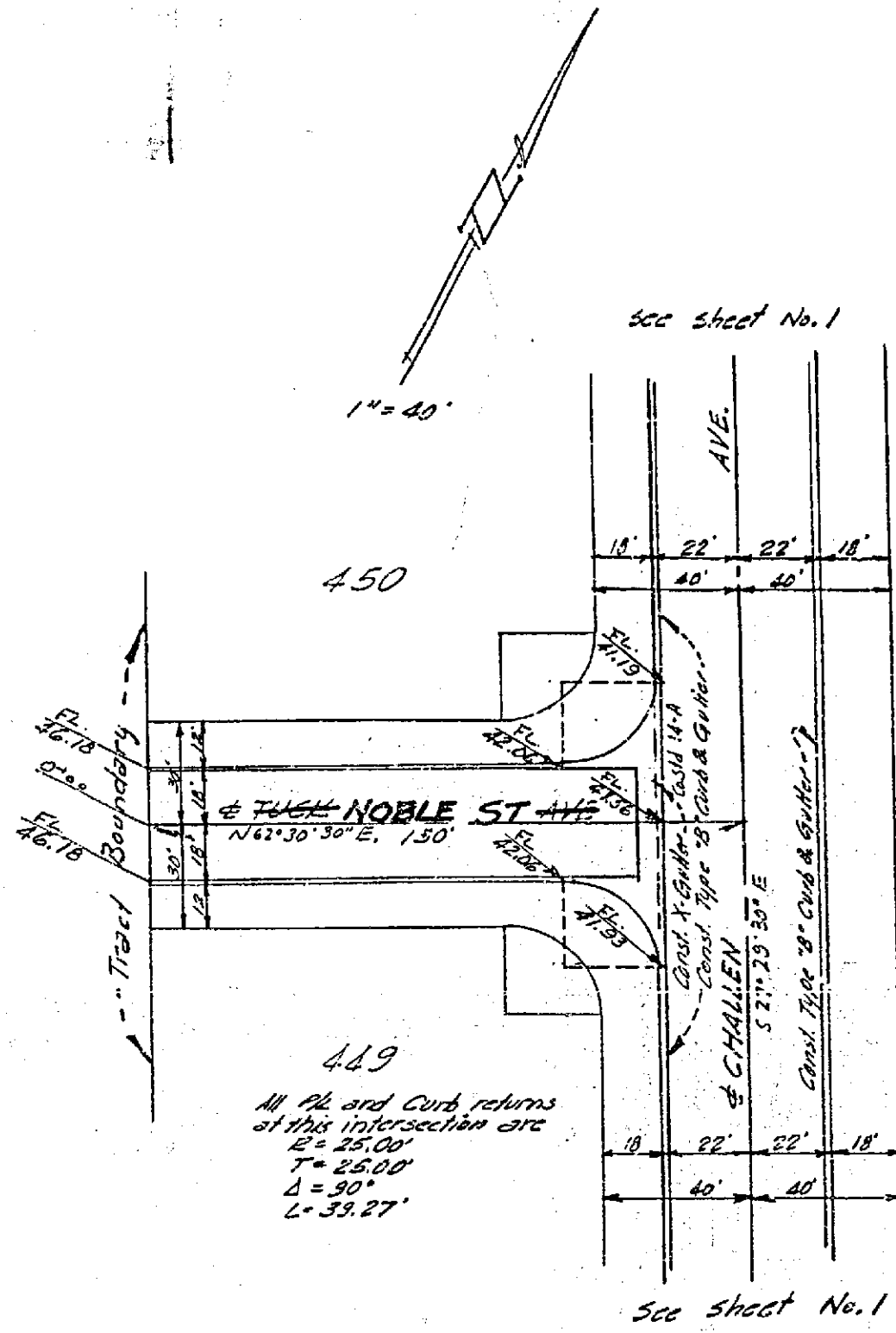
731-G  
 R-562



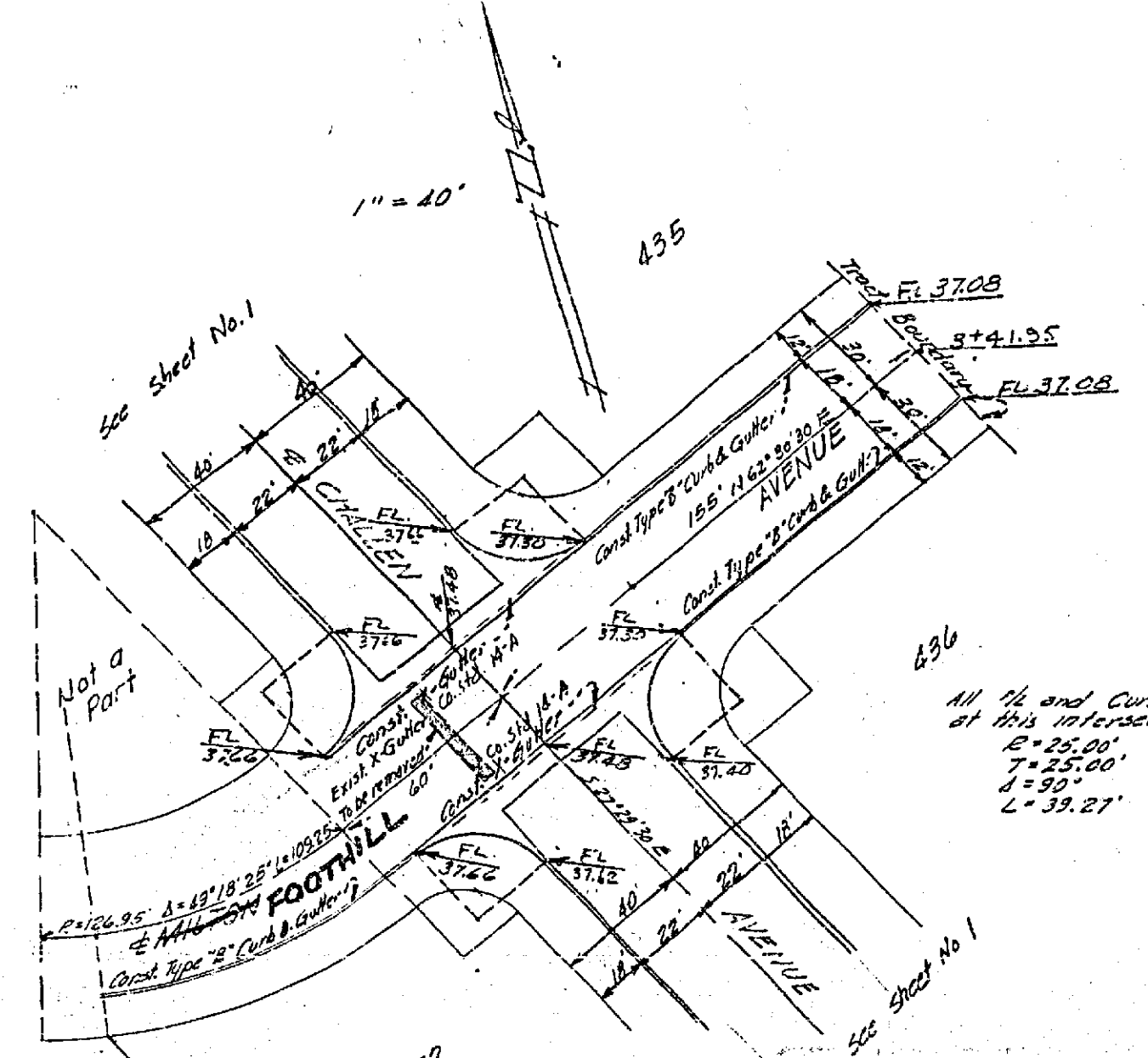


HURON AVENUE

INDEX MAP ON SHEET 3



NOBLE ST  
TUCK AVENUE

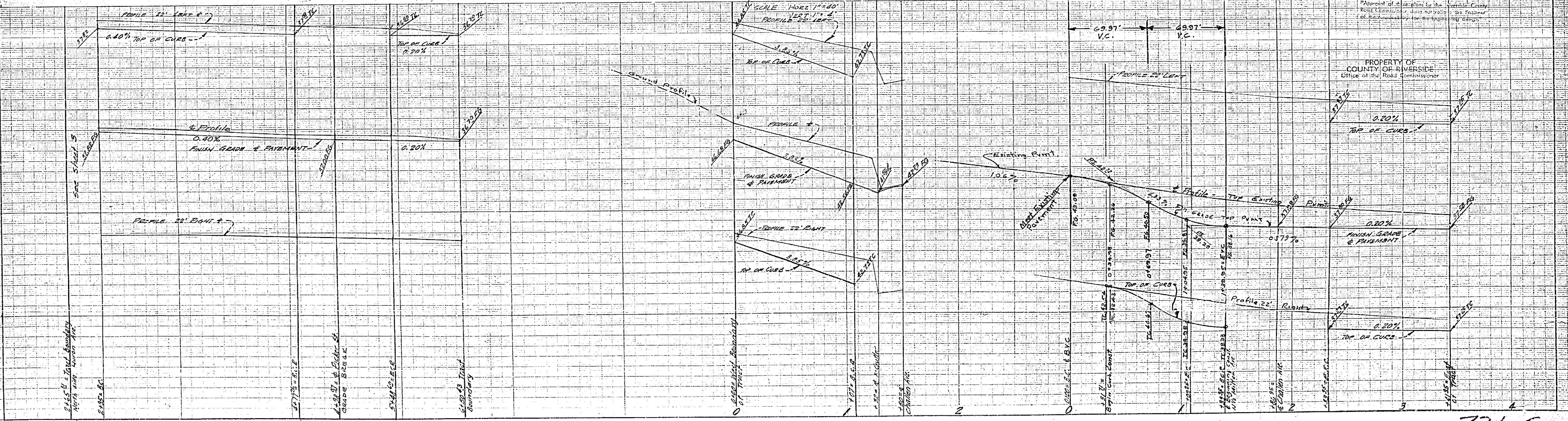


FOOTHILL  
MILTON AVE

File No.	SIERRA FOOTHILLS UNIT NO. 8
Drawn By	NOBLE FOOTHILL
Checked By	HURON, TUCK & MILTON AVE.
Approved	STREET PLANS AND PROFILES
Approved By	W. E. Maxwell
Specimen No.	LLS 2788
Scale	HORIZ. 1" = 40', VERT. 1" = 2'

B.M. = Spk. in RR. N.W. Cor. of  
Challen & Milton.  
Elev. 742.15

Approved By *S. J. ...* Oct 14, 1953  
for Road Commissioner, Riverside County



PROPERTY OF  
COUNTY OF RIVERSIDE  
Office of the Road Commissioner

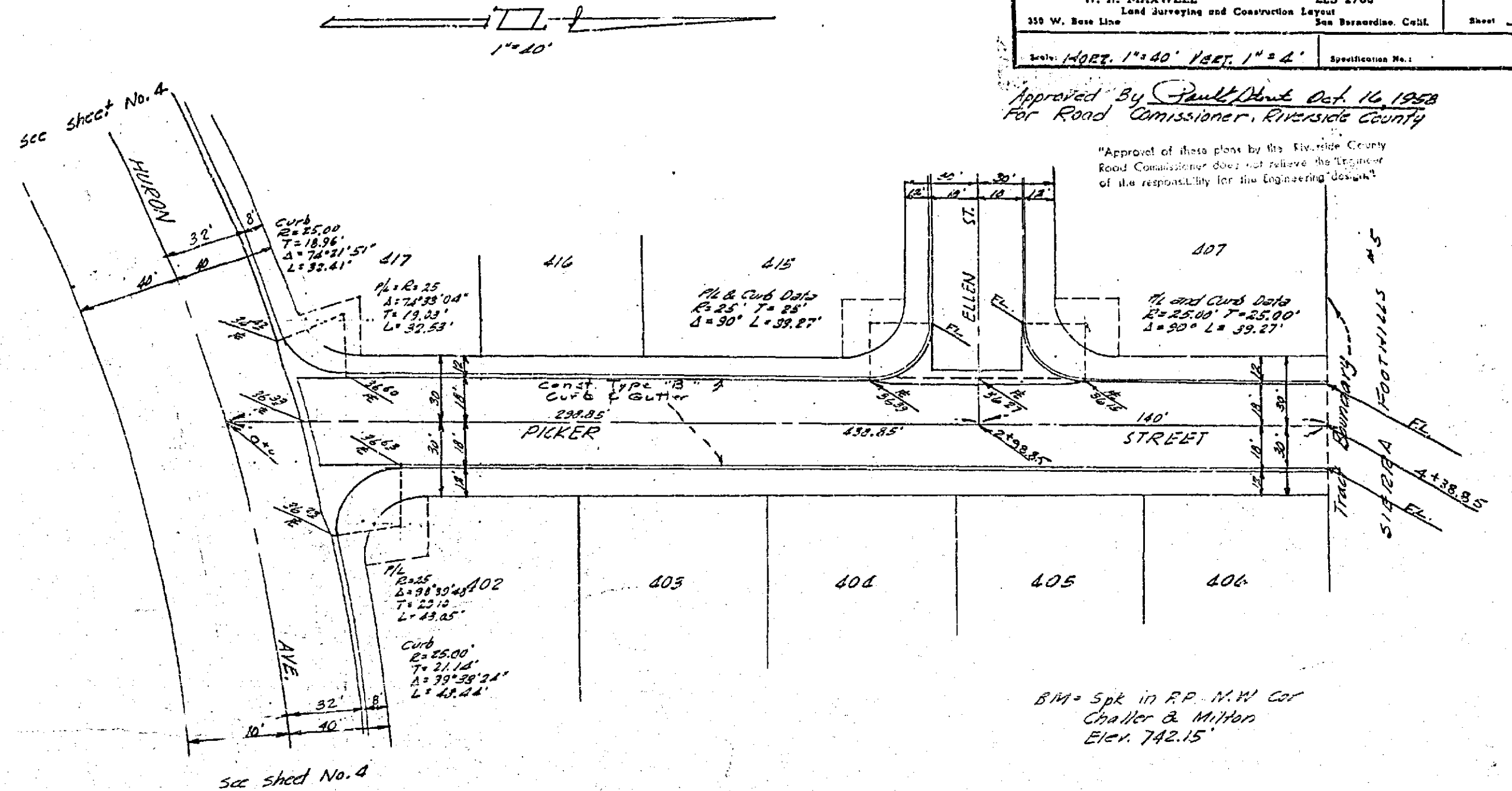
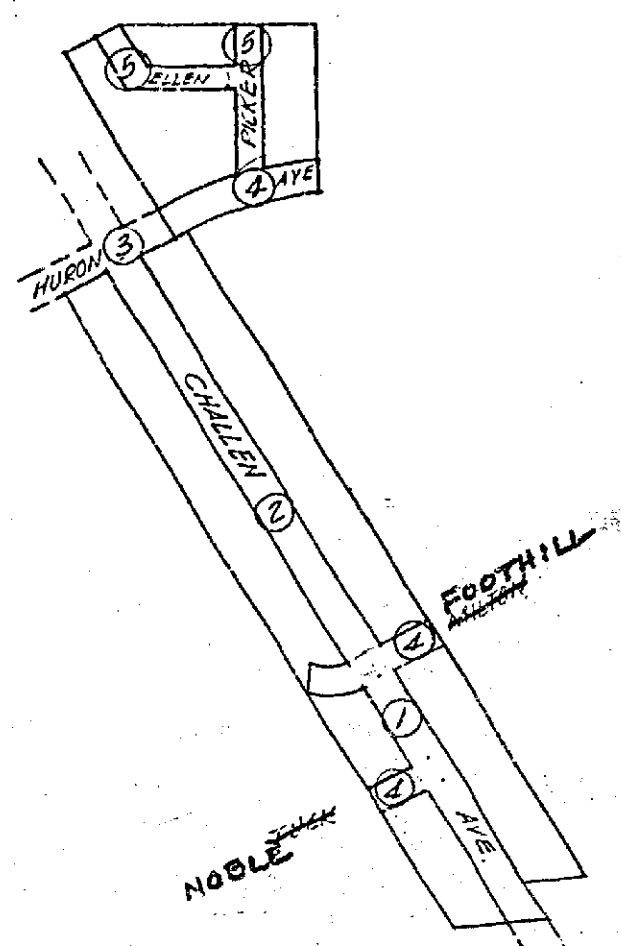
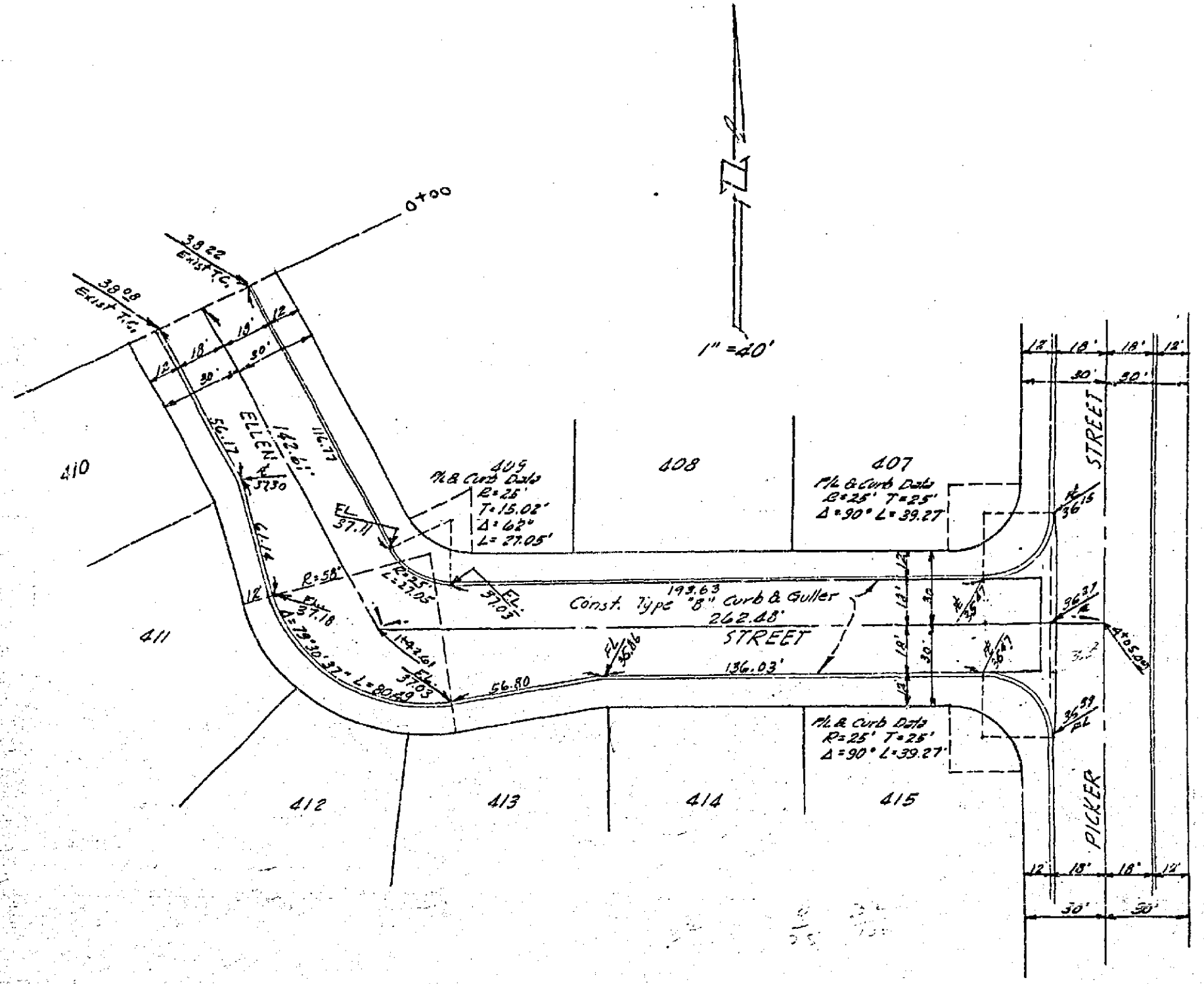
731-G  
R-562



File No.	SIERRA FOOTHILLS UNIT NO. 8
Drawn By	ELLEN STREET & PICKER STREET
Checked By	STREET PLAN AND PROFILE
Approval Recommended	RE 4562
Drawn No.	LLS 2782
Lead Surveying and Construction Layout	See Record Book
Sheet	3 of 5
Scale	HORIZ. 1" = 40' VERT. 1" = 4'

Approved By *Paul D. Dink* Oct. 16, 1928  
 Commissioner, Riverside County

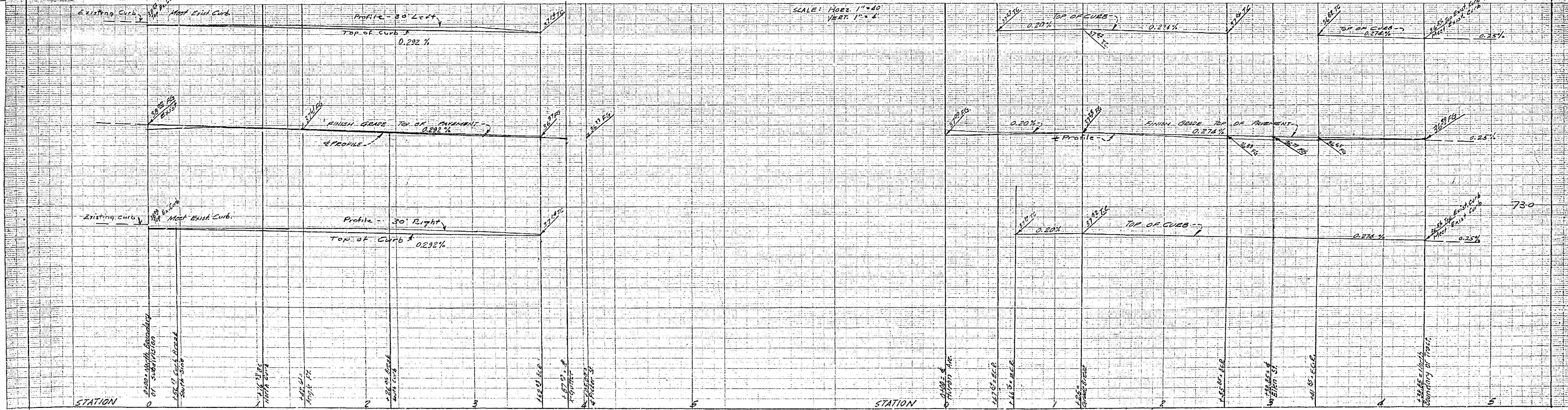
"Approval of these plans by the Riverside County Road Commissioner does not relieve the Engineer of the responsibility for the engineering work."



ELLEN STREET

PICKER STREET

PROPERTY OF COUNTY OF RIVERSIDE  
 Office of the Road Commissioner



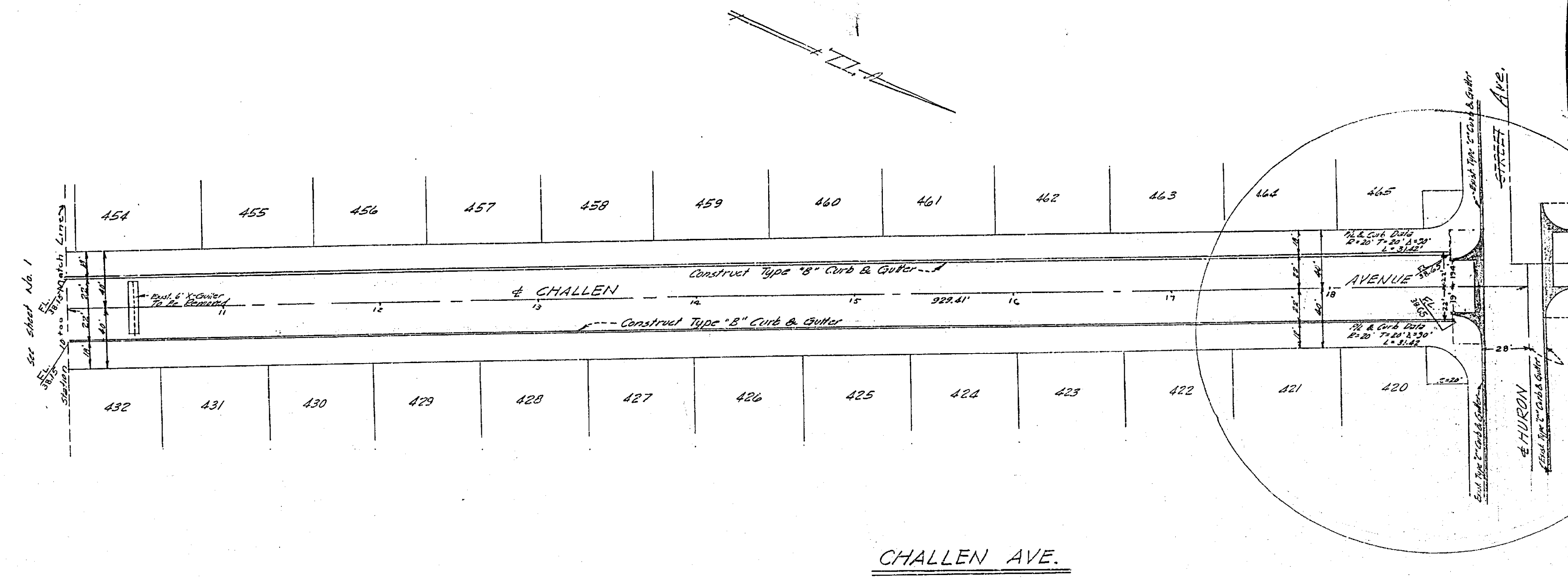
731-G  
 R-562



RD. 74	SIERRA FOOTHILLS UNIT NO. 3
Drawn By	CHALLEN AVE
Checked By	STREET PLANS AND PROFILES
Approved Recommended:	Approved: Date
W. R. Maxwell	W. R. Maxwell
315 W. Base Line	315 W. Base Line
Scale: HORIZ. 1"=40', VERT. 1"=4'	Sheet 2 of 5

Approved By *Paul H. ...* Oct. 16, 1928  
 for Road Commissioner, Riverside County.

\*Approval of these plans by the Riverside County Board of Commissioners does not relieve the Engineer of the responsibility for the Engineering design.\*



SEE SHEET NO. 5 FOR INTERSECTION DETAIL.

SIERRA FOOTHILLS TR. NO. 2

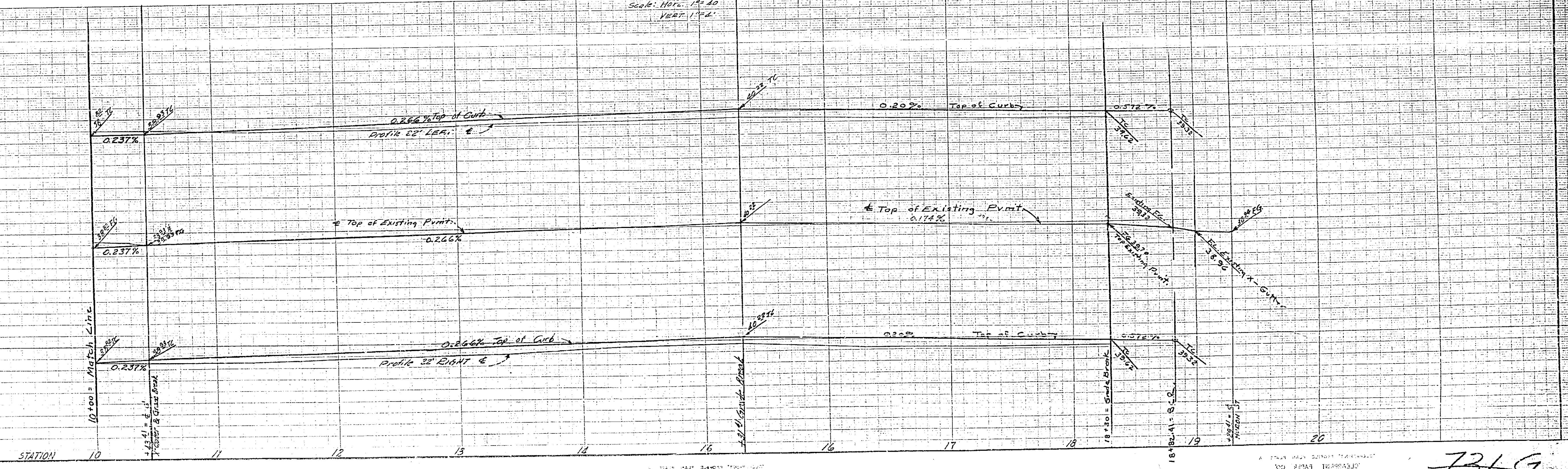
BM = Spk in P.P. N.W. Cor. Challen & Milton Elev = 742.15'

PROPERTY OF COUNTY OF RIVERSIDE Office of the Road Commissioner

INDEX MAP ON SHEET 3

See Sheet 1 for Typical Sections, Bench Mark and Notes.

Scale: HORIZ. 1"=40' VERT. 1"=4'



731-G  
R-562