

SIERRA HIGHLANDS TRACT
STREET GRADES
NOBLE STREET
ENGR- STEWART & MAXWELL
SAN BERNARDINO, CALIF.
OCTOBER 1954

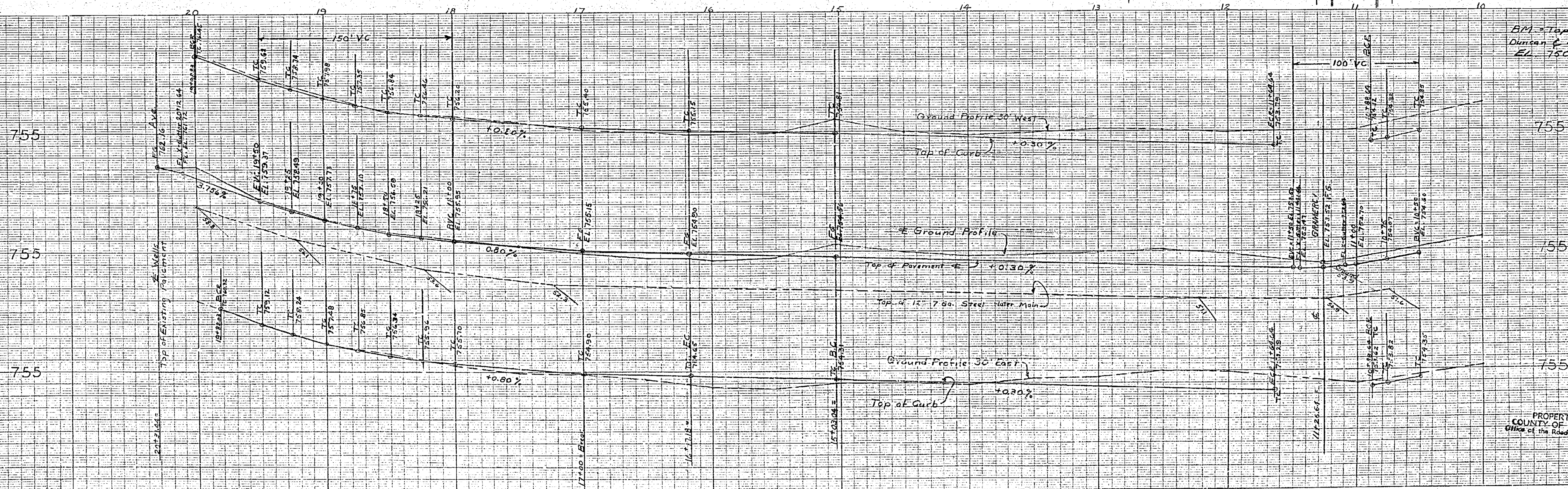
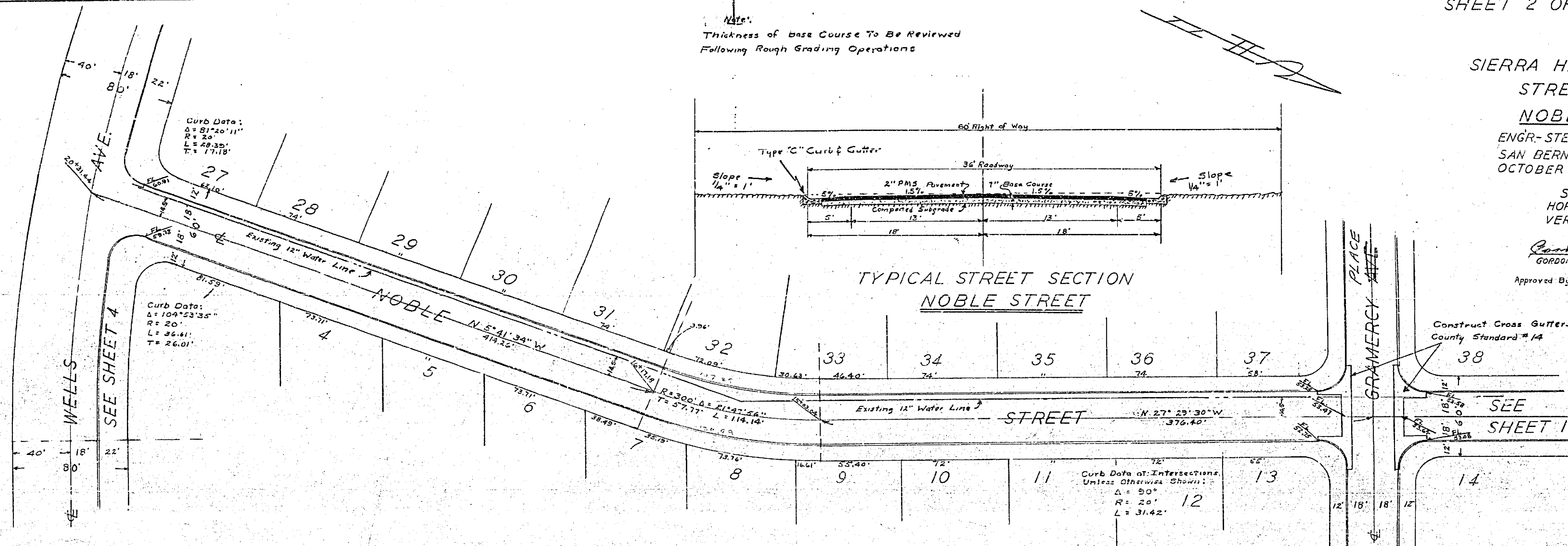
SCALE
HOR 1"=40'
VERT 1"=4'

Robert Stewart
GORDON STEWART RE 2047
Approved By *B.D. Powell* 11-17-54
For Road Commissioner
Pittsburg County

Construct Cross Gutters
County Standard # 14

SEE SHEET 1

Note:
Thickness of base Course To Be Reviewed
Following Rough Grading Operations

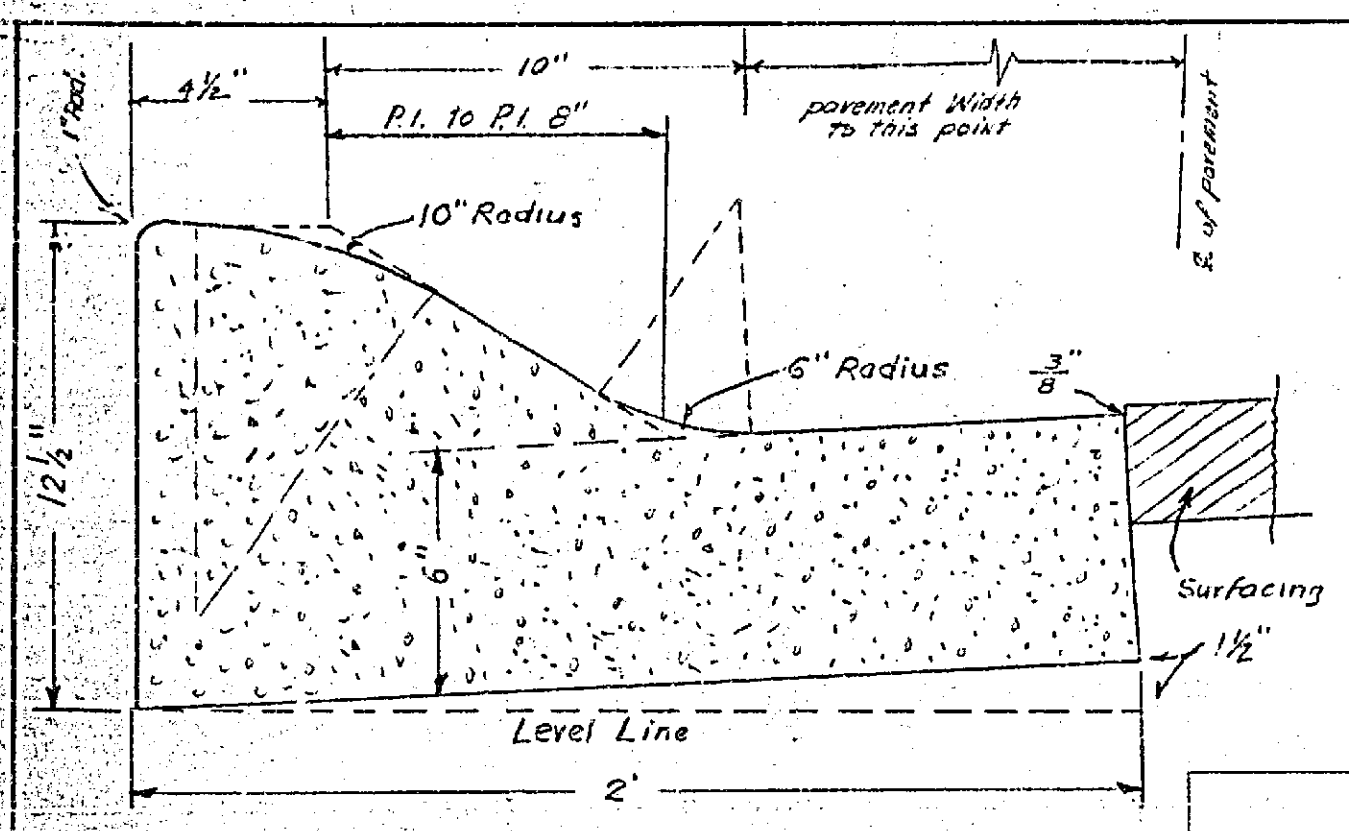


B.M. - Top of FH. N.W. Cor. of
Duncan & Highland Aves
EL. 750.79

PROPERTY OF
COUNTY OF RIVERSIDE
Office of the Road Commissioner

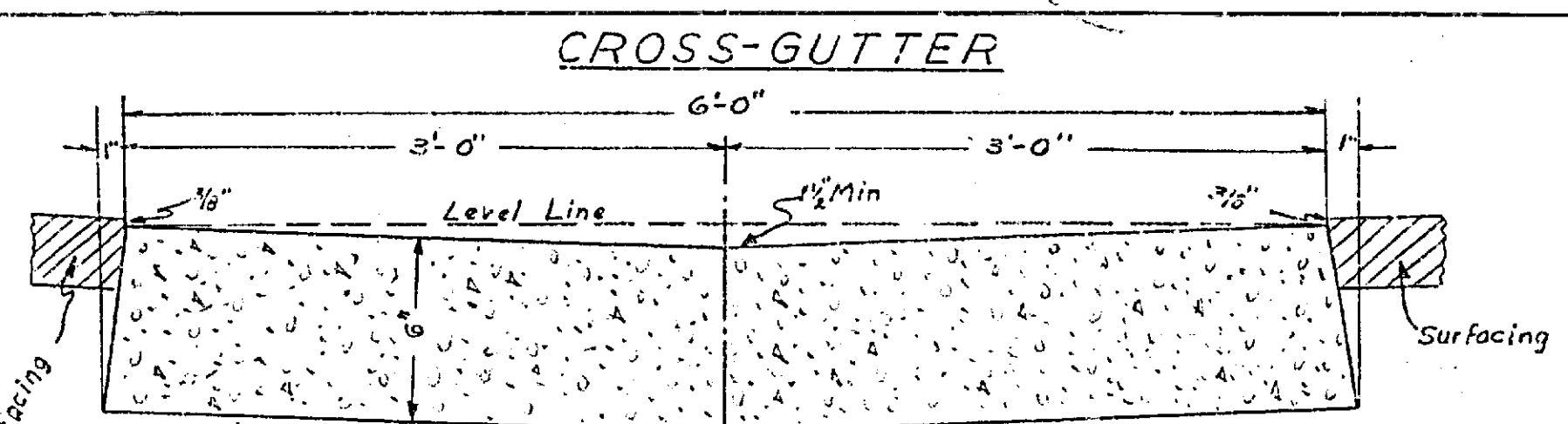
SIERRA HIGHLANDS TRACT
STREET GRADES
GRAMERCY AVENUE

Gordon Stewart
GORDON STEWART RE 2047
ENGR. - STEWART & MAXWELL
SAN BERNARDINO, CALIF.
OCTOBER 1954
SCALE:
HOR. 1" = 40'
VERT. 1" = 4'

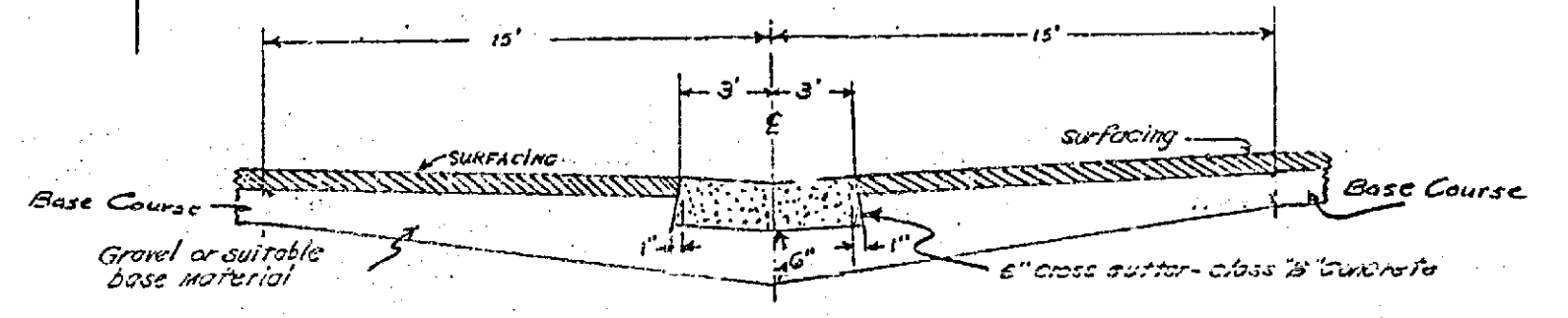


TYPE "C" CURB

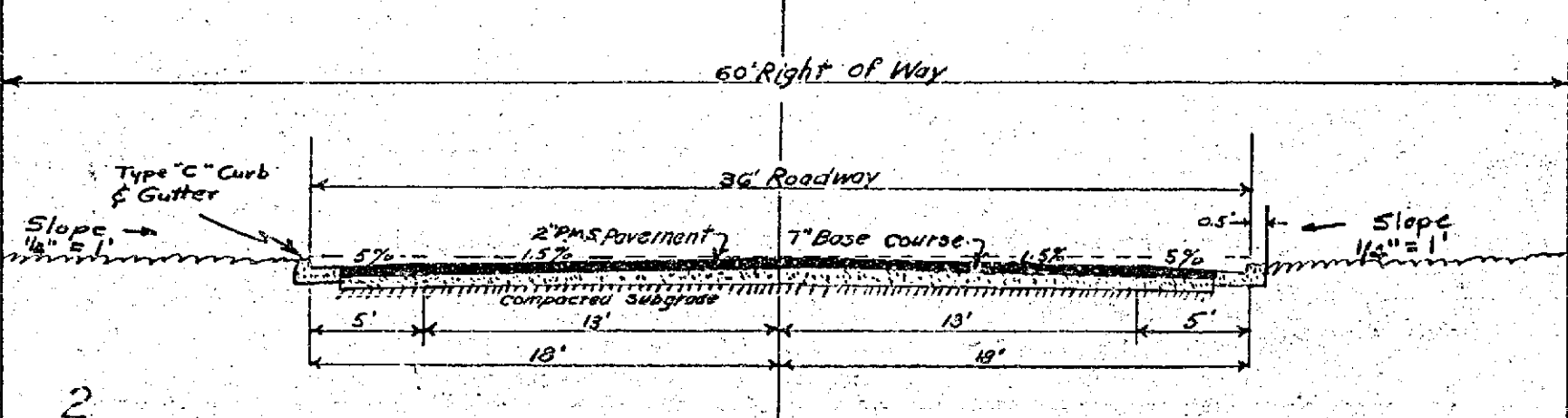
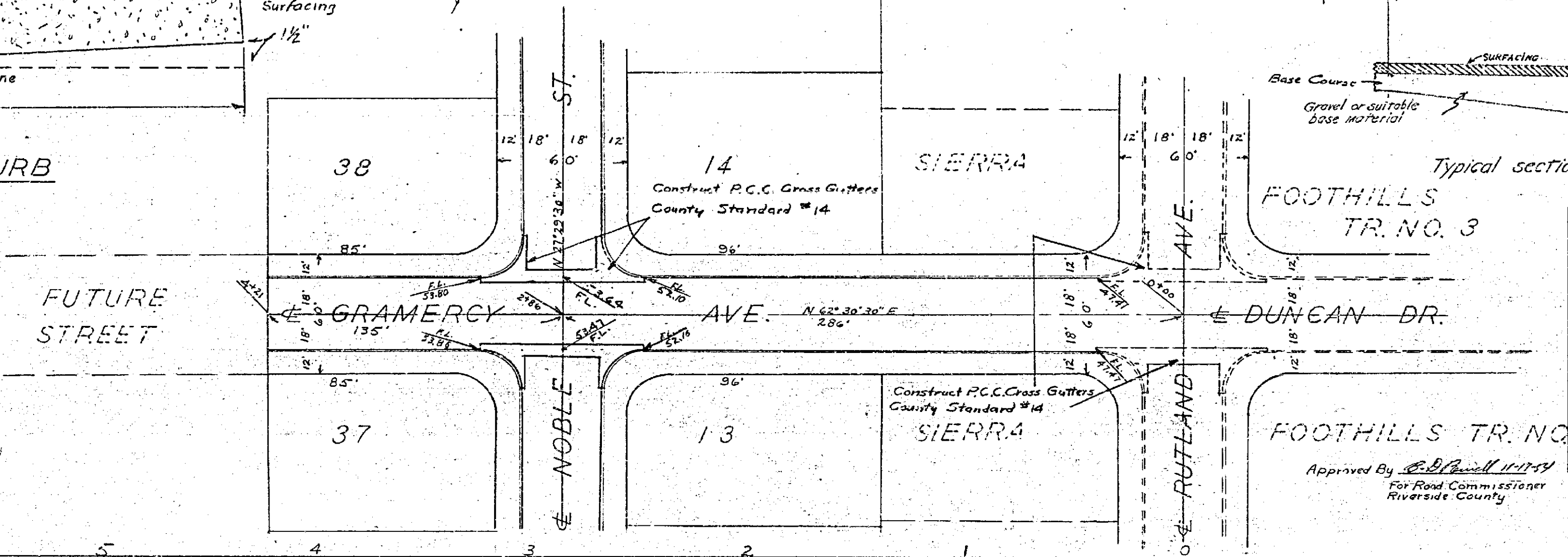
Curb Data at Intersections,
Unless Otherwise Shown:
a = 90°
r = 20'
L = 31+2'



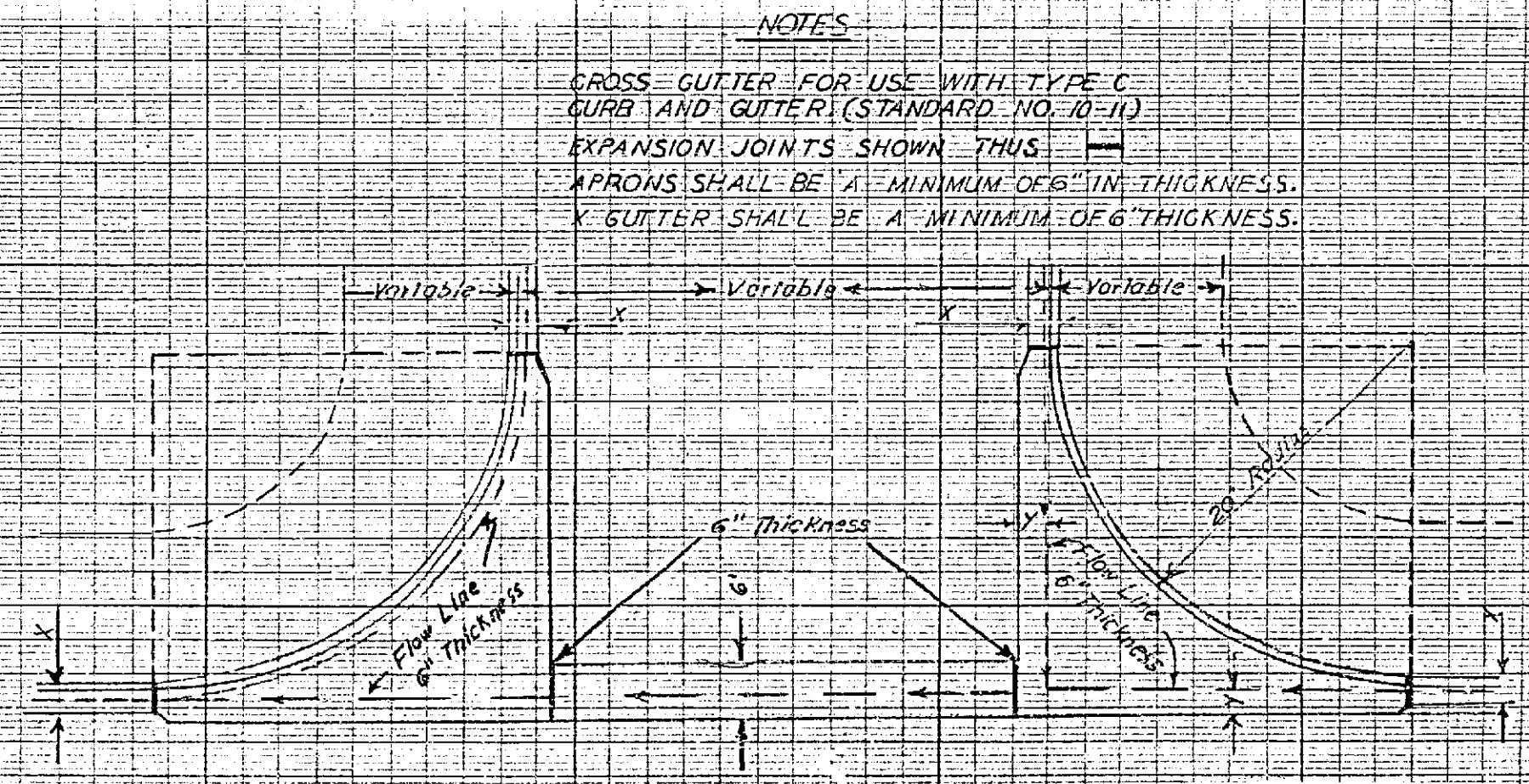
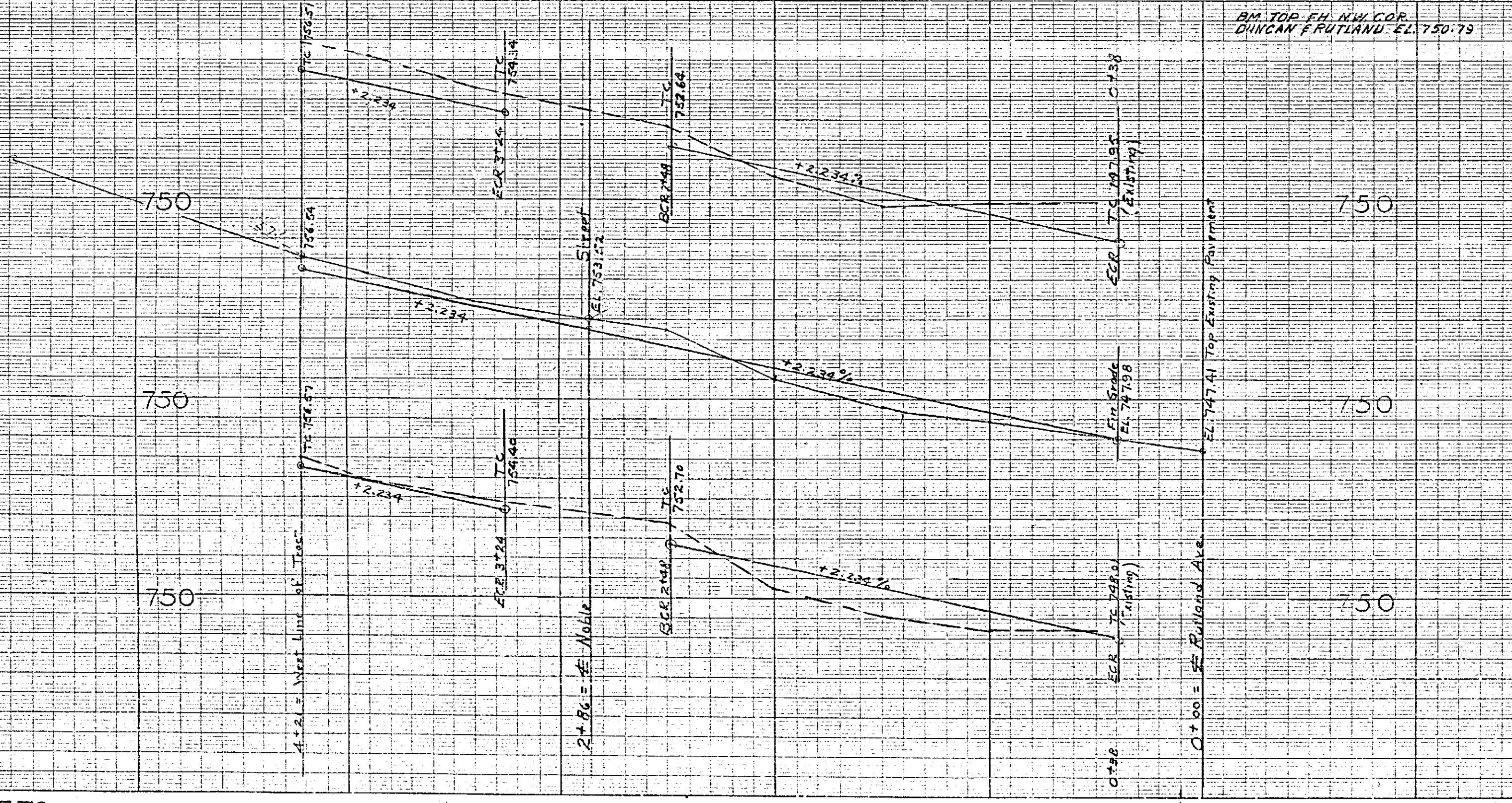
CROSS-GUTTER



Typical section through 6" cross-gutter



TYPICAL STREET SECTION
GRAMERCY AVE.



CROSS-GUTTER LAYOUT
COUNTY STANDARD # 14

NOTES
CROSS-GUTTER FOR USE WITH TYPE C
CURB AND GUTTER (STANDARD NO. 10-11)
EXPANSION JOINTS SHOWN THUS
EXPANSIONS SHALL BE A MINIMUM OF 6" IN THICKNESS.
GUTTER SHALL BE A MINIMUM OF 6" THICKNESS.

PROPERTY OF
COUNTY OF RIVERSIDE
Office of the Road Commissioner

SHEET 1 OF 5 SHEETS

SHEET 1 OF 5 SHEETS

SIERRA HIGHLANDS TRACT
STREET GRADES
NOBLE STREET

ENGR. - STEWART & MAXWELL
SAN BERNARDINO, CALIF.
OCTOBER 1954

SCALE
HOR 1" = 40'
VERT 1" = 4'

Gordon Stewart
GORDON STEWART RE 2047

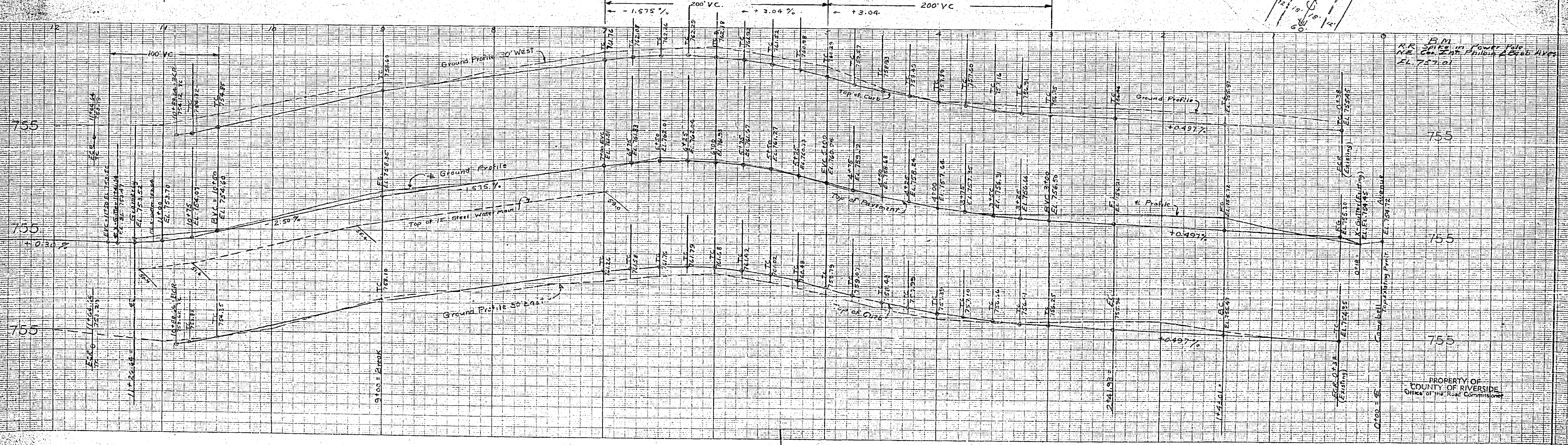
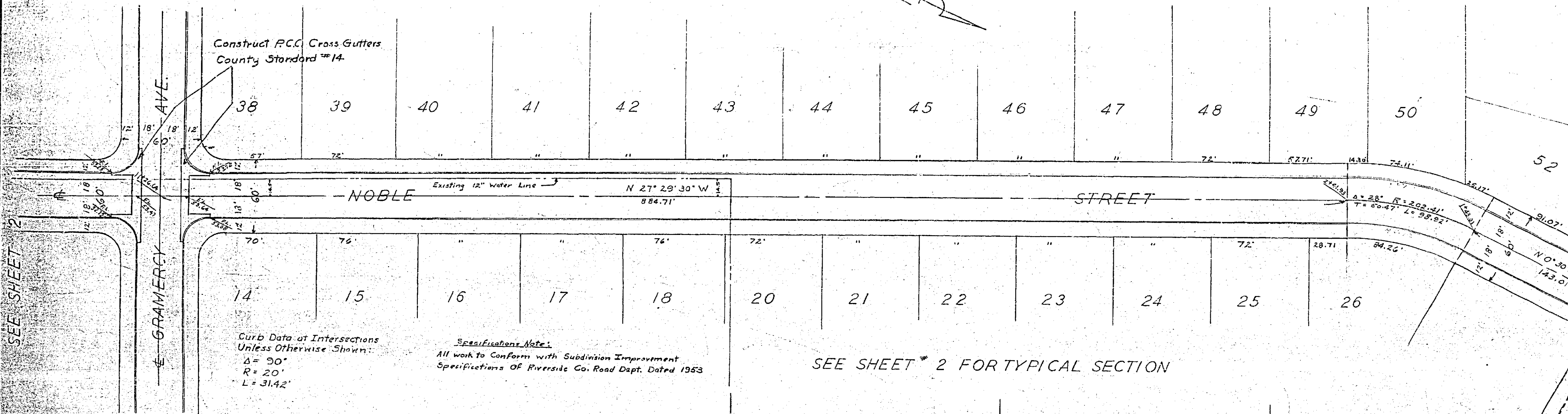
Approved By: *[Signature]*
For Road Commissioner
Riverside County

Construct P.C.C. Cross Gutters
County Standard #14.

Curb Data at Intersections
Unless Otherwise Shown:
 $\Delta = 90^\circ$
 $R = 20'$
 $L = 31.42'$

Specifications Note:
All work to Conform with Subdivision Improvement
Specifications Of Riverside Co. Road Dept. Dated 1953

SEE SHEET # 2 FOR TYPICAL SECTION



PROPERTY OF
COUNTY OF RIVERSIDE
Office of the Road Commissioner

R-565 713 R

SIERRA FOOTHILLS TR. NO. 3

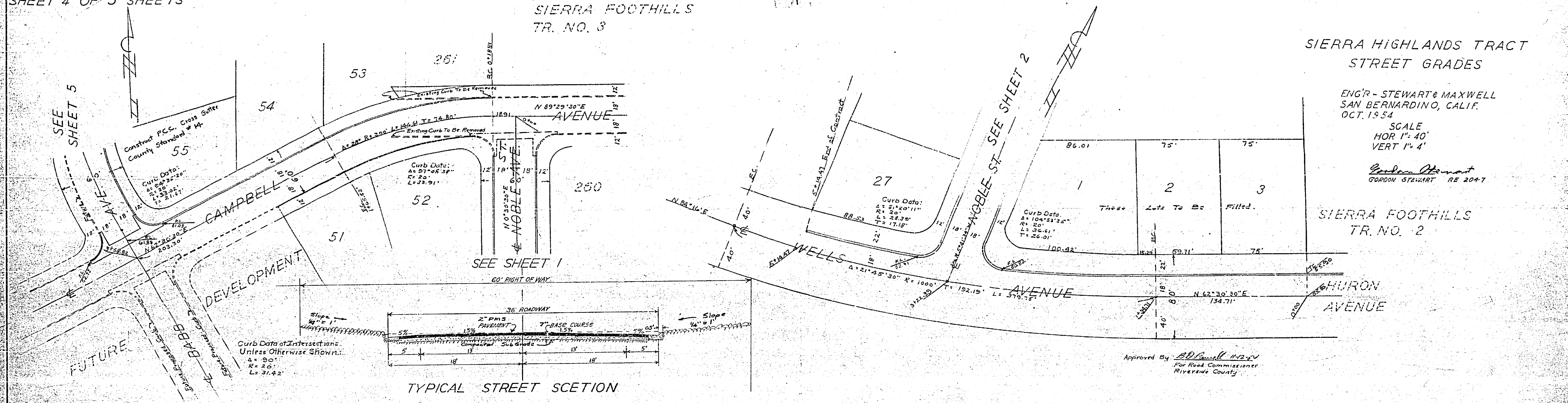
SIERRA HIGHLANDS TRACT STREET GRADES

ENGR - STEWART & MAXWELL
SAN BERNARDINO, CALIF.
OCT. 1954

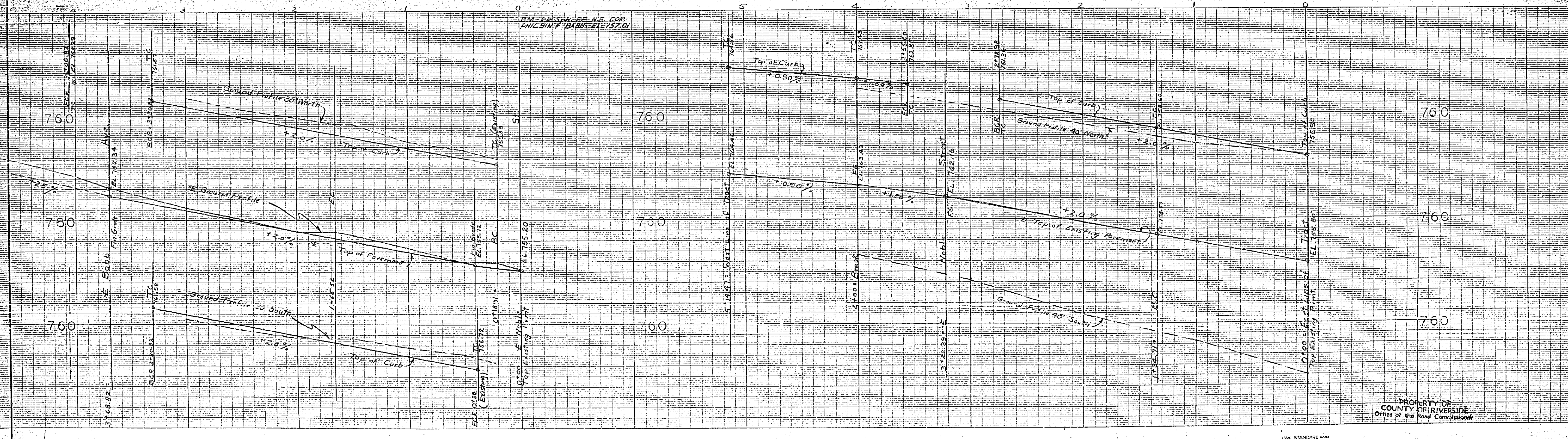
SCALE
HOR 1" = 40'
VERT 1" = 4'

Gordon Stewart
GORDON STEWART RE 2047

SIERRA FOOTHILLS TR. NO. 2



Approved By *R.D. Powell* 11-2-54
For Road Commissioner
Riverside County



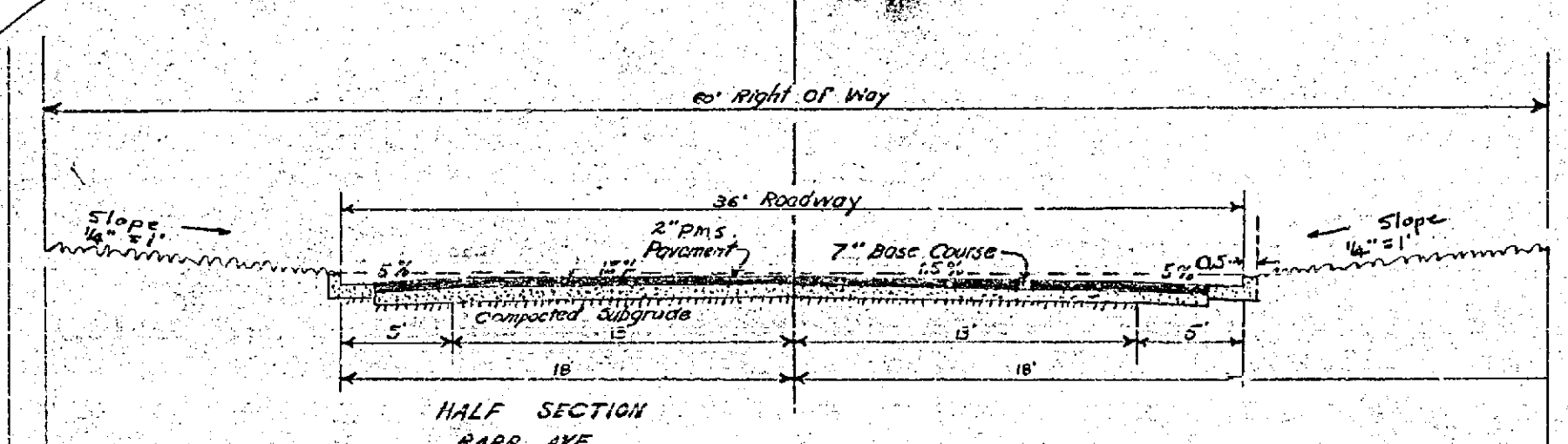
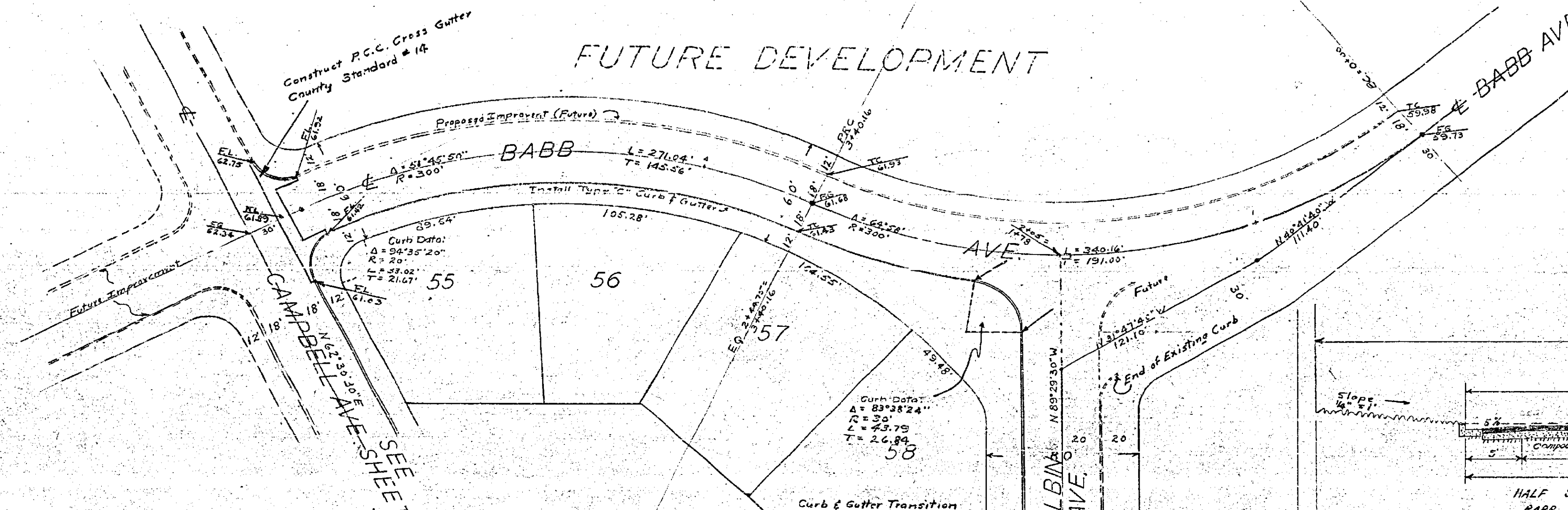
PROPERTY OF
COUNTY OF RIVERSIDE
Office of the Road Commissioner

R-565 715-K

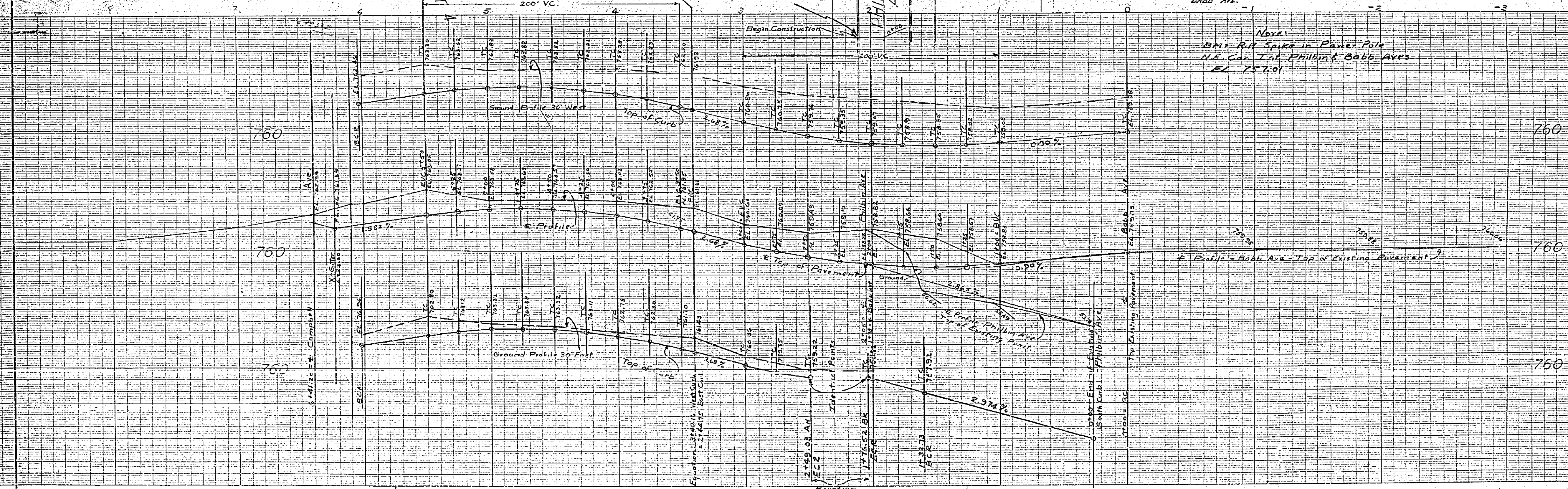
SIERRA HIGHLANDS TRACT
STREET GRADES

BABB AVE.
ENGR. STEWART & MAXWELL
SAN BERNARDINO, CALIF.
OCTOBER 1954
SCALE:
HOR. 1" = 40'
VERT. 1" = 4'

Gordon Stewart
GORDON STEWART RE 2047
Approved By R. D. Caswell 11-17-54
For Road Commissioner
Riverside County



NOTE:
B.M. R/R Spike in Power Pole
N.E. Cor. Int. Philbin & Babb Aves.
EL. 757.01



PROPERTY OF
COUNTY OF RIVERSIDE
Office of the Road Commissioner

R-565

413-K