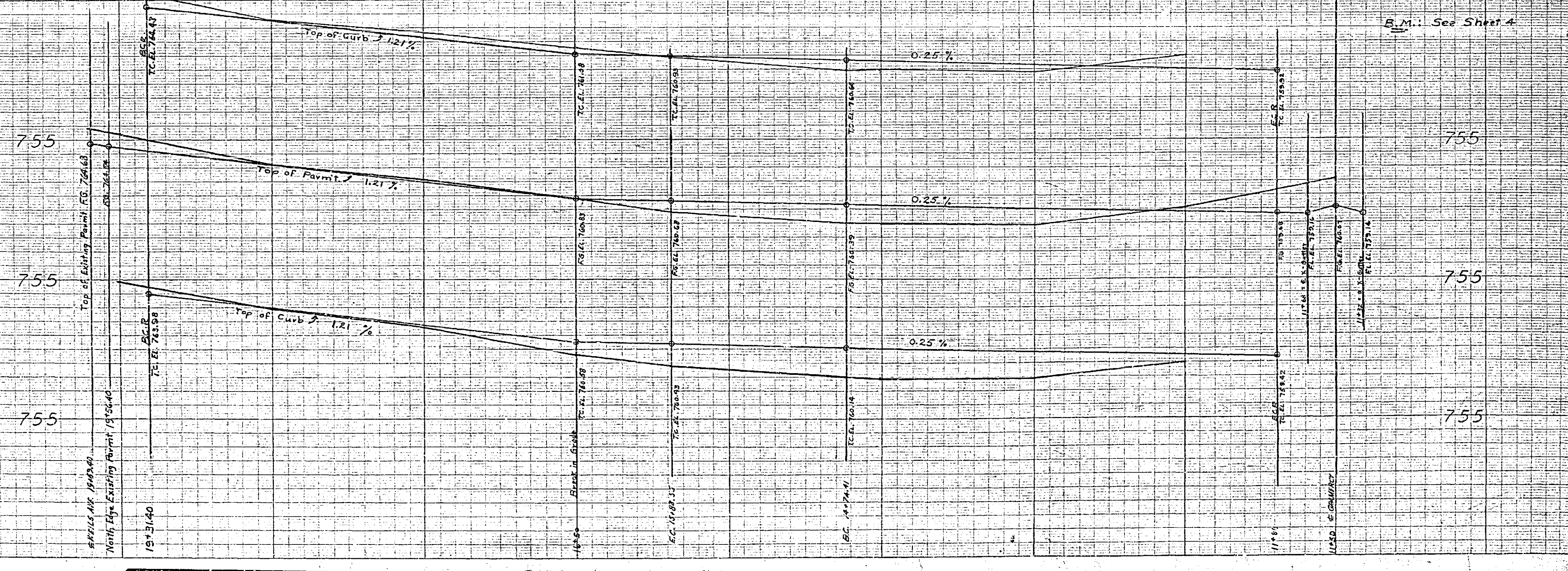
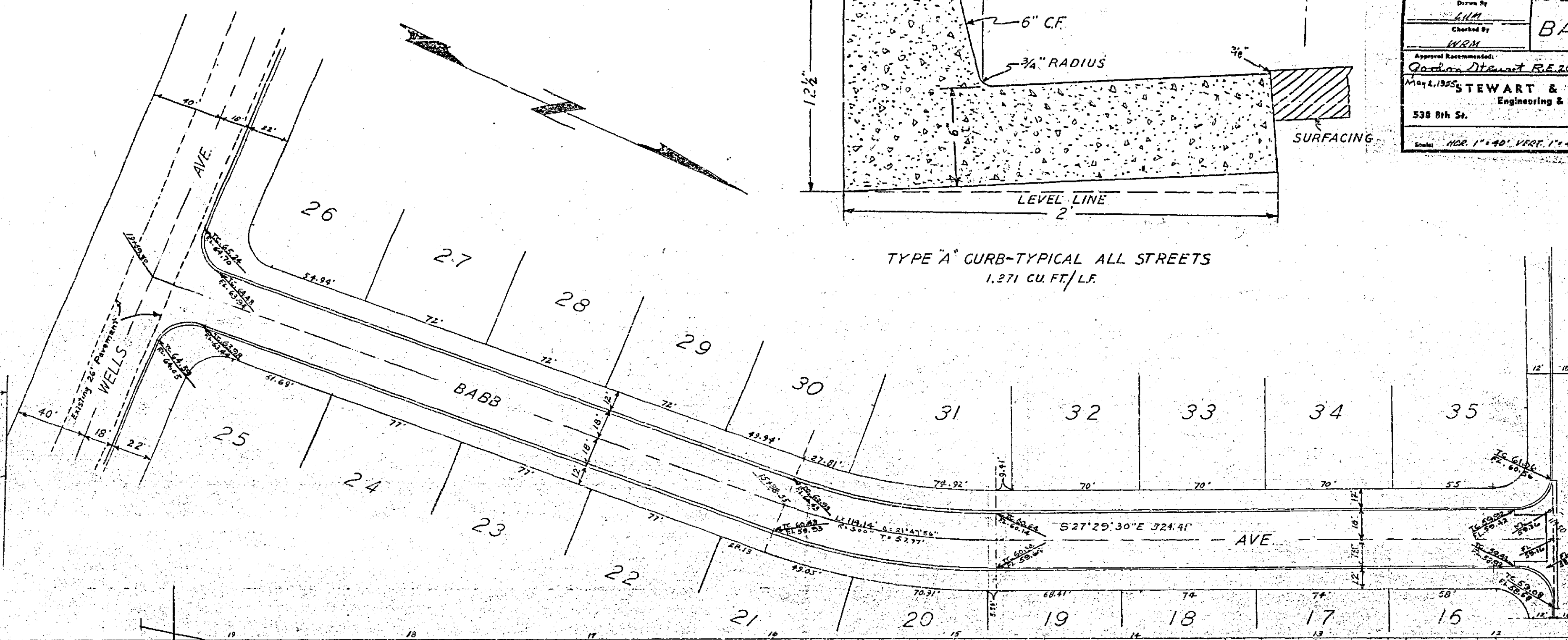


File No.	SIERRA HIGHLANDS # 2
Drawn By	E. L. M.
Checked By	K. R. M.
Approval	Approved
Garland Stewart RE 2047	W. D. H. Stewart P. C. 6210
STEWART & MAXWELL	Engineering & Surveying
538 8th St.	San Bernardino, Calif.
Scale: HOR. 1" = 40' VERT. 1" = 4'	Sheet 2 of 4



PROPERTY OF  
COUNTY OF RIVERSIDE  
Office of the Road Commissioner  
# 396

KUFFEL & BEESER CO.  
NEW YORK

THIS STANDARD  
PROFILE PLATE A 4 X 20  
TRAFFIC

THIS STANDARD  
PROFILE PLATE A 4 X 20  
TRAFFIC

KUFFEL & BEESER CO.  
NEW YORK

R-566 413





SIERRA HIGHLANDS #2	
BABB AVE. PROFILES	
Drawn By <i>LJM</i>	Checked By <i>WES</i>
Approved <i>Gordon Stewart</i> RE 2047	Date 5-27-55
STEWART & MAXWELL Engineering & Surveying 538 8th St. San Bernardino, Calif.	
Scale HOR. 1" = 40' VERT. 1" = 4'	Sheet 1 of 4

