

Note: The contractor is required to take due precautionary measures to protect the utilities or structures at the site. It shall be the contractor's responsibility to notify the owners of the utilities or structures concerned before starting work.

Note - For Street Name Sign Schedule - See Sheet No 2

PLAN  
Scale 1/4" = 50'-0"

- NOTES**
- All utilities to be installed in streets before placing any paving.
  - All work and materials shall comply with the Specifications No 461, Standards of the City of Riverside, Dept of Public Works.
  - If the subdividers desire to reduce the requirement for imported Base Material, additional soil tests may be taken at Subdividers expense after Streets are prepared to rough grade. Subdivider will contact Inspection Div. Dept. of Public Works before making tests. The City of Riverside will make a test of Base Material in place before paving can be installed; results of this test must indicate the Base Material is satisfactory to the Inspection Division.
  - Prime coat and joint binder will be required.

Revision No 1  
Plan R-575 revised by  
grade change 3/11/42 & 6/15  
added bumpouts at Jasmine St. JWA  
George O. Crawley  
Date: 4/16/42 R-575

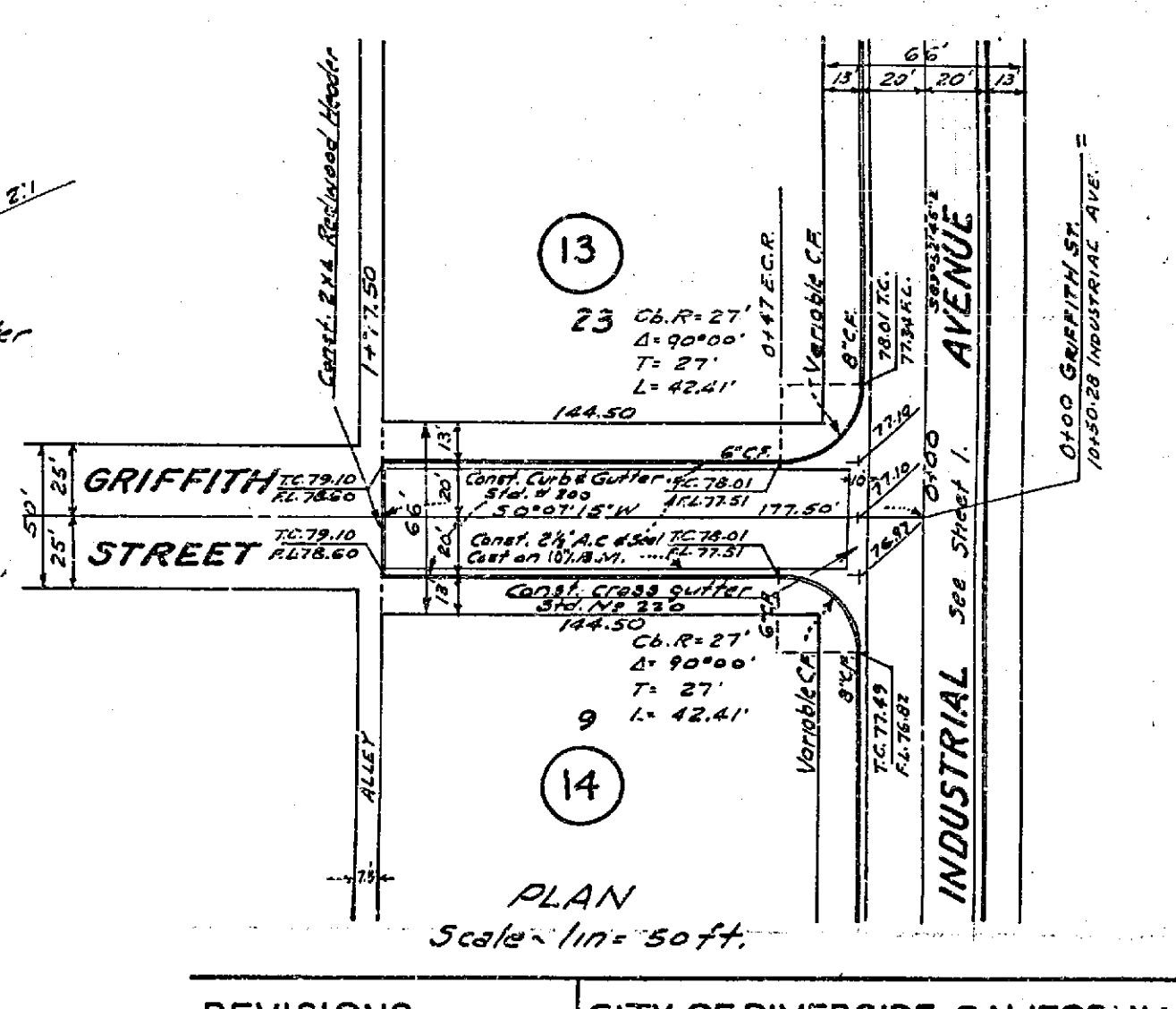
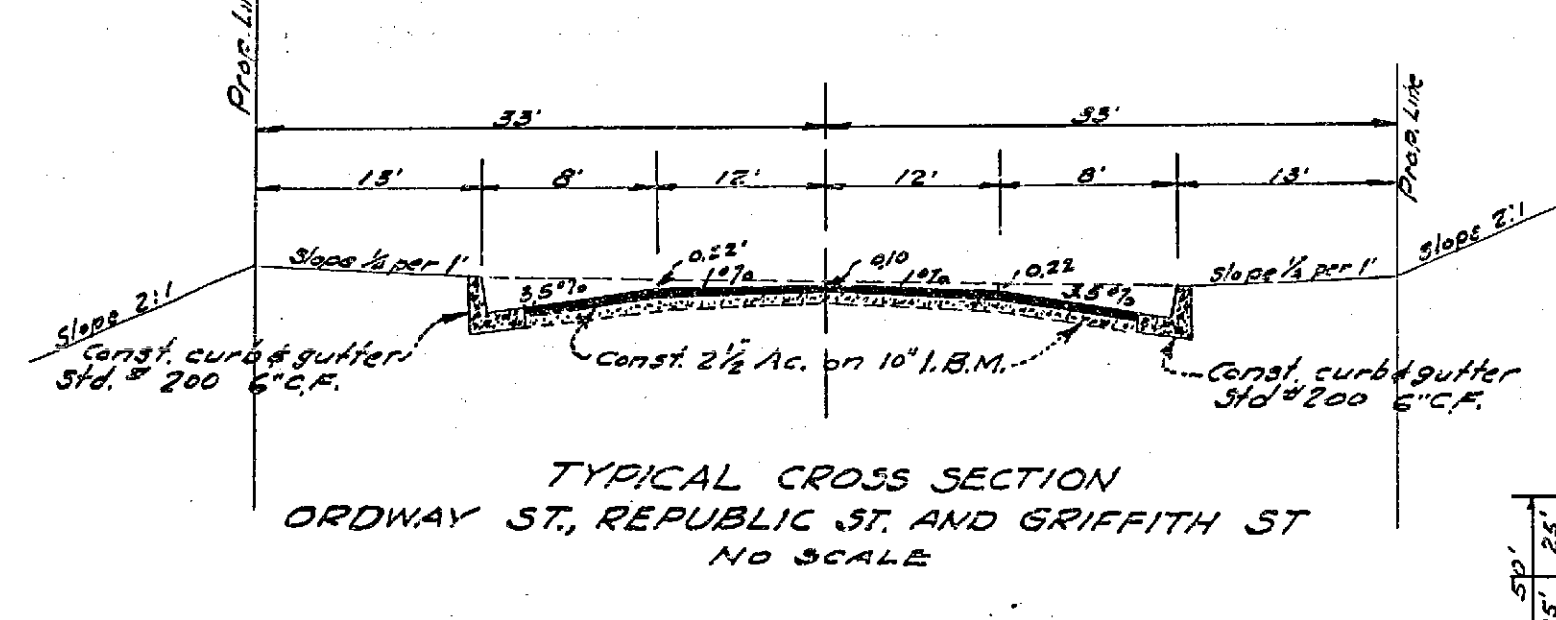
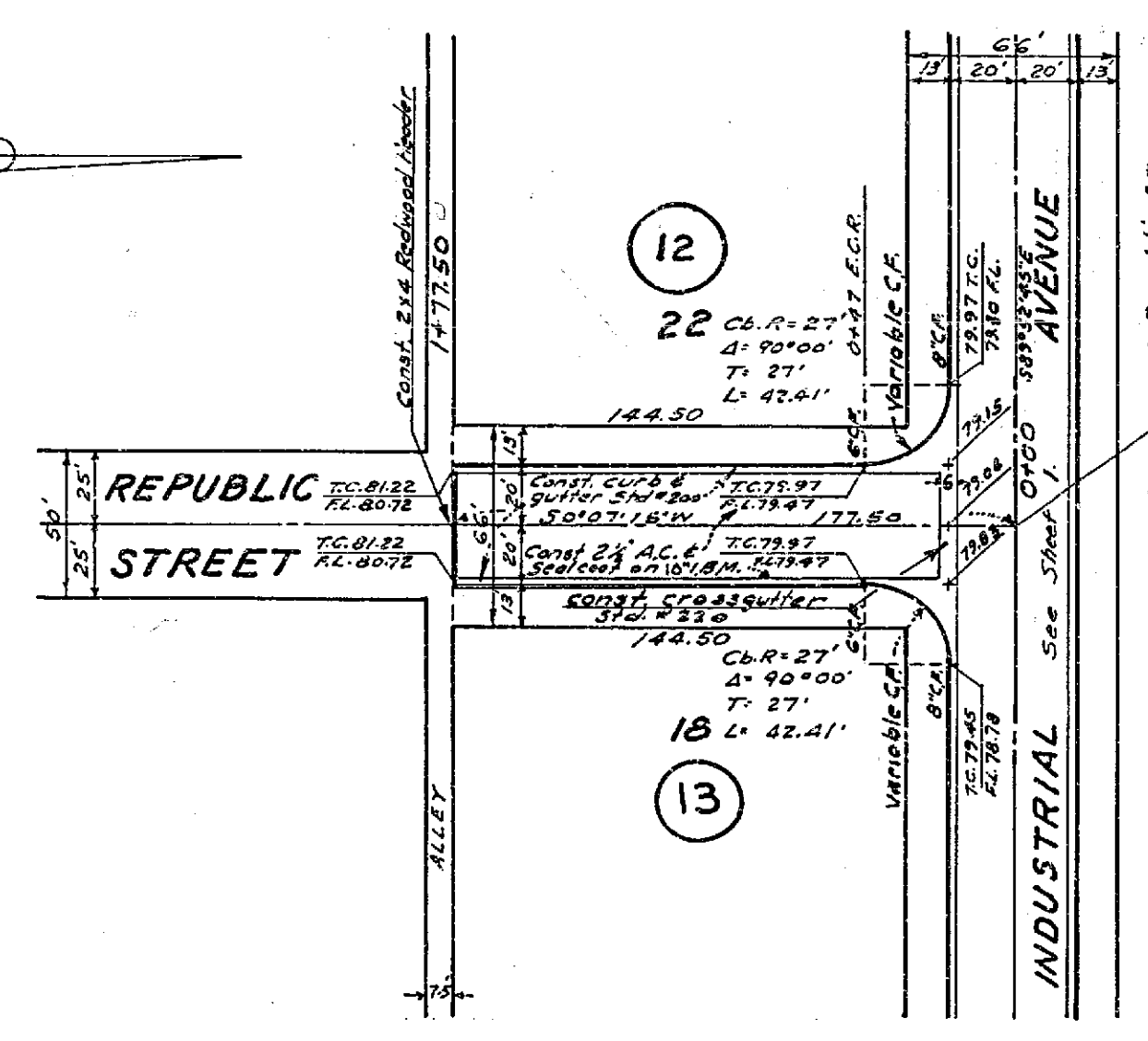
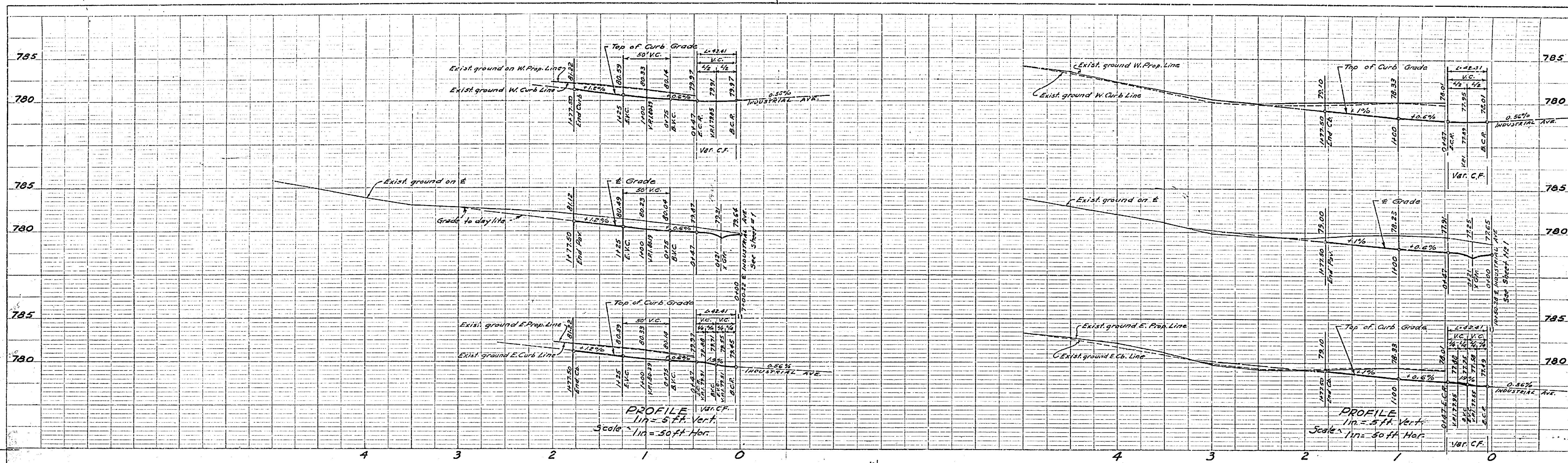
REVISIONS		CITY OF RIVERSIDE CALIFORNIA DEPARTMENT OF PUBLIC WORKS
MARK	DATE	
		<b>RECORD OF SURVEY 646 STREET PLAN AND PROFILE OF INDUSTRIAL AVE. - FREMONT ST. TO JASMINE ST.</b>
DESIGNED BY	CHECKED BY	
DRAWN BY	APPROVED BY	<b>R-575</b> SHEET 1 OF 3
RECOMMENDED BY	DATE	

PROFILE	DATE

PLAN	DATE

**McKee & Crawley**  
SURVEYORS AND ENGINEERS  
Riverside, California

Approved: *George O. Crawley* Field Bk. No. 9455 Date: 2-23-42



**STREET NAME SIGN SCHEDULE**

Letter	Street Name	Elevation
A	JASMINE ST.	5800
A	INDUSTRIAL AVE	6400
B	INDUSTRIAL AVE.	6300
B	ORDWAY ST.	5800
C	INDUSTRIAL AVE	5800
C	INDUSTRIAL AVE	6200
D	GRIFFITH ST.	5800
D	INDUSTRIAL AVE	6100
E	INDUSTRIAL AVE	6100
E	FREMONT ST.	5800

Note. 3- W531R (Not a Through Street) signs required as shown on sheet #1

PLAN Scale - 1 in = 50 ft.

B.M. & R. Spike in P. Pole # 15107-J N.E. Cor. Industrial Ave. & Fremont St. Elev. 777.10

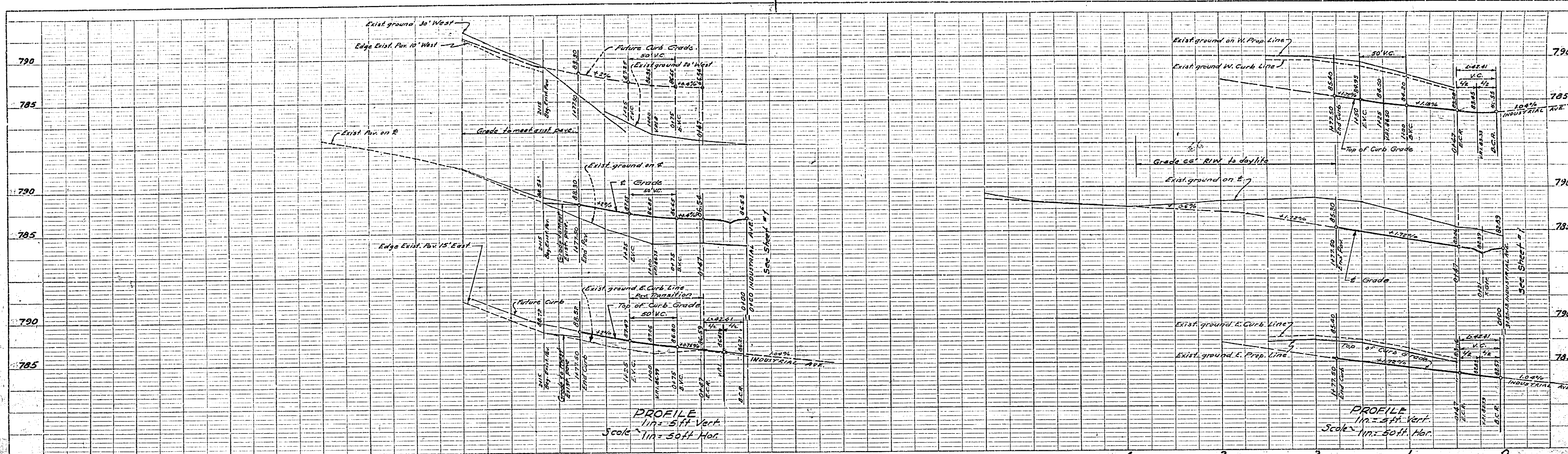
REVISIONS		CITY OF RIVERSIDE CALIFORNIA DEPARTMENT OF PUBLIC WORKS
NO.	DESCRIPTION	
		RECORD OF SURVEY 646 STREET PLANS AND PROFILES - GRIFFITH ST. AND REPUBLIC ST. INDUSTRIAL AVE SLY

**McKEE & CRAWLEY**  
SURVEYORS AND ENGINEERS  
Riverside, California

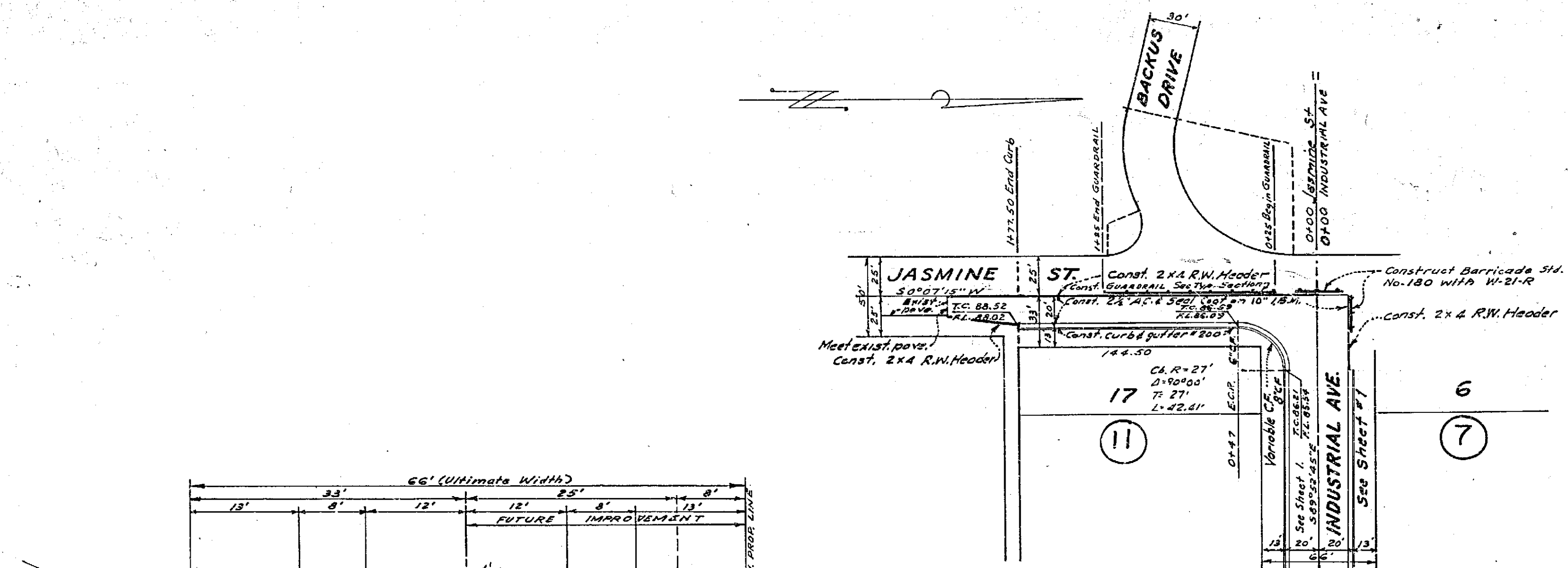
DESIGNED BY  
DRAWN BY  
RECOMMENDED BY  
ASSISTANT CITY ENGINEER

CHECKED BY D.R. ADD  
DIRECTOR OF PUBLIC WORKS  
APPROVED BY  
DATE 2-29-62

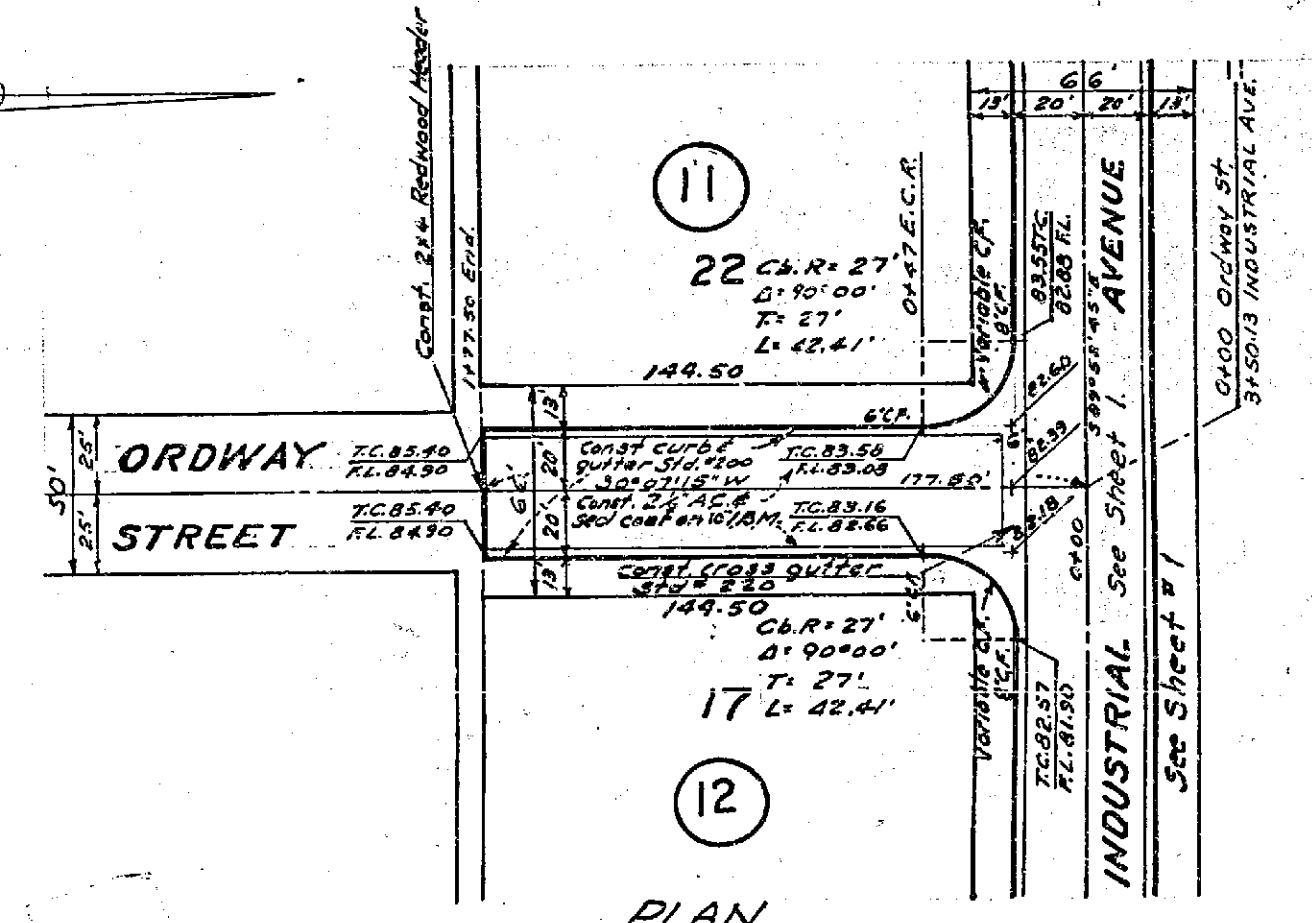
R-575  
SHEET 2 OF 3



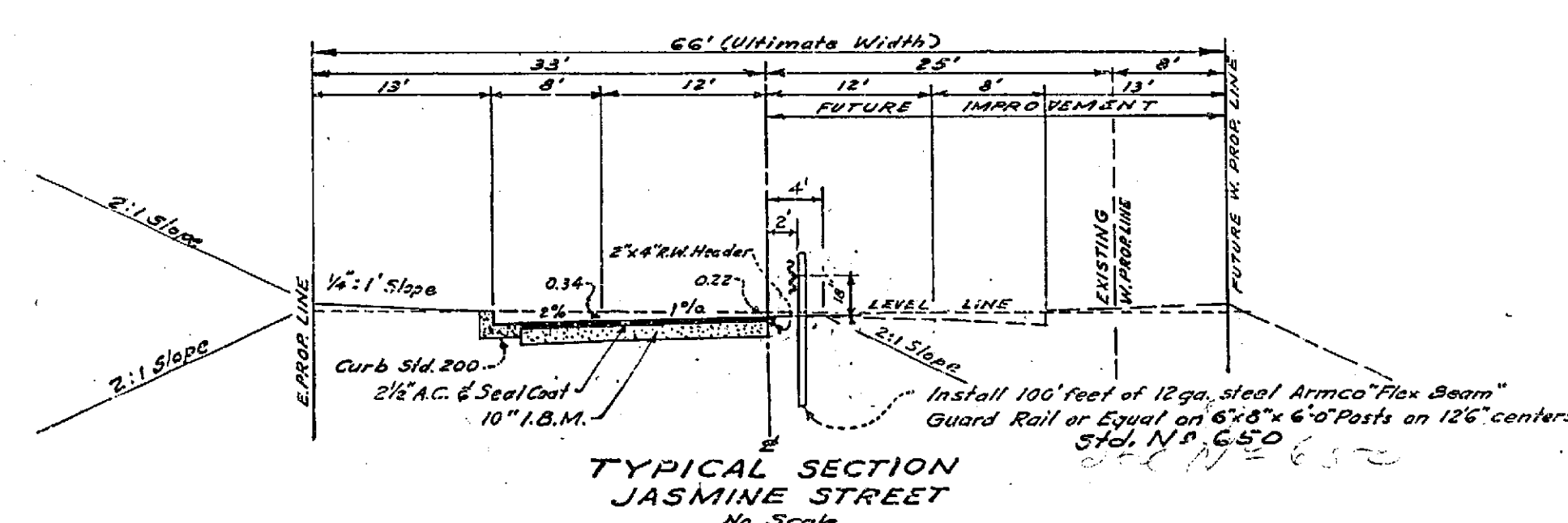
PROFILE  
 SCALE: 1" = 5' VERT.  
 1" = 50' HOR.



PLAN  
 Scale 1" = 50'



PLAN  
 Scale 1" = 50'



TYPICAL SECTION  
 JASMINE STREET  
 No Scale

B.M. R.R. Spike in P. Pole # 15107-J N.E. Cor.  
 Industrial Ave & Fremont St. Elev. 777.10

5-8-62 See Note at 1077.

RECORD OF SURVEY 646  
 STREET PLANS AND  
 PROFILES ORDWAY ST.  
 AND JASMINE ST. FROM  
 INDUSTRIAL AVE. SLY

Revision NPI Approved  
 Director of Public Works

Revision NPI  
 Plan R-575 revised by grade change  
 0150 to 1177.50 on Ordway St & Jasmine St and  
 Jasmine cross section.  
 George O. Crawley  
 Date 5-8-62. R.C. 2453 Approved.  
**McKee & Crawley**  
 SURVEYORS AND ENGINEERS  
 Riverside California  
 Approved George O. Crawley P.E. 9485 Date 2-7-62

ADD W.D.S.  
 O.R.B.  
 Michael

R-575  
 2-2-62