

FOR TYPICAL SECTION SEE SHEET NO. 4

This area to be filled and graded to grade and paved for final street paving with temporary connection.

NOT A PART

REVISIONS		
MARK	DATE	DESCRIPTION

DESIGNED BY: _____ CHECKED BY: *ASG* *12/25*
 DRAWN BY: _____
 RECOMMENDED BY: *ASG* ASSISTANT CITY ENGINEER

CITY OF RIVERSIDE, CALIFORNIA
DEPARTMENT OF PUBLIC WORKS

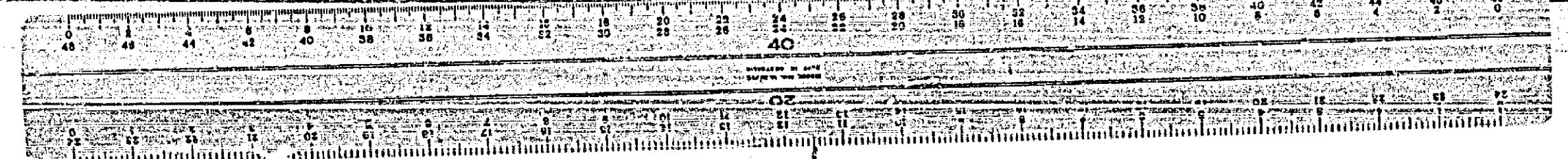
APPROVED BY: *[Signature]* NO. _____
DATE: *5/14/50* SHEET _____ OF _____

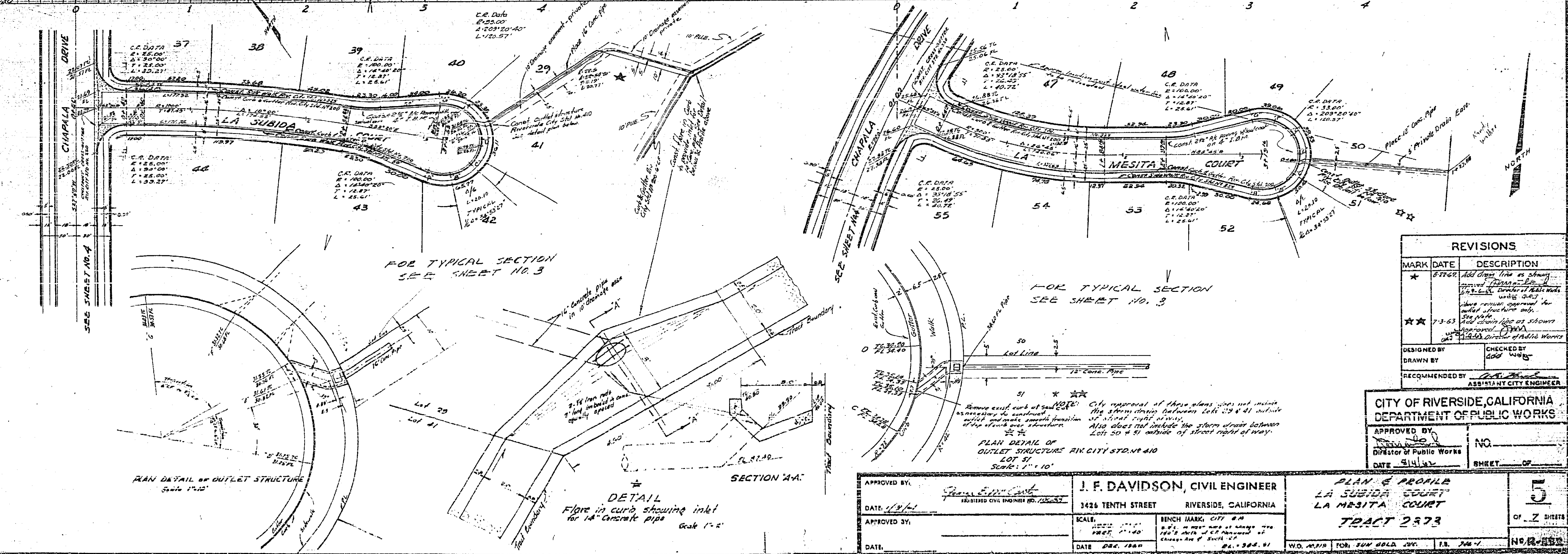
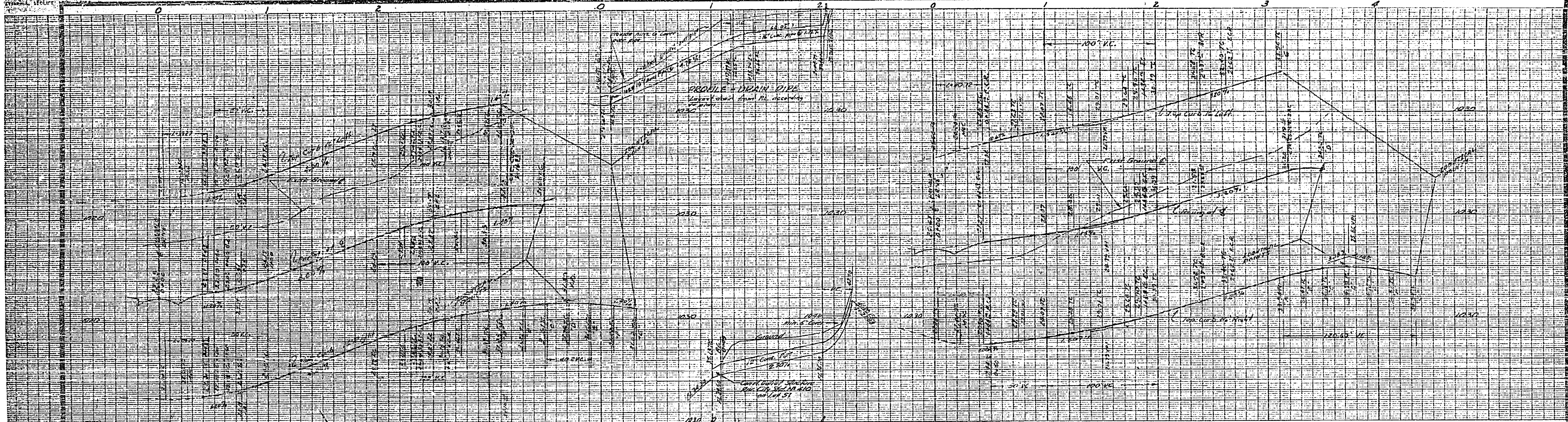
APPROVED BY: *[Signature]*
DATE: *11/10/49*
APPROVED BY: _____
DATE: _____

J. F. DAVIDSON, CIVIL ENGINEER
3426 TENTH STREET RIVERSIDE, CALIFORNIA
SCALE: HORIZ. 1" = 40' VERT. 1" = 10'
BENCH MARK: CITY B.M. S.E. 1/4 WEST CORNER of Chicago Ave 1842' NORTH of C.E. Monument, 1st E. Chicago Ave & South St. E.L. 2340.3'

PLAN & PROFILE
MONTE VISTA DRIVE
TRACT 2373

6
OF 2 SHEETS
NO. 2500





REVISIONS		
MARK	DATE	DESCRIPTION
*	8-17-62	Add drop line as shown removed from 37 to 38 & L.R. Director of Public Works working 2:15
**	7-3-63	After review approved for outlet structure only. See plan. Add storm line as shown approved. D.P.W. 12-15-63 Director of Public Works

DESIGNED BY: _____ CHECKED BY: *W.D.B.*
 DRAWN BY: _____ RECOMMENDED BY: *W.D.B.*
 ASSISTANT CITY ENGINEER

CITY OF RIVERSIDE, CALIFORNIA
 DEPARTMENT OF PUBLIC WORKS

APPROVED BY: _____ NO. _____
 DIRECTOR OF PUBLIC WORKS SHEET _____ OF _____
 DATE 9/4/62

APPROVED BY: *J. F. Davidson*
 DATE 1/19/61
 J. F. DAVIDSON, CIVIL ENGINEER
 3426 TENTH STREET RIVERSIDE, CALIFORNIA
 SCALE: 1" = 10' BENCH MARK: CITY 2.0
 DATE DEC. 1960

PLAN & PROFILE
 LA SUBIDA COURT
 LA MESITA COURT
 TRACT 2873
 5 OF 2 SHEETS
 NOV-62

FOR TYPICAL SECTION
 SEE SHEET NO. 3

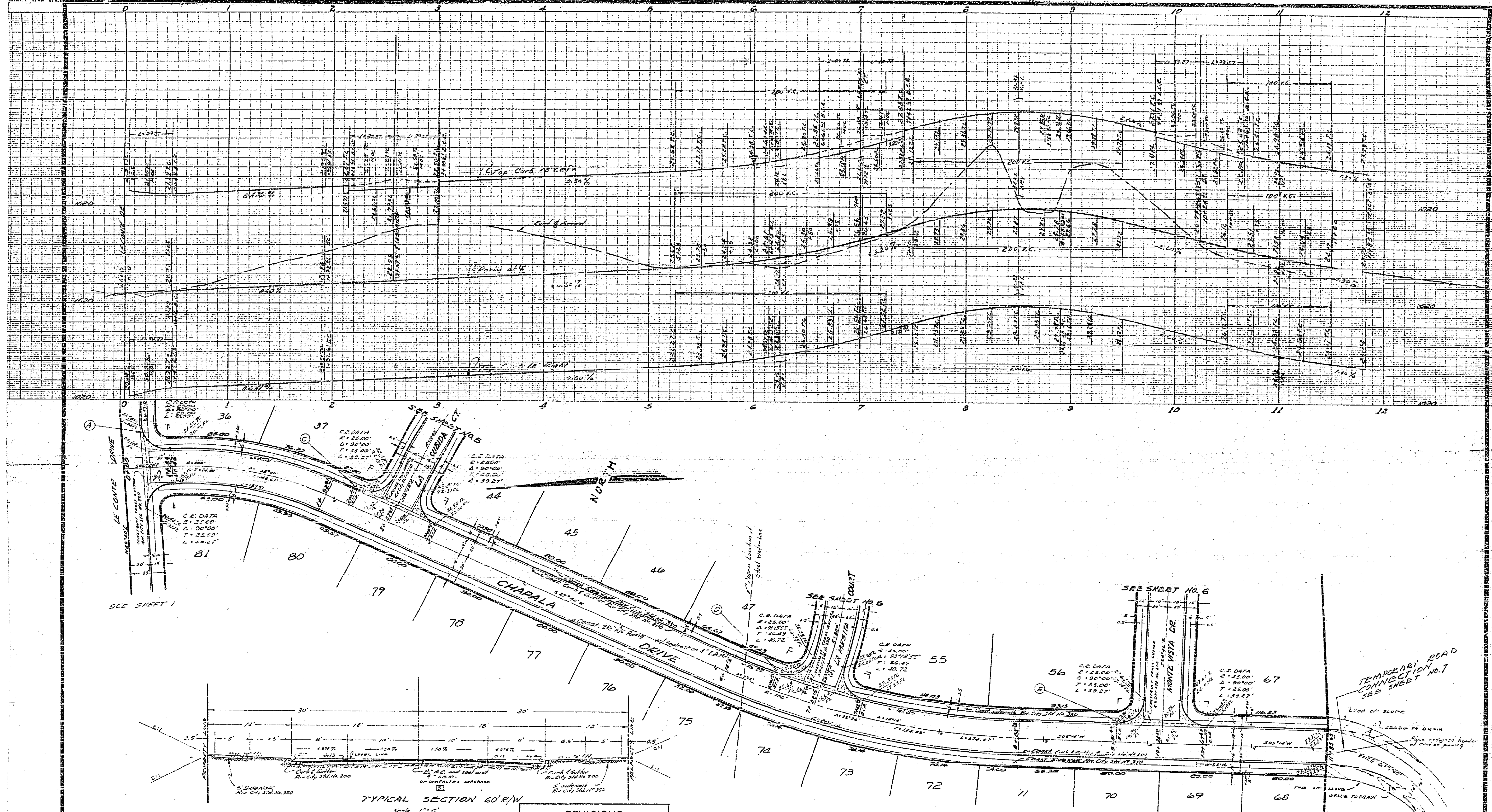
FOR TYPICAL SECTION
 SEE SHEET NO. 3

PLAN DETAIL OF
 OUTLET STRUCTURE
 Scale 1" = 10'

DETAIL
 Floor in curb showing inlet
 for 14" concrete pipe Scale 1" = 10'

PLAN DETAIL OF
 OUTLET STRUCTURE IN CITY STD. NO. 410
 LOT 51
 Scale: 1" = 10'

Remove curb at end of pipe
 as shown in elevation
 and make smooth transition
 of pipe at curb over structure.
 Also show that include the storm drain between
 lots 50 & 51 outside of street right of way.



TYPICAL SECTION 60' R/W
Scale 1" = 6'
CHAPALA DR. & MONTE VISTA DR.

REVISIONS		
MARK	DATE	DESCRIPTION
1	11-29-62	Changed I.R.M. from 12" to 8"

CITY OF RIVERSIDE, CALIFORNIA
DEPARTMENT OF PUBLIC WORKS

DESIGNED BY: [Signature]
CHECKED BY: [Signature]
DRAWN BY: [Signature]
RECOMMENDED BY: [Signature]
ASSISTANT CITY ENGINEER

APPROVED BY: [Signature]
DIRECTOR OF PUBLIC WORKS
DATE: 5/11/64

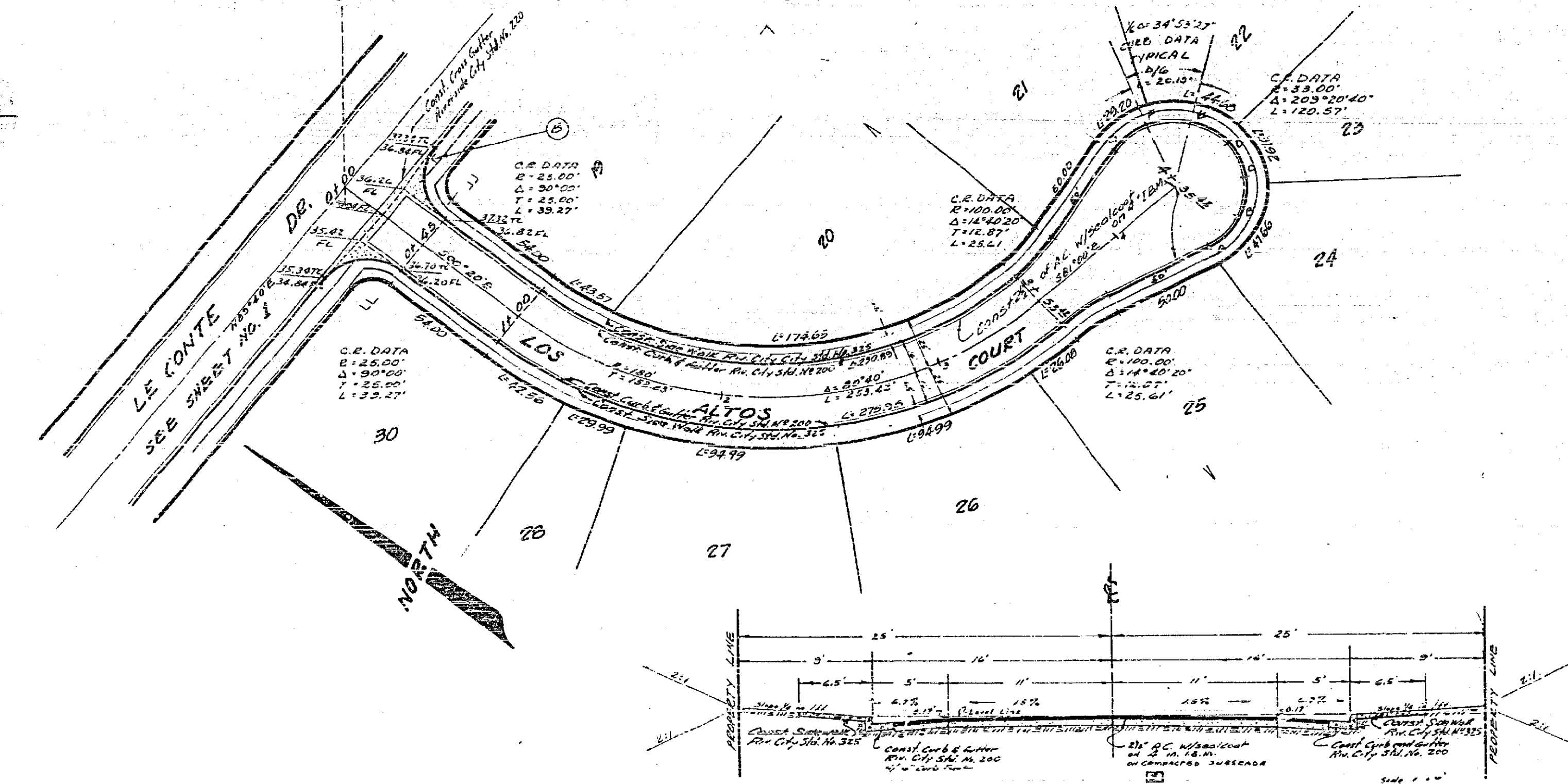
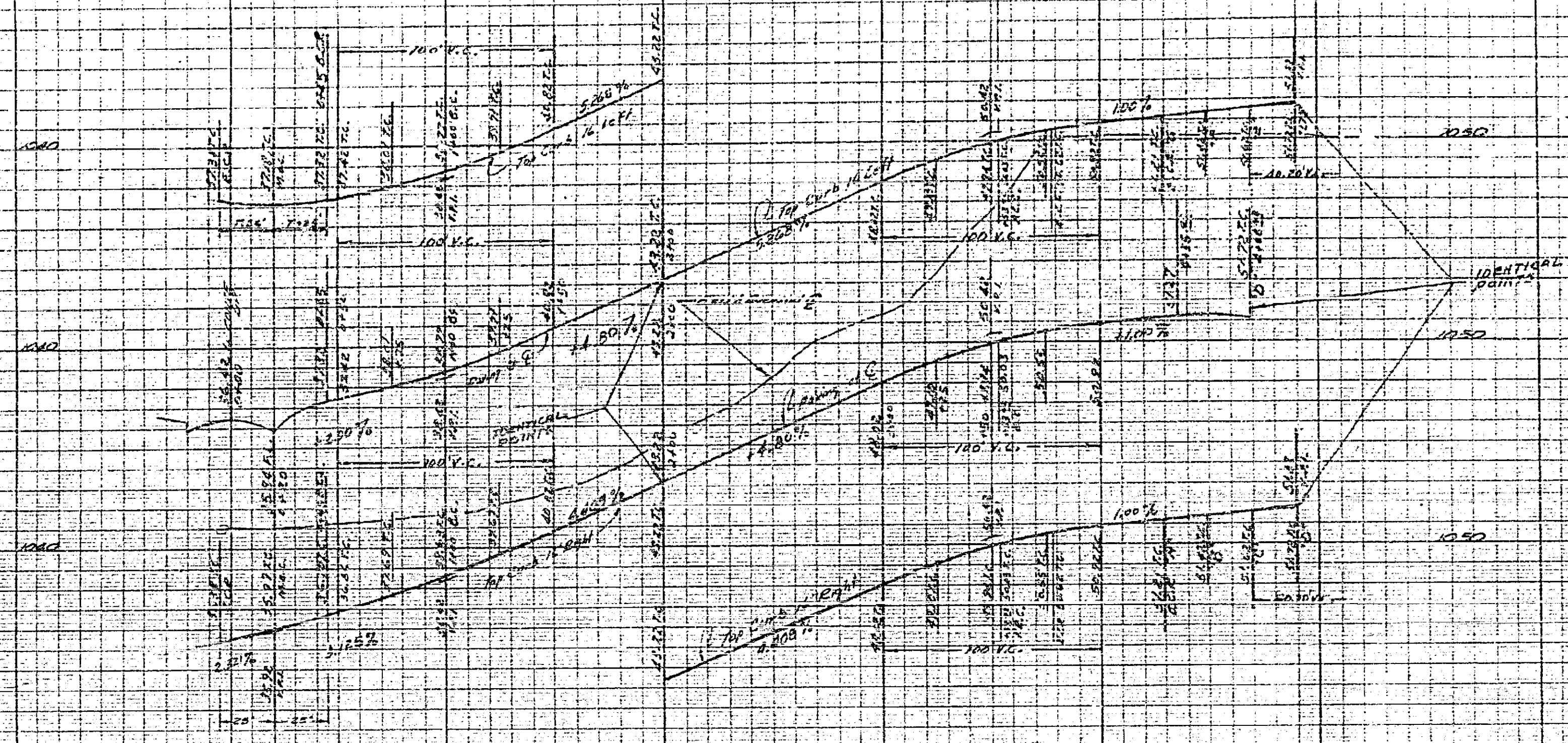
APPROVED BY: [Signature]
DATE: 11/29/62
APPROVED BY: [Signature]
DATE:

J. F. DAVIDSON, CIVIL ENGINEER
3925 TENTH STREET
RIVERSIDE, CALIFORNIA

SCALE: HORIZ. 1" = 40'
VERT. 1" = 4'
BENCH MARK: CITY B.M.
DATE: DEC. 1960

PLAN & PROFILE
CHAPALA DRIVE
TRACT 2373

4
OF 2 SHEETS
NO. 552



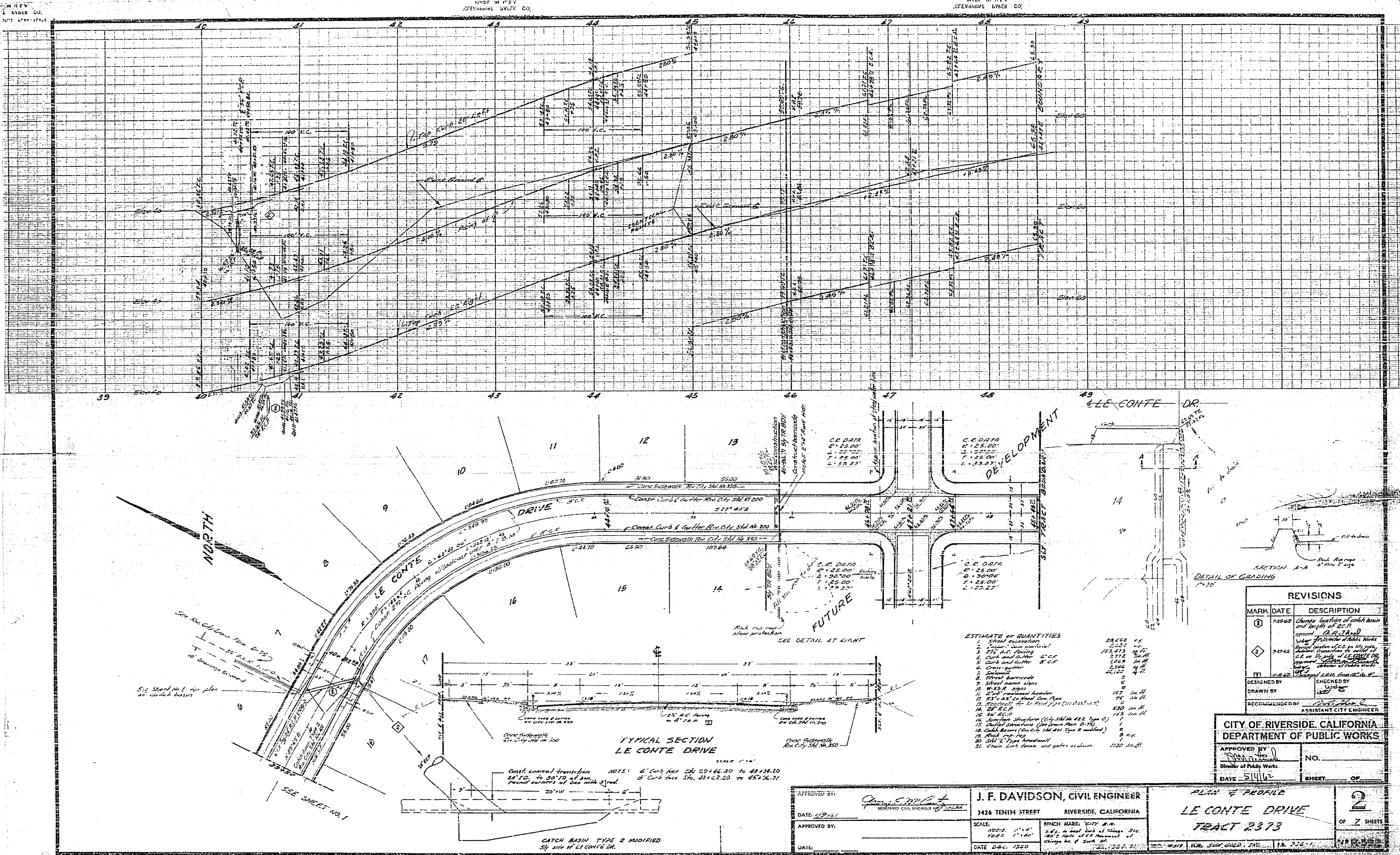
TYPICAL SECTION
LOS ALTOS COURT
LA SUBIDA COURT
LA MESITA COURT

REVISIONS		
MARK	DATE	DESCRIPTION
(X)	11-8-62	Changed I.B.M. from 12'-6\"/>

CITY OF RIVERSIDE, CALIFORNIA
DEPARTMENT OF PUBLIC WORKS

DESIGNED BY W.D.S.	CHECKED BY J.F.D.	APPROVED BY <i>[Signature]</i>	NO.
DRAWN BY	RECOMMENDED BY <i>[Signature]</i>	DATE 5/1/62	STREET CF

APPROVED BY: <i>[Signature]</i>	J. F. DAVIDSON, CIVIL ENGINEER	PLAN & PROFILE LOS ALTOS COURT STORM DRAIN TRACT 2373	3 OF 2 SHEETS No. R-592
DATE: 11/8/62	3426 TENTH STREET RIVERSIDE, CALIFORNIA		
APPROVED BY:	SCALE: HORIZ. 1"=4' VERT. 1"=4'	BENCH MARK: CITY 3.00 S.E. 1/4 of Sec. 4 of Chicago Ave 100' E. from N.E. corner of Chicago Ave & South St. E.L. 384.31	
DATE:	DATE DEC. 1960	W.O. 10313 FOR: SUN G.O.D., INC.	F.B. 716-1



ESTIMATE OF QUANTITIES

1. Street excavation	28,000	cu. ft.
2. Street curb material	5,000	sq. ft.
3. 2 1/2" A.C. paving	15,473	sq. ft.
4. Curb and gutter C.C.P.	2,772	sq. ft.
5. Curb and gutter S.C.P.	1,066	sq. ft.
6. Catch-basins	2,586	sq. ft.
7. Sidewalks	4,100	sq. ft.
8. Street barricade	2	ea.
9. Street name signs	2	ea.
10. W-55-R signs	157	sq. ft.
11. W-24 pavement marker	75	sq. ft.
12. 53" x 43" In Road Con. Plan	5	ea.
13. Roadway for 12" dia. pipe (constant 10')	5	ea.
14. 24" R.C.P.	530	lin. ft.
15. 36" R.C.P.	153	lin. ft.
16. Jumping Structure (City Std. No. 422 Type C)	1	ea.
17. Curb Structure (See Drain Plan D-75)	1	ea.
18. Catch Basins (City Std. No. 401 Type 2 modified)	2	ea.
19. Road Top 10'	1	ea.
20. 36" x 48" Type 2 modified	2	ea.
21. Chain Link fence and gates as shown	1,100	lin. ft.

REVISIONS

MARK	DATE	DESCRIPTION
①	7-25-62	Change location of catch basin and length of B.C.P.
②	8-27-62	Change location of public works catch basin to suit of C.R. on Sluice Box Alley. Change location of public works catch basin to suit of C.R. on Sluice Box Alley.
③	11-8-62	Changed L.R.M. from 12" to 18"

DESIGNED BY: [Signature]
 DRAWN BY: [Signature]
 CHECKED BY: [Signature]
 RECOMMENDED BY: [Signature]
 ASSISTANT CITY ENGINEER

CITY OF RIVERSIDE, CALIFORNIA
DEPARTMENT OF PUBLIC WORKS

APPROVED BY: [Signature]
 Director of Public Works
 DATE: 5/14/62
 SHEET: 2 OF 2

APPROVED BY: [Signature]
 DATE: 1/19/61
 J. F. DAVIDSON, CIVIL ENGINEER
 3426 TENTH STREET, RIVERSIDE, CALIFORNIA
 SCALE: 1" = 4' (PLAN), 1" = 10' (PROFILE)
 DATE: DEC. 1950

PLAN & PROFILE
LE CONTE DRIVE
TRACT 2373
 OF 2 SHEETS

TYPICAL SECTION LE CONTE DRIVE
 SCALE: 1" = 10'
 NOTE: 6" Curb face Slo. 20' x 46.30' to 48' x 38.20'
 8" Curb face Slo. 30' x 52.20' to 45' x 26.71'
 FOUND CURBS OF BOX WITH 2" RAIL
 23' x 11'

See Also City of Riverside Plan D-75
 15' x 10' R.C.P. 12" dia.
 10' drainage covered
 5 1/2' Street No. 1 for plan of catch basin

SEE SHEET NO. 1

CATCH BASIN TYPE 2 MODIFIED
 6' x 6' side of LE CONTE DR.

