

ASSESSMENT NO. 493

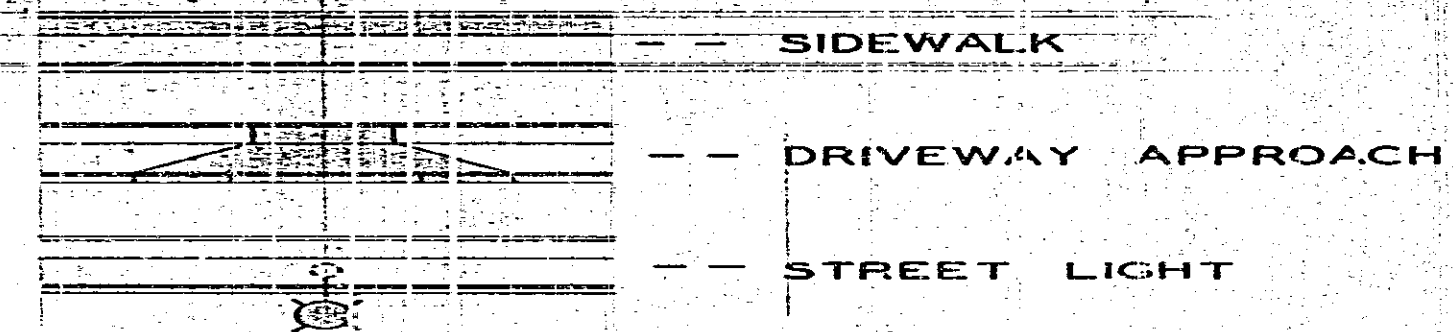
DIAGRAM

EXHIBITING PARKVIEW IMPROVEMENT DISTRICT NO. 3  
IN THE CITY OF RIVERSIDE, CALIFORNIA, AND THE WORK WHICH HAS BEEN DONE  
PURSUANT TO THE CONTRACT BETWEEN THE SUPERINTENDENT OF STREETS OF  
SAID CITY AND GLENN WM. FINTEL, INC. DATED AUG. 20, 1963,  
FOR THE CONSTRUCTION OF CONCRETE SIDEWALKS AND DRIVEWAY APPROACHES,  
AND THE INSTALLATION OF STREET LIGHTS ON EXISTING UTILITY POLES.

AS IS MORE PARTICULARLY DESCRIBED IN SAID CONTRACT, TO WHICH REFERENCE  
IS HEREBY MADE FOR FURTHER PARTICULARS.  
SAID DIAGRAM ALSO SHOWS EACH SEPARATE LOT OR PARCEL OF LAND WITHIN THE  
LIMITS OF THE ASSESSMENT DISTRICT, AND THE DIMENSIONS OF EACH SUCH LOT OR  
PARCEL OF LAND, AND THE RELATIVE LOCATION OF THE SAME TO THE WORK DONE.  
EACH LOT OR PARCEL OF LAND IS NUMBERED IN RED INK TO CORRESPOND TO THE  
RED INK NUMBERS IN THE ASSESSMENT.  
HEREIN FIGURES NEXT TO PROPERTY LINES SHOW LENGTH OF SAID LINES IN FEET  
AND DECIMALS THEREOF.  
THE MARK 'C' MEANS FEET.  
PROPERTY LINES THAT DIFFER FROM THE RECORDED SUBDIVISIONS ARE SHOWN BY  
BROKEN LINES.  
THE DISTRICT BENEFITED IS BOUNDED BY A HEAVY DASHED LINE.  
PROPERTY INCLUDED IN THIS ASSESSMENT IS SHOWN ON THE FOLLOWING RECORD-  
ED MAPS:

PORTIONS OF LOTS 12 AND 13, BLOCK 13, R.L. & I. CO. LANDS, M.B. 1, PG. 70,  
SAN BERNARDINO COUNTY RECORDS.

HEREIN THE DIFFERENT KINDS OF WORK  
PERFORMED ARE SHOWN AS FOLLOWS:



HERE FOLLOWS A STATEMENT OF AMOUNTS OF  
DIFFERENT KINDS OF WORK DONE PURSUANT TO  
THE HERE-IN-BEFORE IDENTIFIED CONTRACT  
AND TO RESOLUTION OF INTENTION NO. 9692,  
ADOPTED BY THE CITY COUNCIL OF THE CITY  
OF RIVERSIDE, CALIFORNIA ON THE 14<sup>TH</sup> DAY  
OF MAY, 1963.

4690 S.F. - CONCRETE SIDEWALK. STD. DWG. NO. 350.  
600 S.F. - CONCRETE DRIVEWAY APPROACH. STD.  
DWG. NO. 302.  
600 S.F. - PAVEMENT REMOVAL.  
FIXED SUM - STREET LIGHTING SYSTEM - COMPLETE.

I HEREBY CERTIFY THAT THE ABOVE WORK WAS DONE IN ACCORDANCE  
WITH LINES AND GRADES FURNISHED OR APPROVED BY ME, AND THAT  
THE DIAGRAM OF THE ASSESSMENT DISTRICT AND THE QUANTITIES  
OF WORK SHOWN HEREON ARE CORRECT.

*[Signature]*  
CITY ENGINEER OF THE  
CITY OF RIVERSIDE, CALIFORNIA

DIAGRAM RECEIVED:

THIS DAY OF , 19

SUPERINTENDENT OF STREETS OF THE  
CITY OF RIVERSIDE, CALIFORNIA

RECORDED:

AT O'CLOCK, .M.,  
THIS DAY OF , 19

SUPERINTENDENT OF STREETS OF THE  
CITY OF RIVERSIDE, CALIFORNIA

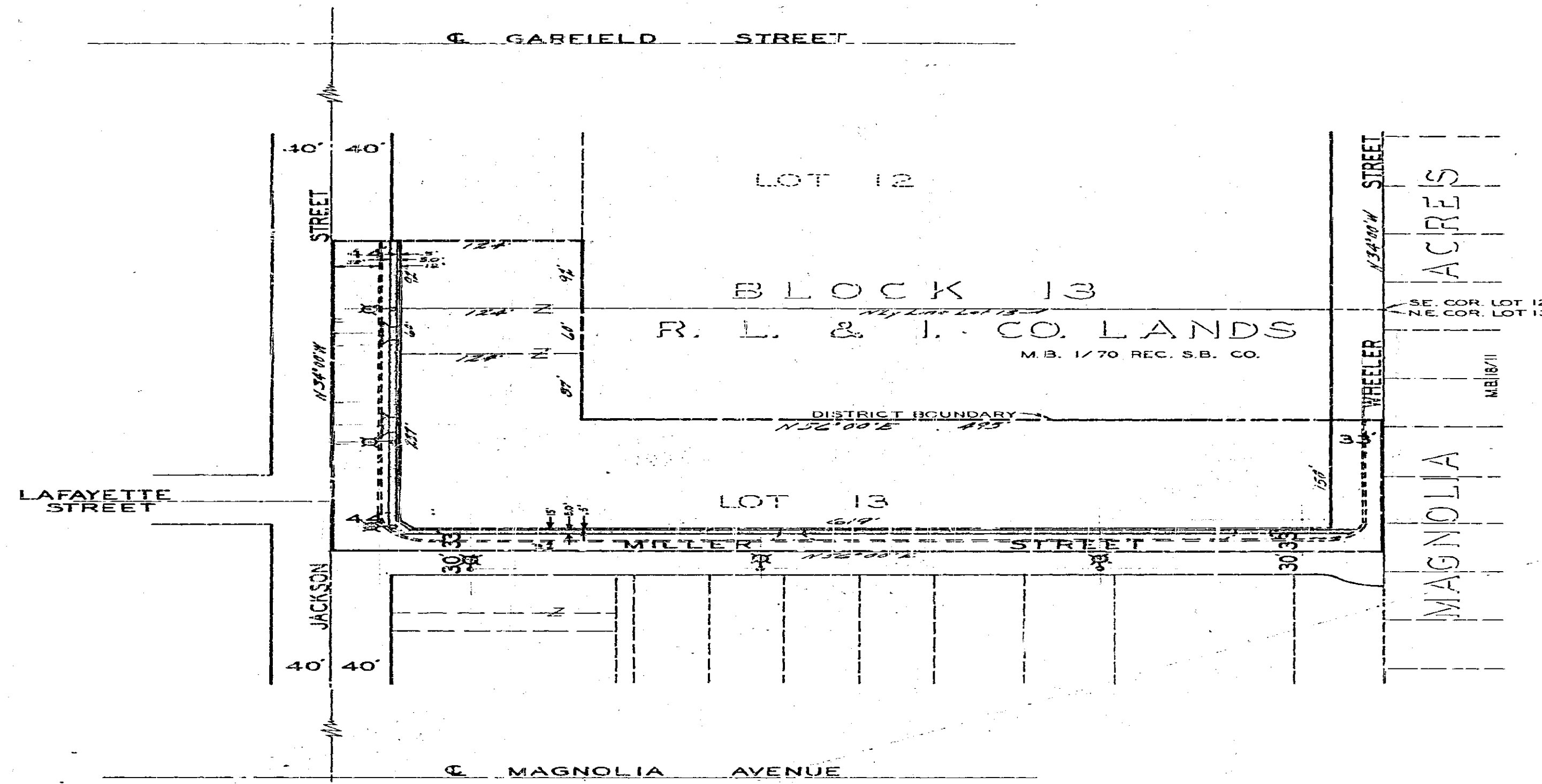


DIAGRAM  
 OF THE PROPERTY AFFECTED OR BENEFITED  
 BY THE WORK IN THE  
 PARKVIEW  
 IMPROVEMENT DISTRICT NO. 3

REVISIONS			CITY OF RIVERSIDE CALIFORNIA DEPARTMENT OF PUBLIC WORKS	
MARK	DATE	DESCRIPTION		
			PARKVIEW IMPROVEMENT DISTRICT NO. 3	
DESIGNED BY	CHECKED BY	APPROVED BY	<b>R-601B</b>	SHEET 2 OF 2
DRAWN BY	RECOMMENDED BY	DATE		

