

BENCH MARKS
 B.M. Nail in top of wall 400 W. side Blinn St.
 Elev. = 943.42'
 T.B.M. Chisled square "A" N.W. corner top step of
 church on East 4th Ave. Elev. = 1018.13'

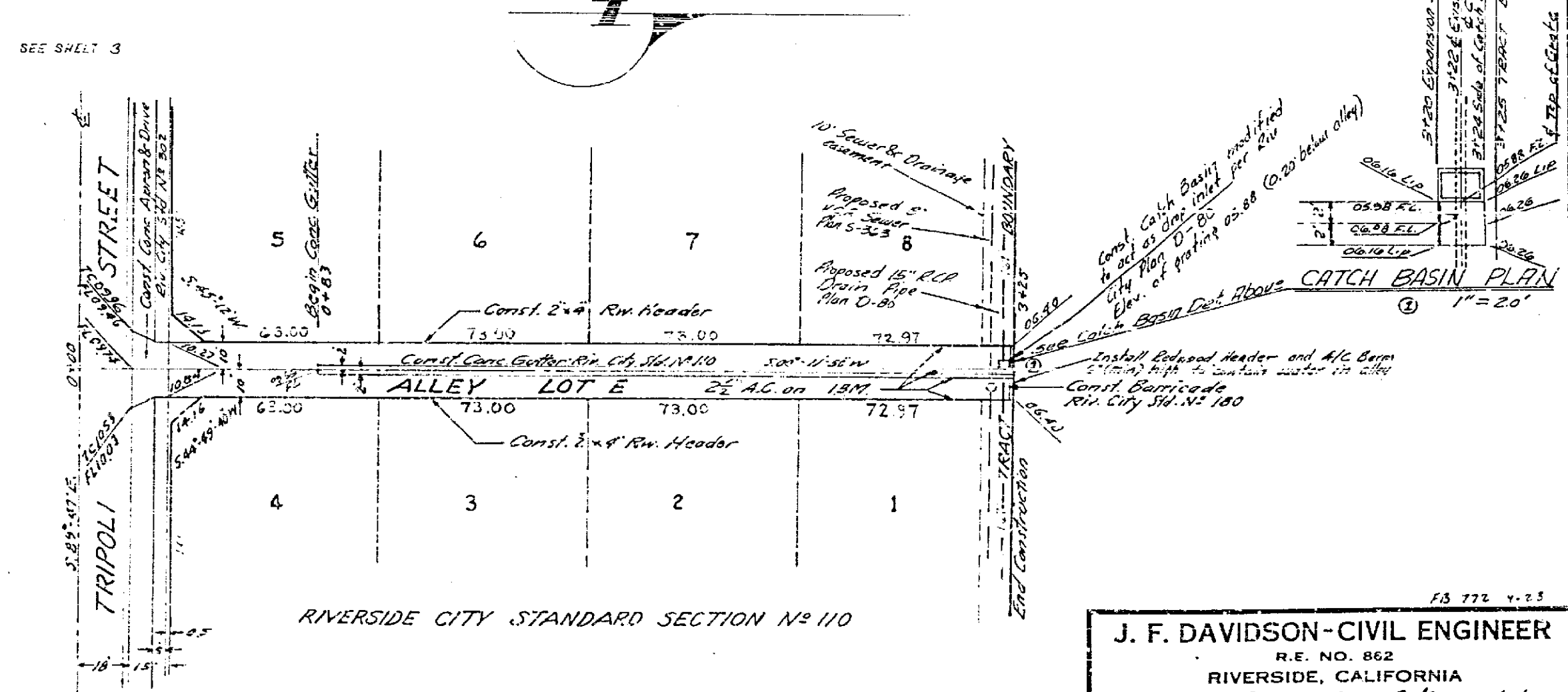
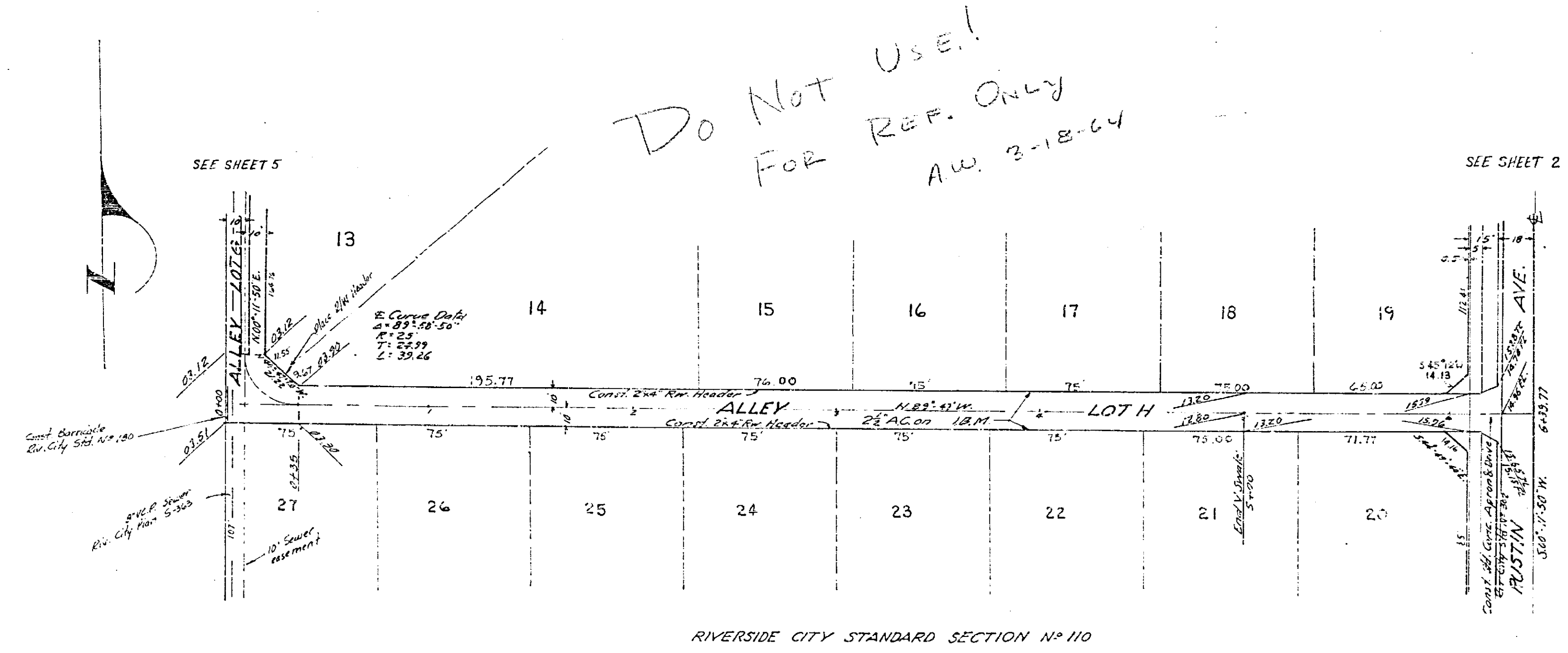
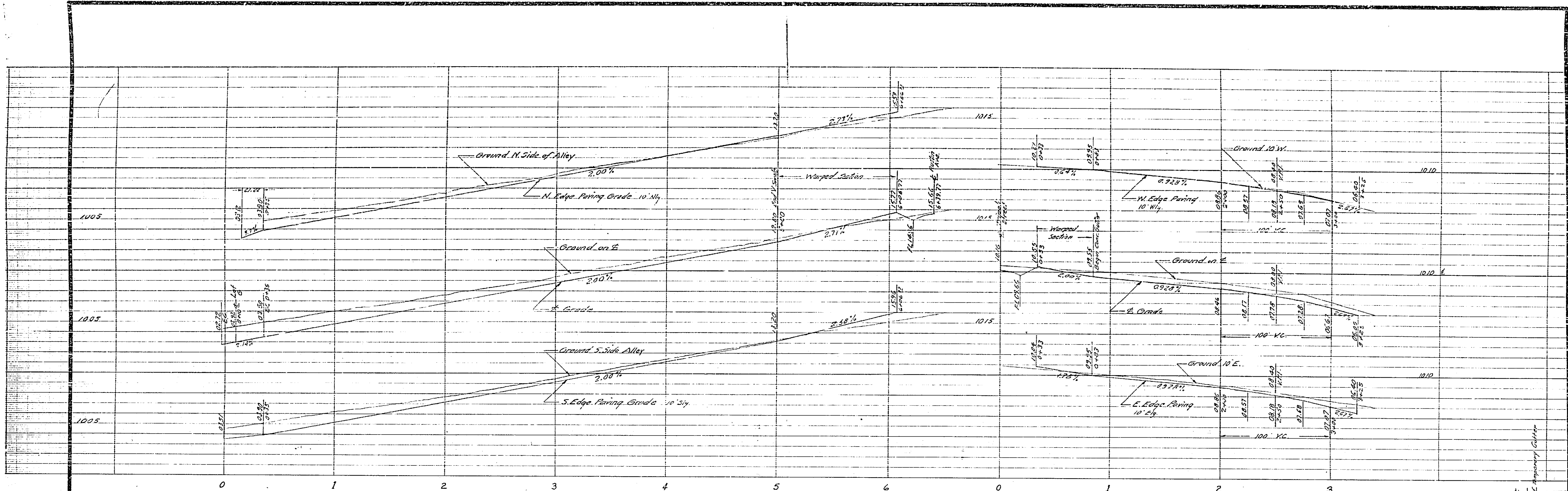
REVISIONS		
MARK	DATE	DESCRIPTION

J. F. DAVIDSON-CIVIL ENGINEER
 R.I.E. NO. 822
 RIVERSIDE, CALIFORNIA
 APPROVED BY *[Signature]* DATE 1/28/63
CITY OF RIVERSIDE, CALIFORNIA
DEPARTMENT OF PUBLIC WORKS

ALLEY PLAN & PROFILE
LOTS 9 & 10
TRACT 2350
 HORIZ. SCALE 1"=40' VERT. SCALE 1"=4'

DESIGNED BY *[Signature]* CHECKED BY *[Signature]*
 DRAWN BY *[Signature]* RECOMMENDED BY *[Signature]*
 ASSISTANT CITY ENGINEER

APPROVED BY *[Signature]* NO. R-602
 DIRECTOR OF PUBLIC WORKS
 DATE 1-28-63 SHEET 5 OF 5



BENCH MARKS
 3.M. Nail in top of sidewalk N. Side Blaine Street
 2.70 ± 2.1, 2.04 Ave. Elev. = 393.48'
 T.M. Chisler Square 0' ± 1.5, 1.50 ± 0.25, 2.50 ± 0.25
 Chisler on 2.50 ± 2.1, 2.04 Ave. Elev. = 391.13'

REVISIONS	
MARK	DATE
①	9/19/63

J. F. DAVIDSON - CIVIL ENGINEER
 R.E. NO. 862
 RIVERSIDE, CALIFORNIA
 APPROVED BY *Gene E. M. ...* DATE 5/24/63

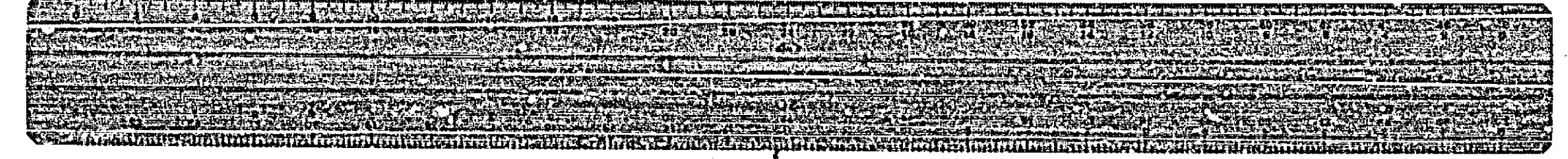
CITY OF RIVERSIDE, CALIFORNIA
 DEPARTMENT OF PUBLIC WORKS

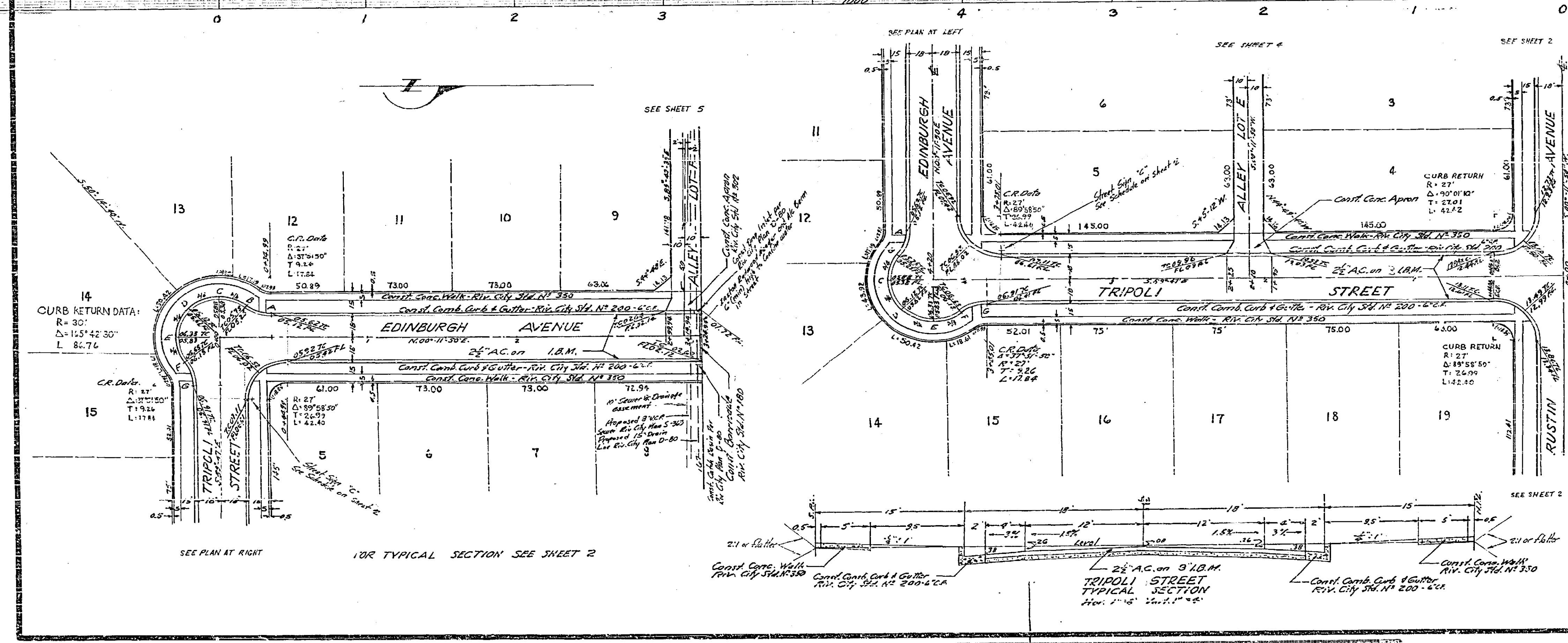
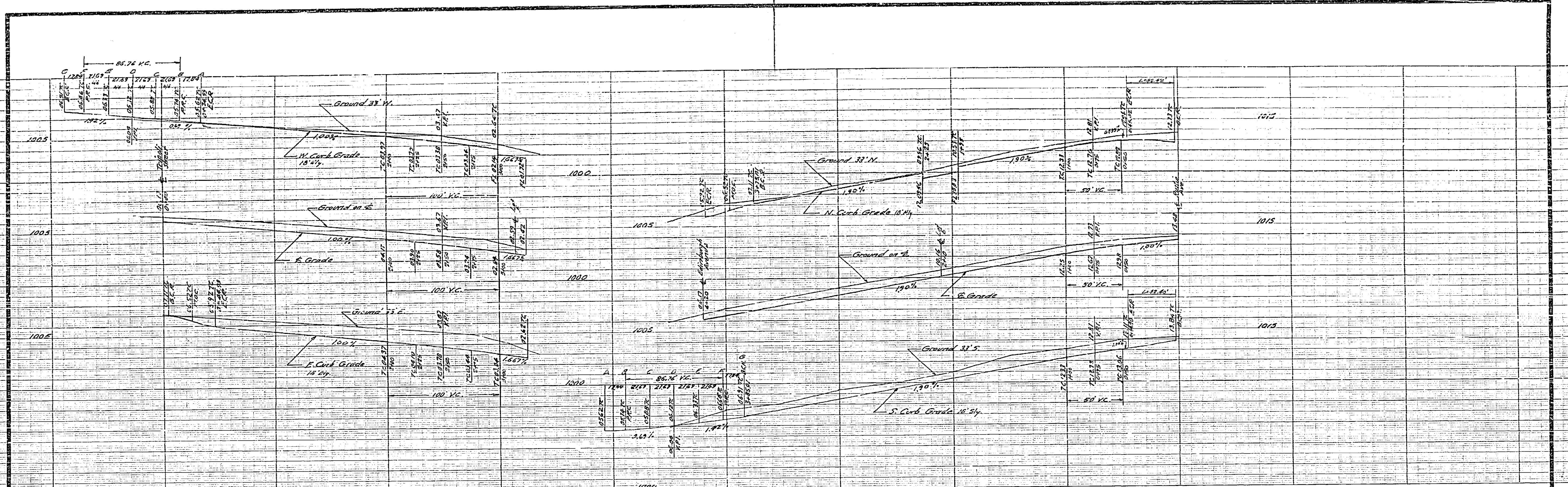
ALLEY PLAN & PROFILE
LOTS E & H
TRACT 2350
 HORIZ. SCALE 1" = 40' VERT. SCALE 1" = 4'

DESIGNED BY *...*
 DRAWN BY *...*
 RECOMMENDED BY *...* ASSISTANT CITY ENGINEER

APPROVED BY *...* DIRECTOR OF PUBLIC WORKS
 DATE 1-27-63

NO. **R-602**
 SHEET **4** OF **5**

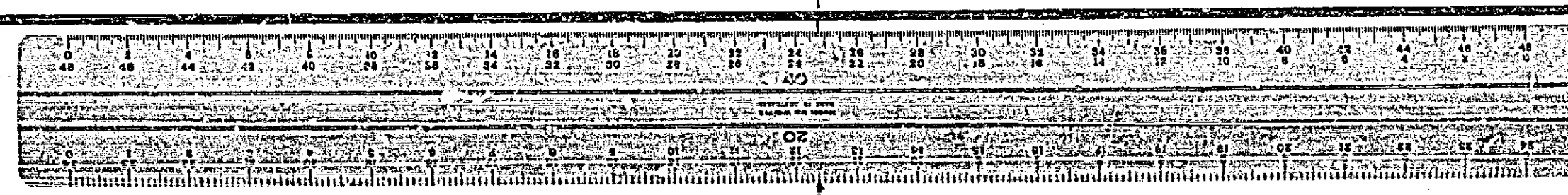


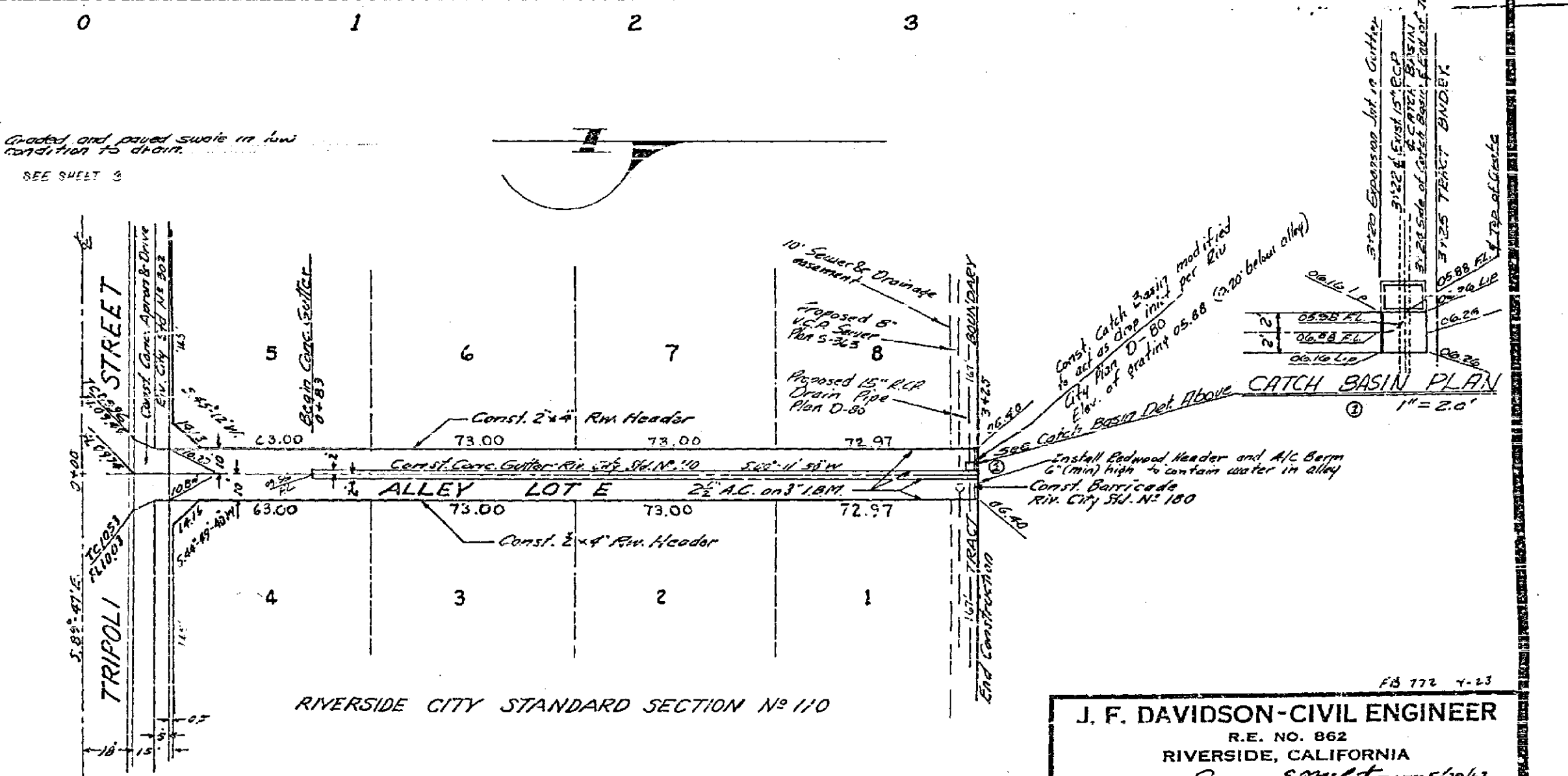
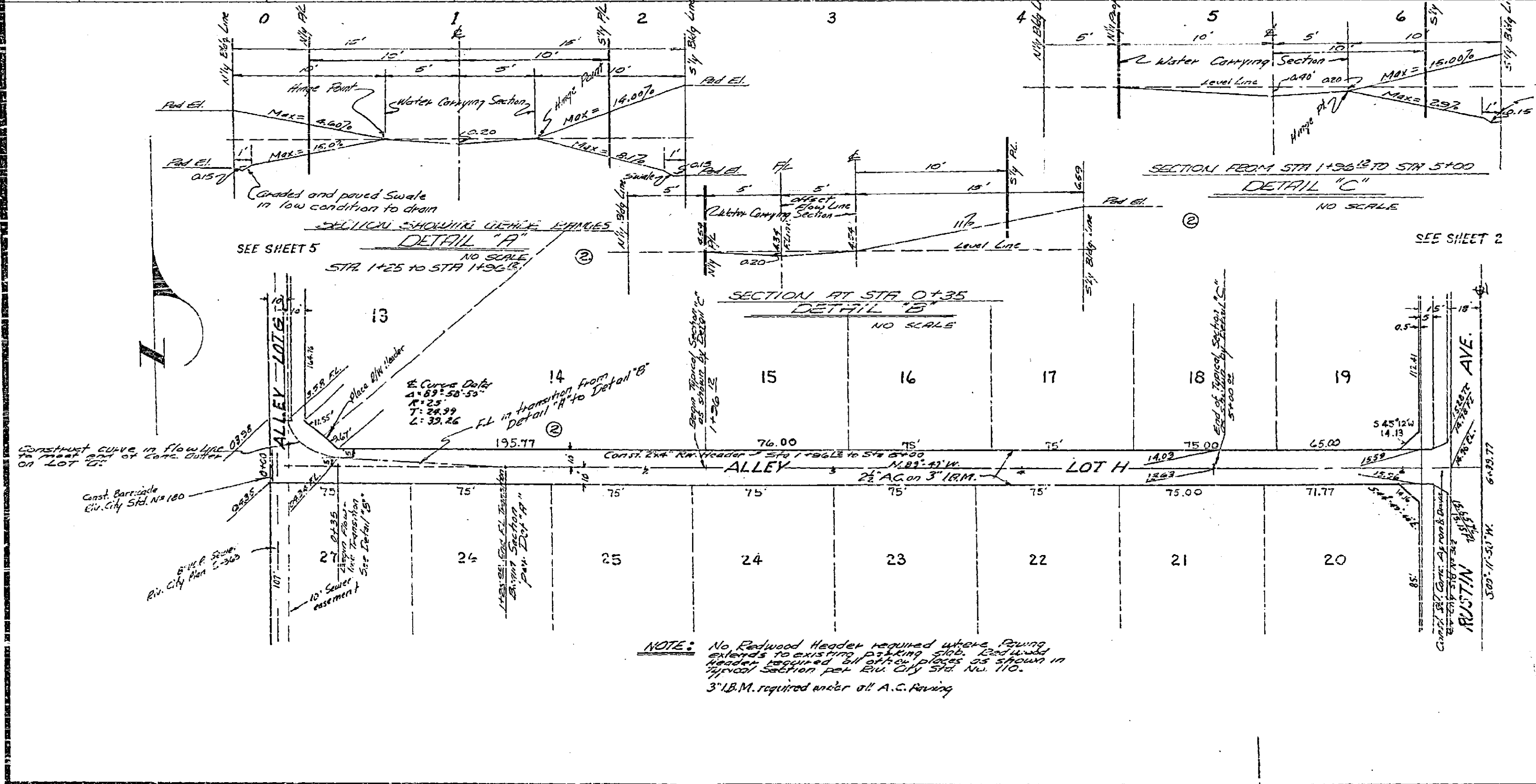
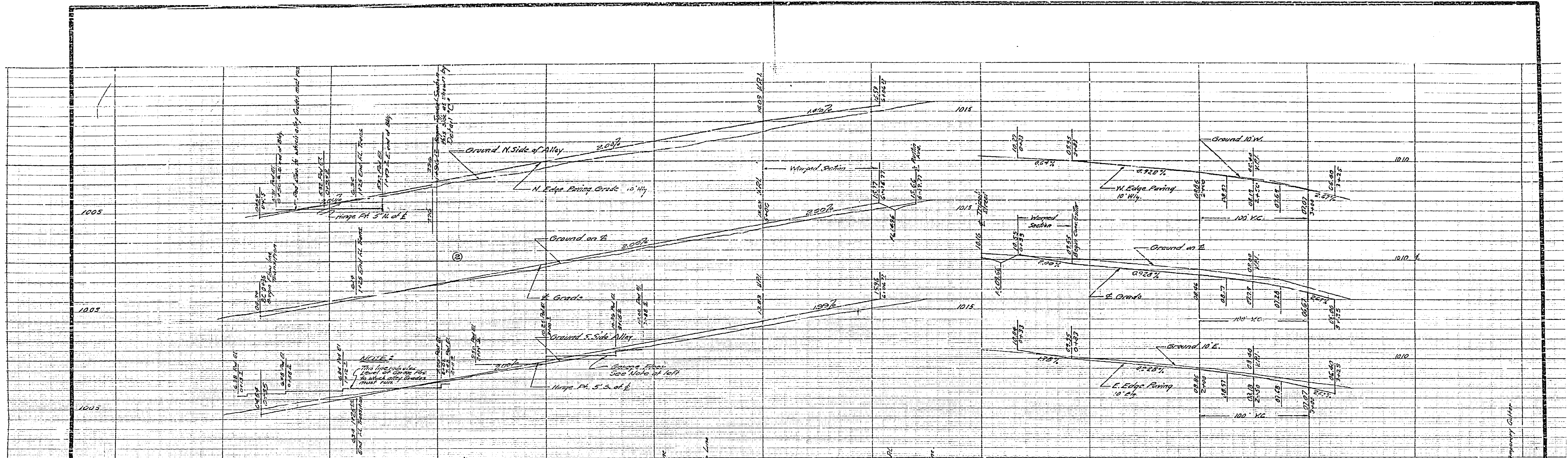


BENCH MARKS
 B.M. Nail in top of near box N.W. Side Blain St.
 21702 2 1/2' from N.W. corner. Elev. = 993.45'
 T.O.M. Chiseled square "L" N.W. corner top step of
 church on Rustin Ave. 21502 N.W. corner. Elev. = 1018.13'

REVISIONS	
MARK	DESCRIPTION

J. F. DAVIDSON - CIVIL ENGINEER
 RIVERSIDE, CALIFORNIA
 APPROVED BY *[Signature]* DATE 1-28-63
CITY OF RIVERSIDE, CALIFORNIA
 DEPARTMENT OF PUBLIC WORKS
 STREET PLAN & PROFILE
TRIPOLI ST. - EDINBURGH AVE.
 TRACT 2350
 HORIZ. SCALE 1"=40' VERT. SCALE 1"=4'
 DESIGNED BY *[Signature]*
 DRAWN BY *[Signature]*
 CHECKED BY *[Signature]*
 RECOMMENDED BY *[Signature]* ASSISTANT CITY ENGINEER
 APPROVED BY *[Signature]* Director of Public Works
 DATE 1-28-63
 NO. R-602
 SHEET 3 OF 5





NOTE: No Redwood Header required where Sewing
 extends to existing parking strip. Redwood
 Header required at parking strip as shown in
 typical Section per Riv. City Std. No. 110.
 3" LB.M. required under all A.C. Paving

BENCH MARKS
 B.M. Wall in top of marker N. Side Chain Street
 Elev. = 214.70
 Elev. = 223.45
 B.M. Chisled square 12" N.W. corner top step at
 Church on Rustin Ave. Elev. = 214.70
 Elev. = 214.13

REVISIONS		
MARK	DATE	DESCRIPTION
①	5/15/63	Revised Catch Basin existing Catch Basin
②	5/15/63	Revised Plan & Profile of Catch Basin

J. F. DAVIDSON - CIVIL ENGINEER
 R.E. NO. 862
 RIVERSIDE, CALIFORNIA
 APPROVED BY *[Signature]* DATE 5/15/63

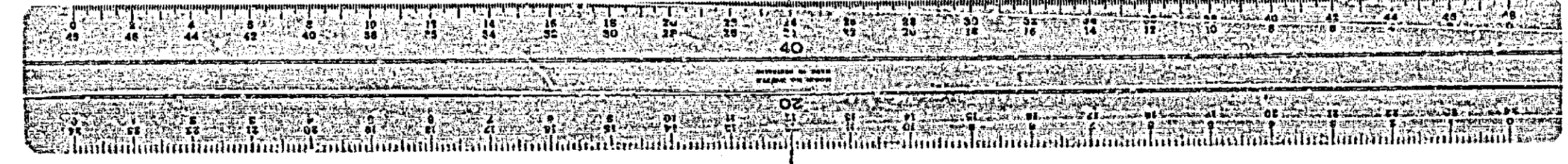
CITY OF RIVERSIDE, CALIFORNIA
 DEPARTMENT OF PUBLIC WORKS

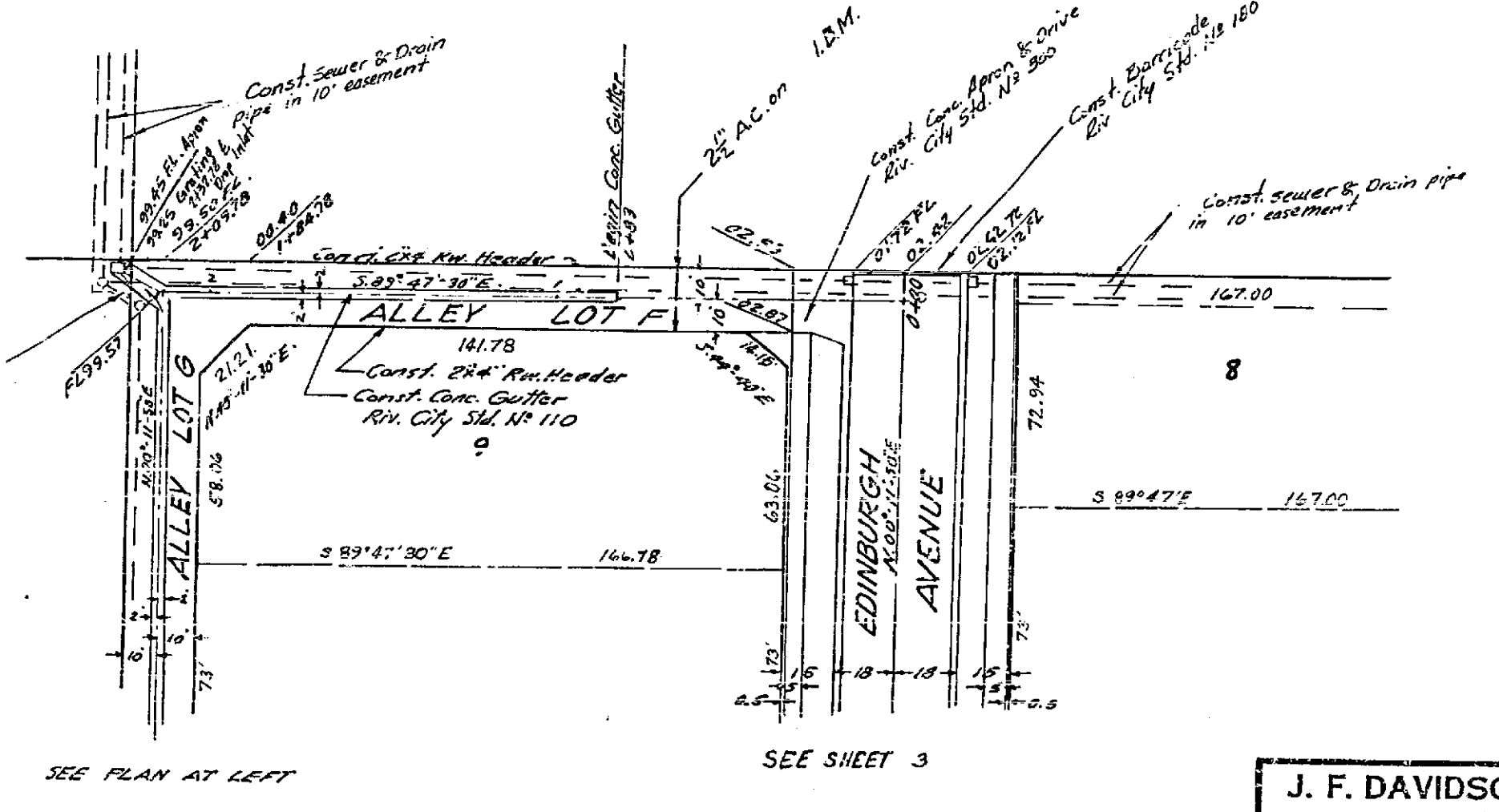
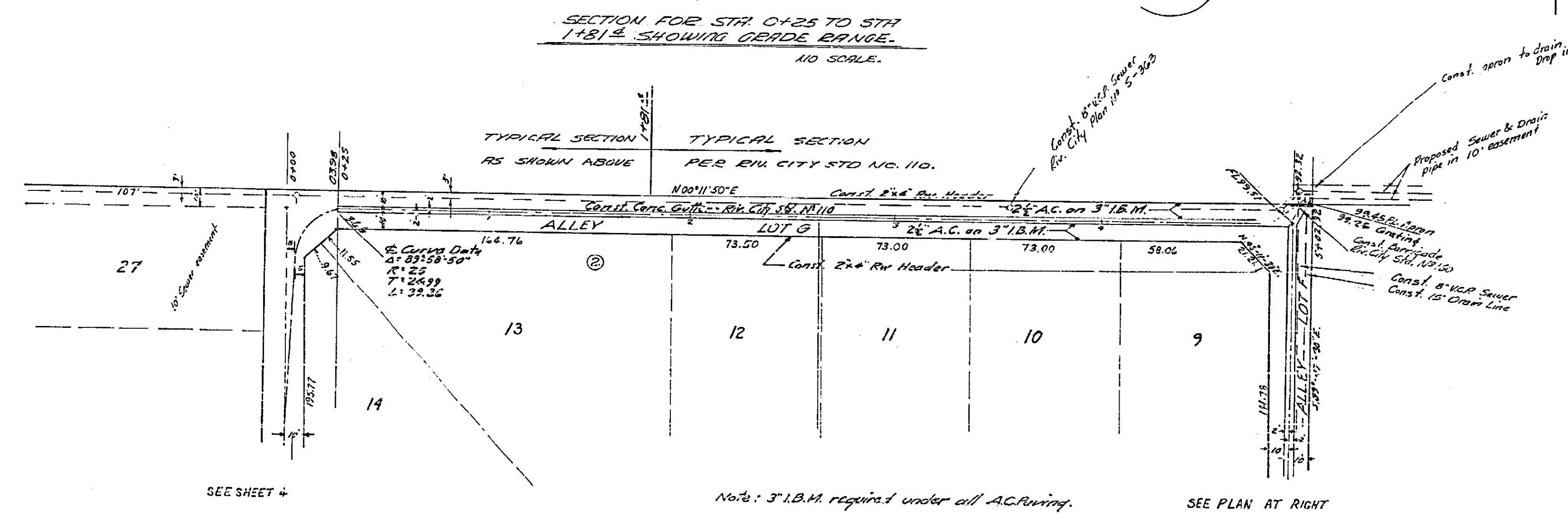
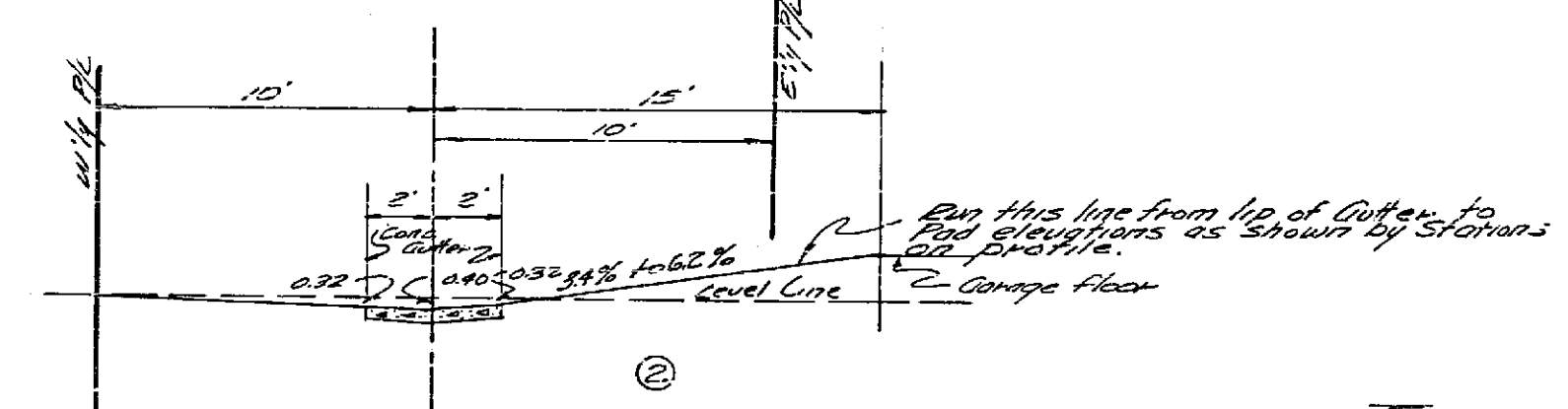
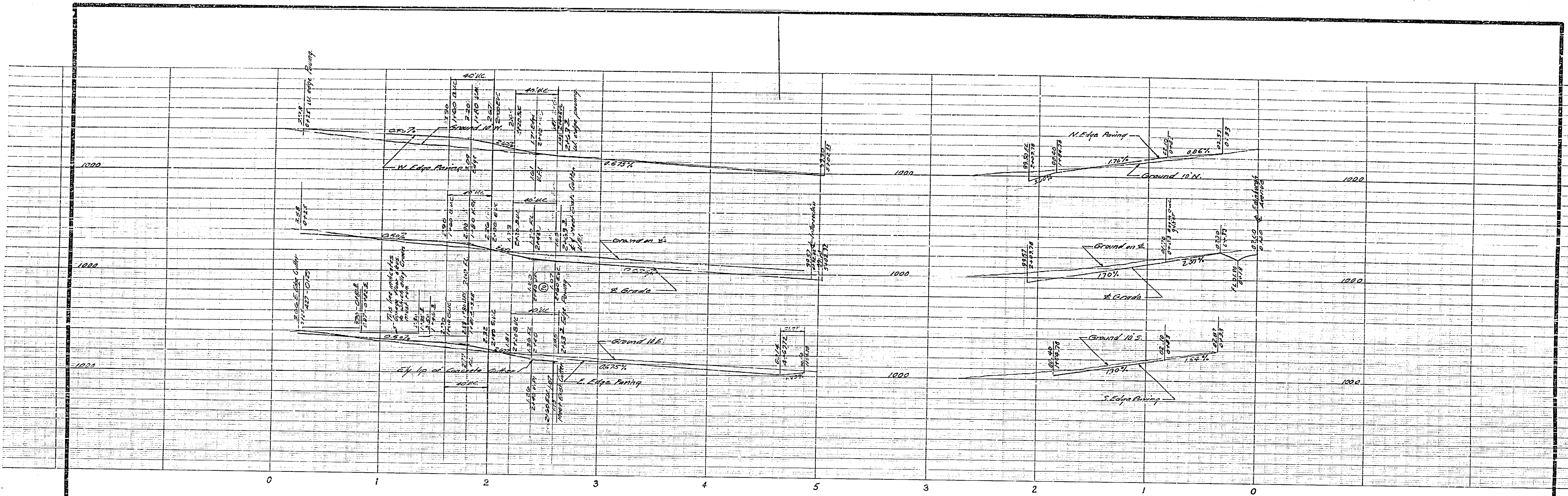
ALLEY PLAN & PROFILE
LOTS E & H
TRACT 2350
 HORIZ. SCALE 1" = 40' VERT. SCALE 1" = 4'

DESIGNED BY *[Signature]* CHECKED BY *[Signature]*
 DRAWN BY *[Signature]* DIRECTOR OF PUBLIC WORKS

RECOMMENDED BY *[Signature]* ASSISTANT CITY ENGINEER

DATE 1-28-63 SHEET 4 OF 5

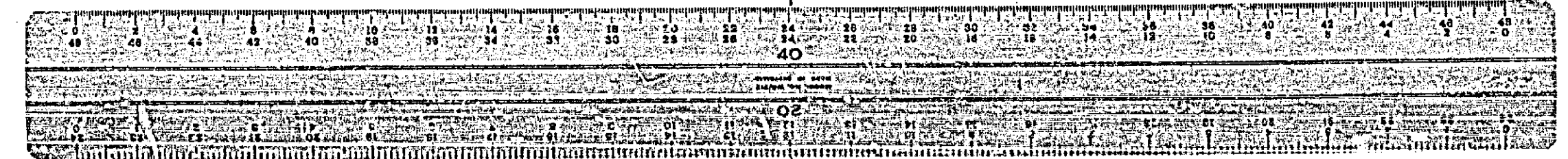


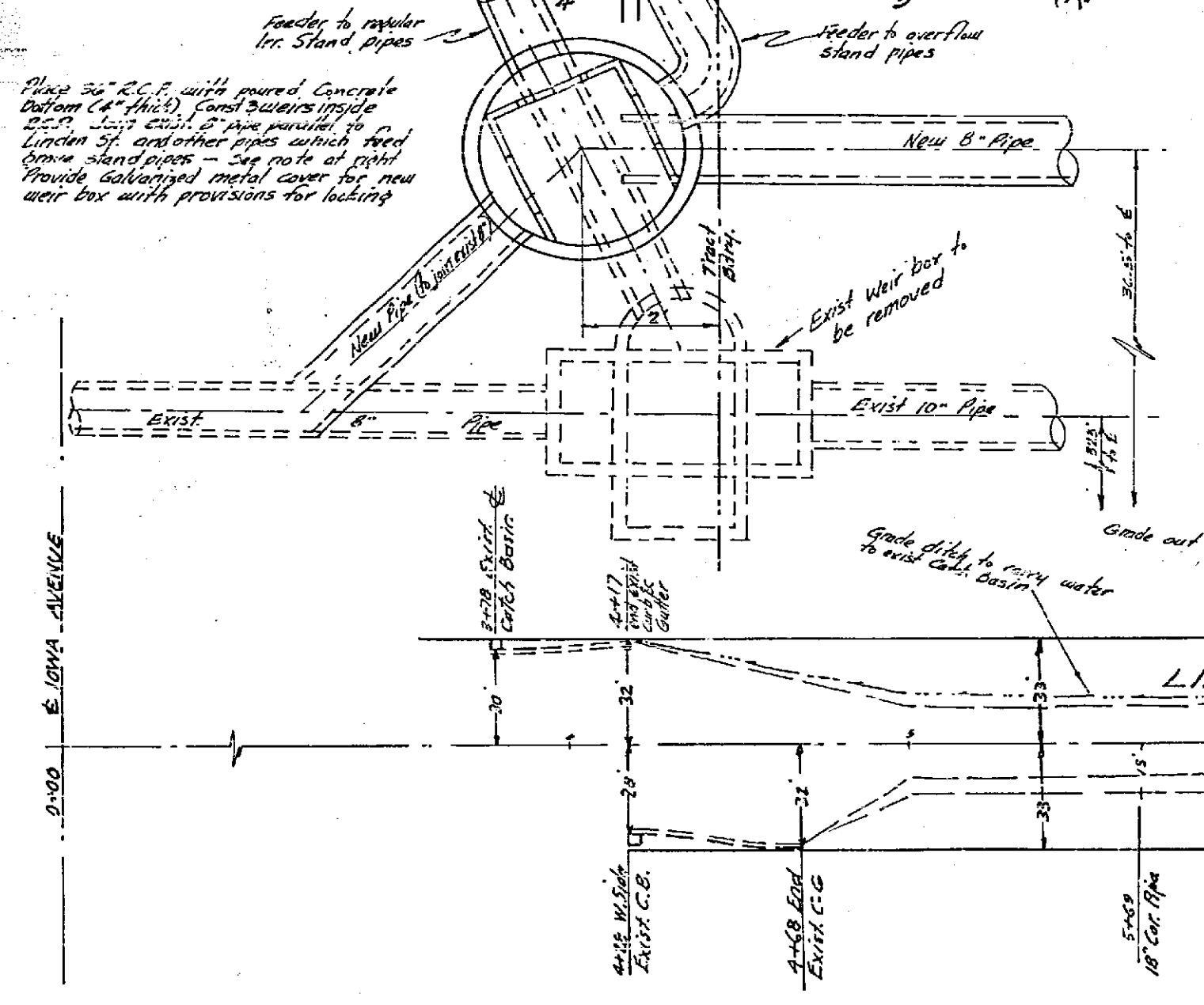
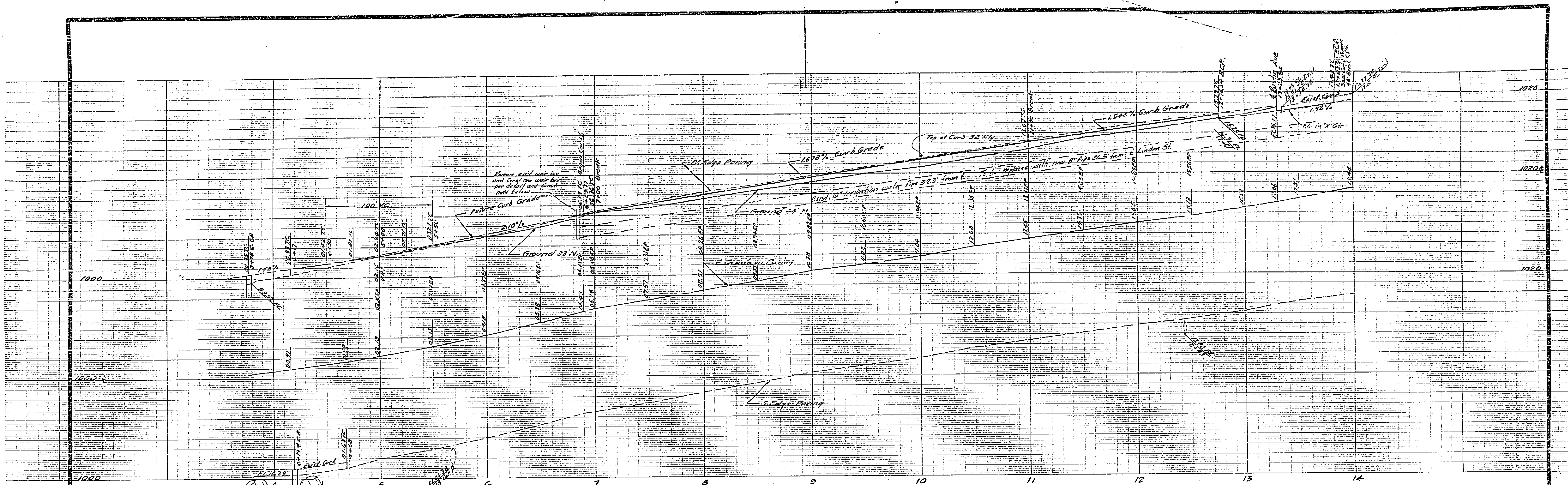


BENCH MARKS
 B.M. Nail in top of water box N.W. side Main St
 270' Ely Tom Ave. Elev. 993.65'
 T.B.M. Chisold appears "G" N.W. corner top step of
 church on Rustin Ave. 250' N.W. Linden St.
 Elev. 1018.13'

REVISIONS		
MARK	DATE	DESCRIPTION
2		Added proposed plan of profile of sewer line to lots 9, 10, 11, 12, 13, 14, 27, 28, 29, 30, 31, 32, 33, 34, 35, 36, 37, 38, 39, 40, 41, 42, 43, 44, 45, 46, 47, 48, 49, 50, 51, 52, 53, 54, 55, 56, 57, 58, 59, 60, 61, 62, 63, 64, 65, 66, 67, 68, 69, 70, 71, 72, 73, 74, 75, 76, 77, 78, 79, 80, 81, 82, 83, 84, 85, 86, 87, 88, 89, 90, 91, 92, 93, 94, 95, 96, 97, 98, 99, 100.

J. F. DAVIDSON - CIVIL ENGINEER
 R.E. NO. 882
 RIVERSIDE, CALIFORNIA
 APPROVED BY *George E. M. Galt* DATE 1-28-63
CITY OF RIVERSIDE, CALIFORNIA
DEPARTMENT OF PUBLIC WORKS
 ALLEY PLAN & PROFILE
 LOTS F & G
 TRACT 2350
 HORIZ. SCALE 1"=40' VERT. SCALE 1"=4'
 DESIGNED BY
 DRAWN BY *add*
 CHECKED BY *wid*
 RECOMMENDED BY *R. J. Thiel*
 ASSISTANT CITY ENGINEER
 APPROVED BY *George E. M. Galt*
 DIRECTOR OF PUBLIC WORKS
 DATE 1-28-63
 NO. R-602
 SHEET 5 OF 5

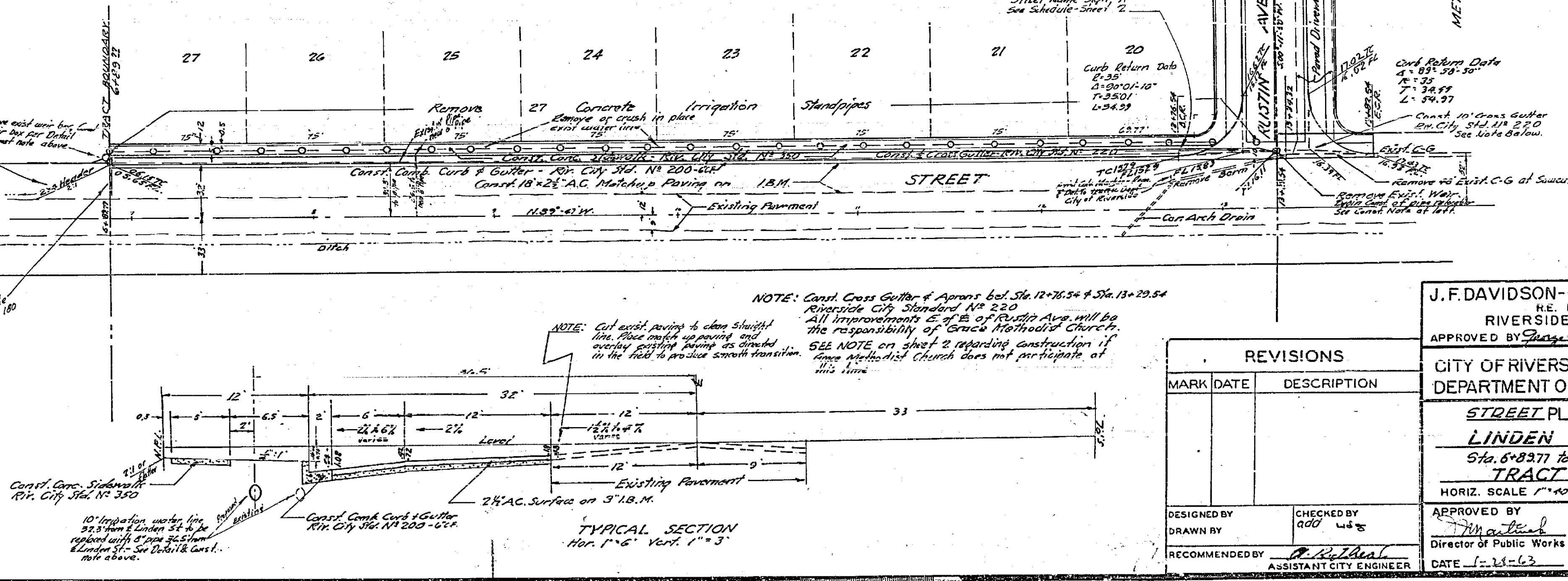




NOTE:
Construction of new manhole, joining of pipes and laying of new 8" pipe to be directed by Charles E. Fisher of East Riverside Water Co. 401 1/2 E. East Riverside Water Co. 48 hrs. (min) before const. begins. Phone No. Overland 3-6730

3. The City of Riverside will take a soil test to determine the Imported Base Material (I.B.M.) thickness after the rough grading of the streets and alleys has been completed. Prime coat and paint under required.

A. BENCH MARKS -
B.M. Nail in top of Weir box W. side Blinn St. 4190-214 Tom's Arc. Elev. = 933.45
T.M. Chiseled Square in N.W. cor. Top Step of Church on Rustin Ave. Elev. = 1018.13



NOTE: Const. Cross Gutter & Aprons bet. Sta. 12+76.54 & Sta. 13+29.54 Riverside City Standard No. 220
All improvements S. of E. of Rustin Ave. will be the responsibility of Grace Methodist Church. SEE NOTE on sheet 2 regarding construction if since Methodist Church does not participate at this time.

REVISIONS	
MARK	DESCRIPTION

J.F. DAVIDSON - CIVIL ENGINEER
R.E. No. 862
RIVERSIDE, CALIFORNIA
APPROVED BY *Gregory M. Cant* DATE 5/29/63
R.E. 10688

CITY OF RIVERSIDE, CALIFORNIA
DEPARTMENT OF PUBLIC WORKS

STREET PLAN & PROFILE
LINDEN STREET
Sta. 6+82.71 to Sta. 13+82.54
TRACT 2350
HORIZ. SCALE 1" = 40' VERT. SCALE 1" = 4'

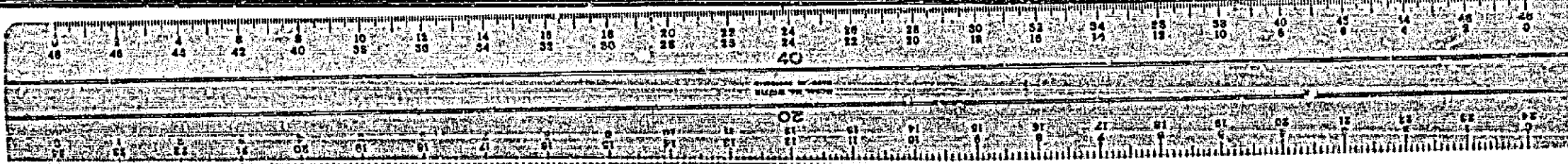
DESIGNED BY
DRAWN BY
RECOMMENDED BY *A. Mitchell*
ASSISTANT CITY ENGINEER

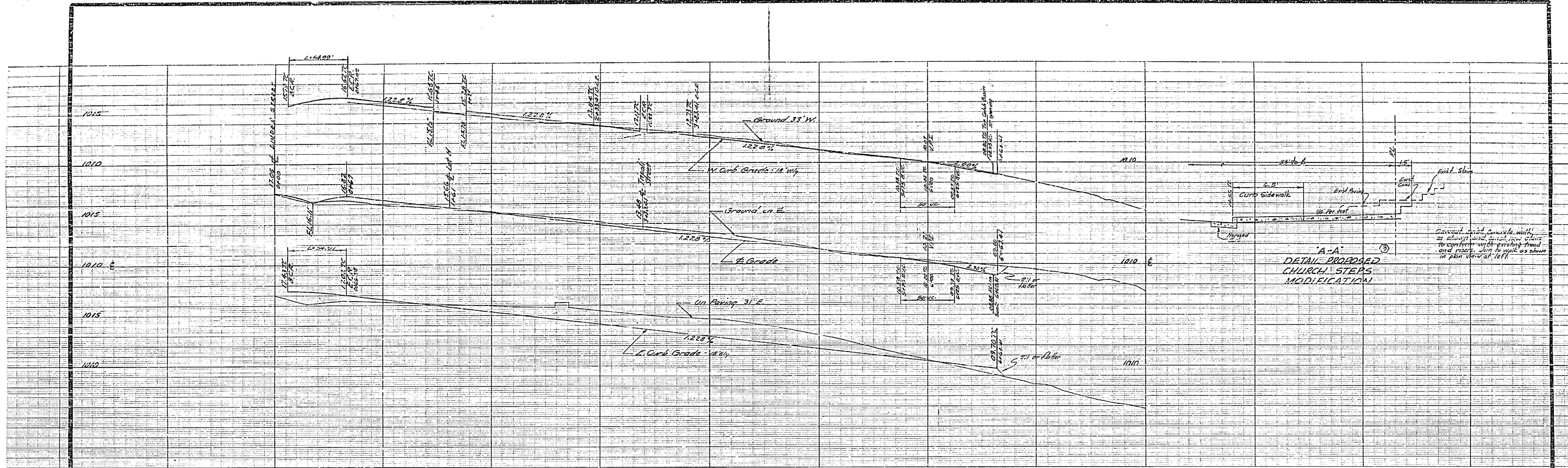
CHECKED BY *W. G. ...*
DIRECTOR OF PUBLIC WORKS

DATE 5-29-63

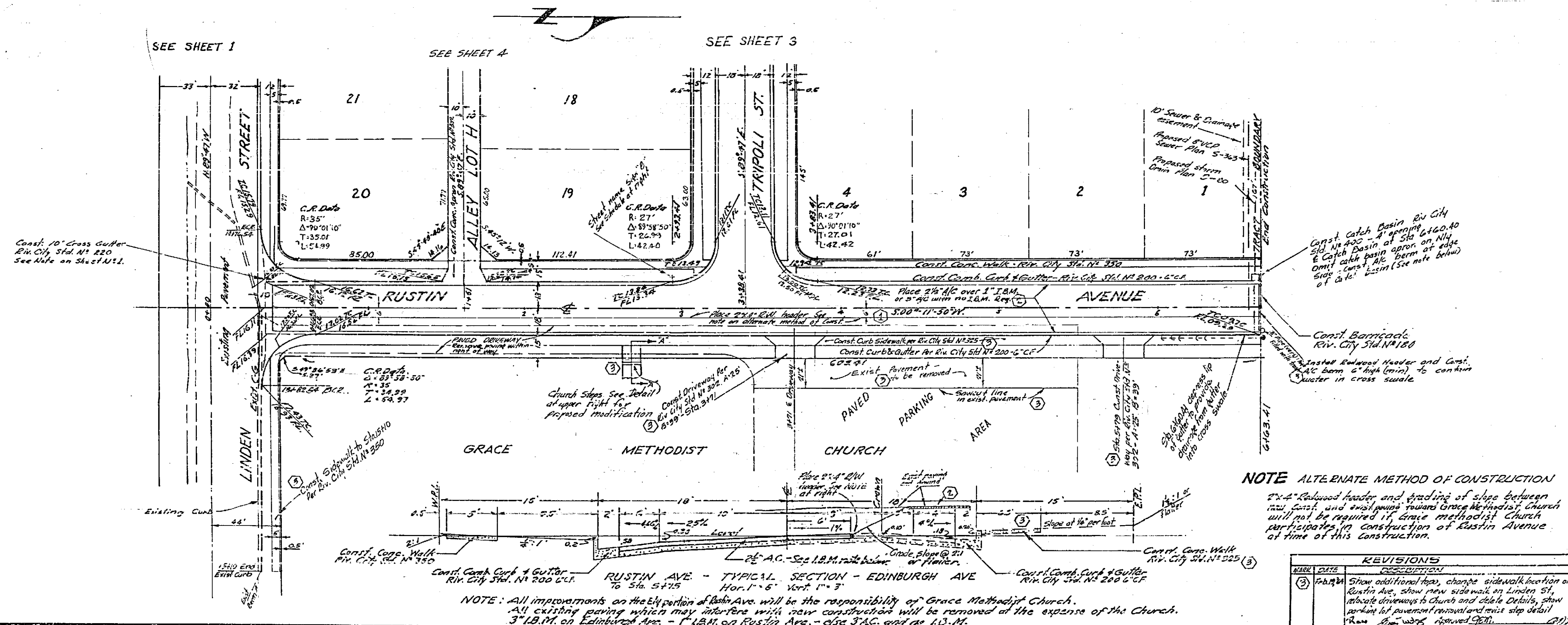
APPROVED BY *W. G. ...*
DIRECTOR OF PUBLIC WORKS

NO. R-602
SHEET 1 OF 5





BENCH MARKS
 B.M. Nail in top of Mail box N.Y. Side Edinburgh Street
 6+10 Ely. Iowa Ave. Elev. = 993.45'
 T.M.P. Chiseled square B N.W. Step of Church
 on Rustin Ave. 2+50 N.Y. Linden St. Elev. = 1013.13'



STREET NAME SIGN SCHEDULE

A	LINDEN STREET	1100
B	RUSTIN AVENUE	3400
C	TRIPOLI STREET	1100
	EDINBURGH AVENUE	3400

Street Name Signs, Posts to be furnished and installed by the subdivider per City of Riverside Sign Ord.

REVISIONS

MARK	DATE	DESCRIPTION
1	10-5-53	Show Railroad Header 6" x 4" of Edinburgh Ave in Plan View. Approved by J.F. Davidson.
2	11-10-53	Show base requirements and exact dimensions in cross section. Approved by J.F. Davidson.

J.F. DAVIDSON - CIVIL ENGINEER
 R.E. No. 862
 RIVERSIDE, CALIFORNIA
 APPROVED BY *George E. M. Cuts* DATE 5/21/54
 R.E. 10248
 CITY OF RIVERSIDE, CALIFORNIA
 DEPARTMENT OF PUBLIC WORKS
 STREET PLAN & PROFILE
 RUSTIN AVENUE
 TRACT 2350
 HORIZ. SCALE 1" = 40' VERT. SCALE 1" = 4'
 DESIGNED BY [Signature]
 DRAWN BY [Signature]
 RECOMMENDED BY [Signature] ASSISTANT CITY ENGINEER
 APPROVED BY [Signature] Director of Public Works
 DATE 5/21/54
 NO. R-602
 SHEET 2 OF 5

