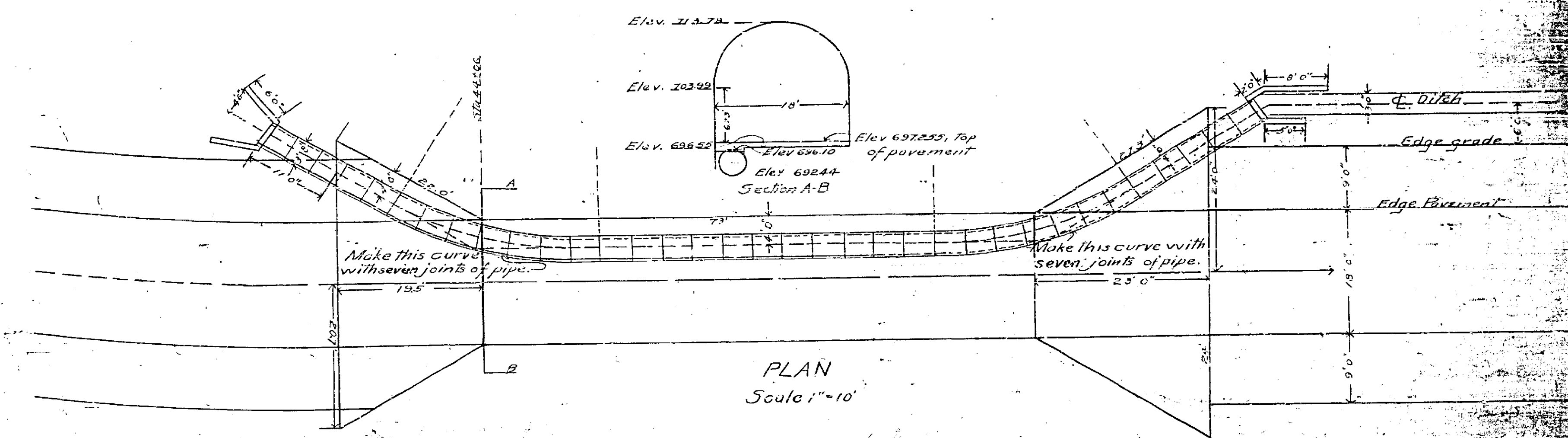
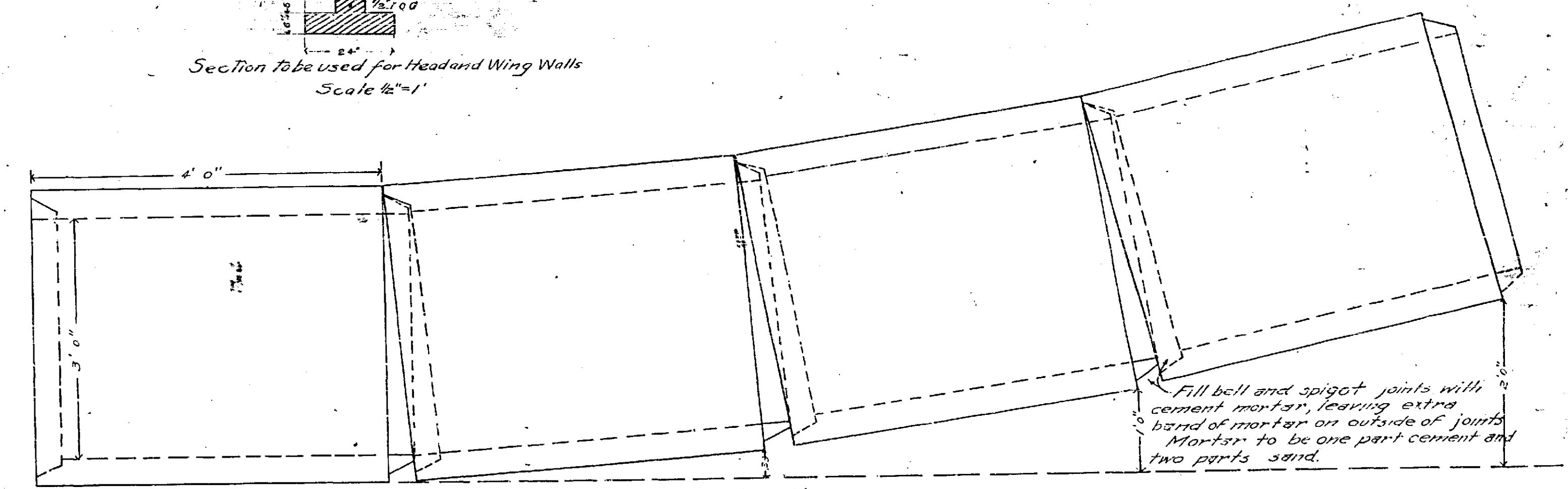
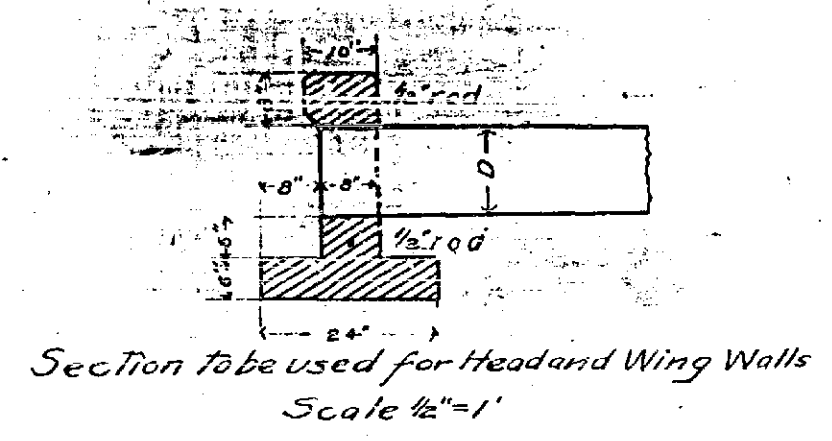


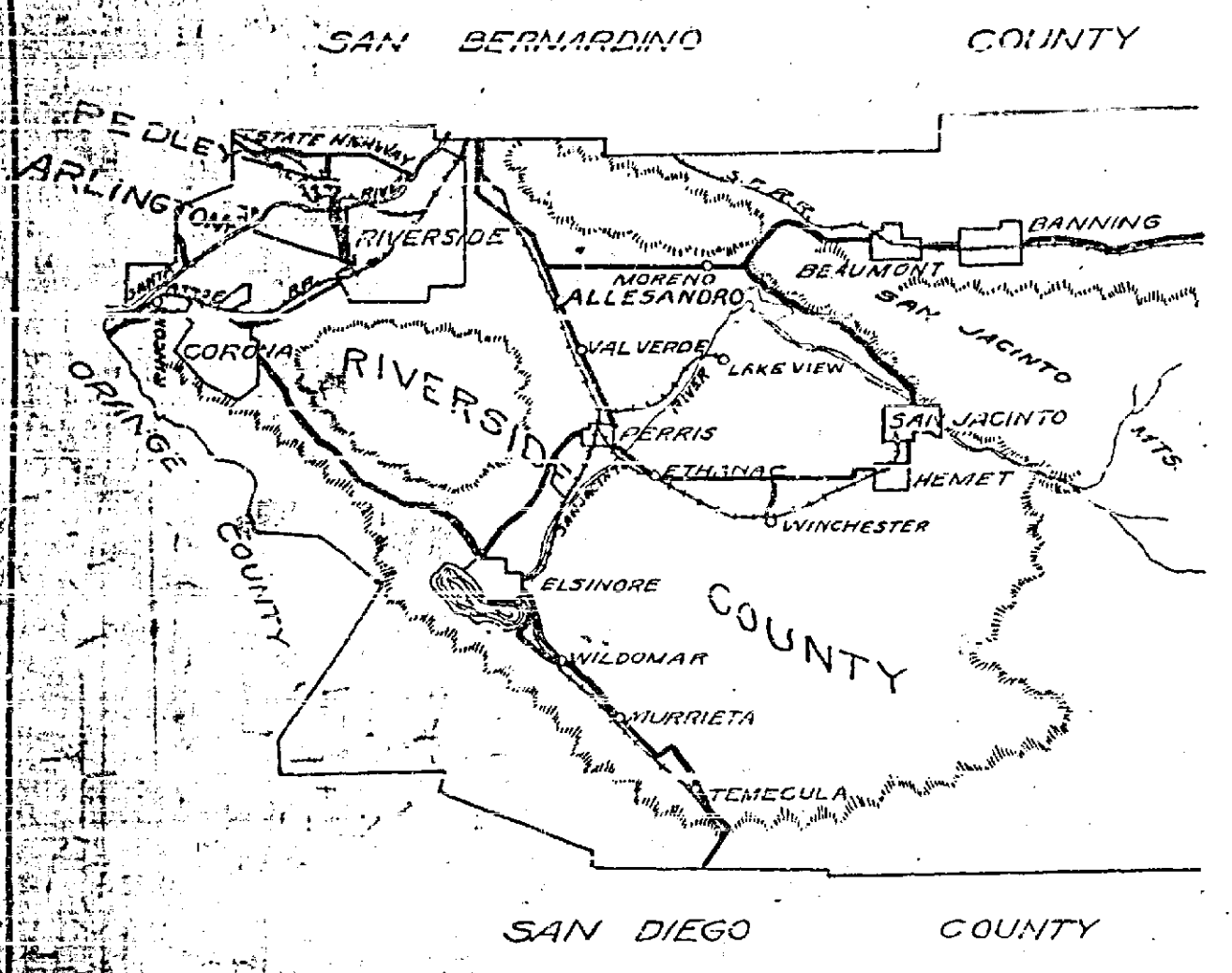
PLAT
 SHOWING
 Proposed Layout
 36" Culvert under Subway
 Arlington-Pudley Road
 April 1928
 A.C. Fulmer County Surveyor



PLAN
 Scale 1"=10'



Fill bell and spigot joints with cement mortar, leaving extra band of mortar on outside of joints. Mortar to be one part cement and two parts sand.



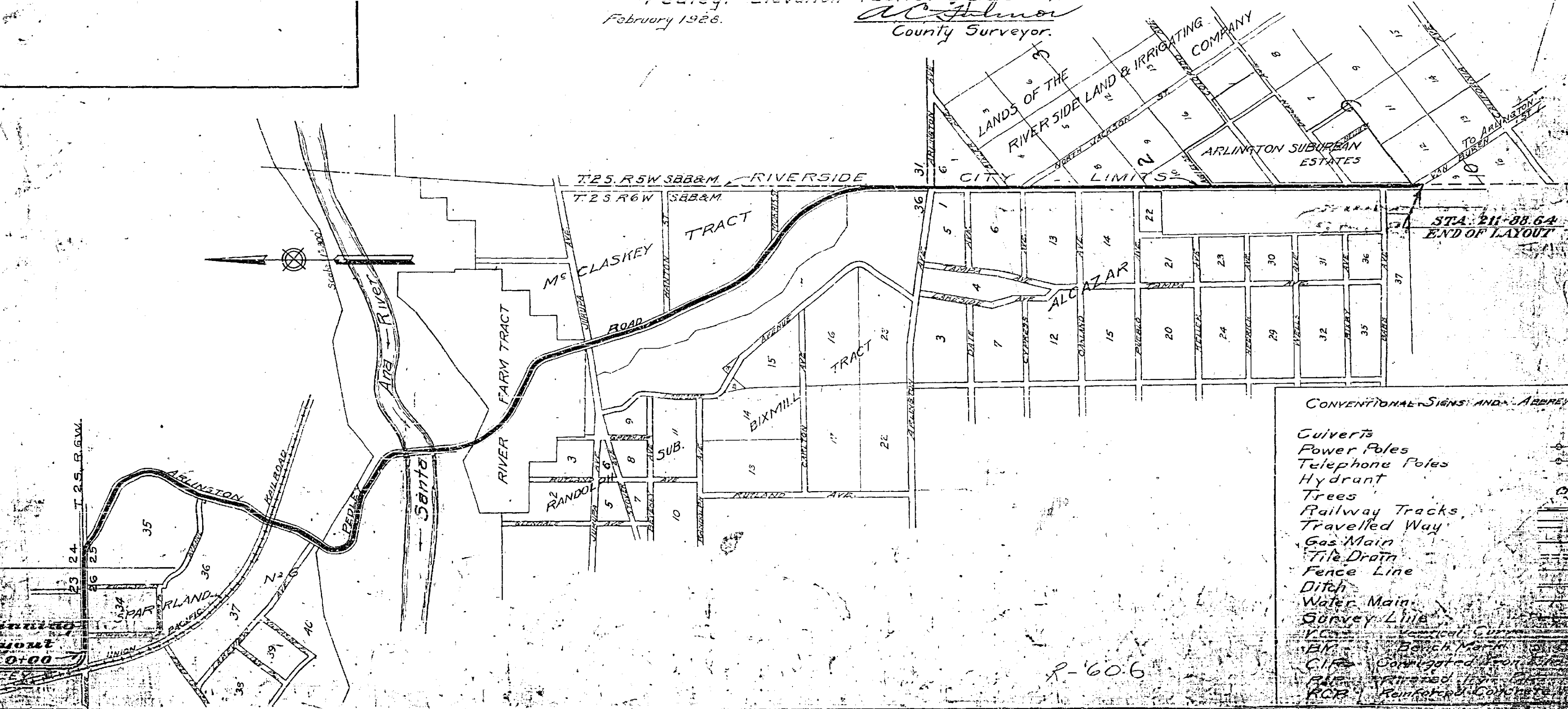
RIVERSIDE COUNTY
PLAN AND PROFILE
 SHOWING
 THE PROPOSED IMPROVEMENT
 OF THE

ARLINGTON-PEDLEY ROAD

Elevations are based on Garnet Street
 Bench Mark No. 12. + in concrete north
 east corner, west bound signal at
 Pedley. Elevation 723.40. U.S.G.S. Datum.
 February 1928.
W. H. Johnson
 County Surveyor.

Approximate Quantities

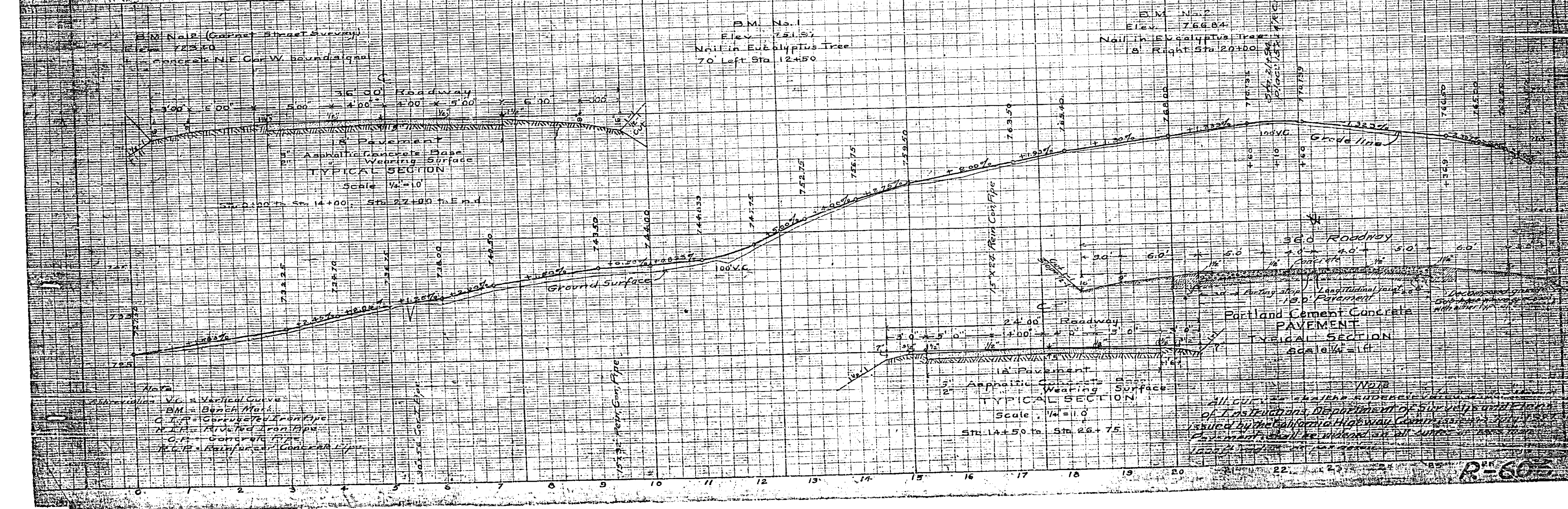
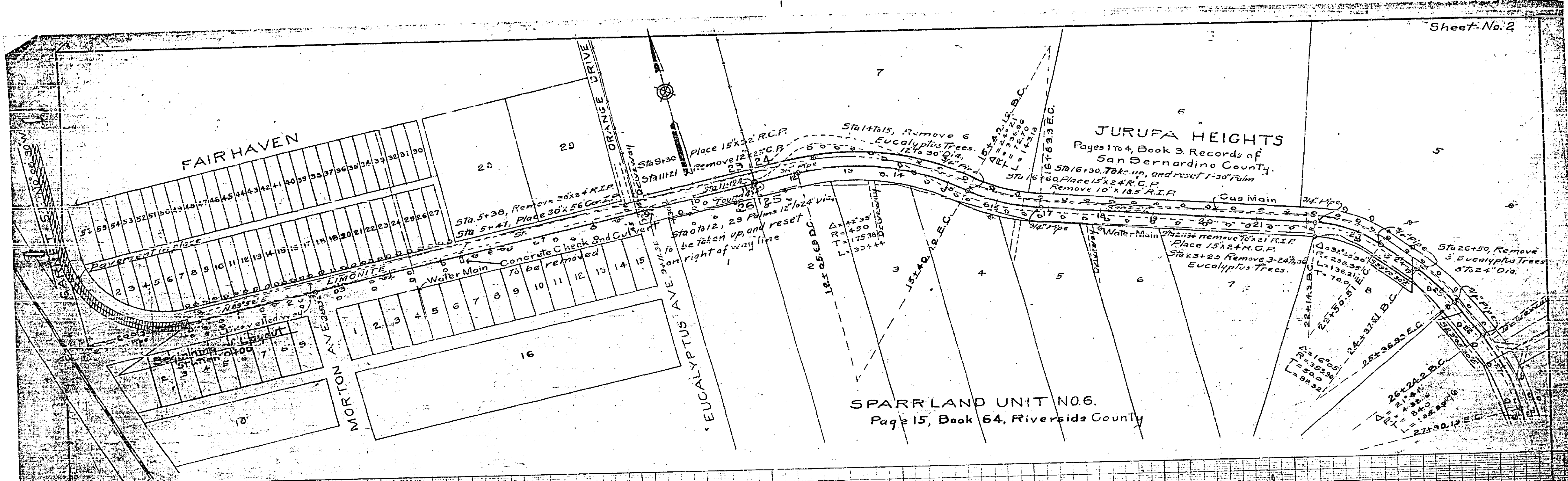
1. 20,753 lineal feet of shaping roadway.
2. 23,916 cubic yards of excavation.
3. 366,354 sq. ft. of 5 inch Asphaltic Concrete Pavement,
or 6 in. Portland Cement Concrete Pavement.
4. 1250 lbs. of Reinforcing Steel in Culverts.
5. 128 lineal feet 12" reinforced concrete pipe.
6. 128 " " 15" " " "
7. 146 " " 36" " " "
8. 40 " " 18" Corrugated iron pipe.
9. 60 " " 30" " " "
10. 64 " " 36" " " "
11. 16 " " 16" vitrified pipe.
12. 220 " " 6" Drain Pipe.
13. 215 Cubic Yards Concrete - Concrete Dips.
14. 5.4 Cu. Yds. Portland Cement Concrete in Headwalls.
15. 32.3 Cu. Yds. Portland Cement Concrete Culverts.
16. 1281 Lin. Ft. Taking up and relaying 12" drain tile.
17. 1200 Cu. yds. cu. yds. of decomposed granite sub-base.

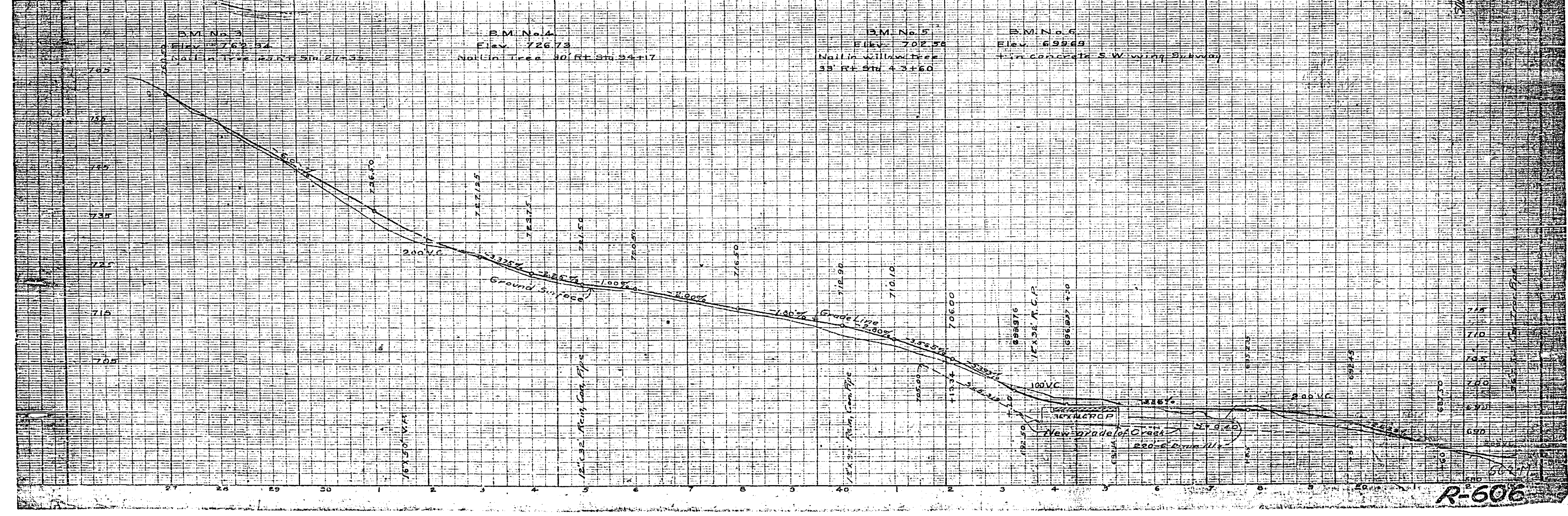
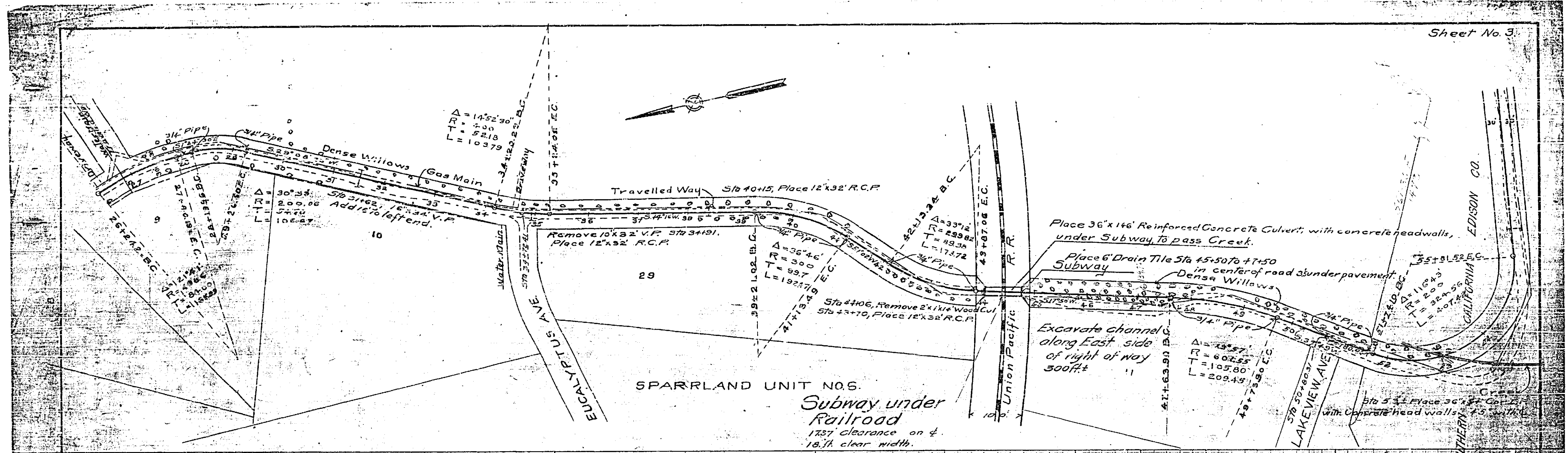


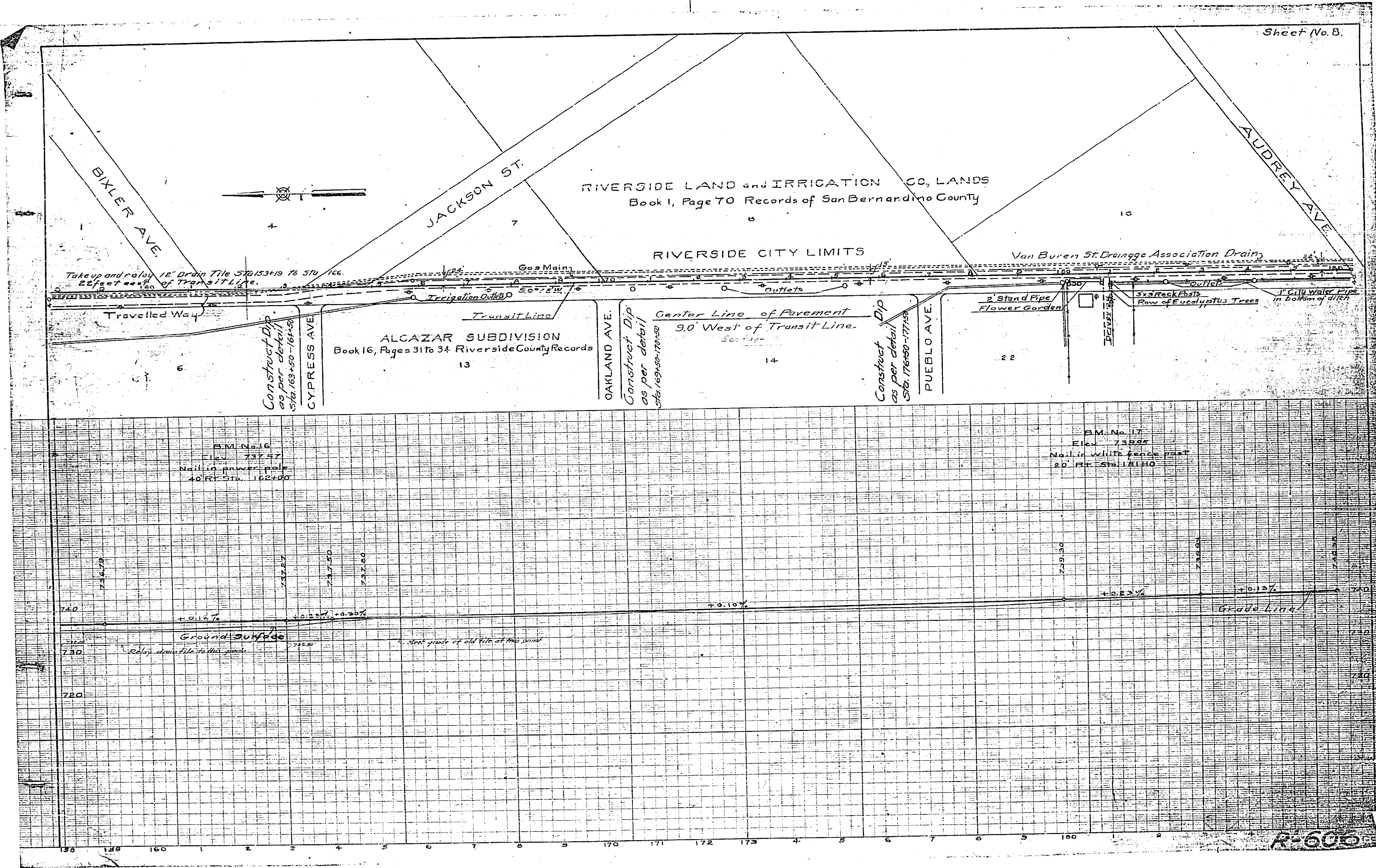
CONVENTIONAL SIGNS AND ABBREVIATIONS

- Culverts
- Power Poles
- Telephone Poles
- Hydrant
- Trees
- Railway Tracks
- Travelled Way
- Gas Main
- Tile Drain
- Fence Line
- Ditch
- Water Main
- Survey Line
- ...

P-606







R-605

