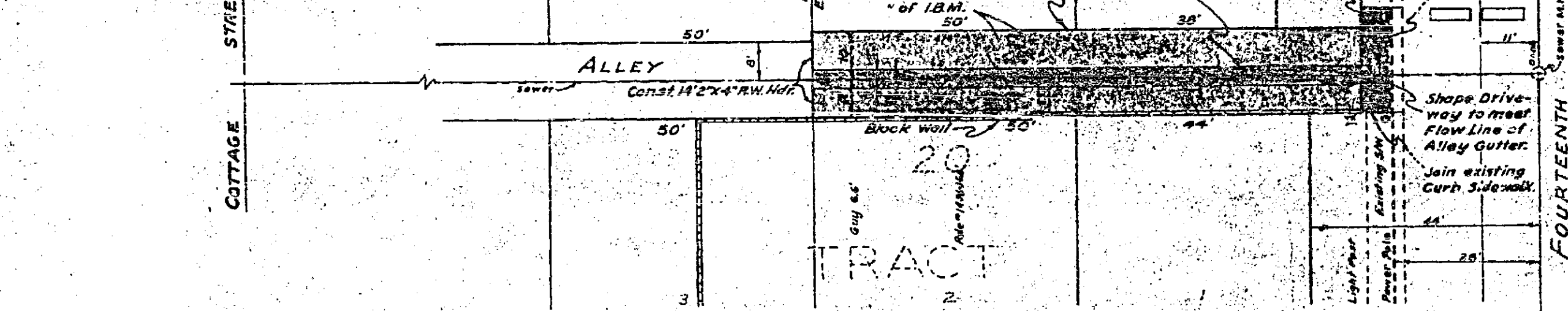
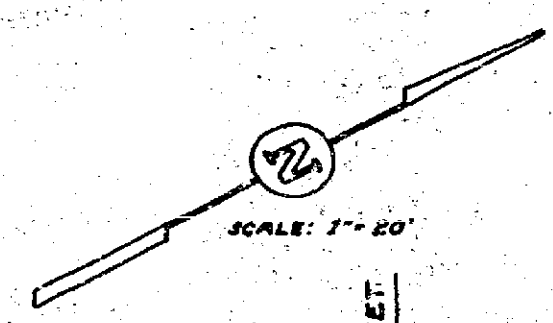
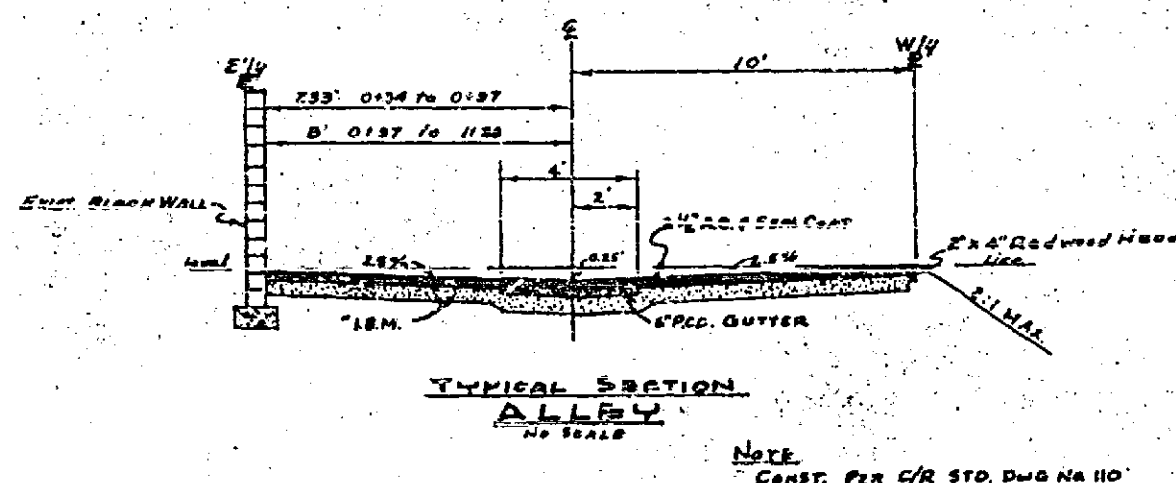


PROFILE	SHEET NO.	TOTAL SHEETS



- GENERAL NOTES**
- It shall be the responsibility of the Contractor to clear the right of way in accordance with the provisions of law as it affects such utility including irrigation lines and appurtenances and at no cost to City.
  - Construction shall be in accordance with the City of Riverside Department of Public Works Specifications No. 461 and Standard Drawings.
  - The City of Riverside will take a soil test to determine the requirements on base material after the alley has been prepared to rough grade.
  - Prime coat & Paint binder req'd.

PLAN	SHEET NO.	TOTAL SHEETS



**QUANTITY ESTIMATE**

4 CONCRETE GUTTER	104 LF
2 1/2" A.C. & SEAL COAT	1414 SF
IMPORTED BASE MATERIAL	1177 CU YD
2" x 4" REDWOOD HEADER	117 LF

ALBERT A. WEED ASSOCIATES  
 CIVIL ENGINEERS  
 RIVERSIDE, CALIFORNIA  
 APPROVED: [Signature] DATE: 6/17/62

REVISION		CITY OF RIVERSIDE, CALIFORNIA DEPARTMENT OF PUBLIC WORKS
MARK	DATE	
		ALLEY From 1414 St. to College St. Between Grove Ave. & Forest St.
DATE	June 1962	SCALE 1" = 20'
DRAWN	D.S.L.	W.D. 60-172
CHECKED		
APPROVED BY	[Signature]	NO. R-613
DATE	6-17-62	SHEET 1 OF 1

